

# Preliminary Sediment Augmentation Designs

---

Ed Weschler



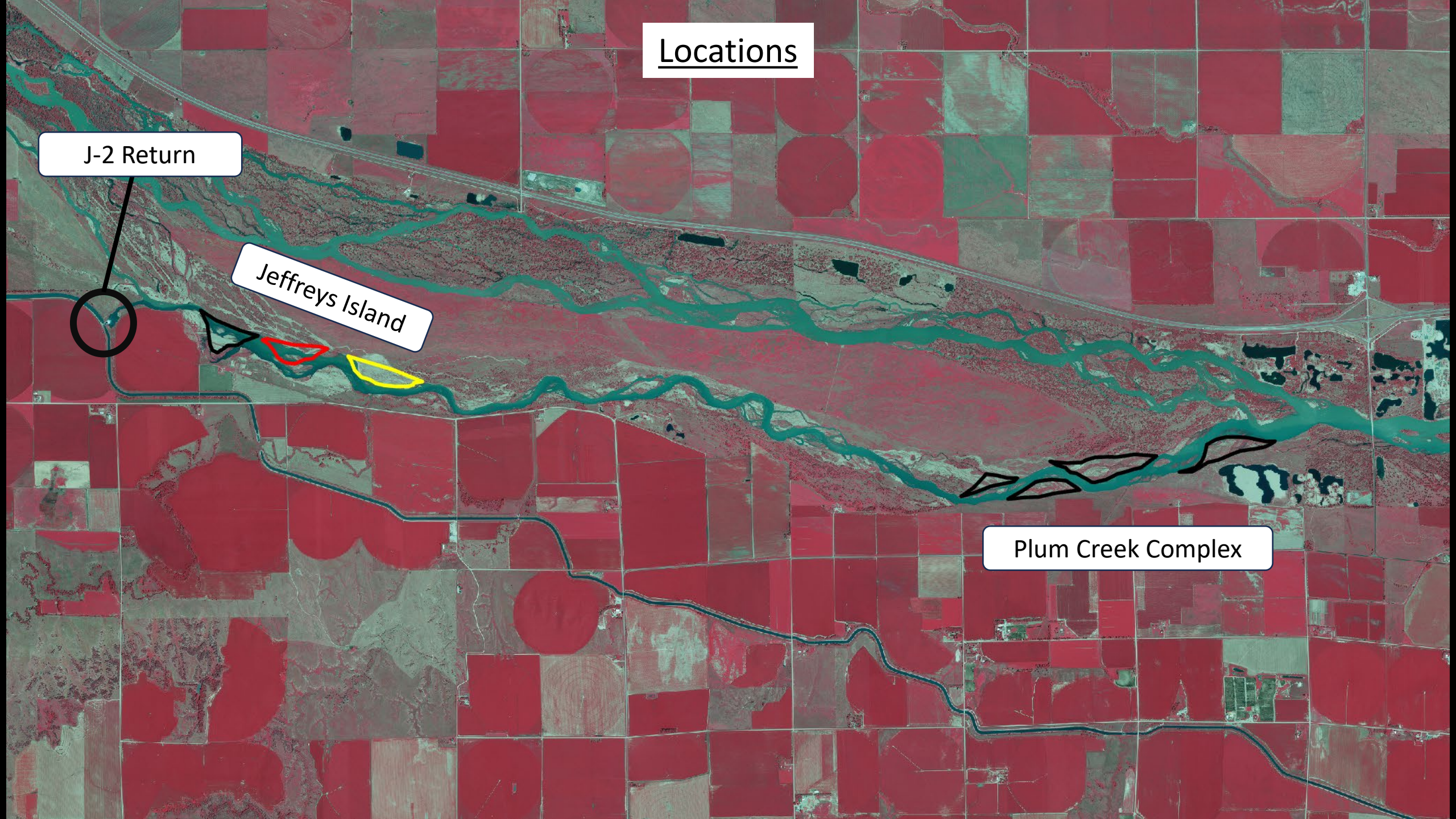


# Locations

J-2 Return

Jeffreys Island

Plum Creek Complex





Past Projects

- 40,000-53,000 CY
- 2017-2022
- CNPPID Sites 1 & 2

Jeffreys Island



J-2 Return

1

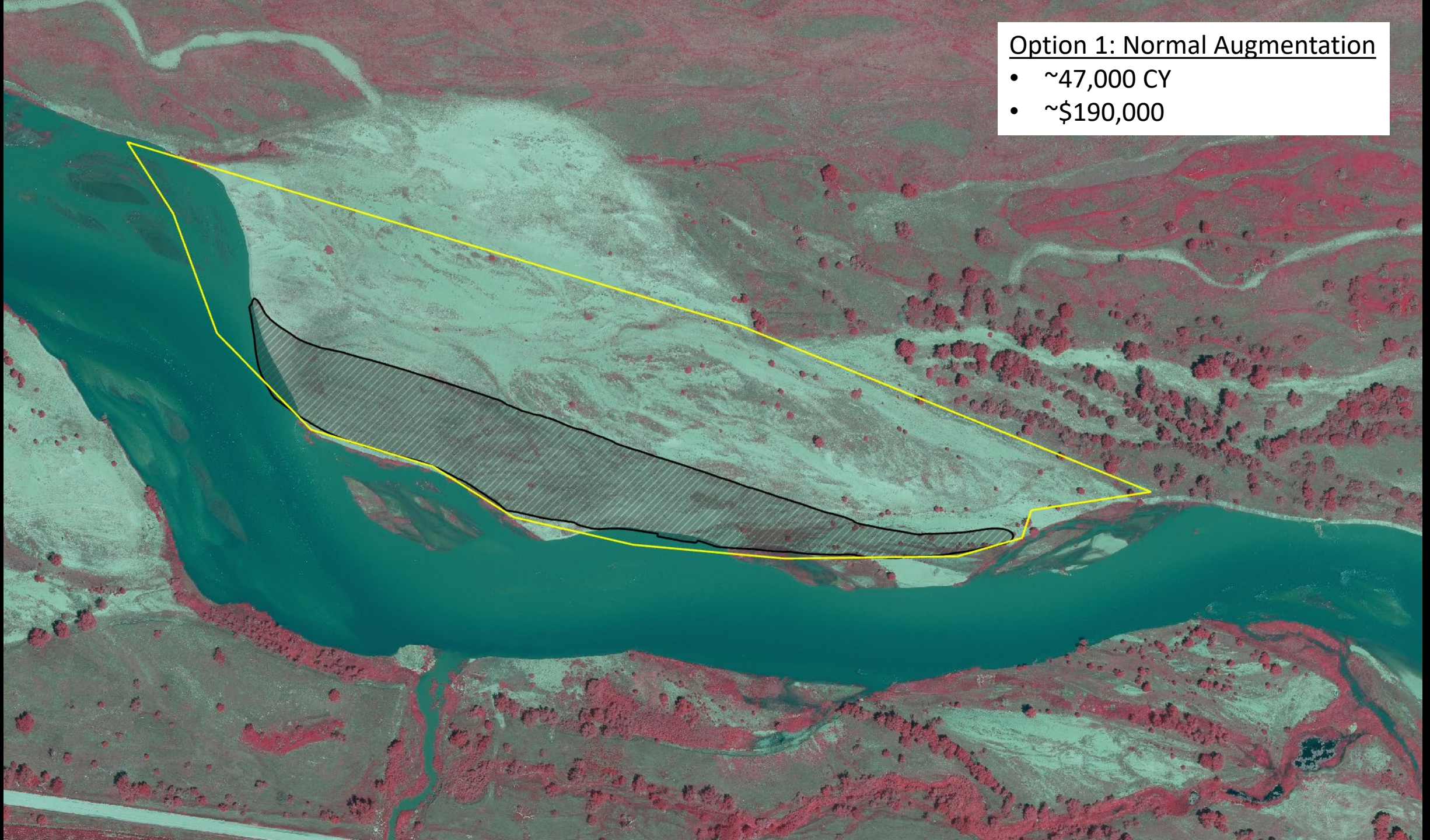
2

3



### Option 1: Normal Augmentation

- ~47,000 CY
- ~\$190,000









### Option 3: Move to Plum Creek Complex

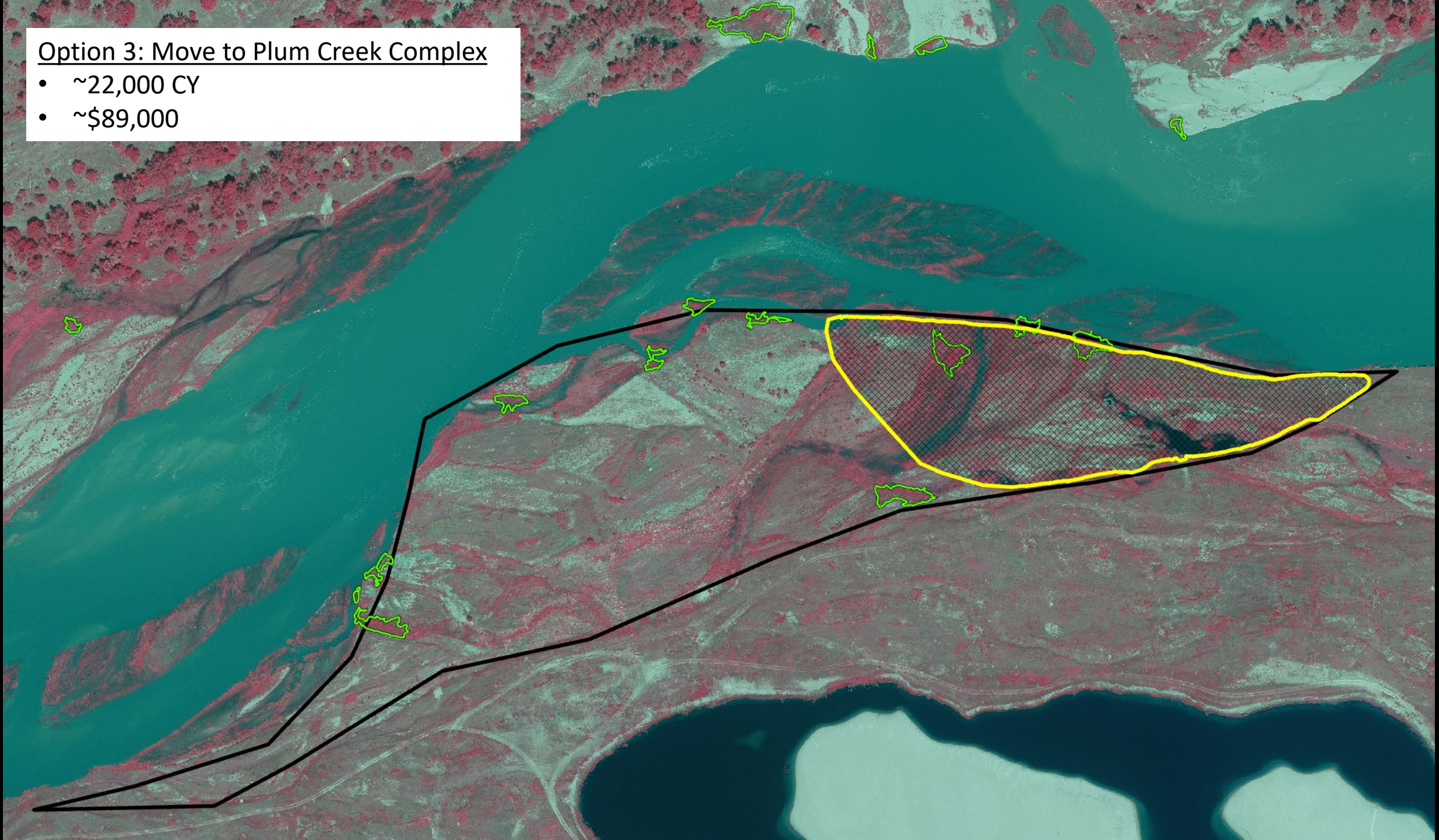
- 52 Phragmites Study Patches
- 4 permitted borrow sites





Option 3: Move to Plum Creek Complex

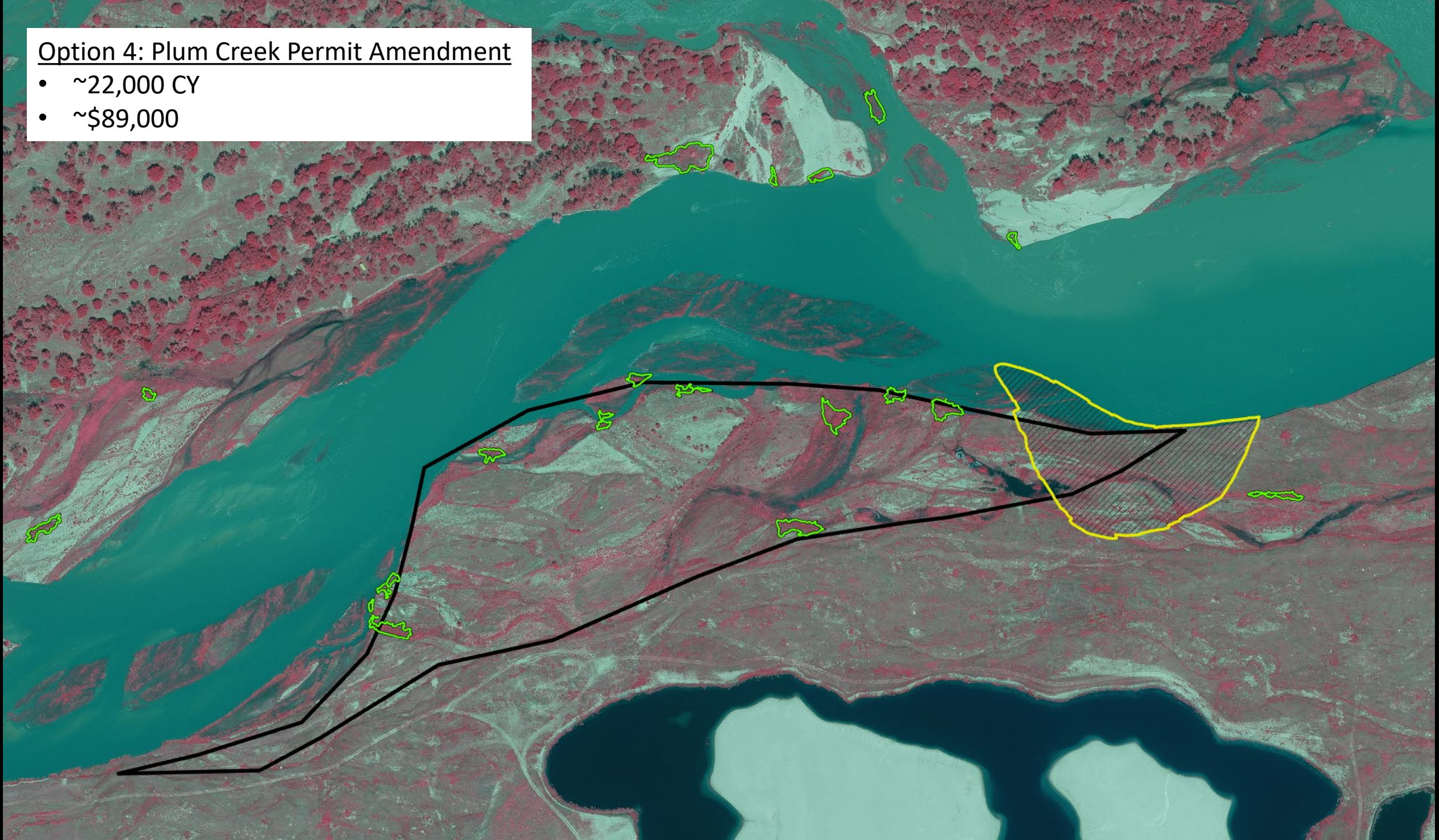
- ~22,000 CY
- ~\$89,000





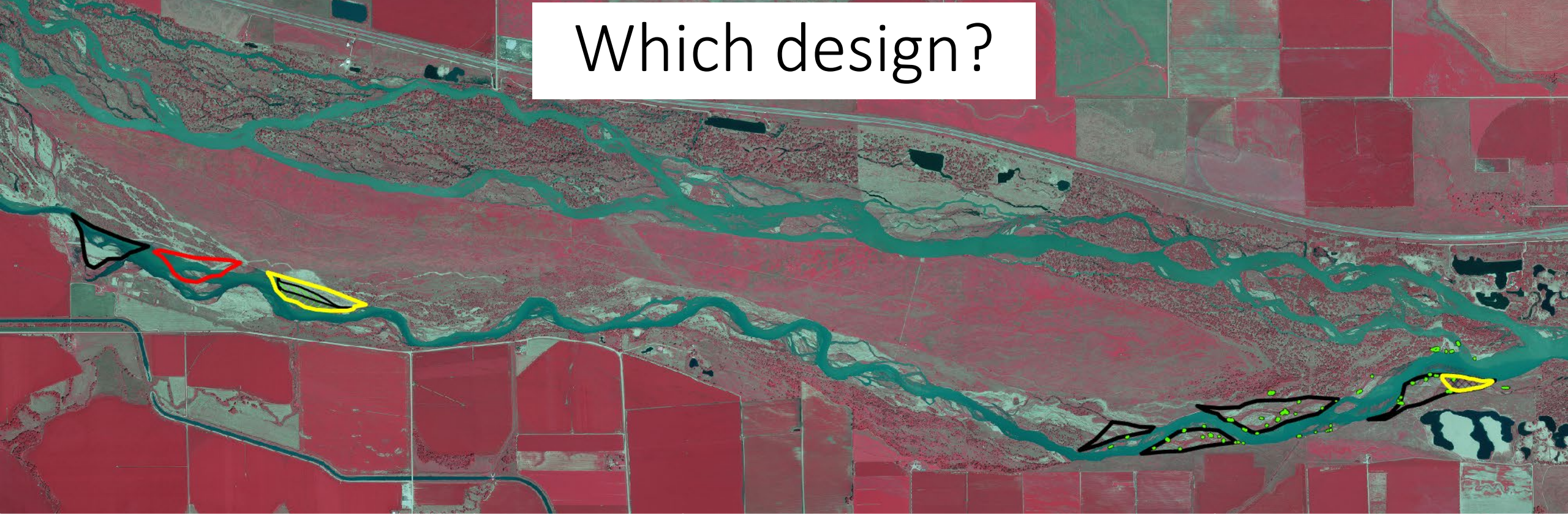
#### Option 4: Plum Creek Permit Amendment

- ~22,000 CY
- ~\$89,000





# Which design?



Design Option	Volume	Cost	Pros	Cons
Normal Augmentation – Jeffreys	~47,000 CY	\$190,000	Continuity	No incision rate learning with topobathy No contrast
Doubled Augmentation – Jeffreys	~96,000 CY	\$388,000	Continuity, Contrast	No incision rate learning with topobathy, \$\$\$
Lower Augmentation – Plum Creek Complex	~22,000 CY	\$89,000	Learn more about incision in J-2 reach via topobathy Lower cost	Impacts phragmites study