

## **North Platte River Water Supply Update EAC/RCC Meeting October 26, 2021**

Figure 1 shows current reservoir storage conditions for Reclamation reservoirs on the North Platte River as of October 1, 2021, and provides a comparison of total inflow, total Guernsey Reservoir outflow, and total September 30 system storage for water years 2017 through 2021, including the statistical “most probable” 2022 operations compiled from the October 2022 operating plan. The term “kaf” used in this report represents 1000 acre-feet. All averages used in this report are for the period 1991-2020.

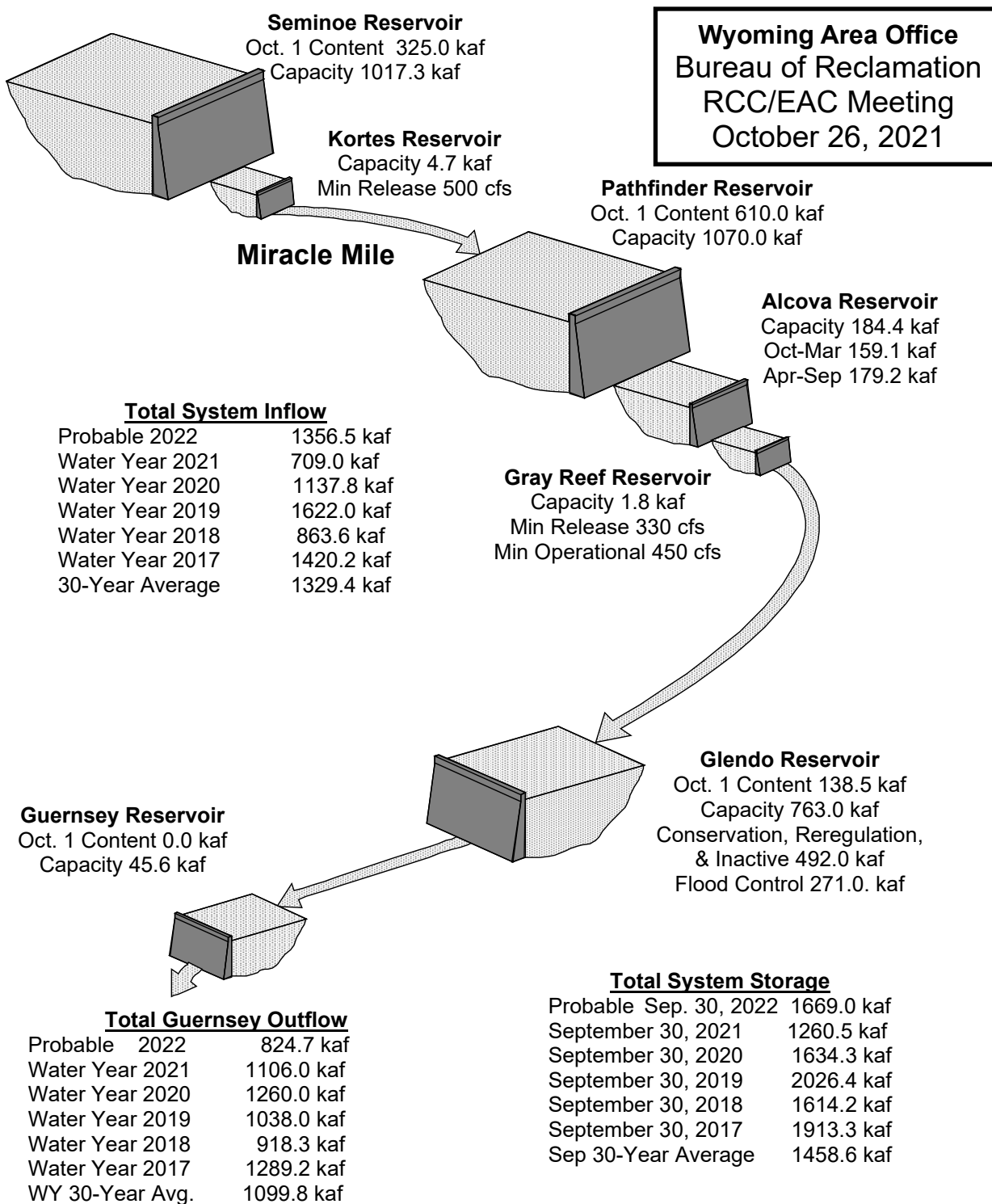
The North Platte total system storage of 1260.7 kaf on October 1, 2021 (first day of water year 2022) represents a decrease in the system storage of 371.2 kaf from the beginning of water year 2021 (1631.9 kaf). This system storage decrease is attributable to lower-than-average inflows during water year 2021 accompanied by a hot and dry summer requiring nearly average demands. Releases from Guernsey Reservoir were discontinued on September 6, 2021 after completing Pathfinder environmental account and CNPPID deliveries, and lowering Guernsey Reservoir for the ongoing intake gate project. The North Platte Project Irrigation Districts conserved approximately 141.1 kaf of carryover irrigation storage.

The operating plans for water year 2022 (October 2021 through September 2022) estimate total system probable inflow of 1356.5 kaf, which is an average inflow condition. The total Guernsey Reservoir probable outflow for water year 2022 is estimated to be 824.7 kaf, which reflects an assumed reduced irrigation delivery for the North Platte Project contractors. The total system storage on September 30, 2021, is 86% of average (1260.5 kaf/1458.6 kaf) or 45% of the total conservation capacity of the system.

Table 1 shows the projected October through September operations based on reasonable minimum, most probable, and reasonable maximum inflow conditions. These statistical inflow conditions provide the range for Reclamation operating plans in the North Platte River Basin. The operating plans are updated monthly to reflect changing inflow conditions. This report focuses on the information associated with the October most probable operating plan.

Table 1 also includes the accompanying information for water year 2021 and the 30-year average (1991-2020) for comparison. Based on the October most probable North Platte River Operating Plan, the North Platte Pathfinder ownership is estimated to reach a maximum ownership content of 939.2 kaf (87% of full) by the end of June. This would indicate that the Pathfinder Irrigation, Wyoming, and Environmental accounts would not fill. Given the most probable inflow conditions, Guernsey, Inland Lakes, and Glendo ownerships are not expected to fill. Since the Pathfinder ownership is not expected to fill, the Kendrick Ownership is not expected to accrue any storage in water year 2022. Releases from Guernsey Reservoir are in response to demands or when necessary for flood mitigation. Releases from Guernsey Reservoir are scheduled as demands only under the most probable operating plan.

Reclamation will continue to update the North Platte River operating plans on a monthly basis in response to changing inflow conditions. Reclamation will prepare forecasts of the April through July snowmelt runoff continuing through May 1. The above projected operations are subject to change in response to fluctuating inflow conditions. For additional information regarding current reservoir contents and releases, please visit our website ([https://www.usbr.gov/gp/lakes\\_reservoirs/index.html](https://www.usbr.gov/gp/lakes_reservoirs/index.html) and <https://www.usbr.gov/gp/hydromet/>).



**Figure 1. North Platte River System, Seminoe Reservoir to Guernsey Reservoir**  
Total System Conservation Capacity 2,815.9 kaf

Table 1. North Platte River System Operating Plan – October Update for Water Year 2022

Projected Total System Inflow for Water Year 2022:													1000 x acre-feet
	Oct	Nov	Dec	Jan	Feb	Mar	Apr	May	Jun	Jul	Aug	Sep	Total
Reasonable Minimum	38.9	34.2	29.4	28.7	33.6	63.7	94.5	143.3	115.3	6.1	15.0	23.5	626.2
Most Probable	49.1	44.5	37.9	38.3	46.8	82.1	183.8	343.0	349.2	104.0	40.7	37.1	1356.5
Reasonable Maximum	61.7	55.8	40.8	49.4	52.6	96.0	258.3	670.3	722.5	255.3	80.6	64.6	2407.9
Water Year 2021	26.1	28.3	27.0	30.9	36.5	70.1	120.0	202.5	102.0	25.7	22.7	17.2	709.0
Average 1991-2020	44.9	45.0	39.4	43.9	47.0	87.8	162.8	340.9	343.4	105.0	35.6	34.0	1329.9
Most Probable % of Avg.	109%	99%	96%	87%	100%	94%	113%	101%	102%	99%	114%	109%	102%

Projected Guernsey Reservoir Outflow for Water Year 2022:													1000 x acre-feet
	Oct	Nov	Dec	Jan	Feb	Mar	Apr	May	Jun	Jul	Aug	Sep	Total
Reasonable Minimum	2.2	1.5	1.2	1.0	1.2	1.2	0.4	74.0	154.9	217.2	217.6	33.2	705.6
Most Probable	3.3	2.0	1.8	1.5	1.1	0.7	0.4	75.0	154.9	270.1	271.3	42.6	824.7
Reasonable Maximum	3.2	1.7	1.5	1.8	1.2	1.0	10.0	200.4	211.7	368.9	368.8	259.5	1429.7
Water Year 2021	0.2	0.1	0.1	0.1	0.1	0.2	23.1	143.5	152.9	264.1	266.3	38.6	889.4
Average 1991-2020	2.9	0.4	0.4	0.5	0.6	12.8	48.6	137.8	175.7	312.0	283.7	124.6	1099.8
Most Probable % of Avg.	115%	563%	439%	305%	199%	5%	1%	54%	88%	87%	96%	34%	75%

Projected Total System End-of-Month Storage* for Water Year 2022:													1000 x acre-feet
	Oct	Nov	Dec	Jan	Feb	Mar	Apr	May	Jun	Jul	Aug	Sep	
Reasonable Minimum	1287.3	1317.8	1343.9	1369.3	1399.5	1456.7	1539.3	1581.1	1507.1	1255.4	1018.8	988.5	
Most Probable	1298.3	1338.5	1372.5	1406.9	1450.3	1526.1	1697.3	1934.6	2089.3	1875.2	1604.0	1573.0	
Reasonable Maximum	1287.3	1317.8	1343.9	1369.3	1399.5	1456.7	1539.3	1581.1	1507.1	1255.4	1018.8	988.5	
Water Year 2021	1643.9	1670.7	1696.4	1722.0	1756.5	1822.7	1906.5	1944.3	1834.5	1574.4	1296.5	1260.5	
Average 1991-2020	1472.5	1514.4	1550.7	1590.5	1633.4	1700.3	1797.2	1969.6	2095.7	1846.6	1566.7	1458.6	
Most Probable % of Avg.	88%	88%	89%	88%	89%	90%	94%	98%	100%	102%	102%	108%	

\* includes Kortes Reservoir Content of 4.7 kaf and Gray Reef Reservoir Content of 1.5 kaf

# Actual data for Minimum, Most Probable, & Maximum Plans used in the October through January Columns

Table 2. North Platte River System September 2021 Inflows. All values in kaf.

Reservoir	September Inflow			September Historical Inflow			Accumulated Inflow (October - September)		
	W. Yr. 2021	30 Yr. Avg. <sup>5</sup>	% of Avg.	W. Yr. 2020	W. Yr. 2019	W. Yr. 2018	W. Yr. 2021	30 Yr. Avg. <sup>5</sup>	% of Avg.
Seminole	9.6	20.1	48	12.2	20.9	6.8	519.5	959.9	54
Pathfinder <sup>1,2</sup>	-1.4	3.4	N/A	0.2	-2.8	2.1	-22.9	111.2	N/A
Glendo <sup>3</sup>	5.5	6.7	82	7.9	8.8	4.9	185.4	221.0	84
Guernsey <sup>4</sup>	3.5	3.8	92	6.9	-0.2	4.8	27.0	37.3	72
<b>System Total</b>	<b>17.2</b>	<b>34.0</b>	<b>51</b>	<b>27.2</b>	<b>26.7</b>	<b>18.6</b>	<b>709.0</b>	<b>1329.4</b>	<b>53</b>

1 It is assumed that there is no gain between Seminole and Kortes Dams.

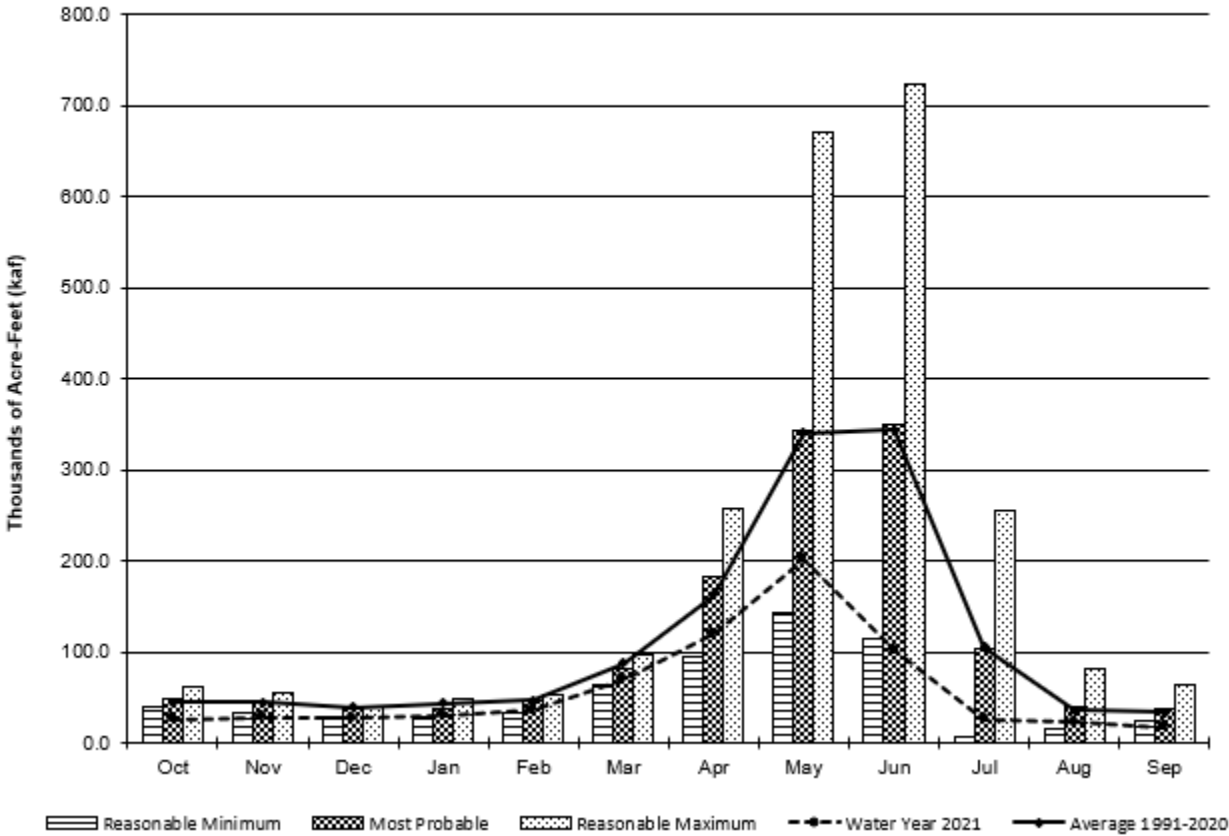
2 River gain between Kortes and Pathfinder Dams.

3 River gain between Pathfinder and Glendo Dams.

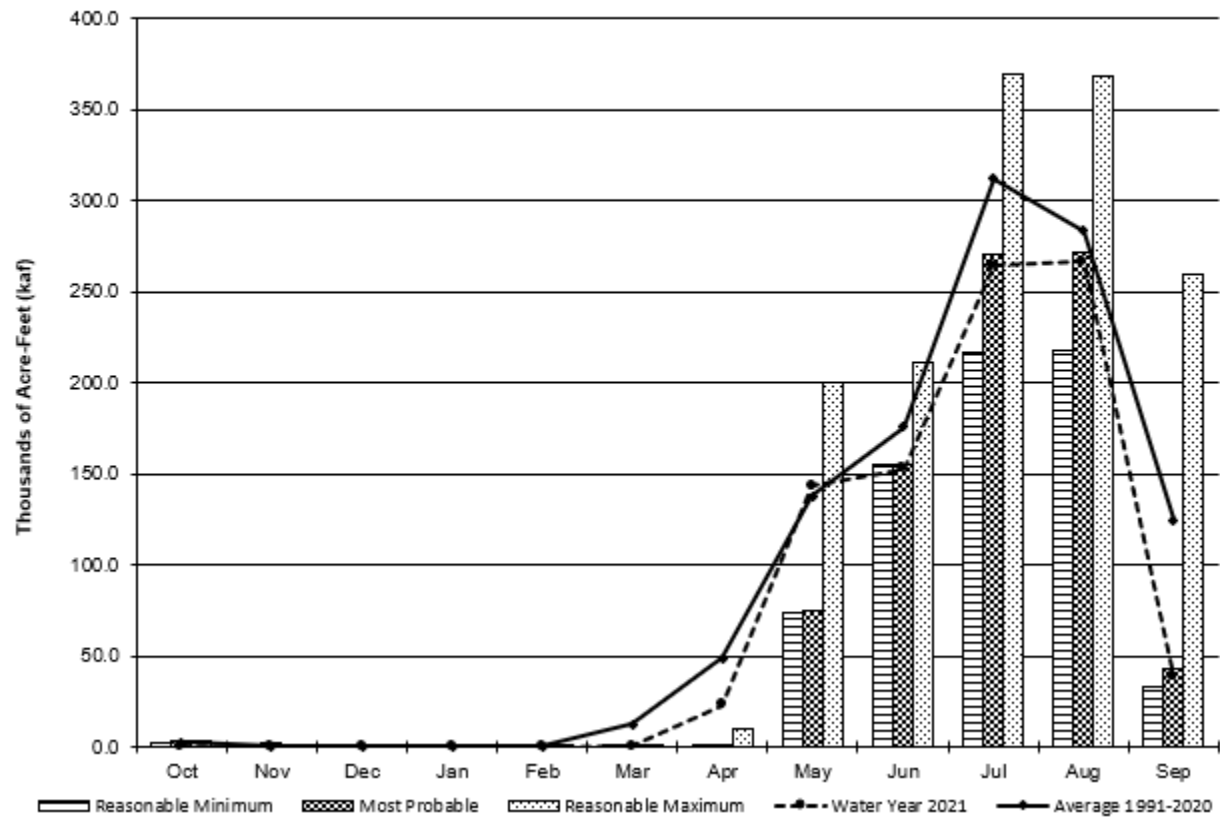
4 River gain between Glendo and Guernsey Dams.

5 30 year average. (1991-2020)

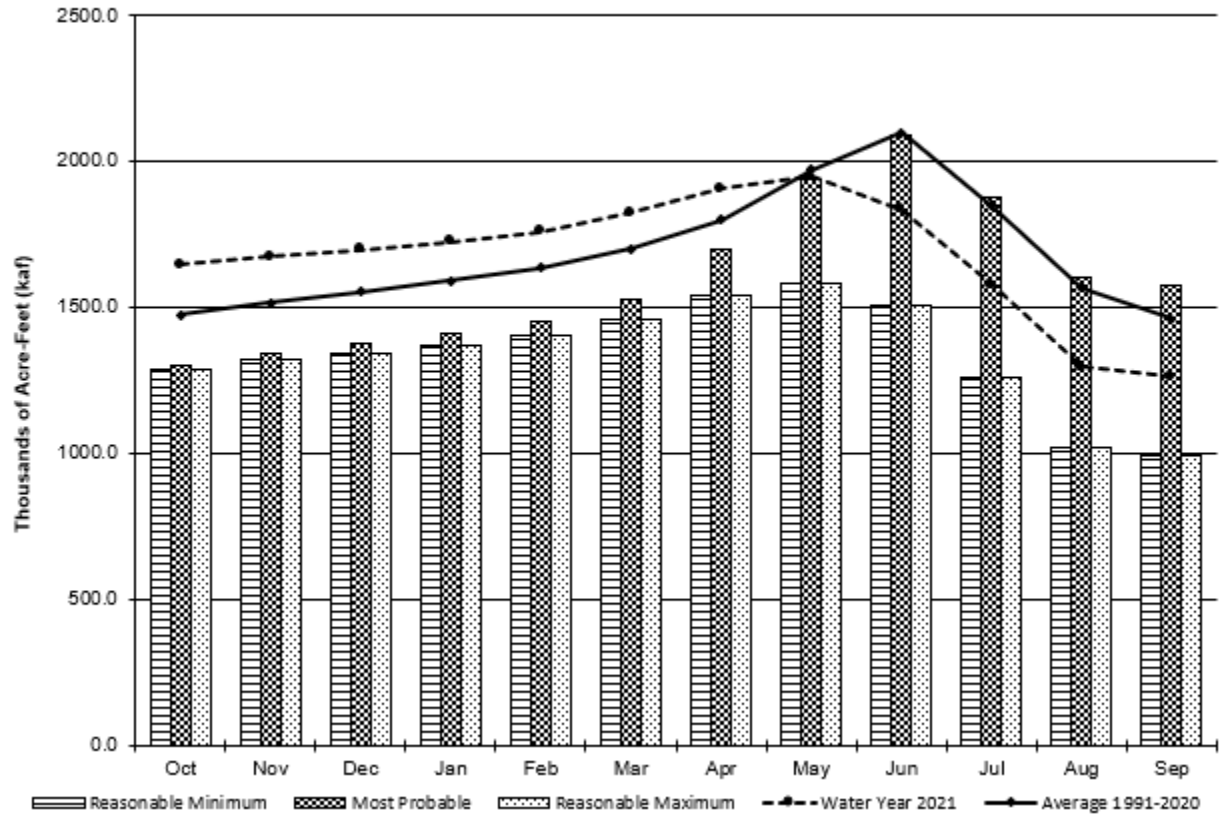
Graph 1. Projected Total System Inflow for Water Year 2022



Graph 2. Projected Total Guernsey Reservoir Outflow for Water Year 2022



**Graph 3. Projected Total System End-of-Month Storage for Water Year 2022**  
Total System Capacity 2,815.9 kaf



## Page 7 of 11

Page 1

## HYDROLOGY OPERATIONS

Seminoe Reservoir Operations			Initial Content				325.0 Kaf			Operating Limits: Max			1017.3 Kaf, 6357.00 Ft.			Total
-----			Oct	Nov	Dec	Jan	Feb	Mar	Apr	May	Min	Jun	Jul	Aug	Sep	
-----			-----	-----	-----	-----	-----	-----	-----	-----	-----	-----	-----	-----	-----	
Total Inflow	kaf	29.9	28.2	24.6	22.9	24.3	53.4	113.5	240.6	314.5	93.8	34.5	18.9	999.1		
Total Inflow	cfs	486.	474.	400.	372.	438.	868.	1907.	3913.	5285.	1526.	561.	318.			
Turbine Release	kaf	0.0	10.8	32.5	32.5	29.4	32.6	31.5	67.6	125.0	101.2	72.6	70.2	605.9		
Jetflow Release	kaf	32.6	20.7	0.0	0.0	0.0	0.0	0.0	0.0	0.0	0.0	0.0	0.0	53.3		
Spillway Release	kaf	0.0	0.0	0.0	0.0	0.0	0.0	0.0	0.0	0.0	0.0	0.0	0.0	0.0		
Total Release	kaf	32.6	31.5	32.5	32.5	29.4	32.6	31.5	67.6	125.0	101.2	72.6	70.2	659.2		
Total Release	cfs	530.	529.	529.	529.	529.	530.	529.	1099.	2101.	1646.	1181.	1180.			
Evaporation	kaf	2.3	1.3	0.7	0.7	0.7	1.3	2.9	3.5	7.2	8.9	7.4	5.1	42.0		
End-month content	kaf	320.7	318.6	310.7	300.9	295.7#	316.0	395.4	561.5	744.9	729.2	684.4	628.7*			
End-month elevation	ft	6305.5	6305.3	6304.3	6303.1	6302.4	6305.0	6313.9	6328.9	6341.9	6340.9	6337.9	6334.0			
Kortes Reservoir Operations			Initial Content				4.7 Kaf			Operating Limits: Max			4.8 Kaf, 6142.73 Ft.			Total
-----			Oct	Nov	Dec	Jan	Feb	Mar	Apr	May	Min	Jun	Jul	Aug	Sep	
-----			-----	-----	-----	-----	-----	-----	-----	-----	-----	-----	-----	-----	-----	
Total Inflow	kaf	32.6	31.5	32.5	32.5	29.4	32.6	31.5	67.6	125.0	101.2	72.6	70.2	659.2		
Total Inflow	cfs	530.	529.	529.	529.	529.	530.	529.	1099.	2101.	1646.	1181.	1180.			
Turbine Release	kaf	32.5	31.5	32.5	32.5	29.4	32.6	31.5	67.6	125.0	101.2	72.6	70.2	659.1		
Spillway Release	kaf	0.0	0.0	0.0	0.0	0.0	0.0	0.0	0.0	0.0	0.0	0.0	0.0	0.0		
Total Release	kaf	32.5	31.5	32.5	32.5	29.4	32.6	31.5	67.6	125.0	101.2	72.6	70.2	659.1		
Total Release	cfs	529.	529.	529.	529.	529.	530.	529.	1099.	2101.	1646.	1181.	1180.			
Min reservoir rels	cfs	529.	529.	529.	529.	529.	529.	529.	529.	529.	529.	529.	529.			
Max reservoir rels	cfs	530.	530.	1100.	1100.	1100.	530.	530.	1100.	2100.	2436.	2336.	1336.			
Pathfinder Reservoir Operations			Initial Content				610.1 Kaf			Operating Limits: Max			1095.0 Kaf, 5853.56 Ft.			Total
-----			Oct	Nov	Dec	Jan	Feb	Mar	Apr	May	Min	Jun	Jul	Aug	Sep	
-----			-----	-----	-----	-----	-----	-----	-----	-----	-----	-----	-----	-----	-----	
Sweetwater Inflow	kaf	3.2	3.5	3.5	3.7	3.8	5.0	12.6	18.1	15.9	4.8	2.1	1.2	77.4		
Kortes-Path Gain	kaf	1.3	-0.1	0.7	1.2	2.4	4.7	6.3	7.9	2.3	3.2	5.8	3.5	39.2		
Inflow from Kortes	kaf	32.5	31.5	32.5	32.5	29.4	32.6	31.5	67.6	125.0	101.2	72.6	70.2	659.1		
Total Inflow	kaf	37.0	34.9	36.7	37.4	35.6	42.3	50.4	93.6	143.2	109.2	80.5	74.9	775.7		
Total Inflow	cfs	602.	587.	597.	608.	641.	688.	847.	1522.	2407.	1776.	1309.	1259.			
Turbine Release	kaf	0.0	22.6	23.3	23.3	21.0	45.1	46.6	66.2	127.9	132.0	93.4	35.8	637.2		
Jetflow Release	kaf	4.6	4.5	4.6	4.6	4.2	4.6	4.5	4.6	4.5	4.6	4.6	4.5	54.4		
Spillway Release	kaf	0.0	0.0	0.0	0.0	0.0	0.0	0.0	0.0	0.0	0.0	0.0	0.0	0.0		
Total Release	kaf	4.6	27.1	27.9	27.9	25.2	49.7	51.1	70.8	132.4	136.6	98.0	40.3	691.6		
Total Release	cfs	75.	455.	454.	454.	454.	808.	859.	1151.	2225.	2222.	1594.	677.			
Evaporation	kaf	4.3	2.4	1.2	1.3	1.2	2.8	5.2	6.3	9.5	10.3	8.8	6.8	60.1		
End-month content	kaf	638.2	643.6	651.2	659.4	668.6	658.4	652.5	669.0	670.3	632.6	606.3	634.1			
End-month elevation	ft	5830.0	5830.3	5830.8	5831.3	5831.9	5831.3	5830.9	5831.9	5832.0	5829.6	5827.9	5829.7			
Jetflow Release	cfs	75.	76.	75.	75.	76.	75.	76.	75.	76.	75.	75.	76.			
Min Release	cfs	75.0	75.0	75.0	75.0	75.0	75.0	75.0	75.0	75.0	75.0	75.0	75.0			
Alcovia Reservoir Operations			Initial Content				180.6 Kaf			Operating Limits: Max			184.4 Kaf, 5500.00 Ft.			Total
-----			Oct	Nov	Dec	Jan	Feb	Mar	Apr	May	Min	Jun	Jul	Aug	Sep	
-----			-----	-----	-----	-----	-----	-----	-----	-----	-----	-----	-----	-----	-----	
Total Inflow	kaf	4.6	27.1	27.9	27.9	25.2	49.7	51.1	70.8	132.4	136.6	98.0	40.3	691.6		
Total Inflow	cfs	75.	455.	454.	454.	454.	808.	859.	1151.	2225.	2222.	1594.	677.			
Turbine Release	kaf	28.6	26.8	27.7	27.7	25.0	49.3	26.8	60.3	117.7	116.7	81.1	29.9	617.6		
Spillway Release	kaf	0.0	0.0	0.0	0.0	0.0	0.0	0.0	0.0	0.0	0.0	0.0	0.0	0.0		
Casper Canal Release	kaf	0.0	0.0	0.0	0.0	0.0	0.0	0.0	9.5	13.3	18.3	15.5	9.3	65.9		
Total Release	kaf	28.6	26.8	27.7	27.7	25.0	49.3	26.8	69.8	131.0	135.0	96.6	39.2	683.5		
Total Release	cfs	465.	450.	450.	450.	450.	802.	450.	1135.	2202.	2196.	1571.	659.			
Evaporation	kaf	0.7	0.3	0.2	0.2	0.2	0.4	0.8	1.0	1.4	1.6	1.4	1.1	9.3		
End-month content	kaf	155.9*	155.9*	155.9*	155.9*	155.9*	155.9*	179.4*	179.4*	179.4*	179.4*	179.4*	179.4*			
End-month elevation	ft	5487.9	5487.9	5487.9	5487.9	5487.9	5487.9	5498.0	5498.0	5498.0	5498.0	5498.0	5498.0			

NPRAOP V1.1L 01-Oct-2021 Run: 7-Oct-2021 15: 7

Page 2

Based on October 2021 Reasonable Expected April - July Inflow: Seminole 762.4 kaf, Sweetwater 51.4 kaf, Glendo 126.9 kaf

NORTH PLATTE RIVER OPERATING PLAN  
Year Beginning Oct 2021

Gray Reef Reservoir Operations		Initial Content					1.6 Kaf		Operating Limits: Max			1.1 Kaf, 5327.42 Ft.			Total
		Oct	Nov	Dec	Jan	Feb	Mar	Apr	May	Min Jun	0.0 Jul	Aug	5306.00 Ft. Sep		
		-----	-----	-----	-----	-----	-----	-----	-----	-----	-----	-----	-----		
Total Inflow	kaf	28.6	26.8	27.7	27.7	25.0	49.3	26.8	60.3	117.7	116.7	81.1	29.9	617.6	
Total Inflow	cfs	465.	450.	450.	450.	450.	802.	450.	981.	1978.	1898.	1319.	502.		
Total Release	kaf	29.1#	26.8	27.7	27.7	25.0	49.3	26.8	60.3	117.6	116.6	81.0	29.8	617.7	
Total Release	cfs	473.	450.	450.	450.	450.	802.	450.	981.	1976.	1896.	1317.	501.		
Min reservoir rels	cfs	450.	450.	450.	450.	450.	450.	450.	500.	500.	1850.	500.	500.		
Max reservoir rels	cfs	461.	450.	450.	450.	450.	801.	450.	980.	2912.	1900.	1317.	500.		
Glendo Reservoir Operations		Initial Content					138.4 Kaf		Operating Limits: Max			763.0 Kaf, 4653.00 Ft.			Total
		Oct	Nov	Dec	Jan	Feb	Mar	Apr	May	Min Jun	63.2 Jul	Aug	4573.94 Ft. Sep		
		-----	-----	-----	-----	-----	-----	-----	-----	-----	-----	-----	-----		
Alcova-Glendo Gain	kaf	11.4	10.9	7.3	9.0	15.2	18.3	46.3	67.2	13.5	-0.1	-2.3	8.5	205.2	
Infl from Gray Reef	kaf	29.1	26.8	27.7	27.7	25.0	49.3	26.8	58.9	116.2	115.2	79.6	28.4	610.7	
Total Inflow	kaf	40.5	37.7	35.0	36.7	40.2	67.6	73.1	127.5	131.1	116.5	78.7	38.3	822.9	
Total Inflow	cfs	659.	634.	569.	597.	724.	1099.	1228.	2074.	2203.	1895.	1280.	644.		
Turbine Release	kaf	0.0	0.0	0.0	0.0	0.0	0.0	22.3	65.0	151.4	227.2	220.1	11.7	697.7	
Low Flow Release	kaf	0.0	0.0	0.0	0.0	0.0	0.0	1.5	1.5	1.5	1.5	1.5	0.4	7.9	
Spillway Release	kaf	0.0	0.0	0.0	0.0	0.0	0.0	0.0	0.0	0.0	0.0	0.0	0.0	0.0	
Irrigation Release	kaf	0.0	0.0	0.0	0.0	0.0	0.0	0.0	0.0	0.0	40.2	50.0	0.0	90.2	
Total Release	kaf	0.0	0.0	0.0	0.0	0.0	0.0	23.8	66.5	152.9	268.9	271.6	12.1	795.8	
Total Release	cfs	0.	0.	0.	0.	0.	0.	400.	1082.	2570.	4373.	4417.	203.		
Evaporation	kaf	1.3	0.8	0.7	0.7	0.8	1.9	3.1	4.9	6.8	6.5	3.9	1.9	33.3	
End-month content	kaf	177.6	214.5	248.8	284.8	324.2	389.9	436.1	490.8	460.8#	300.1	100.0#	122.9#		
End-month elevation	ft	4599.3	4604.9	4609.6	4614.1	4618.7	4625.7	4630.1	4634.9	4632.3	4616.0	4584.1	4589.3		
Guernsey Reservoir Operations		Initial Content					0.0 Kaf		Operating Limits: Max			45.6 Kaf, 4419.99 Ft.			Total
		Oct	Nov	Dec	Jan	Feb	Mar	Apr	May	Min Jun	0.0 Jul	Aug	4370.00 Ft. Sep		
		-----	-----	-----	-----	-----	-----	-----	-----	-----	-----	-----	-----		
Glendo-Guerns Gain	kaf	3.3	2.0	1.8	1.5	1.1	0.7	5.1	9.2	3.0	2.3	0.6	5.0	35.6	
Inflow from Glendo	kaf	0.0	0.0	0.0	0.0	0.0	0.0	23.8	66.5	152.9	268.9	271.6	12.1	795.8	
Total Inflow	kaf	3.3	2.0	1.8	1.5	1.1	0.7	28.9	75.7	155.9	271.2	272.2	17.1	831.4	
Total Inflow	cfs	54.	34.	29.	24.	20.	11.	486.	1231.	2620.	4411.	4427.	287.		
Turbine Release	kaf	0.0	0.0	0.0	0.0	0.0	0.0	0.0	53.6	51.8	53.6	53.6	42.3	254.9	
Seepage	kaf	0.3	0.2	0.3	0.3	0.2	0.3	0.4	1.2	3.0	3.1	2.5	0.3	12.1	
Spillway Release	kaf	3.0	1.8	1.5	1.2	0.9	0.4	0.0	20.2	100.1	213.4	215.2	0.0	557.7	
Total Release	kaf	3.3	2.0	1.8	1.5	1.1	0.7	0.4	75.0	154.9	270.1	271.3	42.6	824.7	
Total Release	cfs	54.	34.	29.	24.	20.	11.	7.	1220.	2603.	4393.	4412.	716.		
Evaporation	kaf	0.0	0.0	0.0	0.0	0.0	0.0	0.5	0.7	1.0	1.1	0.9	0.5	4.7	
End-month content	kaf	0.0	0.0	0.0	0.0	0.0	0.0	28.0*	28.0*	28.0*	28.0*	28.0*	2.0*		
End-month elevation	ft	4370.0	4370.0	4370.0	4370.0	4370.0	4370.0	4411.9	4411.9	4411.9	4411.9	4411.9	4388.0		
Ownership EOM Cont	kaf	1298.3	1338.5	1372.5	1406.9	1450.3	1526.1	1697.3	1934.6	2089.3	1875.2	1604.0	1573.0		



## Page 9 of 11

Page 3

OWNERSHIP OPERATIONS  
-----

		Oct	Nov	Dec	Jan	Feb	Mar	Apr	May	Jun	Jul	Aug	Sep	Total
Net Accrual	kaf	33.4	30.9	28.4	27.3	29.9	61.7	129.4	261.8	184.2	0.0	0.0	0.0	787.0
Evaporation	kaf	1.0	0.7	0.4	0.5	0.6	1.4	3.0	4.8	10.1	12.8	10.2	6.0	51.5
Deliv fm Ownership	kaf	0.0	0.0	0.0	0.0	0.0	0.0	0.0	0.0	0.0	75.7	225.6	1.5	302.8
End-month Ownership	kaf	185.6	216.5	244.9	272.2	302.1	363.8	493.2	755.0	939.2	850.7	614.9	607.4	

		Oct	Nov	Dec	Jan	Feb	Mar	Apr	May	Jun	Jul	Aug	Sep	Total
Net Accrual	kaf	0.0	0.0	9.1	10.5	16.3	14.1	0.0	0.0	0.0	0.0	0.0	0.0	50.0
Evaporation/Seepage	kaf	0.0	0.0	0.0	0.0	0.0	0.1	0.4	0.4	0.6	0.6	0.0	0.0	2.1
Deliv fm Ownership	kaf	0.0	0.0	1.8	1.5	1.1	0.7	0.0	0.0	0.0	42.9	0.0	0.0	48.0
End-month Ownership	kaf	0.0	0.0	7.3	16.3	31.5	44.9	44.5	44.1	43.5	0.0	0.0	0.0	

Inland Lakes		Initial Ownership 0.0 Kaf, Accrued this water year: 46.0 Kaf												
		Oct	Nov	Dec	Jan	Feb	Mar	Apr	May	Jun	Jul	Aug	Sep	Total
Net Accrual	kaf	14.7	12.9	0.0	0.0	0.0	0.0	18.4	0.0	0.0	0.0	0.0	0.0	46.0
Evaporation/Seepage	kaf	0.0	0.0	0.0	0.0	0.0	0.1	0.6	0.4	0.0	0.0	0.0	0.0	1.1
Transfr fm Ownership	kaf	3.3	2.0	0.0	0.0	0.0	0.0	0.0	40.2	0.0	0.0	0.0	0.0	45.5
End-month Ownership	kaf	11.4	22.3	22.3	22.3	22.3	22.2	40.6	0.0	0.0	0.0	0.0	0.0	

		Oct	Nov	Dec	Jan	Feb	Mar	Apr	May	Jun	Jul	Aug	Sep	Total
		----	----	----	----	----	----	----	----	----	----	----	----	-----
Net Accrual	kaf	0.0	0.0	0.0	0.0	0.0	0.0	0.0	0.0	0.0	0.0	0.0	0.0	0.0
Evaporation	kaf	6.5	3.5	2.0	2.0	1.9	4.1	7.6	8.9	12.2	12.0	10.2	7.9	78.8
Deliv fm Ownership	kaf	0.0	0.0	0.0	0.0	0.0	0.0	0.0	10.9	14.7	19.7	16.9	10.7	72.9
End-month Ownership	kaf	947.0	943.5	941.5	939.5	937.6	933.5	925.9	906.1	879.2	847.5	820.4	801.8	

		Oct	Nov	Dec	Jan	Feb	Mar	Apr	May	Jun	Jul	Aug	Sep	Total
Accrual	kaf	0.0	0.0	0.0	0.0	0.0	4.8	32.4	4.4	0.0	0.0	0.0	0.0	41.6
Evaporation	kaf	1.0	0.5	0.3	0.3	0.3	0.6	1.1	1.6	2.3	2.3	1.9	1.4	13.6
Deliv fm Ownership	kaf	0.0	0.0	0.0	0.0	0.0	0.0	0.0	0.0	0.0	6.0	5.0	4.0	15.0
End-month Ownership	kaf	133.2	132.7	132.4	132.1	131.8	136.0	167.3	170.1	167.8	159.5	152.6	147.2	

		Oct	Nov	Dec	Jan	Feb	Mar	Apr	May	Jun	Jul	Aug	Sep	Total
Accrual	kaf	0.0	0.0	0.0	0.0	0.0	0.0	0.0	37.2	0.0	0.0	0.0	0.0	37.2
Evaporation/Seepage	kaf	0.0	0.0	0.0	0.0	0.0	0.0	0.0	0.1	0.6	0.6	0.0	0.0	1.3
Release	kaf	0.0	0.0	0.0	0.0	0.0	0.0	0.0	0.0	0.0	41.5	0.0	0.0	41.5
End-month total	kaf	5.6	5.6	5.6	5.6	5.6	5.6	5.6	42.7	42.1	0.0	0.0	0.0	

		Oct	Nov	Dec	Jan	Feb	Mar	Apr	May	Jun	Jul	Aug	Sep	Total
Inflow	kaf	0.7	2.5	0.7	0.5	0.6	0.8	0.3	0.6	2.7	1.1	0.7	0.7	11.9
Evaporation	kaf	0.0	0.1	0.1	0.1	0.1	0.1	0.1	0.1	0.1	0.1	0.1	0.1	1.1
Release	kaf	0.0	0.0	0.0	0.0	0.0	0.0	0.0	4.0	1.6	0.5	0.0	0.0	6.1
Ownership	kaf	8.0	10.4	11.0	11.4	11.9	12.6	12.8	9.3	10.3	10.8	11.4	12.0	

[illegible]

Other		Initial Ownership 5.6 Kaf,												
-----		Oct	Nov	Dec	Jan	Feb	Mar	Apr	May	Jun	Jul	Aug	Sep	Total
		-----	-----	-----	-----	-----	-----	-----	-----	-----	-----	-----	-----	-----
Inflow	kaf	0.0	0.0	0.0	0.0	0.0	0.0	0.0	0.0	0.0	0.0	0.0	0.0	0.0
Evaporation	kaf	0.1	0.0	0.0	0.0	0.0	0.0	0.1	0.1	0.1	0.1	0.1	0.1	0.7
Release	kaf	0.0	0.0	0.0	0.0	0.0	0.0	0.0	0.0	0.0	0.4	1.9	0.0	2.3
Ownership	kaf	5.5	5.5	5.5	5.5	5.5	5.5	5.4	5.3	5.2	4.7	2.7	2.6	

NPRAOP V1.1L 01-Oct-2021 Run: 7-Oct-2021 15: 7

Page 4

Based on October 2021 Reasonable Expected April - July Inflow: Seminoe 762.4 kaf, Sweetwater 51.4 kaf, Glendo 126.9 kaf

NORTH PLATTE RIVER OPERATING PLAN  
Year Beginning Oct 2021

OWNERSHIP RECONCILIATION

			Oct	Nov	Dec	Jan	Feb	Mar	Apr	May	Jun	Jul	Aug	Sep	Total
			-----	-----	-----	-----	-----	-----	-----	-----	-----	-----	-----	-----	-----
Physical Evap/Seep	kaf		8.6	4.8	2.8	2.9	2.9	6.4	12.9	16.4	26.0	28.5	22.5	15.5	150.2
Ownership Evap/Seep	kaf		8.6	4.8	2.8	2.9	2.9	6.4	12.9	16.4	26.0	28.5	22.5	15.5	150.2
Physical Gain	kaf		49.8	47.0	38.6	38.8	47.4	82.9	184.1	343.6	351.9	105.1	41.4	37.8	1368.4
Ownership Gain	kaf		49.8	47.0	38.6	38.8	47.4	82.9	184.1	271.6	197.0	1.1	0.7	0.7	959.7
Excess Gain	kaf		0.0	0.0	0.0	0.0	0.0	0.0	0.0	37.2	0.0	0.0	0.0	0.0	37.2
Nat Flow Release	kaf		0.0	0.0	0.0	0.0	0.0	0.0	0.0	34.8	154.9	104.0	40.7	37.1	371.5
Ownership Delivery	kaf		3.3	2.0	1.8	1.5	1.1	0.7	0.0	55.1	16.3	145.2	249.4	16.2	492.6
Excess Release	kaf		0.0	0.0	0.0	0.0	0.0	0.0	0.0	0.0	0.0	41.5	0.0	0.0	41.5
Physical Delivery	kaf		3.3	2.0	1.8	1.5	1.1	0.7	0.0	89.9	171.2	290.7	290.1	53.3	905.6
Irrigation Regmnt	kaf		3.3	2.0	1.8	1.5	1.1	0.7	0.0	89.9	171.2	290.7	290.1	53.3	905.6
Waste	kaf		0.0	0.0	0.0	0.0	0.0	0.0	0.0	0.0	0.0	0.0	0.0	0.0	0.0
Physical EOM Cont	kaf		1298.3	1338.5	1372.5	1406.9	1450.3	1526.1	1697.3	1934.6	2089.3	1875.2	1604.0	1573.0	

IRRIGATION DELIVERY

Kendrick (Casper Canal)		Oct	Nov	Dec	Jan	Feb	Mar	Apr	May	Jun	Jul	Aug	Sep	Total
		-----	-----	-----	-----	-----	-----	-----	-----	-----	-----	-----	-----	-----
Requested	kaf	0.0	0.0	0.0	0.0	0.0	0.0	0.0	9.5	13.3	18.3	15.5	9.3	65.9
Delivered	kaf	0.0	0.0	0.0	0.0	0.0	0.0	0.0	9.5	13.3	18.3	15.5	9.3	65.9
Kendrick (River)		Oct	Nov	Dec	Jan	Feb	Mar	Apr	May	Jun	Jul	Aug	Sep	Total
		-----	-----	-----	-----	-----	-----	-----	-----	-----	-----	-----	-----	-----
Requested	kaf	0.0	0.0	0.0	0.0	0.0	0.0	0.0	1.4	1.4	1.4	1.4	1.4	7.0
Delivered	kaf	0.0	0.0	0.0	0.0	0.0	0.0	0.0	1.4	1.4	1.4	1.4	1.4	7.0
Guernsey Deliveries		Oct	Nov	Dec	Jan	Feb	Mar	Apr	May	Jun	Jul	Aug	Sep	Total
		-----	-----	-----	-----	-----	-----	-----	-----	-----	-----	-----	-----	-----
North Platte Req	kaf	0.0	0.0	1.8	1.5	1.1	0.7	0.0	34.8	152.9	264.1	266.3	38.6	761.8
Glendo Req	kaf	0.0	0.0	0.0	0.0	0.0	0.0	0.0	0.0	2.0	6.0	5.0	4.0	17.0
Inland Lakes Req	kaf	3.3	2.0	0.0	0.0	0.0	0.0	0.0	40.2	0.0	0.0	0.0	0.0	45.5
Total Requirement	kaf	3.3	2.0	1.8	1.5	1.1	0.7	0.0	75.0	154.9	270.1	271.3	42.6	824.3
Seepage	kaf	0.3	0.2	0.3	0.3	0.2	0.3	0.4	1.2	3.0	3.1	2.5	0.3	12.1
Actual Release	kaf	3.3	2.0	1.8	1.5	1.1	0.7	0.4	75.0	154.9	270.1	271.3	42.6	824.7

NPRAOP V1.1L 01-Oct-2021 Run: 7-Oct-2021 15: 7

Page 5

Based on October 2021 Reasonable Expected April - July Inflow: Seminole 762.4 kaf, Sweetwater 51.4 kaf, Glendo 126.9 kaf

NORTH PLATTE RIVER OPERATING PLAN  
Year Beginning Oct 2021

POWER GENERATION

Seminole Power Plant		Oct	Nov	Dec	Jan	Feb	Mar	Apr	May	Jun	Jul	Aug	Sep	Total
Turbine Release	kaf	0.0	10.8	32.5	32.5	29.4	32.6	31.5	67.6	125.0	101.2	72.6	70.2	605.9
Bypass	kaf	32.6	20.7	0.0	0.0	0.0	0.0	0.0	0.0	0.0	0.0	0.0	0.0	53.3
Maximum generation	gwh	0.000	1.495	25.551	25.319	22.631	25.320	25.806	29.361	31.560	33.477	33.482	31.624	285.626
Actual generation	gwh	0.000	1.495	4.484	4.455	4.008	4.469	4.476	10.375	20.753	17.241	12.296	11.678	95.730
Percent max generation		0.	100.	18.	18.	18.	18.	17.	35.	66.	52.	37.	37.	34.
Average kwh/af		0.	138.	138.	137.	136.	137.	142.	153.	166.	170.	169.	166.	158.
Kortes Power Plant		Oct	Nov	Dec	Jan	Feb	Mar	Apr	May	Jun	Jul	Aug	Sep	Total
Turbine Release	kaf	32.5	31.5	32.5	32.5	29.4	32.6	31.5	67.6	125.0	101.2	72.6	70.2	659.1
Bypass	kaf	0.0	0.0	0.0	0.0	0.0	0.0	0.0	0.0	0.0	0.0	0.0	0.0	0.0
Maximum generation	gwh	28.346	26.712	27.606	27.606	24.940	27.606	26.712	27.606	26.712	27.606	27.606	26.712	325.770
Actual generation	gwh	5.590	5.418	5.590	5.590	5.057	5.607	5.418	11.627	21.500	17.406	12.487	12.074	113.364
Percent max generation		20.	20.	20.	20.	20.	20.	20.	42.	80.	63.	45.	45.	35.
Average kwh/af		172.	172.	172.	172.	172.	172.	172.	172.	172.	172.	172.	172.	172.
Fremont Canyon		Oct	Nov	Dec	Jan	Feb	Mar	Apr	May	Jun	Jul	Aug	Sep	Total
Turbine Release	kaf	0.0	22.6	23.3	23.3	21.0	45.1	46.6	66.2	127.9	132.0	93.4	35.8	637.2
Bypass	kaf	4.6	4.5	4.6	4.6	4.2	4.6	4.5	4.6	4.5	4.6	4.6	4.5	54.4
Maximum generation	gwh	45.520	44.231	45.795	45.874	41.496	45.948	44.383	45.923	44.507	45.839	45.464	43.994	538.974
Actual generation	gwh	0.000	6.110	6.310	6.321	5.707	12.255	12.642	17.978	34.795	35.782	25.112	9.627	172.639
Percent max generation		0.	14.	14.	14.	14.	27.	28.	39.	78.	78.	55.	22.	32.
Average kwh/af		0.	270.	271.	271.	272.	272.	271.	272.	272.	271.	269.	269.	271.
Alcova Power Plant		Oct	Nov	Dec	Jan	Feb	Mar	Apr	May	Jun	Jul	Aug	Sep	Total
Turbine Release	kaf	28.6	26.8	27.7	27.7	25.0	49.3	26.8	60.3	117.7	116.7	81.1	29.9	617.6
Bypass	kaf	0.0	0.0	0.0	0.0	0.0	0.0	0.0	0.0	0.0	0.0	0.0	0.0	0.0
Maximum generation	gwh	27.179	26.588	27.472	27.472	24.820	27.472	26.275	27.552	26.656	27.552	27.552	26.656	323.246
Actual generation	gwh	3.950	3.645	3.767	3.767	3.400	6.705	3.698	8.442	16.478	16.338	11.354	4.186	85.730
Percent max generation		15.	14.	14.	14.	14.	24.	14.	31.	62.	59.	41.	16.	27.
Average kwh/af		138.	136.	136.	136.	136.	136.	138.	140.	140.	140.	140.	140.	139.
Glendo Power Plant		Oct	Nov	Dec	Jan	Feb	Mar	Apr	May	Jun	Jul	Aug	Sep	Total
Turbine Release	kaf	0.0	0.0	0.0	0.0	0.0	0.0	22.3	65.0	151.4	227.2	220.1	11.7	697.7
Bypass	kaf	0.0	0.0	0.0	0.0	0.0	0.0	1.5	1.5	1.5	41.7	51.5	0.4	98.1
Maximum generation	gwh	0.000	0.000	0.000	0.000	0.000	0.000	24.260	26.550	26.047	24.145	18.379	12.803	132.184
Actual generation	gwh	0.000	0.000	0.000	0.000	0.000	0.000	2.426	7.325	17.206	24.145	18.379	0.750	70.231
Percent max generation		0.	0.	0.	0.	0.	0.	10.	28.	66.	100.	100.	6.	53.
Average kwh/af		0.	0.	0.	0.	0.	0.	109.	113.	114.	106.	84.	64.	101.
Guernsey Power Plant		Oct	Nov	Dec	Jan	Feb	Mar	Apr	May	Jun	Jul	Aug	Sep	Total
Turbine Release	kaf	0.0	0.0	0.0	0.0	0.0	0.0	0.0	53.6	51.8	53.6	53.6	42.3	254.9
Bypass	kaf	3.3	2.0	1.8	1.5	1.1	0.7	0.4	21.4	103.1	216.5	217.7	0.3	569.8
Maximum generation	gwh	0.000	0.000	0.000	0.000	0.000	0.000	3.366	3.795	3.667	3.795	3.795	3.404	21.822
Actual generation	gwh	0.000	0.000	0.000	0.000	0.000	0.000	0.000	3.795	3.667	3.795	3.795	2.580	17.632
Percent max generation		0.	0.	0.	0.	0.	0.	0.	100.	100.	100.	100.	76.	81.
Average kwh/af		0.	0.	0.	0.	0.	0.	0.	71.	71.	71.	71.	61.	69.