

2021 Land Budget Overview

Platte River Recovery Implementation Program

For More Information Contact: Jason Farnsworth, farnsworthj@headwaterscorp.com (308) 237-5728

2021 Land Budget Overview By Budget Line Item

Budget Line Item	Description	Estimated Expenditure***
LP-2	Adaptive Management Species Habitat Actions*	\$1,101,397
LP-3	New Land Acquisitions, LHIE Fees, & Property Taxes	\$1,454,650
LP-4	Property Maintenance & Agricultural Operations**	\$306,150
LP-6	Land Plan Special Advisors	\$20,000
LP-7	Public Access Management	\$40,000
WPLW-1	Property Maintenance for Water Properties	\$38,400

* Includes \$50,000 in LP-2 for new acquisitions in 2021.

** Includes \$50,000 in LP-4 for new acquisitions in 2021.

*** The budget items have been reviewed and approved by the LAC on November 3, 2020.

2021 Budget Overview By Complex

Complex	Estimated Expenditure	Estimated Income
Non-Complex Tracts	\$304,210	\$24,220
Plum Creek "Complex"	\$45,600	\$12,350
Cottonwood Ranch Complex	\$174,589	\$14,135
Elm Creek Complex	\$36,823	\$17,950
Pawnee Complex	\$59,057	\$585
Fort Kearny Complex	\$66,570	\$37,700
Minden-Gibbon Complex	\$22,500	\$0
Clark Island Complex	\$85,059	\$32,290
Shoemaker Island Complex	\$24,795	\$42,595
Chapman Complex	\$488,344	\$3,640
Water Properties	\$38,400	\$9,000
New Acquisitions (Estimated 2)*	\$100,000	\$0
Total	\$1,445,947	\$194,465

* \$50K for maintenance & \$50K for species habitat

2021 Budget Priority Areas by Budget Line Item

LP-2 – Adaptive Management Species Habitat Actions: Species habitat priorities are focused on creation and maintenance of suitable complex and non-complex habitat for Program target species. Includes Habitat Enhancement at Tract 2020002 & Chapman Complex

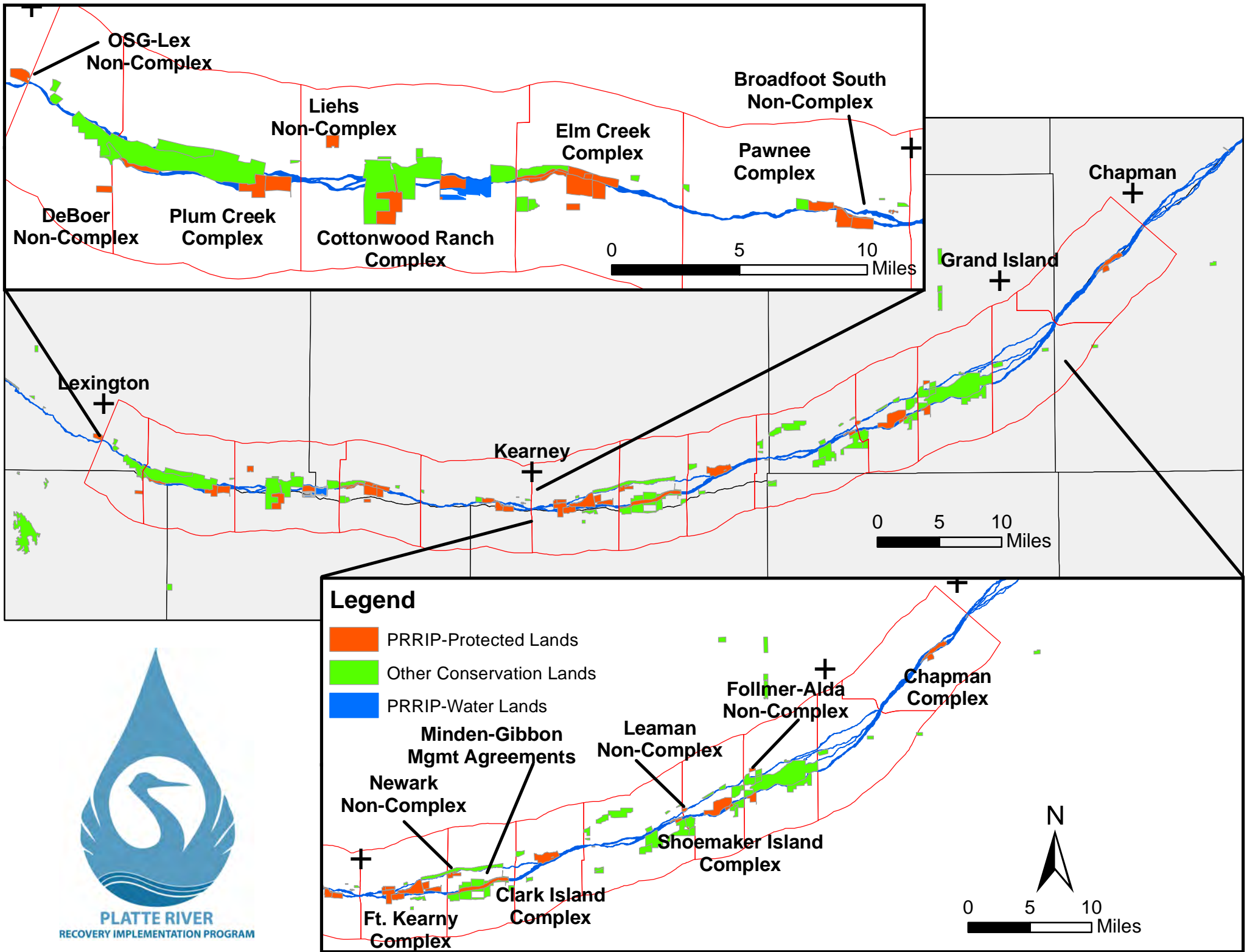
LP-3 – New Land Acquisitions: Land acquisition priorities include identification and acquisition of lands for construction of an additional 60 acres of off-channel sand and water habitat for least tern and piping plover nesting habitat and identification and acquisition of lands that could count towards the First Increment Extension habitat land "plus up" of 1,500 acres.

LP-4 – Property Maintenance & Agricultural Operations: 2020 priorities include maintenance of basic land infrastructure such as facilities, roads, and fences as well as fulfilling basic ownership obligations like noxious weed control and ROW mowing.

LP-6 – Land Plan Special Advisors: Priorities for special advisors include administration of agricultural leases and associated FSA obligations, crop management and marketing, and assistance in cropland conversions.

LP-7 – Public Access Management: Nebraska Game and Parks Commission will manage public access to Program lands.

WPLW-1 – Property Maintenance for Water Properties: 2020 priorities include maintenance of basic land infrastructure such as facilities, roads, and fences as well as fulfilling basic ownership obligations like noxious weed control and ROW mowing.



Property Identification Key:

2008001 – PRRIP Wyoming Property
2008002 - NPPD Cottonwood Ranch
2009001 – PRRIP Fox Tract
2009002 – PRRIP Bartels Tract
2009003 - PRRIP Dyer Tract
2009004 – PRRIP Hostetler Tract
2009005 – PRRIP McCormick Tract
2009006 - PRRIP Stall Tract
2009007 - PRRIP Cook Tract
2009008 - PRRIP Broadfoot Newark Tract
2010001 - PRRIP Morse Tract
2010002 - Broadfoot Kearney South Tract
2010003 – PRRIP Sherrerd/Clark Easement
2010004 – PRRIP Binfield Tract
2011001 - PRRIP East Leaman Tract
2011002 - PRRIP Follmer Alda Tract
2012001 – PRRIP Sullwold Tract
2012002 – PRRIP Johns Tract
2012003 – PRRIP Blessing Tract
2012004 - PRRIP DeBore Tract
2013001 - PRRIP Liehs Tract
2014002 - PRRIP Volentine Tract
2015001 – PRRIP Speidell Tract
2015002 - PRRIP BELF Tract
2015003 – Blue Hole East
2018001 – PRRIP Dippel Tract
2019001 – PRRIP Robinson Tract
2020001 – PRRIP Bergren Tract
2020002 - PRRIP Lex Pit Tract
Agreement #10 (1605) - P. Broadfoot
Agreement #11 (1008) - NE DOR Lease

W201602 – PRRIP Lindstrum Tract
W201701 – PRRIP Edlund Tract
W201702 - PRRIP Albrecht Tract
W201703 - PRRIP Lakeside Tract

Personnel Responsibility Key

JB – Justin Brei (Biosystems Engineer)
MH – Malinda Henry (Director of Biological and Ecological Services)
JJ – Jim Jenniges (NPPD)
BS – Bruce Sackett (Director of Acquisitions)
TT – Tim Tunnell (Senior Land Manager)
ST – Seth Turner (Senior Water Resources Engineer)
KW – Kevin Werbylo (Water Resource Engineer)

LP-2	Priority Area: <i>Adaptive Management</i>		Total	%
	Item(s): <i>Turtle Fencing</i>	Installation of 5,000 LF of Turtle Fencing	\$15,000	1%
	Priority Area: <i>Species Habitat</i>			
	Item(s): <i>Create Least Tern & Piping Plover OCSW Habitat</i>	Tract 2020002 (Lex pit) Predator Fence (1,200 LF)	\$11,500	
		Tract 2020002 (Lex pit) LT/PP OCSW Habitat Enhancement	\$250,000	
		Subtotal	\$261,500	24%
	Item(s): <i>Maintain Suitable In- and Off-Channel Sand & Water Habitat</i>	Herbicide applications on OCSW peninsulas to maintain bare sand nesting habitat	\$19,500	
		Tract 2010002 Remove Piles, Smooth, & Dynamite	\$1,000	
		Subtotal	\$20,500	2%
	Item(s): <i>Maintain Suitable Palustrine Wetland Habitat</i>	Irrigation Well Pumping	\$8,400	
		Brush, tree, cattail herbicide spraying	\$24,500	
		Prescribed Burning	\$3,010	
		Subtotal	\$35,910	3%
	Item(s): <i>Improve Target Species Sand and Water Habitat</i>	Remove Blow Sand from Predator Fences	\$10,000	
		Herbicide treatment on south bank to kill vegetation prior to disking	\$5,000	
		Disking if necessary to provide in-channel vegetation control	\$134,350	
		Clear Island in Main Channel	\$15,000	
		Clear Islands on Neighbors	\$30,000	
		Tract 2019001 Habitat Enhancement	\$176,144	
		Tract 2020001 Habitat Enhancement	\$290,700	
		Subtotal	\$661,194	60%
	Item(s): <i>Whooping Crane Grassland / Wet Meadow Habitat</i>	Prescribed Burning	\$42,293	
		Russian olive & Tree Pile Removal	\$15,000	
		Subtotal	\$57,293	5%
		Existing Land Subtotal	\$1,051,397	95%
		2020 New Acquisitions	\$50,000	5%
		LP-2 Budget Total	\$1,101,397	100%

LP-3	Priority Area: Land Acquisitions		Total	%
	Item(s): <i>Land Acquisition, Property Taxes and Associated Fees</i>	Land interest holding entity (LIHE)	\$55,000	4%
		Property Taxes	\$163,900	11%
		Cottonwood Ranch Sponsorship Agreement	\$17,000	1%
		Land Acquisition Associated Costs	\$18,750	1%
		Buy, Lease or Easement (400 acres)	\$1,200,000	82%
		LP-3 Budget Total	\$1,454,650	100%

LP-4	Priority Area: Operations and Maintenance		Total	%
	Item(s): <i>Basic Property Maintenance Obligations and Needs</i>	Fence & Road Maintenance	\$43,000	14%
		Noxious Weed Control	\$48,500	16%
		Mowing	\$17,000	6%
		Lodge & Quonset Utilites & maintenance	\$5,600	2%
		Cabin Utilites & maintenance	\$2,500	1%
		CWR BSR Project Fence	\$111,500	36%
		Electricity for Livestock wells	\$3,050	1%
		NE Forest Service Costshare Pilot Fuel Reduction Project	\$25,000	8%
		Existing Land Subtotal	\$256,150	76%
		2020 New Acquisitions	\$50,000	16%
		LP-4 Budget Total	\$306,150	100%

WPLW-1	Priority Area: Water Tract Operations and Maintenance		Total	%
	Item(s): <i>Basic Property Maintenance Obligations and Needs</i>	Fence & Road Maintenance	\$5,000	13%
		Fence Replacement	\$13,200	34%
		Noxious Weed Control	\$10,000	26%
		Mowing	\$1,000	3%
		Electricity for Livestock wells	\$200	1%
		Property Taxes	\$9,000	23%
		WPLW-1 Budget Total	\$38,400	100%

2021 Non-Complex Properties Annual Work Plan

General Priorities

- * **Good Neighbor Policy** - *Conduct all actions in accordance with Program's good neighbor policy.*

Adaptive Management Priorities

- * **Species Monitoring** – Monitor whooping crane use of non-complex palustrine wetlands and least tern and piping plover use and productivity at off-channel sand and water nesting sites.

Species Habitat Priorities

- * **Maintain Suitable Off-Channel Sand and Water Nesting Habitat** – Apply pre-emergent herbicide on Tracts 2009008, 2010002, 2011001, and 2011002 OCSW nesting habitat to prevent vegetation encroachment into nesting areas.
- * **Maintain Suitable Palustrine Wetland Roosting Habitat** – Manage vegetation height in the palustrine wetland areas of Tracts 2012004 and 2013001 to maintain suitable unobstructed view widths for whooping crane roosting.
- * **Protecting Other Species of Concern** – Identify presence of and determine methods to protect other species of concern during implementation of land-related activities.

Operations and Maintenance Priorities

- * **Basic Property Maintenance Obligations and Needs** – Fulfill basic property ownership obligations and needs including boundary fence signage, road maintenance, and noxious weed control.
- * **Agricultural Operations** – Oversight of crop leases on Tracts 2009008, 2012004 and 2013001 and hay lease on Tract 2011001.
- * **Sand and Gravel Mining Operations** – *Monitor sand and gravel mining operations on Tracts 2009008 and 2011002.*

NOTE: The budget section of this work plan only contains information for work items that are specific to these tracts. As such, tract-specific research and monitoring actions are presented but system-scale actions like target species and geomorphology/vegetation monitoring are not.

Priority Area: *General***Item(s):** *Land Interest and Tract-Level Restoration and Maintenance Planning*

No.	Management Activities	Target Dates	Person Responsible	Cost (Estimated)	Budget Line Item
NC 1	Coordination of Program land actions with neighboring landowners	Annual	BS	N/A	N/A
NC 2	Tract 2020002 Restoration and Management Plan Development	11/1/20 - 3/1/22	TT, JB	N/A	N/A

Priority Area: *Aaptive Manangement***Item(s):** *Turtle Fencing*

No.	Management Activities	Target Dates	Person Responsible	Cost (Estimated)	Budget Line Item
NC 3	Installation of 5,000 LF of Turtle Fencing	1/1/21 - 4/15/21	MH, TT	\$15,000	LP-2

Priority Area: *Species Habitat***Item(s):** *Create Least Tern & Piping Plover OCSW Habitat*

No.	Management Activities	Target Dates	Person Responsible	Cost (Estimated)	Budget Line Item
NC 4	Tract 2020002 (Lex pit) Permanet & Temporary Predator Fence (1,200 LF)	1/1/21 - 4/15/21	TT	\$11,500	LP-2
NC 5	Tract 2020002 (Lex pit) LT/PP OCSW Habitat Enhancement	1/1/21 - 4/15/21	KW & JB	\$250,000	LP-2

Priority Area: *Species Habitat***Item(s):** *Maintain Suitable In- and Off-Channel Sand & Water Habitat*

No.	Management Activities	Target Dates	Person Responsible	Cost (Estimated)	Budget Line Item
NC 6	Herbicide applications on OCSW peninsulas to maintain bare sand nesting habitat	4/2021 & 9/2021	TT	\$11,000	LP-2
NC 7	Tract 2010002 Remove Piles, Smooth & Dynamite	1/1/21 - 4/15/21	TT	\$1,000	LP-2

Priority Area: *Species Habitat***Item(s):** *Maintain Suitable Palustrine Wetland Habitat*

No.	Management Activities	Target Dates	Person Responsible	Cost (Estimated)	Budget Line Item
NC 8	Irrigation well pumping to augment water level in wetland area of Tract 2013001	3/1/21 - 4/15/21 & 10/1/21-11/15/21	TT	\$3,000	LP-2
NC 9	Tract 2012004 Prescribed burn (70 ac)	3/15/21 – 5/15/21	TT	\$3,010	LP-2
NC 10	Brush, tree, cattail herbicide spraying	1/16/21-11/1/21	TT	\$3,500	LP-2

Priority Area: *Species Habitat***Item(s):** *Other Species of Concern*

No.	Management Activities	Target Dates	Person Responsible	Cost (Estimated)	Budget Line Item
NC 11	Habitat and species surveys on properties where work will occur	As Needed	MH	N/A	N/A
NC 12	Coordination with USFWS and NGPC to identify and mitigate potential impacts associated with land activities	Annual	MH	N/A	N/A

Priority Area: Operations and Maintenance**Item(s):** *Basic Property Maintenance Obligations and Needs*

No.	Management Activities	Target Dates	Person Responsible	Cost (Estimated)	Budget Line Item
NC 13	Fence and road maintenance	Annual	TT	\$1,500	LP-4
NC 14	Noxious weed control	6/1/21 – 8/31/21	TT	\$2,000	LP-4
NC 15	Mowing	7/15/21 - 10/15/21	TT	\$1,500	LP-4
NC 16	Tract 2012004 Electricity	7/15/21 - 10/15/21	TT	\$1,200	LP-4

Priority Area: Operations and Maintenance**Item(s):** *Agricultural Operations*

No.	Management Activities	Target Dates	Person Responsible	Cost (Estimated)	Budget Line Item
NC 17	Oversight of grazing and cropland	Annual	TT	N/A	N/A
NC 18	Oversight of sand and gravel mining	Annual	BS	N/A	N/A

2021 Non-Complex Tracts Budget Summary

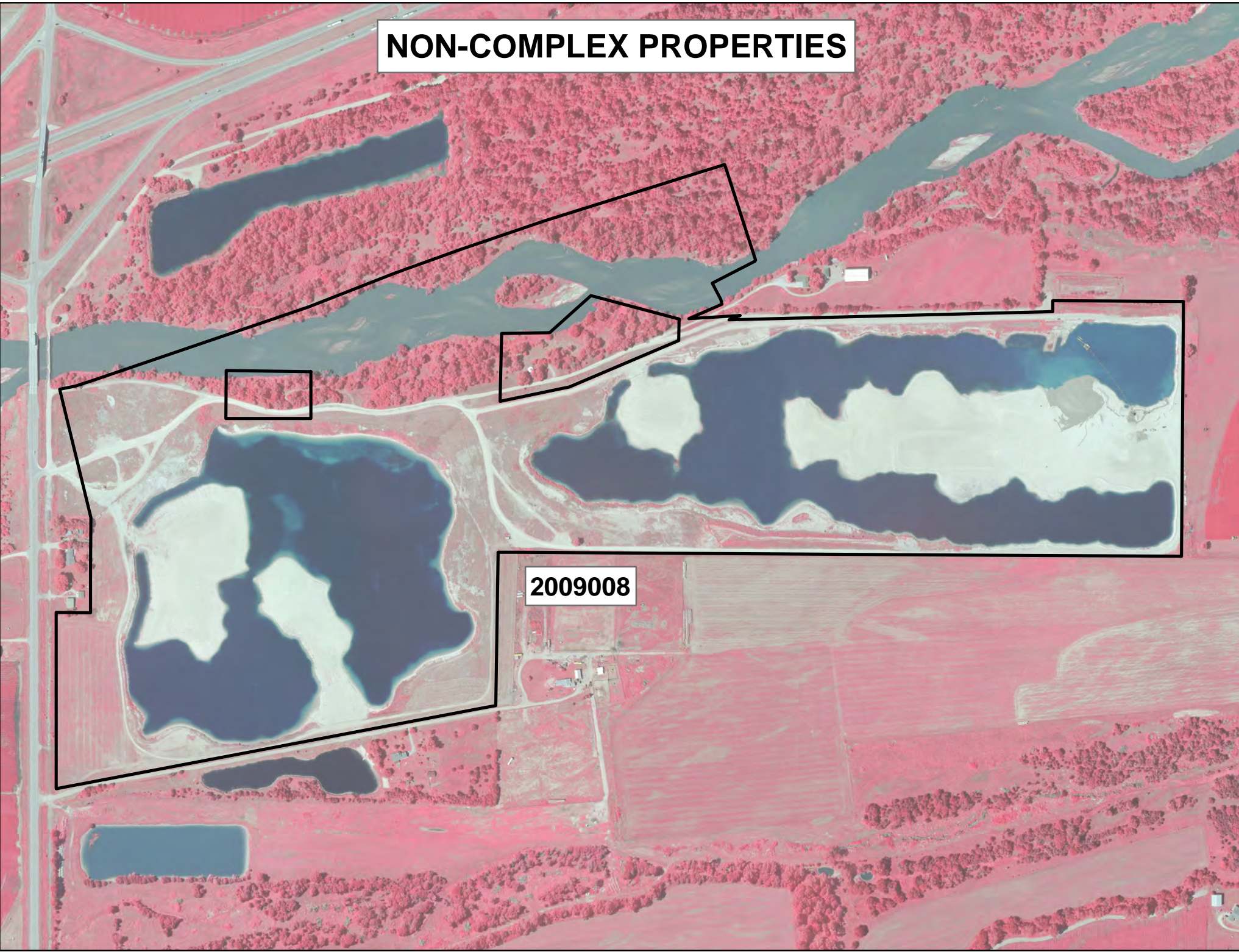
Estimated 2021 Expenditures by Program Budget Line Item

Priority Area	Item	Budget Line Item	Estimated Expenditure
Adaptive Management	Turtle Fencing	LP-2	\$15,000
Species Habitat	Create Least Tern & Piping Plover OCSW Habitat	LP-2	\$261,500
Species Habitat	Maintain Off-Channel Sand & Water Habitat	LP-2	\$12,000
Species Habitat	Create & Maintain Palustrine Wetland Habitat	LP-2	\$9,510
Subtotal			\$298,010
Operations and Maintenance	Property Maintenance and Agricultural Operations	LP-4	\$6,200
Total			\$304,210

Estimated 2021 Revenues

Tract	Item	Estimated Income
Tract 2009008	Hay Income	\$400
Tract 2011001	Hay Income	\$500
Tract 2011002	Sand & Gravel Royalties	\$5,000
Tract 2011002	Cropland Cash Rent Income	\$3,060
Tract 2012004	Cropland Cash Rent Income	\$3,000
Tract 2012004	Grazing Income	\$2,000
Tract 2013001	Irr. Cropland Cash Rent Income	\$6,600
Tract 2013001	Dry Cropland Cash Rent Income	\$3,660
Total		\$24,220

NON-COMPLEX PROPERTIES

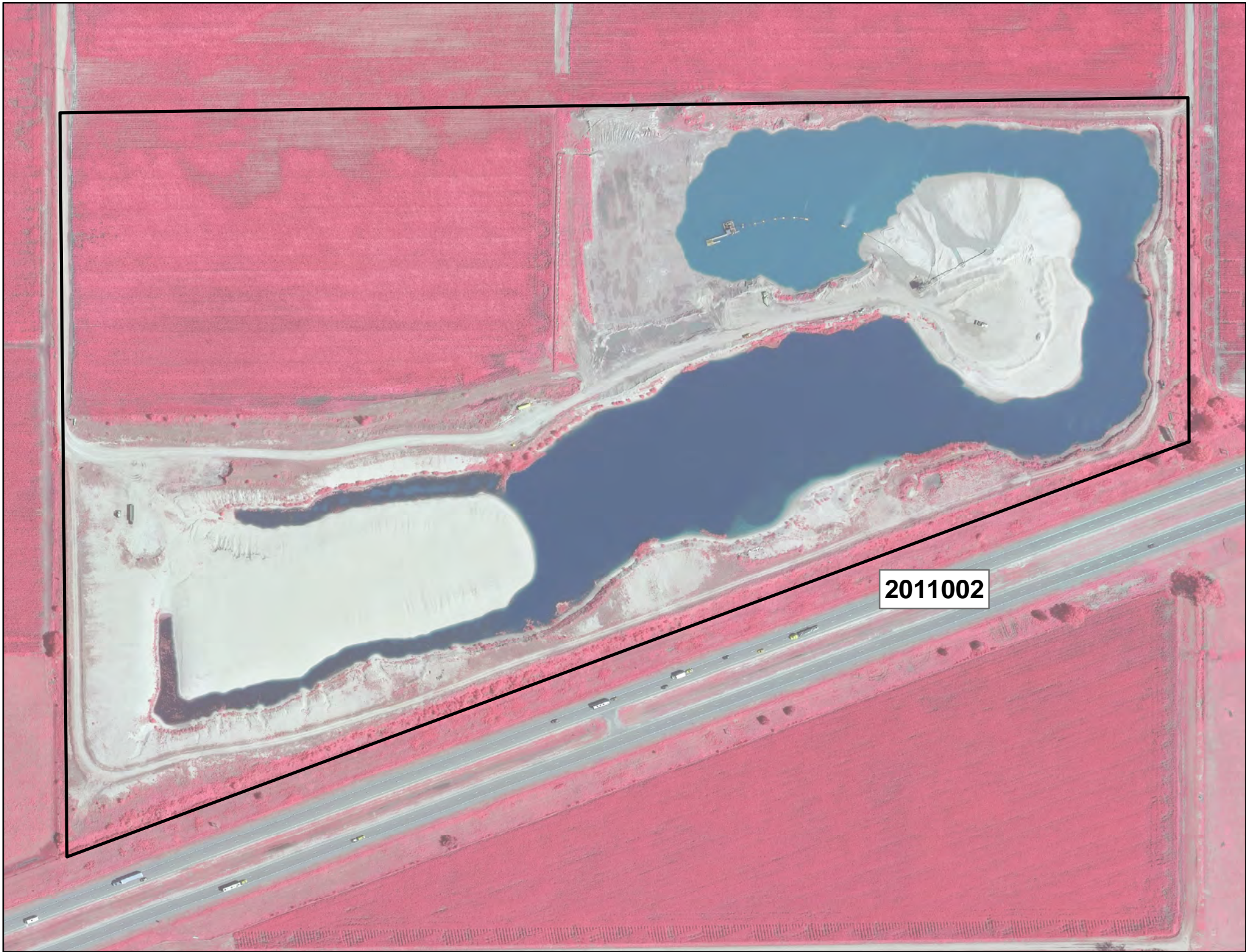


2009008

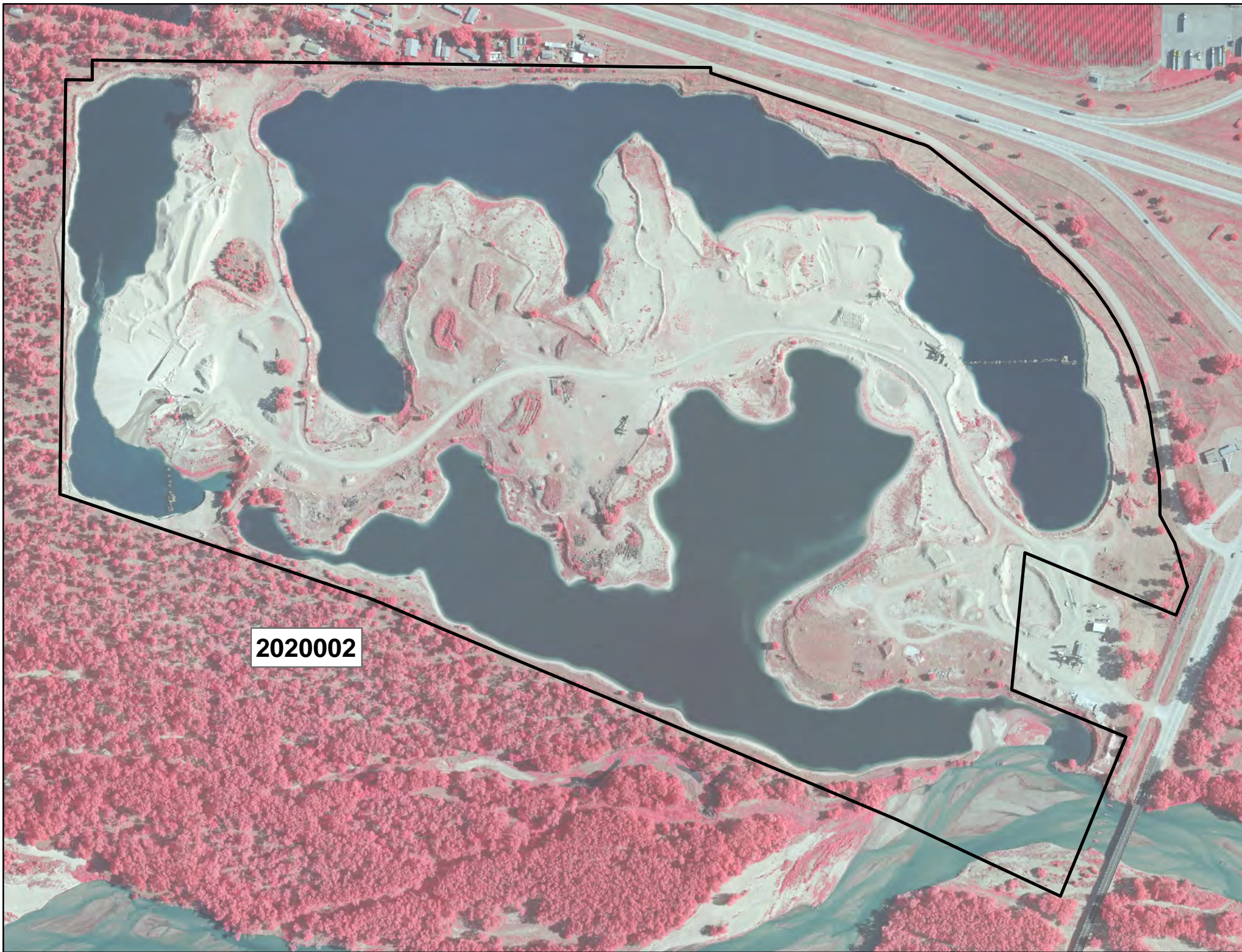




2011001



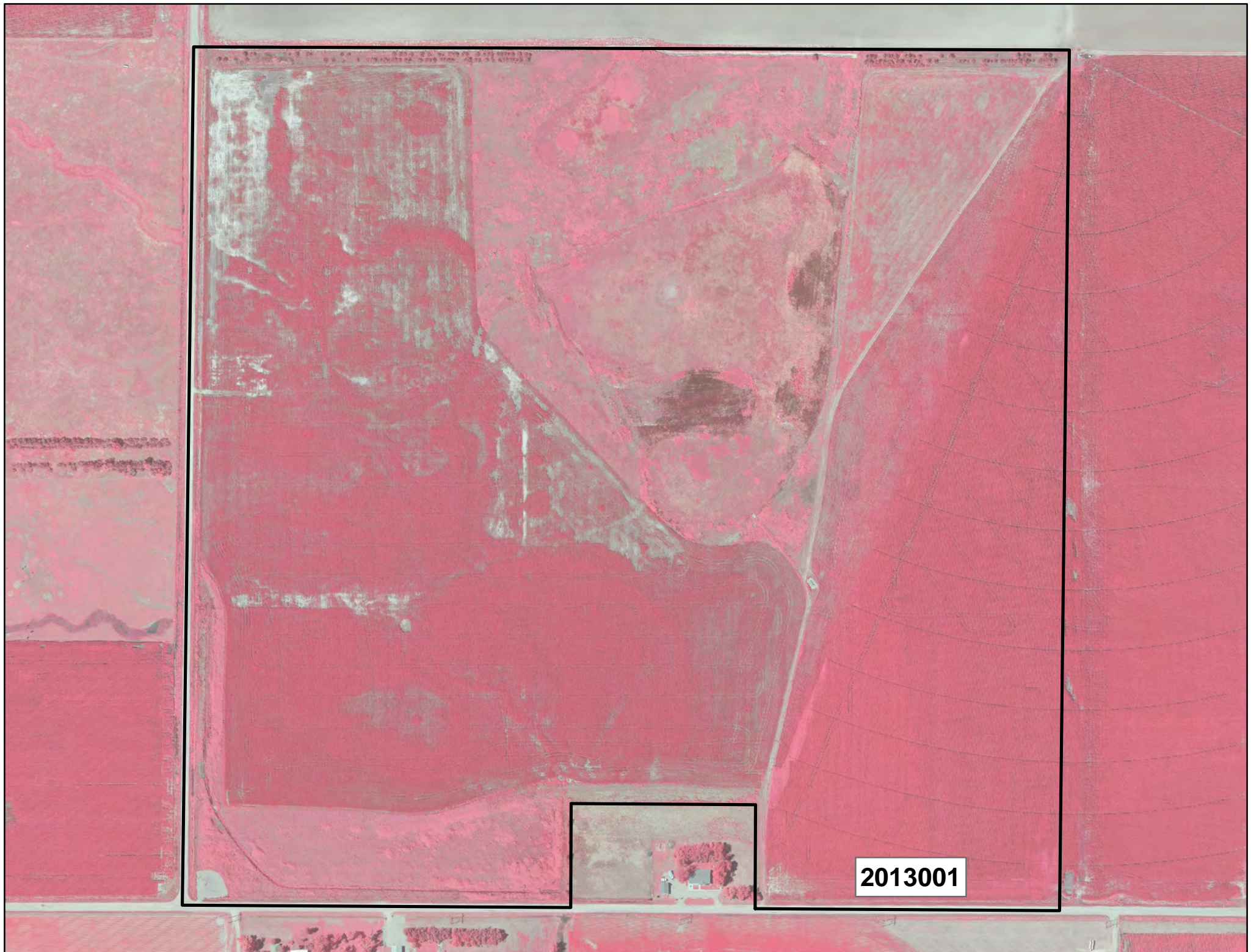
2011002



2020002



2012004



2013001

2021 Plum Creek "Complex" Annual Work Plan

General Priorities

- * **Good Neighbor Policy** - Conduct all actions in accordance with Program's good neighbor policy.

Adaptive Management Priorities

- * **Implementation of full scale sediment augmentation** - Augment 60,000 cubic yards of sediment through mechanical augmentation. Augmentation will occur upstream of the Plum Creek Complex near the J-2 Return.
- * **Species Monitoring** – Monitor whooping crane use of riverine roosting habitat and least tern and piping plover use and productivity at off-channel sand and water nesting sites.

Species Habitat Priorities

- * **Improve Target Species Sand and Water Habitat** – Application of pre-emergent herbicide on OCSW peninsulas to maintain tern and plover nesting habitat. Control in-channel vegetation to maintain suitable unobstructed view widths for whooping cranes.
- * **Protecting Other Species of Concern** – Identify presence of and determine methods to protect other species of concern during implementation of land-related activities.

Operations and Maintenance Priorities

- * **Basic Property Maintenance Obligations and Needs** – Fulfill basic property ownership obligations and needs including boundary fence signage, road maintenance, and noxious weed control.
- * **Agricultural Operations** – Oversight of grazing lease on Tract 2009003. Oversight of cropland/hay leases on Tract 2009007.

NOTE: The budget section of this work plan only contains information for work items that are specific to these tracts. As such, tract-specific research and monitoring actions are presented but system-scale actions like target species and geomorphology/vegetation monitoring are not.

Priority Area: General**Item(s):** *Complex Land Interest and Complex-Level Planning*

No.	Management Activities	Target Dates	Person Responsible	Cost (Estimated)	Budget Line Item
PC 1	Coordination of Program land actions with neighboring landowners	Annual	BS	N/A	N/A
PC 2	Coordinate with NPPD to identify and mitigate potential impacts to leased NPPD nesting islands	Annual	MH	N/A	N/A

Priority Area: Species Habitat**Item(s):** *Improve Target Species Sand and Water Habitat*

No.	Management Activities	Target Dates	Person Responsible	Cost (Estimated)	Budget Line Item
PC 3	Herbicide applications on OCSW peninsulas to maintain bare sand nesting habitat	4/21 & 9/21	TT	\$5,000	LP-2
PC 4	Remove blow sand from predator fences	9/1/21 – 10/1/21	TT	\$10,000	LP-2
PC 5	Disking if necessary to provide in-channel vegetation control (71 ac)	9/1/21 – 10/1/21	TT	\$16,000	LP-2

Priority Area: Species Habitat**Item(s):** *Whooping Crane Grassland / Wet Meadow Habitat*

No.	Management Activities	Target Dates	Person Responsible	Cost (Estimated)	Budget Line Item
PC 6	No items	N/A	N/A	N/A	N/A

Priority Area: *Species Habitat***Item(s): *Other Species of Concern***

No.	Management Activities	Target Dates	Person Responsible	Cost (Estimated)	Budget Line Item
PC 7	Habitat and species surveys on properties where work will occur	As Needed	MH	N/A	N/A
PC 8	Coordination with USFWS and NGPC to identify and mitigate potential impacts associated with land activities	1/1/21 – 4/1/21	MH	N/A	N/A

Priority Area: Operations and Maintenance**Item(s): *Basic Property Maintenance Obligations and Needs***

No.	Management Activities	Target Dates	Person Responsible	Cost (Estimated)	Budget Line Item
PC 9	Fence and road maintenance	Annual	TT	\$1,500	LP-4
PC 10	Noxious weed control	6/1/21 – 8/31/21	TT	\$2,500	LP-4
PC 11	Lodge & Quonset utilities and maintenance	Annual	TT	\$5,600	LP-4
PC 12	Mowing	7/15/21-10/15/21	TT	\$5,000	LP-4

Priority Area: Operations and Maintenance**Item(s): *Agricultural Operations***

No.	Management Activities	Target Dates	Person Responsible	Cost (Estimated)	Budget Line Item
PC 13	Oversight of grazing and cropland leases	Annual	TT	N/A	N/A

2021 Plum Creek Complex Budget Summary

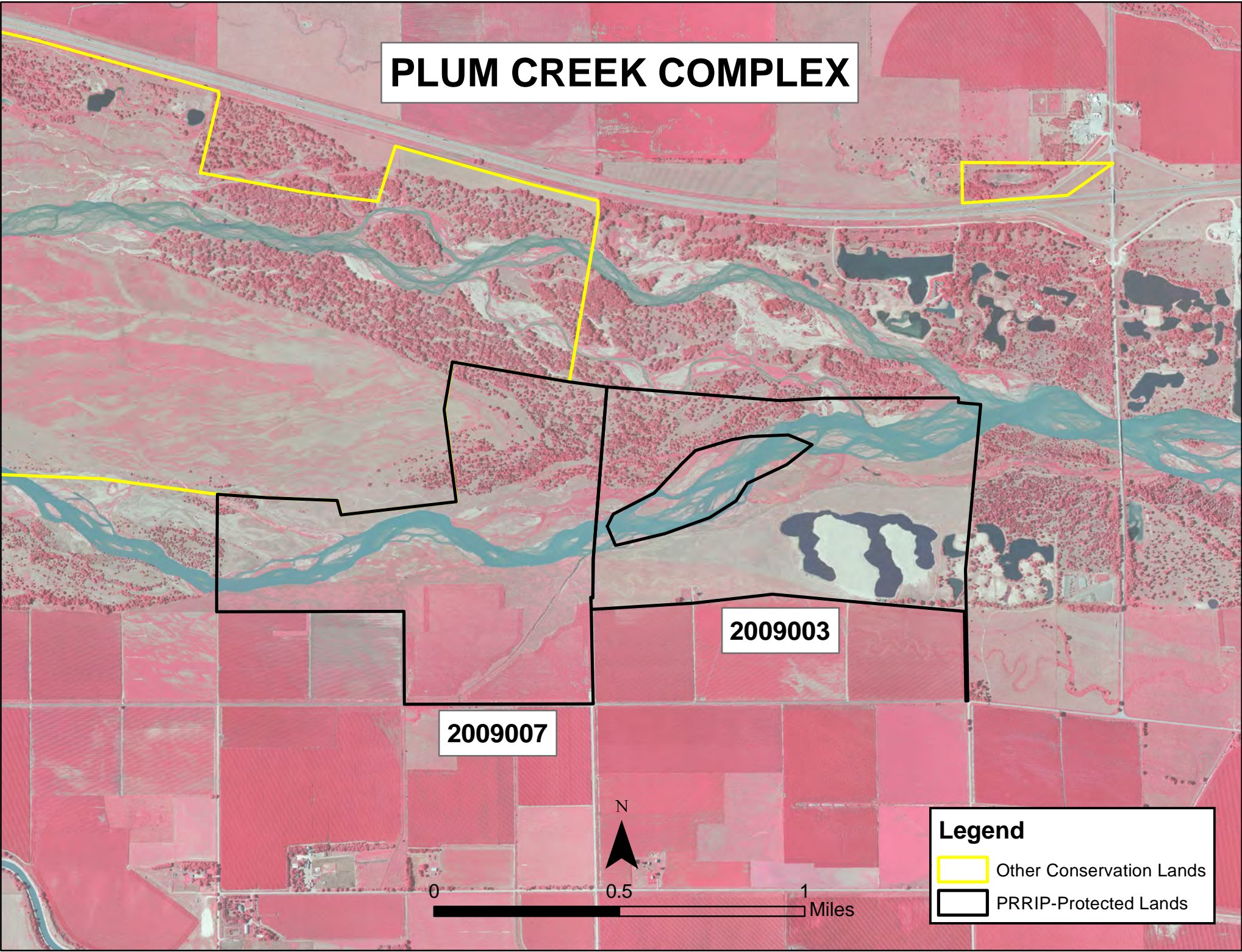
Estimated 2021 Expenditures by Program Budget Line Item

Priority Area	Item	Budget Line Item	Estimated Expenditure
Species Habitat	Target Species Sand and Water Habitat	LP-2	\$31,000
Species Habitat	Whooping Crane Wet Meadow/ Grassland Habitat	LP-2	\$0
Subtotal			\$31,000
Operations and Maintenance	Property Maintenance and Agricultural Operations	LP-4	\$14,600
Total			\$45,600

Estimated 2021 Revenues

Tract	Item	Estimated Income
Tract 2009003	NPPD Habitat Lease	\$500
Tract 2009003	Grazing Income	\$3,300
Tract 2009007	Haying Income	\$3,000
Tract 2009007	Cropland Income	\$5,550
Total		\$12,350

PLUM CREEK COMPLEX



2009003

2009007



0 0.5 1 Miles

Legend

-  Other Conservation Lands
-  PRRIP-Protected Lands

2021 Cottonwood Ranch Complex Annual Work Plan

General Priorities

- * **Good Neighbor Policy** - Conduct all actions in accordance with Program's good neighbor policy.

Adaptive Management Priorities

- * **Species Monitoring** – Monitor whooping crane use of riverine and off-channel palustrine wetland roosting habitat and least tern and piping plover use and productivity at off-channel sand and water nesting sites.

Species Habitat Priorities

- * **Maintain Target Species Sand and Water Habitat** – Application of pre-emergent herbicide on OCSW peninsula to maintain tern and plover nesting habitat. Control in-channel vegetation to maintain suitable unobstructed view widths for whooping cranes.
- * *Broad-Scale Recharge Water Supply and Whooping Crane Habitat Project* – Operation of the broad-scale recharge project will occur in 2021 with targeted fills during the fall and spring whooping crane migrations, and during other times of excess flows in the Platte River.
- * *Management of grassland/wet meadow habitat for whooping cranes and sandhill cranes* – Grazing will continue on Lloyd Island for the 2020 grazing season. Wet meadow areas in Section 16 T8N R19W (Tracts 2008002 and 2010001) will not be grazed/hayed during the 2020 due to Broad -Scale Recharge Water Supply and Whooping Crane Habitat Project construction. Grazing/haying management will resume as soon as project is complete.
- * **Protecting Other Species of Concern** – Identify presence of and determine methods to protect other species of concern during implementation of land-related activities.

Operations and Maintenance Priorities

- * **Basic Property Maintenance Obligations and Needs** – Fulfill basic property ownership obligations and needs on Tracts 2008002, 2009006, and 2010001 including fence and road maintenance and noxious weed control.
- * **Agricultural Operations** – Oversight of grazing/ haying leases on Tracts 2009006 and 2010001.

NOTE: The budget section of this work plan only contains information for work items that are specific to these tracts. As such, tract-specific research and monitoring actions are presented but system-scale actions like target species and geomorphology/vegetation monitoring are not.

Priority Area: General

Item(s): *Complex Land Interest and Complex-Level Planning*

No.	Management Activities	Target Dates	Person Responsible	Cost (Estimated)	Budget Line Item
CR 1	Coordination of Program land actions with neighboring landowners	Annual	BS	N/A	N/A

Priority Area: Species Habitat

Item(s): *Improve Target Species Sand and Water Habitat*

No.	Management Activities	Target Dates	Person Responsible	Cost (Estimated)	Budget Line Item
CR 2	Tract 2008002 Pre-emergent herbicide application on plover nesting habitat and OCSW complex	4/1/21 – 4/30/21	TT, JJ	\$3,500	LP-2
CR 3	Disking if necessary to provide in-channel vegetation control -(~50 acres)	9/1/21 – 10/1/21	TT	\$12,000	LP-2

Priority Area: Species Habitat

Item(s): *Whooping Crane Grassland / Wet Meadow Habitat*

No.	Management Activities	Target Dates	Person Responsible	Cost (Estimated)	Budget Line Item
CR4	Brush, tree, cattail herbicide spraying	1/16/21-11/1/21	TT	\$15,000	LP-2
CR 5	Tract 2008002 Prescribed burn (232 ac)	3/15/21 – 5/15/21	TT	\$9,545	LP-2
CR 6	Tract 2010001 Prescribed burn (74 ac)	3/15/21 – 5/15/21	TT	\$3,044	LP-2

Item(s): Other Species of Concern

No.	Management Activities	Target Dates	Person Responsible	Cost (Estimated)	Budget Line Item
CR 7	Habitat and species surveys on properties where work will occur	As Needed	DB	N/A	N/A
CR 8	Coordination with USFWS and NGPC to identify and mitigate potential impacts associated with land activities	As Needed	DB	N/A	N/A

Priority Area: Operations and Maintenance

Item(s): *Basic Property Maintenance Obligations and Needs*

No.	Management Activities	Target Dates	Person Responsible	Cost (Estimated)	Budget Line Item
CR 9	Broadscale Recharge Project Fence	1/1/21 – 12/31/21	TT	\$111,500	LP-4
CR 10	Fence and road maintenance	1/1/21 – 12/31/22	TT, JJ	\$5,000	LP-4
CR 11	Noxious weed control	6/1/21 – 8/31/21	TT, JJ	\$12,000	LP-4
CR 12	Mowing	7/15/21 - 10/15/21	TT	\$2,000	LP-4
CR 13	Tract 2010001 Electricity	5/15/21 – 10/15/21	TT	\$1,000	LP-4

Priority Area: Operations and Maintenance**Item(s):** *Agricultural Operations*

No.	Management Activities	Target Dates	Person Responsible	Cost (Estimated)	Budget Line Item
CR 14	Tract 2009006 grazing lease oversight	5/15/21 – 10/15/21	TT	N/A	N/A
CR 15	Tract 2010001 grazing lease oversight	5/15/21 – 10/15/21	TT	N/A	N/A
CR 16	Tract 2010001 haying lease oversight	5/15/21 – 10/15/21	TT	N/A	N/A
CR 17	Tract 20008002 grazing & haying lease planning & oversight	5/15/21 – 10/15/21	TT,JJ	N/A	N/A

2021 Cottonwood Ranch Complex Budget Summary

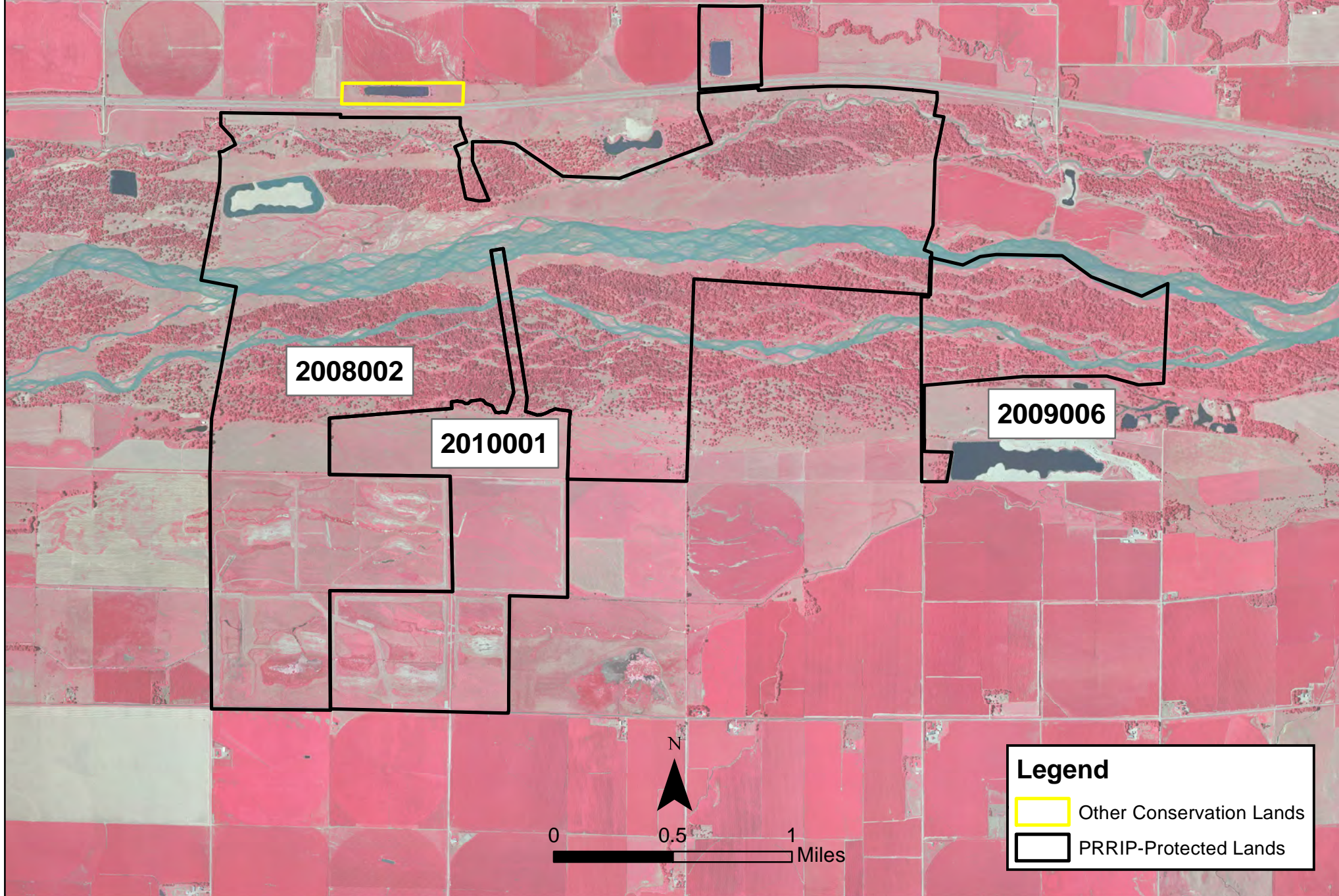
Estimated 2021 Expenditures by Program Budget Line Item

Priority Area	Item	Budget Line Item	Estimated Expenditure
Species Habitat	Target Species Sand and Water Habitat	LP-2	\$15,500
Species Habitat	Whooping Crane Wet Meadow/ Grassland Habitat	LP-2	\$27,589
Subtotal			\$43,089
Operations and Maintenance	Property Maintenance and Agricultural Operations	LP-4	\$131,500
Total			\$174,589

Estimated 2021 Revenues

Tract	Item	Estimated Income
Tract 2009006	Grazing Income	\$2,000
Tract 2010001	Grazing Income	\$5,775
Tract 2010001 SE 1/4	Grazing Income	\$3,360
Tract 2010001	Haying Income	\$3,000
Total		\$14,135

COTTONWOOD RANCH COMPLEX



2021 Elm Creek Complex Annual Work Plan

General Priorities

- * **Good Neighbor Policy** – Conduct all actions in accordance with Program's good neighbor policy.

Adaptive Management Priorities

- * **Species Monitoring** – Monitor whooping crane use of in-channel roosting habitat and least tern and piping plover use and productivity at off-channel sand and water nesting sites.

Species Habitat Priorities

- * **Maintain Target Species Sand and Water Habitat** – Control in-channel vegetation to maintain suitable unobstructed view widths for whooping cranes.
- * **Protecting Other Species of Concern** – Identify presence of and determine methods to protect other species of concern during implementation of land-related activities.

Operations and Maintenance Priorities

- * **Basic Property Maintenance Obligations and Needs** – Fulfill basic property ownership obligations and needs on Tracts 2009002, 2009005, 2012001 and 2012002 including fence and road maintenance and noxious weed control.
- * **Agricultural Operations** – Oversight of grazing/ haying leases on Tracts 2009005, 2012001 and 2012002.

NOTE: The budget section of this work plan only contains information for work items that are specific to these tracts. As such, tract-specific research and monitoring actions are presented but system-scale actions like target species and geomorphology/vegetation monitoring are not.

Priority Area: General**Item(s):** *Complex Land Interest and Complex-Level Planning*

No.	Management Activities	Target Dates	Person Responsible	Cost (Estimated)	Budget Line Item
EC 1	Coordination of Program land actions with neighboring landowners	Annual	BS	N/A	N/A

Priority Area: Species Habitat**Item(s):** *Improve Target Species Sand and Water Habitat*

No.	Management Activities	Target Dates	Person Responsible	Cost (Estimated)	Budget Line Item
EC 2	In-channel cross disking (below diversion) and overbank mowing to maintain active channel and unobstructed view widths (50 acres)	9/1/21 – 10/1/21	TT	\$12,000	LP-2

Priority Area: Species Habitat**Item(s):** *Whooping Crane Grassland / Wet Meadow Habitat*

No.	Management Activities	Target Dates	Person Responsible	Cost (Estimated)	Budget Line Item
EC 3	Tract 2009002 Prescribed burn (35 ac)	3/15/21 – 5/15/21	TT	\$1,440	LP-2
EC 4	Tract 2012002 Prescribed burn (143 ac)	3/15/21 – 5/15/21	TT	\$5,883	LP-2

Priority Area: Species Habitat
Item(s): Other Species of Concern

No.	Management Activities	Target Dates	Person Responsible	Cost (Estimated)	Budget Line Item
EC 5	Habitat and species surveys on properties where work will occur	As Needed	MH	N/A	N/A
EC 6	Coordination with USFWS and NGPC to identify and mitigate potential impacts associated with land activities	As Needed	MH	N/A	N/A

Priority Area: Operations and Maintenance
Item(s): Basic Property Maintenance Obligations and Needs

No.	Management Activities	Target Dates	Person Responsible	Cost (Estimated)	Budget Line Item
EC7	Tract 2009002 building utilities and maintenance	1/1/21 – 12/31/21	TT	\$2,500	LP-4
EC 8	Fence and road maintenance	4/1/21 – 10/1/21	TT	\$2,000	LP-4
EC 9	Mowing	7/15/21 - 10/15/21	TT	\$3,000	LP-4
EC 10	Noxious weed control	6/1/21 – 8/31/21	TT	\$10,000	LP-4

Priority Area: Operations and Maintenance
Item(s): Agricultural Operations

No.	Management Activities	Target Dates	Person Responsible	Cost (Estimated)	Budget Line Item
EC 11	Tract 2009002 Crop oversight	5/15/21 – 10/15/21	TT	N/A	N/A
EC 12	Tract 2009005 grazing lease oversight	5/15/21 – 10/15/21	TT	N/A	N/A
EC 13	Tract 2012001 haying lease oversight	5/15/21 – 10/15/21	TT	N/A	N/A
EC 14	Tract 2012002 grazing lease oversight	5/15/21 – 10/15/21	TT	N/A	N/A

2021 Elm Creek Complex Budget Summary

Estimated 2021 Expenditures by Program Budget Line Item

Priority Area	Item	Budget Line Item	Estimated Expenditure
Species Habitat	Target Species Sand and Water Habitat	LP-2	\$12,000
Species Habitat	Whooping Crane Wet Meadow/ Grassland Habitat	LP-2	\$7,323
Subtotal			\$19,323
Operations and Maintenance	Property Maintenance and Agricultural Operations	LP-4	\$17,500
Total			\$36,823

Estimated 2021 Revenues

Tract	Item	Estimated Income
Tract 2009002	Crop Income	\$4,350
Tract 2009005	Grazing Income	\$3,500
Tract 2012001	Haying Income	\$2,000
Tract 2012002	Grazing Income	\$8,100
Total		\$17,950

ELM CREEK COMPLEX

Mgmt06

2009002

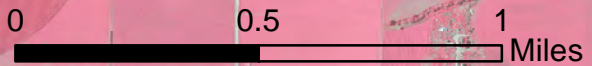
2015003

2012001



Mgmt01

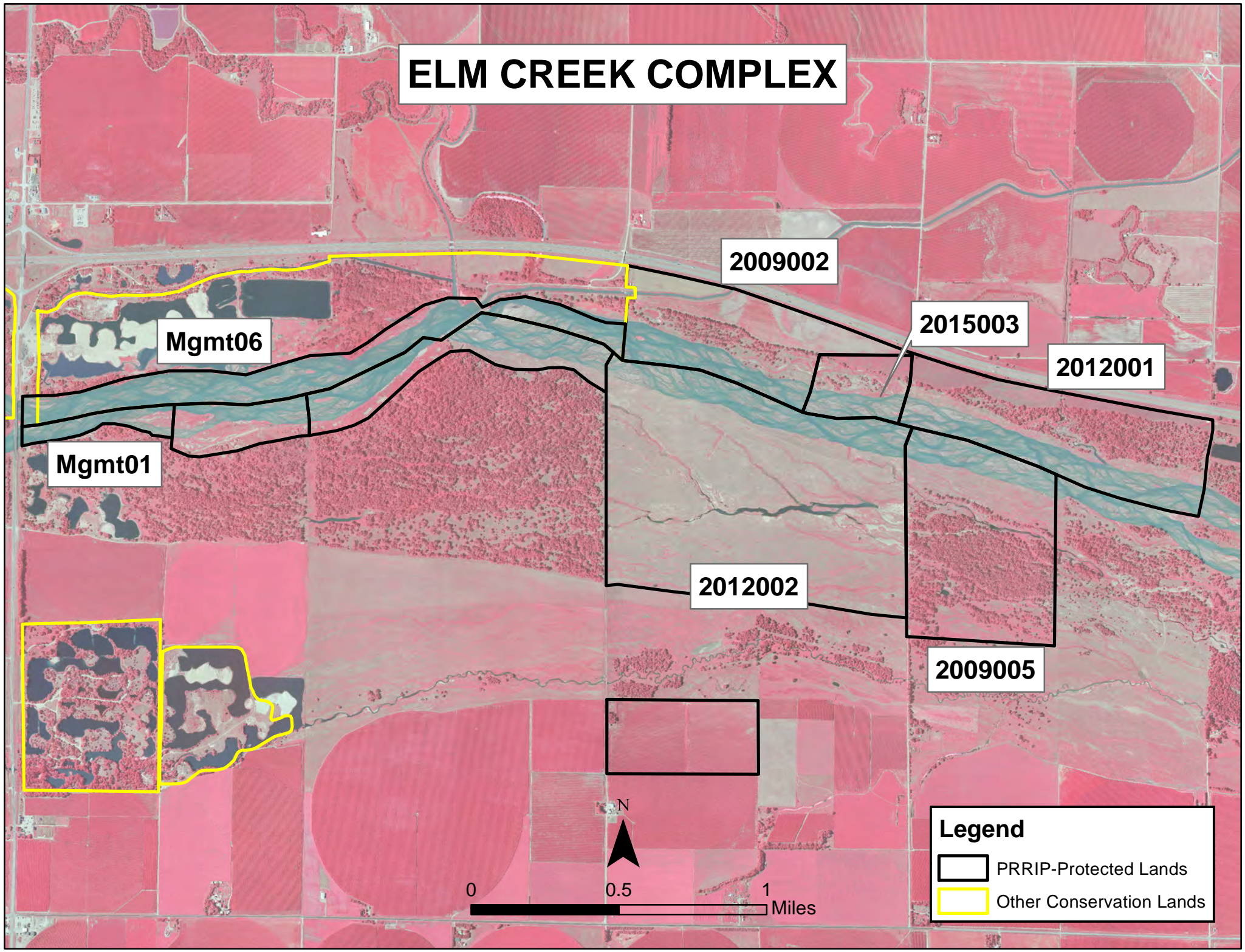
2012002

2009005



Legend

-  PRRIP-Protected Lands
-  Other Conservation Lands



2021 Pawnee Complex Annual Work Plan

General Priorities

- * **Good Neighbor Policy** - Conduct all actions in accordance with Program's good neighbor policy.

Adaptive Management Priorities

- * **Species Monitoring** – Monitor whooping crane use of in-channel roosting habitat.

Species Habitat Priorities

- * **Maintain Target Species Sand and Water Habitat** – Control in-channel vegetation to maintain suitable unobstructed view widths for whooping cranes. Remove vegetation from overbank areas adjacent to the channel to promote channel widening through lateral erosion.
- * **Protecting Other Species of Concern** – Identify presence of and determine methods to protect other species of concern during implementation of land-related activities.

Operations and Maintenance Priorities

- * **Basic Property Maintenance Obligations and Needs** – Fulfill basic property ownership obligations and needs on Tracts 2014002 and 2015002.
- * **Agricultural Operations** – Oversight of grazing/ haying leases on Tracts 2014002 and 2015002.

NOTE: The budget section of this work plan only contains information for work items that are specific to these tracts. As such, tract-specific research and monitoring actions are presented but system-scale actions like target species and geomorphology/vegetation monitoring are not.

Priority Area: General**Item(s):** *Complex Land Interest and Good Neighbor Policy*

No.	Management Activities	Target Dates	Person Responsible	Cost (Estimated)	Budget Line Item
PAW 1	Coordination of Program land actions with neighboring landowners	Annual	BS	N/A	N/A

Priority Area: Adaptive Management & Target Species Habitat**Item(s):** *Tern, Plover and Whooping Crane Riverine Habitat Experiments*

No.	Management Activities	Target Dates	Person Responsible	Cost (Estimated)	Budget Line Item
PAW 2	Herbicide treatment on south bank to kill vegetation prior to disking	4/15/21 – 5/15/21	TT	\$5,000	LP-2
PAW 3	In-channel cross disking and overbank mowing to maintain active channel and unobstructed view widths (100 ac)	4/15/21 – 5/15/21 & 9/1/21 – 10/1/21	TT	\$22,500	LP-2

Priority Area: Species Habitat**Item(s):** *Whooping Crane Grassland / Wet Meadow Habitat*

No.	Management Activities	Target Dates	Person Responsible	Cost (Estimated)	Budget Line Item
PAW 4	Tract 2014002 Prescribed burn (42 ac)	3/15/21 – 5/15/21	TT	\$1,728	LP-2
PAW 5	Tract 2015002 Prescribed burn (8 ac)	3/15/21 – 5/15/21	TT	\$329	LP-2

\$2,057

Priority Area: Species Habitat

Item(s): *Other Species of Concern*

No.	Management Activities	Target Dates	Person Responsible	Cost (Estimated)	Budget Line Item
PAW 6	Habitat and species surveys on properties where work will occur	As Needed	MH	N/A	N/A
PAW 7	Coordination with USFWS and NGPC to identify and mitigate potential impacts associated with land activities	As Needed	MH	N/A	N/A

Priority Area: Operations and Maintenance

Item(s): *Basic Property Maintenance Obligations and Needs*

No.	Management Activities	Target Dates	Person Responsible	Cost (Estimated)	Budget Line Item
PAW 8	Noxious weed control - (~675 acres)	6/1/21 – 8/31/21	TT	\$2,500	LP-4
PAW 9	Fence and road maintenance	4/1/21 – 10/1/21	TT	\$2,000	LP-4
PAW 10	NE Forest Service Cost share Pilot Fuel Reduction Project	7/15/21 – 2/1/22	TT	\$25,000	LP-4

Priority Area: Operations and Maintenance

Item(s): *Agricultural Operations*

No.	Management Activities	Target Dates	Person Responsible	Cost (Estimated)	Budget Line Item
PAW 11	Tract 2014002 oversight	5/15/21 – 10/15/21	TT	N/A	N/A
PAW 12	Tract 2015002 oversight	5/15/21 – 10/15/21	TT	N/A	N/A

2021 Pawnee Complex Budget Summary

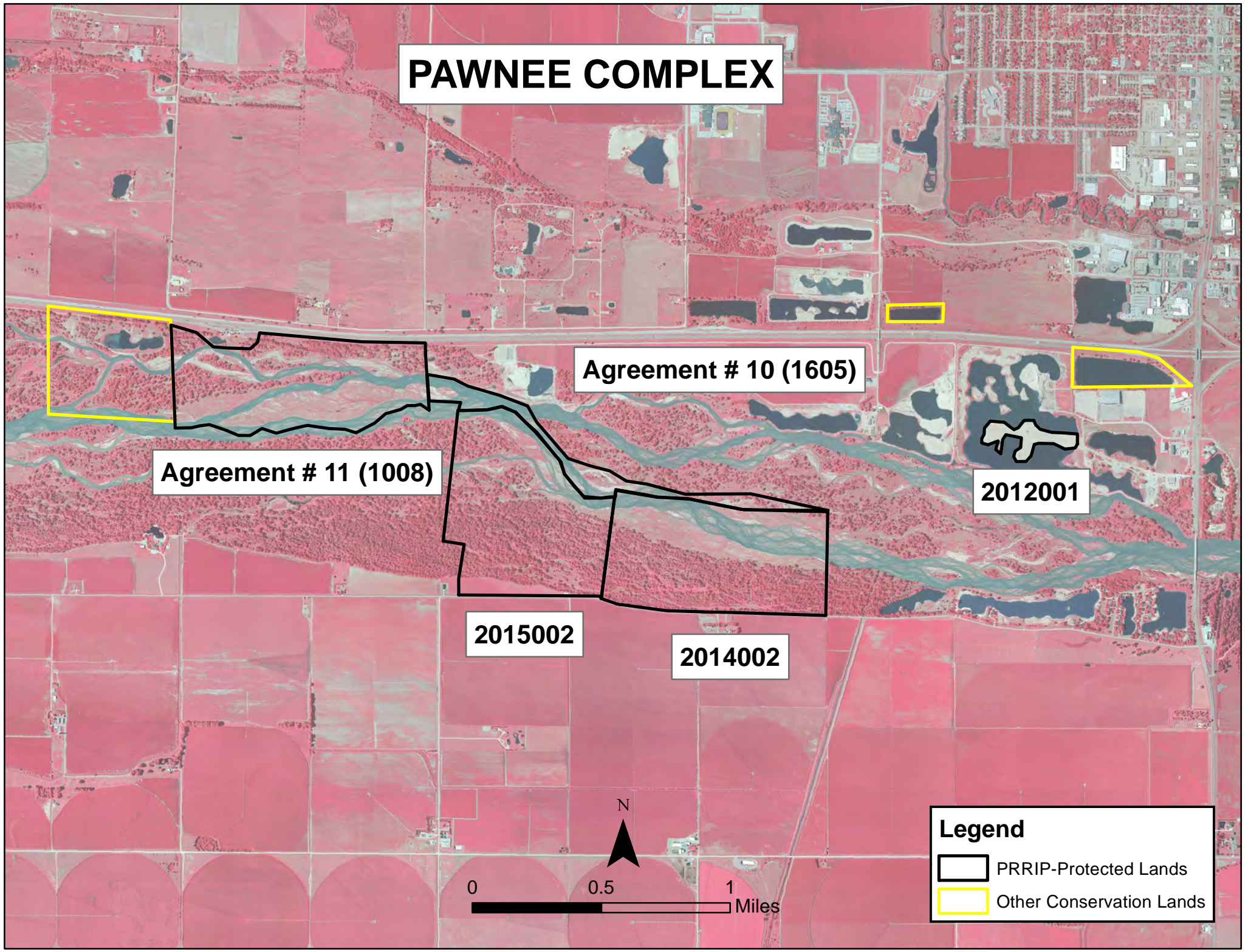
Estimated 2021 Expenditures by Program Budget Line Item

Priority Area	Item	Budget Line Item	Estimated Expenditure
Adaptive Management & Species Habitat	Target Species Sand and Water Habitat	LP-2	\$27,500
Species Habitat	Whooping Crane Grassland / Wet Meadow Habitat	LP-2	\$2,057
		Subtotal	\$29,557
Operations and Maintenance	Property Maintenance and Agricultural Operations	LP-4	\$29,500
		Total	\$59,057

Estimated 2021 Revenues

Tract	Item	Estimated Income
Tract 2015002	Crop Income	\$585
Tract 2015002	Grazing Income	\$0
Tract 2014002	Grazing Income	\$0
Total		\$585

PAWNEE COMPLEX



Agreement # 10 (1605)

Agreement # 11 (1008)

2012001

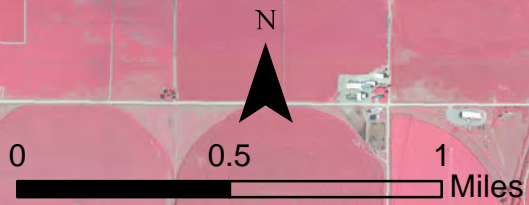
2015002

2014002

Legend

PRRIP-Protected Lands

Other Conservation Lands



2021 Fort Kearny Complex Annual Work Plan

General Priorities

- * **Good Neighbor Policy** - Conduct all actions in accordance with Program's good neighbor policy.

Adaptive Management Priorities

- * **Species Monitoring** – Monitor whooping crane use of off-channel palustrine wetlands and in-channel roosting habitat.

Species Habitat Priorities

- * **Maintain Target Species Sand and Water Habitat** – Control in-channel vegetation to maintain suitable unobstructed view widths for whooping cranes. Remove vegetation from overbank areas adjacent to the channel to promote channel widening through lateral erosion.
- * **Protecting Other Species of Concern** – Identify presence of and determine methods to protect other species of concern during implementation of land-related activities.

Operations and Maintenance Priorities

- * **Basic Property Maintenance Obligations and Needs** – Fulfill basic property ownership obligations and needs on Tracts 2008001, 2009001, 2009004, 2010003, 2012003 and 2015001 including fence and road maintenance and noxious weed control.
- * **Agricultural Operations** – Oversight of grazing/haying leases on Tracts 2008001, 2012003, 2009001, 2009004, and 2015001.

NOTE: The budget section of this work plan only contains information for work items that are specific to these tracts. As such, tract-specific research and monitoring actions are presented but system-scale actions like target species and geomorphology/vegetation monitoring are not.

Priority Area: General**Item(s):** *Complex Land Interest and Good Neighbor Policy*

No.	Management Activities	Target Dates	Person Responsible	Cost (Estimated)	Budget Line Item
FK 1	Coordination of Program land actions with neighboring landowners	Annual	BS	N/A	N/A

Priority Area: Species Habitat**Item(s):** *Improve Target Species Sand and Water Habitat*

No.	Management Activities	Target Dates	Person Responsible	Cost (Estimated)	Budget Line Item
FK 2	Disking if necessary to provide in-channel vegetation control (~83 ac)	9/1/21 – 10/1/21	TT	\$18,500	LP-2
FK 3	Clear IIsand upstream of Hike/Bike Bridge on Main Channel (12.5 ac)	7/15/21 – 2/1/22	TT	\$15,000	LP-2

Priority Area: Species Habitat**Item(s):** *Whooping Crane Grassland / Wet Meadow Habitat*

No.	Management Activities	Target Dates	Person Responsible	Cost (Estimated)	Budget Line Item
FK 4	Tract 2009001 Annual electrical service fee at irrigation well to supplement water to wetland	3/1/21 - 4/15/21 & 10/1/21-11/15/21	TT	\$5,400	LP-2
FK 5	Tract 2009004- Prescribe burn (225 ac)	3/15/21 – 5/15/21	TT	\$9,257	LP-2
FK 6	Tract 2015001 NE unit Prescribe burn (55 ac)	3/15/21 – 5/15/21	TT	\$2,263	LP-2

Priority Area: Species Habitat**Item(s):** *Other Species of Concern*

No.	Management Activities	Target Dates	Person Responsible	Cost (Estimated)	Budget Line Item
FK 7	Habitat and species surveys on properties where work will occur	As Needed	MH	N/A	N/A
FK 8	Coordination with USFWS and NGPC to identify and mitigate potential impacts associated with land activities	As Needed	MH	N/A	N/A

Priority Area: Operations and Maintenance**Item(s):** *Basic Property Maintenance Obligations and Needs*

No.	Management Activities	Target Dates	Person Responsible	Cost (Estimated)	Budget Line Item
FK 9	Tract 2009004 & 2015001 Electricity	1/1/21 – 12/31/21	TT	\$650	LP-4
FK 10	Noxious weed control	6/1/21 – 8/31/21	TT	\$10,000	LP-4
FK 11	Fence and road maintenance	4/1/21 – 10/1/21	TT	\$4,500	LP-4
FK 12	Mowing	7/15/21-10/15/21	TT	\$1,000	LP-4

Item(s): *Agricultural Operations*

No.	Management Activities	Target Dates	Person Responsible	Cost (Estimated)	Budget Line Item
FK 13	Tract 2008001 grazing lease oversight	5/15/21 – 10/15/21	TT	N/A	N/A
FK 14	Tract 2012003 grazing lease oversight	5/15/21 – 10/15/21	TT	N/A	N/A
FK 15	Tract 2015001 grazing lease oversight	5/15/21 – 10/15/21	TT	N/A	N/A

2021 Ft Kearny Complex Budget Summary

Estimated 2021 Expenditures by Program Budget Line Item

Priority Area	Item	Budget Line Item	Estimated Expenditure
Species Habitat	Improve Sand and Water Habitat	LP-2	\$33,500
Species Habitat	Whooping Crane Wet Meadow/ Grassland Habitat	LP-2	\$16,920
Subtotal			\$50,420
Operations and Maintenance	Property Maintenance and Agricultural Operations	LP-4	\$16,150
Total			\$66,570

Estimated 2021 Revenues

Tract	Item	Estimated Income
Tract 2008001 N & 2012003	Grazing Income	\$5,250
Tract 2008001 S	Haying Income	\$7,000
Tract 2009001	Grazing Income	\$0
Tract 2009004	Grazing Income	\$11,825
Tract 2012003	Cropland Income	\$1,800
Tract 2015001	Grazing Income	\$11,825
Total		\$37,700

FORT KEARNY COMPLEX

2012003

2009001

2009004

2015001



2010003

2008001



0 0.5 1 Miles

Legend

-  PRRIP-Protected Lands
-  Other Conservation Lands

2021 Minden – Gibbon Management Agreement Annual Work Plan

Adaptive Management Priorities

- * **Species Monitoring** – Monitor whooping crane use of in-channel roosting habitat.

Species Habitat Priorities

- * **Maintain Target Species Sand and Water Habitat** – Control in-channel vegetation to maintain suitable unobstructed view widths for whooping cranes.

Priority Area: Species Habitat

Item(s): *Improve Target Species Sand and Water Habitat*

No.	Management Activities	Target Dates	Person Responsible	Cost (Estimated)	Budget Line Item
M-G 1	Disking if necessary to provide in-channel vegetation control (~80 ac)	9/1/21 – 10/1/21	TT	\$16,500	LP-2
M-G 2	Brush, tree, cattail herbicide spraying	9/1/21 – 10/30/21	TT	\$6,000	LP-2

2021 Minden-Gibbon Management Agreement Budget Summary

Estimated 2021 Expenditures by Program Budget Line Item

Priority Area	Item	Budget Line Item	Estimated Expenditure
Species Habitat	Improve Target Species Sand and Water Habitat	LP-2	\$22,500
		Total	\$22,500

MINDEN - GIBBON MANAGEMENT AGREEMENT



2009008

09 Rowe



0 0.5 1 Miles

Legend

-  PRRIP-Protected Lands
-  Other Conservation Lands

2021 Clark Island Complex Annual Work Plan

General Priorities

- * **Complex Land Interest** - Execute management agreements with conservation and private landowners that will allow the Program to implement necessary construction, maintenance and research/monitoring activities.
- * **Good Neighbor Policy** - Conduct all actions in accordance with Program's good neighbor policy.

Adaptive Management Priorities

- * **Whooping Crane Riverine Habitat** – Design and implement vegetation clearing to provide a range of unobstructed view widths above the Programs minimums
- * **Species Monitoring** – Monitor whooping crane use of palustrine wetlands and in-channel roosting habitat.

Species Habitat Priorities

- * **Maintain Target Species Sand and Water Habitat** – Control in-channel vegetation to maintain suitable unobstructed view widths for whooping cranes.
- * **Protecting Other Species of Concern** – Identify presence of and determine methods to protect other species of concern during implementation of land-related activities.

Operations and Maintenance Priorities

- * **Basic Property Maintenance Obligations and Needs** – Fulfill basic property ownership obligations and needs on Tract 2010004 including fence and road maintenance and noxious weed control.
- * **Agricultural Operations** – Oversight of cropland, grazing/ haying leases on Tract 2010004

NOTE: The budget section of this work plan only contains information for work items that are specific to these tracts. As such, tract-specific research and monitoring actions are presented but system-scale actions like target species and geomorphology/vegetation monitoring are not.

Priority Area: General**Item(s):** *Complex Land Interest and Complex-Level Planning*

No.	Management Activities	Target Dates	Person Responsible	Cost (Estimated)	Budget Line Item
CI 1	Execution of management agreements w/ other private landowners for in-channel research and habitat construction activities	1/1/21 – 6/30/21	BS	N/A	N/A
CI 2	Coordination of Program land actions with neighboring landowners	Annual	BS	N/A	N/A

Priority Area: Species Habitat**Item(s):** *Improve Target Species Sand and Water Habitat*

No.	Management Activities	Target Dates	Person Responsible	Cost (Estimated)	Budget Line Item
CI 3	Clear Trees & Burn, Bury on Islands of neighboring properties pending mgmt	7/15/21 – 2/1/22	JB	\$30,000	LP-2
CI 4	Disking if necessary to provide in-channel vegetation control (~90 ac)	9/1/21 – 10/1/21	TT	\$20,100	LP-2

Priority Area: Species Habitat**Item(s):** *Whooping Crane Grassland / Wet Meadow Habitat*

CI 5	Tract 2018001 Russian Olive & Tree Pile Removal	1/15/21 – 5/15/21	TT	\$15,000	LP-2
CI 6	Tract 2018001 Prescribe burn (157 ac)	3/15/21 – 5/15/21	TT	\$6,459	LP-2

Priority Area: Species Habitat
Item(s): *Other Species of Concern*

No.	Management Activities	Target Dates	Person Responsible	Cost (Estimated)	Budget Line Item
CI 7	Habitat and species surveys on properties where work will occur	As Needed	MH	N/A	N/A
CI 8	Coordination with USFWS and NGPC to identify and mitigate potential impacts associated with land activities	As Needed	MH	N/A	N/A

Priority Area: Operations and Maintenance
Item(s): *Basic Property Maintenance Obligations and Needs*

No.	Management Activities	Target Dates	Person Responsible	Cost (Estimated)	Budget Line Item
CI 9	Fence and road maintenance	1/1/21 – 12/31/21	TT	\$10,000	LP-4
CI 10	Noxious weed control	6/1/21 – 8/31/21	TT	\$2,000	LP-4
CI 11	Mowing	7/15/21- 10/15/21	TT	\$1,500	LP-4

Priority Area: Operations and Maintenance
Item(s): *Agricultural Operations*

No.	Management Activities	Target Dates	Person Responsible	Cost (Estimated)	Budget Line Item
CI 12	Tract 2018001 grazing & haying lease oversight	5/15/21 – 10/15/21	TT	N/A	N/A

2021 Clark Island Complex Budget Summary

Estimated 2021 Expenditures by Program Budget Line Item

Priority Area	Item	Budget Line Item	Estimated Expenditure
Species Habitat	Improve Target Species Sand and Water Habitat	LP-2	\$50,100
Species Habitat	Whooping Crane Wet Meadow/ Grassland Habitat	LP-2	\$21,459
Subtotal			\$71,559
Operations and Maintenance	Property Maintenance and Agricultural Operations	LP-4	\$13,500
Total			\$85,059

Estimated 2021 Revenues

Tract	Item	Estimated Income
Tract 2018001	Meadow Grazing Income	\$7,150
Tract 2018001	Accretion Grazing Income	\$6,000
Tract 2018001	Cropland Cash Rent Income	\$19,140
Total		\$32,290



CLARK ISLAND COMPLEX

2018001



0 0.5 1 Miles

Legend

-  PRRIP-Protected Lands
-  Other Conservation Lands

2021 Shoemaker Island Complex Annual Work Plan

General Priorities

- * **Good Neighbor Policy** - Conduct all actions in accordance with Program's good neighbor policy.

Adaptive Management Priorities

- * **Species Monitoring** – Monitor whooping crane use of palustrine wetlands and in-channel roosting habitat.

Species Habitat Priorities

- * **Maintain Target Species Sand and Water Habitat** – Control in-channel vegetation to maintain suitable unobstructed view widths for whooping cranes.
- * **Protecting Other Species of Concern** – Identify presence of and determine methods to protect other species of concern during implementation of land-related activities.

Operations and Maintenance Priorities

- * **Basic Property Maintenance Obligations and Needs** – Fulfill basic property ownership obligations and needs on Tract 2010004 including fence and road maintenance and noxious weed control.
- * **Agricultural Operations** – Oversight of grazing/ haying leases on Tract 2010004

NOTE: The budget section of this work plan only contains information for work items that are specific to these tracts. As such, tract-specific research and monitoring actions are presented but system-scale actions like target species and geomorphology/vegetation monitoring are not.

Priority Area: General**Item(s):** *Complex Land Interest and Complex-Level Planning*

No.	Management Activities	Target Dates	Person Responsible	Cost (Estimated)	Budget Line Item
SI 1	Coordination of Program land actions with neighboring landowners	Annual	BS	N/A	N/A

Priority Area: Species Habitat**Item(s):** *Improve Target Species Sand and Water Habitat*

No.	Management Activities	Target Dates	Person Responsible	Cost (Estimated)	Budget Line Item
SI 2	Disking if necessary to provide in-channel vegetation control (~75 ac)	9/1/21 – 10/1/21	TT	\$16,750	LP-2

Priority Area: Species Habitat**Item(s):** *Whooping Crane Grassland / Wet Meadow Habitat*

SI 3	Tract 2010004-South Meadow Prescribe burn (57 ac)	3/15/21 – 5/15/21	TT	\$2,345	LP-2
------	---	-------------------	----	---------	------

Priority Area: Species Habitat**Item(s):** *Other Species of Concern*

No.	Management Activities	Target Dates	Person Responsible	Cost (Estimated)	Budget Line Item
SI 4	Habitat and species surveys on properties where work will occur	As Needed	MH	N/A	N/A
SI 5	Coordination with USFWS and NGPC to identify and mitigate potential impacts associated with land activities	As Needed	MH	N/A	N/A

Priority Area: Operations and Maintenance

Item(s): *Basic Property Maintenance Obligations and Needs*

No.	Management Activities	Target Dates	Person Responsible	Cost (Estimated)	Budget Line Item
SI 6	Fence and road maintenance	1/1/21 – 12/31/21	TT	\$1,500	LP-4
SI 7	Noxious weed control	6/1/21– 8/31/21	TT	\$2,500	LP-4
SI 8	Mowing	7/15/21- 10/15/21	TT	\$1,500	LP-4
SI 9	Tract2010004 Electricy	5/15/21 – 10/15/21	TT	\$200	LP-4

Priority Area: Operations and Maintenance

Item(s): *Agricultural Operations*

No.	Management Activities	Target Dates	Person Responsible	Cost (Estimated)	Budget Line Item
SI 10	Tract 2010004 grazing & haying lease oversight	5/15/21 – 10/15/21	TT	N/A	N/A

2021 Shoemaker Island Complex Budget Summary

Estimated 2021 Expenditures by Program Budget Line Item

Priority Area	Item	Budget Line Item	Estimated Expenditure
Species Habitat	Improve Target Species Sand and Water Habitat	LP-2	\$16,750
Species Habitat	Whooping Crane Wet Meadow/ Grassland Habitat	LP-2	\$2,345
Subtotal			\$19,095

Operations and Maintenance	Property Maintenance and Agricultural Operations	LP-4	\$5,700
Total			\$24,795

Estimated 2021 Revenues

Tract	Item	Estimated Income
Tract 2010004	Grazing & Haying Income	\$42,595
Total		\$42,595

SHOEMAKER ISLAND COMPLEX

2010004



0 0.5 1 Miles

Legend

-  PRRIP-Protected Lands
-  Other Conservation Lands

2021 Chapman Complex Annual Work Plan

General Priorities

- * **Restoration and Management Planning** – Development of restoration and management plan for Chapman Complex.
- * **Complex Land Interest** - Execute management agreements with conservation and private landowners that will allow the Program to implement necessary construction, maintenance and research/monitoring activities.
- * **Good Neighbor Policy** - Conduct all actions in accordance with Program's good neighbor policy.

Adaptive Management Priorities

- * **Whooping Crane Riverine Habitat** – Design and implement vegetation clearing to provide a range of unobstructed view widths above the Programs minimums
- * **Species Monitoring** – Monitor whooping crane use of palustrine wetlands and in-channel roosting habitat.

Species Habitat Priorities

- * **Improve Target Species Sand and Water Habitat** – Control in-channel vegetation to maintain suitable unobstructed view widths for whooping cranes.
- * **Protecting Other Species of Concern** – Identify presence of and determine methods to protect other species of concern during implementation of land-related activities.

Operations and Maintenance Priorities

- * **Basic Property Maintenance Obligations and Needs** – Fulfill basic property ownership obligations and needs on Tracts including fence and road maintenance and noxious weed control.
- * **Agricultural Operations** – Oversight of grazing/ haying leases

NOTE: The budget section of this work plan only contains information for work items that are specific to these tracts. As such, tract-specific research and monitoring actions are presented but system-scale actions like target species and geomorphology/vegetation monitoring are not.

Priority Area: General**Item(s):** *Complex Land Interest and Complex-Level Planning*

No.	Management Activities	Target Dates	Person Responsible	Cost (Estimated)	Budget Line Item
CC 1	Restoration and Management Planning for Chapman Complex	1/1/21 - 10/1/21	TT, JB	N/A	N/A
CC 2	Execution of management agreements w/ other private landowners for in-channel research and habitat construction activities	1/1/21 – 6/30/21	BS	N/A	N/A
CC 3	Coordination of Program land actions with neighboring landowners	Annual	BS	N/A	N/A

Priority Area: Species Habitat**Item(s):** *Improve Target Species Sand and Water Habitat*

No.	Management Activities	Target Dates	Person Responsible	Cost (Estimated)	Budget Line Item
CC 4	Tract 2019001 Habitat Enhancement	7/15/21 – 1/1/22	TT	\$176,144	LP-2
CC 5	Tract 2020001 Habitat Enhancement	7/15/21 – 1/1/22	TT	\$290,700	LP-2

Priority Area: Species Habitat
Item(s): *Other Species of Concern*

No.	Management Activities	Target Dates	Person Responsible	Cost (Estimated)	Budget Line Item
CC 6	Habitat and species surveys on properties where work will occur	As Needed	MH	N/A	N/A
CC 7	Coordination with USFWS and NGPC to identify and mitigate potential impacts associated with land activities	As Needed	MH	N/A	N/A

Priority Area: Operations and Maintenance
Item(s): *Basic Property Maintenance Obligations and Needs*

No.	Management Activities	Target Dates	Person Responsible	Cost (Estimated)	Budget Line Item
CC 8	Fence and road maintenance	1/1/21 – 12/31/21	TT	\$15,000	LP-4
CC 9	Noxious weed control	6/1/21 – 8/31/21	TT	\$5,000	LP-4
CC 10	Mowing	7/15/21- 10/15/21	TT	\$1,500	LP-4

Priority Area: Operations and Maintenance
Item(s): *Agricultural Operations*

No.	Management Activities	Target Dates	Person Responsible	Cost (Estimated)	Budget Line Item
CC 11	Tract 2019001 grazing lease oversight	5/15/21 – 10/15/21	N/A	N/A	N/A

2021 Chapman Complex Budget Summary

Estimated 2021 Expenditures by Program Budget Line Item

Priority Area	Item	Budget Line Item	Estimated Expenditure
Species Habitat	Create In-channel Sand & Water Habitat	LP-2	\$466,844
			<i>\$466,844</i>
Operations and Maintenance	Property Maintenance and Agricultural Operations	LP-4	\$21,500
		<i>Total</i>	<i>\$488,344</i>

Estimated 2021 Revenues

Tract	Item	Estimated Income
2019001	Grazing lease	\$3,640
	Total	\$3,640

CHAPMAN COMPLEX

2020001

2019001

N



0

0.5

1

Miles

Legend

-  PRRIP-Protected Lands
-  Other Conservation Lands

2021 Water Properties Annual Work Plan

General Priorities

- * **Good Neighbor Policy** - Conduct all actions in accordance with Program's good neighbor policy.

Operations and Maintenance Priorities

- * **Basic Property Maintenance Obligations and Needs** – Fulfill basic property ownership obligations and needs on Tracts W2016001, W2016002, W2017001, & W2017002 including fence and road maintenance, irrigation management and noxious weed control.
- * **Agricultural Operations** – Oversight of grazing/ haying lease on Tract W2016001 and custom farming on Tract W2016002

Priority Area: General

Item(s): *Complex Land Interest and Complex-Level Planning*

No.	Management Activities	Target Dates	Person Responsible	Cost (Estimated)	Budget Line Item
WP 1	Coordination of Program land actions with neighboring landowners	Annual	BS	N/A	N/A

Priority Area: Operations and Maintenance

Item(s): *Basic Property Maintenance Obligations and Needs*

No.	Management Activities	Target Dates	Person Responsible	Cost (Estimated)	Budget Line Item
WP 2	Fence and road maintenance	1/1/21–12/31/21	TT	\$5,000	WPLW-1
WP 3	Tract W201701 Boundary Fence	1/1/21–12/31/21	TT	\$13,200	WPLW-1
WP 4	Noxious weed control	6/1/21 – 8/31/21	TT	\$10,000	WPLW-1
WP 5	Mowing	7/15/21–10/15/21	TT	\$1,000	WPLW-1
WP 6	Tracts W2016002 & W2017001 Electricity	5/15/21 – 10/15/21	TT	\$200	WPLW-1
WP 7	Taxes	5/15/21 – 10/15/21	BS	\$9,000	WPLW-1

Priority Area: Operations and Maintenance

Item(s): *Agricultural Operations*

No.	Management Activities	Target Dates	Person Responsible	Cost (Estimated)	Budget Line Item
WP 8	TractW 2016002 Lease Oversight	5/15/21 – 10/15/21	TT	N/A	WPLW-1

2021 Water Properties Budget Summary

Estimated 2021 Expenditures by Program Budget Line Item

Priority Area	Item	Budget Line Item	Estimated Expenditure
Operations and Maintenance	Property Maintenance and Agricultural Operations	WPLW-1	\$38,400
		Total	\$38,400

Estimated 2020 Revenues

Tract	Item	Estimated Income
Tract W201602	Crop Income	\$9,000
Tract W201701	N/A	\$0
Tract W201702	N/A	\$0
	Total	\$9,000

W201701

WATER PROPERTIES

Dawson County

W201703

Phelps County

W201602

Buffalo County

W201702

Lincoln County