

2019 Land Budget Overview

Platte River Recovery Implementation Program

For More Information Contact: Jason Farnsworth, farnsworthj@headwaterscorp.com (308) 237-5728

2019 Land Budget Overview By Budget Line Item

Budget Line Item	Description	Estimated Expenditure****
LP-2	Adaptive Management Species Habitat Actions*	\$2,168,452
LP-3	New Land Acquisitions	\$2,600,000
LP-4	Property Maintenance & Agricultural Operations**	\$195,200
LP-6	Land Plan Special Advisors	\$20,000
LP-7	Public Access Management	\$50,000
WP-4 (j)	Property Maintenance for Water Properties***	\$62,000

* Includes \$50,000 in LP-2 for new acquisitions in 2019.

** Includes \$50,000 in LP-4 for new acquisitions in 2019.

*** Includes \$15,000 in WP-4 (j) for new acquisitions in 2019.

**** The budget items have not been reviewed by the LAC and may be revised subsequent to LAC approval of land budget items.

2019 Budget Overview By Complex

Complex	Estimated Expenditure	Estimated Income
Non-Complex Tracts	\$52,375	\$53,900
Plum Creek "Complex"	\$48,360	\$6,050
Cottonwood Ranch Complex	\$72,470	\$4,500
Elm Creek Complex	\$54,560	\$14,850
Pawnee Complex	\$40,800	\$5,190
Fort Kearny Complex	\$69,017	\$36,900
Minden-Gibbon Complex	\$20,295	\$0
Clark Island Complex	\$1,856,000	\$30,270
Shoemaker Island Complex	\$49,775	\$47,035
Water Properties	\$47,000	\$5,760
New Acquisitions (Estimated 4)*	\$115,000	\$0
Total	\$2,425,652	\$204,455

* \$50K for maintenance, \$50K for species habitat & \$15K for water land maintenance

2019 Budget Priority Areas by Budget Line Item

LP-2 – Adaptive Management Species Habitat Actions: Species habitat priorities for 2019 are focused on creation and maintenance of suitable complex and non-complex habitat for Program target species.

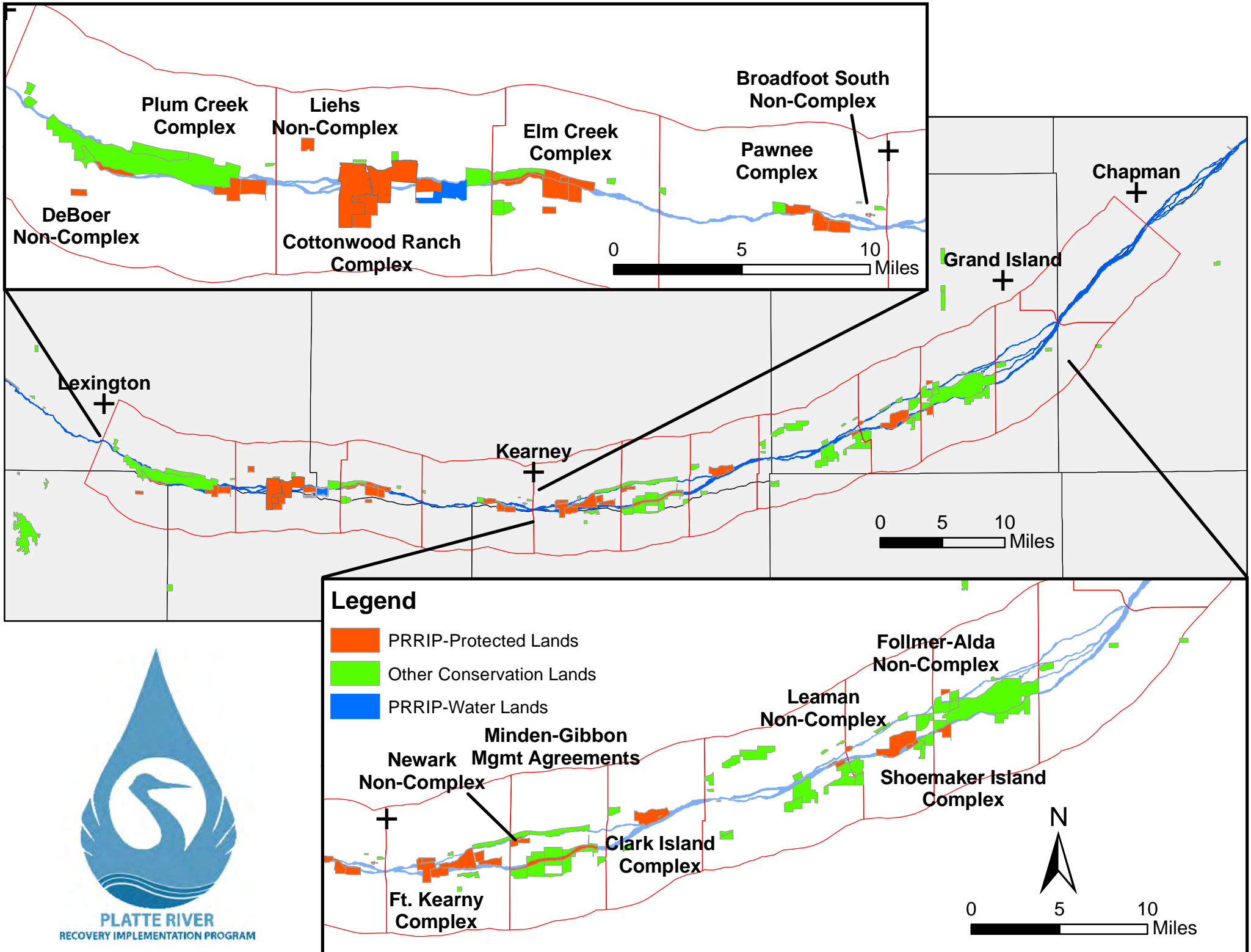
LP-3 – New Land Acquisitions: 2019 land acquisition priorities include identification and acquisition of lands for construction of an additional 60 acres of off-channel sand and water habitat for the least tern and piping plover and identification and acquisition of lands that could count towards the First Increment Extension habitat land "plus up" of 1,500 acres.

LP-4 – Property Maintenance & Agricultural Operations: 2019 priorities include maintenance of basic land infrastructure such as facilities, roads, and fences as well as fulfilling basic ownership obligations like noxious weed control and ROW mowing.

LP-6 – Land Plan Special Advisors: Priorities for special advisors include administration of agricultural leases and associated FSA obligations, crop management and marketing, and assistance in cropland conversions.

LP-7 – Public Access Management: Nebraska Game and Parks Commission will manage public access to Program lands in 2019.

WP-4 (j) – Property Maintenance for Water Properties: 2019 priorities include maintenance of basic land infrastructure such as facilities, roads, and fences as well as fulfilling basic ownership obligations like noxious weed control and ROW mowing.



2019 Non-Complex Properties Annual Work Plan

Platte River Recovery Implementation Program

For More Information Contact: Jason Farnsworth, farnsworthj@headwaterscorp.com (308) 237-5728

General Priorities

- * **Good Neighbor Policy** - *Conduct all actions in accordance with Program's good neighbor policy.*

Adaptive Management Priorities

- * **Species Monitoring** – Monitor whooping crane use of non-complex palustrine wetlands and least tern and piping plover use and productivity at off-channel sand and water nesting sites.

Species Habitat Priorities

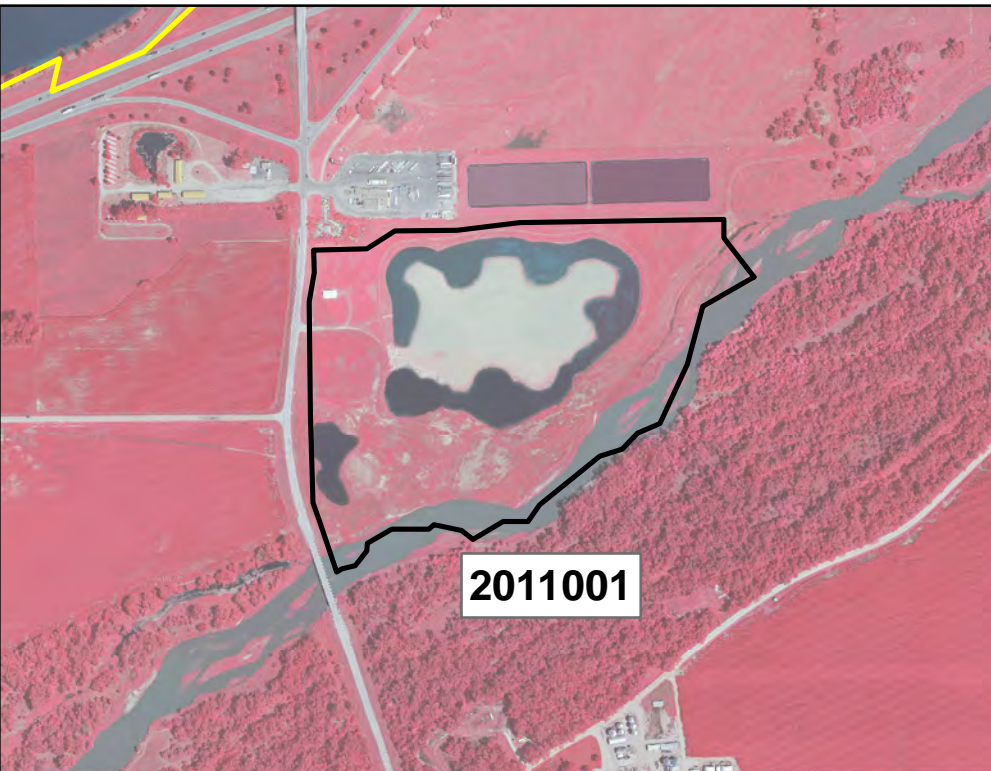
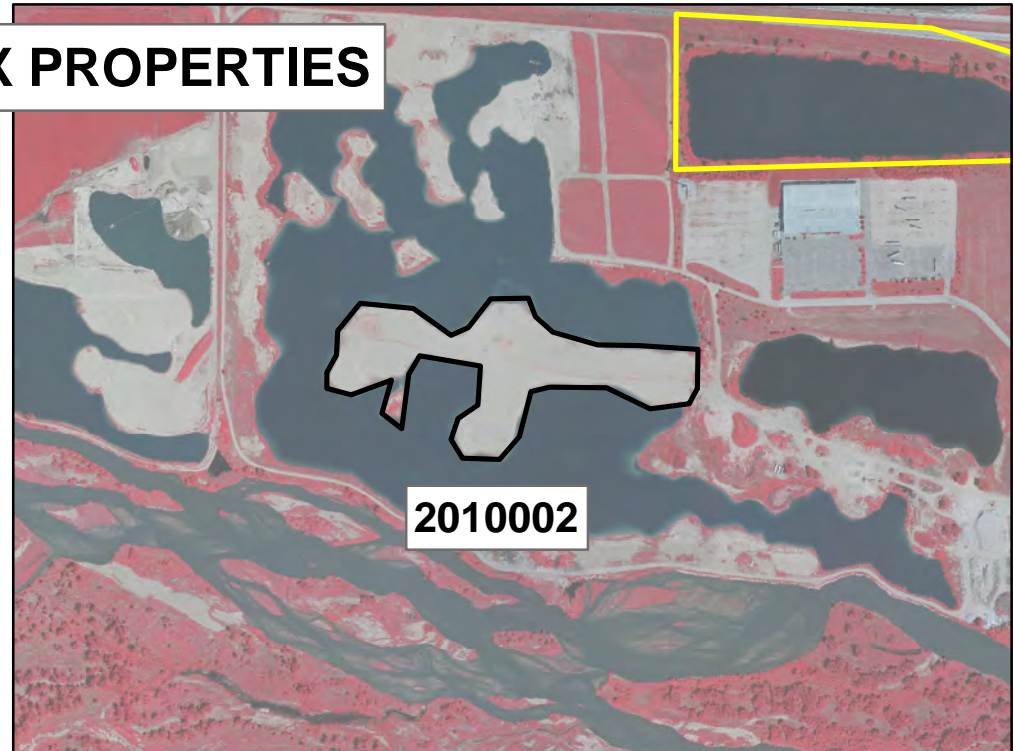
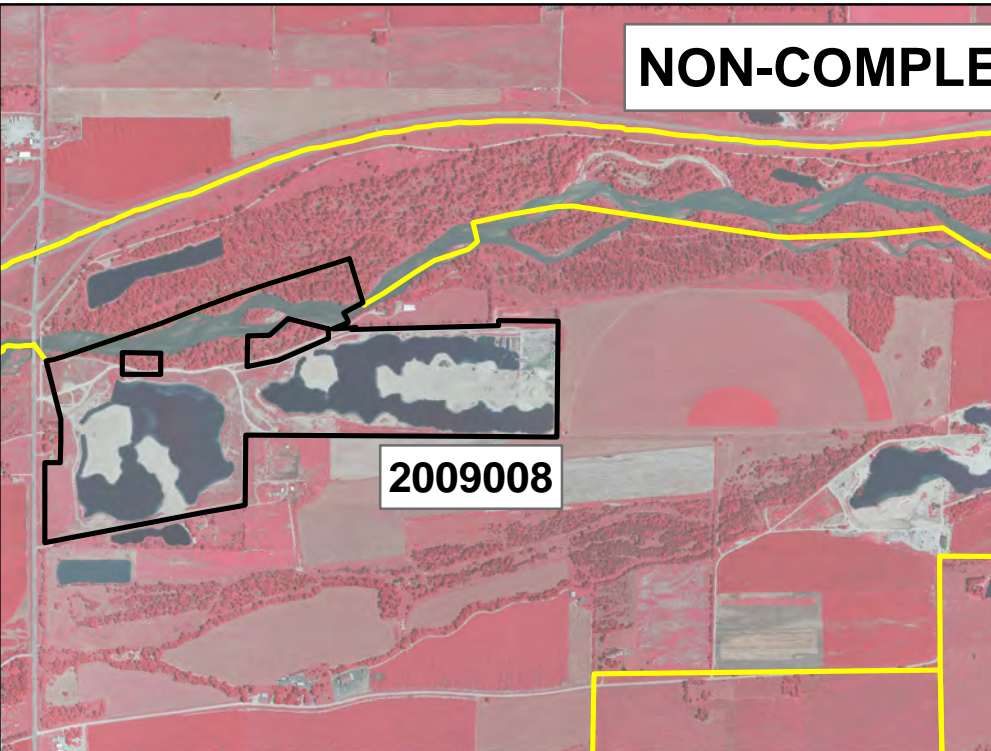
- * **Maintain Suitable Off-Channel Sand and Water Nesting Habitat** – Apply pre-emergent herbicide on Tracts 2009008, 2010002, 2011001, and 2011002 OCSW nesting habitat to prevent vegetation encroachment into nesting areas.
- * **Maintain Suitable Palustrine Wetland Roosting Habitat** – Manage vegetation height in the palustrine wetland areas of Tracts 2012004 and 2013001 to maintain suitable unobstructed view widths for whooping crane roosting.
- * **Protecting Other Species of Concern** – Identify presence of and determine methods to protect other species of concern during implementation of land-related activities.

Operations and Maintenance Priorities

- * **Basic Property Maintenance Obligations and Needs** – Fulfill basic property ownership obligations and needs including boundary fence signage, road maintenance, and noxious weed control.
- * **Agricultural Operations** – Oversight of crop leases on Tracts 2009008, 2012004 and 2013001 and hay lease on Tract 2011001.
- * **Sand and Gravel Mining Operations** – *Monitor sand and gravel mining operations on Tracts 2009008 and 2011002.*

NOTE: The budget section of this work plan only contains information for work items that are specific to these tracts. As such, tract-specific research and monitoring actions are presented but system-scale actions like target species and geomorphology/vegetation monitoring are not.

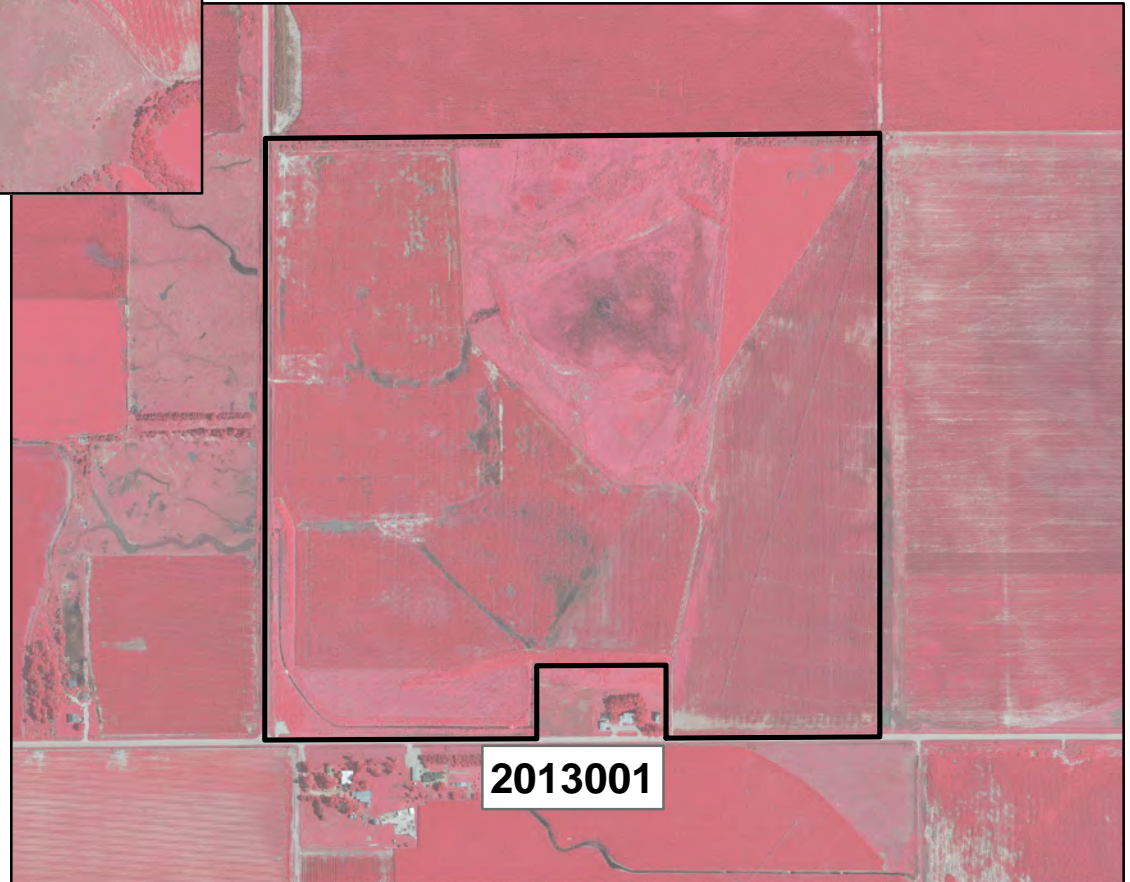
NON-COMPLEX PROPERTIES



NON-COMPLEX PROPERTIES



2012004



2013001

Legend

Conservation Lands

OWNERSHIP

 PRRIP-Protected Lands

 Other Conservation Lands

Priority Area: *General***Item(s):** *Land Interest and Tract-Level Restoration and Maintenance Planning*

No.	Management Activities	Target Dates	Person Responsible	Cost (Estimated)	Budget Line Item
NC 1	Coordination of Program land actions with neighboring landowners	Annual	BS	N/A	N/A

Priority Area: *Species Habitat***Item(s):** *Maintain Suitable In- and Off-Channel Sand & Water Habitat*

No.	Management Activities	Target Dates	Person Responsible	Cost (Estimated)	Budget Line Item
NC 2	Herbicide applications on OCSW peninsulas to maintain bare sand nesting habitat	4/2019 & 9/2019	TT	\$10,510	LP-2
NC 3	Construct 10 acres of on-channel MCA nesting habitat	1/1/19 - 4/15/19	JB	\$15,330	LP-2

Priority Area: *Species Habitat***Item(s):** *Maintain Suitable Palustrine Wetland Habitat*

No.	Management Activities	Target Dates	Person Responsible	Cost (Estimated)	Budget Line Item
NC 4	Irrigation well pumping to augment water level in wetland area of Tract 2013001	3/1/19 - 4/15/19 & 10/1/19-11/15/19	TT	\$2,235	LP-2
NC 5	Brush, tree, cattail herbicide spraying	1/16/19-11/1/19	TT	\$3,300	LP-2
NC 6	Tract 2013001 Custom Farming Expenses	5/15/19-11/15/19	TT	\$16,500	LP-2

Priority Area: *Species Habitat***Item(s):** *Other Species of Concern*

No.	Management Activities	Target Dates	Person Responsible	Cost (Estimated)	Budget Line Item
NC 7	Habitat and species surveys on properties where work will occur	As Needed	DB	N/A	N/A
NC 8	Coordination with USFWS and NGPC to identify and mitigate potential impacts associated with land activities	Annual	DB	N/A	N/A

Priority Area: Operations and Maintenance**Item(s):** *Basic Property Maintenance Obligations and Needs*

No.	Management Activities	Target Dates	Person Responsible	Cost (Estimated)	Budget Line Item
NC 9	Fence and road maintenance	Annual	TT	\$1,500	LP-4
NC 10	Noxious weed control	6/1/19 – 8/31/19	TT	\$2,000	LP-4
NC 11	Mowing	7/15/19 - 10/15/19	TT	\$1,000	LP-4

Priority Area: Operations and Maintenance**Item(s):** *Agricultural Operations*

No.	Management Activities	Target Dates	Person Responsible	Cost (Estimated)	Budget Line Item
NC 12	Oversight of grazing and cropland	Annual	TT	N/A	N/A
NC 13	Oversight of sand and gravel mining	Annual	BS	N/A	N/A

Personnel Responsibility Key

BS – Bruce Sackett (Director of Acquisitions)

DB – David Baasch (Director of Biological and Ecological Services)

JB – Justin Brei (Biosystems Engineer)

KW – Kevin Werbylo (Water Resource Engineer)

TT – Tim Tunnell (Senior Land Manager)

Property Identification Key:

2009008 - PRRIP Broadfoot Newark Tract

2010002 - Broadfoot Kearney South Tract

2011001 - PRRIP East Leaman Tract

2011002 - PRRIP Follmer Alda Tract

2012004 - PRRIP DeBore Tract

2013001 - PRRIP Liehs Tract

2019 Non-Complex Tracts Budget Summary

Estimated 2019 Expenditures by Program Budget Line Item

Priority Area	Item	Budget Line Item	Estimated Expenditure
Species Habitat	Create & Maintain Off-Channel Sand & Water Habitat	LP-2	\$10,510
Species Habitat	Create In-channel Sand & Water Habitat	LP-2	\$15,330
Species Habitat	Create & Maintain Palustrine Wetland Habitat	LP-2	\$22,035
Subtotal			\$47,875
Operations and Maintenance	Property Maintenance and Agricultural Operations	LP-4	\$4,500
Total			\$52,375

Estimated 2019 Revenues

Tract	Item	Estimated Income
Tract 2009008	Sand & Gravel Royalties	\$13,000
Tract 2009008	Hay Income	\$400
Tract 2011001	Hay Income	\$1,000
Tract 2011002	Sand & Gravel Royalties	\$5,000
Tract 2011002	Cropland Cash Rent Income	\$4,000
Tract 2012004	Cropland Cash Rent Income	\$3,000
Tract 2012004	Grazing Income	\$2,000
Tract 2013001	Cropland Cash Rent Income	\$6,500
Tract 2013001	Cropland Custom Farm Income	\$19,000
Total		\$53,900

2019 Plum Creek "Complex" Annual Work Plan

Platte River Recovery Implementation Program

For More Information Contact: Jason Farnsworth, farnsworthj@headwaterscorp.com (308) 237-5728

General Priorities

- * **Good Neighbor Policy** - Conduct all actions in accordance with Program's good neighbor policy.

Adaptive Management Priorities

- * **Implementation of full scale sediment augmentation** - Augment 40,000 cubic yards of sediment through mechanical augmentation. Augmentation will occur upstream of the Plum Creek Complex near the J-2 Return.
- * **Species Monitoring** – Monitor whooping crane use of riverine roosting habitat and least tern and piping plover use and productivity at off-channel sand and water nesting sites.

Species Habitat Priorities

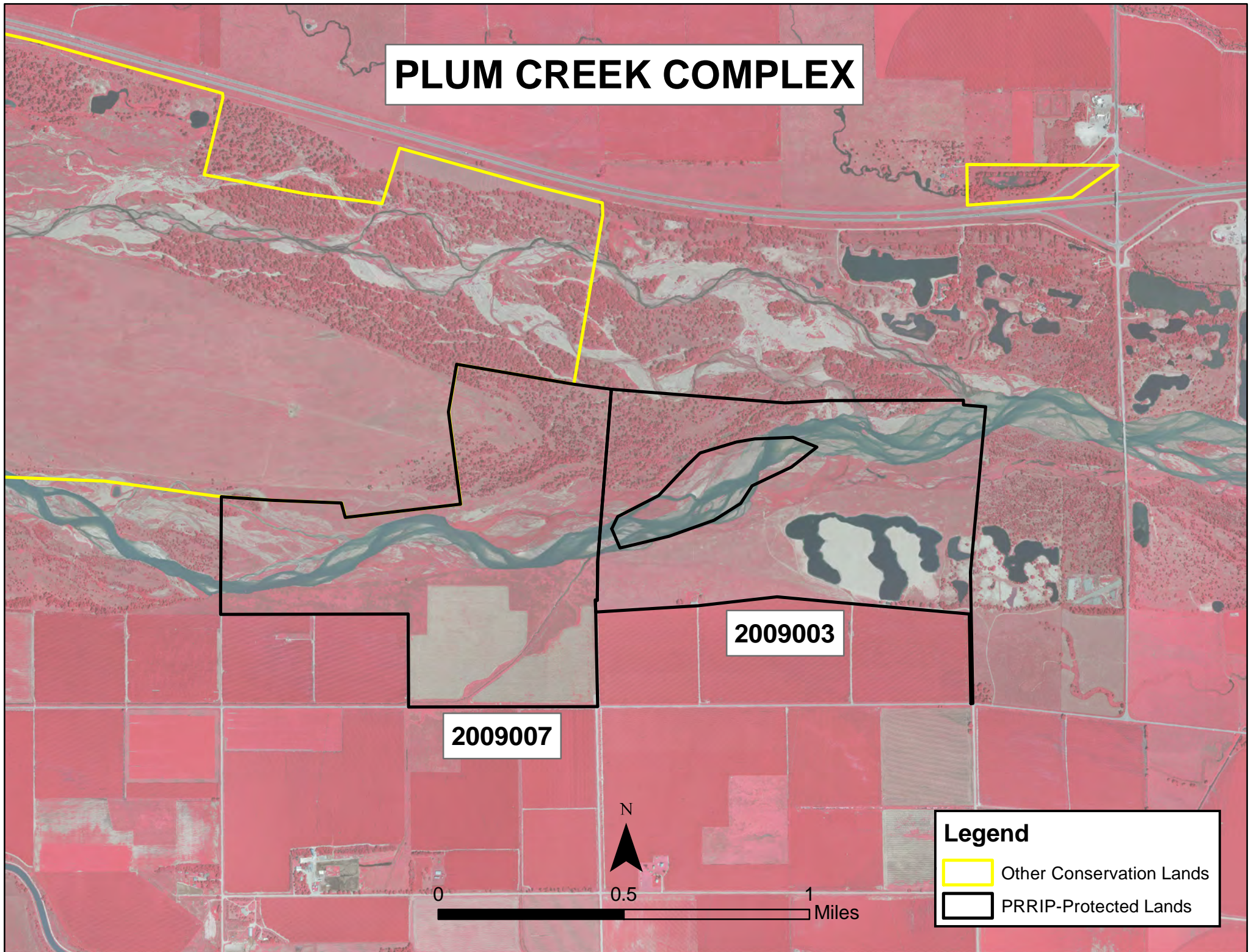
- * **Improve Target Species Sand and Water Habitat** – Application of pre-emergent herbicide on OCSW peninsulas to maintain tern and plover nesting habitat. Control in-channel vegetation to maintain suitable unobstructed view widths for whooping cranes.
- * **Protecting Other Species of Concern** – Identify presence of and determine methods to protect other species of concern during implementation of land-related activities.

Operations and Maintenance Priorities

- * **Basic Property Maintenance Obligations and Needs** – Fulfill basic property ownership obligations and needs including boundary fence signage, road maintenance, and noxious weed control.
- * **Agricultural Operations** – Oversight of grazing lease on Tract 2009003. Oversight of cropland/hay leases on Tract 2009007.

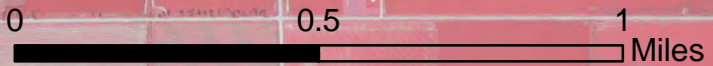
NOTE: The budget section of this work plan only contains information for work items that are specific to these tracts. As such, tract-specific research and monitoring actions are presented but system-scale actions like target species and geomorphology/vegetation monitoring are not.

PLUM CREEK COMPLEX



2009003

2009007



Legend

 Other Conservation Lands

 PRRIP-Protected Lands

Priority Area: General**Item(s):** *Complex Land Interest and Complex-Level Planning*

No.	Management Activities	Target Dates	Person Responsible	Cost (Estimated)	Budget Line Item
PC 1	Coordination of Program land actions with neighboring landowners	Annual	BS	N/A	N/A
PC 2	Coordinate with NPPD to identify and mitigate potential impacts to leased NPPD nesting islands	Annual	DB	N/A	N/A

Priority Area: Species Habitat**Item(s):** *Improve Target Species Sand and Water Habitat*

No.	Management Activities	Target Dates	Person Responsible	Cost (Estimated)	Budget Line Item
PC 3	Herbicide applications on OCSW peninsulas to maintain bare sand nesting habitat	4/19 & 9/19	TT	\$4,300	LP-2
PC 4	Disking if necessary to provide in-channel vegetation control (71 ac)	9/1/19 – 10/1/19	TT	\$19,750	LP-2

Priority Area: Species Habitat**Item(s):** *Whooping Crane Grassland / Wet Meadow Habitat*

No.	Management Activities	Target Dates	Person Responsible	Cost (Estimated)	Budget Line Item
PC 5	Tract 2009003 Prescribed burn (151 ac)	3/15/19 – 5/15/19	TT	\$6,607	LP-2
PC 6	Tract 2009007 Prescribed burn (58 ac)	3/15/19 – 5/15/19	TT	\$2,603	LP-2

Priority Area: *Species Habitat***Item(s): *Other Species of Concern***

No.	Management Activities	Target Dates	Person Responsible	Cost (Estimated)	Budget Line Item
PC 7	Habitat and species surveys on properties where work will occur	As Needed	DB	N/A	N/A
PC 8	Coordination with USFWS and NGPC to identify and mitigate potential impacts associated with land activities	1/1/19 – 4/1/19	DB	N/A	N/A

Priority Area: Operations and Maintenance**Item(s): *Basic Property Maintenance Obligations and Needs***

No.	Management Activities	Target Dates	Person Responsible	Cost (Estimated)	Budget Line Item
PC 9	Fence and road maintenance	Annual	TT	\$1,000	LP-4
PC 10	Noxious weed control	6/1/19 – 8/31/19	TT	\$6,500	LP-4
PC 11	Lodge & Quonset utilities and maintenance	Annual	TT	\$5,600	LP-4
PC 12	Mowing	7/15/19- 10/15/19	TT	\$2,000	LP-4

Priority Area: Operations and Maintenance**Item(s): *Agricultural Operations***

No.	Management Activities	Target Dates	Person Responsible	Cost (Estimated)	Budget Line Item
PC 13	Oversight of grazing and cropland leases	Annual	TT	N/A	N/A

Personnel Responsibility Key

BS – Bruce Sackett (Director of Acquisitions)

DB – David Baasch (Director of Biological and Ecological Services)

JB – Justin Brei (Biosystems Engineer)

KW – Kevin Werbylo (Water Resource Engineer)

TT – Tim Tunnell (Senior Land Manager)

Property Identification Key:

2009003 - PRRIP Dyer Tract

2009007 - PRRIP Cook Tract

2019 Plum Creek Complex Budget Summary

Estimated 2019 Expenditures by Program Budget Line Item

Priority Area	Item	Budget Line Item	Estimated Expenditure
Species Habitat	Target Species Sand and Water Habitat	LP-2	\$24,050
Species Habitat	Whooping Crane Wet Meadow/ Grassland Habitat	LP-2	\$9,210
Subtotal			\$33,260
Operations and Maintenance	Property Maintenance and Agricultural Operations	LP-4	\$15,100
Total			\$48,360

Estimated 2019 Revenues

Tract	Item	Estimated Income
Tract 2009003	NPPD Habitat Lease	\$500
Tract 2009003	Grazing Income	\$0
Tract 2009007	Haying Income	\$0
Tract 2009007	Cropland Income	\$5,550
Total		\$6,050

2019 Cottonwood Ranch Complex Annual Work Plan

Platte River Recovery Implementation Program

For More Information Contact: Jason Farnsworth, farnsworthj@headwaterscorp.com (308) 237-5728

General Priorities

- * **Good Neighbor Policy** - Conduct all actions in accordance with Program's good neighbor policy.

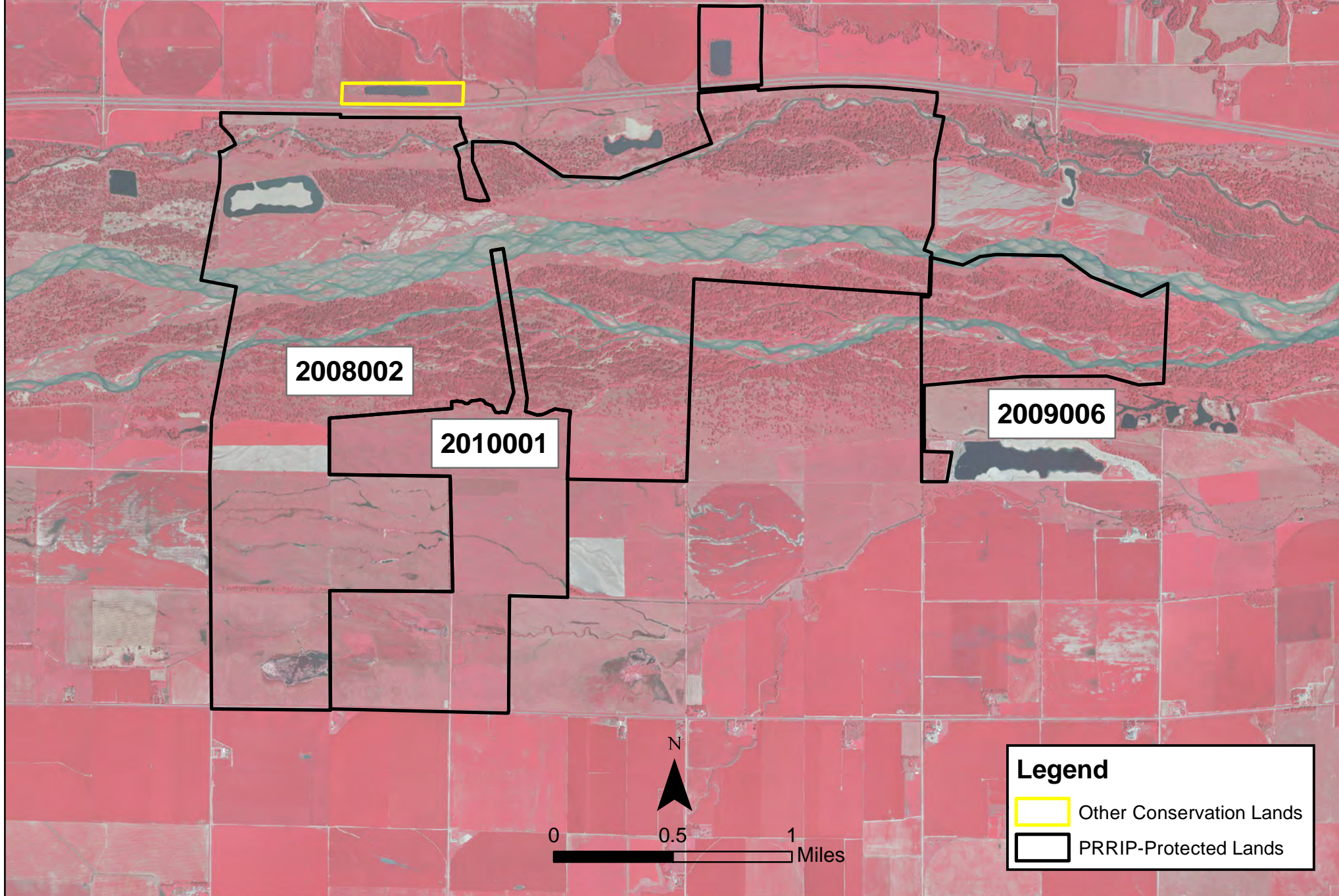
Adaptive Management Priorities

- * **Species Monitoring** – Monitor whooping crane use of riverine and off-channel palustrine wetland roosting habitat and least tern and piping plover use and productivity at off-channel sand and water nesting sites.

Species Habitat Priorities

- * **Maintain Target Species Sand and Water Habitat** – Application of pre-emergent herbicide on OCSW peninsula to maintain tern and plover nesting habitat. Control in-channel vegetation to maintain suitable unobstructed view widths for whooping cranes.
- * *Construction of Broad-Scale Recharge Water Supply and Whooping Crane Habitat Project – Construct berms and water control structures to allow for approximately 400 acres of ponded surface water in wet meadow areas south of the channel on Tracts 2008002 and 2010001. Budget for this work item is included in a Water Plan line item.*
- * *Management of grassland/wet meadow habitat for whooping cranes and sandhill cranes – Grazing will continue on Lloyd Island for the 2018 grazing season. Wet meadow areas in Section 16 T8N R19W (Tracts 2008002 and 2010001) will not be grazed/hayed during the 2019 due to Broad -Scale Recharge Water Supply and Whooping Crane Habitat Project construction. Grazing/haying management will resume as soon as project is complete.*
- * **Protecting Other Species of Concern** – Identify presence of and determine methods to protect other species of concern during implementation of land-related activities.

COTTONWOOD RANCH COMPLEX



Operations and Maintenance Priorities

- * **Basic Property Maintenance Obligations and Needs** – Fulfill basic property ownership obligations and needs on Tracts 2008002, 2009006, and 2010001 including fence and road maintenance and noxious weed control.
- * **Agricultural Operations** – Oversight of grazing/ haying leases on Tracts 2009006 and 2010001.

NOTE: The budget section of this work plan only contains information for work items that are specific to these tracts. As such, tract-specific research and monitoring actions are presented but system-scale actions like target species and geomorphology/vegetation monitoring are not.

Priority Area: General

Item(s): *Complex Land Interest and Complex-Level Planning*

No.	Management Activities	Target Dates	Person Responsible	Cost (Estimated)	Budget Line Item
CR 1	Coordination of Program land actions with neighboring landowners	Annual	BS	N/A	N/A

Priority Area: Species Habitat

Item(s): *Improve Target Species Sand and Water Habitat*

No.	Management Activities	Target Dates	Person Responsible	Cost (Estimated)	Budget Line Item
CR 2	Tract 2008002 Pre-emergent herbicide application on tern and plover nesting habitat OCSW complex	4/1/19 – 4/30/19	TT, JJ	\$4,100	LP-2
CR 3	Disking if necessary to provide in-channel vegetation control -(~50 acres)	9/1/19 – 10/1/19	TT	\$13,900	LP-2

Priority Area: Species Habitat**Item(s):** *Whooping Crane Grassland / Wet Meadow Habitat*

No.	Management Activities	Target Dates	Person Responsible	Cost (Estimated)	Budget Line Item
CR4	Tract 2010001 Prescribed burn (240 ac)	3/15/19 – 5/15/19	TT	\$10,470	LP-2

Item(s): Other Species of Concern

No.	Management Activities	Target Dates	Person Responsible	Cost (Estimated)	Budget Line Item
CR5	Habitat and species surveys on properties where work will occur	As Needed	DB	N/A	N/A
CR6	Coordination with USFWS and NGPC to identify and mitigate potential impacts associated with land activities	As Needed	DB	N/A	N/A

Priority Area: Operations and Maintenance**Item(s):** *Basic Property Maintenance Obligations and Needs*

No.	Management Activities	Target Dates	Person Responsible	Cost (Estimated)	Budget Line Item
CR 7	Fence Replacement - (~10,560 LF)	7/15/19 – 12/15/19	TT	\$30,500	LP-4
CR 8	Fence and road maintenance	1/1/19 – 12/31/19	TT, JJ	\$2,500	LP-4
CR 9	Noxious weed control	6/1/19 – 8/31/19	TT, JJ	\$10,000	LP-4
CR 10	Mowing	7/15/19 - 10/15/19	TT	\$1,000	LP-4

Priority Area: Operations and Maintenance

Item(s): *Agricultural Operations*

No.	Management Activities	Target Dates	Person Responsible	Cost (Estimated)	Budget Line Item
CR 11	Tract 2009006 grazing lease oversight	5/15/19 – 10/15/19	TT	N/A	N/A
CR 12	Tract 2010001 grazing lease oversight	5/15/19 – 10/15/19	TT	N/A	N/A
CR 13	Tract 2010001 haying lease oversight	5/15/19 – 10/15/19	TT	N/A	N/A

Personnel Responsibility Key

JJ – Jim Jenniges (NPPD)

BS – Bruce Sackett (Director of Acquisitions)

DB – David Baasch (Director of Biological and Ecological Services)

JB – Justin Brei (Biosystems Engineer)

KW – Kevin Werbylo (Water Resource Engineer)

TT – Tim Tunnell (Senior Land Manager)

Property Identification Key:

2008002 - NPPD Cottonwood Ranch

2009006 - PRRIP Stall Tract

2010001 - PRRIP Morse Tract

2019 Cottonwood Ranch Complex Budget Summary

Estimated 2019 Expenditures by Program Budget Line Item

Priority Area	Item	Budget Line Item	Estimated Expenditure
Species Habitat	Target Species Sand and Water Habitat	LP-2	\$18,000
Species Habitat	Whooping Crane Wet Meadow/ Grassland Habitat	LP-2	\$10,470
Subtotal			\$28,470
Operations and Maintenance	Property Maintenance and Agricultural Operations	LP-4	\$44,000
Total			\$72,470

Estimated 2019 Revenues

Tract	Item	Estimated Income
Tract 2009006	Grazing Income	\$2,000
Tract 2010001	Grazing Income	\$0
Tract 2010001 SE 1/4	Grazing Income	\$0
Tract 2010001	Haying Income	\$2,500
Total		\$4,500

2019 Elm Creek Complex Annual Work Plan

Platte River Recovery Implementation Program

For More Information Contact: Jason Farnsworth, farnsworthj@headwaterscorp.com (308) 237-5728

General Priorities

- * **Good Neighbor Policy** - Conduct all actions in accordance with Program's good neighbor policy.

Adaptive Management Priorities

- * **Species Monitoring** – Monitor whooping crane use of in-channel roosting habitat and least tern and piping plover use and productivity at off-channel sand and water nesting sites.

Species Habitat Priorities

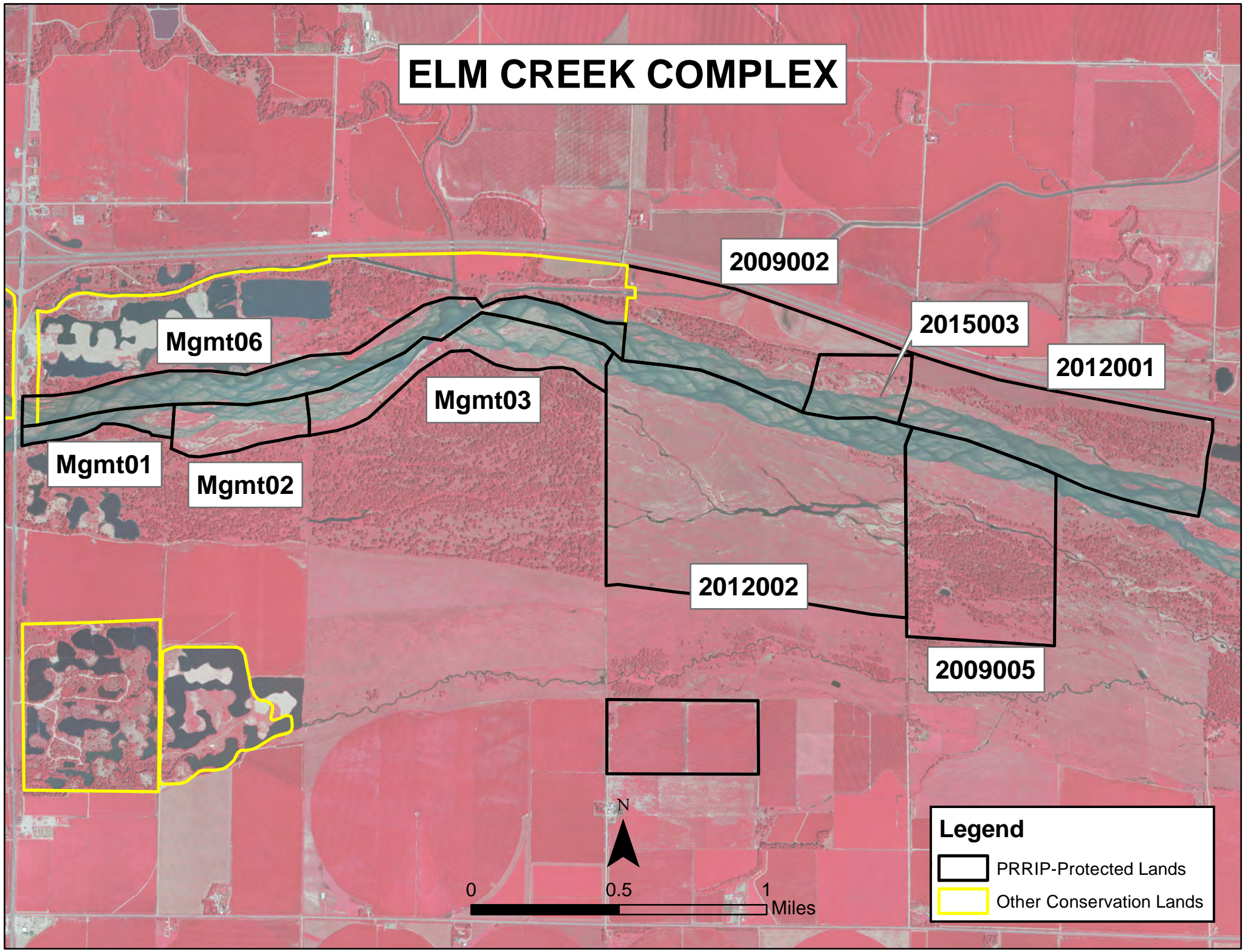
- * **Maintain Target Species Sand and Water Habitat** – Control in-channel vegetation to maintain suitable unobstructed view widths for whooping cranes.
- * **Protecting Other Species of Concern** – Identify presence of and determine methods to protect other species of concern during implementation of land-related activities.

Operations and Maintenance Priorities

- * **Basic Property Maintenance Obligations and Needs** – Fulfill basic property ownership obligations and needs on Tracts 2009002, 2009005, 2012001 and 2012002 including fence and road maintenance and noxious weed control.
- * **Agricultural Operations** – Oversight of grazing/ haying leases on Tracts 2009005, 2012001 and 2012002.

NOTE: The budget section of this work plan only contains information for work items that are specific to these tracts. As such, tract-specific research and monitoring actions are presented but system-scale actions like target species and geomorphology/vegetation monitoring are not.

ELM CREEK COMPLEX



Priority Area: General**Item(s):** *Complex Land Interest and Complex-Level Planning*

No.	Management Activities	Target Dates	Person Responsible	Cost (Estimated)	Budget Line Item
EC 1	Coordination of Program land actions with neighboring landowners	Annual	BS	N/A	N/A

Priority Area: Species Habitat**Item(s):** *Improve Target Species Sand and Water Habitat*

No.	Management Activities	Target Dates	Person Responsible	Cost (Estimated)	Budget Line Item
EC 2	In-channel cross disking (below diversion) and overbank mowing to maintain active channel and unobstructed view widths (50 acres)	9/1/19 – 10/1/19	TT	\$13,900	LP-2

Priority Area: Species Habitat**Item(s):** *Whooping Crane Grassland / Wet Meadow Habitat*

No.	Management Activities	Target Dates	Person Responsible	Cost (Estimated)	Budget Line Item
EC 3	Tract 2009005 Prescribed burn (45 ac)	3/15/19 – 5/15/19	TT	\$1,949	LP-2
EC 4	Tract 2012001 Prescribed burn (64 ac)	3/15/19 – 5/15/19	TT	\$2,805	LP-2
EC 5	Tract 2012002 Prescribed burn (193 ac)	3/15/19 – 5/15/19	TT	\$8,406	LP-2
EC 6	Clear Trees & Burn, Bury at NE corner of tract 2012002	3/1/19 – 4/1/19	TT	\$7,000	LP-2

Priority Area: Species Habitat**Item(s): Other Species of Concern**

No.	Management Activities	Target Dates	Person Responsible	Cost (Estimated)	Budget Line Item
EC 7	Habitat and species surveys on properties where work will occur	As Needed	DB	N/A	N/A
EC 8	Coordination with USFWS and NGPC to identify and mitigate potential impacts associated with land activities	As Needed	DB	N/A	N/A

Priority Area: Operations and Maintenance**Item(s): Basic Property Maintenance Obligations and Needs**

No.	Management Activities	Target Dates	Person Responsible	Cost (Estimated)	Budget Line Item
EC 9	Tract 2009002 building utilities and maintenance	1/1/19 – 12/31/19	TT	\$2,000	LP-4
EC 10	Fence and road maintenance	4/1/19 – 10/1/19	TT	\$1,000	LP-4
EC 11	Mowing	7/15/19 - 10/15/19	TT	\$1,500	LP-4
EC 12	Noxious weed control	6/1/19 – 8/31/19	TT	\$16,000	LP-4

Priority Area: Operations and Maintenance**Item(s): Agricultural Operations**

No.	Management Activities	Target Dates	Person Responsible	Cost (Estimated)	Budget Line Item
EC 13	Tract 2009002 Crop oversight	5/15/19 – 10/15/19	TT	N/A	N/A
EC 14	Tract 2009005 grazing lease oversight	5/15/19 – 10/15/19	TT	N/A	N/A
EC 15	Tract 2012001 haying lease oversight	5/15/19 – 10/15/19	TT	N/A	N/A
EC 16	Tract 2012002 grazing lease oversight	5/15/19 – 10/15/19	TT	N/A	N/A

Personnel Responsibility Key

BS – Bruce Sackett (Director of Acquisitions)

DB – David Baasch (Director of Biological and Ecological Services)

JB – Justin Brei (Biosystems Engineer)

KW – Kevin Werbylo (Water Resource Engineer)

TT – Tim Tunnell (Senior Land Manager)

Property Identification Key:

2009002 – PRRIP Bartels Tract

2009005 – PRRIP McCormick Tract

2012001 – PRRIP Sullwold Tract

2012002 – PRRIP Johns Tract

2015003 – Blue Hole East

2019 Elm Creek Complex Budget Summary

Estimated 2019 Expenditures by Program Budget Line Item

Priority Area	Item	Budget Line Item	Estimated Expenditure
Species Habitat	Target Species Sand and Water Habitat	LP-2	\$13,900
Species Habitat	Whooping Crane Wet Meadow/ Grassland Habitat	LP-2	\$20,160
Subtotal			\$34,060
Operations and Maintenance	Property Maintenance and Agricultural Operations	LP-4	\$20,500
Total			\$54,560

Estimated 2019 Revenues

Tract	Item	Estimated Income
Tract 2009002	Crop Income	\$4,350
Tract 2009005	Grazing Income	\$2,500
Tract 2012001	Haying Income	\$2,000
Tract 2012002	Grazing Income	\$6,000
Total		\$14,850

2019 Pawnee Complex Annual Work Plan

Platte River Recovery Implementation Program

For More Information Contact: Jason Farnsworth, farnsworthj@headwaterscorp.com (308) 237-5728

General Priorities

- * **Good Neighbor Policy** - *Conduct all actions in accordance with Program's good neighbor policy.*

Adaptive Management Priorities

- * **Species Monitoring** – *Monitor whooping crane use of in-channel roosting habitat.*

Species Habitat Priorities

- * **Maintain Target Species Sand and Water Habitat** – *Control in-channel vegetation to maintain suitable unobstructed view widths for whooping cranes. Remove vegetation from overbank areas adjacent to the channel to promote channel widening through lateral erosion.*
- * **Protecting Other Species of Concern** – *Identify presence of and determine methods to protect other species of concern during implementation of land-related activities.*

Operations and Maintenance Priorities

- * **Basic Property Maintenance Obligations and Needs** – *Fulfill basic property ownership obligations and needs on Tracts 2014002 and 2015002.*
- * **Agricultural Operations** – *Oversight of grazing/ haying leases on Tracts 2014002 and 2015002.*

NOTE: The budget section of this work plan only contains information for work items that are specific to these tracts. As such, tract-specific research and monitoring actions are presented but system-scale actions like target species and geomorphology/vegetation monitoring are not.

PAWNEE COMPLEX

Agreement # 10 (1605)

Agreement # 11 (1008)

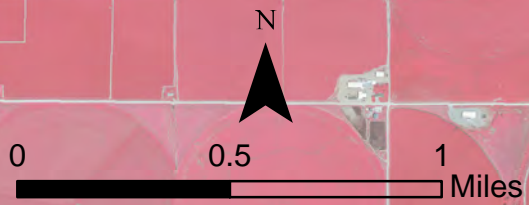
2012001

2015002

2014002

Legend

-  PRRIP-Protected Lands
-  Other Conservation Lands



Priority Area: General**Item(s):** *Complex Land Interest and Good Neighbor Policy*

No.	Management Activities	Target Dates	Person Responsible	Cost (Estimated)	Budget Line Item
PAW 1	Coordination of Program land actions with neighboring landowners	Annual	BS	N/A	N/A

Priority Area: Adaptive Management & Target Species Habitat**Item(s):** *Tern, Plover and Whooping Crane Riverine Habitat Experiments*

No.	Management Activities	Target Dates	Person Responsible	Cost (Estimated)	Budget Line Item
PAW 2	Herbicide treatment on south bank to kill vegetation prior to disking	4/15/19 – 5/15/19	TT	\$2,000	LP-2
PAW 3	In-channel cross disking and overbank mowing to maintain active channel and unobstructed view widths (100 ac)	4/15/19 – 5/15/19 & 9/1/19 – 10/1/19	TT	\$27,800	LP-2

Priority Area: Species Habitat**Item(s):** *Other Species of Concern*

No.	Management Activities	Target Dates	Person Responsible	Cost (Estimated)	Budget Line Item
PAW 4	Habitat and species surveys on properties where work will occur	As Needed	DB	N/A	N/A
PAW 5	Coordination with USFWS and NGPC to identify and mitigate potential impacts associated with land activities	As Needed	DB	N/A	N/A

Priority Area: Operations and Maintenance**Item(s):** *Basic Property Maintenance Obligations and Needs*

No.	Management Activities	Target Dates	Person Responsible	Cost (Estimated)	Budget Line Item
PAW 6	Noxious weed control - (~675 acres)	6/1/19 – 8/31/19	TT	\$9,000	LP-4
PAW 7	Fence and road maintenance	4/1/19 – 10/1/19	TT	\$2,000	LP-4

Priority Area: Operations and Maintenance**Item(s):** *Agricultural Operations*

No.	Management Activities	Target Dates	Person Responsible	Cost (Estimated)	Budget Line Item
PAW 8	Tract 2014002 oversight	5/15/19 – 10/15/19	TT	N/A	N/A
PAW 9	Tract 2015002 oversight	5/15/19 – 10/15/19	TT	N/A	N/A

Personnel Responsibility Key

BS – Bruce Sackett (Director of Acquisitions)

DB – David Baasch (Director of Biological and Ecological Services)

JB – Justin Brei (Biosystems Engineer)

KW – Kevin Werbylo (Water Resource Engineer)

TT – Tim Tunnell (Senior Land Manager)

Property Identification Key:

2014002 - PRRIP Volentine Tract

2015002 - PRRIP BELF Tract

Agreement #10 (1605) - P. Broadfoot

Agreement #11 (1008) - NE DOR Lease

2019 Pawnee Complex Budget Summary

Estimated 2018 Expenditures by Program Budget Line Item

Priority Area	Item	Budget Line Item	Estimated Expenditure
Adaptive Management & Species Habitat	Target Species Sand and Water Habitat	LP-2	\$29,800
Operations and Maintenance	Property Maintenance and Agricultural Operations	LP-4	\$11,000
		Total	\$40,800

Estimated 2019 Revenues

Tract	Item	Estimated Income
Tract 2015002	Crop Income	\$540
Tract 2015002	Grazing Income	\$2,325
Tract 2014002	Grazing Income	\$2,325
	Total	\$5,190

2019 Fort Kearny Complex Annual Work Plan

Platte River Recovery Implementation Program

For More Information Contact: Jason Farnsworth, farnsworthj@headwaterscorp.com (308) 237-5728

General Priorities

- * **Good Neighbor Policy** - Conduct all actions in accordance with Program's good neighbor policy.

Adaptive Management Priorities

- * **Species Monitoring** – Monitor whooping crane use of off-channel palustrine wetlands and in-channel roosting habitat.

Species Habitat Priorities

- * **Maintain Target Species Sand and Water Habitat** – Control in-channel vegetation to maintain suitable unobstructed view widths for whooping cranes. Remove vegetation from overbank areas adjacent to the channel to promote channel widening through lateral erosion.
- * **Protecting Other Species of Concern** – Identify presence of and determine methods to protect other species of concern during implementation of land-related activities.

Operations and Maintenance Priorities

- * **Basic Property Maintenance Obligations and Needs** – Fulfill basic property ownership obligations and needs on Tracts 2008001, 2009001, 2009004, 2010003, 2012003 and 2015001 including fence and road maintenance and noxious weed control.
- * **Agricultural Operations** – Oversight of grazing/haying leases on Tracts 2008001, 2012003, 2009001, 2009004, and 2015001.

NOTE: The budget section of this work plan only contains information for work items that are specific to these tracts. As such, tract-specific research and monitoring actions are presented but system-scale actions like target species and geomorphology/vegetation monitoring are not.

FORT KEARNY COMPLEX

2012003

2009001

2009004

2015001


2010003

2008001



0 0.5 1 Miles

Legend

-  PRRIP-Protected Lands
-  Other Conservation Lands

Priority Area: General**Item(s):** *Complex Land Interest and Good Neighbor Policy*

No.	Management Activities	Target Dates	Person Responsible	Cost (Estimated)	Budget Line Item
FK 1	Coordination of Program land actions with neighboring landowners	Annual	BS	N/A	N/A

Priority Area: Species Habitat**Item(s):** *Improve Target Species Sand and Water Habitat*

No.	Management Activities	Target Dates	Person Responsible	Cost (Estimated)	Budget Line Item
FK 2	Disking if necessary to provide in-channel vegetation control (~83 ac)	9/1/19 – 10/1/19	TT	\$23,075	LP-2

Priority Area: Species Habitat**Item(s):** *Whooping Crane Grassland / Wet Meadow Habitat*

No.	Management Activities	Target Dates	Person Responsible	Cost (Estimated)	Budget Line Item
FK 3	Tract 2009001 Annual electrical service fee at irrigation well to supplement water to wetland	3/1/19 - 4/15/19 & 10/1/19-11/15/19	TT	\$5,400	LP-2
FK 4	Tract 2008001-South Prescribe burn (46 ac)	3/15/19 – 5/15/19	TT	\$1,989	LP-2
FK 5	Tract 2012003- Prescribe burn (77 ac)	3/15/19 – 5/15/19	TT	\$3,360	LP-2
FK 6	Tract 2015001 NE unit Prescribe burn (174 ac)	3/15/19 – 5/15/19	TT	\$7,593	LP-2

Priority Area: Species Habitat**Item(s):** *Other Species of Concern*

No.	Management Activities	Target Dates	Person Responsible	Cost (Estimated)	Budget Line Item
FK 7	Habitat and species surveys on properties where work will occur	As Needed	DB	N/A	N/A
FK 8	Coordination with USFWS and NGPC to identify and mitigate potential impacts associated with land activities	As Needed	DB	N/A	N/A

Priority Area: Operations and Maintenance**Item(s):** *Basic Property Maintenance Obligations and Needs*

No.	Management Activities	Target Dates	Person Responsible	Cost (Estimated)	Budget Line Item
FK 9	Tract 2009004 & 2015001 Electricity	1/1/19 – 12/31/19	TT	\$600	LP-4
FK 10	Noxious weed control	6/1/19 – 8/31/19	TT	\$21,500	LP-4
FK 11	Fence and road maintenance	4/1/19 – 10/1/19	TT	\$4,500	LP-4
FK 12	Mowing	7/15/19- 10/15/19	TT	\$1,000	LP-4

Item(s): *Agricultural Operations*

No.	Management Activities	Target Dates	Person Responsible	Cost (Estimated)	Budget Line Item
FK 13	Tract 2008001 grazing lease oversight	5/15/19 – 10/15/19	TT	N/A	N/A
FK 14	Tract 2012003 grazing lease oversight	5/15/19 – 10/15/19	TT	N/A	N/A
FK 15	Tract 2015001 grazing lease oversight	5/15/19 – 10/15/19	TT	N/A	N/A

Personnel Responsibility Key

BS – Bruce Sackett (Director of Acquisitions)

DB – David Baasch (Director of Biological and Ecological Services)

JB – Justin Brei (Biosystems Engineer)

KW – Kevin Werbylo (Water Resource Engineer)

TT – Tim Tunnell (Senior Land Manager)

Property Identification Key:

2008001 – PRRIP Wyoming Property

2009001 – PRRIP Fox Tract

2009004 – PRRIP Hostetler Tract

2010003 – PRRIP Sherrerd/Clark Easement

2012003 – PRRIP Blessing Tract

2015001 – PRRIP Speidell Tract

2019 Ft Kearny Complex Budget Summary

Estimated 2019 Expenditures by Program Budget Line Item

Priority Area	Item	Budget Line Item	Estimated Expenditure
Species Habitat	Improve Sand and Water Habitat	LP-2	\$23,075
Species Habitat	Whooping Crane Wet Meadow/ Grassland Habitat	LP-2	\$18,342
Subtotal			\$41,417
Operations and Maintenance	Property Maintenance and Agricultural Operations	LP-4	\$27,600
Total			\$69,017

Estimated 2019 Revenues

Tract	Item	Estimated Income
Tract 2008001 N & 2012003	Grazing Income	\$0
Tract 2008001 S	Haying Income	\$7,000
Tract 2009001	Grazing Income	\$0
Tract 2009004	Grazing Income	\$11,550
Tract 2012003	Cropland Income	\$1,850
Tract 2015001	Grazing Income	\$16,500
Total		\$36,900

2019 Minden – Gibbon Management Agreement Annual Work Plan

Platte River Recovery Implementation Program

For More Information Contact: Jason Farnsworth, farnsworthj@headwaterscorp.com (308) 237-5728

Adaptive Management Priorities

- * **Species Monitoring** – Monitor whooping crane use of in-channel roosting habitat.

Species Habitat Priorities

- * **Maintain Target Species Sand and Water Habitat** – Control in-channel vegetation to maintain suitable unobstructed view widths for whooping cranes.
- * **Protecting Other Species of Concern** – Identify presence of and determine methods to protect other species of concern during implementation of land-related activities.

Priority Area: Species Habitat

Item(s): *Improve Target Species Sand and Water Habitat*

No.	Management Activities	Target Dates	Person Responsible	Cost (Estimated)	Budget Line Item
M-G 1	Disking if necessary to provide in-channel vegetation control (~70 ac)	9/1/19 – 10/1/19	TT	\$20,295	LP-2

Personnel Responsibility Key

BS – Bruce Sackett (Director of Acquisitions)

DB – David Baasch (Director of Biological and Ecological Services)

JB – Justin Brei (Biosystems Engineer)

KW – Kevin Werbylo (Water Resource Engineer)

TT – Tim Tunnell (Senior Land Manager)

MINDEN - GIBBON MANAGEMENT AGREEMENT



2009008

09 Rowe



0 0.5 1 Miles

Legend

-  PRRIP-Protected Lands
-  Other Conservation Lands

2019 Minden-Gibbon Management Agreement Budget Summary

Estimated 2019 Expenditures by Program Budget Line Item

Priority Area	Item	Budget Line Item	Estimated Expenditure
Species Habitat	Improve Target Species Sand and Water Habitat	LP-2	\$20,295
		Total	\$20,295

2019 Clark Island Complex Annual Work Plan

Platte River Recovery Implementation Program

For More Information Contact: Jason Farnsworth, farnsworthj@headwaterscorp.com (308) 237-5728

General Priorities

- * **Good Neighbor Policy** - Conduct all actions in accordance with Program's good neighbor policy.

Adaptive Management Priorities

- * **Species Monitoring** – Monitor whooping crane use of palustrine wetlands and in-channel roosting habitat.
- * **Off-Channell Tern and Plover Nesting Habitat** – Design and construction of ??-acre off-channel sand and water (OCSW)tern

Species Habitat Priorities

- * **Maintain Target Species Sand and Water Habitat** – Control in-channel vegetation to maintain suitable unobstructed view widths for whooping cranes.
- * **Protecting Other Species of Concern** – Identify presence of and determine methods to protect other species of concern during implementation of land-related activities.

Operations and Maintenance Priorities

- * **Basic Property Maintenance Obligations and Needs** – Fulfill basic property ownership obligations and needs on Tract 2010004 including fence and road maintenance and noxious weed control.
- * **Agricultural Operations** – Oversight of grazing/ haying leases on Tract 2010004

NOTE: The budget section of this work plan only contains information for work items that are specific to these tracts. As such, tract-specific research and monitoring actions are presented but system-scale actions like target species and geomorphology/vegetation monitoring are not.



CLARK ISLAND COMPLEX

2018001



0 0.5 1 Miles

Legend

-  PRRIP-Protected Lands
-  Other Conservation Lands

Priority Area: General**Item(s):** *Complex Land Interest and Complex-Level Planning*

No.	Management Activities	Target Dates	Person Responsible	Cost (Estimated)	Budget Line Item
CI 1	Coordination of Program land actions with neighboring landowners	Annual	BS	N/A	N/A

Priority Area: Adaptive Management**Item(s):** *Off-Channel Tern and Plover Nesting Habitat*

No.	Management Activities	Target Dates	Person Responsible	Cost (Estimated)	Budget Line Item
CI 2	Engineering design, permitting and bidding	1/1/19 – 7/15/19	JB	N/A	N/A
CI 3	Construction of OCSW habitat	7/15/19 – 12/31/19	JB	\$1,800,000	LP-2

Priority Area: Species Habitat**Item(s):** *Improve Target Species Sand and Water Habitat*

No.	Management Activities	Target Dates	Person Responsible	Cost (Estimated)	Budget Line Item
CI 4	Disking if necessary to provide in-channel vegetation control (~90 ac)	9/1/19 – 10/1/19	TT	\$25,000	LP-2

Priority Area: Species Habitat**Item(s):** *Whooping Crane Grassland / Wet Meadow Habitat*

CI 5	Tract 2018001 Russian Olive & Tree Pile Removal	1/15/19 – 5/15/19	TT	\$15,000	LP-2
------	---	-------------------	----	----------	------

Priority Area: Species Habitat**Item(s):** *Other Species of Concern*

No.	Management Activities	Target Dates	Person Responsible	Cost (Estimated)	Budget Line Item
CI 6	Habitat and species surveys on properties where work will occur	As Needed	DB	N/A	N/A
CI 7	Coordination with USFWS and NGPC to identify and mitigate potential impacts associated with land activities	As Needed	DB	N/A	N/A

Priority Area: Operations and Maintenance**Item(s):** *Basic Property Maintenance Obligations and Needs*

No.	Management Activities	Target Dates	Person Responsible	Cost (Estimated)	Budget Line Item
CI 8	Fence and road maintenance	1/1/19 – 12/31/19	TT	\$10,000	LP-4
CI 9	Noxious weed control	6/1/19 – 8/31/19	TT	\$4,500	LP-4
CI 10	Mowing	7/15/19- 10/15/19	TT	\$1,500	LP-4

Priority Area: Operations and Maintenance**Item(s):** *Agricultural Operations*

No.	Management Activities	Target Dates	Person Responsible	Cost (Estimated)	Budget Line Item
CI 11	Tract 2018001 grazing & haying lease oversight	5/15/19 – 10/15/19	TT	N/A	N/A

Personnel Responsibility Key

BS – Bruce Sackett (Director of Acquisitions)

DB – David Baasch (Director of Biological and Ecological Services)

JB – Justin Brei (Biosystems Engineer)

KW – Kevin Werbylo (Water Resource Engineer)

TT – Tim Tunnell (Senior Land Manager)

Property Identification Key:

2018001 – PRRIP Dippel Tract

2019 Clark Island Complex Budget Summary

Estimated 2019 Expenditures by Program Budget Line Item

Priority Area	Item	Budget Line Item	Estimated Expenditure
Adaptive Management	Off-channel Tern & Plover Nesting Habitat Construction	LP-2	\$1,800,000
Species Habitat	Improve Target Species Sand and Water Habitat	LP-2	\$25,000
Species Habitat	Whooping Crane Wet Meadow/ Grassland Habitat	LP-2	\$15,000
Subtotal			\$1,840,000
Operations and Maintenance	Property Maintenance and Agricultural Operations	LP-4	\$16,000
Total			\$1,856,000

Estimated 2019 Revenues

Tract	Item	Estimated Income
Tract 2018001	Grazing Income	\$7,150
Tract 2018001	Cropland Cash Rent Income	\$23,120
Total		\$30,270

2019 Shoemaker Island Complex Annual Work Plan

Platte River Recovery Implementation Program

For More Information Contact: Jason Farnsworth, farnsworthj@headwaterscorp.com (308) 237-5728

General Priorities

- * ***Good Neighbor Policy*** - Conduct all actions in accordance with Program's good neighbor policy.

Adaptive Management Priorities

- * ***Species Monitoring*** – Monitor whooping crane use of palustrine wetlands and in-channel roosting habitat.

Species Habitat Priorities

- * ***Maintain Target Species Sand and Water Habitat*** – Control in-channel vegetation to maintain suitable unobstructed view widths for whooping cranes.
- * ***Protecting Other Species of Concern*** – Identify presence of and determine methods to protect other species of concern during implementation of land-related activities.

Operations and Maintenance Priorities

- * ***Basic Property Maintenance Obligations and Needs*** – Fulfill basic property ownership obligations and needs on Tract 2010004 including fence and road maintenance and noxious weed control.
- * ***Agricultural Operations*** – Oversight of grazing/ haying leases on Tract 2010004

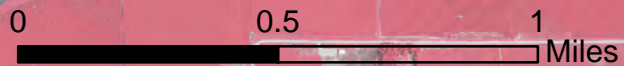
NOTE: The budget section of this work plan only contains information for work items that are specific to these tracts. As such, tract-specific research and monitoring actions are presented but system-scale actions like target species and geomorphology/vegetation monitoring are not.

SHOEMAKER ISLAND COMPLEX


2010004

07-WCMT

08-Foot & Osborne



Legend

-  PRRIP-Protected Lands
-  Other Conservation Lands

Priority Area: General**Item(s):** *Complex Land Interest and Complex-Level Planning*

No.	Management Activities	Target Dates	Person Responsible	Cost (Estimated)	Budget Line Item
SI 1	Coordination of Program land actions with neighboring landowners	Annual	BS	N/A	N/A

Priority Area: Species Habitat**Item(s):** *Improve Target Species Sand and Water Habitat*

No.	Management Activities	Target Dates	Person Responsible	Cost (Estimated)	Budget Line Item
SI 2	Disking if necessary to provide in-channel vegetation control (~75 ac)	9/1/19 – 10/1/19	TT	\$20,850	LP-2

Priority Area: Species Habitat**Item(s):** *Whooping Crane Grassland / Wet Meadow Habitat*

SI 3	Tract 2010004-South Prescribe burn (514 ac)	3/15/19 – 5/15/19	TT	\$22,425	LP-2
------	---	-------------------	----	----------	------

Priority Area: Species Habitat**Item(s):** *Other Species of Concern*

No.	Management Activities	Target Dates	Person Responsible	Cost (Estimated)	Budget Line Item
SI 4	Habitat and species surveys on properties where work will occur	As Needed	DB	N/A	N/A
SI 5	Coordination with USFWS and NGPC to identify and mitigate potential impacts associated with land activities	As Needed	DB	N/A	N/A

Priority Area: Operations and Maintenance**Item(s): Basic Property Maintenance Obligations and Needs**

No.	Management Activities	Target Dates	Person Responsible	Cost (Estimated)	Budget Line Item
SI 6	Fence and road maintenance	1/1/19 – 12/31/19	TT	\$1,500	LP-4
SI 7	Noxious weed control	6/1/19 – 8/31/19	TT	\$3,500	LP-4
SI 8	Mowing	7/15/19- 10/15/19	TT	\$1,500	LP-4

Priority Area: Operations and Maintenance**Item(s): Agricultural Operations**

No.	Management Activities	Target Dates	Person Responsible	Cost (Estimated)	Budget Line Item
SI 9	Tract 2010004 grazing & haying lease oversight	5/15/19 – 10/15/19	TT	N/A	N/A

Personnel Responsibility Key

BS – Bruce Sackett (Director of Acquisitions)

DB – David Baasch (Director of Biological and Ecological Services)

JB – Justin Brei (Biosystems Engineer)

KW – Kevin Werbylo (Water Resource Engineer)

TT – Tim Tunnell (Senior Land Manager)

Property Identification Key:

2010004 – PRRIP Binfield Tract

2019 Shoemaker Island Complex Budget Summary

Estimated 2019 Expenditures by Program Budget Line Item

Priority Area	Item	Budget Line Item	Estimated Expenditure
Species Habitat	Improve Target Species Sand and Water Habitat	LP-2	\$20,850
Species Habitat	Whooping Crane Wet Meadow/ Grassland Habitat	LP-2	\$22,425
Subtotal			\$43,275
Operations and Maintenance	Property Maintenance and Agricultural Operations	LP-4	\$6,500
Total			\$49,775

Estimated 2019 Revenues

Tract	Item	Estimated Income
Tract 2010004	Grazing & Haying Income	\$46,025
Tract 2011001	Haying Income	\$1,010
Total		\$47,035

2019 Water Properties Annual Work Plan

Platte River Recovery Implementation Program

For More Information Contact: Jason Farnsworth, farnsworthj@headwaterscorp.com (308) 237-5728

General Priorities

- * **Good Neighbor Policy** - Conduct all actions in accordance with Program's good neighbor policy.

Operations and Maintenance Priorities

- * **Basic Property Maintenance Obligations and Needs** – Fulfill basic property ownership obligations and needs on Tracts W2016001, W2016002, W2017001, & W2017002 including fence and road maintenance, irrigation management and noxious weed control.
- * **Agricultural Operations** – Oversight of grazing/ haying lease on Tract W2016001 and custom farming on Tract W2016002

Priority Area: General

Item(s): *Complex Land Interest and Complex-Level Planning*

No.	Management Activities	Target Dates	Person Responsible	Cost (Estimated)	Budget Line Item
WP 1	Coordination of Program land actions with neighboring landowners	Annual	BS	N/A	N/A

Priority Area: Operations and Maintenance

Item(s): *Basic Property Maintenance Obligations and Needs*

No.	Management Activities	Target Dates	Person Responsible	Cost (Estimated)	Budget Line Item
WP 2	Fence and road maintenance	1/1/19 – 12/31/19	TT	\$7,000	WP-4 (j)
WP 3	Noxious weed control	6/1/19 – 8/31/19	TT	\$15,000	WP-4 (j)
WP 4	Mowing	7/15/19- 10/15/19	TT	\$2,000	WP-4 (j)
WP 5	Tract W2016002 Custom Farm Expense	5/15/19 – 10/15/19	TT	\$23,000	WP-4 (j)

WATER PROPERTIES

W201701

Dawson County

W201703

Phelps County

W201602

Buffalo County

W201702

Lincoln County

Source: Esri, DigitalGlobe, GeoEye, Earthstar
Geographics, CNES/Airbus DS, USDA, USGS,
AeroGRID, IGN, and the GIS User Community

Priority Area: Operations and Maintenance

Item(s): *Agricultural Operations*

No.	Management Activities	Target Dates	Person Responsible	Cost (Estimated)	Budget Line Item
WP 6	TractW 2016002 Lease Oversight	5/15/19 – 10/15/19	TT	N/A	WP-4 (j)

Personnel Responsibility Key

BS – Bruce Sackett (Director of Acquisitions)

DB – David Baasch (Director of Biological and Ecological Services)

JB – Justin Brei (Biosystems Engineer)

KW – Kevin Werbylo (Water Resource Engineer)

TT – Tim Tunnell (Senior Land Manager)

ST – Seth Turner (Senior Water Resources Engineer)

Property Identification Key:

W201602 – PRRIP Lindstrum Tract

W201701 – PRRIP Edlund Tract

W201702 - PRRIP Albrecht Tract

W201703 - PRRIP Lakeside Tract

2019 Water Properties Budget Summary

Estimated 2019 Expenditures by Program Budget Line Item

Priority Area	Item	Budget Line Item	Estimated Expenditure
Operations and Maintenance	Property Maintenance and Agricultural Operations	WP-4j	\$47,000
		Total	\$47,000

Estimated 2019 Revenues

Tract	Item	Estimated Income
Tract W201602	Crop Income	\$5,760
Tract W201701	N/A	\$0
Tract W201702	N/A	\$0
	Total	\$5,760



2019 Property Maintenance and Agricultural Operations (LP-4), Adaptive Management Species Habitat Actions (LP-2) and Property Maintenance for Water Properties (WP-4 (i)) Budget Documentation

This document is a supplement to the 2019 Land Work Plan. It provides documentation for the 2019 Property Maintenance and Agricultural Operations (LP-4), Adaptive Management Species Habitat Actions (LP-2) and Property Maintenance for Water Properties (WP-4 (j)) budgets for Program habitat complexes, non-complex properties and water properties. Documentation is organized by habitat complex (non-complex and water properties are lumped together) and can be indexed back to the work plan via task numbers.

NON-COMPLEX PROPERTIES

Task: **NC 2**

Line Item: LP-2

Tract No: Multiple

Description: Herbicide applications on OCSW peninsulas to maintain bare sand nesting habitat

Estimated Cost: \$10,510

Justification: Pre-emergent herbicide is applied annually to 61 acres of off-channel sand and water habitat in late spring and glyphosate is applied in the late summer to spot-treat vegetation. In 2018, actual pre-emergent treatment cost was \$117/ac and glyphosate treatment were \$55/ac for a total cost of \$10,672. The 2019 cost estimate is based on the 2018 expenditure for this task. SEE P18-001 BID TAB. The work will be procured through the Program's competitive selection process and work will be performed by lowest cost contractor(s) that provide the best value to the Program.

Task: **NC 3**

Line Item: LP-2

Tract No: unknown

Description: Construct 10 acres of on-channel LT/PP nesting habitat

Estimated Cost: \$15,330

Justification: The proposed work includes, 10 acres @ \$1,000/ acres of total tree clearing, approximately 10 tree piles to burn & bury @ \$200/ pile, and 10 acres @ \$333/ acre of overbank disking. SEE P16-012 BID TAB. The work will be procured through the Program's competitive selection process and work will be performed by lowest cost contractor that provides the best value to the Program.

Task: **NC 4**

Line Item: LP-2

Tract No: 2013001

Description: Irrigation well pumping to augment water level in wetland areas.

Estimated Cost: \$2,235

Justification: Costs are associated with charges for electricity. Irrigation well on the tract is typically turned on in late March and again in the first couple of weeks of October in order to have standing water in the wetlands ahead of the whooping crane migration. Costs are dependent on the amount of time the electric well is on and pumping. In the spring of 2017, the well ran for 1,299 hours of pumping for a total charge of \$2,235 or \$1.72/hour.

Task: **NC 5**

Line Item: LP-2

Tract No: Multiple

Description: Brush, tree, cattail herbicide spraying.

Estimated Cost: \$3,300

Justification: Brush/ tree spraying is applied by spot spraying from an ATV, UTV, Argo or airboat depending on the situation. In 2015, there were 15 hours of actual brush/ tree & Phragmites/ cattail spraying on non-complex properties. Treatment cost was \$220/ hour for a total of \$3,243.00. The 2018 cost estimate is based on the 2015 expenditure for this task. SEE P18-001 BID TAB. The work will be procured through the Program's competitive selection process and work will be performed by lowest cost contractor(s) that provide the best value to the Program.

Task: **NC 6**

Line Item: LP-2

Tract No: Tract 2013001

Description: Farmed Wetland Custom Farming Expenses.

Estimated Cost: \$16,500

Justification: The farmed wetland on Tract 2013001 was constructed with berms, water control structure and underground pipeline to supplement the farmed wetland from the irrigation well during fall and spring WC migration as part of an Adaptive Management Experiment. Due to the nature of the experiment and the need to flood the field in the spring and fall, the tract is being custom farmed by a local producer. The expenses for 2018 corn crop on the 62 acres were \$16,270. The 2019 cost estimate is based on the 2018 expenditure for this task. See Exhibit B in the 2018 Custom Farming Agreement for Tract 2013001 for Custom Farming Rates.

Task: NC 9
Line Item: LP-4
Tract No: Multiple
Description: Fence and Road Maintenance
Estimated Cost: \$1,500

Justification: There are no identified fence or road maintenance issues. This task is included to cover issues that may arise in regards to fence or roads on Non-complex tracts. When/ if an issue arises, the work will be procured through the Program's competitive selection process and work will be performed by lowest cost contractor that provides the best value to the Program. Typical costs of a linear foot of standard 4 wire-barbed wire fence is \$2.10-2.90/ linear foot, fence repair \$0.50- 2.80/ linear foot depending on what is needed for repair and road maintenance with a road grader was \$100/ hour in 2017.

Task: NC 10
Line Item: LP-4
Tract No: Multiple
Description: Noxious Weed Control
Estimated Cost: \$2,000

Justification: Noxious weed spraying is applied by spot spraying from an ATV or UTV to 710 acres of Non-complex tracts annually. In 2018, actual noxious weed treatment cost was \$126/ hour for a total of \$823 or \$6/ac. The 2019 cost estimate is based on the 2018 expenditure for this task. SEE P18-001 BID TAB. The work will be procured through the Program's competitive selection process and work will be performed by lowest cost contractor(s) that provide the best value to the Program.

Task: NC 11
Line Item: LP-4
Tract No: Multiple
Description: Mowing
Estimated Cost: \$1,000

Justification: Mowing is occasionally needed outside of the MBTA window on areas that are not being managed as bare-sand nesting areas. Mowing costs in 2018 were \$130.50/ hour which includes equipment, labor and mobilization. It is anticipated that 7.5 hours of mowing will be required on Non-complex tracts in 2019. The work will be procured through the Program's competitive selection process and work will be performed by lowest cost contractor that provides the best value to the Program.

COMPLEX PROPERTIES

Plum Creek Complex

Task: **PC 3**

Line Item: LP-2

Tract No: 2009003

Description: Herbicide applications on OCSW peninsulas to maintain bare sand nesting habitat

Estimated Cost: \$4,300

Justification: Pre-emergent herbicide is applied annually to 21 acres of off-channel sand and water habitat in late spring and glyphosate is applied in the late summer to spot-treat vegetation. In 2018, actual pre-emergent treatment cost was \$160/ac and glyphosate treatment were \$41/ac. The 2019 cost estimate is based on the 2018 expenditure for this task. SEE P18-001 BID TAB. The work will be procured through the Program's competitive selection process and work will be performed by lowest cost contractor(s) that provide the best value to the Program.

Task: **PC 4**

Line Item: LP-2

Tract No: 2009003 & 2009007

Description: Disking if necessary to provide in-channel vegetation control. Approximately 71 acres.

Estimated Cost: \$19,750

Justification: In 2018, the average cost was \$242/ acre or \$300/hour with a Challenger tractor and 10-foot disk. With the costs for mob/demob included, average cost was \$278/ac or \$363/ hr. Under favorable river condition (flow less than 500 cfs) disking can be done at a rate of 1.5- 2 acres/ hour. SEE P18-008 BID TAB. The work will be procured through the Program's competitive selection process and work will be performed by lowest cost contractor that provides the best value to the Program.

Task: **PC 5&6**

Line Item: LP-2

Tract No: 2009003 (151 ac) & 2009007 (58 ac)

Description: Prescribed Burn

Estimated Cost: \$9,210

Justification: The Spring 2016-2018 Prescribed Fire Management Services RFP was advertised on the Program website and regional newspapers on or around January 15, 2016 and closed on February 19, 2016. Proposals were submitted from four NWCG qualified companies from Oklahoma, Washington, Texas and Nebraska. CHLOETA was chosen through this competitive selection process due to their cost, prior work for the Program, and proven track record, experienced crew, and equipment. CHLOETA's bid was \$43.59/acre. SEE P16-002 BID TAB. The current 3-year contract with CHLOETA has expired. The EDO will submit a sole source justification to hire CHLOETA for the 2019 Rx fire season at rates quoted in 2016. Once the Program Extension is in place the EDO will solicit bids for a 3-year contract through the Program's competitive selection process.

Task: **PC 9**

Line Item: LP-4

Tract No: 2009003 & 2009007

Description: Fence & Road Maintenance

Estimated Cost: \$1,000

Justification: There are no identified fence or road maintenance issues. This task is included to cover issues that may arise in regards to fence or roads on Plum Creek complex tracts. When/ if an issue arises, the work will be procured through the Program's competitive selection process and work will be performed by lowest cost contractor that provides the best value to the Program. Typical costs of a linear foot of standard 4 wire-barbed wire fence is \$2.10-2.90/ linear foot, fence repair \$0.50- 2.80/ linear foot depending on what is needed for repair and road maintenance with a road grader was \$100/ hr in 2015.

Task: **PC 10**

Line Item: LP-4

Tract No: 2009003 & 2009007

Description: Noxious Weed Control

Estimated Cost: \$6,500

Justification: Noxious weed spraying is applied by spot spraying from an ATV or UTV to 226 acres of Plum Creek complex tracts annually. In 2018, actual noxious weed treatment cost was \$135/ hour for a total of \$6,678.00 or \$30/ac. The 2019 cost estimate is based on the 2018 expenditure for this task. SEE P18-001 BID TAB. The work will be procured through the Program's competitive selection process and work will be performed by lowest cost contractor(s) that provide the best value to the Program.

Task: **PC 11**

Line Item: LP-4

Tract No: 2009003
Description: Lodge & Quonset utilities and maintenance
Estimated Cost: \$5,600

Justification: The cost of utilities and maintenance items for 2019 are as follows:
Electricity: \$2,468.01
Trash pick-up: \$588.00
Cleaning: \$1,360
Direct TV: \$1,154

Task: **PC 12**
Line Item: LP-4
Tract No: 2009003 & 2009007
Description: Mowing
Estimated Cost: \$2,000

Justification: Mowing is occasionally needed outside of the MBTA window on areas that are not being managed as bare-sand nesting areas. Mowing costs in 2018 were \$133.00/ hour which includes equipment, labor and mobilization. It is anticipated that 15 hours of mowing will be required on Plum Creek complex tracts in 2019. The work will be procured through the Program's competitive selection process and work will be performed by lowest cost contractor that provides the best value to the Program.

Cottonwood Ranch Complex

Task: **CR 2**
Line Item: LP-2
Tract No: 2008002
Description: Herbicide applications on OCSW peninsulas to maintain bare sand nesting habitat
Estimated Cost: \$4,100

Justification: Pre-emergent herbicide is applied annually to 17 acres of off-channel sand and water habitat in late spring and glyphosate is applied in the late summer to spot-treat vegetation. In 2018, actual pre-emergent treatment cost was \$195/ac and glyphosate treatment were \$27/ac. The 2019 cost estimate is based on the 2018 expenditure for this task. SEE P18-001 BID TAB. The

work will be procured through the Program's competitive selection process and work will be performed by lowest cost contractor(s) that provide the best value to the Program.

Task: **CR 3**

Line Item: LP-2

Tract No: 2008002

Description: Disking if necessary to provide in-channel vegetation control. Approximately 50 acres.

Estimated Cost: \$13,900

Justification: In 2018, the average cost was \$242/ acre or \$300/hour with a Challenger tractor and 10-foot disk. With the costs for mob/demob included, average cost was \$278/ac or \$363/ hr. Under favorable river condition (flow less than 500 cfs) disking can be done at a rate of 1.5- 2 acres/ hour. SEE P18-008 BID TAB. The work will be procured through the Program's competitive selection process and work will be performed by lowest cost contractor that provides the best value to the Program.

Task: **CR 4**

Line Item: LP-2

Tract No: 2010001 (240 ac)

Description: Prescribed Burn

Estimated Cost: \$10,470

Justification: The Spring 2016-2018 Prescribed Fire Management Services RFP was advertised on the Program website and regional newspapers on or around January 15, 2016 and closed on February 19, 2016. Proposals were submitted from four NWCG qualified companies from Oklahoma, Washington, Texas and Nebraska. CHLOETA was chosen through this competitive selection process due to their cost, prior work for the Program, and proven track record, experienced crew, and equipment. CHLOETA's bid was \$43.59/acre. SEE P16-002 BID TAB. The current 3-year contract with CHLOETA has expired. The EDO will submit a sole source justification to hire CHLOETA for the 2019 Rx fire season at rates quoted in 2016. Once the Program Extension is in place the EDO will solicit bids for a 3-year contract through the Program's competitive selection process.

Task: **CR 7**

Line Item: LP-4

Tract No: 2008002 & 2010001

Description: Replace 2 miles of perimeter fence (10,560 LF)

Estimated Cost: \$30,500

Justification: The perimeter fence on portions of these tracts will be replaced after construction work is completed for the Groundwater Recharge Project. The cost estimate is based on 10,560 LF of fence removal @ \$0.30/ LF, 10,560 LF of new construction @ \$2.45/ LF, 4- 12' metal gates @ \$214 each and 2- 16' metal gates @ \$255. SEE P17-023 BID TAB. The work will be procured through the Program's competitive selection process and work will be performed by lowest cost contractor that provides the best value to the Program.

Task: **CR 8**

Line Item: LP-4

Tract No: 2008002, 2010001, 2009006

Description: Fence & Road Maintenance

Estimated Cost: \$2,500

Justification: There are no identified fence or road maintenance issues. This task is included to cover issues that may arise in regards to fence or roads on Cottonwood Ranch complex tracts. When/ if an issue arises, the work will be procured through the Program's competitive selection process and work will be performed by lowest cost contractor that provides the best value to the Program. Typical costs of a linear foot of standard 4 wire-barbed wire fence is \$2.10-2.90/ linear foot, fence repair \$0.50- 2.80/ linear foot depending on what is needed for repair and road maintenance with a road grader was \$100/ hr in 2015.

Task: **CR 9**

Line Item: LP-4

Tract No: 2008002, 2010001, 2009006

Description: Noxious Weed Control

Estimated Cost: \$10,000

Justification: Noxious weed spraying is applied by spot spraying from an ATV or UTV to 1,104 acres of Cottonwood Ranch complex tracts annually. In 2018, actual noxious weed treatment cost was \$66/ hour for a total of \$9,845.00 or \$9/ac. The 2019 cost estimate is based on the 2018 expenditure for this task. SEE P18-001 BID TAB. The work will be procured through the Program's competitive selection process and work will be performed by lowest cost contractor(s) that provide the best value to the Program.

Task: **CR 10**

Line Item: LP-4

Tract No: 2008002, 2010001, 2009006

Description: Mowing

Estimated Cost: \$1,000

Justification: Mowing is occasionally needed outside of the MBTA window on areas that are not being managed as bare-sand nesting areas. Mowing costs in 2018 were \$133.00/ hour which includes equipment, labor and mobilization. It is anticipated that 7.5 hours of mowing will be required on Cottonwood Ranch complex tracts in 2019. The work will be procured through the Program's competitive selection process and work will be performed by lowest cost contractor that provides the best value to the Program.

Elm Creek Complex

Task: **EC 2**

Line Item: LP-2

Tract No: 2009002, 2015003, 2012001, 2009005, & 2012002

Description: Disking if necessary to provide in-channel vegetation control. Approximately 50 acres.

Estimated Cost: \$13,900

Justification: In 2018, the average cost was \$242/ acre or \$300/hour with a Challenger tractor and 10-foot disk. With the costs for mob/demob included, average cost was \$278/ac or \$363/ hr. Under favorable river condition (flow less than 500 cfs) disking can be done at a rate of 1.5- 2 acres/ hour. SEE P18-008 BID TAB. The work will be procured through the Program's competitive selection process and work will be performed by lowest cost contractor that provides the best value to the Program.

Task: **EC 3, 4, & 5**

Line Item: LP-2

Tract No: 2009005 (45 ac), 2012001 (64 ac), & 2012002 (193 ac)

Description: Prescribed Burn

Estimated Cost: \$13,160

Justification: The Spring 2016-2018 Prescribed Fire Management Services RFP was advertised on the Program website and regional newspapers on or around January 15, 2016 and closed on February 19, 2016. Proposals were submitted from four NWCG qualified companies from Oklahoma, Washington, Texas and Nebraska. CHLOETA was chosen through this competitive selection process due to their cost, prior work for the Program, and proven track record, experienced crew, and equipment. CHLOETA's bid was \$43.59/acre. SEE P16-002 BID TAB. The current 3-year contract with CHLOETA has expired. The EDO will submit a sole source justification to hire CHLOETA for the 2019 Rx fire season at rates quoted in 2016. Once the Program Extension is in place the EDO will solicit bids for a 3-year contract through the Program's competitive selection process.

Task: **EC 6**

Line Item: LP-2

Tract No: Tract 2012002

Description: Clear Trees & Burn, bury at NE corner of tract

Estimated Cost: \$7,000

Justification: The proposed work includes, 6 acres @ \$875/ acre of total tree clearing and approximately 6 tree piles to burn & bury @ \$200/ pile. SEE P17-011 BID TAB. The work will be procured through the Program's competitive selection process and work will be performed by lowest cost contractor that provides the best value to the Program.

Task: **EC 9**

Line Item: LP-4

Tract No: 2009002

Description: Cabin utilities and maintenance

Estimated Cost: \$2,000

Justification: The cost of utilities and maintenance items for 2018 are as follows:

Electricity: \$731

Cleaning: \$1,050

Task: **EC 10**

Line Item: LP-4

Tract No: 2009002, 2015003, 2012001, 2009005, & 2012002

Description: Fence & Road Maintenance

Estimated Cost: \$1,000

Justification: There are no identified fence or road maintenance issues. This task is included to cover issues that may arise in regards to fence or roads on Elm Creek complex tracts. When/ if an issue arises, the work will be procured through the Program's competitive selection process and work will be performed by lowest cost contractor that provides the best value to the Program. Typical costs of a linear foot of standard 4 wire-barbed wire fence is \$2.10-2.90/ linear foot, fence repair \$0.50- 2.80/ linear foot depending on what is needed for repair and road maintenance with a road grader was \$100/ hr in 2015.

Task: **EC 11**

Line Item: LP-4

Tract No: 2009002, 2015003, 2012001, 2009005, & 2012002

Description: Mowing

Estimated Cost: \$1,500

Justification: Mowing is occasionally needed outside of the MBTA window on areas that are not being managed as bare-sand nesting areas. Mowing costs in 2018 were \$133.00/ hour which includes equipment, labor and mobilization. It is anticipated that 10 hours of mowing will be required on Cottonwood Ranch complex tracts in 2019. The work will be procured through the Program's competitive selection process and work will be performed by lowest cost contractor that provides the best value to the Program.

Task: **EC 12**

Line Item: LP-4

Tract No: 2009002, 2015003, 2012001, 2009005, & 2012002

Description: Noxious Weed Control

Estimated Cost: \$16,000

Justification: Noxious weed spraying is applied by spot spraying from an ATV or UTV to 704 acres of Elm Creek complex tracts annually. In 2018, actual noxious weed treatment cost was \$119/ hour for a total of \$15,883.00 or \$23/ac. The 2019 cost estimate is based on the 2018 expenditure for this task. SEE P18-001 BID TAB. The work will be procured through the Program's competitive selection process and work will be performed by lowest cost contractor(s) that provide the best value to the Program.

Pawnee Complex

Task: **PAW 2**

Line Item: LP-2

Tract No: Tracts 2014002 & 2015002

Description: Overbank Herbicide Treatment

Estimated Cost: \$2,000

Justification: In 2016, as part of P16-012 Pawnee Complex Habitat Enhancement project, 11 acres were cleared and grubbed of all vegetation and left bare so that the river would work to widen the channel. This project is to kill the reestablished vegetation on approximately 20 acres on the south bank prior to disking in the fall of 2018. The cost estimate is based on \$150/ hour for Airboat application and \$38/ acre for herbicide and surfactant. SEE P18-001 BID TAB. The work will be procured through the Program's competitive selection process and work will be performed by lowest cost contractor that provides the best value to the Program.

Task: **PAW 3**

Line Item: LP-2

Tract No: 2014002, 2015002 & Agreement #11 (1008)

Description: Disking if necessary to provide in-channel vegetation control. Approximately 100 acres.

Estimated Cost: \$27,800

Justification: In 2018, the average cost was \$242/ acre or \$300/hour with a Challenger tractor and 10-foot disk. With the costs for mob/demob included, average cost was \$278/ac or \$363/ hr. Under favorable river condition (flow less than 500 cfs) disking can be done at a rate of 1.5- 2 acres/ hour. SEE P18-008 BID TAB. The work will be procured through the Program's competitive selection process and work will be performed by lowest cost contractor that provides the best value to the Program.

Task: **PAW 6**

Line Item: LP-4

Tract No: 2014002, 2015002 & Agreement #11 (1008)

Description: Noxious Weed Control (675 ac)

Estimated Cost: \$9,000

Justification: Noxious weed spraying is applied by spot spraying from an ATV or UTV to 675 acres of Pawnee complex tracts annually. In 2018, actual noxious weed treatment cost was \$179/ hour for a total of \$8,959.00 or \$13/ac. The 2019 cost estimate is based on the 2018 expenditure for this task. SEE P18-001 BID TAB. The work will be procured through the Program's competitive selection process and work will be performed by lowest cost contractor(s) that provide the best value to the Program.

Task: **PAW 7**

Line Item: LP-4

Tract No: 2014002, 2015002 & Agreement #11 (1008)

Description: Fence & Road Maintenance

Estimated Cost: \$2,000

Justification: There are no identified fence or road maintenance issues. This task is included to cover issues that may arise in regards to fence or roads on Pawnee complex tracts. When/ if an issue arises, the work will be procured through the Program's competitive selection process and work will be performed by lowest cost contractor that provides the best value to the Program. Typical costs of a linear foot of standard 4 wire-barbed wire fence is \$2.10-2.90/ linear foot, fence repair \$0.50- 2.80/ linear foot depending on what is needed for repair and road maintenance with a road grader was \$100/ hr in 2015.

Fort Kearny Complex

Task: **FK 2**

Line Item: LP-2

Tract No: 2015001

Description: Disking if necessary to provide in-channel vegetation control. Approximately 83 acres.

Estimated Cost: \$23,075

Justification: In 2018, the average cost was \$242/ acre or \$300/hour with a Challenger tractor and 10-foot disk. With the costs for mob/demob included, average cost was \$278/ac or \$363/ hr. Under favorable river condition (flow less than 500 cfs) disking can be done at a rate of 1.5- 2 acres/ hour. SEE P18-008 BID TAB. The work will be procured through the Program's competitive selection process and work will be performed by lowest cost contractor that provides the best value to the Program.

Task: **FK 3**

Line Item: LP-2

Tract No: 2009001

Description: Annual electrical service fee for irrigation well used to supplement water to wetland

Estimated Cost: \$5,400

Justification: Costs are associated with charges for electricity. Irrigation well on the tract is typically turned on in late March and again in the first couple of weeks of October in order to have standing water in the wetlands ahead of the whooping crane migration. Costs are dependent on the amount of time the electric well is on and pumping. In the spring of 2017, the well ran for 3,093 hours of pumping for a total charge of \$5,400 or \$1.72/hour.

Task: **FK 4, 5, & 6,**

Line Item: LP-2

Tract No: 2008001 South (46 ac), 2012003 (77 ac), & 2015001(174 ac)

Description: Prescribed Burn

Estimated Cost: \$12,942

Justification: The Spring 2016-2018 Prescribed Fire Management Services RFP was advertised on the Program website and regional newspapers on or around January 15, 2016 and closed on February 19, 2016. Proposals were submitted from four NWCG qualified companies from Oklahoma, Washington, Texas and Nebraska. CHLOETA was chosen through this competitive selection process due to their cost, prior work for the Program, and proven track record, experienced crew, and equipment. CHLOETA's bid was \$43.59/acre.

SEE P16-002 BID TAB. The current 3-year contract with CHLOETA has expired. The EDO will submit a sole source justification to hire CHLOETA for the 2019 Rx fire season at rates quoted in 2016. Once the Program Extension is in place the EDO will solicit bids for a 3-year contract through the Program's competitive selection process.

Task: **FK 9**

Line Item: LP-4

Tract No: 2009004 & 2015001

Description: Annual electrical service fee at two livestock wells

Estimated Cost: \$600

Justification: Costs are associated with charges for electricity at two livestock wells on the tracts. Costs are estimated to be \$300/year for each of the wells.

Task: **FK 10**

Line Item: LP-4

Tract No: 2008001, 2009001, 2009004, 2010003, 2012003, & 2015001

Description: Noxious Weed Control

Estimated Cost: \$21,500

Justification: Noxious weed spraying is applied by spot spraying from an ATV or UTV to 2,013 acres of Fort Kearny complex tracts annually. In 2018, actual noxious weed treatment cost was \$101/ hour for a total of \$21,474.00 or \$11/ac. The 2019 cost estimate is based on the 2018 expenditure for this task. SEE P18-001 BID TAB. The work will be procured through the Program's competitive selection process and work will be performed by lowest cost contractor(s) that provide the best value to the Program.

Task: **FK 11**

Line Item: LP-4

Tract No: 2008001, 2009001, 2009004, 2010003, 2012003, & 2015001

Description: Fence & Road Maintenance

Estimated Cost: \$4,500

Justification: There are no identified fence or road maintenance issues. This task is included to cover issues that may arise in regards to fence or roads on Fort Kearny complex tracts. When/ if an issue arises, the work will be procured through the Program's competitive selection process and work will be performed by lowest cost contractor that provides the best value to the Program. Typical costs of

a linear foot of standard 4 wire-barbed wire fence is \$2.10-2.90/ linear foot, fence repair \$0.50- 2.80/ linear foot depending on what is needed for repair and road maintenance with a road grader was \$100/ hr in 2015.

Task: **FK 12**

Line Item: LP-4

Tract No: 2008001, 2009001, 2009004, 2010003, 2012003, & 2015001

Description: Mowing

Estimated Cost: \$1,000

Justification: Mowing is occasionally needed outside of the MBTA window on areas that are not being managed as bare-sand nesting areas. Mowing costs in 2018 were \$133.00/ hour which includes equipment, labor and mobilization. It is anticipated that 7.5 hours of mowing will be required on Fort Kearny complex tracts in 2019. The work will be procured through the Program's competitive selection process and work will be performed by lowest cost contractor that provides the best value to the Program.

Minden- Gibbon Complex

Task: **M-G 1**

Line Item: LP-2

Tract No: MGT Agreement # 09 Rowe Sanctuary

Description: Disking if necessary to provide in-channel vegetation control. Approximately 73 acres.

Estimated Cost: \$20,295

Justification: In 2018, the average cost was \$242/ acre or \$300/hour with a Challenger tractor and 10-foot disk. With the costs for mob/demob included, average cost was \$278/ac or \$363/ hr. Under favorable river condition (flow less than 500 cfs) disking can be done at a rate of 1.5- 2 acres/ hour. SEE P18-008 BID TAB. The work will be procured through the Program's competitive selection process and work will be performed by lowest cost contractor that provides the best value to the Program.

Clark Island Complex

Task: **CI 3**

Line Item: LP-2

Tract No: 2018001

Description: Construction of OCSW

Estimated Cost: \$1,800,000

Justification: Estimate based on conceptual design quantity of 360,000 CY of excavation at \$5.00/ CY. SEE P18-005 BID TAB. The work will be procured through the Program's competitive selection process and work will be performed by lowest cost contractor that provides the best value to the Program.

Task: **CI 4**

Line Item: LP-2

Tract No: 2018001

Description: Disking if necessary to provide in-channel vegetation control. Approximately 90 acres.

Estimated Cost: \$25,000

Justification: In 2018, the average cost was \$242/ acre or \$300/hour with a Challenger tractor and 10-foot disk. With the costs for mob/demob included, average cost was \$278/ac or \$363/ hr. Under favorable river condition (flow less than 500 cfs) disking can be done at a rate of 1.5- 2 acres/ hour. SEE P18-008 BID TAB. The work will be procured through the Program's competitive selection process and work will be performed by lowest cost contractor that provides the best value to the Program.

Task: **CI 5**

Line Item: LP-2

Tract No: 2018001

Description: Russian olive & tree pile removal

Estimated Cost: \$15,000

Justification: There are scattered Russian olives and other woody vegetation in the northern grassland of this tract. This project will be designed to selectively remove (grind aboveground) and treat woody vegetation and downed debris within the northern grassland area. Trees that are too big to be mulched will be placed in piles and burned and buried. The estimate is based on 60 hours at \$200/ hour plus herbicide costs and burn & bury costs. The work will be procured through the Program's competitive selection process and work will be performed by lowest cost contractor that provides the best value to the Program.

Task: **CI 8**

Line Item: LP-4

Tract No: 2018001

Description: Fence & Road Maintenance

Estimated Cost: \$10,000

Justification: North fence is in disrepair and portions may not be on property line. No fence exists along the river channel, east boundary, and around the in-holding. This task is included to cover issues that may arise in regards to fence or roads on Clark Island complex tracts. When/ if an issue arises, the work will be procured through the Program's competitive selection process and work will be performed by lowest cost contractor that provides the best value to the Program. Typical costs of a linear foot of standard 4 wire-barbed wire fence is \$2.10-2.90/ linear foot, fence repair \$0.50- 2.80/ linear foot depending on what is needed for repair and road maintenance with a road grader was \$100/ hr in 2015.

Task: **CI 9**
Line Item: LP-4
Tract No: 2018001
Description: Noxious Weed Control
Estimated Cost: \$4,500

Justification: Noxious weed spraying is applied by spot spraying from an ATV or UTV to 639 acres of Clark Island complex tracts annually. In 2018, actual noxious weed treatment cost was \$186/ hour for a total of \$4,479 or \$7/ac. The 2019 cost estimate is based on the 2018 expenditure for this task. SEE P18-001 BID TAB. The work will be procured through the Program's competitive selection process and work will be performed by lowest cost contractor(s) that provide the best value to the Program.

Task: **CI 10**
Line Item: LP-4
Tract No: 2018001
Description: Mowing
Estimated Cost: \$1,500

Justification: Mowing is occasionally needed outside of the MBTA window on areas that are not being managed as bare-sand nesting areas. Mowing costs in 2018 were \$133.00/ hour which includes equipment, labor and mobilization. It is anticipated that 10 hours of mowing will be required on Shoemaker Island complex tracts in 2019. The work will be procured through the Program's competitive selection process and work will be performed by lowest cost contractor that provides the best value to the Program.

Shoemaker Island Complex

Task: **SI 2**
Line Item: LP-2

Tract No: 2010004 & 2011001 west

Description: Disking if necessary to provide in-channel vegetation control. Approximately 75 acres.

Estimated Cost: \$20,850

Justification: In 2018, the average cost was \$242/ acre or \$300/hour with a Challenger tractor and 10-foot disk. With the costs for mob/demob included, average cost was \$278/ac or \$363/ hr. Under favorable river condition (flow less than 500 cfs) disking can be done at a rate of 1.5- 2 acres/ hour. SEE P18-008 BID TAB. The work will be procured through the Program's competitive selection process and work will be performed by lowest cost contractor that provides the best value to the Program.

Task: **SI 3**

Line Item: LP-2

Tract No: 2010004 (510 ac)

Description: Prescribed Burn

Estimated Cost: \$22,425

Justification: The Spring 2016-2018 Prescribed Fire Management Services RFP was advertised on the Program website and regional newspapers on or around January 15, 2016 and closed on February 19, 2016. Proposals were submitted from four NWCG qualified companies from Oklahoma, Washington, Texas and Nebraska. CHLOETA was chosen through this competitive selection process due to their cost, prior work for the Program, and proven track record, experienced crew, and equipment. CHLOETA's bid was \$43.59/acre. SEE P16-002 BID TAB. The current 3-year contract with CHLOETA has expired. The EDO will submit a sole source justification to hire CHLOETA for the 2019 Rx fire season at rates quoted in 2016. Once the Program Extension is in place the EDO will solicit bids for a 3-year contract through the Program's competitive selection process.

Task: **SI 6**

Line Item: LP-4

Tract No: 2010004 & 2011001west

Description: Fence & Road Maintenance

Estimated Cost: \$1,500

Justification: There are no identified fence or road maintenance issues. This task is included to cover issues that may arise in regards to fence or roads on Shoemaker Island complex tracts. When/ if an issue arises, the work will be procured through the Program's competitive selection process and work will be performed by lowest cost contractor that provides the best value to the Program.

Typical costs of a linear foot of standard 4 wire-barbed wire fence is \$2.10-2.90/ linear foot, fence repair \$0.50- 2.80/ linear foot depending on what is needed for repair and road maintenance with a road grader was \$100/ hr in 2015.

Task: **SI 7**

Line Item: LP-4

Tract No: 2010004 & 2011001west

Description: Noxious Weed Control

Estimated Cost: \$3,500

Justification: Noxious weed spraying is applied by spot spraying from an ATV or UTV to 1,758 acres of Shoemaker Island complex tracts annually. In 2018, actual noxious weed treatment cost was \$125/ hour for a total of \$2,072.00 or \$1.38/ac. Yellow Flag Iris control is included in estimate for 12 additional hours at \$125/hr. The 2019 cost estimate is based on the 2018 expenditure for this task. SEE P18-001 BID TAB. The work will be procured through the Program's competitive selection process and work will be performed by lowest cost contractor(s) that provide the best value to the Program.

Task: **SI 8**

Line Item: LP-4

Tract No: 2010004 & 2011001west

Description: Mowing

Estimated Cost: \$1,500

Justification: Mowing is occasionally needed outside of the MBTA window on areas that are not being managed as bare-sand nesting areas. Mowing costs in 2018 were \$133.00/ hour which includes equipment, labor and mobilization. It is anticipated that 10 hours of mowing will be required on Shoemaker Island complex tracts in 2019. The work will be procured through the Program's competitive selection process and work will be performed by lowest cost contractor that provides the best value to the Program.

Water Properties

Task: **WP-3**

Line Item: WP-4 (j)

Tract No: All

Description: Fence & Road Maintenance

Estimated Cost: \$10,000

Justification: There are no identified fence or road maintenance issues. This task is included to cover issues that may arise in regards to fence or roads on Water tracts. When/ if an issue arises, the work will be procured through the Program's competitive selection process and work will be performed by lowest cost contractor that provides the best value to the Program. Typical costs of a linear foot of standard 4 wire-barbed wire fence is \$2.10-2.90/ linear foot, fence repair \$0.50- 2.80/ linear foot depending on what is needed for repair and road maintenance with a road grader was \$100/ hr in 2015.

Task: **WP-4**

Line Item: WP-4 (j)

Tract No: All

Description: Noxious Weed Control

Estimated Cost: \$15,000

Justification: Noxious weed spraying is applied by spot spraying from an ATV or UTV annually. Noxious weed treatment cost was \$127/ hour for and it is estimated that 118 hours will be needed to cover all water tracts. SEE P18-001 BID TAB. The work will be procured through the Program's competitive selection process and work will be performed by lowest cost contractor(s) that provide the best value to the Program.

Task: **WP-5**

Line Item: WP-4 (j)

Tract No: All

Description: Mowing

Estimated Cost: \$2,000

Justification: Mowing is occasionally needed outside of the MBTA window on areas that are not being managed as bare-sand nesting areas. Mowing costs in 2018 were \$133.00/ hour which includes equipment, labor and mobilization. It is anticipated that 15 hours of mowing will be required on water tracts in 2019. The work will be procured through the Program's competitive selection process and work will be performed by lowest cost contractor that provides the best value to the Program.

Task: **WP-7**

Line Item: WP-4 (j)

Tract No: Tract W2016002

Description: Custom Farming Expenses.

Estimated Cost: \$25,000

Justification: The tract is being custom farmed by a local producer. The expenses for 2018 corn crop on the 72 acres were \$25,000 including harvest and insurance. The 2019 cost estimate is based on the 2018 expenditure for this task. See Exhibit B in the 2018 Custom Farming Agreement for Tract W201602 for Custom Farming Rates.



P16-002 - 2016-2018 SPRING PRESCRIBED FIRE MANAGEMENT SERVICES
PLATTE RIVER RECOVERY IMPLEMENTATION PROGRAM
BID TABULATION SCHEDULE
FEBRUARY 19, 2016 12:00 P.M.

All bids submitted are reflected on this bid tabulation sheet. However, the listing of a bid should not be construed as any indication that the Program accepts such bid. The Program will notify the successful bidder upon award of contract.

	CHLOETA-Oklahoma	Scholl-Washington	GFS- Texas	Lite Em Up- Nebraska
Executed Bidder's Bond (Y/N)	N/A	N/A	N/A	N/A
Addendum(s) Acknowledged (Y/N)	N/A	N/A	N/A	N/A
Contractor Pre-Qualified or Included Pre-Qualification Form (Y/N)	Y	Y	Y	Y

Bid Item No.	Description	Unit	Est. Qty.								
				Unit Price	Extended Total	Unit Price	Extended Total	Unit Price	Extended Total	Unit Price	Extended Total
Prescribed Fire Detail											
1	Mobilization	LS	1		\$5,391.00		\$ 11,530.00		\$ 11,543.00		\$ 500.00
2	Prescribed Fire Administration	LS	1		\$ 610.00		\$ 6,300.00		\$ 4,500.00		\$ 500.00
3	Prescribed Fire Implementation	AC	1,571	\$ 43.59	\$ 68,479.89	\$ 42.00	\$ 65,982.00	\$ 46.46	\$ 72,988.66	\$ 28.00	\$ 43,988.00
Total Bid Price (Items 1-3)				\$ 74,480.89		\$ 83,812.00		\$ 89,031.66		\$ 44,988.00	

Notes:



P17-011 - PAWNEE COMPLEX HABITAT ENHANCEMENT
PLATTE RIVER RECOVERY IMPLEMENTATION PROGRAM
BID TABULATION SCHEDULE
October 5, 2017 2:00 P.M.

All bids submitted are reflected on this bid tabulation sheet. However, the listing of a bid should not be construed as any indication that the Program accepts such bid. The Program will notify the successful bidder upon award of contract.

	Harders Dozer & Scraper	A & L Leveling	Blessing Constr.	Leising, Inc.
Executed Bidder's Bond (Y/N)	Y	Y	Y	Y
Addendum(s) Acknowledged (Y/N)	Y	Y	Y	Y
Contractor Pre-Qualified or Included Pre-Qualification Form (Y/N)	Y	Y	Y	Y

Bid Item No.	Description	Unit	Est. Qty.								
				Unit Price	Extended Total	Unit Price	Extended Total	Unit Price	Extended Total	Unit Price	Extended Total
CLEARING											
1	Mobilization and Demobilization	LS	1	\$ 7,645.00	\$ 7,645.00	\$ 2,270.00	\$ 2,270.00	\$ 5,000.00	\$ 5,000.00	\$ 2,600.00	\$ 2,600.00
2	Clear & Grub	AC	49	\$ 1,500.00	\$ 73,500.00	\$ 1,545.00	\$ 75,705.00	\$ 6,122.45	\$ 300,000.00	\$ 1,450.00	\$ 71,050.00
3	Overbank Disking	AC	7	\$ 400.00	\$ 2,800.00	\$ 214.29	\$ 1,500.00	\$ 1,428.57	\$ 10,000.00	\$ 178.57	\$ 1,250.00
Total Bid Price				\$ 83,945.00		\$ 79,475.00		\$ 315,000.00		\$ 74,900.00	

Notes:



P17-011 - PAWNEE COMPLEX HABITAT ENHANCEMENT
PLATTE RIVER RECOVERY IMPLEMENTATION PROGRAM
BID TABULATION SCHEDULE
October 5, 2017 2:00 P.M.

<i>All bids submitted are reflected on this bid tabulation sheet. However, the listing of a bid should not be construed as any indication that the Program accepts such bid. The Program will notify the successful bidder upon award of contract.</i>	Cook Constr.			
Executed Bidder's Bond (Y/N)	Y			
Addendum(s) Acknowledged (Y/N)	Y			
Contractor Pre-Qualified or Included Pre-Qualification Form (Y/N)	Y			

Bid Item No.	Description	Unit	Est. Qty.								
				Unit Price	Extended Total	Unit Price	Extended Total	Unit Price	Extended Total	Unit Price	Extended Total
CLEARING											
1	Mobilization and Demobilization	LS	1	\$ 2,000.00	\$ 2,000.00		\$ -		\$ -		\$ -
2	Clear & Grub	AC	49	\$ 875.00	\$ 42,875.00		\$ -		\$ -		\$ -
3	Overbank Disking	AC	7	\$ 400.00	\$ 2,800.00		\$ -		\$ -		\$ -
Total Bid Price				\$ 47,675.00		\$ -		\$ -		\$ -	

Notes:



P17-023 Tract W201601 Fence Construction
PLATTE RIVER RECOVERY IMPLEMENTATION PROGRAM
BID TABULATION SCHEDULE
25-Oct-17

All bids submitted are reflected on this bid tabulation sheet. However, the listing of a bid should not be construed as any indication that the Program accepts such bid. The Program will notify the successful bidder upon award of contract.

	CV Fencing	Diamond 9 Fencing		
Executed Bidder's Bond (Y/N)	n/a	n/a		
Addendum(s) Acknowledged (Y/N)	n/a	n/a		
Contractor Pre-Qualified or Included Pre-Qualification Form (Y/N)	yes	yes		

Bid Item No.	Description	Unit	Est. Qty.								
				Unit Price	Extended Total	Unit Price	Extended Total	Unit Price	Extended Total	Unit Price	Extended Total
1	Mobilization and Demobilization	LS	1	\$ 680.00	\$ 680.00	\$ 400.00	\$ 400.00		\$ -		\$ -
2	Fence Construction & Removal	LF	2,978	\$ 2.44	\$ 7,266.32	\$ 2.50	\$ 7,445.00		\$ -		\$ -
3	Wire Gate & Install	EA	2	\$ 150.00	\$ 300.00	\$ -	\$ -		\$ -		\$ -
4	12' Metal Gate & Install	EA	2	\$ 213.79	\$ 427.58	\$ 160.00	\$ 320.00		\$ -		\$ -
5	16' Metal Gate & Install	EA	1	\$ 254.74	\$ 254.74	\$ 220.00	\$ 220.00		\$ -		\$ -
Total Bid Price (Items 1-3)				\$ 8,928.64		\$ 8,385.00		\$ -		\$ -	

11/30/2017

11/30/2017

Notes:



P18-001 PRRIP Chemical Application Services RFB
PLATTE RIVER RECOVERY IMPLEMENTATION PROGRAM
BID TABULATION SCHEDULE
23-Feb-18

All bids submitted are reflected on this bid tabulation sheet. However, the listing of a bid should not be construed as any indication that the Program accepts such bid. The Program will notify the successful bidder upon award of contract.

	Dawson County Weed Control	Tim Root	Working Ecosystems	Nebraskaland Spraying	FyIn M Ent
Executed Bidder's Bond (Y/N)	n/a	n/a	n/a	n/a	n/a
Addendum(s) Acknowledged (Y/N)	n/a	n/a	n/a	n/a	n/a
Contractor Pre-Qualified or Included Pre-Qualification Form (Y/N)	Yes	Yes	Yes	Yes	Yes

Bid Item No.	Description	Unit	Est. Qty.										
				Unit Price		Unit Price		Unit Price		Unit Price		Unit Price	
1	Mobilization and Demobilization	LS	1										
	Plum Creek	LS	1					\$0					
	Cottonwood Ranch Complex	LS	1	\$0				\$0					
	Elm Creek Complex	LS	1					\$0		X		\$0	
	Pawnee Complex	LS	1					\$0		X		\$0	
	Ft. Kearny Complex	LS	1					\$0		X		\$0	
	Clark Island Complex	LS	1			\$400		\$0		\$850			
	Shoemaker Island Complex	LS	1			\$800		\$0		\$1,250			
	Bareground Sites West	LS	1					\$0		\$250			
	Bareground Sites East	LS	1			\$400		\$0		\$500			
2	Chemical Application- Labor	HR		included		included		included		included		included	
3	Chemical Application- Equipment	HR											
4	Chemical Application- Spray truck	HR		\$65				\$95		\$90			
5	Chemical Application - ATV	HR				\$98		\$85		\$90		\$65	
6	Chemical Application - UTV/ Argo	HR		\$55		\$165		\$100		\$90		\$75	
7	Chemical Application- Airboat	HR						\$150		\$175		\$175	
	Chemical Cost Markup			yes	26%	no	0%	yes	15%	no	0%	no	0%

Total Bid Price (Items 1-7)													
gps				no		yes		yes		yes		???	

Notes:



**P18-005: Cottonwood Ranch Broad-Scale Recharge
PLATTE RIVER RECOVERY IMPLEMENTATION PROGRAM
BID TABULATION SCHEDULE
September 18, 2016 1:00 P.M. CT**

All bids submitted are reflected on this bid tabulation sheet. However, the listing of a bid should not be construed as any indication that the Program accepts such bid. The Program will notify the successful bidder upon award of contract.

	Midlands	BSB Construction	Van Kirk Bros	Pruss	Myers Construction
Executed Bidder's Bond (Y/N)	Y	Y	Y	Y	Y
Addendum(s) Acknowledged (Y/N)	Y	Y	Y	Y	Y
Contractor Pre-Qualified or Included Pre-Qualification Form (Y/N)	Y	Y	Y	Y	Y

Bid Item No.	Description	Unit	Est. Qty.										
				Unit Price	Extended Total	Unit Price	Extended Total	Unit Price	Extended Total	Unit Price	Extended Total	Unit Price	Extended Total
1	Mobilization and Demobilization	LS	1	\$ 200,000.00	\$ 200,000.00	\$ 161,000.00	\$ 161,000.00	\$ 875,715.00	\$ 875,715.00	\$ 779,000.00	\$ 779,000.00	\$ 30,000.00	\$ 30,000.00
2	Erosion and Sediment Control	LS	1	\$ 230,000.00	\$ 230,000.00	\$ 100,000.00	\$ 100,000.00	\$ 119,500.00	\$ 119,500.00	\$ 80,000.00	\$ 80,000.00	\$ 73,920.00	\$ 73,920.00
3	Clear and Grubbing	ACRE	5.1	\$ 9,600.00	\$ 48,960.00	\$ 14,225.00	\$ 72,547.50	\$ 11,280.00	\$ 57,528.00	\$ 10,000.00	\$ 51,000.00	\$ 4,500.00	\$ 22,950.00
4	Strip, Stockpile and Replace Topsoil	CY	72,260	\$ 4.42	\$ 319,389.20	\$ 2.75	\$ 198,715.00	\$ 5.20	\$ 375,752.00	\$ 7.00	\$ 505,820.00	\$ 3.40	\$ 245,684.00
5	Berm Embankment	CY	174,203	\$ 5.96	\$ 1,038,249.88	\$ 7.00	\$ 1,219,421.00	\$ 7.01	\$ 1,221,163.03	\$ 9.00	\$ 1,567,827.00	\$ 5.00	\$ 871,015.00
6	Seepage Berm Embankment	CY	12,820	\$ 9.69	\$ 124,225.80	\$ 5.75	\$ 73,715.00	\$ 11.40	\$ 146,148.00	\$ 13.00	\$ 166,660.00	\$ 6.50	\$ 83,330.00
7	Toe Drain System	LS	1	\$ 140,000.00	\$ 140,000.00	\$ 134,000.00	\$ 134,000.00	\$ 501,510.00	\$ 501,510.00	\$ 510,250.00	\$ 510,250.00	\$ 109,627.00	\$ 109,627.00
8	Water Level Flume Control Structures	EA	7	\$ 190,000.00	\$ 1,330,000.00	\$ 272,500.00	\$ 1,907,500.00	\$ 243,696.00	\$ 1,705,872.00	\$ 222,420.00	\$ 1,556,940.00	\$ 111,485.00	\$ 780,395.00
9	In-line Water Level Control	EA	1	\$ 15,000.00	\$ 15,000.00	\$ 9,250.00	\$ 9,250.00	\$ 255,020.00	\$ 255,020.00	\$ 261,000.00	\$ 261,000.00	\$ 304,454.00	\$ 304,454.00
10	Riprap	CY	4,523	\$ 170.00	\$ 768,910.00	\$ 147.00	\$ 664,881.00	\$ 255.00	\$ 1,153,365.00	\$ 190.00	\$ 859,370.00	\$ 63.00	\$ 284,949.00
11	Crushed Rock Surfacing	CY	1,150	\$ 90.00	\$ 103,500.00	\$ 131.00	\$ 150,650.00	\$ 92.00	\$ 105,800.00	\$ 98.00	\$ 112,700.00	\$ 56.00	\$ 64,400.00
12	Road Ditch Drainage Controls	LS	1	\$ 35,000.00	\$ 35,000.00	\$ 28,750.00	\$ 28,750.00	\$ 29,875.00	\$ 29,875.00	\$ 30,125.00	\$ 30,125.00	\$ 37,240.00	\$ 37,240.00
13	Internal Drain Culverts	LS	1	\$ 20,000.00	\$ 20,000.00	\$ 22,200.00	\$ 22,200.00	\$ 25,730.00	\$ 25,730.00	\$ 25,800.00	\$ 25,800.00	\$ 60,654.00	\$ 60,654.00
14	Seeding	ACRE	196	\$ 1,810.00	\$ 354,760.00	\$ 2,695.00	\$ 528,220.00	\$ 3,150.00	\$ 617,400.00	\$ 1,660.00	\$ 325,360.00	\$ 980.00	\$ 192,080.00
15	Water Supply Pipeline System	LS	1	\$ 1,116,000.00	\$ 1,116,000.00	\$ 1,548,115.00	\$ 1,548,115.00	\$ 1,892,512.00	\$ 1,892,512.00	\$ 1,945,500.00	\$ 1,945,500.00	\$ 1,115,274.00	\$ 1,115,274.00
Total Bid Price				\$ 5,843,994.88		\$ 6,818,964.50		\$ 9,082,890.03		\$ 8,777,352.00		\$ 4,275,972.00	

Notes:



P18-008 - IN-CHANNEL DISKING HABITAT ENHANCEMENT PROJECT
PLATTE RIVER RECOVERY IMPLEMENTATION PROGRAM
BID TABULATION SCHEDULE

All bids submitted are reflected on this bid tbulation sheet. However, the listing of a bid should not be construed as any indication that the Program accepts such bid. The Program will notify the successful bidder upon award of contract.				Cook Construction		A & L Leveling		Sandoz Construction			
Executed Bidder's Bond (Y/N)				-		-					
Addendum(s) Acknowledged (Y/N)				-		-					
Contractor Pre-Qualified or Included Pre-Qualification Form (Y/N)				Y		Y		Y			
Bid Item No.	Description	Unit	Est. Qty.								
				Unit Price	Extended Total	Unit Price	Extended Total	Unit Price	Extended Total	Unit Price	Extended Total
CLEARING											
1	Total Mobilization and Demobilization	LS	1		\$ -		\$ -				\$ -
2	10 ft disk	Hour		\$ 300.00	\$ -	\$ 300.00	\$ -	\$ 200.00			\$ -
3	16 ft disk	Hour		\$ 300.00	\$ -		\$ -	\$ 300.00			\$ -
4	20 ft disk	Hour		\$ 325.00	\$ -		\$ -	\$ 400.00			\$ -
Total Bid Price (Items 1-4)				\$ -		\$ -		\$ -		\$ -	

Notes:

Pawnee, Elm Creek, CWR Rowe Sancturay Shoemaker

PULLED QUOTE PRIOR TO AWARD

MAR 19 2018

CUSTOM FARMING AGREEMENT

This Custom Farming Agreement is made the 27th day of February, 2018, between
Platte River Recovery Implementation Foundation,
Trustee, hereinafter referred to as OWNER, and
Roger Benson, hereinafter referred to as CONTRACTOR.

The parties to this CUSTOM FARMING AGREEMENT acknowledge it is not to be construed as a lease. No tenancy is expressed or implied to the CONTRACTOR. This CUSTOM FARMING AGREEMENT will terminate on the date agreed to and is not subject to any statutory right of notice of termination.

The parties to this CUSTOM FARMING AGREEMENT understand and agree this is not a partnership agreement and the parties have no intention or expectation this relationship will be considered a partnership. The parties further agree that neither party shall mortgage or otherwise encumber any jointly owned or co-owned property, nor pledge the credit of the other party hereto for any purpose whatsoever without the prior written consent of the other party.

SECTION I. DESCRIPTION OF THE FARM

This CUSTOM FARMING AGREEMENT covers the following described property:

Those cropland acres located in parts of Lots B,C & D in Section Seven (7), Township Eight (8) North, Range Eighteen (18) West of the 6th P.M.

located in **Buffalo** County, **Nebraska**, containing **72 acres**, more or less as shown more particularly on the attached Exhibit "A" that is made a part hereof by this reference and subject to all easements now existing or which the OWNER may grant in the future.

SECTION II. LENGTH OF AGREEMENT

The term of the CUSTOM FARMING AGREEMENT shall be for the crop year beginning **January 1, 2018** and ending **December 31, 2018**. This Agreement, unless renewed or extended by mutual agreement in writing, shall terminate without notice on **December 31, 2018**.

SECTION III. RATES AND PAYMENT

The CONTRACTOR agrees to perform all services, as directed by the OWNER in a timely manner, utilizing good crop production practices at the rates of payment specified in Exhibit B. Rates for services requested by the OWNER, but not listed in EXHIBIT B, must be mutually agreed to in writing prior to performance of the service. The OWNER shall not be liable for payment of services not listed in EXHIBIT B, without prior written agreement on rates.

The CONTRACTOR will submit an itemized statement by July 5th to the OWNER for services rendered from January 1 through June 30 of the current crop year. The OWNER agrees to pay for the services rendered from January 1 through June 30, by August 15, 2018. CONTRACTOR will submit an itemized statement by November 15, 2018 to the OWNER for services rendered from July 1 through the completion of harvest. OWNER agrees to pay for the services rendered from July 1 through the completion of harvest by December 31, 2018, **unless owner and contractor agree in writing to an alternative pay date**. In the event harvest is not completed by November 15, 2018, the CONTRACTOR shall submit an itemized statement for such services performed prior to that time. Upon completion of harvest, at a date later than November 15, the CONTRACTOR shall provide an itemized statement of all previously unreported services, which shall be paid by OWNER within 45 days of receipt, **unless owner and contractor agree in writing to an alternative pay date**.

SECTION IV. OPERATING COVENANTS

CONTRACTOR agrees to perform, as an INDEPENDENT CONTRACTOR, various operations as agreed upon in advance with the OWNER. Such operations are to be performed on a timely schedule to achieve optimum crop production consistent with the overall land management goals for the property. The CONTRACTOR agrees he or she will:

- A. Cultivate and otherwise operate the property in a reasonable manner and in accordance with generally recognized and approved agricultural practices;
- B. When so directed by the OWNER, farm on the contour, use minimum tillage, residue management, or no-till agricultural practices;
- C. Operate the property in conformity with appropriate soil and water conservation practices, and in such a way as to maintain and when possible, enhance soil productivity;
- D. Operate the property in compliance with all applicable conservation plans or programs, including but not limited to those subject to the jurisdiction of the USDA and its related agencies;
- E. Supply all labor and equipment consistent with modern methods of crop production;
- F. Notify the OWNER promptly of the date and approximate time each operation he or she is authorized to perform is completed; and
- G. Produce evidence of payment of all bills for material and labor used in performance of this agreement.

The OWNER'S liability for the costs of work performed is limited to payment for the rates listed in **EXHIBIT B** and for services not listed in **EXHIBIT B**, to the rates agreed to in writing by the parties.

SECTION V. TERMINATION, CANCELLATION, ASSIGNMENT, AND DEFAULT

The OWNER may terminate this Agreement at any time, if the work is not performed as required herein, unless an Act of God interfered with the performance. The OWNER shall be the sole judge of what constitutes sufficient ground for termination.

This Agreement may be canceled or assigned by the OWNER at any time. In the event of cancellation or termination, this Agreement becomes null and void and the CONTRACTOR will be fully compensated for all operations completed prior to the time of cancellation or termination, if the services have been performed as required by this Agreement. In the event of assignment by the OWNER, the CONTRACTOR agrees to perform for the Assignee the remaining portion of the Agreement according to the terms agreed to herein.

The CONTRACTOR may not assign this Agreement to any other person without the prior written consent of the OWNER.

In the event of default by the CONTRACTOR, resulting in the OWNER having to employ an attorney for the purpose of defending or enforcing any provision of this Agreement, the CONTRACTOR agrees to pay the OWNER reasonable attorney's fees and expenses, upon written demand.

SECTION VI. CONTRACTOR HAS NO INTEREST IN CROPS

The CONTRACTOR shall have no ownership interest in any crops or crop residue grown on the property unless so agreed in writing prior to commencement of services under this agreement.

The CONTRACTOR agrees the OWNER is the sole owner of any government program payments or benefits received for the property covered under this agreement.

SECTION VII. INDEMNIFICATION

The CONTRACTOR shall indemnify, defend, and hold harmless the OWNER from all costs, losses, liabilities, claims, penalties, or expenses (including reasonable attorney's fees), imposed upon, incurred by or asserted against the OWNER by reason of:

- A. Any failure on the part of the CONTRACTOR to perform or comply with any terms of this Agreement;
- B. Any enforcement or remedial action taken by the OWNER in the event of a default or failure to perform or comply with the terms of this Agreement by the CONTRACTOR; or
- C. Any litigation, negotiation, or other transaction or legal proceeding in which the OWNER becomes involved or concerned (without the OWNER'S fault) in relation to this Agreement, the property described herein, or the use or occupancy of the property by the CONTRACTOR.

SECTION VIII. INSURANCE

The CONTRACTOR shall carry the following types and minimum coverage's of insurance:

- A. Worker's Compensation Insurance (if applicable)
- B. Comprehensive General Liability Insurance with respect to the CONTRACTOR'S use and occupancy of the property, with limits of not less than **\$300,000.00** for bodily injury liability for each occurrence;
- C. Automobile Liability Insurance on all owned, non-owned, hired or leased automotive equipment used in conjunction with the performance of this agreement, in amounts not less than **\$300,000.00** for bodily injury liability and **\$600,000.00** for property damage liability.

As proof of compliance with this section, the CONTRACTOR shall submit certificates of insurance to the OWNER on an annual basis at the beginning of each crop year.

SECTION IX. INDEPENDENT CONTRACTOR

The CONTRACTOR agrees he or she is an independent contractor and assumes full liability for all operations the CONTRACTOR, the CONTRACTOR'S family, or the CONTRACTOR'S employees perform on the property. If the CONTRACTOR employs other independent contractors to perform any work on the property or to conduct any part of the farming operation, the CONTRACTOR shall supervise the work performed by such other independent contractors and assure the OWNER that each independent contractor maintains in full force and effect, at the independent contractor's cost and expense, the same insurance coverages as required for the CONTRACTOR under SECTION VIII. The CONTRACTOR agrees to provide lien waivers from all subcontractors, if requested by the OWNER.

SECTION X. ENVIRONMENTAL PROVISIONS

The CONTRACTOR warrants and represents he or she:

- A. Has a sound working knowledge of the soil and water conservation practices to be used on the property in the performance of this Agreement;
- B. Has a sound working knowledge of the federal, state, and local environmental laws and regulations relevant to the performance of the Agreement;
- C. Will operate the farm in strict conformity with the provisions of applicable environmental laws and regulations and will apply the appropriate soil and water conservation practices;
- D. Will handle, use, and dispose of all hazardous and toxic materials as required by law;
- E. Will not store any agricultural chemicals on the property and will transport, apply and dispose of all agricultural chemicals as required by law, including the acquisition of any required pesticide applicators license, and the maintenance of all pesticide application records as required by state or federal law; Will notify the OWNER immediately of any conditions on the property that may not be in compliance with applicable laws or regulations;
- F. Will upon request of the OWNER complete and return an environmental questionnaire;
- G. Will indemnify, defend, and hold harmless, the OWNER, against any loss or damages arising by reason of the CONTRACTOR'S failure to comply with the environmental and conservation compliance provisions of the AGREEMENT; and
- H. Agrees that the indemnification agreements contained herein will survive the termination or cancellation of the Agreement.

SECTION XI. VIOLATION OF AGREEMENT

If the CONTRACTOR fails to perform any provisions contained in the AGREEMENT, then at the option of the OWNER, this Agreement may be treated as being null and void, and the OWNER, or his or her legal representative shall have the right to take control of the property and complete the necessary farming practices.

SECTION XII. OTHER PROVISIONS

It is further understood that both Parties have read the terms and provisions of the Agreement and have agreed to abide by the terms and provisions herein.

IN WITNESS WHEREOF, we affix our signatures this 27th day of February.

CONTRACTOR

Roger Benson
SS# _____

OWNER

Signature: AM

Company Name and Address

Platte River Recovery Implementation Foundation,
Trustee

P.O. Box 83107

Lincoln, NE 68501

Mailing Address & Phone Numbers

Roger Benson

11287 747 Rd.

Elm Creek, NE 68836

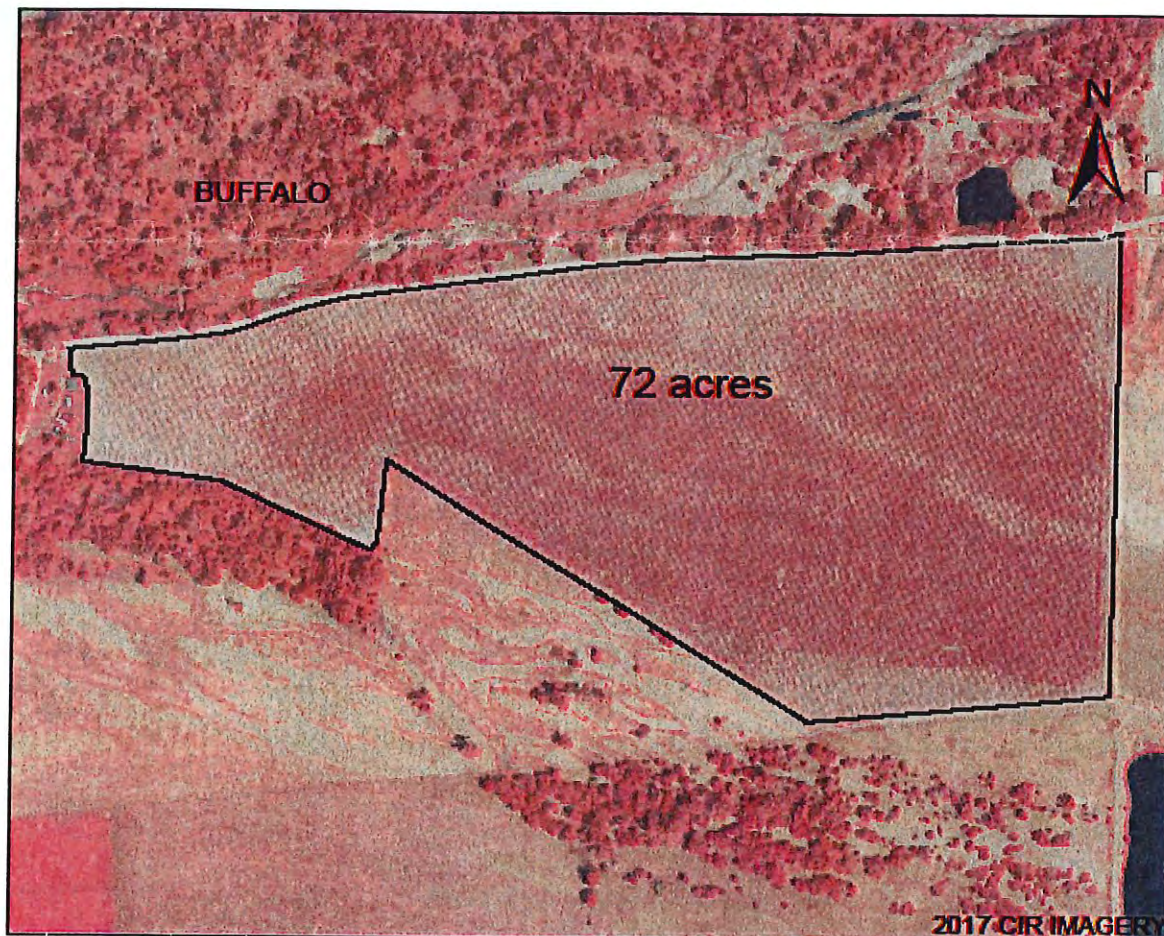
Contractor's Pesticide Applicator's

License Number NEB 039308

Expiration Date 4/15/2020

Exhibit A

Parts of Section 7 T 08N R 18W in Buffalo County, NE



FLATTER RIVER
RECOVERY IMPLEMENTATION PROGRAM

Legend

Past_Name

☐ Lindstrum_Dry_Crop

2018

Date: 01/18/2018

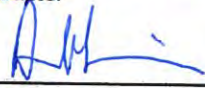
By: TRT

W2016002

Exhibit B
Platte River Recovery Implementation Foundation, Trustee
2018 Custom Rates

	Rate per acre	
Vertical Till	\$ 13.00	
Subsoil	\$ 15.00	
Disk	\$ 15.00	
NH3	\$ 12.00	
Dry Fertilizer, Spreading	\$ 6.00	
Stalks	\$ 7.50	
Plant-beans	\$ 16.00	
Plant-corn	\$ 13.00	
Field Cultivate/Soil Finishing	\$ 11.00	
Spray	\$ 6.50	
Combine-Corn	\$ 30.00	
Combine-Beans	\$ 30.00	
Grain Cart (Corn & Beans)	\$ 0.05 /bushel	
(Use the lower of the costs)		or
Hauling	\$ 6.00 /acre	
Mowing	\$ 0.10 /bushel	
Spray ditches	\$ 50.00 /hour	
Misc Labor	\$ 100.00 /hour	
2018 Corn acres	\$ 20.00 /hour	
2018 Bean acres	72	
	0	


 Contractor


 Owner

CUSTOM FARMING AGREEMENT

This Custom Farming Agreement is made the 14 day of March, 2018, between
Platte River Recovery Implementation Foundation,
Trustee, hereinafter referred to as OWNER, and
Rick Lundy, hereinafter referred to as CONTRACTOR.

The parties to this CUSTOM FARMING AGREEMENT acknowledge it is not to be construed as a lease. No tenancy is expressed or implied to the CONTRACTOR. This CUSTOM FARMING AGREEMENT will terminate on the date agreed to and is not subject to any statutory right of notice of termination.

The parties to this CUSTOM FARMING AGREEMENT understand and agree this is not a partnership agreement and the parties have no intention or expectation this relationship will be considered a partnership. The parties further agree that neither party shall mortgage or otherwise encumber any jointly owned or co-owned property, nor pledge the credit of the other party hereto for any purpose whatsoever without the prior written consent of the other party.

SECTION I. DESCRIPTION OF THE FARM

This CUSTOM FARMING AGREEMENT covers the following described property:

Those cropland acres located in part of the East Half of the Southwest Quarter (E2, SW4) of Section Thirty Two (32), Township Nine (9) North, Range Nineteen (19) West of the 6th P.M.

located in **Dawson County, Nebraska**, containing **62 acres**, more or less as shown more particularly on the attached Exhibit "A" that is made a part hereof by this reference and subject to all easements now existing or which the OWNER may grant in the future.

SECTION II. LENGTH OF AGREEMENT

The term of the CUSTOM FARMING AGREEMENT shall be for the crop year beginning **January 1, 2018** and ending **December 31, 2018**. This Agreement, unless renewed or extended by mutual agreement in writing, shall terminate without notice on **December 31, 2018**.

SECTION III. RATES AND PAYMENT

The CONTRACTOR agrees to perform all services, as directed by the OWNER in a timely manner, utilizing good crop production practices at the rates of payment specified in Exhibit B. Rates for services requested by the OWNER, but not listed in EXHIBIT B, must be mutually agreed to in writing prior to performance of the service. The OWNER shall not be liable for payment of services not listed in EXHIBIT B, without prior agreement on rates.

The CONTRACTOR will submit an itemized statement by July 5th to the OWNER for services rendered from January 1 through June 30 of the current crop year. The OWNER agrees to pay for the services rendered from January 1 through June 30, by August 15, 2018. CONTRACTOR will submit an itemized statement by November 15, 2018 to the OWNER for services rendered from July 1 through the completion of harvest. OWNER agrees to pay for the services rendered from July 1 through the completion of harvest by December 31, 2018, **unless owner and contractor agree in writing to an alternative pay date**. In the event harvest is not completed by November 15, 2018, the CONTRACTOR shall submit an itemized statement for such services performed prior to that time. Upon completion of harvest, at a date later than November 15, the CONTRACTOR shall provide an itemized statement of all previously unreported services, which shall be paid by OWNER within 45 days of receipt, **unless owner and contractor agree in writing to an alternative pay date**.

SECTION IV. OPERATING COVENANTS

CONTRACTOR agrees to perform, as an INDEPENDENT CONTRACTOR, various operations as agreed upon in advance with the OWNER. Such operations are to be performed on a timely schedule to achieve optimum crop production consistent with the overall land management goals for the property. The CONTRACTOR agrees he or she will:

- A. Cultivate and otherwise operate the property in a reasonable manner and in accordance with generally recognized and approved agricultural practices;
- B. When so directed by the OWNER, farm on the contour, use minimum tillage, residue management, or no-till agricultural practices;
- C. Operate the property in conformity with appropriate soil and water conservation practices, and in such a way as to maintain and when possible, enhance soil productivity;
- D. Operate the property in compliance with all applicable conservation plans or programs, including but not limited to those subject to the jurisdiction of the USDA and its related agencies;
- E. Supply all labor and equipment consistent with modern methods of crop production;
- F. Notify the OWNER promptly of the date and approximate time each operation he or she is authorized to perform is completed; and
- G. Produce evidence of payment of all bills for material and labor used in performance of this agreement.

The OWNER'S liability for the costs of work performed is limited to payment for the rates listed in **EXHIBIT B** and for services not listed in **EXHIBIT B**, to the rates agreed to in writing by the parties.

SECTION V. TERMINATION, CANCELLATION, ASSIGNMENT, AND DEFAULT

The OWNER may terminate this Agreement at any time, if the work is not performed as required herein, unless an Act of God interfered with the performance. The OWNER shall be the sole judge of what constitutes sufficient ground for termination.

This Agreement may be canceled or assigned by the OWNER at any time. In the event of cancellation or termination, this Agreement becomes null and void and the CONTRACTOR will be fully compensated for all operations completed prior to the time of cancellation or termination, if the services have been performed as required by this Agreement. In the event of assignment by the OWNER, the CONTRACTOR agrees to perform for the Assignee the remaining portion of the Agreement according to the terms agreed to herein.

The CONTRACTOR may not assign this Agreement to any other person without the prior written consent of the OWNER.

In the event of default by the CONTRACTOR, resulting in the OWNER having to employ an attorney for the purpose of defending or enforcing any provision of this Agreement, the CONTRACTOR agrees to pay the OWNER reasonable attorney's fees and expenses, upon written demand.

SECTION VI. CONTRACTOR HAS NO INTEREST IN CROPS

The CONTRACTOR shall have no ownership interest in any crops or crop residue grown on the property unless so agreed in writing prior to commencement of services under this agreement.

The CONTRACTOR agrees the OWNER is the sole owner of any government program payments or benefits received for the property covered under this agreement.

SECTION VII. INDEMNIFICATION

The CONTRACTOR shall indemnify, defend, and hold harmless the OWNER from all costs, losses, liabilities, claims, penalties, or expenses (including reasonable attorney's fees), imposed upon, incurred by or asserted against the OWNER by reason of:

- A. Any failure on the part of the CONTRACTOR to perform or comply with any terms of this Agreement;
- B. Any enforcement or remedial action taken by the OWNER in the event of a default or failure to perform or comply with the terms of this Agreement by the CONTRACTOR; or
- C. Any litigation, negotiation, or other transaction or legal proceeding in which the OWNER becomes involved or concerned (without the OWNER'S fault) in relation to this Agreement, the property described herein, or the use or occupancy of the property by the CONTRACTOR.

SECTION VIII. INSURANCE

The CONTRACTOR shall carry the following types and minimum coverage's of insurance:

- A. Worker's Compensation Insurance (if applicable)
- B. Comprehensive General Liability Insurance with respect to the CONTRACTOR'S use and occupancy of the property, with limits of not less than **\$300,000.00** for bodily injury liability for each occurrence;
- C. Automobile Liability Insurance on all owned, non-owned, hired or leased automotive equipment used in conjunction with the performance of this agreement, in amounts not less than **\$300,000.00** for bodily injury liability and **\$600,000.00** for property damage liability.

As proof of compliance with this section, the CONTRACTOR shall submit certificates of insurance to the OWNER on an annual basis at the beginning of each crop year.

SECTION IX. INDEPENDENT CONTRACTOR

The CONTRACTOR agrees he or she is an independent contractor and assumes full liability for all operations the CONTRACTOR, the CONTRACTOR'S family, or the CONTRACTOR'S employees perform on the property. If the CONTRACTOR employs other independent contractors to perform any work on the property or to conduct any part of the farming operation, the CONTRACTOR shall supervise the work performed by such other independent contractors and assure the OWNER that each independent contractor maintains in full force and effect, at the independent contractor's cost and expense, the same insurance coverages as required for the CONTRACTOR under SECTION VIII. The CONTRACTOR agrees to provide lien waivers from all subcontractors, if requested by the OWNER.

SECTION X. ENVIRONMENTAL PROVISIONS

The CONTRACTOR warrants and represents he or she:

- A. Has a sound working knowledge of the soil and water conservation practices to be used on the property in the performance of this Agreement;
- B. Has a sound working knowledge of the federal, state, and local environmental laws and regulations relevant to the performance of the Agreement;
- C. Will operate the farm in strict conformity with the provisions of applicable environmental laws and regulations and will apply the appropriate soil and water conservation practices;
- D. Will handle, use, and dispose of all hazardous and toxic materials as required by law;
- E. Will not store any agricultural chemicals on the property and will transport, apply and dispose of all agricultural chemicals as required by law, including the acquisition of any required pesticide applicators license, and the maintenance of all pesticide application records as required by state or federal law; Will notify the OWNER immediately of any conditions on the property that may not be in compliance with applicable laws or regulations;
- F. Will upon request of the OWNER complete and return an environmental questionnaire;
- G. Will indemnify, defend, and hold harmless, the OWNER, against any loss or damages arising by reason of the CONTRACTOR'S failure to comply with the environmental and conservation compliance provisions of the AGREEMENT; and
- H. Agrees that the indemnification agreements contained herein will survive the termination or cancellation of the Agreement.

SECTION XI. VIOLATION OF AGREEMENT

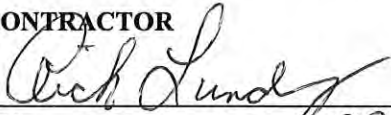
If the CONTRACTOR fails to perform any provisions contained in the AGREEMENT, then at the option of the OWNER, this Agreement may be treated as being null and void, and the OWNER, or his or her legal representative shall have the right to take control of the property and complete the necessary farming practices.

SECTION XII. OTHER PROVISIONS

It is further understood that both Parties have read the terms and provisions of the Agreement and have agreed to abide by the terms and provisions herein.


IN WITNESS WHEREOF, we affix our signatures this 14 day of March.

CONTRACTOR



SS# 505-78-9859

OWNER

Signature: 

Company Name and Address

**Platte River Recovery Implementation Foundation,
Trustee**

P.O. Box 83107

Lincoln, NE 68501

Mailing Address & Phone Numbers

Rick Lundy

10337 743 Road

Bertrand, NE 68927-3568

308-325-0475

Contractor's Pesticide Applicator's

License Number **NEB 106612**

Expiration Date **4-15-2020**





Exhibit A

Part of W 1/2, SW 1/4 of Section 32 T 09N R 19 W
in Dawson County, NE



Legend

Past_Name

-  Leih-Dry Cropland
-  NO CROPPING AREA
-  Underground Pipe Outlet
-  Underground Pipe

2018

Date: 01/18/2018

By: TRT

Tract 2013001

Exhibit B
Platte River Recovery Implementation Foundation, Trustee
2018 Custom Rates

	Rate per acre	
Vertical Till	\$ 13.00	
Subsoil	\$ 15.00	
Disk	\$ 15.00	
NH3	\$ 12.00	
Dry Fertilizer, Spreading	\$ 6.00	
Stalks	\$ 7.50	
Plant-beans	\$ 16.00	
Plant-corn	\$ 13.00	
Field Cultivate/Soil Finishing	\$ 11.00	
Spray	\$ 6.50	
Combine-Corn	\$ 30.00	
Combine-Beans	\$ 30.00	
Grain Cart (Corn & Beans)	\$ 0.05 /bushel	
(Use the lower of the costs)	or \$ 6.00 /acre	
Hauling	\$ 0.10 /bushel	
Mowing	\$ 50.00 /hour	
Spray ditches	\$ 100.00 /hour	
Misc Labor	\$ 20.00 /hour	
2018 Corn acres	62	
2018 Bean acres	0	

Contractor

Owner