

2024 Land Budget Expenditure Overview

Platte River Recovery Implementation Program

2/3/2025

Land Budget Overview By Budget Line Item

Budget Line Item	Description	Estimated Expenditure	Actual Expenditure*
LP-2	Adaptive Management Species Habitat Actions	\$361,831	\$184,455
LP-3	New Land Acquisitions, LHIE Fees, & Property Taxes	\$853,000	\$2,688,988
LP-4	Property Maintenance & Agricultural Operations	\$357,900	\$234,445
LP-6	Land Plan Special Advisors	\$25,000	\$21,639
LP-7	Public Access Management	\$40,000	\$40,000
	Total	\$1,637,731	\$3,169,527
WPLW-1	Property Taxes & Maintenance for Water Properties	\$20,600	\$0

Budget Overview By Complex

Complex	Estimated Expenditure	Actual Expenditure	Estimated Income	Actual Income
Non-Complex Tracts	\$75,774	\$56,041	\$20,300	\$29,163
Plum Creek "Complex"	\$75,883	\$22,797	\$6,500	\$7,095
Cottonwood Ranch Complex	\$59,203	\$18,156	\$23,645	\$12,213
Elm Creek Complex	\$46,969	\$26,182	\$15,345	\$16,710
Pawnee Complex	\$25,000	\$9,368	\$4,150	\$3,823
Fort Kearny Complex	\$147,522	\$100,815	\$40,650	\$37,825
Minden-Gibbon Complex	\$15,000	\$18,860	\$0	\$0
Clark Island Complex	\$80,021	\$108,736	\$41,500	\$36,505
Shoemaker Island Complex	\$43,359	\$15,311	\$43,000	\$24,705
Chapman Complex	\$151,000	\$42,634	\$43,500	\$46,250
Water tracts	\$20,600	\$0	\$10,500	\$11,230
Total	\$740,331	\$418,900	\$249,090	\$225,518

Budget Priority Areas by Budget Line Item

LP-2 – Adaptive Management Species Habitat Actions: Species habitat priorities are focused on creation and maintenance of suitable complex and non-complex habitat for Program target species. Includes Habitat Enhancement at Tract 2020002 &

LP-3 – New Land Acquisitions: Land acquisition priorities include identification and acquisition of lands for construction of an additional 60 acres of off-channel sand and water habitat for least tern and piping plover nesting habitat and identification and acquisition of lands that could count towards the First Increment Extension habitat land "plus up" of 1,500 acres.

LP-4 – Property Maintenance & Agricultural Operations: Priorities include maintenance of basic land infrastructure such as facilities, roads, and fences as well as fulfilling basic ownership obligations like noxious weed control and ROW mowing.

LP-6 – Land Plan Special Advisors: Priorities for special advisors include administration of agricultural leases and associated FSA obligations, crop management and marketing, and assistance in cropland conversions.

LP-7 – Public Access Management: Nebraska Game and Parks Commission will manage public access to Program lands.

WPLW-1 – Property Maintenance for Water Properties: Priorities include maintenance of basic land infrastructure such as facilities, roads, and fences as well as fulfilling basic ownership obligations like noxious weed control and ROW mowing.

Property Identification Key:

2008001 – PRRIP Wyoming Property
2008002 - NPPD Cottonwood Ranch
2009001 – PRRIP Fox Tract
2009002 – PRRIP Bartels Tract
2009003 - PRRIP Dyer Tract
2009004 – PRRIP Hostetler Tract
2009005 – PRRIP McCormick Tract
2009006 - PRRIP Stall Tract
2009007 - PRRIP Cook Tract
2009008 - PRRIP Broadfoot Newark Tract
2010001 - PRRIP Morse Tract
2010002 - Broadfoot Kearney South Tract
2010003 – PRRIP Sherrerd/Clark Easement
2010004 – PRRIP Binfield Tract
2011001 - PRRIP East Leaman Tract
2011002 - PRRIP Follmer Alda Tract
2012001 – PRRIP Sullwold Tract
2012002 – PRRIP Johns Tract
2012003 – PRRIP Blessing Tract
2012004 - PRRIP DeBore Tract
2013001 - PRRIP Liehs Tract
2014002 - PRRIP Volentine Tract
2015001 – PRRIP Speidell Tract
2015002 - PRRIP BELF Tract
2015003 – PRRIP Blue Hole East
2018001 – PRRIP Dippel Tract
2019001 – PRRIP Robinson Tract
2020001 – PRRIP Bergren Tract
2020002 - PRRIP Lex Pit Tract
2021001 – PRRIP Meyer Tract

W201602 – PRRIP Lindstrum Tract
W201701 – PRRIP Edlund Tract
W201702 - PRRIP Albrecht Tract
W201703 - PRRIP Lakeside Tract

Personnel Responsibility Key

MH – Malinda Henry (Director of Biological and Ecological Services)
JJ – Jim Jenniges (NPPD)
TT – Tim Tunnell (Senior Land Manager)
ST – Seth Turner (Senior Water Resources Engineer)
EW – Ed Weschler (Water Resources Engineer)

Land Budget Overview By Priority Area

LP-2	Priority Area: Species Habitat		Total	Expenditure	% spent
	Item(s): Maintain Suitable In- and Off-Channel Sand & Water Habitat	Herbicide applications on OCSW peninsulas to maintain bare sand nesting habitat	\$42,500	\$14,770	4%
		Maintenance of Predator Exclusion Fencing	\$45,000	\$29,050	8%
		In-channel tree. Cattail, herbicide spraying	\$2,000	\$0	0%
	Item(s): Improve Target Species Sand and Water Habitat	Herbicide treatment on south bank to kill vegetation	\$17,000	\$0	0%
		Disking if necessary to provide in-channel vegetation	\$57,000	\$53,756	15%
		Irrigation Well Pumping	\$7,000	\$0	0%
		Tree Clearing	\$25,000	\$65,745	18%
	Item(s): Maintain Suitable Palustrine Wetland Habitat	Brush, tree, cattail & phrag herbicide spraying	\$40,000	\$21,134	6%
		Prescribed Burning	\$126,331	\$0	0%
Total			\$361,831	\$184,455	51%

LP-3	Priority Area: Land Acquisitions , LHIE Fees, & Property Taxes		Total	Expenditure	%
	Item(s): Land Acquisition, Property Taxes and Associated Fees	Land interest holding entity (LIHE)	\$65,000	\$61,423	7%
		Property Taxes	\$165,000	\$175,000	21%
		Land Acquisition Associated Costs	\$23,000	\$46,819	5%
		Buy, Lease or Easement (~100 acres)	\$600,000	\$2,405,746	282%
Total			\$853,000	\$2,688,988	315%

LP-4	Priority Area: Operations and Maintenance		Total	Expenditure	%
	Item(s): <i>Basic Property Maintenance Obligations and Needs</i>	Tract 2021001 Homesite Demo	\$100,000	\$210	0%
		Fence & Road Maintenance	\$44,000	\$65,193	0%
		Fix WY Flow Split & Speidell Erosion	\$79,000	\$75,304	21%
		Noxious Weed Control	\$71,000	\$43,487	12%
		Mowing	\$30,500	\$34,476	10%
		Lodge & Quonset Utilites & maintenance	\$25,000	\$11,260	3%
		Cabin Utilites & maintenance	\$5,000	\$4,515	1%
		Electricity for Livestock wells	\$3,400	\$0	0%
Total			\$357,900	\$234,445	47%

WPLW	Priority Area: Water Tract Operations and Maintenance		Total	Expenditure	%
	Item(s): <i>Basic Property Maintenance Obligations and Needs</i>	Fence & Road Maintenance	\$1,000	\$0	0%
		Noxious Weed Control	\$8,000	\$0	0%
		Mowing	\$1,000	\$0	0%
		Electricity for Livestock wells	\$100	\$0	0%
		Property Taxes	\$10,500	\$0	0%
Total			\$20,600	\$0	0%

2024 Land Budget Expenditure Overview Non-Complex Tracts

General Priorities

- * **Good Neighbor Policy** - Conduct all actions in accordance with Program's good neighbor policy.

Adaptive Management Priorities

- * **Species Monitoring** – Monitor whooping crane use of non-complex palustrine wetlands and least tern and piping plover use and productivity at off-channel sand and water nesting sites.

Species Habitat Priorities

- * **Maintain Suitable Off-Channel Sand and Water Nesting Habitat** – Apply pre-emergent herbicide on Tracts 2009008, 2010002, 2011001, 2011002 and 2020002 OCSW nesting habitat to prevent vegetation encroachment into nesting areas.
 - * **Maintain Suitable Palustrine Wetland Roosting Habitat** – Manage vegetation height in the palustrine wetland areas of Tracts 2012004 and 2013001 to maintain suitable unobstructed view widths for whooping crane roosting.
- ed and app **Protecting Other Species of Concern** – Identify presence of and determine methods to protect other species of concern during implementation of land-related activities.

Operations and Maintenance Priorities

- * **Basic Property Maintenance Obligations and Needs** – Fulfill basic property ownership obligations and needs including boundary fence signage, road maintenance, and noxious weed control.
- * **Agricultural Operations** – Oversight of crop leases on Tracts 2009008, 2012004 and 2013001 and hay lease on Tract 2011001.
- * **Sand and Gravel Mining Operations** – Monitor sand and gravel mining operations on Tracts 2009008 and 2011002.

NOTE: The budget section of this work plan only contains information for work items that are specific to these tracts. As such, tract-specific research and monitoring actions are presented but system-scale actions like target species and geomorphology/vegetation monitoring are not.

Priority Area: *General*

Item(s): *Land Interest and Tract-Level Restoration and Maintenance Planning*

No.	Management Activities	Budget Line Item	Completed	Cost (Estimated)	Cost (Actual)
NC 1	Coordination of Program land actions with neighboring landowners	N/A		N/A	N/A

Priority Area: *Species Habitat*

Item(s): *Maintain Suitable In- and Off-Channel Sand & Water Habitat*

No.	Management Activities	Budget Line Item	Completed	Cost (Estimated)	Cost (Actual)
NC 2	Herbicide applications on OCSW peninsulas to maintain bare sand nesting habitat (79 ac)	LP-2		\$30,000	\$11,117
NC 3	Maintenance of Predator Exclusion Fencing	LP-2		\$25,000	\$29,050

Priority Area: *Species Habitat*

Item(s): *Maintain Suitable Palustrine Wetland Habitat*

No.	Management Activities	Budget Line Item	Completed	Cost (Estimated)	Cost (Actual)
NC 4	Irrigation well pumping to augment water level in wetland area of Tract 2013001	LP-2		\$3,000	\$0
NC 5	Brush, tree, cattail herbicide spraying	LP-2		\$5,000	\$1,869
NC 6	Tract 2013001 Prescribed burn (34 ac)	LP-2		\$2,074	\$0

Priority Area: *Species Habitat*

Item(s): *Other Species of Concern*

No.	Management Activities	Budget Line Item	Completed	Cost (Estimated)	Cost (Actual)
NC 7	Habitat and species surveys on properties where work will occur	N/A		N/A	N/A
NC 8	Coordination with USFWS and NGPC to identify and mitigate potential impacts associated with land activities	N/A		N/A	N/A

Priority Area: Operations and Maintenance

Item(s): *Basic Property Maintenance Obligations and Needs*

No.	Management Activities	Budget Line Item	Completed	Cost (Estimated)	Cost (Actual)
NC 9	Fence and road maintenance	LP-4		\$3,000	\$939
NC 10	Noxious weed control	LP-4		\$5,000	\$1,866
NC 11	Mowing	LP-4		\$1,500	\$11,200
NC 12	Tract 2012004 Electricity	LP-4		\$1,200	\$0

Priority Area: Operations and Maintenance

Item(s): *Agricultural Operations*

No.	Management Activities	Budget Line Item	Completed	Cost (Estimated)	Cost (Actual)
NC 13	Oversight of grazing and cropland	N/A		N/A	N/A
NC 14	Oversight of sand and gravel mining	N/A		N/A	N/A

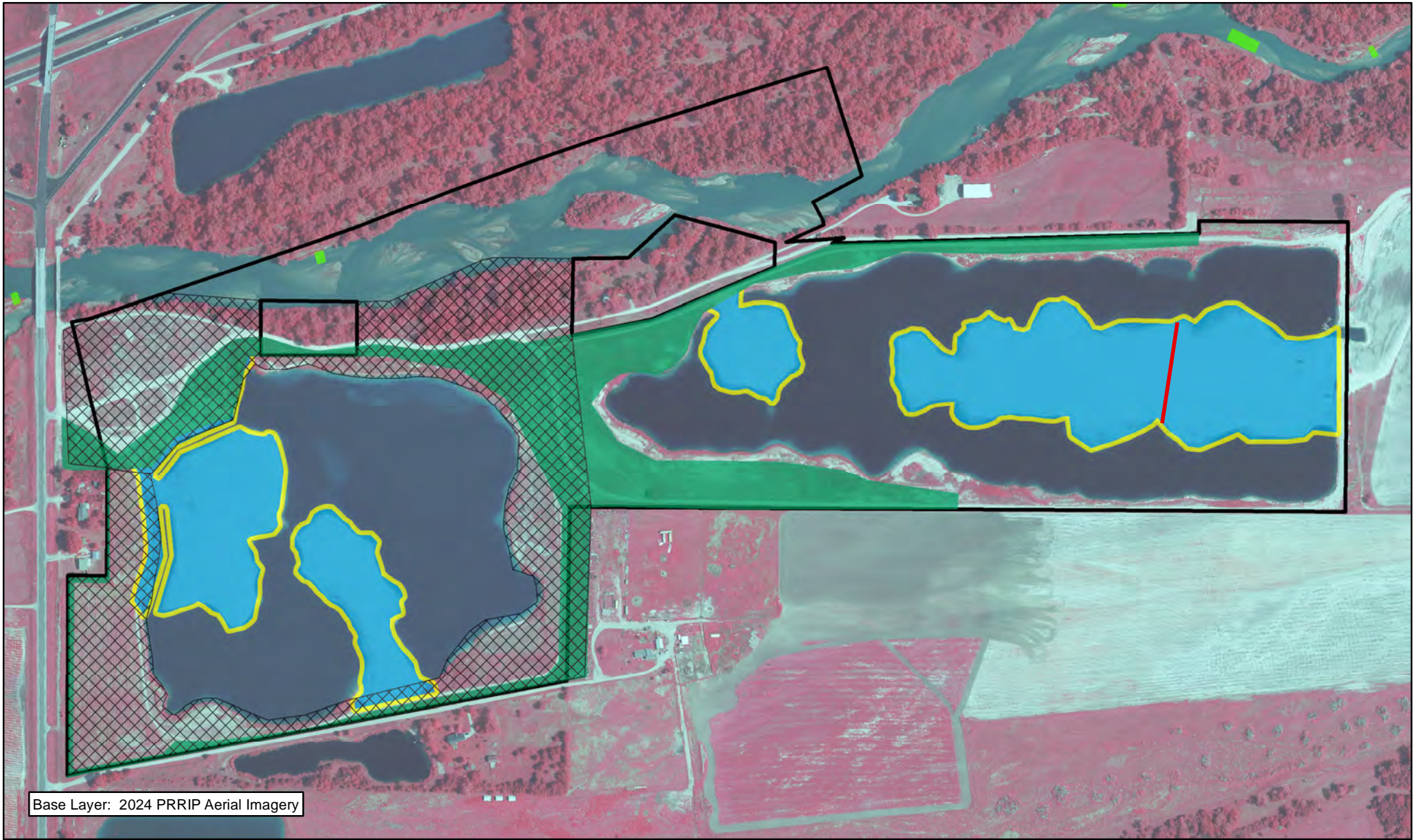
2024 Non-Complex Tracts Budget Summary

Expenditures by Program Budget Line Item

Priority Area	Item	Budget Line Item	Estimated Expenditure	Actual Expenditure
Species Habitat	Maintain Off-Channel Sand & Water Habitat	LP-2	\$55,000	\$40,167
Species Habitat	Create & Maintain Palustrine Wetland Habitat	LP-2	\$10,074	\$1,869
Subtotal			\$65,074	\$42,036
Operations and Maintenance	Property Maintenance and Agricultural Operations	LP-4	\$10,700	\$14,005
Total			\$75,774	\$56,041

Income

Tract	Item	Estimated Income	Actual Income
Tract 2009008	Hay Income	\$800	\$750
Tract 2011001	Hay Income	\$500	\$800
Tract 2011002	S & G Royalties		\$11,701
Tract 2012004	Cropland Cash Rent Income	\$4,000	\$3,900
Tract 2012004	Grazing Income	\$3,000	\$0
Tract 2013001	Irr. Cropland Cash Rent Income	\$7,500	\$7,920
Tract 2013001	Dry Cropland Cash Rent Income	\$4,500	\$4,092
Total		\$20,300	\$29,163

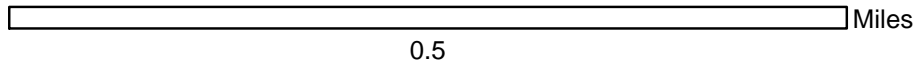


Base Layer: 2024 PRRIP Aerial Imagery



Legend

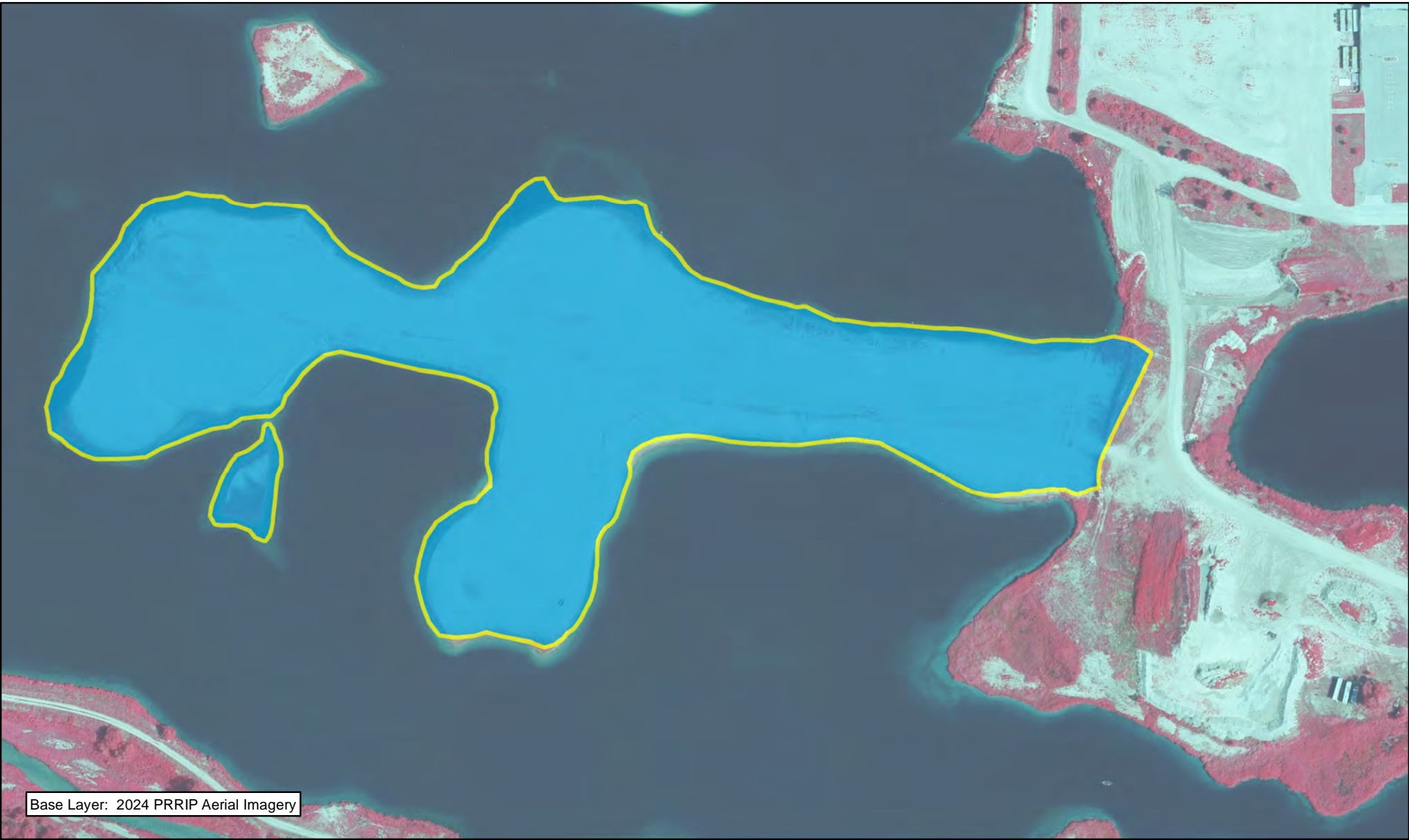
- Wovenwire Fence Construction
- Roundup Herbicide
- Noxious Weed Control
- PVWMA Phrag Control
- Preemergent
- Shredding/Mowing



NON-COMPLEX
TRACT 2009008
FY 2024 ACTIVITIES

Date: 01/27/2025
By: TRT




Figure 1




Base Layer: 2024 PRRIP Aerial Imagery



Legend

-  PVWMA Phrag Control
-  Roundup Herbicide
-  Preemergent

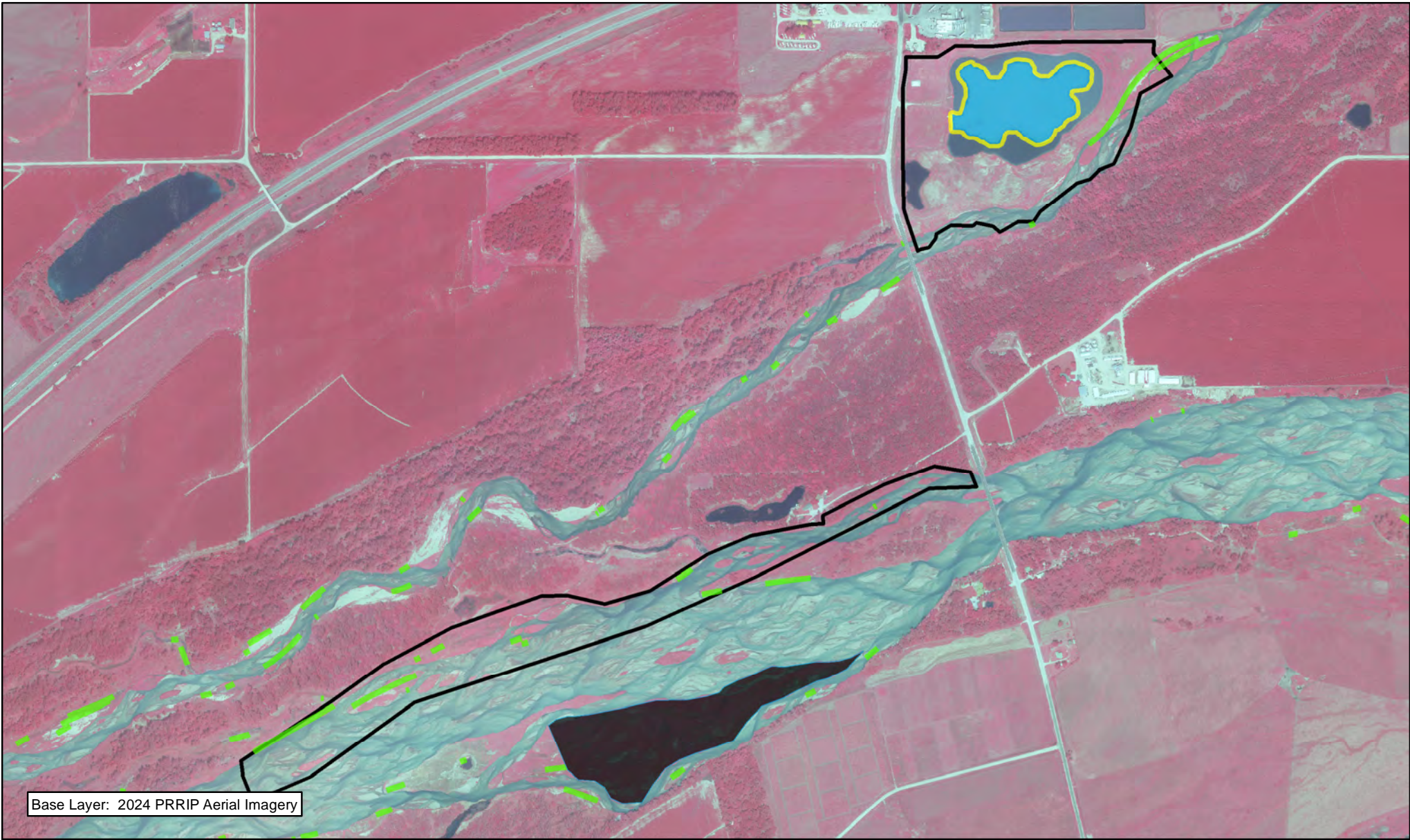


 0.1 Miles






NON-COMPLEX
TRACT 2010002
FY 2024 ACTIVITIES

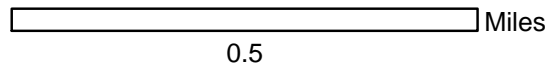
Date: 01/27/2025
By: TRT

Figure 2



Legend

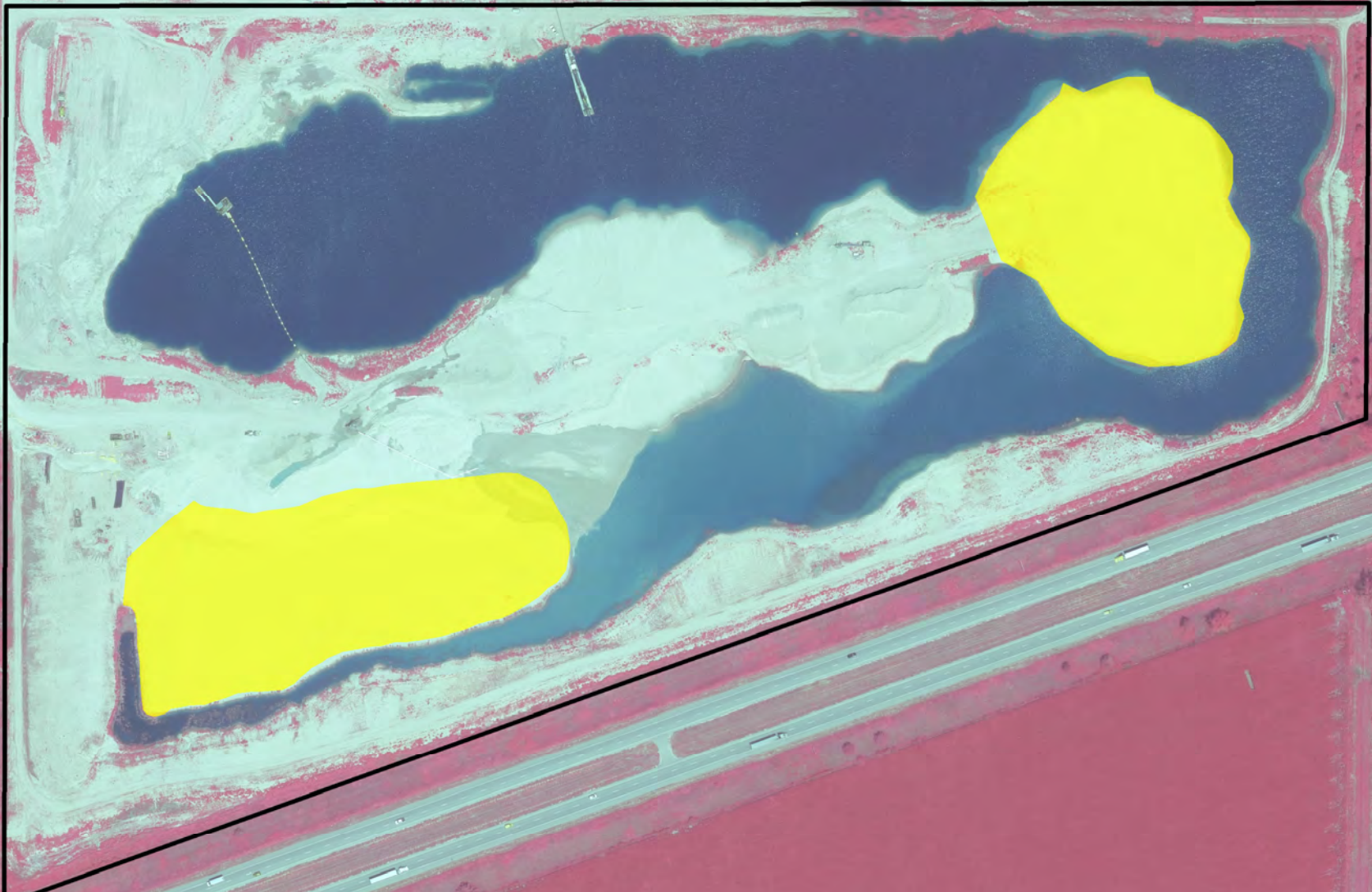
-  Disking
-  Noxious Weed Control
-  Roundup Nerbicide
-  PVWMA Phrag Control
-  Preemergent



NON-COMPLEX
TRACT 2011001
FY 2024 ACTIVITIES

Date: 01/27/2025
By: TRT

Figure 3


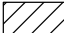


Base Layer: 2024 PRRIP Aerial Imagery




PLATTE RIVER
RECOVERY IMPLEMENTATION PROGRAM

Legend

-  Preemergent
-  Noxious Weed Control

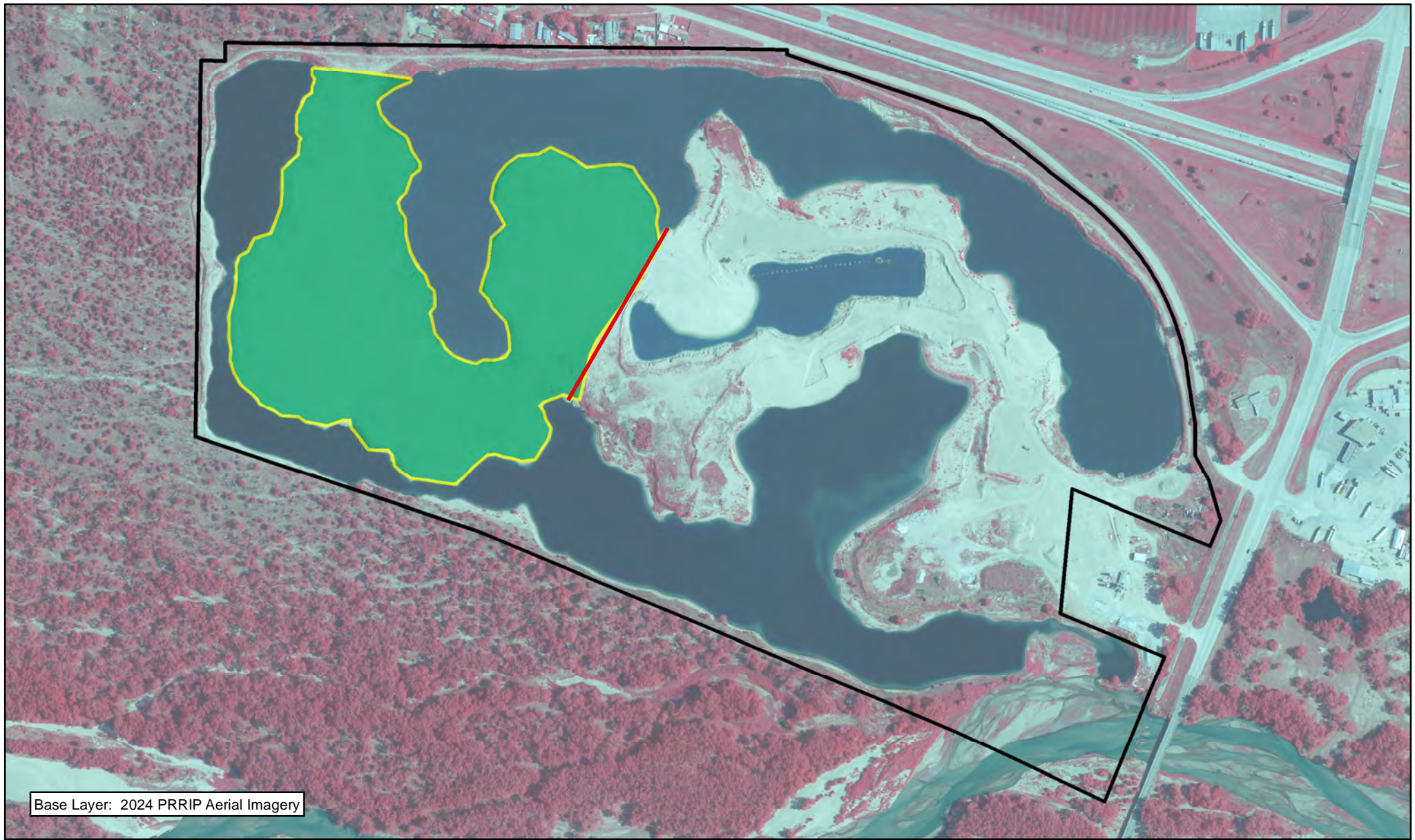


 Miles
0.1

NON-COMPLEX
TRACT 2011002
FY 2024 ACTIVITIES





Date: 01/27/2025
By: TRT

Figure 4



Base Layer: 2024 PRRIP Aerial Imagery

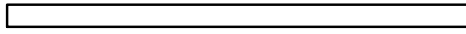
Legend

-  Roundup Herbicide
-  Preemergent
-  Noxious Weed Control
-  Wovenwire Fence Construction



PLATTE RIVER
RECOVERY IMPLEMENTATION PROGRAM

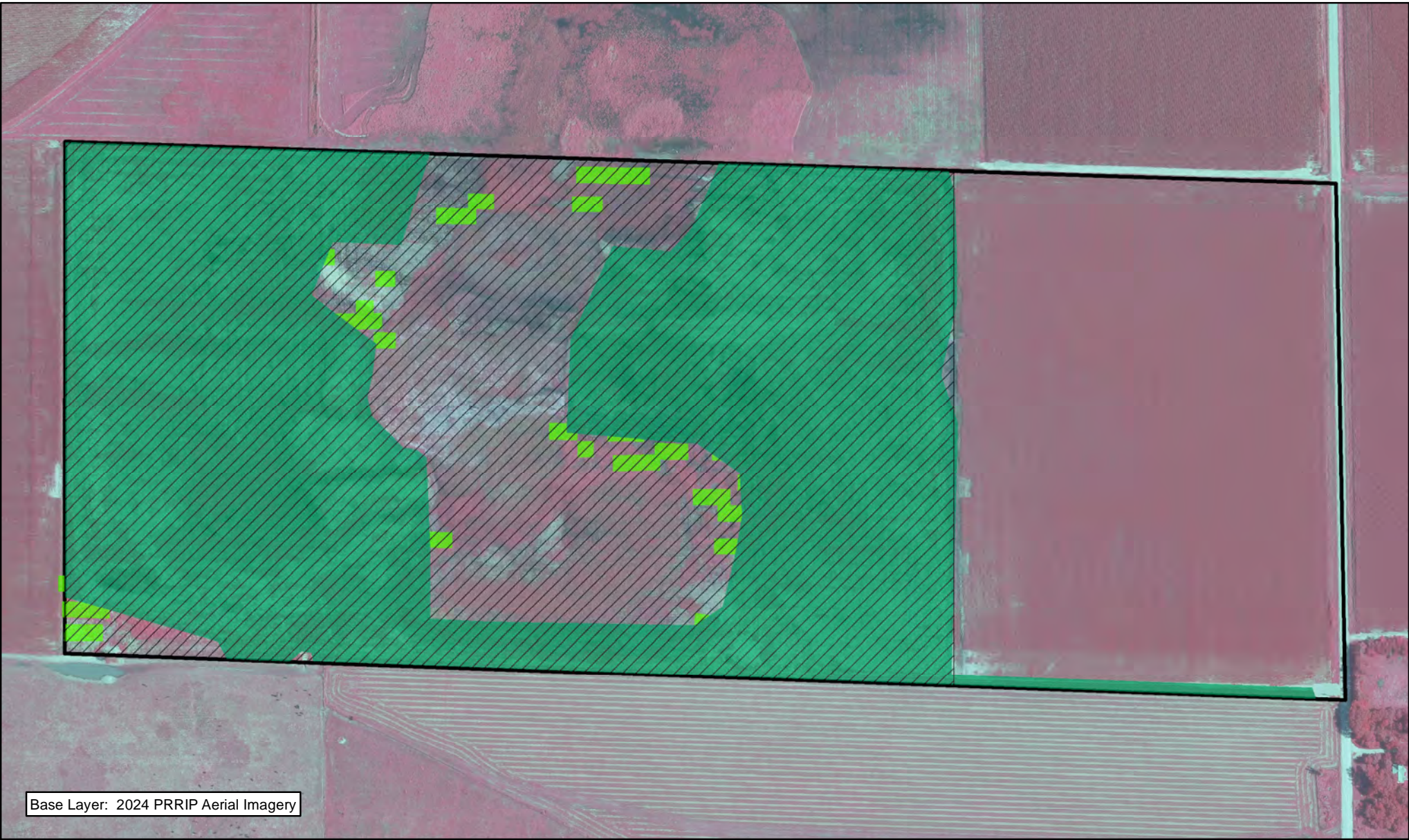


 Miles
0.25

NON-COMPLEX
TRACT 2020002
FY 2024 ACTIVITIES




Date: 01/27/2025
By: TRT

Figure 5



Base Layer: 2024 PRRIP Aerial Imagery

Legend

-  Shredding/Mowing
-  Noxious Weed Control
-  PVWMA Phrag Control



PLATTE RIVER
RECOVERY IMPLEMENTATION PROGRAM



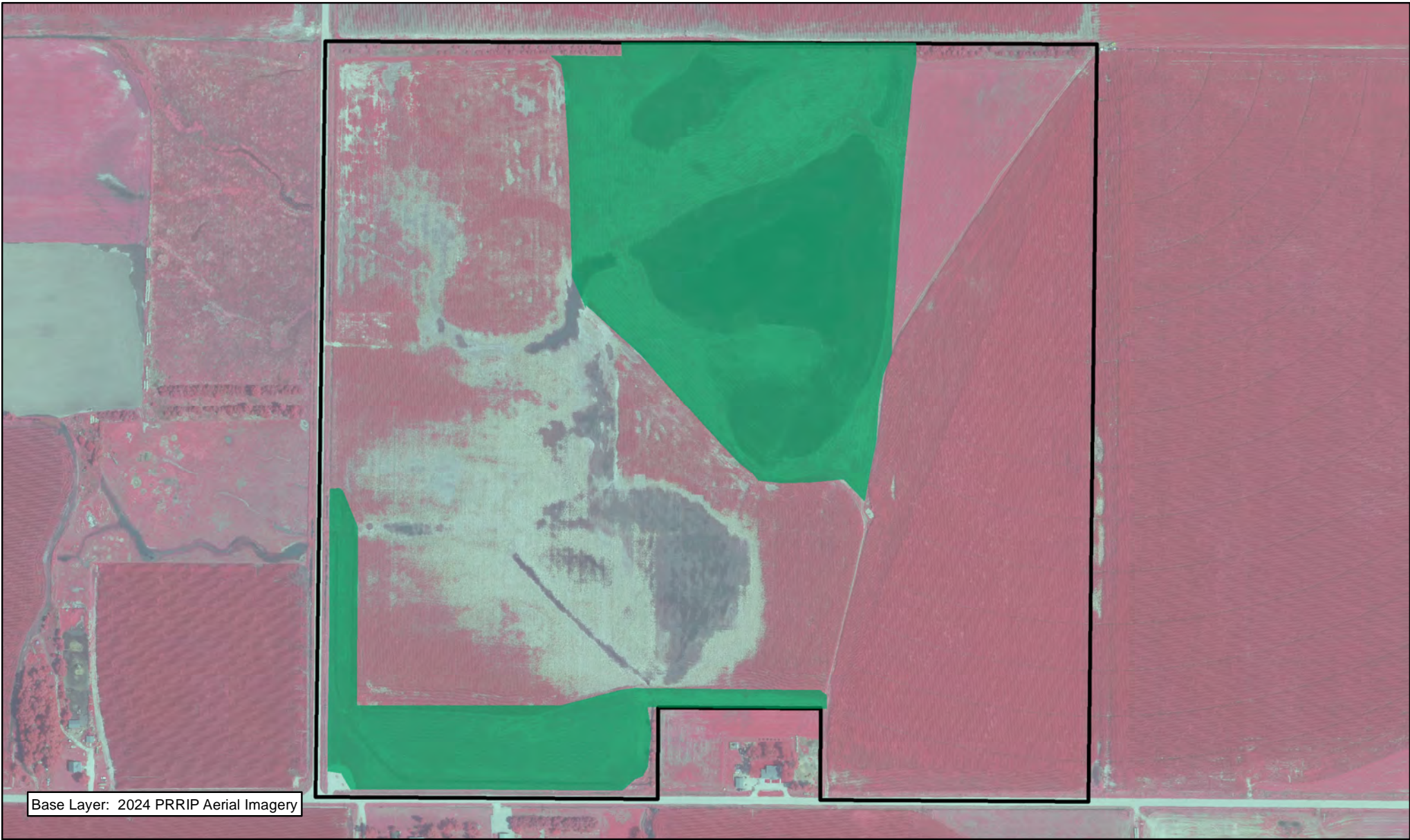
0.2 Miles

0.2

NON-COMPLEX
TRACT 2012004
FY 2024 ACTIVITIES

Date: 01/27/2025
By: TRT

Figure 6






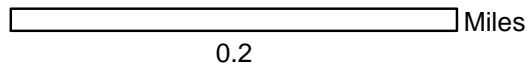
Base Layer: 2024 PRRIP Aerial Imagery



PLATTE RIVER
RECOVERY IMPLEMENTATION PROGRAM

Legend

-  Shredding/Mowing
-  Noxious Weed Control
-  PVWMA Phrag Control



NON-COMPLEX
TRACT 2013001
FY 2024 ACTIVITIES

Date: 01/27/2025
By: TRT

Figure 7





Base Layer: 2024 PRRIP Aerial Imagery




PLATTE RIVER
RECOVERY IMPLEMENTATION PROGRAM

Legend

-  P VWMA Phrag Control
-  Disking



 Miles
0.15

**NON-COMPLEX
MCA ISLAND
FY 2024 ACTIVITIES**

Date: 01/24/2025
By: TRT

Figure 8

2024 Land Budget Expenditure Overview Plum Creek Complex

General Priorities

- * **Good Neighbor Policy** - Conduct all actions in accordance with Program's good neighbor policy.

Adaptive Management Priorities

- * **Species Monitoring** – Monitor whooping crane use of riverine roosting habitat and least tern and piping plover use and productivity at off-channel sand and water nesting sites.

Species Habitat Priorities

- * **Improve Target Species Sand and Water Habitat** – Application of pre-emergent herbicide on OCSW peninsulas to maintain tern and plover nesting habitat. Control in-channel vegetation to maintain suitable unobstructed view widths for whooping cranes.
 - * **Protecting Other Species of Concern** – Identify presence of and determine methods to protect other species of concern during implementation of land-related activities.
- * The budget

Operations and Maintenance Priorities

- * **Basic Property Maintenance Obligations and Needs** – Fulfill basic property ownership obligations and needs including boundary fence signage, road maintenance, and noxious weed control.
- * **Agricultural Operations** – Oversight of grazing lease on Tract 2009003. Oversight of cropland/hay leases on Tract 2009007.

NOTE: The budget section of this work plan only contains information for work items that are specific to these tracts. As such, tract-specific research and monitoring actions are presented but system-scale actions like target species and geomorphology/vegetation monitoring are not.

Priority Area: General

Item(s): *Complex Land Interest and Complex-Level Planning*

No.	Management Activities	Budget Line Item	Completed	Cost (Estimated)	Cost (Actual)
PC 1	Coordination of Program land actions with neighboring landowners	N/A		N/A	N/A

Priority Area: *Species Habitat*

Item(s): *Maintain Suitable In- and Off-Channel Sand & Water Habitat*

No.	Management Activities	Budget Line Item	Completed	Cost (Estimated)	Cost (Actual)
PC2	Herbicide applications on OCSW peninsulas to maintain bare sand nesting habitat (21 ac)	LP-2		\$6,500	\$2,017
PC 3	Maintain blow sand from predator fences	LP-2		\$20,000	\$0

Priority Area: *Species Habitat*

Item(s): *Whooping Crane Grassland / Wet Meadow Habitat*

No.	Management Activities	Budget Line Item	Completed	Cost (Estimated)	Cost (Actual)
PC 4	Brush, tree, cattail & phrag herbicide spraying	LP-2		\$2,000	\$902
PC 5	Tract 2009003 Prescribed burn (141 ac)	LP-2		\$8,601	\$0
PC 6	Tract 2009007 Prescribed burn (62 ac)	LP-2		\$3,782	\$0

Priority Area: *Species Habitat*

Item(s): *Other Species of Concern*

No.	Management Activities	Budget Line Item	Completed	Cost (Estimated)	Cost (Actual)
PC 7	Habitat and species surveys on properties where work will occur	N/A		N/A	N/A
PC 8	Coordination with USFWS and NGPC to identify and mitigate potential impacts associated with land activities	N/A		N/A	N/A

Priority Area: *Operations and Maintenance*

Item(s): *Basic Property Maintenance Obligations and Needs*

No.	Management Activities	Budget Line Item	Completed	Cost (Estimated)	Cost (Actual)
PC 9	Lodge & Quonset demo and shed maintenace	LP-4		\$25,000	\$11,260
PC 10	Fence and road maintenance	LP-4		\$3,000	\$1,305
PC 11	Noxious weed control	LP-4		\$3,000	\$3,550
PC 12	Mowing	LP-4		\$4,000	\$3,763

Priority Area: *Operations and Maintenance*

Item(s): *Agricultural Operations*

No.	Management Activities	Budget Line Item	Completed	Cost (Estimated)	Cost (Actual)
PC 13	Oversight of grazing and cropland leases	N/A		N/A	N/A

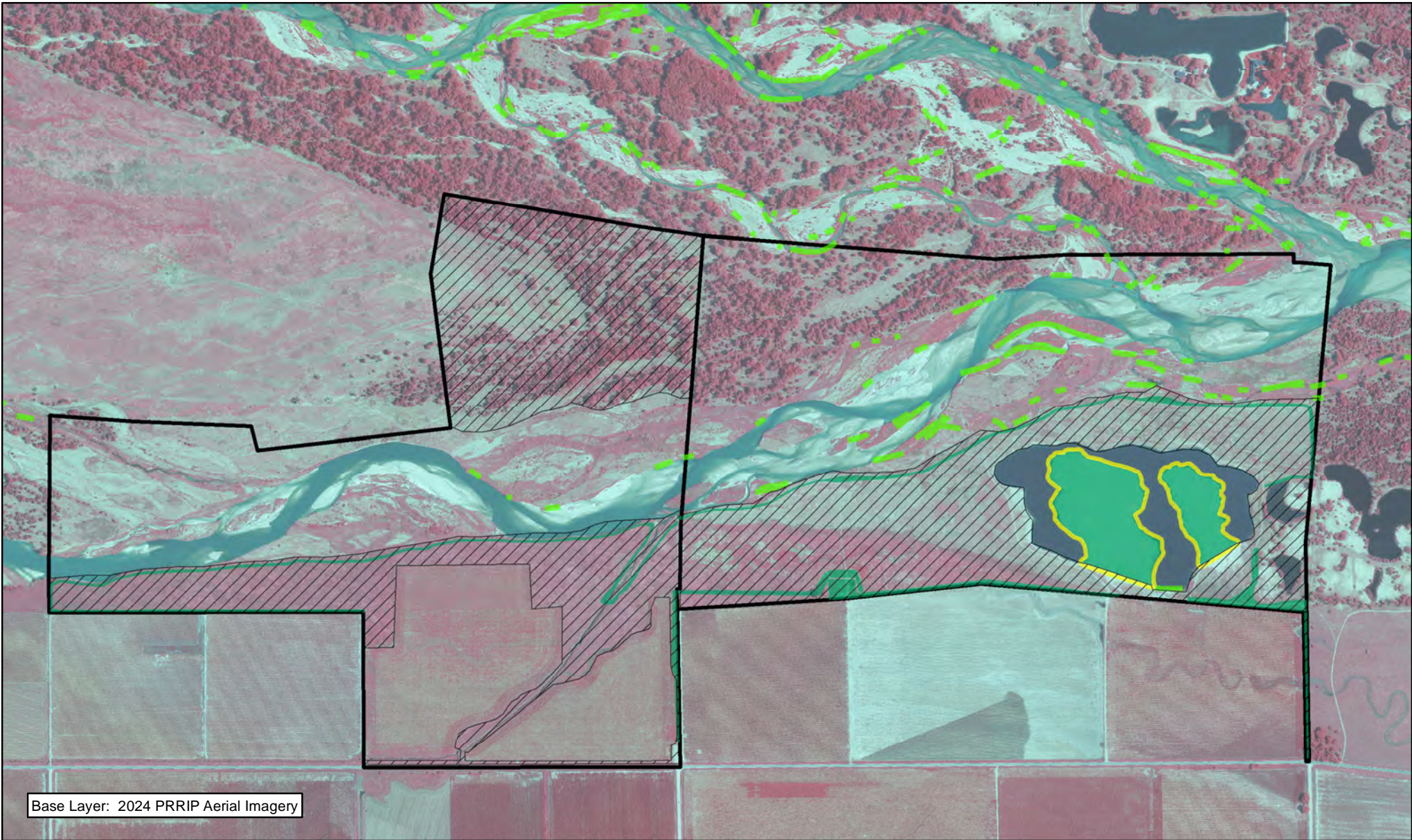
2024 Plum Creek Complex Budget Summary

Expenditures by Program Budget Line Item

Priority Area	Item	Budget Line Item	Estimated Expenditure	Actual Expenditure
Species Habitat	Maintain Suitable In- and Off-Channel Sand & Water Habitat	LP-2	\$26,500	\$2,017
Species Habitat	Whooping Crane Wet Meadow/ Grassland Habitat	LP-2	\$14,383	\$902
		Subtotal	\$40,883	\$2,919
Operations and Maintenance	Property Maintenance and Agricultural Operations	LP-4	\$35,000	\$19,878
		Total	\$75,883	\$22,797

Income

Tract	Item	Estimated Income	Actual Income
Tract 2009003	Grazing Income	\$0	\$0
Tract 2009007	Haying Income	\$0	\$990
Tract 2009007	Cropland Income	\$6,500	\$6,105
		Total	\$7,095








Base Layer: 2024 PRRIP Aerial Imagery



PLATTE RIVER
RECOVERY IMPLEMENTATION PROGRAM

Legend

-  PWWMA Phrag Control
-  Roundup Herbicide
-  Preemergent
-  Shredding/Mowing
-  Noxious Weed Control



0.5 Miles

**PLUM CREEK COMPLEX
FY 2024 ACTIVITIES**

Date: 02/3/2025
By: TRT

Figure 9

2024 Land Budget Expenditure Overview Cottonwood Ranch Complex

General Priorities

- * **Good Neighbor Policy** - *Conduct all actions in accordance with Program's good neighbor policy.*

Adaptive Management Priorities

- * **Species Monitoring** – Monitor whooping crane use of riverine and off-channel palustrine wetland roosting habitat and least tern and piping plover use and productivity at off-channel sand and water nesting sites.

Species Habitat Priorities

- * **Maintain Target Species Sand and Water Habitat** – Application of pre-emergent herbicide on OCSW peninsula to maintain tern and plover nesting habitat. Control in-channel vegetation to maintain suitable unobstructed view widths for whooping cranes.
- * **Broad-Scale Recharge Water Supply and Whooping Crane Habitat Project** – *Operation of the broad-scale recharge project will occur in 2022 with targeted fills during the fall and spring whooping crane migrations, and during other times of excess flows in the Platte River.*
- * **Management of grassland/wet meadow habitat for whooping cranes and sandhill cranes** – *Moderate grazing will be done on Lloyd Island for the 2023 grazing season. Wet meadow areas in Section 16 T8N R19W (Tracts 2008002 and 2010001) will be grazed/hayed due to the completion of the Broad -Scale Recharge Water Supply and Whooping Crane Habitat Project construction.*
- * **Protecting Other Species of Concern** – Identify presence of and determine methods to protect other species of concern during implementation of land-related activities.

Operations and Maintenance Priorities

- * **Basic Property Maintenance Obligations and Needs** – Fulfill basic property ownership obligations and needs on Tracts 2008002, 2009006, and 2010001 including fence and road maintenance and noxious weed control.
- * **Agricultural Operations** – Oversight of grazing/ haying leases on Tracts 2009006 and 2010001.

NOTE: The budget section of this work plan only contains information for work items that are specific to these tracts. As such, tract-specific research and monitoring actions are presented but system-scale actions like target species and geomorphology/vegetation monitoring are not.

Priority Area: General

Item(s): *Complex Land Interest and Complex-Level Planning*

No.	Management Activities	Budget Line Item	Completed	Cost (Estimated)	Cost (Actual)
CR 1	Coordination of Program land actions with neighboring landowners	N/A		N/A	N/A

Priority Area: Species Habitat

Item(s): *Maintain Suitable In- and Off-Channel Sand & Water Habitat*

No.	Management Activities	Budget Line Item	Completed	Cost (Estimated)	Cost (Actual)
CR 2	Tract 2008002 Pre-emergent herbicide application on plover nesting island (2 ac) and OCSW area (17 ac).	LP-2		\$6,000	\$1,636
CR 3	In channel tree, cattail herbicide spraying	LP-2		\$2,000	\$0

Priority Area: Species Habitat

Item(s): *Whooping Crane Grassland / Wet Meadow Habitat*

No.	Management Activities	Budget Line Item	Completed	Cost (Estimated)	Cost (Actual)
CR 4	Brush, tree, cattail & phrag herbicide spraying	LP-2		\$3,000	\$0
CR 5	Tract 2008002 Prescribed burn (195 ac)	LP-2		\$11,895	\$0
CR6	Tract 2008002 Prescribed burn (98 ac)	LP-2		\$5,978	\$0
CR 7	Tract 2010001 Prescribed burn (30ac)	LP-2		\$1,830	\$0

Item(s): Other Species of Concern

No.	Management Activities	Budget Line Item	Completed	Cost (Estimated)	Cost (Actual)
CR 8	Habitat and species surveys on properties where work will occur	As Needed	MH	N/A	N/A
CR 9	Coordination with USFWS and NGPC to identify and mitigate potential impacts associated with land activities	As Needed	MH	N/A	N/A

Priority Area: Operations and Maintenance

Item(s): *Basic Property Maintenance Obligations and Needs*

No.	Management Activities	Budget Line Item	Completed	Cost (Estimated)	Cost (Actual)
CR 10	Fence and road maintenance	LP-4		\$2,500	\$0
CR 11	Noxious weed control	LP-4		\$15,000	\$7,945
CR 12	Mowing	LP-4		\$10,000	\$8,575
CR 13	Tract 2010001 Electricity	LP-4		\$1,000	\$0

Priority Area: Operations and Maintenance

Item(s): *Agricultural Operations*

No.	Management Activities	Budget Line Item	Completed	Cost (Estimated)	Cost (Actual)
CR 14	Tract 2009006 grazing lease oversight	N/A		N/A	N/A
CR 15	Tract 2010001 grazing lease oversight	N/A		N/A	N/A
CR 16	Tract 2010001 haying lease oversight	N/A		N/A	N/A
CR 17	Tract 20008002 grazing & haying lease planning & oversight	N/A		N/A	N/A

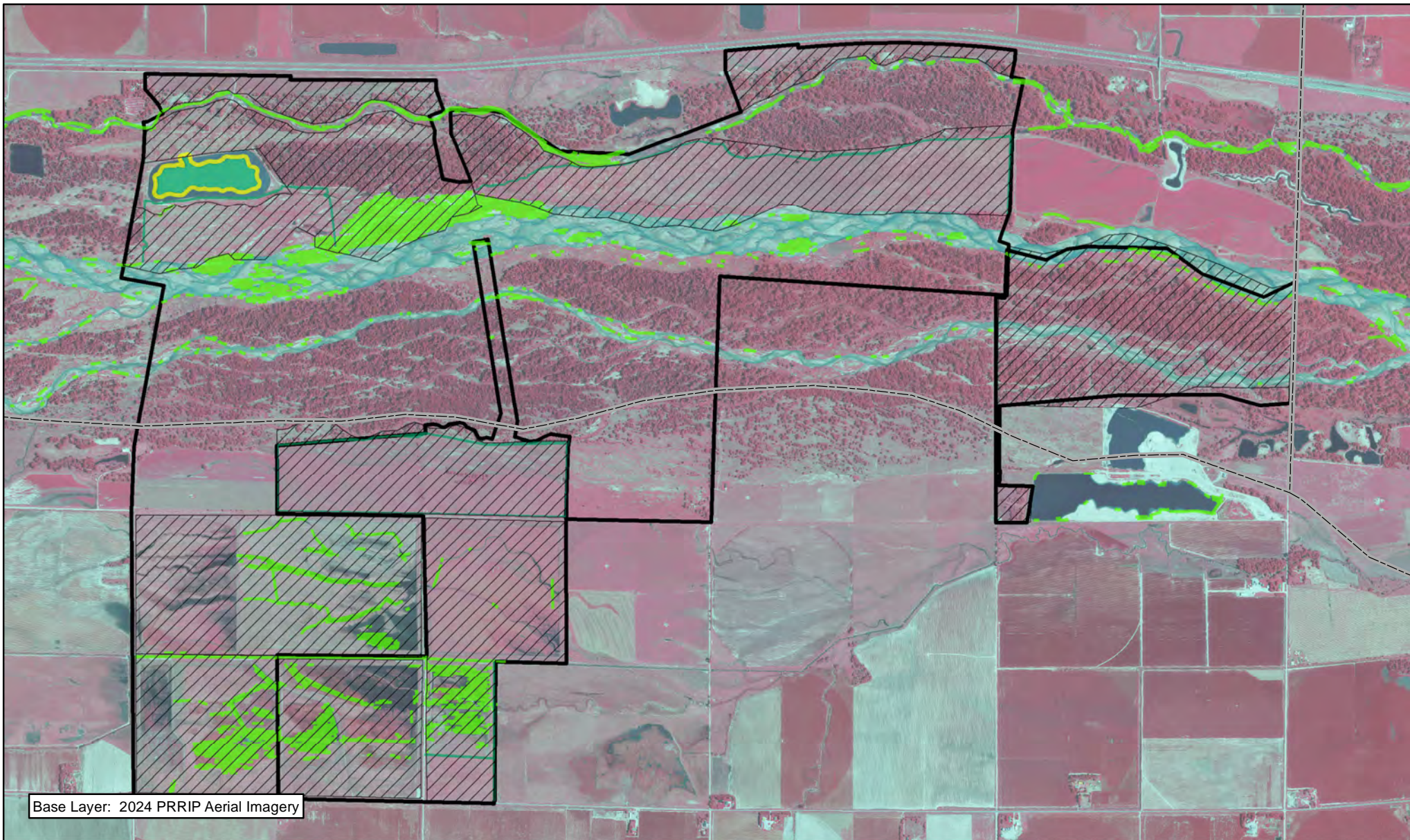
2024 Cottonwood Ranch Complex Budget Summary

Expenditures by Program Budget Line Item

Priority Area	Item	Budget Line Item	Estimated Expenditure	Actual Expenditure
Species Habitat	Target Species Sand and Water Habitat	LP-2	\$8,000	\$1,636
Species Habitat	Whooping Crane Wet Meadow/ Grassland Habitat	LP-2	\$22,703	\$0
Subtotal			\$30,703	\$1,636
Operations and Maintenance	Property Maintenance and Agricultural Operations	LP-4	\$28,500	\$16,520
Total			\$59,203	\$18,156

Income







Tract	Item	Estimated Income	Actual Income
Tract 2009006	Grazing Income	\$2,500	\$2,500
Tract 2010001	Grazing Income	\$6,000	\$5,775
Tract 2010001 SE 1/4	Grazing Income	\$12,145	\$2,625
Tract 2010001	Haying Income	\$3,000	\$1,313
Total		\$23,645	\$12,213



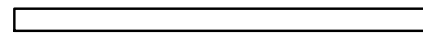
Base Layer: 2024 PRRIP Aerial Imagery



Legend

- | | |
|---|--|
|  County |  Noxious Weed Control |
|  Shredding/Mowing |  Roundup Herbicide |
|  PVWMA Phrag Control |  Preemergent |



 Miles

1

**COTTONWOOD RANCH
COMPLEX
FY 2024 ACTIVITIES**

Date: 02/3/2025
By: TRT

Figure 10

2024 Land Budget Expenditure Overview Elm Creek Complex

General Priorities

- * **Good Neighbor Policy** - Conduct all actions in accordance with Program's good neighbor policy.

Adaptive Management Priorities

- * **Species Monitoring** – Monitor whooping crane use of in-channel roosting habitat and least tern and piping plover use and productivity at off-channel sand and water nesting sites.

Species Habitat Priorities

- * **Maintain Target Species Sand and Water Habitat** – Control in-channel vegetation to maintain suitable unobstructed view widths for whooping cranes.
- * **Protecting Other Species of Concern** – Identify presence of and determine methods to protect other species of concern during implementation of land-related activities.

* The budget items have been reviewed and approved by the LAC on October 18, 2023

Operations and Maintenance Priorities

- * **Basic Property Maintenance Obligations and Needs** – Fulfill basic property ownership obligations and needs on Tracts 2009002, 2009005, 2012001 and 2012002 including fence and road maintenance and noxious weed control.
- * **Agricultural Operations** – Oversight of grazing/ haying leases on Tracts 2009005, 2012001 and 2012002.

NOTE: The budget section of this work plan only contains information for work items that are specific to these tracts. As such, tract-specific research and monitoring actions are presented but system-scale actions like target species and geomorphology/vegetation monitoring are not.

Priority Area: General

Item(s): Complex Land Interest and Complex-Level Planning

No.	Management Activities	Budget Line Item	Completed	Cost (Estimated)	Cost (Actual)
EC 1	Coordination of Program land actions with neighboring landowners	N/A		N/A	N/A

Priority Area: Species Habitat

Item(s): Maintain Suitable In- and Off-Channel Sand & Water Habitat

No.	Management Activities	Budget Line Item	Completed	Cost (Estimated)	Cost (Actual)
EC 2	No items	N/A		\$0	\$0

Priority Area: Species Habitat

Item(s): Whooping Crane Grassland / Wet Meadow Habitat

No.	Management Activities	Budget Line Item	Completed	Cost (Estimated)	Cost (Actual)
EC 3	Brush, tree, cattail herbicide spraying	LP-2		\$3,000	\$2,166
EC 4	Tract 2009002 Prescribed burn (37 ac)	LP-2		\$2,257	\$0
EC 5	Tract 2012002 Prescribed burn (192 ac)	LP-2		\$11,712	\$0

Priority Area: Species Habitat

Item(s): Other Species of Concern

No.	Management Activities	Budget Line Item	Completed	Cost (Estimated)	Cost (Actual)
EC 6	Habitat and species surveys on properties where work will occur	N/A		N/A	N/A
EC 7	Coordination with USFWS and NGPC to identify and mitigate potential impacts associated with land activities	N/A		N/A	N/A

Priority Area: Operations and Maintenance

Item(s): Basic Property Maintenance Obligations and Needs

No.	Management Activities	Budget Line Item	Completed	Cost (Estimated)	Cost (Actual)
EC 8	Tract 2009002 building utilities and maintenance	LP-4		\$5,000	\$4,515
EC 9	Fence and road maintenance	LP-4		\$2,000	\$626
EC 10	Mowing	LP-4		\$3,000	\$4,988
EC 11	Noxious weed control	LP-4		\$20,000	\$13,887

Priority Area: Operations and Maintenance

Item(s): Agricultural Operations

No.	Management Activities	Budget Line Item	Completed	Cost (Estimated)	Cost (Actual)
EC 12	Tract 2009002 crop lease oversight	N/A		N/A	N/A
EC 13	Tract 2009005 grazing lease oversight	N/A		N/A	N/A
EC 14	Tract 2012001 haying lease oversight	N/A		N/A	N/A
EC 15	Tract 2012002 grazing lease oversight	N/A		N/A	N/A

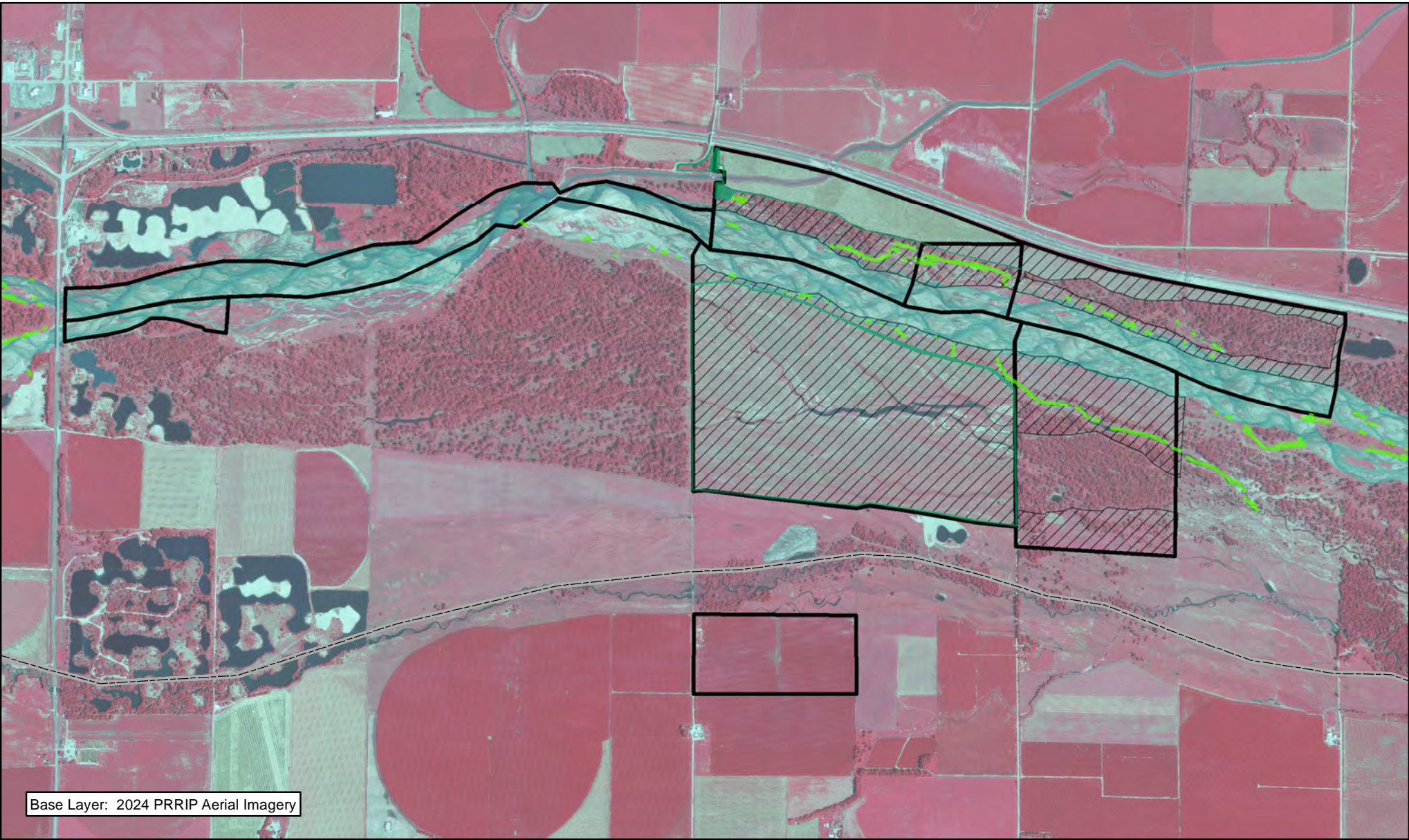
2024 Elm Creek Complex Budget Summary

Expenditures by Program Budget Line Item

Priority Area	Item	Budget Line Item	Estimated Expenditure	Actual Expenditure
Species Habitat	Target Species Sand and Water Habitat	LP-2	\$0	\$0
Species Habitat	Whooping Crane Wet Meadow/ Grassland Habitat	LP-2	\$16,969	\$2,166
		Subtotal	\$16,969	\$2,166
Operations and Maintenance	Property Maintenance and Agricultural Operations	LP-4	\$30,000	\$24,016
		Total	\$46,969	\$26,182

Income





Tract	Item	Estimated Income	Actual Income
Tract 2009002	Crop Income	\$4,800	\$4,640
Tract 2009005	Grazing Income	\$4,900	\$4,900
Tract 2012001	Haying Income	\$2,000	\$1,702
Tract 2012002	Grazing Income	\$3,645	\$5,468
		Total	\$16,710



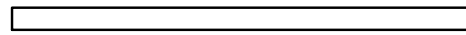
Base Layer: 2024 PRRIP Aerial Imagery



Legend

-  County
-  PVWMA Phrag Control
-  Noxious Weed Control
-  Shredding/Mowing



 Miles

1

**ELM CREEK COMPLEX
FY 2024 ACTIVITIES**

Date: 02/3/2025
By: TRT

Figure 11

2024 Land Budget Expenditure Overview Jerry F. Kenny Pawnee Complex

General Priorities

- * **Good Neighbor Policy** - *Conduct all actions in accordance with Program's good neighbor policy.*

Adaptive Management Priorities

- * **Species Monitoring** – *Monitor whooping crane use of in-channel roosting habitat.*

Species Habitat Priorities

- * **Maintain Target Species Sand and Water Habitat** – *Control in-channel vegetation to maintain suitable unobstructed view widths for whooping cranes. Remove vegetation from overbank areas adjacent to the channel to promote channel widening through lateral erosion.*
- * **Protecting Other Species of Concern** – *Identify presence of and determine methods to protect other species of concern during implementation of land-related activities.*

* The budget items have been reviewed and approved by the LAC on October 18, 2023

Operations and Maintenance Priorities

- * **Basic Property Maintenance Obligations and Needs** – *Fulfill basic property ownership obligations and needs on Tracts 2014002 and 2015002.*
- * **Agricultural Operations** – *Oversight of grazing/ haying leases on Tracts 2014002 and 2015002.*

NOTE: The budget section of this work plan only contains information for work items that are specific to these tracts. As such, tract-specific research and monitoring actions are presented but system-scale actions like target species and geomorphology/vegetation monitoring are not.

Priority Area: General

Item(s): *Complex Land Interest and Good Neighbor Policy*

No.	Management Activities	Budget Line Item	Completed	Cost (Estimated)	Cost (Actual)
PAW 1	Coordination of Program land actions with neighboring landowners	N/A		N/A	N/A

Priority Area: Adaptive Management & Target Species Habitat

Item(s): *Tern, Plover and Whooping Crane Riverine Habitat Experiments*

No.	Management Activities	Budget Line Item	Completed	Cost (Estimated)	Cost (Actual)
PAW 2	Herbicide treatment on south bank to kill vegetation prior to disking (28 ac)	LP-2		\$6,000	\$0
PAW 3	In-channel island cross disking to facilitate erosion (20 ac)	LP-2		\$12,000	\$4,528

Priority Area: Species Habitat

Item(s): *Other Species of Concern*

No.	Management Activities	Budget Line Item	Completed	Cost (Estimated)	Cost (Actual)
PAW 4	Habitat and species surveys on properties where work will occur	N/A		N/A	N/A
PAW 5	Coordination with USFWS and NGPC to identify and mitigate potential impacts associated with land activities	N/A		N/A	N/A

Priority Area: Operations and Maintenance

Item(s): *Basic Property Maintenance Obligations and Needs*

No.	Management Activities	Budget Line Item	Completed	Cost (Estimated)	Cost (Actual)
PAW 6	Noxious weed control	LP-4		\$4,000	\$4,840
PAW 7	Fence and road maintenance	LP-4		\$2,000	\$0
PAW 8	Mowing	LP-4		\$1,000	\$0

Priority Area: Operations and Maintenance

Item(s): *Agricultural Operations*

No.	Management Activities	Budget Line Item	Completed	Cost (Estimated)	Cost (Actual)
PAW 9	Tract 2014002 grazing lease oversight	N/A		N/A	N/A
PAW 10	Tract 2015002 grazing lease oversight	N/A		N/A	N/A
PAW 11	Tract 2015002 haying lease oversight	N/A		N/A	N/A

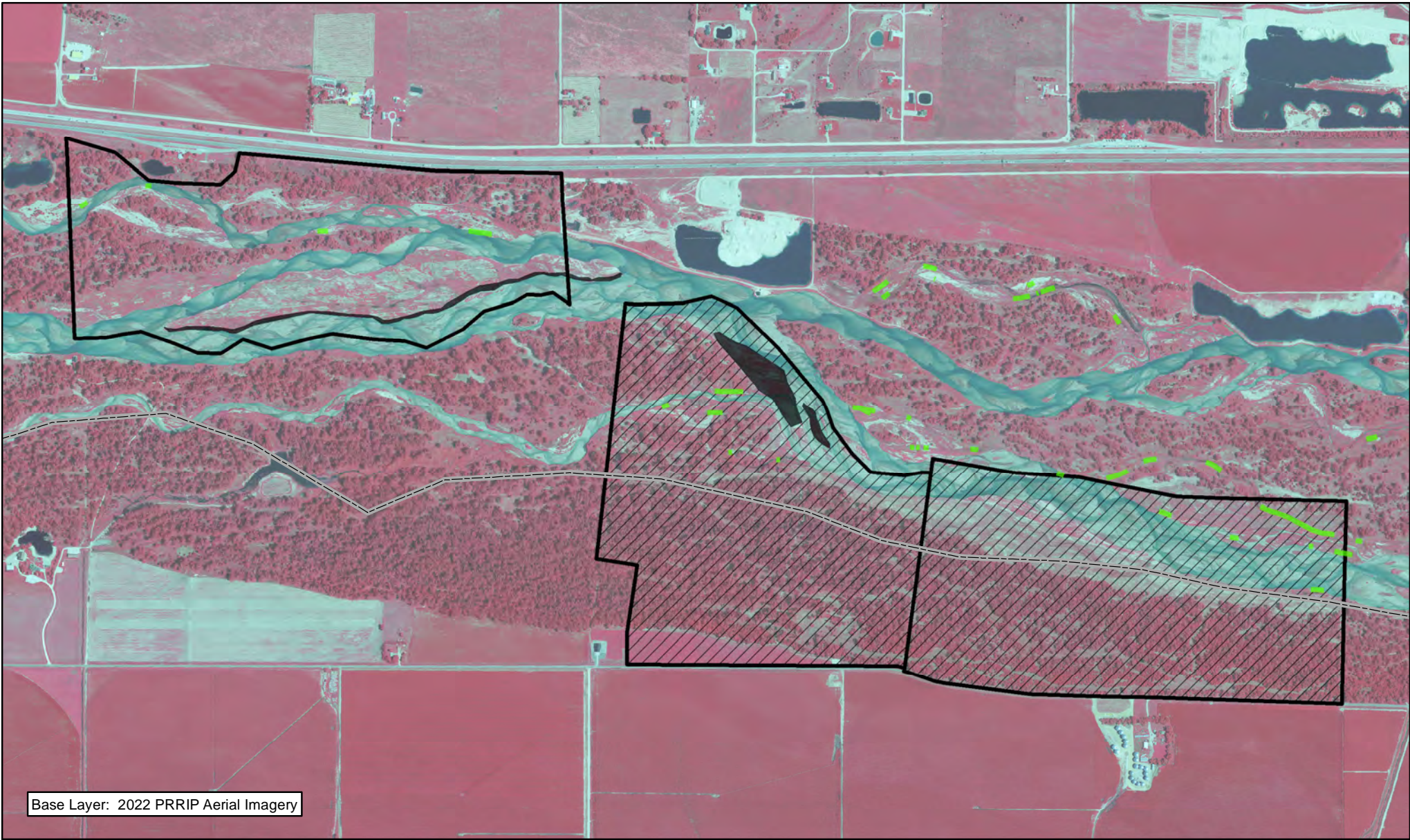
2024 Jerry F. Kenny Pawnee Complex Budget Summary

Expenditures by Program Budget Line Item

Priority Area	Item	Budget Line Item	Estimated Expenditure	Actual Expenditure
Adaptive Management & Species Habitat	Target Species Sand and Water Habitat	LP-2	\$18,000	\$4,528
		Subtotal	\$18,000	\$4,528
Operations and Maintenance	Property Maintenance and Agricultural Operations	LP-4	\$7,000	\$4,840
		Total	\$25,000	\$9,368

Income

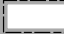


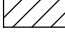
Tract	Item	Estimated Income	Actual Income
Tract 2015002	Haying Income	\$750	\$636
Tract 2014002 & 2015002	Grazing Income	\$3,400	\$3,187
	Total	\$4,150	\$3,823

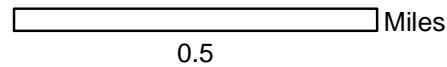


Base Layer: 2022 PRRIP Aerial Imagery



Legend

-  County
-  Diking
-  PVWMA Phrag Control
-  Noxious Weed Control



JERRY F. KENNY
PAWNEE COMPLEX
FY 2024 ACTIVITIES

Date: 02/3/2025
By: TRT

Figure 12

2024 Land Budget Expenditure Overview Ft Kearny Complex

General Priorities

- * **Good Neighbor Policy** - Conduct all actions in accordance with Program's good neighbor policy.

Adaptive Management Priorities

- * **Species Monitoring** – Monitor whooping crane use of off-channel palustrine wetlands and in-channel roosting habitat.

Species Habitat Priorities

- * **Maintain Target Species Sand and Water Habitat** – Control in-channel vegetation to maintain suitable unobstructed view widths for whooping cranes. Remove vegetation from overbank areas adjacent to the channel to promote channel widening through lateral erosion.
- * **Protecting Other Species of Concern** – Identify presence of and determine methods to protect other species of concern during implementation of land-related activities.

* The budget items have been reviewed ar

- * **Basic Property Maintenance Obligations and Needs** – Fulfill basic property ownership obligations and needs on Tracts 2008001, 2009001, 2009004, 2010003, 2012003 and 2015001 including fence and road maintenance and noxious weed control.
- * **Agricultural Operations** – Oversight of grazing/haying leases on Tracts 2008001, 2012003, 2009001, 2009004, and 2015001.

NOTE: The budget section of this work plan only contains information for work items that are specific to these tracts. As such, tract-specific research and monitoring actions are presented but system-scale actions like target species and geomorphology/vegetation monitoring are not.

Priority Area: General

Item(s): *Complex Land Interest and Good Neighbor Policy*

No.	Management Activities	Budget Line Item	Completed	Cost (Estimated)	Cost (Actual)
FK 1	Coordination of Program land actions with neighboring landowners	N/A		N/A	N/A

Priority Area: Species Habitat

Item(s): *Improve Target Species Sand and Water Habitat*

No.	Management Activities	Budget Line Item	Completed	Cost (Estimated)	Cost (Actual)
FK 2	Herbicide treatment on perimeter of cleared islands to kill vegetation prior to disking	LP-2		\$3,000	\$0
FK 3	In-channel island cross disking to facilitate erosion	LP-2		\$15,000	\$7,178

Priority Area: Species Habitat

Item(s): *Whooping Crane Grassland / Wet Meadow Habitat*

No.	Management Activities	Budget Line Item	Completed	Cost (Estimated)	Cost (Actual)
FK 4	Tract 2009001 Annual electrical service fee at irrigation well to supplement water to wetland	LP-2		\$4,000	\$0
FK 5	Brush, tree, cattail herbicide spraying	LP-2		\$2,000	\$2,157
FK 6	Tract 2008001- Prescribe burn (78 ac)	LP-2		\$4,758	\$0
FK 7	Tract 2012003- Prescribe burn (67 ac)	LP-2		\$4,087	\$0
FK 8	Tract 2009004- Prescribe burn (77 ac)	LP-2		\$4,697	\$0

FK 9	Tract 2015001- Prescribe burn (180 ac)	LP-2		\$10,980	\$0
------	--	------	--	----------	-----

Priority Area: Species Habitat

Item(s): *Other Species of Concern*

No.	Management Activities	Budget Line Item	Completed	Cost (Estimated)	Cost (Actual)
FK 10	Habitat and species surveys on properties where work will occur	N/A		N/A	N/A
FK 11	Coordination with USFWS and NGPC to identify and mitigate potential impacts associated with land activities	N/A		N/A	N/A

Priority Area: Operations and Maintenance

Item(s): *Basic Property Maintenance Obligations and Needs*

No.	Management Activities	Budget Line Item	Completed	Cost (Estimated)	Cost (Actual)
FK 12	Tract 2009004 & 2015001 Electricity	LP-4		\$1,000	\$0
FK 13	Fix Wyoming Tract Flow Split and Speidell North Channel Erosion	LP-4 charged to LP 2		\$79,000	\$75,304
FK 14	Noxious weed control	LP-4		\$14,000	\$7,128
FK 15	Fence and road maintenance	LP-4		\$2,500	\$7,823
FK 16	Mowing	LP-4		\$2,500	\$1,225

Item(s): *Agricultural Operations*

No.	Management Activities	Budget Line Item	Completed	Cost (Estimated)	Cost (Actual)
FK 17	Tract 2008001 grazing lease oversight	N/A		N/A	N/A
FK 18	Tract 2012003 grazing lease oversight	N/A		N/A	N/A
FK 19	Tract 2015001 grazing lease oversight	N/A		N/A	N/A

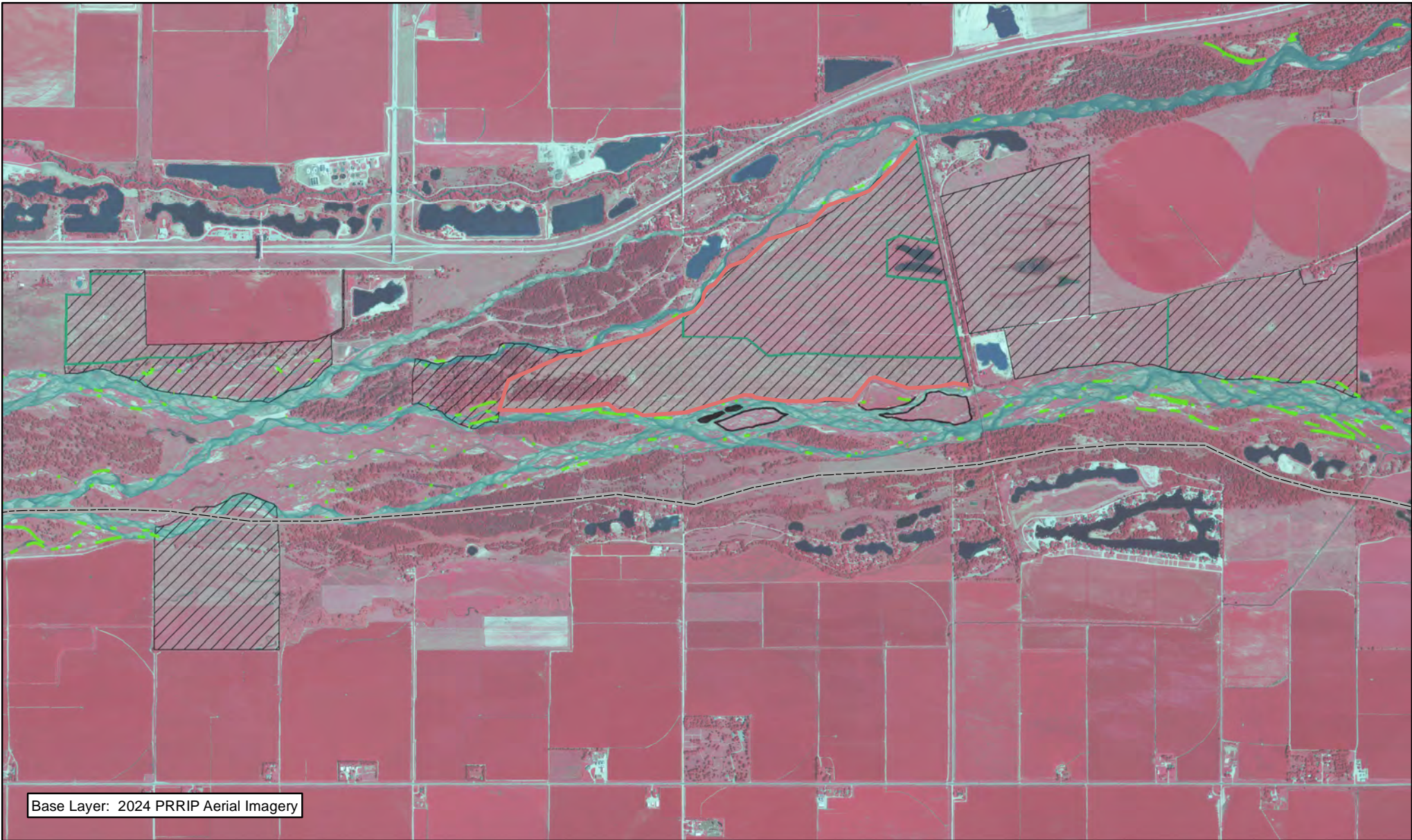
2024 Ft Kearny Complex Budget Summary

Expenditures by Program Budget Line Item

Priority Area	Item	Budget Line Item	Estimated Expenditure	Actual Expenditure
Species Habitat	Improve Sand and Water Habitat	LP-2	\$18,000	\$7,178
Species Habitat	Whooping Crane Wet Meadow/ Grassland Habitat	LP-2	\$30,522	\$2,157
Subtotal			\$48,522	\$9,335
Operations and Maintenance	Property Maintenance and Agricultural Operations	LP-4	\$99,000	\$91,480
Total			\$147,522	\$100,815

Income

Tract	Item	Estimated Income	Actual Income
Tract 2008001 N & 2012003	Grazing Income	\$3,000	\$1,800
Tract 2008001 S	Grazing Income	\$8,250	\$8,250
Tract 2009001	Grazing Income	\$0	\$7,225
Tract 2009004	Grazing Income	\$16,000	\$8,750
Tract 2012003	Cropland Income	\$1,900	\$1,800
Tract 2015001	Grazing Income	\$11,500	\$10,000
Total		\$40,650	\$37,825

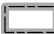



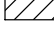




Base Layer: 2024 PRRIP Aerial Imagery




PLATTE RIVER
RECOVERY IMPLEMENTATION PROGRAM

Legend

-  County
-  Shredding/Mowing
-  Disking
-  PVWMA Phrag Control
-  Noxious Weed Control
-  Fence Repair
-  Barbwire Fence Construction



 Miles

1

**FT. KEARNY COMPLEX
FY 2024 ACTIVITIES**

Date: 02/3/2025
By: TRT

Figure 13

2024 Land Budget Expenditure Overview Minden- Gibbon Agreements

Adaptive Management Priorities

- * **Species Monitoring** – Monitor whooping crane use of in-channel roosting habitat.

Species Habitat Priorities

- * **Maintain Target Species Sand and Water Habitat** – Control in-channel vegetation to maintain suitable unobstructed view widths for whooping cranes.

Priority Area: Species Habitat

Item(s): *Improve Target Species Sand and Water Habitat*

No.	Management Activities	Budget Line Item	Completed	Cost (Estimated)	Cost (Actual)
M-G 1	Brush, tree, cattail herbicide spraying	LP-2		\$15,000	\$18,860

2024 Minden-Gibbon Management Agreement Budget Summary

Expenditures by Program Budget Line Item

Priority Area	Item	Budget Line Item	Estimated Expenditure	Actual Expenditure
Species Habitat	Improve Target Species Sand and Water Habitat	LP-2	\$15,000	\$18,860
Total			\$15,000	\$18,860






Base Layer: 2024 PRRIP Aerial Imagery

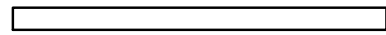


PLATTE RIVER
RECOVERY IMPLEMENTATION PROGRAM

Legend

-  County
-  PVWMA Phrag Control
-  Disking



 Miles

1

**MINDEN-GIBBON
COMPLEX
FY 2024 ACTIVITIES**

Date: 02/3/2025
By: TRT

Figure 14

2024 Land Budget Expenditure Overview Clark Island Complex

General Priorities

- * **Good Neighbor Policy** - Conduct all actions in accordance with Program's good neighbor policy.

Adaptive Management Priorities

- * **Species Monitoring** – Monitor whooping crane use of palustrine wetlands and in-channel roosting habitat.

Species Habitat Priorities

- * **Maintain Target Species Sand and Water Habitat** – Control in-channel vegetation to maintain suitable unobstructed view widths for whooping cranes.
- * **Protecting Other Species of Concern** – Identify presence of and determine methods to protect other species of concern during implementation of land-related activities.

* The budget items have been reviewed and

- * **Basic Property Maintenance Obligations and Needs** – Fulfill basic property ownership obligations and needs including fence and road maintenance and noxious weed control.
- * **Agricultural Operations** – Oversight of cropland, grazing/ haying leases

NOTE: The budget section of this work plan only contains information for work items that are specific to these tracts. As such, tract-specific research and monitoring actions are presented but system-scale actions like target species and geomorphology/vegetation monitoring are not.

Priority Area: General

Item(s): *Complex Land Interest and Complex-Level Planning*

No.	Management Activities	Budget Line Item	Completed	Cost (Estimated)	Cost (Actual)
CI 1	Coordination of Program land actions with neighboring landowners	N/A		N/A	N/A

Priority Area: Species Habitat

Item(s): *Improve Target Species Sand and Water Habitat*

No.	Management Activities	Budget Line Item	Completed	Cost (Estimated)	Cost (Actual)
CI 2	Herbicide treatment on south bank to kill vegetation prior to disking	LP-2		\$5,000	\$0
CI 3	In-channel island cross disking to facilitate erosion	LP-2		\$15,000	\$7,840
CI 4	Clear Trees & Burn, Bury on Islands of neighboring properties pending mgmt	LP-2		\$25,000	\$65,745

Priority Area: Species Habitat

Item(s): *Whooping Crane Grassland / Wet Meadow Habitat*

No.	Management Activities	Budget Line Item	Completed	Cost (Estimated)	Cost (Actual)
CR 5	Brush, tree, cattail& phrag herbicide spraying	LP-2		\$2,500	\$9,869
CI 6	Tract 2018001 Prescribe burn (361 ac)	LP-2		\$22,021	\$0

Priority Area: Species Habitat

Item(s): *Other Species of Concern*

No.	Management Activities	Budget Line Item	Completed	Cost (Estimated)	Cost (Actual)
CI 7	Habitat and species surveys on properties where work will occur	N/A		N/A	N/A
CI 8	Coordination with USFWS and NGPC to identify and mitigate potential impacts associated with land activities	N/A		N/A	N/A

Priority Area: Operations and Maintenance

Item(s): *Basic Property Maintenance Obligations and Needs*

No.	Management Activities	Budget Line Item	Completed	Cost (Estimated)	Cost (Actual)
CI 9	Fence and road maintenance	LP-4		\$3,000	\$20,088
CI 10	Noxious weed control	LP-4		\$5,000	\$3,619
CI 11	Mowing	LP-4		\$2,500	\$1,575

Priority Area: Operations and Maintenance

Item(s): *Agricultural Operations*

No.	Management Activities	Budget Line Item	Completed	Cost (Estimated)	Cost (Actual)
CI 12	Grazing & Haying lease oversight	N/A		N/A	N/A

2024 Clark Island Complex Budget Summary

Expenditures by Program Budget Line Item

Priority Area	Item	Budget Line Item	Estimated Expenditure	Actual Expenditure
Species Habitat	Improve Target Species Sand and Water Habitat	LP-2	\$45,000	\$73,585
Species Habitat	Whooping Crane Wet Meadow/ Grassland Habitat	LP-2	\$24,521	\$9,869
Subtotal			\$69,521	\$83,454
Operations and Maintenance	Property Maintenance and Agricultural Operations	LP-4	\$10,500	\$25,282
Total			\$80,021	\$108,736

Income

Tract	Item	Estimated Income	Actual Income
Tract 2018001	Accretion & Meadow Grazing Income	\$10,500	\$10,500
Tract 2018001	Irrigated Cropland Cash Rent Income	\$26,000	\$21,750
Tract 2018001	Dryland Cropland Cash Rent Income	\$5,000	\$4,255
Total		\$41,500	\$36,505

2024 Land Budget Expenditure Overview Shoemaker Island Complex

General Priorities

- * **Good Neighbor Policy** - Conduct all actions in accordance with Program's good neighbor policy.

Adaptive Management Priorities

- * **Species Monitoring** – Monitor whooping crane use of palustrine wetlands and in-channel roosting habitat.

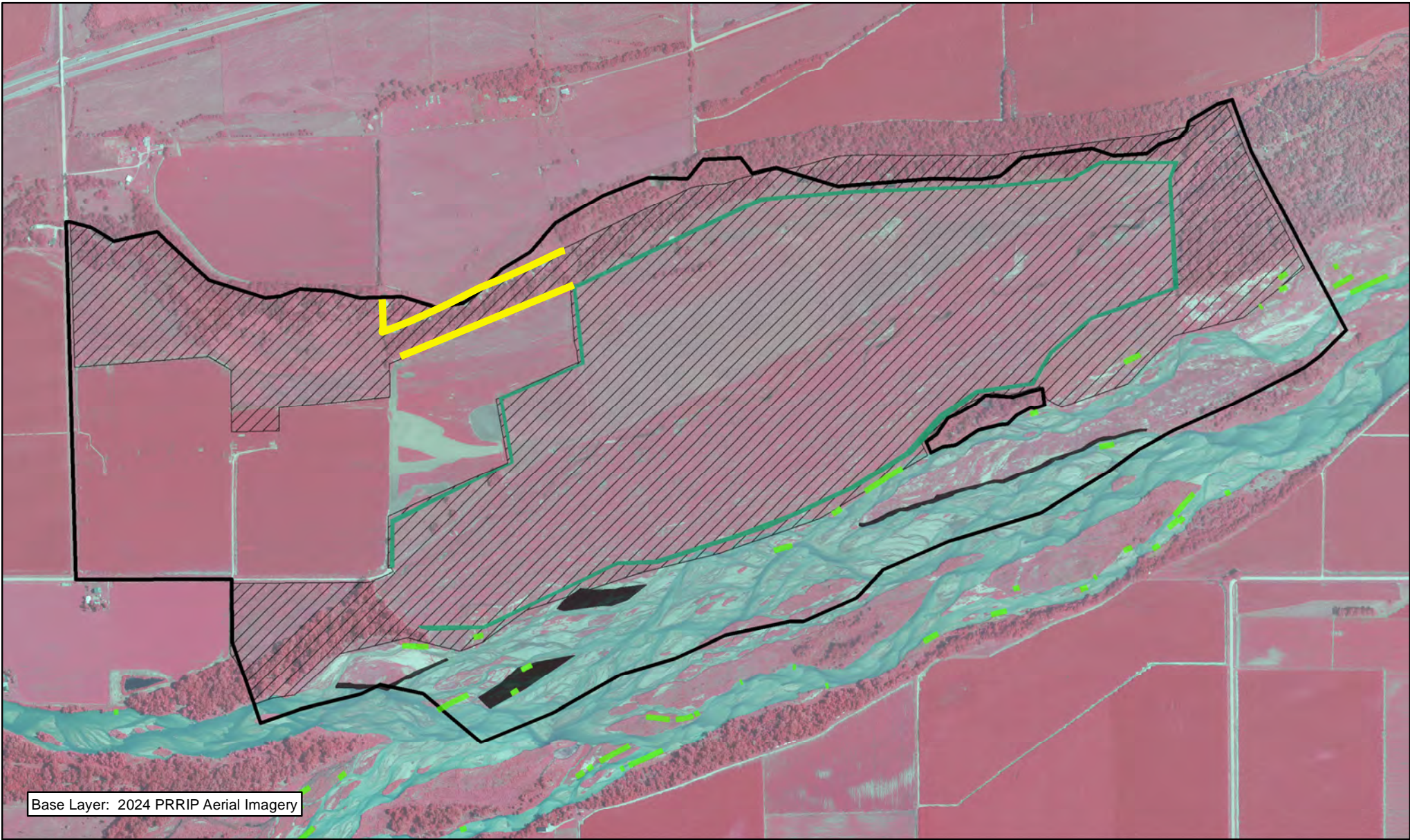
Species Habitat Priorities

- * **Maintain Target Species Sand and Water Habitat** – Control in-channel vegetation to maintain suitable unobstructed view widths for whooping cranes.
- * **Protecting Other Species of Concern** – Identify presence of and determine methods to protect other species of concern during implementation of land-related activities.

* The budget items have been reviewed and

- * **Basic Property Maintenance Obligations and Needs** – Fulfill basic property ownership obligations and needs on Tract 2010004 including fence and road maintenance and noxious weed control.
- * **Agricultural Operations** – Oversight of grazing/ haying leases on Tract 2010004

NOTE: The budget section of this work plan only contains information for work items that are specific to these tracts. As such, tract-specific research and monitoring actions are presented but system-scale actions like target species and geomorphology/vegetation monitoring are not.




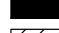
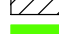



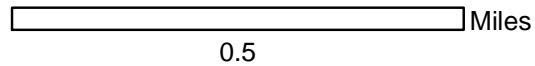
Base Layer: 2024 PRRIP Aerial Imagery



PLATTE RIVER
RECOVERY IMPLEMENTATION PROGRAM

Legend

-  County
-  Barbwire Fence Construction
-  Shredding/Mowing
-  Disking
-  Noxious Weed Control
-  PVWMA Phrag Control



**CLARK ISLAND COMPLEX
FY 2024 ACTIVITIES**

Date: 02/3/2025
By: TRT

Figure 15

Priority Area: General

Item(s): *Complex Land Interest and Complex-Level Planning*

No.	Management Activities	Budget Line Item	Completed	Cost (Estimated)	Cost (Actual)
SI 1	Coordination of Program land actions with neighboring landowners	N/A		N/A	N/A

Priority Area: Species Habitat

Item(s): *Maintain Suitable In- and Off-Channel Sand & Water Habitat*

No.	Management Activities	Budget Line Item	Completed	Cost (Estimated)	Cost (Actual)
SI 2	Inchannel Disking	N/A		\$0	\$8,442

Priority Area: Species Habitat

Item(s): *Whooping Crane Grassland / Wet Meadow Habitat*

No.	Management Activities	Budget Line Item	Completed	Cost (Estimated)	Cost (Actual)
SI 3	Brush, tree, cattail& phrag herbicide spraying	LP-2		\$5,000	\$4,171
SI 4	Tract 2010004- West Hay Meadow Prescribe burn (124 ac)	LP-2		\$7,564	\$0
SI 5	Tract 2010004-East Hay Meadow Prescribe burn (30 ac)	LP-2		\$1,830	\$0
SI 6	Tract 2010004-South Meadow Prescribe burn (57 ac)	LP-2		\$3,477	\$0
SI 7	Tract 2010004-West Pasture Prescribe burn (171 ac)	LP-2		\$10,431	\$0
SI 8	Tract 2010004-East pasture Prescribe burn (137 ac)	LP-2		\$8,357	\$0

Priority Area: Species Habitat

Item(s): *Other Species of Concern*

No.	Management Activities	Budget Line Item	Completed	Cost (Estimated)	Cost (Actual)
SI 9	Habitat and species surveys on properties where work will occur	N/A		N/A	N/A
SI 10	Coordination with USFWS and NGPC to identify and mitigate potential impacts associated with land activities	N/A		N/A	N/A

Priority Area: Operations and Maintenance

Item(s): *Basic Property Maintenance Obligations and Needs*

No.	Management Activities	Budget Line Item	Completed	Cost (Estimated)	Cost (Actual)
SI 11	Fence and road maintenance	LP-4		\$1,000	\$1,209
SI 12	Noxious weed control	LP-4		\$2,500	\$264
SI 13	Mowing	LP-4		\$3,000	\$1,225
SI 14	Tract2010004 Electricity	LP-4		\$200	\$0

Priority Area: Operations and Maintenance

Item(s): *Agricultural Operations*

No.	Management Activities	Budget Line Item	Completed	Cost (Estimated)	Cost (Actual)
SI 15	Grazing & Haying lease oversight	N/A		N/A	N/A

2024 Shoemaker Island Complex Budget Summary

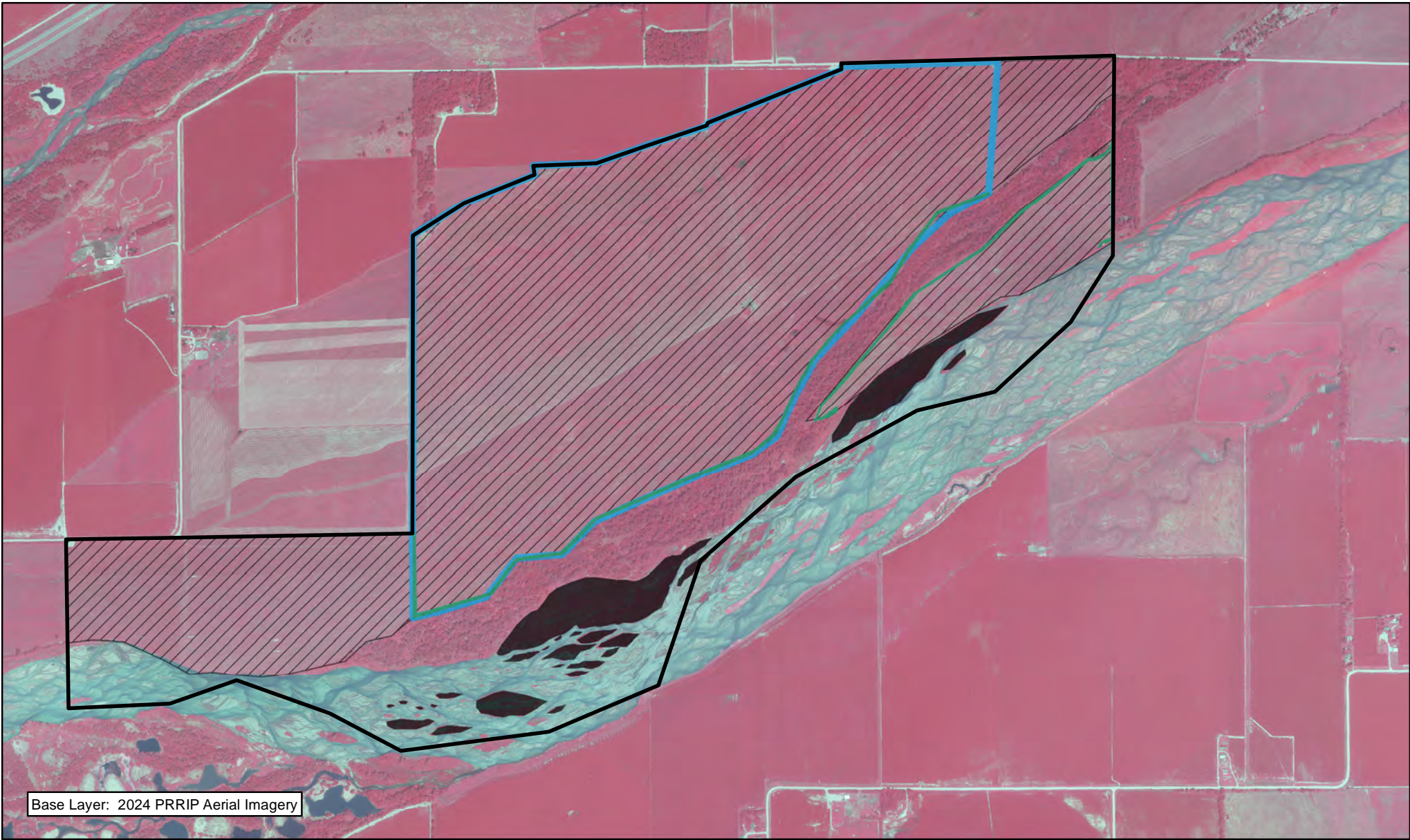
Expenditures by Program Budget Line Item

Priority Area	Item	Budget Line Item	Estimated Expenditure	Actual Expenditure
Species Habitat	Improve Target Species Sand and Water Habitat	LP-2	\$0	\$8,442
Species Habitat	Whooping Crane Wet Meadow/ Grassland Habitat	LP-2	\$36,659	\$4,171
Subtotal			\$36,659	\$12,613

Operations and Maintenance	Property Maintenance and Agricultural Operations	LP-4	\$6,700	\$2,698
Total			\$43,359	\$15,311

Income

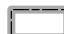





Tract	Item	Estimated Income	Actual Income
Tract 2010004	Grazing & Haying Income	\$43,000	\$24,705
Total		\$43,000	\$24,705

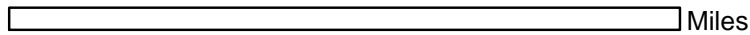


Base Layer: 2024 PRRIP Aerial Imagery



Legend

-  County
-  Cattail/Phragmites Spraying
-  Shredding/Mowing
-  Disking
-  Noxious Weed Control
-  PVWMA Phrag Control



**SHOEMAKER ISLAND
COMPLEX
FY 2024 ACTIVITIES**

Date: 02/3/2025

By: TRT

Figure 16

2024 Land Budget Expenditure Overview Chapman Complex

General Priorities

- * **Good Neighbor Policy** - Conduct all actions in accordance with Program's good neighbor policy.

Adaptive Management Priorities

- * **Whooping Crane Riverine Habitat** – Design and implement vegetation clearing to provide a range of unobstructed view widths above the Programs minimums
- * **Species Monitoring** – Monitor whooping crane use of palustrine wetlands and in-channel roosting habitat.

Species Habitat Priorities

- * **Improve Target Species Sand and Water Habitat** – Control in-channel vegetation to maintain suitable unobstructed view widths for whooping cranes.
- * **Protecting Other Species of Concern** – Identify presence of and determine methods to protect other species of concern during implementation of land-related activities.

* The budget items have been reviewed and approved by the LAC on October 18, 2023

Operations and Maintenance Priorities

- * **Basic Property Maintenance Obligations and Needs** – Fulfill basic property ownership obligations and needs on Tracts including fence and road maintenance and noxious weed control. Remove unnecessary buildings on Tract 2021001.
- * **Agricultural Operations** – Oversight of grazing/ haying and cropland leases

NOTE: The budget section of this work plan only contains information for work items that are specific to these tracts. As such, tract-specific research and monitoring actions are presented but system-scale actions like target species and geomorphology/vegetation monitoring are not.

Priority Area: General

Item(s): *Complex Land Interest and Complex-Level Planning*

No.	Management Activities	Budget Line Item	Completed	Cost (Estimated)	Cost (Actual)
CC 1	Coordination of Program land actions with neighboring landowners	N/A		N/A	N/A

Priority Area: Species Habitat

Item(s): *Improve Target Species Sand and Water Habitat*

No.	Management Activities	Budget Line Item	Completed	Cost (Estimated)	Cost (Actual)
CC 2	Herbicide treatment on south bank to kill vegetation prior to disking	LP-2		\$3,000	\$0
CC 3	In-channel island cross disking to facilitate erosion	LP-2		\$15,000	\$6,908

Priority Area: Species Habitat

Item(s): *Whooping Crane Grassland / Wet Meadow Habitat*

No.	Management Activities	Budget Line Item	Completed	Cost (Estimated)	Cost (Actual)
CC 4	Brush, tree, cattail& phrag herbicide spraying	LP-2		\$2,500	\$0

Priority Area: Species Habitat*Item(s): Other Species of Concern*

No.	Management Activities	Budget Line Item	Completed	Cost (Estimated)	Cost (Actual)
CC 5	Habitat and species surveys on properties where work will occur	N/A		N/A	N/A
CC 6	Coordination with USFWS and NGPC to identify and mitigate potential impacts associated with land activities	N/A		N/A	N/A

Priority Area: Operations and Maintenance*Item(s): Basic Property Maintenance Obligations and Needs*

No.	Management Activities	Budget Line Item	Completed	Cost (Estimated)	Cost (Actual)
CC 7	Tract 2021001 Homesite Demo	LP-4		\$100,000	\$210
CC 8	Fence and road maintenance	LP-4		\$25,000	\$33,203
CC 9	Noxious weed control	LP-4		\$2,500	\$388
CC 10	Mowing	LP-4		\$3,000	\$1,925

Priority Area: Operations and Maintenance*Item(s): Agricultural Operations*

No.	Management Activities	Budget Line Item	Completed	Cost (Estimated)	Cost (Actual)
CC 11	Tract 2019001 grazing lease oversight	N/A		N/A	N/A
CC 12	Tract 2021001 grazing lease oversight	N/A		N/A	N/A
CC 13	Tract 2021001 crop lease oversight	N/A		N/A	N/A

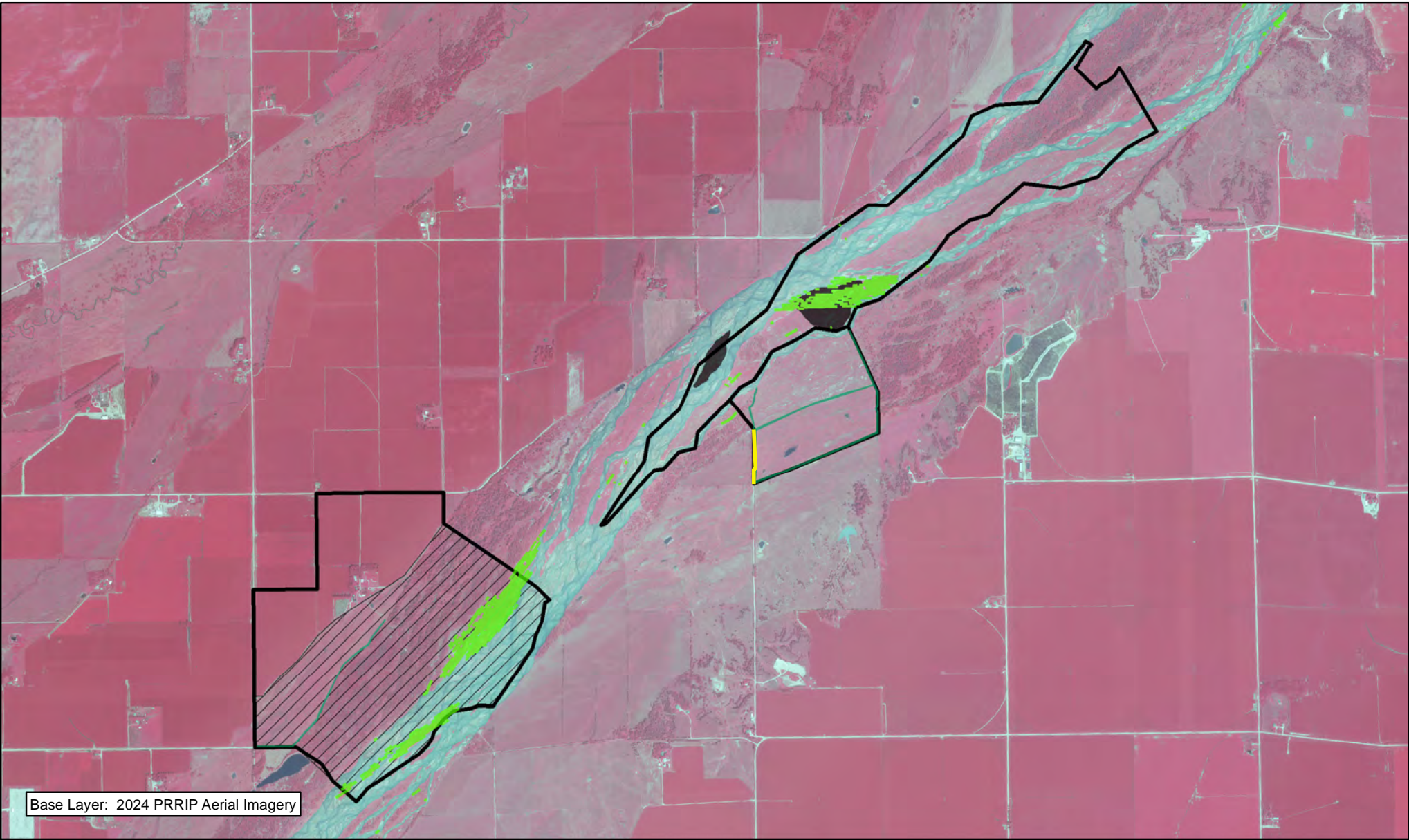
2024 Chapman Complex Budget Summary

Expenditures by Program Budget Line Item

Priority Area	Item	Budget Line Item	Estimated Expenditure	Actual Expenditure
Species Habitat	Improve Target Species Sand & Water Habitat	LP-2	\$18,000	\$6,908
Species Habitat	Whooping Crane Wet Meadow/ Grassland Habitat	LP-2	\$2,500	\$0
		Subtotal	\$20,500	\$6,908
Operations and Maintenance	Property Maintenance and Agricultural Operations	LP-4	\$130,500	\$35,726
		Total	\$151,000	\$42,634

Income

Tract	Item	Estimated Income	Actual Income
Tract 2019001	Grazing lease	\$0	\$0
Tract 2021001	Grazing lease-estimate	\$0	\$5,000
Tract 2021001	Building & Grain Bin Rent	\$3,500	\$0
Tract 2021001	Irrigated Crop lease-estimate	\$40,000	\$41,250
		Total	\$46,250



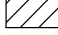




Base Layer: 2024 PRRIP Aerial Imagery



PLATTE RIVER
RECOVERY IMPLEMENTATION PROGRAM

Legend

-  Shredding/Mowing
-  Disking
-  Noxious Weed Control
-  PVWMA Phrag Control
-  Barbwire Fence Construction



1.5 Miles

1.5

**CHAPMAN
COMPLEX
FY 2024 ACTIVITIES**

Date: 02/3/2025

By: TRT

Figure 17

2024 Land Budget Expenditure Overview Water Tracts

General Priorities

- * **Good Neighbor Policy** - Conduct all actions in accordance with Program's good neighbor policy.

Operations and Maintenance Priorities

- * **Basic Property Maintenance Obligations and Needs** – Fulfill basic property ownership obligations and needs on Tracts W2016002, W2017001, W2017002 & W201703 including fence and road maintenance, irrigation management and noxious weed control.
- * **Agricultural Operations** – Oversight of grazing/ haying lease on Tract W2016002

Priority Area: General

Item(s): *Complex Land Interest and Complex-Level Planning*

No.	Management Activities	Budget Line Item	Completed	Cost (Estimated)	Cost (Actual)
1	Coordination of Program land actions with neighboring landowners	N/A		N/A	N/A

Priority Area: Operations and Maintenance

Item(s): *Basic Property Maintenance Obligations and Needs*

No.	Management Activities	Budget Line Item	Completed	Cost (Estimated)	Cost (Actual)
WP 2	Fence and road maintenance	WPLW-1		\$1,000	\$0
WP 3	Noxious weed control	WPLW-1		\$8,000	\$0
WP 4	Mowing	WPLW-1		\$1,000	\$0
WP 5	Tracts W2016002 Electricity	WPLW-1		\$100	\$0
WP 6	Taxes	WPLW-1		\$10,500	\$0

Priority Area: Operations and Maintenance

Item(s): *Agricultural Operations*

No.	Management Activities	Budget Line Item	Completed	Cost (Estimated)	Cost (Actual)
WP 7	Tract W201602 Lease Oversight	WPLW-1		N/A	

2024 Water Tracts Budget Summary

Expenditures by Program Budget Line Item

Priority Area	Item	Budget Line Item	Estimated Expenditure	Actual Expenditure
Operations and Maintenance	Property Maintenance and Agricultural Operations	WPLW-1	\$20,600	\$0
Total			\$20,600	\$0

Income

Tract	Item	Estimated Income	Actual Income
Tract W201602	Crop Income	\$10,500	\$11,230
Total		\$10,500	\$11,230