

2025 Land Budget Expenditure Overview

Platte River Recovery Implementation Program

Land Budget Overview By Budget Line Item

Budget Line Item	Description	Estimated Expenditure	Actual Expenditure
LP-2	Adaptive Management Species Habitat Actions	\$567,000	\$363,725
LP-3	New Land Acquisitions, LHIE Fees, & Property Taxes	\$1,326,000	\$95,055
LP-4	Property Maintenance & Agricultural Operations	\$365,500	\$141,521
LP-6	Land Plan Special Advisors	\$25,000	\$14,734
LP-7	Public Access Management	\$40,000	\$40,000
Total		\$2,323,500	\$655,035

Budget Overview By Complex

Complex	Estimated Expenditure	Actual Expenditure	Estimated Income	Actual Income
Non-Complex Tracts	\$161,000	\$116,448	\$16,802	\$16,387
Plum Creek "Complex"	\$42,348	\$22,979	\$7,095	\$7,097
Cottonwood Ranch Complex	\$122,842	\$125,617	\$22,255	\$18,944
Elm Creek Complex	\$54,634	\$44,058	\$16,758	\$15,882
Pawnee Complex	\$41,000	\$23,948	\$3,824	\$3,824
Fort Kearny Complex	\$79,841	\$33,079	\$30,700	\$27,107
Minden-Gibbon Complex	\$30,000	\$56,937	\$0	\$0
Clark Island Complex	\$81,225	\$23,388	\$36,505	\$35,510
Shoemaker Island Complex	\$54,831	\$7,588	\$25,500	\$13,533
Chapman Complex	\$264,779	\$51,204	\$55,140	\$46,715
Total	\$932,500	\$505,246	\$214,579	\$184,999

Budget Priority Areas by Budget Line Item

LP-2 – Adaptive Management Species Habitat Actions: Species habitat priorities are focused on creation and maintenance of suitable complex and non-complex habitat for Program target species. Includes Habitat

LP-3 – New Land Acquisitions: Land acquisition priorities include identification and acquisition of lands for construction of an additional 60 acres of off-channel sand and water habitat for least tern and piping plover nesting habitat and identification and acquisition of lands that could count towards the First Increment Extension habitat

LP-4 – Property Maintenance & Agricultural Operations: Priorities include maintenance of basic land infrastructure such as facilities, roads, and fences as well as fulfilling basic ownership obligations like noxious weed control and

LP-6 – Land Plan Special Advisors: Priorities for special advisors include administration of agricultural leases and associated FSA obligations, crop management and marketing, and assistance in cropland conversions.

LP-7 – Public Access Management: Nebraska Game and Parks Commission will manage public access to Program

Property Identification Key:

2008001 – PRRIP Wyoming Property
2008002 - NPPD Cottonwood Ranch
2009001 – PRRIP Fox Tract
2009002 – PRRIP Bartels Tract
2009003 - PRRIP Dyer Tract
2009004 – PRRIP Hostetler Tract
2009005 – PRRIP McCormick Tract
2009006 - PRRIP Stall Tract
2009007 - PRRIP Cook Tract
2009008 - PRRIP Broadfoot Newark Tract
2010001 - PRRIP Morse Tract
2010003 – PRRIP Sherrerd/Clark Easement
2010004 – PRRIP Binfield Tract
2011001 - PRRIP East Leaman Tract
2011002 - PRRIP Follmer Alda Tract
2012001 – PRRIP Sullwold Tract
2012002 – PRRIP Johns Tract
2012003 – PRRIP Blessing Tract
2012004 - PRRIP DeBore Tract
2013001 - PRRIP Liehs Tract
2014002 - PRRIP Volentine Tract
2015001 – PRRIP Speidell Tract
2015002 - PRRIP BELF Tract
2015003 – PRRIP Blue Hole East
2018001 – PRRIP Dippel Tract
2019001 – PRRIP Robinson Tract
2020001 – PRRIP Bergren Tract
2020002 - PRRIP Lex Pit Tract
2021001 – PRRIP Meyer Tract
2024001- PRRIP Broadfoot South Tract
2024002 – PRRIP Lindstrom Tract

W201701 – PRRIP Edlund Tract
W201702 - PRRIP Albrecht Tract
W201703 - PRRIP Lakeside Tract

Personnel Responsibility Key

MH – Malinda Henry (Director of Biological and Ecological Services)
JJ – Jim Jenniges (NPPD)
TT – Tim Tunnell (Senior Land Manager)
ST – Seth Turner (Senior Water Resources Engineer)
EW – Ed Weschler (Water Resources Engineer)

Land Budget Overview By Priority Area

LP-2	Priority Area: Species Habitat		Total	Expenditure
	Item(s): Maintain Suitable In- and Off-Channel Sand & Water Habitat	Herbicide applications on OCSW peninsulas to maintain bare sand nesting habitat	\$33,500	\$41,484.00
		OCSW Rehabilitation	\$100,000	\$76,889.75
		Inchannel Tree Clearing	\$50,000	\$69,629.00
		Cedar Removal	\$15,000	\$11,100.00
		Maintenance of Predator Exclusion Fencing	\$30,000	\$8,840.00
		In-channel tree. Cattail, herbicide spraying	\$2,000	\$0.00
	Item(s): <i>Improve Target Species Sand and Water Habitat</i>	Herbicide treatment on south bank to kill vegetation	\$17,000	\$12,215.00
		Disking if necessary to provide in-channel vegetation	\$87,000	\$91,005.00
	Item(s): <i>Maintain Suitable Palustrine Wetland Habitat</i>	Brush, tree, cattail & phrag herbicide spraying	\$32,500	\$10,393.00
		Prescribed Burning	\$200,000	\$42,330.00
Total			\$567,000	\$363,885.75

LP-3	Priority Area: Land Acquisitions , LHIE Fees, & Property Taxes		Total	Expenditure
	Item(s): Land Acquisition, Property Taxes and Associated Fees	Land interest holding entity (LIHE)	\$80,000	\$46,359.00
		Land Acquisition Associated Costs	\$46,000	\$1,696.00
		Buy, Lease or Easement (200 acres)	\$1,200,000	\$47,000.00
Total			\$1,326,000	\$95,055.00

LP-4	Priority Area: Operations and Maintenance		Total	Expenditure
	Item(s): Basic Property Maintenance Obligations and Needs	Tract 2021001 Homesite Demo	\$200,000	\$0.00
		Fence & Road Maintenance	\$66,500	\$74,862.00
		Noxious Weed Control	\$58,500	\$48,284.00
		Mowing	\$40,500	\$18,375.00
Total			\$365,500	\$141,521.00

2025 Land Budget Expenditure Overview Non-Complex Tracts

General Priorities

- * **Good Neighbor Policy** - Conduct all actions in accordance with Program's good neighbor policy.

Adaptive Management Priorities

- * **Species Monitoring** – Monitor whooping crane use of non-complex palustrine wetlands and least tern and piping plover use and productivity at off-channel sand and water nesting sites.

Species Habitat Priorities

- * **Maintain Suitable Off-Channel Sand and Water Nesting Habitat** – Apply pre-emergent herbicide on Tracts 2009008, 2010002, 2011001, 2011002 and 2020002 OCSW nesting habitat to prevent vegetation encroachment into nesting areas.
 - * **Maintain Suitable Palustrine Wetland Roosting Habitat** – Manage vegetation height in the palustrine wetland areas of Tracts 2012004 and 2013001 to maintain suitable unobstructed view widths for whooping crane roosting.
- Protecting Other Species of Concern** – Identify presence of and determine methods to protect other species of concern during implementation of land-related activities.

Operations and Maintenance Priorities

- * **Basic Property Maintenance Obligations and Needs** – Fulfill basic property ownership obligations and needs including boundary fence signage, road maintenance, and noxious weed control.
- * **Agricultural Operations** – Oversight of crop leases on Tracts 2009008, 2012004 and 2013001 and hay lease on Tract 2011001.
- * **Sand and Gravel Mining Operations** – Monitor sand and gravel mining operations on Tracts 2009008 and 2011002.

NOTE: The budget section of this work plan only contains information for work items that are specific to these tracts. As such, tract-specific research and monitoring actions are presented but system-scale actions like target species and geomorphology/vegetation monitoring are not.

Priority Area: *General***Item(s):** *Land Interest and Tract-Level Restoration and Maintenance Planning*

No.	Management Activities	Budget Line Item	Completed	Cost (Estimated)	Cost (Actual)
NC 1	Coordination of Program land actions with neighboring landowners	N/A	Yes	N/A	N/A

Priority Area: *Species Habitat***Item(s):** *Maintain Suitable In- and Off-Channel Sand & Water Habitat*

No.	Management Activities	Budget Line Item	Completed	Cost (Estimated)	Cost (Actual)
NC 2	Herbicide applications on OCSW peninsulas to maintain bare sand nesting habitat (79 ac)	LP-2	Yes	\$25,000	\$26,915
NC 3	Installation & Maintenance of Predator Exclusion Fencing	LP-2	Yes	\$15,000	\$8,840
NC 4	Dredge out north slough on East Leaman (Tract 2011001)*	LP-2	Yes	\$50,000	\$39,375
NC 5	Clear and smooth sand on east side of OSG Lex pit (Tract 2022002)**	LP-2	Yes	\$50,000	\$37,515

* work completed on Tracts 2011002 & Tract 2024001

** work completed on Tract 2009008

Priority Area: *Species Habitat***Item(s):** *Maintain Suitable Palustrine Wetland Habitat*

No.	Management Activities	Budget Line Item	Completed	Cost (Estimated)	Cost (Actual)
NC 6	Brush, tree, cattail herbicide spraying	LP-2	No	\$3,000	\$0

Priority Area: *Species Habitat***Item(s):** *Other Species of Concern*

No.	Management Activities	Budget Line Item	Completed	Cost (Estimated)	Cost (Actual)
NC 7	Habitat and species surveys on properties where work will occur	N/A	Yes	N/A	N/A
NC 8	Coordination with USFWS and NGPC to identify and mitigate potential impacts associated with land activities	N/A	Yes	N/A	N/A

Priority Area: Operations and Maintenance**Item(s):** *Basic Property Maintenance Obligations and Needs*

No.	Management Activities	Budget Line Item	Completed	Cost (Estimated)	Cost (Actual)
NC 9	Fence and road maintenance	LP-4	No	\$3,000	\$0
NC 10	Noxious weed control	LP-4	Yes	\$5,000	\$1,353
NC 11	Mowing	LP-4	Yes	\$10,000	\$2,450

Priority Area: Operations and Maintenance**Item(s):** *Agricultural Operations*

No.	Management Activities	Budget Line Item	Completed	Cost (Estimated)	Cost (Actual)
NC 12	Oversight of grazing and cropland	N/A	Yes	N/A	N/A
NC 13	Oversight of sand and gravel mining	N/A	Yes	N/A	N/A

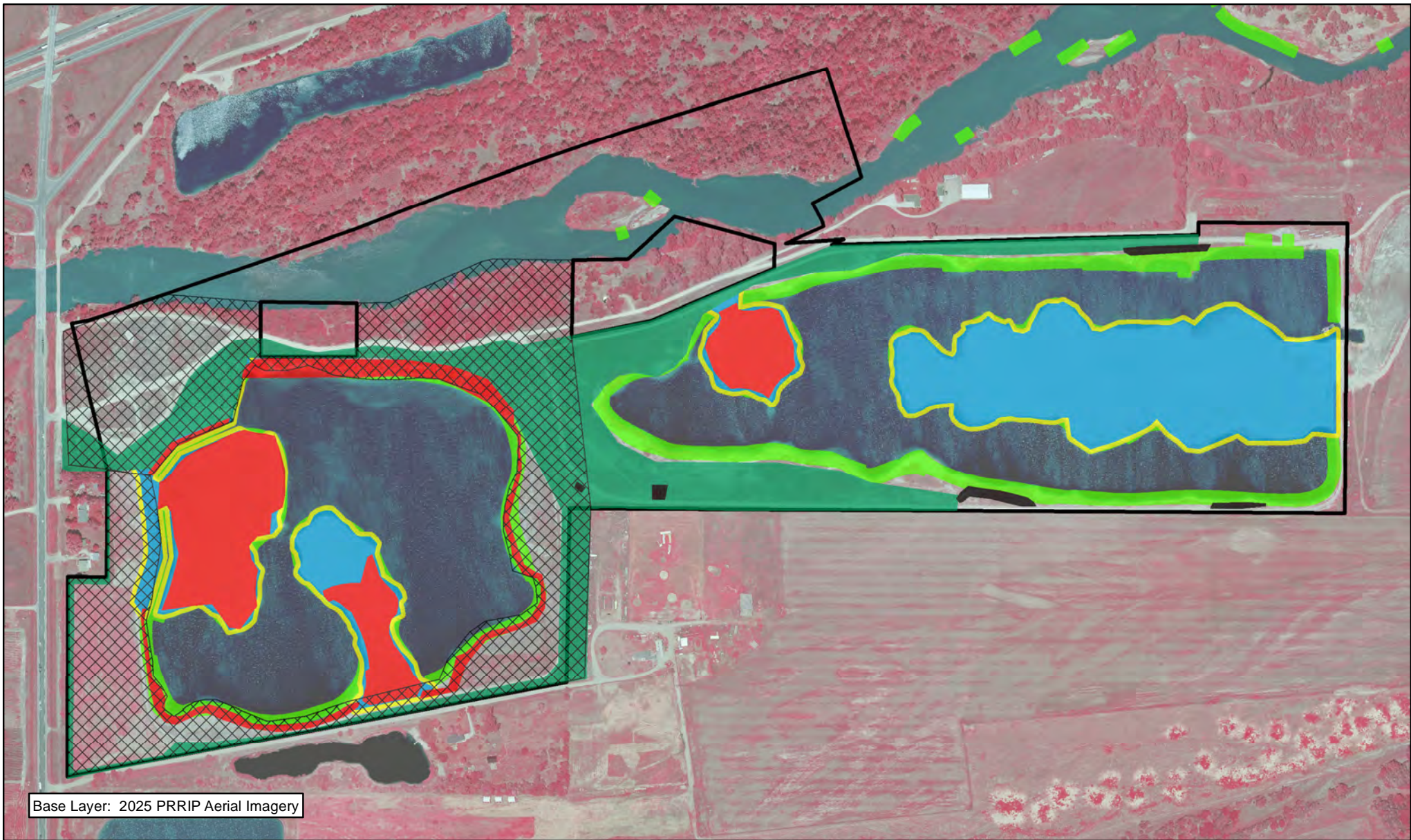
2025 Non-Complex Tracts Budget Summary

Expenditures by Program Budget Line Item








Priority Area	Item	Budget Line Item	Estimated Expenditure	Actual Expenditure
Species Habitat	Maintain Off-Channel Sand & Water Habitat	LP-2	\$140,000	\$112,645
Species Habitat	Create & Maintain Palustrine Wetland Habitat	LP-2	\$3,000	\$0
Subtotal			\$143,000	\$112,645
Operations and Maintenance	Property Maintenance and Agricultural Operations	LP-4	\$18,000	\$3,803
Total			\$161,000	\$116,448

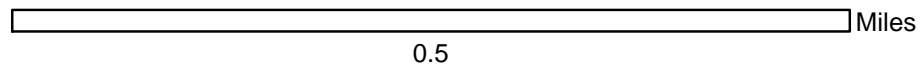
Income

Tract	Item	Estimated Income	Actual Income
Tract 2009008	Hay Income	\$750	\$750
Tract 2011001	Hay Income	\$800	\$325
Tract 2012004	Cropland Cash Rent Income	\$3,900	\$3,450
Tract 2012004	Grazing Income	\$0	\$0
Tract 2013001	Irr. Cropland Cash Rent Income	\$7,260	\$7,770
Tract 2013001	Dry Cropland Cash Rent Income	\$4,092	\$4,092
Total		\$16,802	\$16,387



Legend

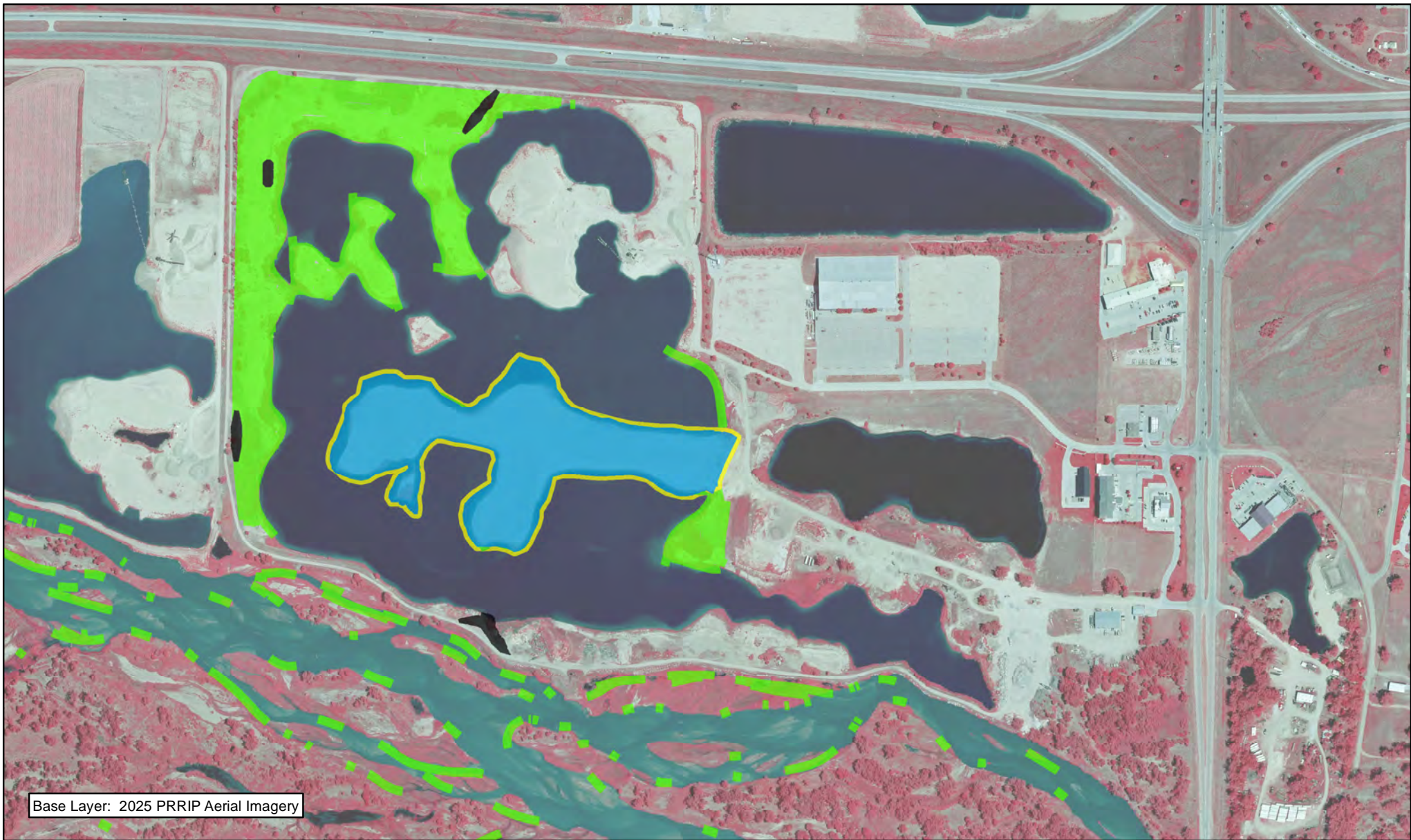
-  Monitoring Berm Const.
-  Clear & Smooth
-  Roundup Herbicide
-  Noxious Weed Control
-  PVWMA Phrag Control
-  Preemergent
-  Shredding/Mowing







NON-COMPLEX
TRACT 2009008
FY 2025 ACTIVITIES

Date: 01/27/2026
By: TRT


Figure 1



Legend

-  Monitoring Berm Const.
-  PVWMA Phrag Control
-  Preemergent
-  RoundupHerbicide



 0.3 Miles

NON-COMPLEX
TRACT 2010002
FY 2025 ACTIVITIES

Date: 01/27/2026
By: TRT






Figure 2




Base Layer: 2025 PRRIP Aerial Imagery



Legend

-  Disking
-  Noxious Weed Control
-  Roundup Nerbicide
-  PVWMA Phrag Control
-  Preemergent

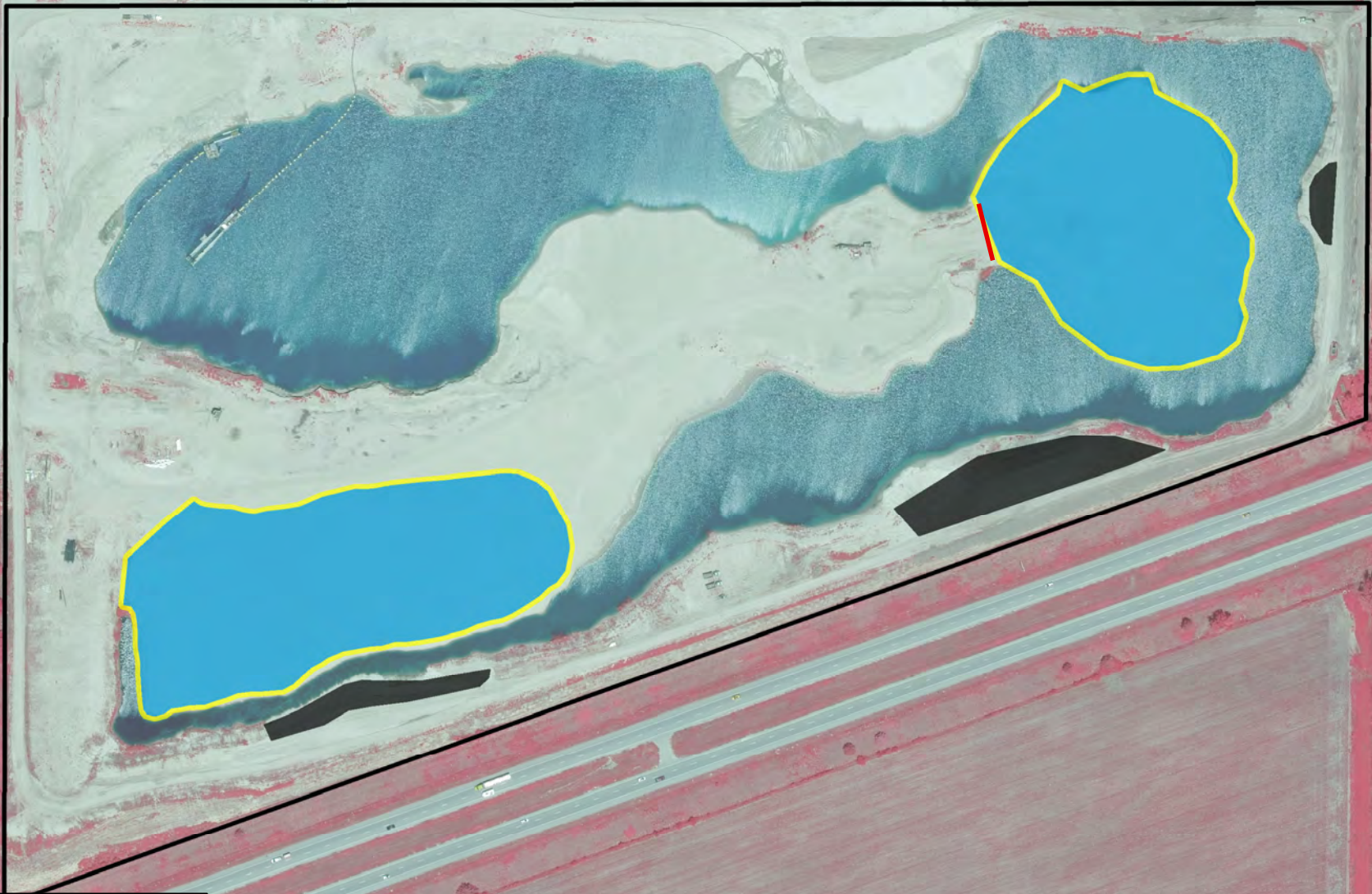


 Miles
0.5

NON-COMPLEX
TRACT 2011001
FY 2025 ACTIVITIES

Date: 01/27/2026
By: TRT





Figure 3




Base Layer: 2025 PRRIP Aerial Imagery



Legend

-  <all other values>
-  Road Maintenance
-  Herbicide
-  Preemergent

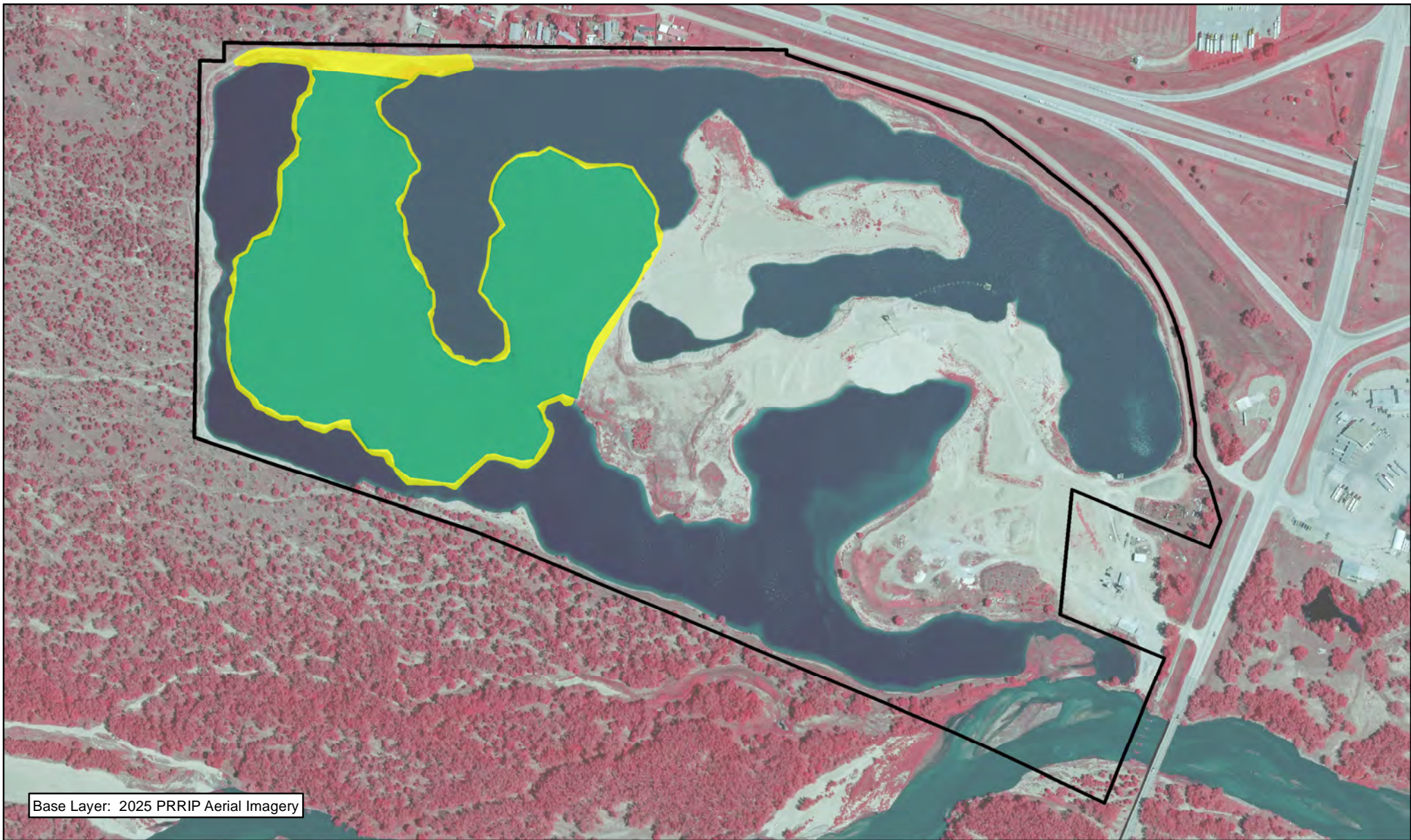


 Miles
0.1

NON-COMPLEX
TRACT 2011002
FY 2025 ACTIVITIES

Date: 01/27/2026
By: TRT

Figure 4





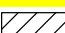


Base Layer: 2025 PRRIP Aerial Imagery


Legend



PLATTE RIVER
RECOVERY IMPLEMENTATION PROGRAM

-  <all other values>
-  Chemical
-  Roundup Herbicide
-  Preemergent
-  Noxious Weed Control



 Miles
0.25

NON-COMPLEX
TRACT 2020002
FY 2025 ACTIVITIES

Date: 01/27/2026
By: TRT


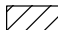
Figure 5




Base Layer: 2025 PRRIP Aerial Imagery



Legend

-  Shredding/Mowing
-  Noxious Weed Control

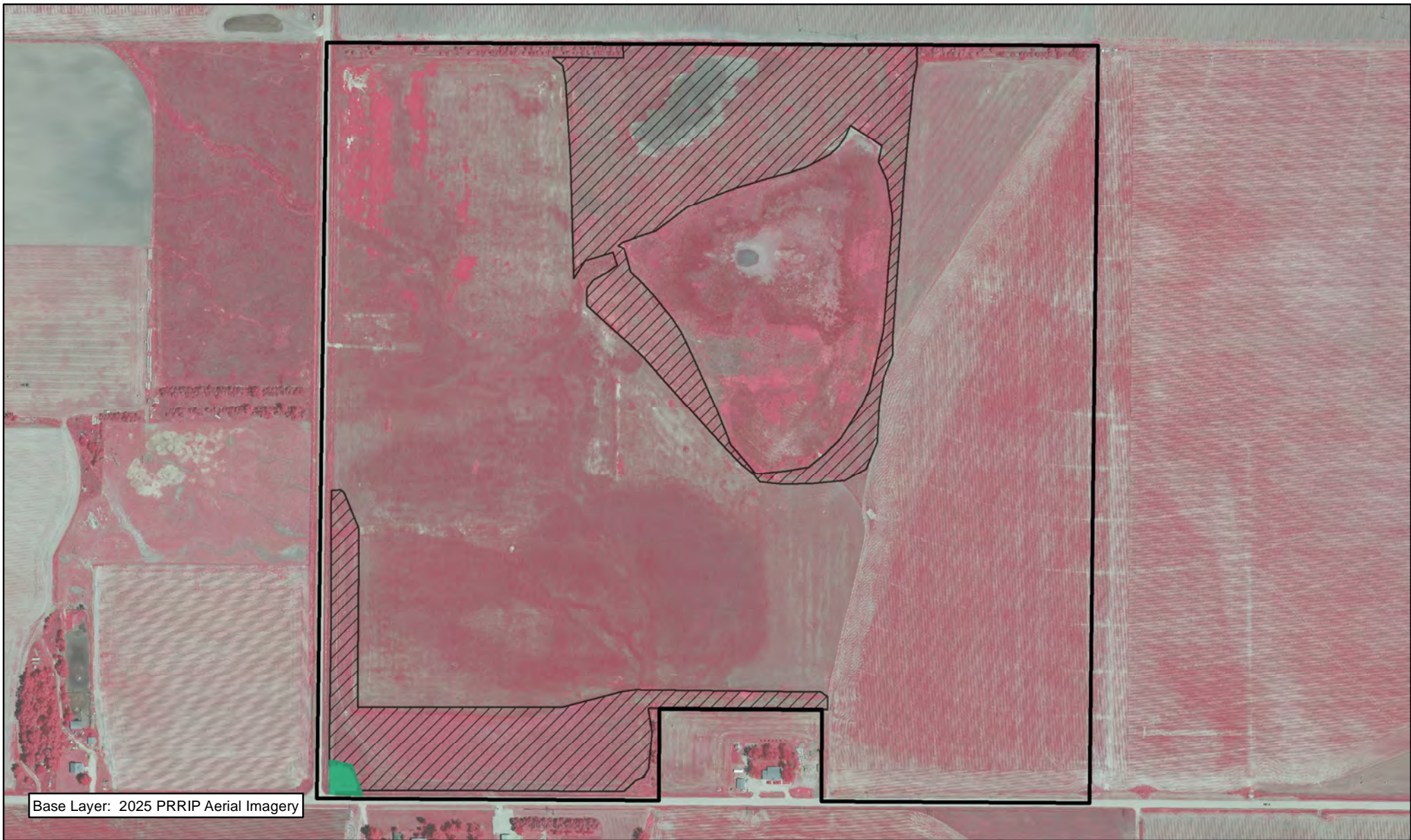


 0.2 Miles

NON-COMPLEX
TRACT 2012004
FY 2025 ACTIVITIES

Date: 01/27/2026
By: TRT



Figure 6




Base Layer: 2025 PRRIP Aerial Imagery



Legend

-  Shredding/Mowing
-  Noxious Weed Control

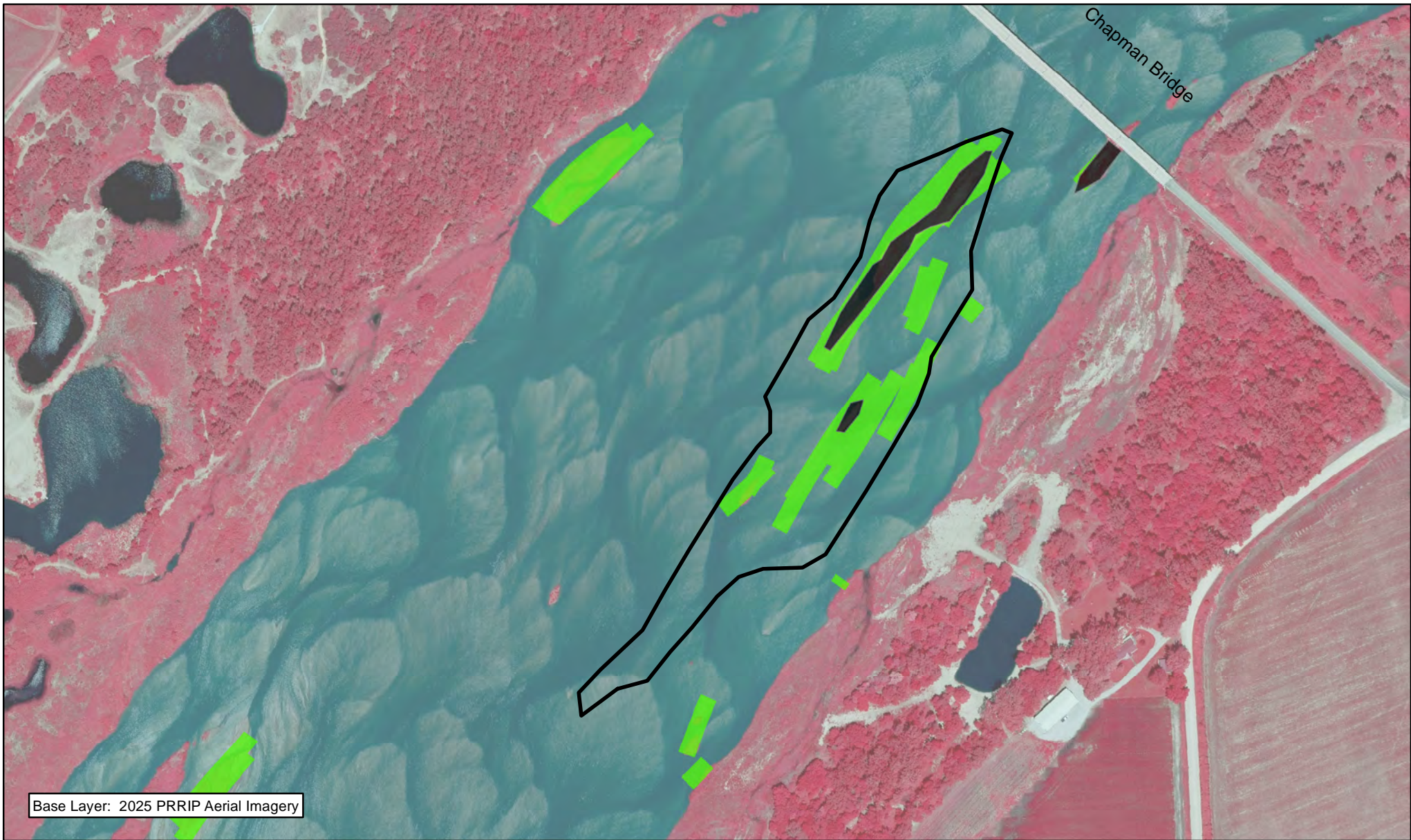


 0.2 Miles



NON-COMPLEX
TRACT 2013001
FY 2025 ACTIVITIES

Date: 01/27/2026
By: TRT

Figure 7



Legend

-  PVWMA Phrag Control
-  Disking



0.15 Miles

A horizontal scale bar with the number '0.15' and the word 'Miles' to its right.

NON-COMPLEX
MCA ISLAND
FY 2025 ACTIVITIES

Date:01/27/2026
By: TRT

Figure 8

2025 Land Budget Expenditure Overview Plum Creek Complex

General Priorities

- * **Good Neighbor Policy** - Conduct all actions in accordance with Program's good neighbor policy.

Adaptive Management Priorities

- * **Species Monitoring** – Monitor whooping crane use of riverine roosting habitat and least tern and piping plover use and productivity at off-channel sand and water nesting sites.

Species Habitat Priorities

- * **Improve Target Species Sand and Water Habitat** – Application of pre-emergent herbicide on OCSW peninsulas to maintain tern and plover nesting habitat. Control in-channel vegetation to maintain suitable unobstructed view widths for whooping cranes.
- * **Protecting Other Species of Concern** – Identify presence of and determine methods to protect other species of concern during implementation of land-related activities.

Operations and Maintenance Priorities

- * **Basic Property Maintenance Obligations and Needs** – Fulfill basic property ownership obligations and needs including boundary fence signage, road maintenance, and noxious weed control.
- * **Agricultural Operations** – Oversight of grazing lease on Tract 2009003. Oversight of cropland/hay leases on Tract 2009007.

NOTE: The budget section of this work plan only contains information for work items that are specific to these tracts. As such, tract-specific research and monitoring actions are presented but system-scale actions like target species and geomorphology/vegetation monitoring are not.

Priority Area: General**Item(s):** *Complex Land Interest and Complex-Level Planning*

No.	Management Activities	Budget Line Item	Completed	Cost (Estimated)	Cost (Actual)
PC 1	Coordination of Program land actions with neighboring landowners	N/A	Yes	N/A	N/A

Priority Area: *Species Habitat***Item(s):** *Maintain Suitable In- and Off-Channel Sand & Water Habitat*

No.	Management Activities	Budget Line Item	Completed	Cost (Estimated)	Cost (Actual)
PC2	Herbicide applications on OCSW peninsulas to maintain bare sand nesting habitat (21 ac)	LP-2	Yes	\$5,000	\$7,538
PC 3	Maintain blow sand from predator fences	LP-2	Yes	\$15,000	\$2,111
PC 3.5	In-channel Disking	LP-2	Yes	\$0	\$4,393

Priority Area: *Species Habitat***Item(s):** *Whooping Crane Grassland / Wet Meadow Habitat*

No.	Management Activities	Budget Line Item	Completed	Cost (Estimated)	Cost (Actual)
PC 4	Brush, tree, cattail & phrag herbicide spraying	LP-2	Yes	\$1,500	\$1,135
PC 5	Tract 2009003 Prescribed burn (101 ac)	LP-2	No	\$7,368	\$0
PC 6	Tract 2009007 Prescribed burn (48 ac)	LP-2	No	\$3,480	\$0

Priority Area: *Species Habitat***Item(s):** *Other Species of Concern*

No.	Management Activities	Budget Line Item	Completed	Cost (Estimated)	Cost (Actual)
PC 7	Habitat and species surveys on properties where work will occur	N/A	Yes	N/A	N/A
PC 8	Coordination with USFWS and NGPC to identify and mitigate potential impacts associated with land activities	N/A	Yes	N/A	N/A

Priority Area: Operations and Maintenance**Item(s):** *Basic Property Maintenance Obligations and Needs*

No.	Management Activities	Budget Line Item	Completed	Cost (Estimated)	Cost (Actual)
PC 9	Fence and road maintenance	LP-4	Yes	\$1,500	\$1,612
PC 10	Noxious weed control	LP-4	Yes	\$3,500	\$2,340
PC 11	Mowing	LP-4	Yes	\$5,000	\$3,850

Priority Area: Operations and Maintenance**Item(s):** *Agricultural Operations*

No.	Management Activities	Budget Line Item	Completed	Cost (Estimated)	Cost (Actual)
PC 12	Oversight of grazing and cropland leases	N/A	Yes	N/A	N/A

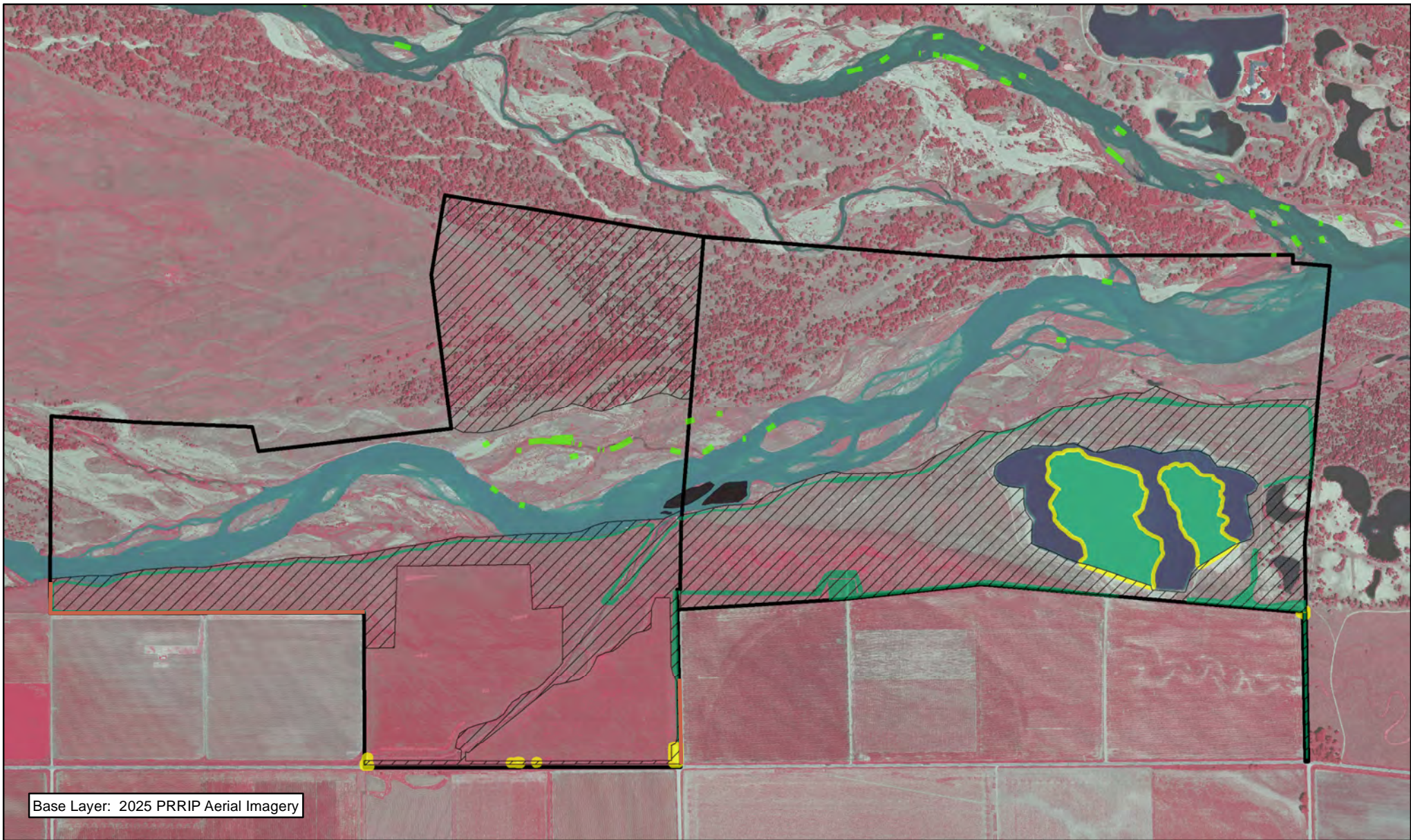
2025 Plum Creek Complex Budget Summary

Expenditures by Program Budget Line Item

Priority Area	Item	Budget Line Item	Estimated Expenditure	Actual Expenditure
Species Habitat	Maintain Suitable In- and Off-Channel Sand & Water Habitat	LP-2	\$20,000	\$14,042
Species Habitat	Whooping Crane Wet Meadow/ Grassland Habitat	LP-2	\$12,348	\$1,135
Subtotal			\$32,348	\$15,177
Operations and Maintenance	Property Maintenance and Agricultural Operations	LP-4	\$10,000	\$7,802
Total			\$42,348	\$22,979

Income

Tract	Item	Estimated Income	Actual Income
Tract 2009003	Grazing Income	\$0	\$0
Tract 2009007	Haying Income	\$0	\$0
Tract 2009007	Cropland Income	\$6,105	\$6,105
Tract 2009007	Grazing Income	\$990	\$992
Total		\$7,095	\$7,097



Base Layer: 2025 PRRIP Aerial Imagery

Legend



PLATTE RIVER
RECOVERY IMPLEMENTATION PROGRAM

- Fence Repair
- Disking
- PVWMA Phrag Control
- Roundup Herbicide
- Preemergent
- Shredding/Mowing
- Noxious Weed Control



Miles
0.5

PLUM CREEK COMPLEX FY 2025 ACTIVITIES

Date: 02/3/2026
By: TRT

Figure 9

2025 Land Budget Expenditure Overview Cottonwood Ranch Complex

General Priorities

- * **Good Neighbor Policy** - *Conduct all actions in accordance with Program's good neighbor policy.*

Adaptive Management Priorities

- * **Species Monitoring** – Monitor whooping crane use of riverine and off-channel palustrine wetland roosting habitat and least tern and piping plover use and productivity at off-channel sand and water nesting sites.

Species Habitat Priorities

- * **Maintain Target Species Sand and Water Habitat** – Application of pre-emergent herbicide on OCSW peninsula to maintain tern and plover nesting habitat. Control in-channel vegetation to maintain suitable unobstructed view widths for whooping cranes.
- * **Broad-Scale Recharge Water Supply and Whooping Crane Habitat Project** – *Operation of the broad-scale recharge project will occur in 2022 with targeted fills during the fall and spring whooping crane migrations, and during other times of excess flows in the Platte River.*
- * **Management of grassland/wet meadow habitat for whooping cranes and sandhill cranes** – *Moderate grazing will be done on Lloyd Island for the 2023 grazing season. Wet meadow areas in Section 16 T8N R19W (Tracts 2008002 and 2010001) will be grazed/hayed due to the completion of the Broad -Scale Recharge Water Supply and Whooping Crane Habitat Project construction.*
- * **Protecting Other Species of Concern** – Identify presence of and determine methods to protect other species of concern during implementation of land-related activities.

Operations and Maintenance Priorities

- * **Basic Property Maintenance Obligations and Needs** – Fulfill basic property ownership obligations and needs on Tracts 2008002, 2009006, and 2010001 including fence and road maintenance and noxious weed control.
- * **Agricultural Operations** – Oversight of grazing/ haying leases on Tracts 2009006 and 2010001.

NOTE: The budget section of this work plan only contains information for work items that are specific to these tracts. As such, tract-specific research and monitoring actions are presented but system-scale actions like target species and geomorphology/vegetation monitoring are not.

Priority Area: General

Item(s): *Complex Land Interest and Complex-Level Planning*

No.	Management Activities	Budget Line Item	Completed	Cost (Estimated)	Cost (Actual)
CR 1	Coordination of Program land actions with neighboring landowners	N/A	Yes	N/A	N/A

Priority Area: Species Habitat

Item(s): *Maintain Suitable In- and Off-Channel Sand & Water Habitat*

No.	Management Activities	Budget Line Item	Completed	Cost (Estimated)	Cost (Actual)
CR 2	Tract 2008002 Pre-emergent herbicide application on plover nesting island (2 ac) and OCSW area (17 ac).	LP-2	Yes	\$3,500	\$7,031
CR 3	In channel tree, cattail herbicide spraying	LP-2	No	\$2,000	\$0
CR 4	Tree Clearing on Lindstrom (Tract 2024002)	LP-2	Yes	\$50,000	\$69,629
CR 4.5	In-channel Disking	LP-2	Yes	\$0	\$8,066

Priority Area: Species Habitat**Item(s):** *Whooping Crane Grassland / Wet Meadow Habitat*

No.	Management Activities	Budget Line Item	Completed	Cost (Estimated)	Cost (Actual)
CR 5	Brush, tree, cattail & phrag herbicide spraying	LP-2	No	\$5,000	\$0
CR 6	Tract 2008002 Prescribed burn (252 ac)	LP-2	No	\$18,270	\$0
CR 7	Tract 2008002 Prescribed burn (98 ac)	LP-2	No	\$7,134	\$0
CR 8	Tract 2010001 Prescribed burn (30ac)	LP-2	Yes	\$2,193	\$1,530
CR 9	Tract 2010001 Prescribed burn (166 ac)	LP-2	Yes	\$12,072	\$8,466
CR 10	Tract 2010001 Prescribed burn (44 ac)	LP-2	Yes	\$3,173	\$2,244

Item(s): Other Species of Concern

No.	Management Activities	Budget Line Item	Completed	Cost (Estimated)	Cost (Actual)
CR 11	Habitat and species surveys on properties where work will occur	N/A	Yes	N/A	N/A
CR 12	Coordination with USFWS and NGPC to identify and mitigate potential impacts associated with land activities	N/A	Yes	N/A	N/A

Priority Area: Operations and Maintenance**Item(s):** *Basic Property Maintenance Obligations and Needs*

No.	Management Activities	Budget Line Item	Completed	Cost (Estimated)	Cost (Actual)
CR 13	Fence and road maintenance	LP-4	Yes	\$2,500	\$15,570
CR 14	Noxious weed control	LP-4	Yes	\$10,000	\$9,931
CR 15	Mowing	LP-4	Yes	\$7,000	\$3,150

Priority Area: Operations and Maintenance**Item(s):** *Agricultural Operations*

No.	Management Activities	Budget Line Item	Completed	Cost (Estimated)	Cost (Actual)
CR 16	Tract 2009006 grazing lease oversight	N/A	Yes	N/A	N/A
CR 17	Tract 2010001 grazing lease oversight	N/A	Yes	N/A	N/A
CR 18	Tract 2010001 haying lease oversight	N/A	Yes	N/A	N/A
CR 19	Tract 20008002 grazing & haying lease planning & oversight	N/A	Yes	N/A	N/A

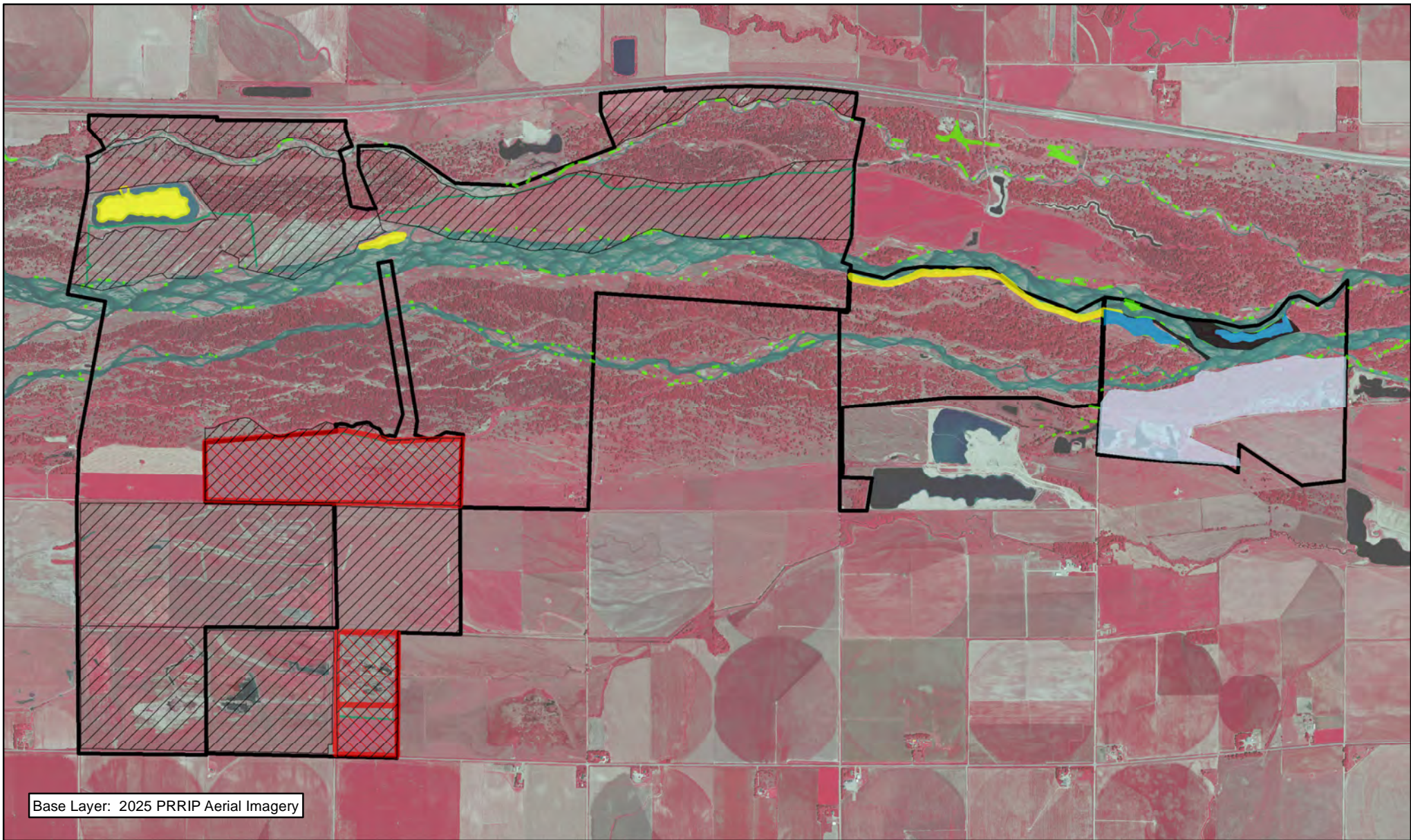
2025 Cottonwood Ranch Complex Budget Summary

Expenditures by Program Budget Line Item

Priority Area	Item	Budget Line Item	Estimated Expenditure	Actual Expenditure
Species Habitat	Target Species Sand and Water Habitat	LP-2	\$55,500	\$84,726
Species Habitat	Whooping Crane Wet Meadow/ Grassland Habitat	LP-2	\$47,842	\$12,240
		Subtotal	\$103,342	\$96,966
Operations and Maintenance	Property Maintenance and Agricultural Operations	LP-4	\$19,500	\$28,651
		Total	\$122,842	\$125,617

Income

Tract	Item	Estimated Income	Actual Income
Tract 2009006	Grazing Income	\$2,500	\$2,500
Tract 2010001	Grazing Income	\$5,775	\$3,544
Tract 2010001 SE 1/4	Grazing Income	\$2,625	\$2,625
Tract 2010001	Haying Income	\$1,500	\$420
Tract 2024002	Forage Income	\$9,855	\$9,855
		Total	\$22,255
			\$18,944





Base Layer: 2025 PRRIP Aerial Imagery




PLATTE RIVER
RECOVERY IMPLEMENTATION PROGRAM

Legend

	Road Maintenance		Shredding/Mowing
	Clear & Grub		PVWMA Phrag Control
	Debris Removal		Noxious Weed Control
	Disking		Roundup Herbicide
	Prescribed Fire		Preemergent



 Miles

1

COTTONWOOD RANCH COMPLEX FY 2025 ACTIVITIES

Date: 02/3/2026
By: TRT

Figure 10

2025 Land Budget Expenditure Overview Elm Creek Complex

General Priorities

- * **Good Neighbor Policy** - Conduct all actions in accordance with Program's good neighbor policy.

Adaptive Management Priorities

- * **Species Monitoring** – Monitor whooping crane use of in-channel roosting habitat and least tern and piping plover use and productivity at off-channel sand and water nesting sites.

Species Habitat Priorities

- * **Maintain Target Species Sand and Water Habitat** – Control in-channel vegetation to maintain suitable unobstructed view widths for whooping cranes.
- * **Protecting Other Species of Concern** – Identify presence of and determine methods to protect other species of concern during implementation of land-related activities.

Operations and Maintenance Priorities

- * **Basic Property Maintenance Obligations and Needs** – Fulfill basic property ownership obligations and needs on Tracts 2009002, 2009005, 2012001 and 2012002 including fence and road maintenance and noxious weed control.
- * **Agricultural Operations** – Oversight of grazing/ haying leases on Tracts 2009005, 2012001 and 2012002.

NOTE: The budget section of this work plan only contains information for work items that are specific to these tracts. As such, tract-specific research and monitoring actions are presented but system-scale actions like target species and geomorphology/vegetation monitoring are not.

Priority Area: General*Item(s): Complex Land Interest and Complex-Level Planning*

No.	Management Activities	Budget Line Item	Completed	Cost (Estimated)	Cost (Actual)
EC 1	Coordination of Program land actions with neighboring landowners	Annual	Yes	N/A	N/A

Priority Area: Species Habitat*Item(s): Maintain Suitable In- and Off-Channel Sand & Water Habitat*

No.	Management Activities	Budget Line Item	Completed	Cost (Estimated)	Cost (Actual)
EC 2	No items	N/A	N/A	\$0	N/A

Priority Area: Species Habitat*Item(s): Whooping Crane Grassland / Wet Meadow Habitat*

No.	Management Activities	Budget Line Item	Completed	Cost (Estimated)	Cost (Actual)
EC 3	Brush, tree, cattail herbicide spraying	LP-2	No	\$2,000	\$0
EC 4	Tract 2009002 Prescribed burn (35 ac)	LP-2	No	\$2,535	\$0
EC 5	Tract 2012002 Prescribed burn (387 ac)	LP-2	Yes	\$28,114	\$19,737
EC 6	Tract 2015003 Prescribed burn (27 ac)	LP-2	No	\$1,985	\$0

Priority Area: Species Habitat
Item(s): Other Species of Concern

No.	Management Activities	Budget Line Item	Completed	Cost (Estimated)	Cost (Actual)
EC 7	Habitat and species surveys on properties where work will occur	N/A	Yes	N/A	N/A
EC 8	Coordination with USFWS and NGPC to identify and mitigate potential impacts associated with land activities	N/A	Yes	N/A	N/A

Priority Area: Operations and Maintenance
Item(s): Basic Property Maintenance Obligations and Needs

No.	Management Activities	Budget Line Item	Completed	Cost (Estimated)	Cost (Actual)
EC 9	Fence and road maintenance	LP-4	Yes	\$1,000	\$6,283
EC 10	Mowing	LP-4	Yes	\$4,000	\$2,100
EC 11	Noxious weed control	LP-4	Yes	\$15,000	\$15,938

Priority Area: Operations and Maintenance
Item(s): Agricultural Operations

No.	Management Activities	Budget Line Item	Completed	Cost (Estimated)	Cost (Actual)
EC 12	Tract 2009002 crop lease oversight	N/A	Yes	N/A	N/A
EC 13	Tract 2009005 grazing lease oversight	N/A	Yes	N/A	N/A
EC 14	Tract 2012001 haying lease oversight	N/A	Yes	N/A	N/A
EC 15	Tract 2012002 grazing lease oversight	N/A	Yes	N/A	N/A

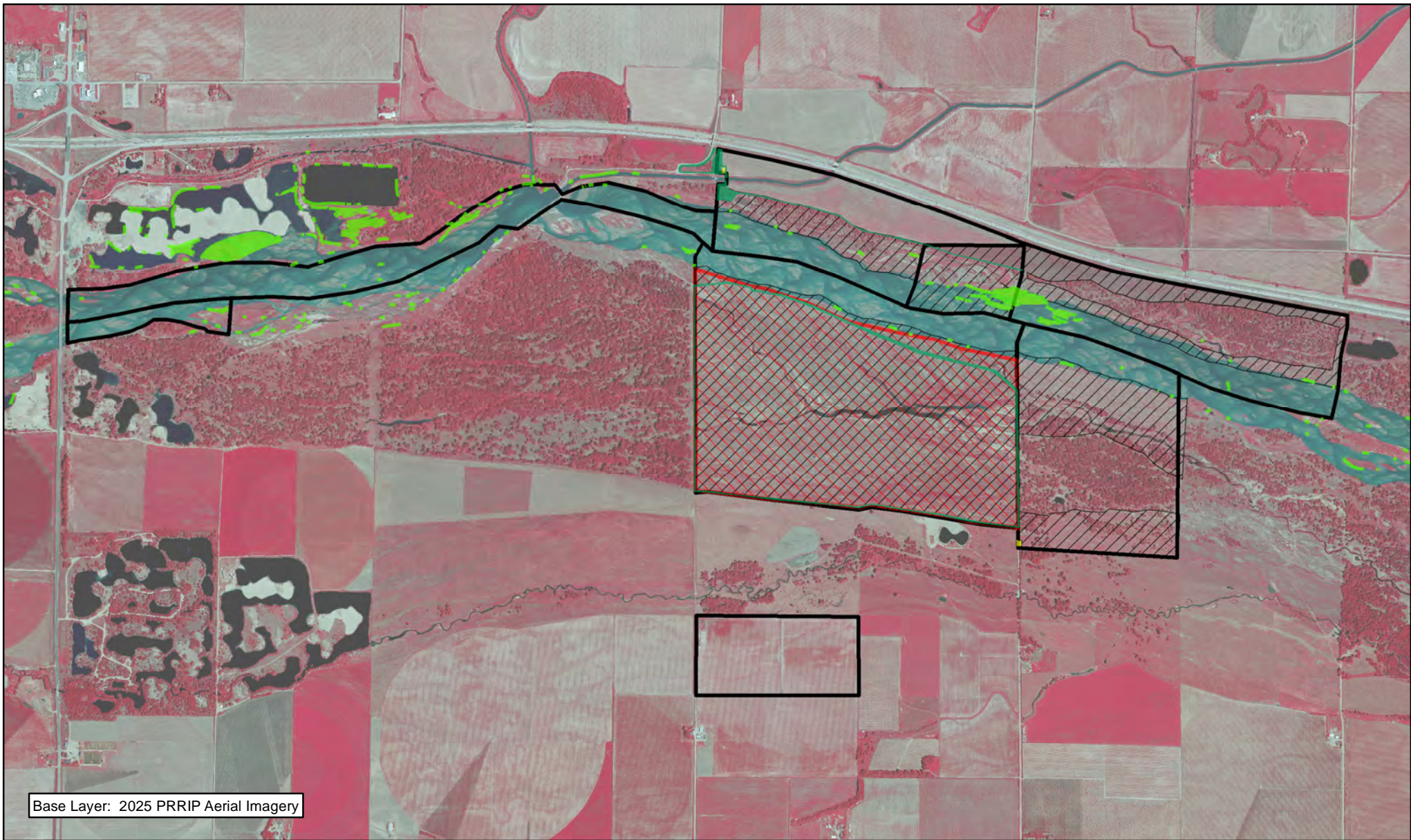
2025 Elm Creek Complex Budget Summary

Expenditures by Program Budget Line Item

Priority Area	Item	Budget Line Item	Estimated Expenditure	Actual Expenditure
Species Habitat	Target Species Sand and Water Habitat	LP-2	\$0	\$0
Species Habitat	Whooping Crane Wet Meadow/ Grassland Habitat	LP-2	\$34,634	\$19,737
Subtotal			\$34,634	\$19,737
Operations and Maintenance	Property Maintenance and Agricultural Operations	LP-4	\$20,000	\$24,321
Total			\$54,634	\$44,058

Income

Tract	Item	Estimated Income	Actual Income
Tract 2009002	Crop Income	\$4,640	\$4,640
Tract 2009005	Grazing Income	\$4,900	\$4,900
Tract 2012001/2015003	Haying Income	\$1,750	\$874
Tract 2012002	Grazing Income	\$5,468	\$5,468
Total		\$16,758	\$15,882


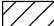





Base Layer: 2025 PRRIP Aerial Imagery




PLATTE RIVER
RECOVERY IMPLEMENTATION PROGRAM

Legend

-  Preemergent
-  Noxious Weed Control
-  PVWMA Phrag Control
-  Prescribed Fire
-  Shredding/Mowing



 Miles

1

ELM CREEK COMPLEX FY 2025 ACTIVITIES

Date: 02/3/2026
By: TRT

Figure 11

2025 Land Budget Expenditure Overview Jerry F. Kenny Pawnee Complex

General Priorities

- * **Good Neighbor Policy** - Conduct all actions in accordance with Program's good neighbor policy.

Adaptive Management Priorities

- * **Species Monitoring** – Monitor whooping crane use of in-channel roosting habitat.

Species Habitat Priorities

- * **Maintain Target Species Sand and Water Habitat** – Control in-channel vegetation to maintain suitable unobstructed view widths for whooping cranes. Remove vegetation from overbank areas adjacent to the channel to promote channel widening through lateral erosion.
- * **Protecting Other Species of Concern** – Identify presence of and determine methods to protect other species of concern during implementation of land-related activities.

Operations and Maintenance Priorities

- * **Basic Property Maintenance Obligations and Needs** – Fulfill basic property ownership obligations and needs on Tracts 2014002 and 2015002.
- * **Agricultural Operations** – Oversight of grazing/ haying leases on Tracts 2014002 and 2015002.

NOTE: The budget section of this work plan only contains information for work items that are specific to these tracts. As such, tract-specific research and monitoring actions are presented but system-scale actions like target species and geomorphology/vegetation monitoring are not.

Priority Area: General**Item(s):** *Complex Land Interest and Good Neighbor Policy*

No.	Management Activities	Budget Line Item	Completed	Cost (Estimated)	Cost (Actual)
PAW 1	Coordination of Program land actions with neighboring landowners	Annual	Yes	N/A	N/A

Priority Area: Adaptive Management & Target Species Habitat**Item(s):** *Tern, Plover and Whooping Crane Riverine Habitat Experiments*

No.	Management Activities	Budget Line Item	Completed	Cost (Estimated)	Cost (Actual)
PAW 2	Herbicide treatment on south bank to kill vegetation prior to disking (28 ac)	LP-2	Yes	\$6,000	\$3,971
PAW 3	In-channel island cross disking to facilitate erosion (20 ac)	LP-2	Yes	\$12,000	\$4,431
PAW 4	Brush, tree, cattail herbicide spraying	LP-2	Yes	\$2,000	\$1,252

Priority Area: Species Habitat**Item(s):** *Other Species of Concern*

No.	Management Activities	Budget Line Item	Completed	Cost (Estimated)	Cost (Actual)
PAW 5	Habitat and species surveys on properties where work will occur	N/A	Yes	N/A	N/A
PAW 6	Coordination with USFWS and NGPC to identify and mitigate potential impacts associated with land activities	N/A	Yes	N/A	N/A

Priority Area: Operations and Maintenance**Item(s):** *Basic Property Maintenance Obligations and Needs*

No.	Management Activities	Budget Line Item	Completed	Cost (Estimated)	Cost (Actual)
PAW 7	Noxious weed control	LP-4	Yes	\$5,000	3740
PAW 8	Fence and road maintenance	LP-4	Yes	\$15,000	10554
PAW 9	Mowing	LP-4	No	\$1,000	0

Priority Area: Operations and Maintenance**Item(s):** *Agricultural Operations*

No.	Management Activities	Budget Line Item	Completed	Cost (Estimated)	Cost (Actual)
PAW10	Tract 2014002 grazing lease oversight	N/A	Yes	N/A	N/A
PAW11	Tract 2015002 grazing lease oversight	N/A	Yes	N/A	N/A
PAW12	Tract 2015002 haying lease oversight	N/A	Yes	N/A	N/A

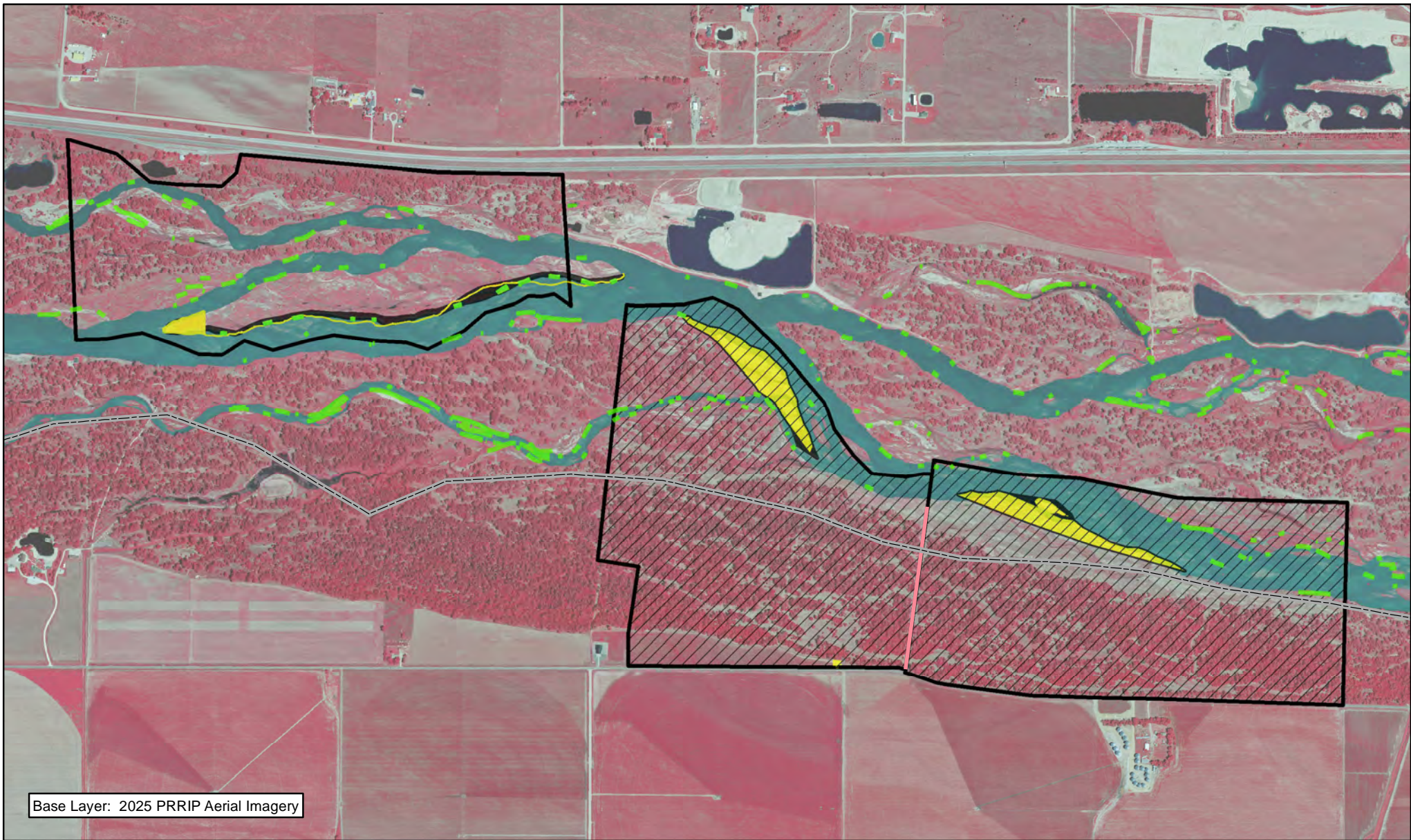
2025 Jerry F. Kenny Pawnee Complex Budget Summary

Expenditures by Program Budget Line Item






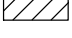
Priority Area	Item	Budget Line Item	Estimated Expenditure	Actual Expenditure
Adaptive Management & Species Habitat	Target Species Sand and Water Habitat	LP-2	\$20,000	\$9,654
		Subtotal	\$20,000	\$9,654
Operations and Maintenance	Property Maintenance and Agricultural Operations	LP-4	\$21,000	\$14,294
		Total	\$41,000	\$23,948

Income


Tract	Item	Estimated Income	Actual Income
Tract 2015002	Haying Income	\$636	\$636
Tract 2014002 & 2015002	Grazing Income	\$3,188	\$3,188
	Total	\$3,824	\$3,824



Legend

-  County
-  Barbwire Fence Construction
-  Disking
-  Preemergent
-  PVWMA Phrag Control
-  Noxious Weed Control



 Miles
0.5

JERRY F. KENNY
PAWNEE COMPLEX
FY 2025 ACTIVITIES

Date: 02/3/2026
By: TRT

Figure 12

2025 Land Budget Expenditure Overview Ft Kearny Complex

General Priorities

- * **Good Neighbor Policy** - *Conduct all actions in accordance with Program's good neighbor policy.*

Adaptive Management Priorities

- * **Species Monitoring** – Monitor whooping crane use of off-channel palustrine wetlands and in-channel roosting habitat.

Species Habitat Priorities

- * **Maintain Target Species Sand and Water Habitat** – *Control in-channel vegetation to maintain suitable unobstructed view widths for whooping cranes. Remove vegetation from overbank areas adjacent to the channel to promote channel widening through lateral erosion.*
- * **Protecting Other Species of Concern** – Identify presence of and determine methods to protect other species of concern during implementation of land-related activities.

* The budget items have been reviewed ar

- * **Basic Property Maintenance Obligations and Needs** – Fulfill basic property ownership obligations and needs on Tracts 2008001, 2009001, 2009004, 2010003, 2012003 and 2015001 including fence and road maintenance and noxious weed control.
- * **Agricultural Operations** – Oversight of grazing/haying leases on Tracts 2008001, 2012003, 2009001, 2009004, and 2015001.

NOTE: The budget section of this work plan only contains information for work items that are specific to these tracts. As such, tract-specific research and monitoring actions are presented but system-scale actions like target species and geomorphology/vegetation monitoring are not.

Priority Area: General**Item(s):** *Complex Land Interest and Good Neighbor Policy*

No.	Management Activities	Budget Line Item	Completed	Cost (Estimated)	Cost (Actual)
FK 1	Coordination of Program land actions with neighboring landowners	N/A	Yes	N/A	N/A

Priority Area: Species Habitat**Item(s):** *Improve Target Species Sand and Water Habitat*

No.	Management Activities	Budget Line Item	Completed	Cost (Estimated)	Cost (Actual)
FK 2	Herbicide treatment on perimeter of cleared islands to kill vegetation prior to disking	LP-2	Yes	\$3,000	\$1,403
FK 3	In-channel island cross disking to facilitate erosion	LP-2	Yes	\$15,000	\$7,063

Priority Area: Species Habitat**Item(s):** *Whooping Crane Grassland / Wet Meadow Habitat*

No.	Management Activities	Budget Line Item	Completed	Cost (Estimated)	Cost (Actual)
FK 4	Tract 2008001 - Shred/ mulch cedar trees	LP-2	Yes	\$15,000	\$11,100
FK 5	Brush, tree, cattail herbicide spraying	LP-2	Yes	\$2,500	\$1,221
FK 6	Tract 2008001- Prescribed burn (78 ac)	LP-2	No	\$5,732	\$0
FK 7	Tract 2012003- Prescribed burn (67 ac)	LP-2	No	\$4,911	\$0
FK 8	Tract 2009004- Prescribed burn (77 ac)	LP-2	No	\$5,600	\$0
FK 9	Tract 2015001- Prescribed burn (180 ac)	LP-2	No	\$13,098	\$0

Priority Area: Species Habitat**Item(s):** *Other Species of Concern*

No.	Management Activities	Budget Line Item	Completed	Cost (Estimated)	Cost (Actual)
FK 10	Habitat and species surveys on properties where work will occur	N/A	Yes	N/A	N/A
FK 11	Coordination with USFWS and NGPC to identify and mitigate potential impacts associated with land activities	N/A	Yes	N/A	N/A

Priority Area: Operations and Maintenance**Item(s):** *Basic Property Maintenance Obligations and Needs*

No.	Management Activities	Budget Line Item	Completed	Cost (Estimated)	Cost (Actual)
FK 12	Noxious weed control	LP-4	Yes	\$10,000	\$8,738
FK 13	Fence and road maintenance	LP-4	Yes	\$2,500	\$2,154
FK 14	Mowing	LP-4	Yes	\$2,500	\$1,400

Item(s): *Agricultural Operations*

No.	Management Activities	Budget Line Item	Completed	Cost (Estimated)	Cost (Actual)
FK 15	Tract 2008001 grazing lease oversight	N/A	Yes	N/A	N/A
FK 16	Tract 2012003 grazing lease oversight	N/A	Yes	N/A	N/A
FK 17	Tract 2015001 grazing lease oversight	N/A	Yes	N/A	N/A

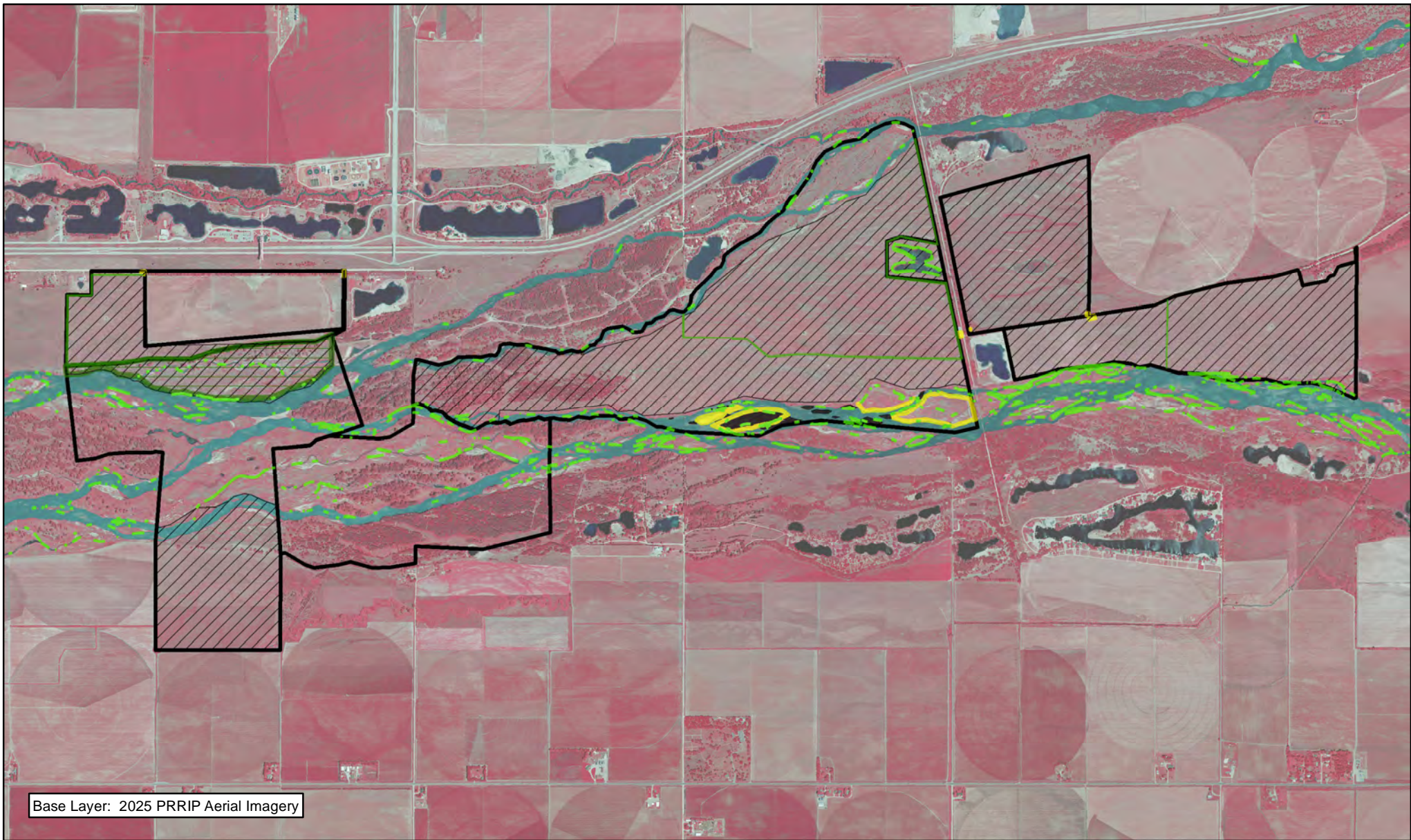
2025 Ft Kearny Complex Budget Summary

Expenditures by Program Budget Line Item

Priority Area	Item	Budget Line Item	Estimated Expenditure	ActualExpenditure
Species Habitat	Improve Sand and Water Habitat	LP-2	\$18,000	\$8,466
Species Habitat	Whooping Crane Wet Meadow/ Grassland Habitat	LP-2	\$46,841	\$12,321
		Subtotal	\$64,841	\$20,787
Operations and Maintenance	Property Maintenance and Agricultural Operations	LP-4	\$15,000	\$12,292
		Total	\$79,841	\$33,079

Income

Tract	Item	Estimated Income	Actual Income
Tract 2008001 N & 2012003	Grazing Income	\$1,800	\$900
Tract 2008001 S	Grazing Income	\$8,250	\$4,007
Tract 2009001	Grazing Income	\$0	\$0
Tract 2009004	Grazing Income	\$8,750	\$8,750
Tract 2012003	Cropland Income	\$1,900	\$3,450
Tract 2015001	Grazing Income	\$10,000	\$10,000
Total		\$30,700	\$27,107



Legend

- Preemergent
- Aboveground Tree Clearing
- Shredding/Mowing
- Disking
- PVWMA Phrag Control
- Noxious Weed Control
- Fence Repair



Miles
1

FT. KEARNY COMPLEX FY 2025 ACTIVITIES

Date: 02/3/2026
By: TRT

Figure 13

2025 Land Budget Expenditure Overview Minden- Gibbon Agreements

Adaptive Management Priorities

- * **Species Monitoring** – Monitor whooping crane use of in-channel roosting habitat.

Species Habitat Priorities

- * **Maintain Target Species Sand and Water Habitat** – Control in-channel vegetation to maintain suitable unobstructed view widths for whooping cranes.

Priority Area: Species Habitat

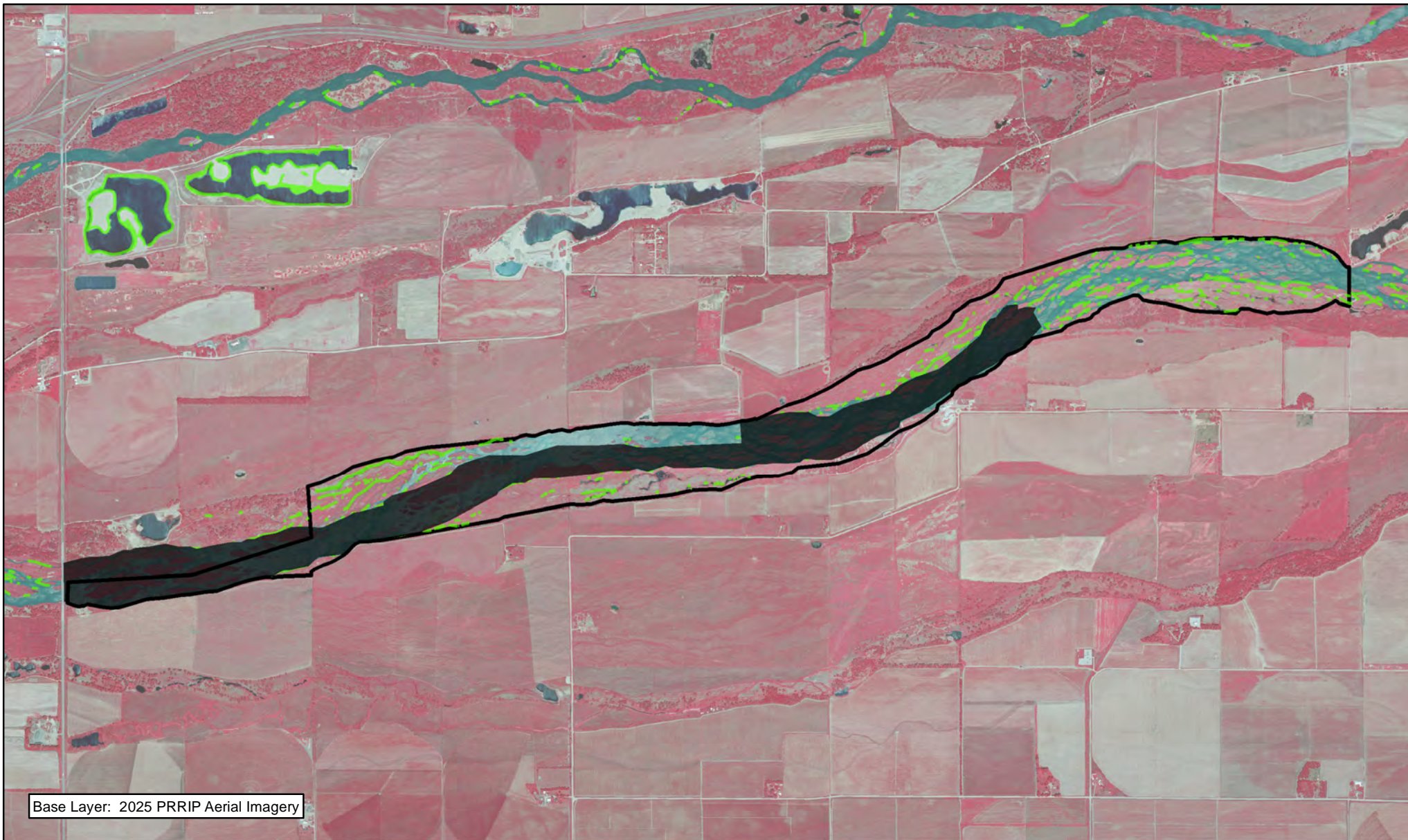
Item(s): *Improve Target Species Sand and Water Habitat*

No.	Management Activities	Budget Line Item	Completed	Cost (Estimated)	Cost (Actual)
M-G 1	In-channel Disking	LP-2	Yes	\$30,000	\$59,937

2025 Minden-Gibbon Management Agreement Budget Summary



Expenditures by Program Budget Line Item

Priority Area	Item	Budget Line Item	Estimated Expenditure	Actual Expenditure
Species Habitat	Improve Target Species Sand and Water Habitat	LP-2	\$30,000	\$56,937
		Total	\$30,000	\$56,937

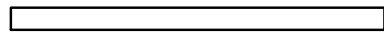


PLATTE RIVER
RECOVERY IMPLEMENTATION PROGRAM

Legend

-  PVWMA Phrag Control
-  Disking



 Miles

1

**MINDEN-GIBBON
COMPLEX
FY 2025 ACTIVITIES**

Date: 02/3/2026
By: TRT

Figure 14

2025 Land Budget Expenditure Overview Clark Island Complex

General Priorities

- * **Good Neighbor Policy** - Conduct all actions in accordance with Program's good neighbor policy.

Adaptive Management Priorities

- * **Species Monitoring** – Monitor whooping crane use of palustrine wetlands and in-channel roosting habitat.

Species Habitat Priorities

- * **Maintain Target Species Sand and Water Habitat** – Control in-channel vegetation to maintain suitable unobstructed view widths for whooping cranes.
- * **Protecting Other Species of Concern** – Identify presence of and determine methods to protect other species of concern during implementation of land-related activities.

* The budget items have been reviewed and

- * **Basic Property Maintenance Obligations and Needs** – Fulfill basic property ownership obligations and needs including fence and road maintenance and noxious weed control.
- * **Agricultural Operations** – Oversight of cropland, grazing/ haying leases

NOTE: The budget section of this work plan only contains information for work items that are specific to these tracts. As such, tract-specific research and monitoring actions are presented but system-scale actions like target species and geomorphology/vegetation monitoring are not.

Priority Area: General**Item(s):** *Complex Land Interest and Complex-Level Planning*

No.	Management Activities	Budget Line Item	Completed	Cost (Estimated)	Cost (Actual)
CI 1	Coordination of Program land actions with neighboring landowners	Annual	Yes	N/A	N/A

Priority Area: Species Habitat**Item(s):** *Improve Target Species Sand and Water Habitat*

No.	Management Activities	Budget Line Item	Completed	Cost (Estimated)	Cost (Actual)
CI 2	Herbicide treatment on south bank to kill vegetation prior to disking	LP-2	Yes	\$5,000	\$1,655
CI 3	In-channel island cross disking to facilitate erosion	LP-2	Yes	\$15,000	\$4,178

Priority Area: Species Habitat**Item(s):** *Whooping Crane Grassland / Wet Meadow Habitat*

No.	Management Activities	Budget Line Item	Completed	Cost (Estimated)	Cost (Actual)
CR 4	Brush, tree, cattail& phrag herbicide spraying	LP-2	Yes	\$10,000	\$2,658
CI 5	Tract 2018001 Prescribed burn (361 ac)	LP-2	No	\$26,225	\$0

Priority Area: Species Habitat**Item(s):** *Other Species of Concern*

No.	Management Activities	Budget Line Item	Completed	Cost (Estimated)	Cost (Actual)
CI 6	Habitat and species surveys on properties where work will occur	N/A	Yes	N/A	N/A
CI 7	Coordination with USFWS and NGPC to identify and mitigate potential impacts associated with land activities	N/A	Yes	N/A	N/A

Priority Area: Operations and Maintenance**Item(s):** *Basic Property Maintenance Obligations and Needs*

No.	Management Activities	Budget Line Item	Completed	Cost (Estimated)	Cost (Actual)
CI 8	Fence and road maintenance	LP-4	Yes	\$15,000	\$8,680
CI 9	Noxious weed control	LP-4	Yes	\$5,000	\$4,467
CI 10	Mowing	LP-4	Yes	\$5,000	\$1,750

Priority Area: Operations and Maintenance**Item(s):** *Agricultural Operations*

No.	Management Activities	Budget Line Item	Completed	Cost (Estimated)	Cost (Actual)
CI 11	Grazing & Haying lease oversight	N/A	Yes	N/A	N/A

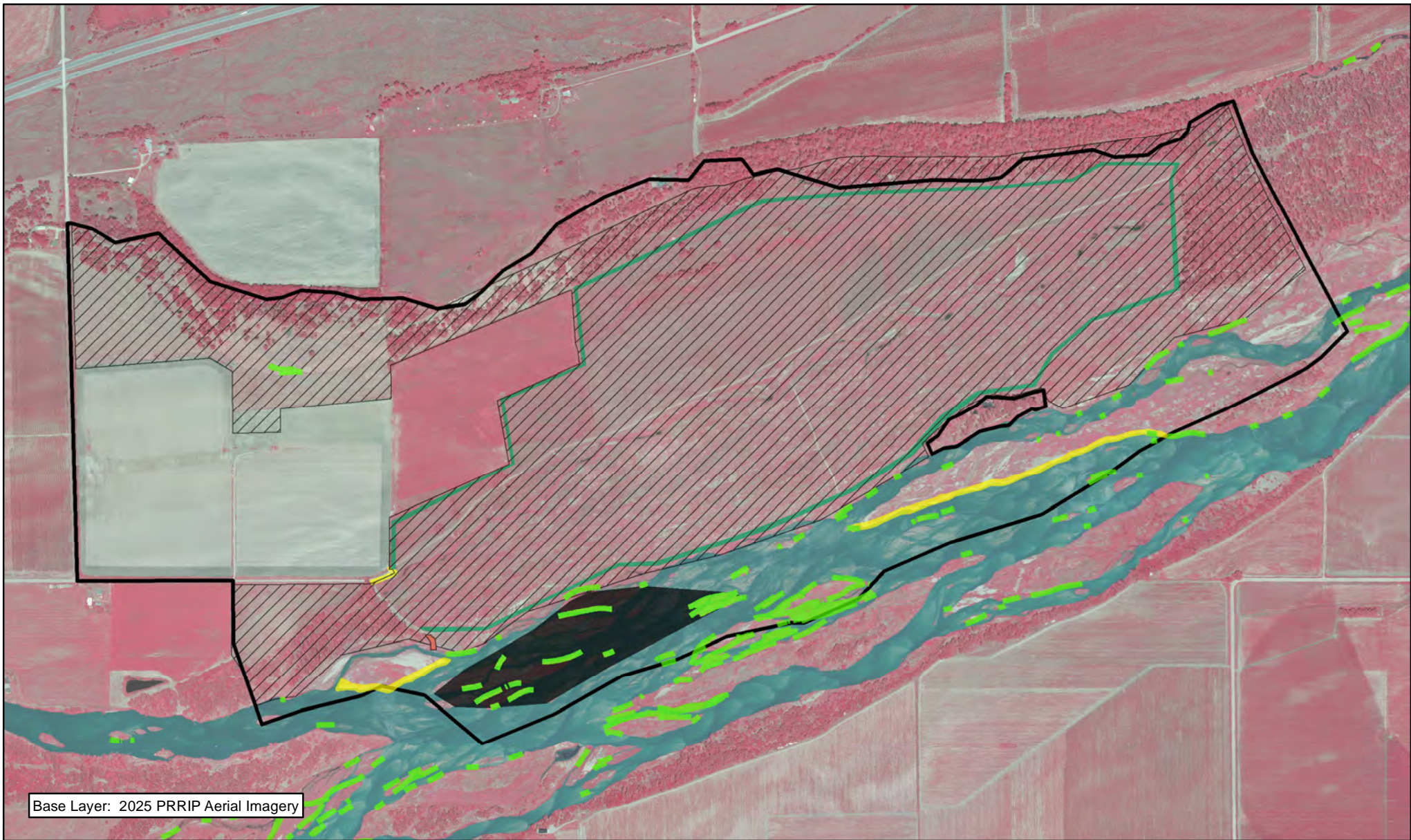
2025 Clark Island Complex Budget Summary

Expenditures by Program Budget Line Item

Priority Area	Item	Budget Line Item	Estimated Expenditure	Actual Expenditure
Species Habitat	Improve Target Species Sand and Water Habitat	LP-2	\$20,000	\$5,833
Species Habitat	Whooping Crane Wet Meadow/ Grassland Habitat	LP-2	\$36,225	\$2,658
Subtotal			\$56,225	\$8,491
Operations and Maintenance	Property Maintenance and Agricultural Operations	LP-4	\$25,000	\$14,897
Total			\$81,225	\$23,388

Income

Tract	Item	Estimated Income	Actual Income
Tract 2018001	Accretion & Meadow Grazing Income	\$10,500	\$9,505
Tract 2018001	Irrigated Cropland Cash Rent Income	\$21,750	\$21,750
Tract 2018001	Dryland Cropland Cash Rent Income	\$4,255	\$4,255
Total		\$36,505	\$35,510



Base Layer: 2025 PRRIP Aerial Imagery



PLATTE RIVER
RECOVERY IMPLEMENTATION PROGRAM

Legend

- Airboat Ramp Maintenance
- Preemergent
- Shredding/Mowing
- Disking
- Noxious Weed Control
- PVWMA Phrag Control



0.5 Miles

CLARK ISLAND COMPLEX FY 2025 ACTIVITIES

Date: 02/3/2026
By: TRT

Figure 15

2025 Land Budget Expenditure Overview Shoemaker Island Complex

General Priorities

- * **Good Neighbor Policy** - Conduct all actions in accordance with Program's good neighbor policy.

Adaptive Management Priorities

- * **Species Monitoring** – Monitor whooping crane use of palustrine wetlands and in-channel roosting habitat.

Species Habitat Priorities

- * **Maintain Target Species Sand and Water Habitat** – Control in-channel vegetation to maintain suitable unobstructed view widths for whooping cranes.
- * **Protecting Other Species of Concern** – Identify presence of and determine methods to protect other species of concern during implementation of land-related activities.

* The budget items have been reviewed and

- * **Basic Property Maintenance Obligations and Needs** – Fulfill basic property ownership obligations and needs on Tract 2010004 including fence and road maintenance and noxious weed control.
- * **Agricultural Operations** – Oversight of grazing/ haying leases on Tract 2010004

NOTE: The budget section of this work plan only contains information for work items that are specific to these tracts. As such, tract-specific research and monitoring actions are presented but system-scale actions like target species and geomorphology/vegetation monitoring are not.

Priority Area: General**Item(s):** *Complex Land Interest and Complex-Level Planning*

No.	Management Activities	Budget Line Item	Completed	Cost (Estimated)	Cost (Actual)
SI 1	Coordination of Program land actions with neighboring landowners	Annual	Yes	N/A	N/A

Priority Area: Species Habitat**Item(s):** *Maintain Suitable In- and Off-Channel Sand & Water Habitat*

No.	Management Activities	Budget Line Item	Completed	Cost (Estimated)	Cost (Actual)
SI 2	No Items	N/A	N/A	\$0	N/A

Priority Area: Species Habitat**Item(s):** *Whooping Crane Grassland / Wet Meadow Habitat*

No.	Management Activities	Budget Line Item	Completed	Cost (Estimated)	Cost (Actual)
SI 3	Brush, tree, cattail& phrag herbicide spraying	LP-2	Yes	\$5,000	\$4,127
SI 4	Tract 2010004-South Meadow Prescribed burn (57 ac)	LP-2	No	\$4,125	\$0
SI 5	Tract 2010004-West Pasture Prescribed burn (361 ac)	LP-2	No	\$26,222	\$0
SI 6	Tract 2010004-East pasture Prescribed burn (178 ac)	LP-2	No	\$12,984	\$0

Priority Area: Species Habitat**Item(s):** *Other Species of Concern*

No.	Management Activities	Budget Line Item	Completed	Cost (Estimated)	Cost (Actual)
SI 7	Habitat and species surveys on properties where work will occur	N/A	Yes	N/A	N/A
SI 8	Coordination with USFWS and NGPC to identify and mitigate potential impacts associated with land activities	N/A	Yes	N/A	N/A

Priority Area: Operations and Maintenance**Item(s):** *Basic Property Maintenance Obligations and Needs*

No.	Management Activities	Budget Line Item	Completed	Cost (Estimated)	Cost (Actual)
SI 9	Fence and road maintenance	LP-4	Yes	\$1,000	\$1,604
SI 10	Noxious weed control	LP-4	Yes	\$2,500	\$982
SI 11	Mowing	LP-4	Yes	\$3,000	\$875

Priority Area: Operations and Maintenance**Item(s):** *Agricultural Operations*

No.	Management Activities	Budget Line Item	Completed	Cost (Estimated)	Cost (Actual)
SI 12	Grazing & Haying lease oversight	N/A	Yes	N/A	N/A

2025 Shoemaker Island Complex Budget Summary

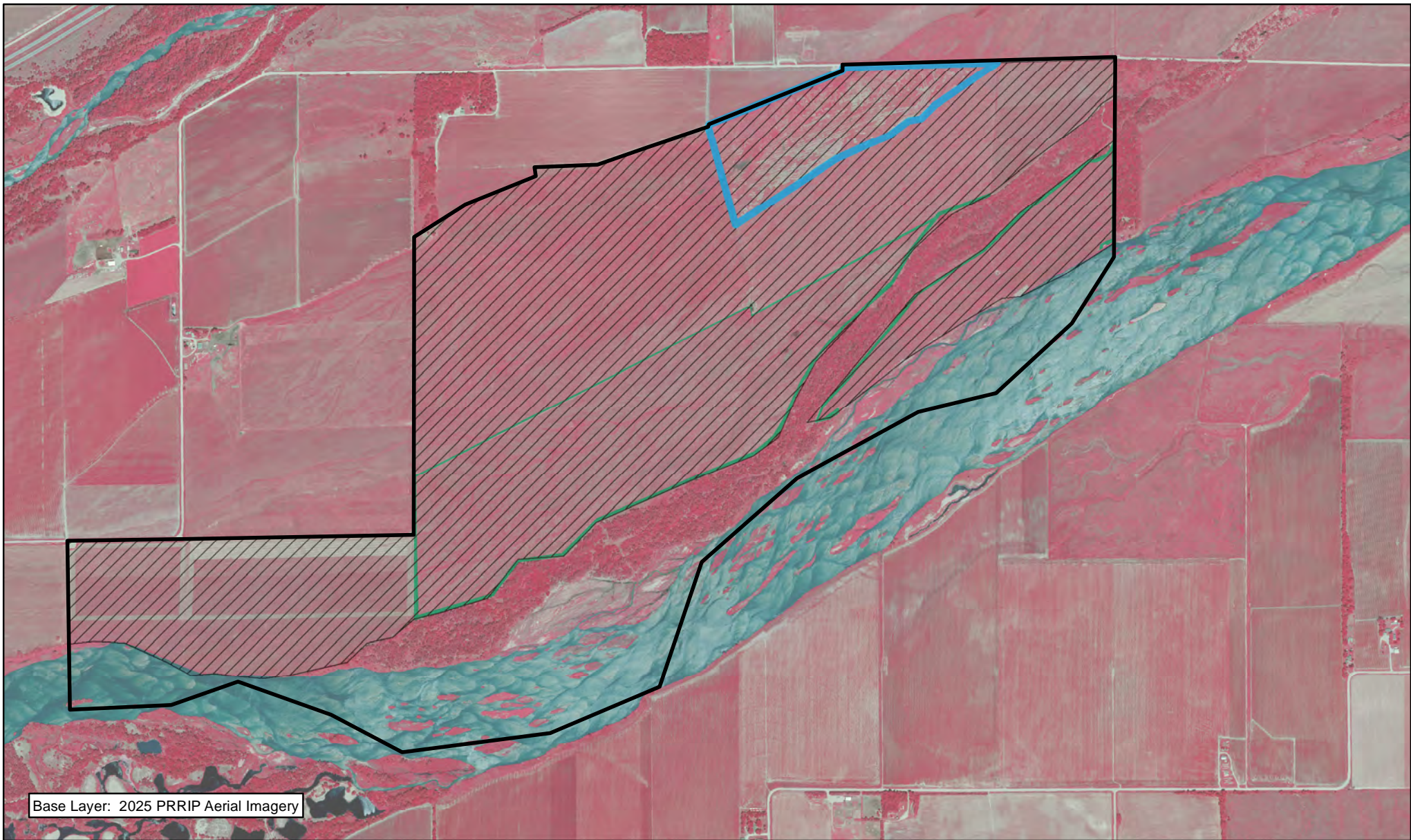
Expenditures by Program Budget Line Item

Priority Area	Item	Budget Line Item	Estimated Expenditure	Actual Expenditure
Species Habitat	Improve Target Species Sand and Water Habitat	LP-2	\$0	\$0
Species Habitat	Whooping Crane Wet Meadow/ Grassland Habitat	LP-2	\$48,331	\$4,127
		Subtotal	\$48,331	\$4,127

Operations and Maintenance	Property Maintenance and Agricultural Operations	LP-4	\$6,500	\$3,461
		Total	\$54,831	\$7,588

Income

Tract	Item	Estimated Income	Actual Income
Tract 2010004	Grazing & Haying Income	\$25,500	\$13,533
		Total	\$13,533




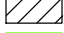



Base Layer: 2025 PRRIP Aerial Imagery

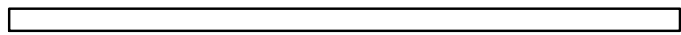


PLATTE RIVER
RECOVERY IMPLEMENTATION PROGRAM

Legend

-  Cattail/Phragmites Spraying
-  Shredding/Mowing
-  Disking
-  Noxious Weed Control
-  PVWMA Phrag Control



 Miles

1

SHOEMAKER ISLAND COMPLEX FY 2025 ACTIVITIES

Date: 02/3/2026

By: TRT

Figure 16

2025 Land Budget Expenditure Overview Chapman Complex

General Priorities

- * **Good Neighbor Policy** - Conduct all actions in accordance with Program's good neighbor policy.

Adaptive Management Priorities

- * **Whooping Crane Riverine Habitat** – Design and implement vegetation clearing to provide a range of unobstructed view widths above the Programs minimums
- * **Species Monitoring** – Monitor whooping crane use of palustrine wetlands and in-channel roosting habitat.

Species Habitat Priorities

- * **Improve Target Species Sand and Water Habitat** – Control in-channel vegetation to maintain suitable unobstructed view widths for whooping cranes.
- * **Protecting Other Species of Concern** – Identify presence of and determine methods to protect other species of concern during implementation of land-related activities.

Operations and Maintenance Priorities

- * **Basic Property Maintenance Obligations and Needs** – Fulfill basic property ownership obligations and needs on Tracts including fence and road maintenance and noxious weed control. Remove unnecessary buildings on Tract 2021001.
- * **Agricultural Operations** – Oversight of grazing/ haying and cropland leases

NOTE: The budget section of this work plan only contains information for work items that are specific to these tracts. As such, tract-specific research and monitoring actions are presented but system-scale actions like target species and geomorphology/vegetation monitoring are not.

Priority Area: General**Item(s):** *Complex Land Interest and Complex-Level Planning*

No.	Management Activities	Budget Line Item	Completed	Cost (Estimated)	Cost (Actual)
CC 1	Coordination of Program land actions with neighboring landowners	Annual	Yes	N/A	N/A

Priority Area: Species Habitat**Item(s):** *Improve Target Species Sand and Water Habitat*

No.	Management Activities	Budget Line Item	Completed	Cost (Estimated)	Cost (Actual)
CC 2	Herbicide treatment on south bank to kill vegetation prior to disking	LP-2	Yes	\$3,000	\$5,186
CC 3	In-channel island cross disking to facilitate erosion	LP-2	Yes	\$15,000	\$3,665

Priority Area: Species Habitat**Item(s):** *Whooping Crane Grassland / Wet Meadow Habitat*

No.	Management Activities	Budget Line Item	Completed	Cost (Estimated)	Cost (Actual)
CC 4	Brush, tree, cattail& phrag herbicide spraying	LP-2	No	\$1,500	\$0
CC 5	Tract 2019001-N Accretion Prescribed burn (47 ac)	LP-2	Yes	\$3,447	\$2,397
CC 6	Tract 2019001-S Meadow Prescribed burn (70 ac)	LP-2	Yes	\$5,063	\$3,570
CC 7	Tract 2021001-S Meadow Prescribed burn (86 ac)	LP-2	Yes	\$6,269	\$4,386

Priority Area: Species Habitat**Item(s):** *Other Species of Concern*

No.	Management Activities	Budget Line Item	Completed	Cost (Estimated)	Cost (Actual)
CC 8	Habitat and species surveys on properties where work will occur	N/A	Yes	N/A	N/A
CC 9	Coordination with USFWS and NGPC to identify and mitigate potential impacts associated with land activities	N/A	Yes	N/A	N/A

Priority Area: Operations and Maintenance**Item(s):** *Basic Property Maintenance Obligations and Needs*

No.	Management Activities	Budget Line Item	Completed	Cost (Estimated)	Cost (Actual)
CC 10	Tract 2021001 Homesite Demo	LP-4	No	\$200,000	\$0
CC 11	Fence and road maintenance	LP-4	Yes	\$25,000	\$28,405
CC 12	Noxious weed control	LP-4	Yes	\$2,500	\$795
CC 13	Mowing	LP-4	Yes	\$3,000	\$2,800

Priority Area: Operations and Maintenance**Item(s):** *Agricultural Operations*

No.	Management Activities	Budget Line Item	Completed	Cost (Estimated)	Cost (Actual)
CC 14	Tract 2019001 grazing lease oversight	N/A	Yes	N/A	N/A
CC 15	Tract 2021001 grazing lease oversight	N/A	Yes	N/A	N/A
CC 16	Tract 2021001 crop lease oversight	N/A	Yes	N/A	N/A

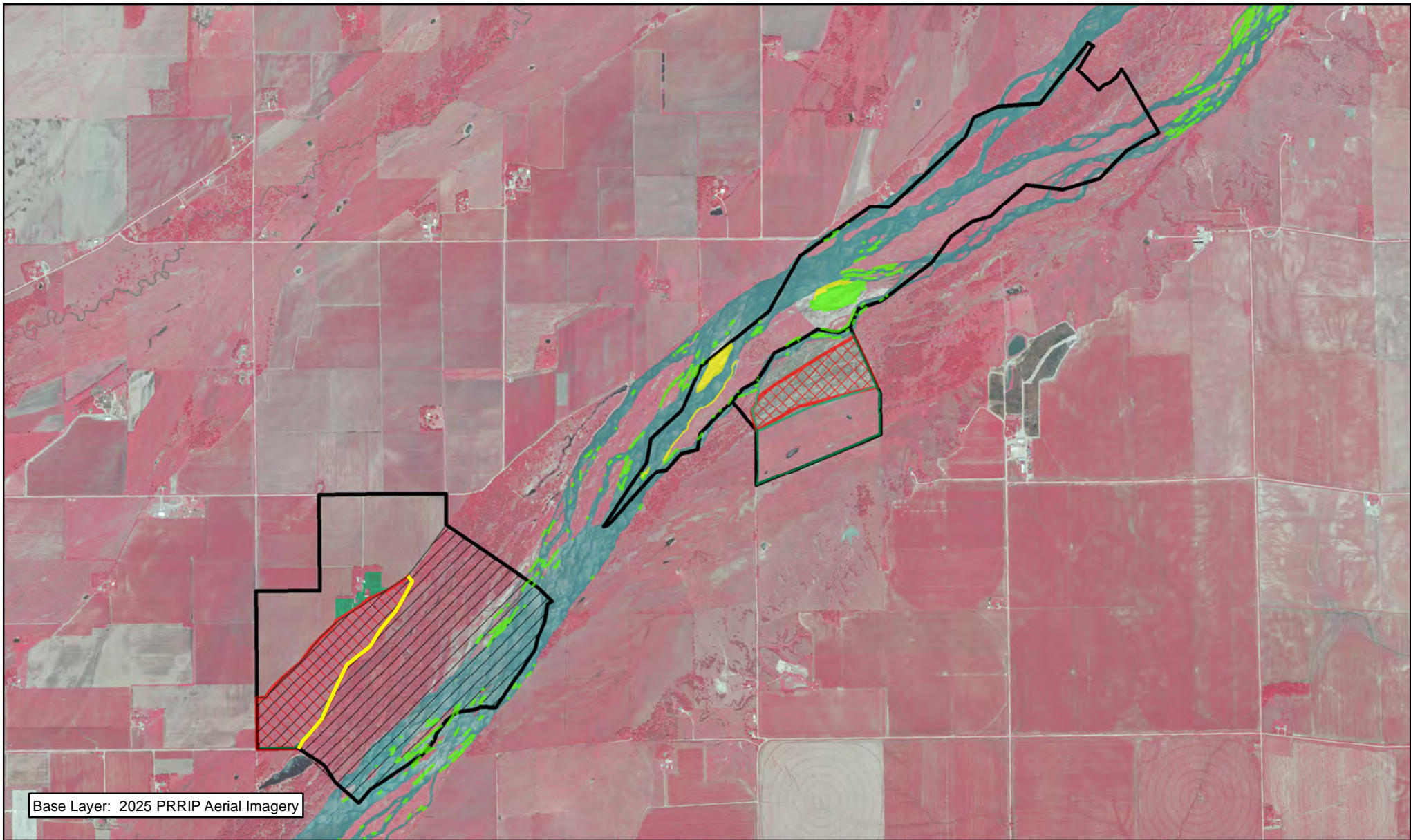
2025 Chapman Complex Budget Summary

Expenditures by Program Budget Line Item

Priority Area	Item	Budget Line Item	Estimated Expenditure	Actual Expenditure
Species Habitat	Improve Target Species Sand & Water Habitat	LP-2	\$18,000	\$8,851
Species Habitat	Whooping Crane Wet Meadow/ Grassland Habitat	LP-2	\$16,279	\$10,353
Subtotal			\$34,279	\$19,204
Operations and Maintenance	Property Maintenance and Agricultural Operations	LP-4	\$230,500	\$32,000
Total			\$264,779	\$51,204

Income







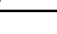
Tract	Item	Estimated Income	Actual Income
Tract 2019001	Grazing lease	\$7,000	\$5,500
Tract 2021001	Grazing lease-estimate	\$5,000	\$0
Tract 2021001	Building & Grain Bin Rent	\$3,140	\$1,215
Tract 2021001	Irrigated Crop lease-estimate	\$40,000	\$40,000
Total		\$55,140	\$46,715



Base Layer: 2025 PRRIP Aerial Imagery



Legend

-  Prescribed Fire
-  Preemergent
-  Shredding/Mowing
-  Disking
-  Noxious Weed Control
-  PVWMA Phrag Control
-  Barbwire Fence Construction



1.5 Miles

CHAPMAN COMPLEX FY 2025 ACTIVITIES

Date: 02/3/2026
By: TRT

Figure 17



PLATTE RIVER
RECOVERY IMPLEMENTATION PROGRAM

Page Intentionally Left Blank