



**REQUEST FOR PROPOSALS (RFP)**

**Spring 2013 Prescribed Fire Management Services**

**PLATTE RIVER RECOVERY IMPLEMENTATION PROGRAM**

Office of the Executive Director  
4111 4<sup>th</sup> Avenue, Suite 6  
Kearney, Nebraska 68845

**January 28, 2013**



**Contents**

I. OVERVIEW ..... 3

II. PROJECT DESCRIPTION & SCOPE OF WORK ..... 3

III. PROJECT BUDGET ..... 9

IV. FIELD AND OFFICE EQUIPMENT ..... 10

V. CONTRACT TERMS ..... 10

VI. SUBMISSION REQUIREMENTS ..... 11

VII. PROPOSAL RESPONSE FORMS ..... 14

**Appendix A** – PRRIP Prescribed Fire Standards

**Appendix B** – PRRIP Fireline Standards

**Appendix C**- Plum Creek Complex Lodge



1 **PLATTE RIVER RECOVERY IMPLEMENTATION PROGRAM**  
2 **REQUEST FOR PROPOSALS (RFP)**

3  
4 **SUBJECT:** Spring 2013 Prescribed Fire Management Services  
5 **REQUEST DATE:** January 28, 2013  
6 **PRE-PROPOSAL MEETING:** February 11, 2013  
7 **CLOSING DATE:** February 28, 2013  
8 **POINT OF CONTACT:** Tim Tunnell, Land Manager  
9 Headwaters Corporation  
10 (402) 219-3883  
11 [tunnellt@headwaterscorp.com](mailto:tunnellt@headwaterscorp.com)  
12

13 **I. OVERVIEW**

14 The Platte River Recovery Implementation Program (“Program” or “PRRIP”) was initiated on January 1,  
15 2007 between Nebraska, Wyoming, Colorado, and the Department of the Interior to address threatened  
16 and endangered species issues in the central and lower Platte River basin. The species considered in the  
17 Program, referred to as “target species”, are the whooping crane, piping plover, interior least tern, and  
18 pallid sturgeon.

19  
20 A Governance Committee (GC) reviews, directs, and provides oversight for Program activities. The GC  
21 is comprised of one representative from each of the three states, three water user representatives, two  
22 representatives from environmental groups, and two members representing federal agencies. The GC has  
23 named Dr. Jerry Kenny to serve as the Program Executive Director (ED). Dr. Kenny established  
24 Headwaters Corporation as the staffing mechanism for the Program. Program staff are located in  
25 Nebraska and Colorado and are responsible for assisting in carrying out Program-related activities.

26  
27 One of the major components of Program implementation is acquisition and management of 10,000 acres of  
28 habitat for the benefit of the target species. To date, approximately 9,500 acres have been acquired and  
29 are being managed by the Executive Director’s Office (EDO). Prescribed fire is an important tool used by  
30 the Program to manage grassland composition and structure. To date, the program has relied on strategic  
31 partnerships with local agencies and conservation organizations to implement prescribed fire. However,  
32 as Program land ownership has increased, prescribed fire needs have surpassed local capacity. **As such,**  
33 **the GC is requesting proposals from National Wildfire Coordinating Group (NGCG) qualified**  
34 **contractors for spring 2013 prescribed fire management services to be performed over a period of**  
35 **three (3) weeks starting March 18, 2013.**

36  
37 **II. PROJECT DESCRIPTION & SCOPE OF WORK**

38 **Project Description**

39 The Program is requesting proposals for prescribed fire management services for three (3) weeks during  
40 the spring of 2013. The performance period will begin on March 18, and will end on April 8. The  
41 Program would provide lodging during the performance period but the Contractor will be responsible for  
42 all labor, materials, equipment, tools, transportation and supplies required to complete the work. Fire  
43 management services will include, but are not limited to, prescribed fire planning and implementation,



44 fire-line preparation, post burn mop-up and monitoring, and if needed wildfire suppression. Contractors  
45 must be able to provide their own equipment.

46  
47 Contractors must also be available respond to any issues that may arise after the contractor's prescribed  
48 burn is complete. These issues could include: smoke management problems, mop-up concerns, post-burn  
49 monitoring needs or escapes. This response must occur during the same day of contact by the Rural Fire  
50 Protection Districts local fire chief with jurisdiction over the burn unit or EDO staff and must include the  
51 appropriate personnel, equipment or contingency measures.

52  
53 The PRRIP is requesting that the contractor be on site during the three (3) week period to fully utilize  
54 weather windows that meet prescriptions for each of the five (5) habitat complexes. In the event of  
55 inclement weather during the scheduled March 18 to April 8 time period, the PRRIP requests that the  
56 contractor provide a list of habitat management services that your firm could provide during the down  
57 time while on site or if the scheduled burns are finished early. The PRRIP will assume payment not to  
58 exceed fifteen (15) workdays if inclement weather does not allow for the successful completion of all  
59 scheduled burns.

60

## 61 **Scope of Work**

### 62 Habitat Complexes

63 Program lands are organized into approximately 2,000 to 3,000 acre blocks referred to as habitat  
64 complexes. There are five habitat complex distributed across the project area, containing the majority of  
65 land to be burned on an annual basis (**Figure-1**). The following description generally applies to areas that  
66 will be burned:

- 67 • Most burn blocks on these tracts have been burned once over the last five to ten years; stand types  
68 are primarily lowland, tall grass prairie that have been heavily invaded with introduced cool-  
69 season grasses and often include natural riparian forest;
- 70 • most burn units have been grazed and/or hayed;

71

72 The following sections of the scope of work provide specific information about the burn units within each  
73 habitat complex.

74

### 75 Plum Creek Complex

76 Contractors should be aware of the following points:

77

78 1. Plum Creek Complex is located less than 1 mile to the south of Interstate 80 between the towns of  
79 Lexington and Overton, NE.

80

81 2. The burn unit contains 1 tract of land and is located approximately 6 miles west of the the Plum Creek  
82 Complex ; mostly wetland/ grassland fuels; There is 1 burn unit (labeled A) and is approximately 69 acres  
83 (**Figure-2**).

84

85 3. All trees have been removed from the tract and the piles have been burned and buried. The tract is  
86 surrounded by cropland on the east, west, and south sides. The wetland extends to the north on the  
87 neighboring property.

88

89 4. The northern fire-line will be disked; the southern fire line will be a two-track road and crop stubble  
90 field. The east and west fire-lines will be disked cropfield. Fire-lines are often limited to roads, ditches,  
91 mowed/hayed lines and river/ slough edges; contractors should be comfortable burning from these



92 features; additional fire-line establishment can be conducted but must be authorized by the PRRIP Land  
93 Manager.

94

95 Cottonwood Ranch Complex

96 Contractors should be aware of the following points:

97

98 1. Cottonwood Ranch Complex is located less than 1 mile to the south of Interstate 80 between the towns  
99 of Overton and Elm Creek, NE.

100

101 2. Cottonwood Ranch complex contains 3 tracts of land and is 4 miles long with the majority of the land  
102 located on the south side of the main channel of the Platte river; mostly grassland fuels; There are three  
103 burn units (labeled A-C) and is approximately 311 acres and can be divided into smaller areas (**Figure-3**).

104

105 3. **Units A and B** are located south of the Platte River and are predominately lowland tall grass prairie  
106 heavily infested with tall wheatgrass. Grazing was not deferred on this unit during the 2012 grazing  
107 season. The primary firebreak is a 20-30 ft mowed line around the inside perimeter of both burn units.  
108 The secondary firebreak on the north is a drainage ditch that traverses the property along the north side of  
109 the both units, gravel road on the east and west sides, and black top on the south. There are manmade and  
110 natural wetland features on both units. **Unit C** is located directly east of Unit B. The tract is restored  
111 cropland that was broadcast seeded in the winter of 2011. Grazing/ haying on this unit was deferred  
112 during 2012. The primary firebreak around the perimeter of the unit is a 20-30ft mowed line. The  
113 secondary firebreak on the north is a hay meadow, a gravel road on the west, blacktop on the south, and a  
114 hayed grassland to the east.

115

116 4. Fire-lines are often limited to roads, ditches, mowed/hayed lines and river/ slough edges; contractors  
117 should be comfortable burning from these features; additional fire-line establishment can be conducted  
118 but must be authorized by the PRRIP Land Manager.

119

120 Elm Creek Complex

121 Contractors should be aware of the following points:

122

123 1. Elm Creek Complex is located less than 1/4 mile to the south of Interstate 80 between the towns of Elm  
124 Creek and Odessa, NE.

125

126 2. Elm Creek complex contains 4 tracts of land and is 2 miles long with two tracts being located on the  
127 north side of the Platte river and the other located on the south side of the Platte river. There are 3 burn  
128 units (labeled A-C) and is approximately 285 acres that can be divided into smaller areas (**Figure-4**).

129

130 3. **Units A and B** are located between Interstate 80 and the north channel of the Platte River. **Unit A** is a  
131 native hay meadow and **Unit B** is predominately riparian forrest. The primary firebreak on the north is a  
132 20-30ft mowed line and the secondary firebreak is Interstate 80. Trees have been cleared back  
133 approximately 60' on the east and west side on the two units and are bare ground. There is an 115Kv  
134 transmission line that extends the length of the tract on the north boundary of Unit B. There is a state  
135 owned wildlife management area on the west. **Unit C** is 150 acres located within a ~700 acre pasture. The  
136 unit has undergone extensive tree clearing over the past 20+ years and construction of wetland features in  
137 the past 5 years. The unit is predominatly tallgrass prairie and has a history of moderate grazing The  
138 north boundary is a 20-30 ft mowed line and the secondary firebreak is the main channel of the Platte  
139 River. The west property outside of the boundary is privately owned, and the south boundary is a wetted



140 slough. There is an active bald eagle nest in a group of trees at the northeast corner of the burn unit . Care  
141 must be taken to avoid allowing fire to escape to this area.

142  
143 4. Fire-lines are often limited to roads, ditches, mowed/hayed lines and river/ slough edges; contractors  
144 should be comfortable burning from these features; additional fire-line establishment can be conducted  
145 but must be authorized by the PRRIP Land Manager.

146  
147 Fort Kearny Complex

148 Contractors should be aware of the following points:

149  
150 1. The Fort Kearny Complex is located less than 1/4 mile to the south of Interstate 80 and is located  
151 between 2 channels of the Platte River near the town of Kearney, NE and Highway 10.

152  
153 2. The Fort Kearny complex contains 3 tracts of land and is 5 miles long. There are 3 burn units (labeled  
154 A-C) and is approximately 408 acres and can be divided into smaller areas (**Figure-5**).

155  
156 3. **Unit A** is located between Interstate 80 and the north channel of the Platte River and is predominately  
157 open grassland with a mature shelterbelt along the northern edge of the unit. The primary firebreak on the  
158 north, south and west is a 20-30 ft mowed line and on the east is a 2 track road that extends the length of  
159 the unit and crop field (planted to corn in 2012). The secondary firebreak to the north is a gravel road  
160 between the unit and Interstate 80. The secondary firebreak to the south is a 2 track road on the south side  
161 of the fence between the unit and the north channel of the Platte River. **Unit B** is an open wet meadow  
162 heavily infested with intermediate wheatgrass. The unit has been heavily grazed since 2009. The west  
163 and south sides of the unit are privately owned cropfield, the east side is wet meadow heavily infested  
164 with intermediate wheatgrass and eastern red cedar. The primary firebreak around the inside perimeter of  
165 the burn unit is a 20-30 ft mowed line. **Unit C** is located between the north channel of the Platte River and  
166 a gravel county road. The unit was previously cropfield and was broadcast seeded with native grass in  
167 winter of 2011. The unit was hayed in the fall of 2012 and fuels will be light. The primary firebreak on  
168 the north is a gravel county road, on the south is the Platte River, on the east is privately owned cropfield,  
169 and the west is a mowed line.

170  
171 4. Fire-lines are often limited to roads, ditches, mowed/hayed lines and river/ slough edges; contractors  
172 should be comfortable burning from these features; additional fire-line establishment can be conducted  
173 but must be authorized by the PRRIP Land Manager.

174  
175 Shoemaker Island Complex

176 Contractors should be aware of the following points:

177  
178 1. Shoemaker Island Complex is located less than 1/2 mile to the south of Interstate 80 between 2  
179 channels of the Platte River near the towns of Wood River and Alda, NE.

180  
181 2. Shoemaker Island complex contains 2 tracts of land and is 3 miles long; There are 3 burn units (labeled  
182 A-C) and is approximately 341 acres and can be divided into smaller areas (**Figure-6**).

183  
184 3. **Unit A** is grazed and was not deferred in 2012. The south, east, and west boundaries will be mowed  
185 lines and the north boundary is cropfield and gravel county road. **Unit B** is a hayed meadow. The south,  
186 east, and west boundaries will be mowed lines and the north boundary is a gravel county road. **Unit C** is



187 a native grassland that was moderately grazed in 2012. The north and east firebreak is a two track road  
188 and the south firebreak is the Platte River.

189  
190 4. Fire-lines are often limited to roads, ditches, mowed/hayed lines and river/ slough edges; contractors  
191 should be comfortable burning from these features; additional fire-line establishment can be conducted  
192 but must be authorized by the PRRIP Land Manager.

193  
194 Smoke Sensitive Areas:  
195 The tracts are primarily located in rural landscape with scattered farmsteads however they are near  
196 interstates, major highway(s) and/or populated areas.

197  
198 Communities at Risk:  
199 Nine communities exist within the PRRIP project area: Lexington-Grand Island (**Figure-7**). Their  
200 proximity to PRRIP properties makes them vulnerable to smoke and other hazards related to wildfire and  
201 prescribed burning. Additional outlying communities that may also be affected by smoke include  
202 Bertrand, Loomis, Holdrege, Funk, Axtell, Minden, Heartwell, Kenesaw, Juniata, Hastings, Doniphan,  
203 Cairo, Riverdale, Amherst, and Miller (**Figure-7**).

204  
205 Wildfire Suppression and Escaped Prescribed Fires:  
206 In the event of an escaped prescribed fire originally ignited by the contractor, contractors may be  
207 responsible for coordinating with and working under the direction of the Rural Fire Protection Districts  
208 local fire chief with jurisdiction over the area on containment, mop-up and monitoring issues until fire is  
209 called out by the appropriate agency (**Figure-8**). During this process contractors may be responsible for  
210 paying suppression costs charged for fire suppression and may be required to conduct work or provide  
211 assistance without compensation by the PRRIP.

212  
213  
214 Long-Term Mop-Up, Smoke Mangement, and Re-Burn Situations:  
215 Compliance with smoke management guidelines are voluntary in Nebraska, however, the Contractor shall  
216 make every effort to meet them. All prescribed fire plans shall address smoke management as a primary  
217 issue and prescription parameter. Contractors may be required to conduct long-term mop-up, monitoring  
218 and smoke management procedures without compensation. This may occur if PRRIP personnel determine  
219 a lack of due diligence and planning occurred before ignition began or if proper procedures were not  
220 taken to mop-up and secure fire after ignition was completed.

221  
222 Submittals:  
223 *Prescribed Burn Plans* - Burn plans must be developed by a NWCG qualified Rx Burn planner prior to  
224 the proposed burn date. Plans will be written on a NWCG approved burn form or an alternative form  
225 approved by the PRRIP Land Manager. The prescribed burn plan shall be in accordance with Nebraska  
226 Statutes subsection 81-520.01 and 81-520-02. **Fully completed, legible, plans with a copy of the open**  
227 **burn permit will be delivered to the PRRIP Land Manager within five business days following the**  
228 **completion of each burn.** These plans must be signed by the Burn Manager. Plans can be scanned and e-  
229 mailed, faxed or hand delivered. They must include all actual weather data recorded the day of the burn  
230 and any other planning notes recorded before or during the burn.

231  
232 Burn Managers will follow the PRRIP Weather Parameter Standards (**APPENDIX–A**) when planning  
233 and implementing prescribed burns. Fire weather forecasts for the appropriate county containing the burn



234 site will be used the day of the burn. These are available from the following National Weather Service  
235 online sources:

236 Hastings:

237 <http://www.crh.noaa.gov/gid/?n=firewx>

238 North Platte:

239 <http://www.crh.noaa.gov/lbf/forecasts/firewx/firewx.php>

240

241 **A copy of these forecasts must accompany the burn plan when submitted to the PRRIP.**

242

243 The PRRIP requires that contractors keep good records of all pre-burn planning and site evaluation  
244 measures as well as actual firing techniques used during prescribed burn implementation. This includes  
245 full documentation of information such as: burn purpose and objective, forecasted and actual weather  
246 conditions, spot weather forecasts, soil moisture conditions (including soil saturation and depth to water  
247 in wetlands), days since rain, amount of rain received on the actual burn block, Keetch-Byram drought  
248 index (KBDI), etc. This information should be included in the burn plan or as an attachment.

249

250 The burn purpose and burn objective will be determined by PRRIP staff. This information will be  
251 conveyed to contractors before the burn is implemented to help with burn plan development. In general,  
252 the burn purpose will describe an overall goal such as site preparation or hazard reduction and the burn  
253 objective will identify a specific, measurable, parameter such as remove 75% of available fuels or top-kill  
254 50% of trees less than three (3) inches diameter at breast height (DBH).

255

256 Prior to the burn, Burn Managers will evaluate the site to determine the type of ignition methods, firing  
257 techniques and weather conditions needed to meet the pre-determined objective, safely conduct the burn,  
258 and minimize negative effects such as duff ignition/soil damage, crown scorch, or smoke management  
259 problems. This information will be included in the burn plan.

260

261 A copy of the burn plan and a site map showing burn area location, fire-lines, roads, and natural features  
262 shall be in the possession of the burn manager at the time of the burn. PRRIP staff will provide burn  
263 managers with a map and/or ground location point of any areas personnel should avoid. PRRIP staff may  
264 instruct personnel to avoid disking, plowing or igniting fires in these areas. These sites may contain  
265 historical resources, threatened and endangered plant or animal locations, public use facilities or exotic  
266 plant infestations.

267

268 Contractors will notify the PRRIP's Land Manager as soon as possible but at least within 24 hours if the  
269 following circumstances occur after the burn has been completed: 1) fire has escaped, 2) burn objectives  
270 were not met or 3) negative conditions or smoke management problems occurred.

271

272 *Prescribed Burn Notification* - By 5:00 PM one day prior to ignition or by 8:30 AM the day of the burn,  
273 the Burn Manager responsible for conducting the burn will notify the PRRIP Land Manager by *e-mail*  
274 indicating the location of the burn area (Section, Township, Range), the tract name/number, the county  
275 where the burn will be conducted, and the approximate acreage planned.

276

277 *Implement Burn Plans* – Prescribed fires on PRRIP lands are required to be conducted in compliance with  
278 Nebraska Statutes subsection 81-520.01 and 81-520-02 and any other applicable laws. The Contractor  
279 shall monitor all burn units and to determine when a unit is in prescription. All prescribed fires will also  
280 be conducted in compliance with all aspects of the PRRIP Prescribed Fire *Standards (APPENDIX-A)*.

281





282  
283 Fireline installation and plowing will follow guidelines identified in the PRRIP Fireline Standards  
284 (APPENDIX-B).

285  
286 *Escaped Prescribed Fires* - In the event of an escaped prescribed fire, contractors shall initiate  
287 suppression actions, contact directly affected parties, Rural Fire Protection Districts local fire chief with  
288 jurisdiction over the area, and then notify the PRRIP Land Manager or the Land Specialist. In general, the  
289 PRRIP Land Manager or Land Specialist will lead all discussion with affected parties. The Burn Manager  
290 responsible for conducting the burn should document the conditions of the escape using photos, GPS data,  
291 maps, and a written narrative describing the incident including any adverse results and any lessons  
292 learned or measures that could be taken in the future to prevent another incident. Any involvement from  
293 local fire department with jurisdiction over the area to contain the escape should also be documented.  
294 Written or email communication outlining the general details of the incident should be sent to the PRRIP  
295 Land Manager within 48 hours. A full report documenting all the above information should be submitted  
296 to the PRRIP within one week following the incident.

297  
298 *Shapefiles* – Before a burn is conducted, the PRRIP will provide contractors with GIS shapefiles of areas  
299 to be burned. After the burn is complete, contractors must submit a shapefile showing the areas that were  
300 actually burned. These shapefiles must be included with the each invoice. To receive payment, the  
301 acreage identified in shapefiles must be identical to the acreage listed on the invoice to the nearest 1/10  
302 acre. Shapefiles will be projected to: NAD 1983 Nebraska State Plane Feet. The PRRIP shall field verify  
303 and pay based on this acreage.

304  
305 *Equipment Information:*  
306 *Minimum Wildland Engine Specifications:* Wildland engines used by contractors on PRRIP burns must  
307 meet or exceed all equipment specifications of the National Wildfire Coordinating Group (NWCG) for  
308 Type 6 engines, with the added requirements of four-wheel drive (4X4) and foam proportioner. Type 6  
309 specifications include: minimum tank size of 150 gallons; a pump rated at 50 gallons per minute (GPM)  
310 @ 100 pounds per square inch (PSI); a hose and reel with a minimum of 50’ of 1” hose; 300’ feet of  
311 additional 1” hose; fire hydrant adapters and the ability to draft water.

312  
313 On most burns, contractors will have a minimum of one engine and two UTV units on site.

314  
315 Contractors are also required to provide all personal protective equipment (PPE) listed in the Program’s  
316 Prescribed Fire Standard under Training and Safety Requirements (National Wildfire Coordinating Group  
317 (NWCG) Standard). (APPENDIX – A)

### 318 319 **III. PROJECT BUDGET**

320 Based on the limited number of burn days available each year, the variability of tract size and diverse  
321 locations, and variability of fuel characteristics, the Program has determined it needs a contractor to be  
322 on-site with fully staffed/equipped burn crew ready to mobilize when weather conditions are appropriate.  
323 As such, the Program requests that Contractors submit a “time and materials not to exceed” budget in the  
324 proposal that would provide for full turn-key fire management services for the full performance period of  
325 three weeks. Additional proposal submission requirements are presented in Section VI.

326  
327  
328  
329



330 **IV. FIELD AND OFFICE EQUIPMENT**

331 Potential Contractors will own or acquire all field and office equipment and software required to provide  
332 prescribed fire management services.  
333

334 **V. CONTRACT TERMS**

335 The selected Contractor will be retained by: Nebraska Community Foundation  
336 PO Box 83107  
337 Lincoln, NE 68501  
338

339 The Contractor will be subject to (but not limited to) the following contract terms:  
340

341 Certification/Training Requirements: See certification and training requirements in Appendix A.  
342

343 Insurance Requirements: If awarded, contractor shall represent and guarantee that all employees, agents,  
344 servants or representatives of contractor, and all employees, agents, servants, or representatives of  
345 subconsultants are covered by workers’ compensation insurance as required by Nebraska Statute. Prior to  
346 entering into contract with PRRIP, contractor shall furnish PRRIP with certificates of insurance, naming  
347 PRRIP as named or additional insured without waiving any defense of sovereign immunity or increasing  
348 the limits of PRRIP’s liability in excess of Nebraska State Statute for item (3) below, providing evidence  
349 that contractor has in full force and effect the following minimum insurance with insurers authorized to  
350 do business in the State of Nebraska. The certificate of insurance shall also provide that PRRIP shall be  
351 notified in writing by the carrier at least 30 days prior to any cancellation of said insurance.  
352

- 353 1. Workers’ compensation insurance as required above;
- 354 2. Motor vehicular liability insurance with limits of not less than \$1,000,000 combined single limit which  
355 insurance shall be applicable to any and all vehicles utilized by contractor to provide the services  
356 requested by PRRIP;
- 357 3. General liability insurance for all services rendered by contractor for the requested services with a  
358 minimum of \$1,000,000 personal and advertising injury and \$1,000,000 general aggregate.  
359

360 Contractor Liability: If a wildfire occurs as the result of the Contractor’s failure to follow the approved  
361 Prescribed Fire Plan, the Contractor shall be liable for all damages and all costs for labor, subsistence,  
362 equipment, supplies, and transportation deemed necessary to control the escaped fire and repair/replace  
363 all PRRIP, personal and/or non-federal public property.  
364

365 Open Burning Permits: A burning permit from the Rural Fire Protection Districts fire chief with  
366 jurisdiction over the area to be burned is required. Names and contact information of the local fire chief  
367 will be available and it will be the responsibility of the burn manager to make contact with the fire chief,  
368 present the written burn plan and obtain a signed copy of the “Open Burning Permit.” A copy of this burn  
369 permit must be provided to PRRIP with the final copy of burn plan for each burn unit.  
370

371  
372  
373  
374  
375  
376  
377



378 **VI. SUBMISSION REQUIREMENTS**

379 All interested parties having experience providing the services listed in this RFP are requested to submit a  
380 proposal.

381  
382 *Instructions for Submitting Proposals*

383 One original and five (5) copies of your proposal and supporting documentation must be submitted by  
384 mail to Tim Tunnell *no later than 12:00 PM Central Time Thursday, February 28, 2013*. A proposal is  
385 late if received after that time and will not be considered. Proposals should be submitted to:

386  
387 Tim Tunnell, Land Manager  
388 Platte River Recovery Implementation Program  
389 4111 4<sup>th</sup> Avenue, Suite 6  
390 Kearney, NE 68845

391  
392 Questions regarding the information contained in this RFP should be submitted to Tim Tunnell at  
393 [tunnelt@headwaterscorp.com](mailto:tunnelt@headwaterscorp.com). A list of compiled Contractor questions and responses will be maintained  
394 on the Program web site ([www.PlatteRiverProgram.org](http://www.PlatteRiverProgram.org)) in the same location as this RFP solicitation.

395  
396

397 RFP Schedule

398 The ED Office expects to complete the selection process and award the work by approximately February  
399 24, 2012. The following table represents the RFP schedule:  
400

Description	Date	Time (Central)
Issue RFP	January 28, 2013	NA
Pre-proposal meeting	February 11, 2013	1:00 PM
Last day for respondents to submit questions regarding the RFP	February 18, 2013	12:00 PM
Proposals due from respondents	February 28, 2013	12:00 PM
Evaluation of proposals	February 28, 2013	
Award of Work	On February 28, 2013	
Start of Work	Approximately March 18, 2013	
Completion of Work	Approximately April 8, 2013	

401

402 Pre-Proposal Meeting

403 A mandatory pre-proposal meeting of interested parties will be held on February 11, 2013 from 1:00 to  
404 2:00 p.m. Central Time via conference call for the purpose of familiarizing the respondents with the work  
405 scope and requirements included herein before submitting a response to this RFP. Please email Tim  
406 Tunnell ([tunnell@headwaterscorp.com](mailto:tunnell@headwaterscorp.com)) for the conference call dial-in information along with a list of  
407 people from your party expected to join in the pre-proposal conference call by 12:00 p.m. central time on  
408 February 7, 2013.

409

410 It is the Consultant's responsibility, while at the pre-proposal meeting/conference call, to ask questions  
411 necessary to understand the RFP so the respondent can submit a proposal that is complete and in  
412 accordance with RFP requirements. There shall be no minutes distributed by the ED Office regarding the  
413 meeting.

414

415 Proposal Content

416 Proposals must include the following contents and documentation:  
417

418

418 1) **Executive summary** that presents a brief firm overview that condenses and highlights the contents of  
419 the proposal in such a way as to provide a broad understanding of the Contractor's qualifications and  
420 proposal.

421

422 2) **Project Understanding** that demonstrates the Contractor's understanding of project objectives and  
423 identifies issues critical to project success.

424

425 3) **Project approach** that documents how the Contractor would organize and execute the scope of work  
426 detailed in this RFP and provides project team organization, certifications, and responsibilities and  
427 specifies which team members will work on each specific task.

428

429 4) **Qualifications and project experience** relevant to this project including the involvement/role of the  
430 proposed team in those projects. A sample project experience/reference form is included in Section  
431 VII.

432

433 5) **Equipment** list that includes all equipment that would be mobilized for this project.  
434



- 435 **6) Compensation** for all time and materials necessary to complete the scope of work. A compensation  
436 form has been included in Section VII.  
437
- 438 **7) Description of insurance** shall be provided with the proposal. Proof of insurance will be required  
439 before a contract is issued. Minimum insurance requirements are described in Section V.  
440

441 Criteria for Evaluating Proposals

442 The GC will appoint a Proposal Selection Panel that will evaluate all proposals and select a Consultant  
443 based on the following principal considerations:  
444

- 445 1. Understanding of the overall objectives of the project and approach to meeting those objectives.  
446
- 447 2. Qualifications and experience completing comparably sized prescribed burn projects safely and in a  
448 timely manner.  
449
- 450 3. The number/type of qualified personnel/equipment proposed to be dedicated to the project.  
451
- 452 4. Ability to provide turn-key prescribed burns services or provide multiple crews.  
453
- 454 5. Price proposal.  
455

456 The winning proposal will be selected to best meet overall project objectives. Should the successful  
457 Proposers be unable at any time to accomplish the work they have been contracted for or meet any of the  
458 requirements or standards listed in this Proposal, the next ranked Contractor may be contacted to provide  
459 the required work.  
460

461 Award Notice

462 After completing the evaluation of all proposals, the Proposal Selection Panel will select a Contractor.  
463 That firm will negotiate with the ED Office to establish a fair and equitable contract. If an agreement  
464 cannot be reached, a second firm will be invited to negotiate and so on. If the Program is unable to  
465 negotiate a mutually satisfactory contract with a Consultant, it may, at its sole discretion, cancel and  
466 reissue a new RFP.  
467

468 Program Perspective

469 The Program GC has the sole discretion and reserves the right to reject any and all proposals received in  
470 response to this RFP and to cancel this solicitation if it is deemed in the best interest of the Program to do  
471 so. Issuance of this RFP in no way constitutes a commitment by the Program to award a contract, or to  
472 pay Contractor's costs incurred either in the preparation of a response to his RFP or during negotiations,  
473 if any, of a contract for services. The Program also reserves the right to make amendments to this RFP by  
474 giving written notice to Contractors, and to request clarification, supplements, and additions to the  
475 information provided by a Contractor.  
476

477 By submitting a proposal in response to this solicitation, Contractors understand and agree that any  
478 selection of a Contractor any decision to reject any or all responses or to establish no contracts shall be at  
479 the sole discretion of the Program. To the extent authorized by law, the Contractor shall indemnify, save,  
480 and hold harmless the Nebraska Community Foundation, the states of Colorado, Wyoming, and  
481 Nebraska, the Department of the Interior, members of the GC, and the ED Office, their employees,  
482 employers, and agents, against any and all claims, damages, liability, and court awards including costs,



483 expenses, and attorney fees incurred as a result of any act or omission by the Contractor or its employees,  
484 agents, sub-Contractors, or assignees pursuant to the terms of this project. Additionally, by submitting a  
485 proposal, Contractors agree that they waive any claim for the recovery of any costs or expenses incurred  
486 in preparing and submitting a proposal.

487

488 **VII. PROPOSAL RESPONSE FORMS**

489 The following forms are to be submitted as part of Contractor proposals.

490

491



**PLATTE RIVER RECOVERY IMPLEMENTATION PROGRAM**

**RATE:**

Bid price should include providing a full crew stationed within the project area to be available to burn as weather allows for a 3 week detail. All pre-burn planning, ignition and stand-by time, mop-up and monitoring time (within the first 24 hours after ignition is complete) as well as all other labor, materials, equipment, tools, transportation and supplies required to complete the work. It is expected that a 3 week prescribed burn detail will be required to meet prescribed burning objectives.

The Contractor is required to submit quotes for all work Items below.

Item No.	Description	Unit	Bid Price
001	Mobilization <sup>1</sup>	LS	\$ _____
002	Pre-burn planning <sup>2</sup>	LS	\$ _____
003	Labor of crew/ week <sup>3</sup>	LS	\$ _____
004	Equipment/ week <sup>4</sup>	LS	\$ _____
005	Demobilization <sup>5</sup>	LS	\$ _____
	Total		\$ _____

<sup>1</sup>Item includes costs to mobilize all personnel and equipment needed to complete the work from contractor’s base of operations to Overton, NE.

<sup>2</sup>Item includes burn plan development, burn unit reconnaissance, obtaining burn permit from appropriate fire department, and neighbor notifications for each unit.

<sup>3</sup>Item includes cost of labor for full NWCG crew for a 3 week prescribed burning detail within PRRIP project area. This includes ignition and stand by time, mop up and monitoring time within the first 24 hours after ignition is complete on each unit.

<sup>4</sup>Item includes all materials, equipment, tools, transportation, fuel and supplies to complete the work for a 3 week prescribed burning detail.

<sup>5</sup>Item includes costs to demobilize from Overton, NE to contractor’s base of operations.

**NOTE: Lodging for prescribed fire contractor will be provided at the Program’s Plum Creek Complex. Existing lodge at that location will accommodate a crew of approximately eight. See Appendix C for more information.**



**PLATTE RIVER RECOVERY IMPLEMENTATION PROGRAM**

**SIMILAR PROJECTS:**

520  
521  
522  
523  
524  
525  
526  
527  
528  
529  
530  
531  
532  
533  
534  
535  
536  
537  
538  
539  
540  
541  
542  
543  
544  
545  
546  
547  
548  
549  
550  
551  
552  
553  
554  
555  
556  
557  
558  
559  
560  
561  
562  
563  
564  
565  
566  
567  
568

COMPLETED PROJECT: \_\_\_\_\_

AGENCY/COMPANY: \_\_\_\_\_

CONTACT: \_\_\_\_\_ TELEPHONE: \_\_\_\_\_

START DATE: \_\_\_\_\_ COMPLETION DATE: \_\_\_\_\_

(month/year)

(month/year)

NUMBER OF ACRES RESPONSIBLE FOR BURNING/YEAR: \_\_\_\_\_

DESCRIPTION OF STAND TYPE(S)/FUEL LEVEL(S) BURNED: \_\_\_\_\_

IGNITION METHOD(S) USED: \_\_\_\_\_

TOTAL ACRES BURNED: \_\_\_\_\_

CERTIFIED PRESCRIBED BURN MANAGER(S) ASSIGNED TO PROJECT: \_\_\_\_\_

COMPLETED PROJECT: \_\_\_\_\_

AGENCY/COMPANY: \_\_\_\_\_

CONTACT: \_\_\_\_\_ TELEPHONE: \_\_\_\_\_

START DATE: \_\_\_\_\_ COMPLETION DATE: \_\_\_\_\_

(month/year)

(month/year)

NUMBER OF ACRES RESPONSIBLE FOR BURNING/YEAR: \_\_\_\_\_

DESCRIPTION OF STAND TYPE(S)/FUEL LEVEL(S) BURNED: \_\_\_\_\_

IGNITION METHOD(S) USED: \_\_\_\_\_

TOTAL ACRES BURNED: \_\_\_\_\_

CERTIFIED PRESCRIBED BURN MANAGER(S) ASSIGNED TO PROJECT: \_\_\_\_\_





569 COMPLETED PROJECT: \_\_\_\_\_

570

571 AGENCY/COMPANY: \_\_\_\_\_

572 CONTACT: \_\_\_\_\_ TELEPHONE: \_\_\_\_\_

573

574 START DATE: \_\_\_\_\_ COMPLETION DATE: \_\_\_\_\_

575 (month/year) (month/year)

576 NUMBER OF ACRES RESPONSIBLE FOR BURNING/YEAR: \_\_\_\_\_

577

578 DESCRIPTION OF STAND TYPE(S)/FUEL LEVEL(S) BURNED: \_\_\_\_\_

579 \_\_\_\_\_

580 \_\_\_\_\_

581

582 IGNITION METHOD(S) USED: \_\_\_\_\_

583

584 TOTAL ACRES BURNED: \_\_\_\_\_

585

586 CERTIFIED PRESCRIBED BURN MANAGER(S) ASSIGNED TO PROJECT: \_\_\_\_\_

587 \_\_\_\_\_

588 \_\_\_\_\_

589

590

591

592

593 COMPLETED PROJECT: \_\_\_\_\_

594

595 AGENCY/COMPANY: \_\_\_\_\_

596 CONTACT: \_\_\_\_\_ TELEPHONE: \_\_\_\_\_

597

598 START DATE: \_\_\_\_\_ COMPLETION DATE: \_\_\_\_\_

599 (month/year) (month/year)

600 NUMBER OF ACRES RESPONSIBLE FOR BURNING/YEAR: \_\_\_\_\_

601

602 DESCRIPTION OF STAND TYPE(S)/FUEL LEVEL(S) BURNED: \_\_\_\_\_

603 \_\_\_\_\_

604 \_\_\_\_\_

605

606 IGNITION METHOD(S) USED: \_\_\_\_\_

607

608 TOTAL ACRES BURNED: \_\_\_\_\_

609

610 CERTIFIED PRESCRIBED BURN MANAGER(S) ASSIGNED TO PROJECT: \_\_\_\_\_

611 \_\_\_\_\_

612 \_\_\_\_\_

613

614

615

616



**PLATTE RIVER RECOVERY IMPLEMENTATION PROGRAM**

**REFERENCES:**

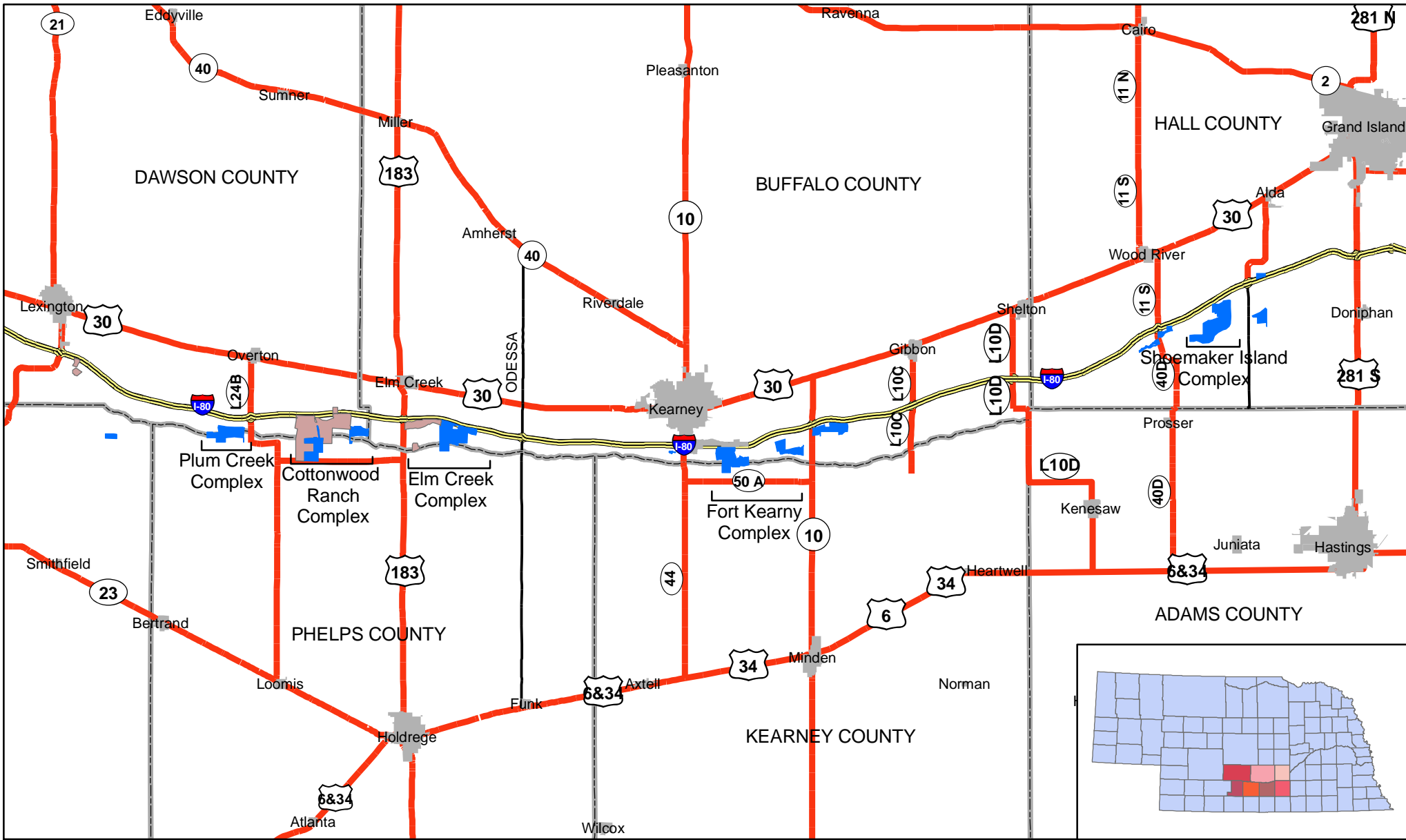
(Names/address/telephone of three clients who can attest to your experience as it relates to the services you are proposing.)

617  
618  
619  
620  
621  
622  
623  
624  
625  
626  
627  
628  
629  
630  
631  
632  
633  
634  
635  
636  
637  
638  
639  
640  
641  
642  
643  
644  
645  
646  
647  
648  
649

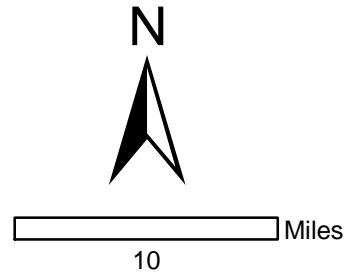
FIRM NAME: \_\_\_\_\_  
ADDRESS: \_\_\_\_\_  
CONTACT PERSON: \_\_\_\_\_  
TELEPHONE: \_\_\_\_\_  
EMAIL: \_\_\_\_\_  
FAX: \_\_\_\_\_

FIRM NAME: \_\_\_\_\_  
ADDRESS: \_\_\_\_\_  
CONTACT PERSON: \_\_\_\_\_  
TELEPHONE: \_\_\_\_\_  
EMAIL: \_\_\_\_\_  
FAX: \_\_\_\_\_

FIRM NAME: \_\_\_\_\_  
ADDRESS: \_\_\_\_\_  
CONTACT PERSON: \_\_\_\_\_  
TELEPHONE: \_\_\_\_\_  
EMAIL: \_\_\_\_\_  
FAX: \_\_\_\_\_

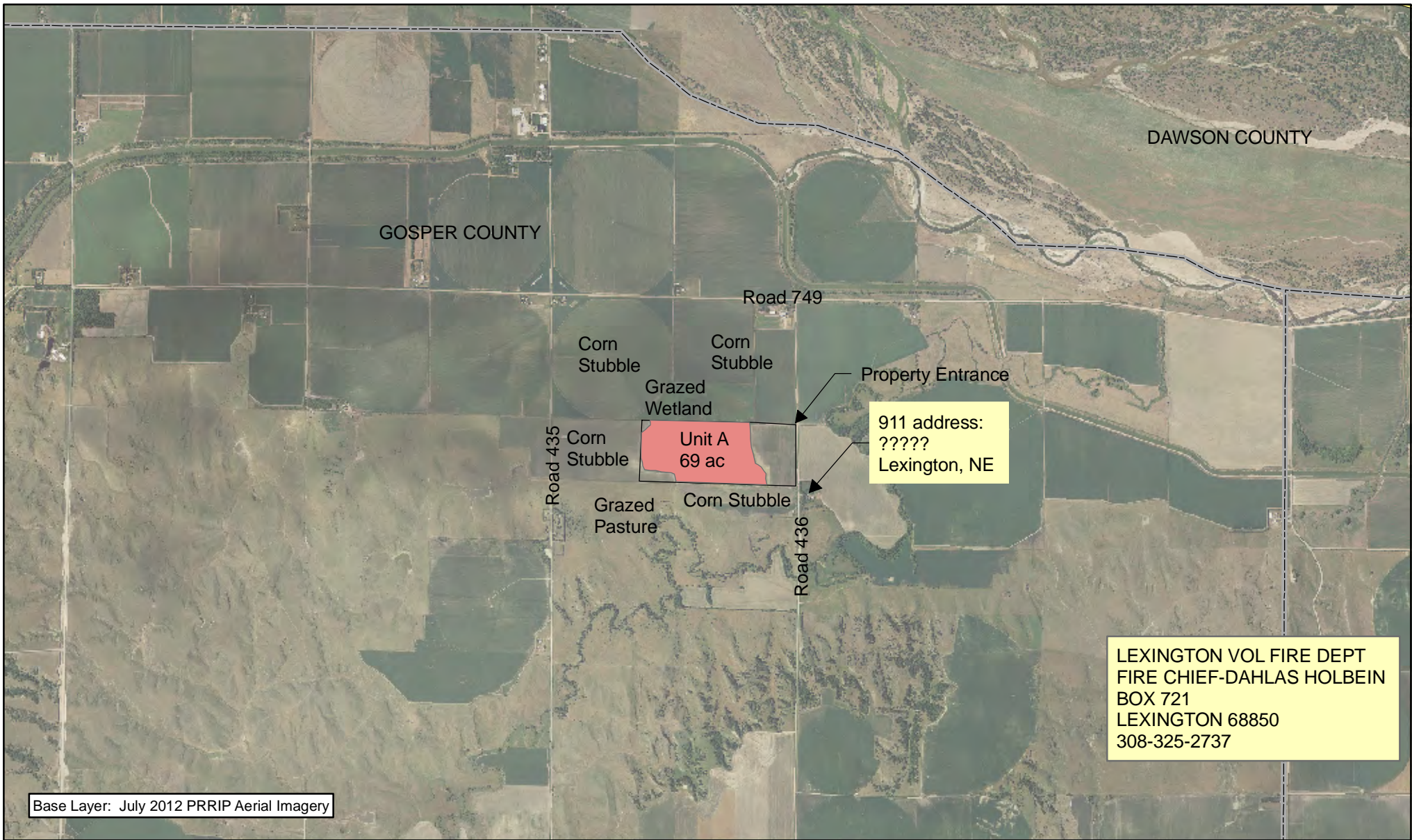


- Legend**
- County
  - Property Boundary**
  - PRRIP
  - NPPD



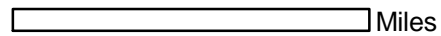
**HABITAT COMPLEXES**  
 FY 2013  
 SPRING  
 BURN UNITS  
 Date: 1/18/2013  
 By: TRT

Figure 1



**Legend**

- Property Boundary
- County
- 2013

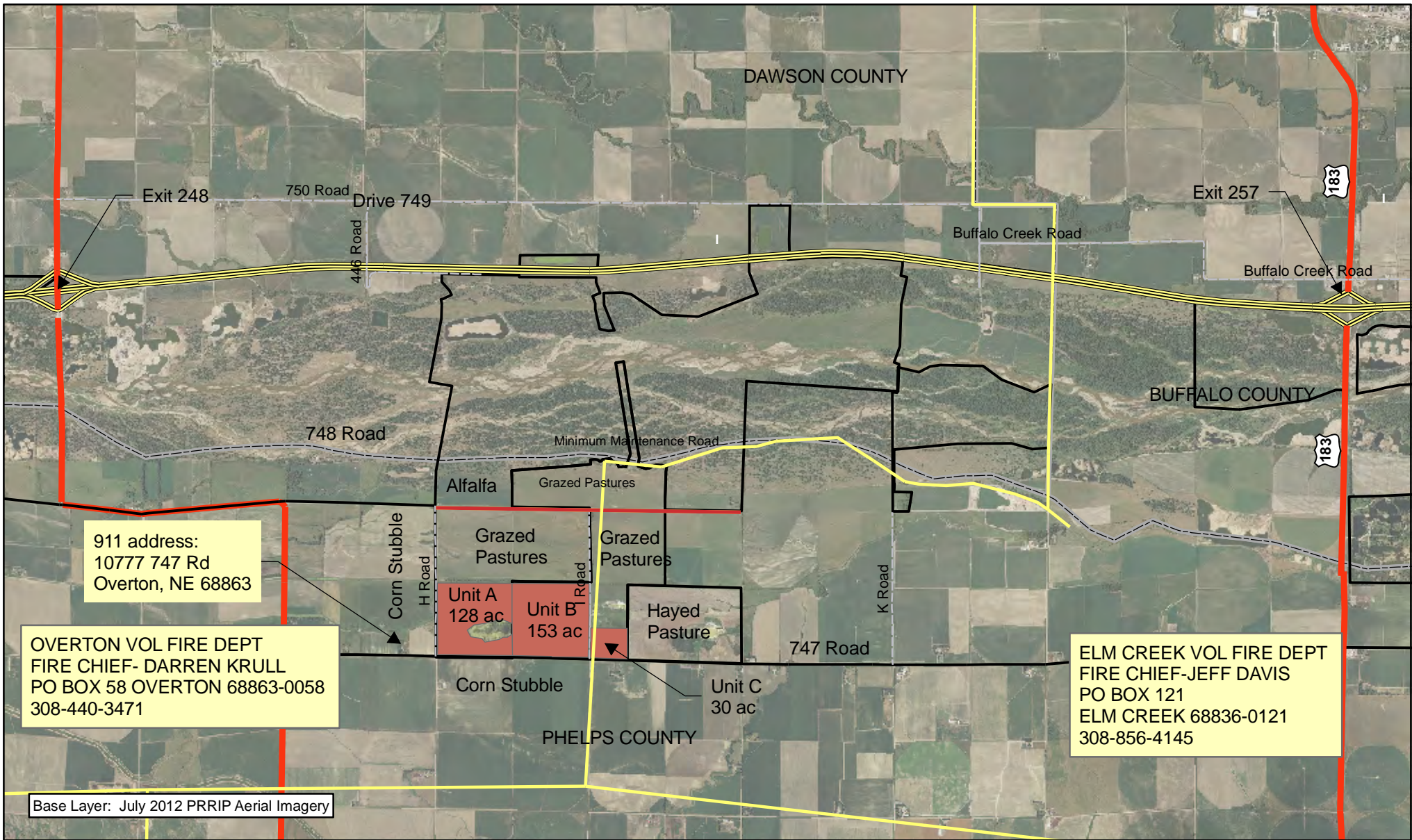


**PLUM CREEK COMPLEX**  
 FY 2013  
 SPRING  
 BURN UNIT

Date: 1/18/2013  
 By: TRT

Figure 2





911 address:  
10777 747 Rd  
Overton, NE 68863

OVERTON VOL FIRE DEPT  
FIRE CHIEF- DARREN KRULL  
PO BOX 58 OVERTON 68863-0058  
308-440-3471

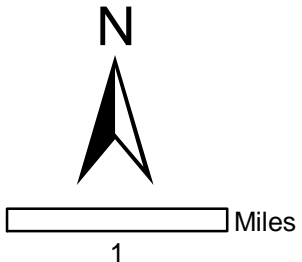
ELM CREEK VOL FIRE DEPT  
FIRE CHIEF-JEFF DAVIS  
PO BOX 121  
ELM CREEK 68836-0121  
308-856-4145

Base Layer: July 2012 PRRIP Aerial Imagery



**Legend**

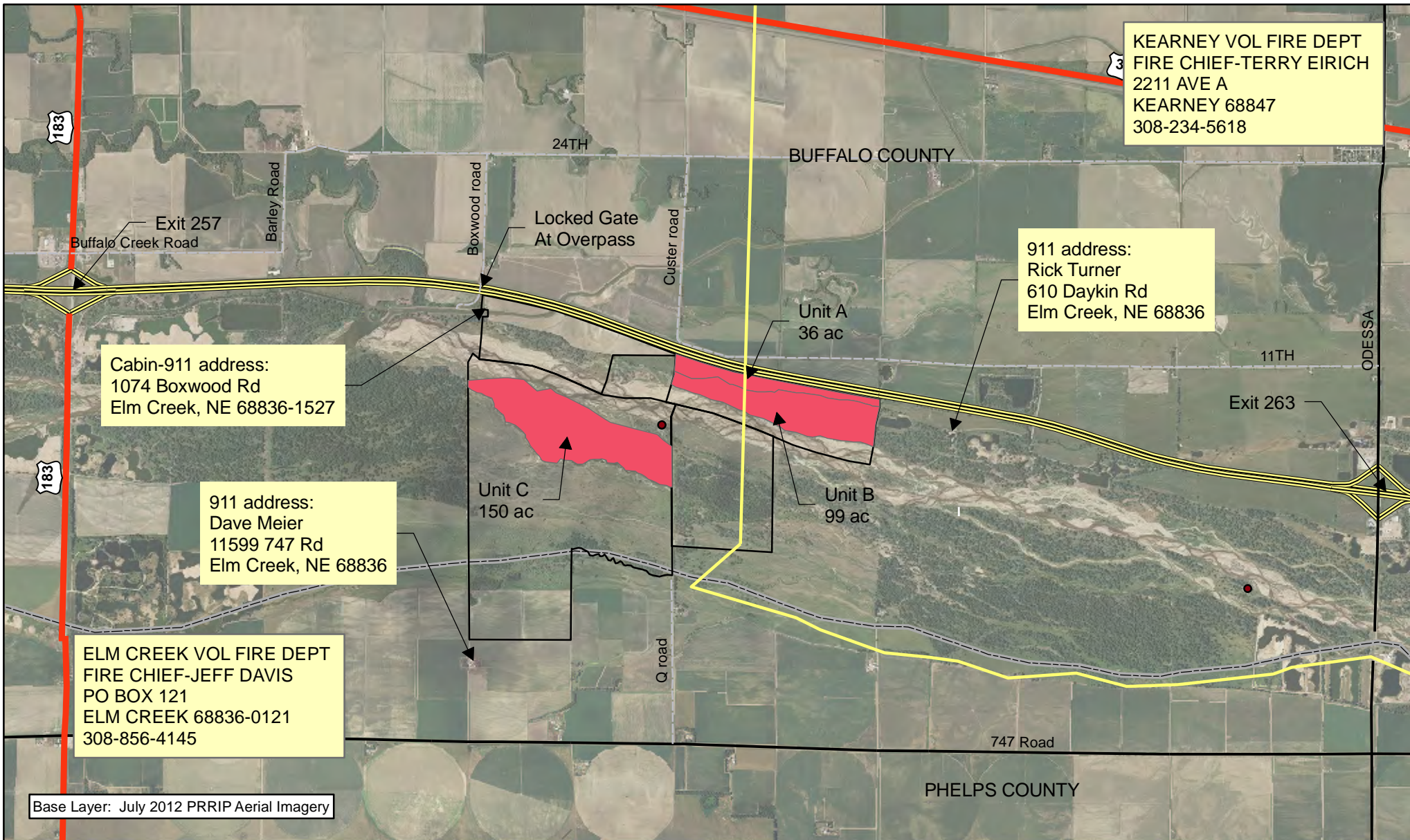
- Property Boundary
- County
- Central\_Platte\_Fire\_Districts
- Transmission Line
- 2013



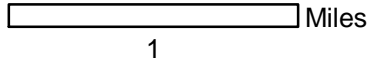
COTTONWOOD RANCH COMPLEX  
FY 2013  
SPRING  
BURN UNITS  
Date: 1/18/2013  
By: TRT

Figure 3





- Legend**
- Property Boundary
  - County
  - Central\_Platte\_Fire\_Districts
  - 2013
  - Bald Eagle Nest



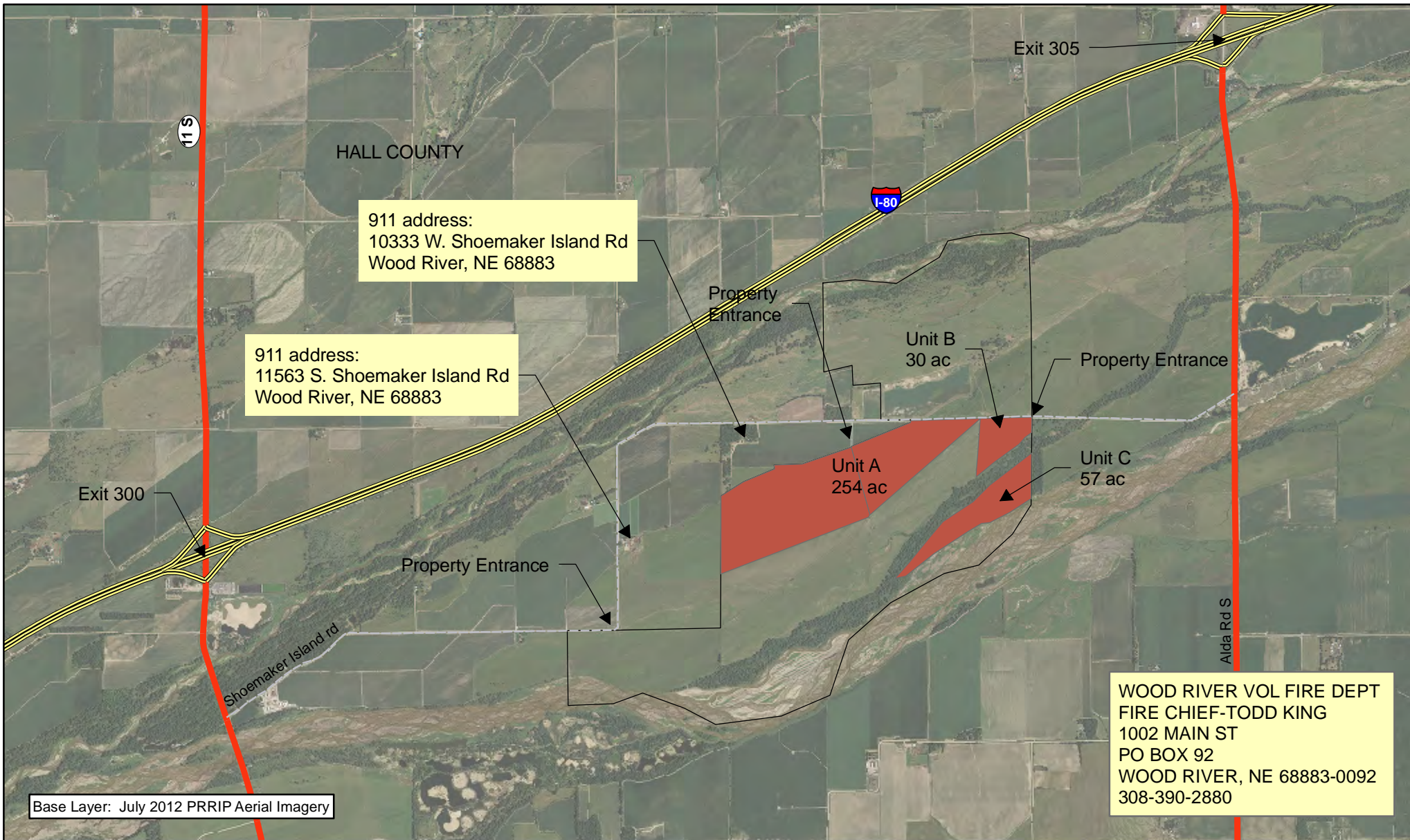
**ELM CREEK COMPLEX**  
 FY 2013  
 SPRING  
 BURN UNITS  
 Date: 1/18/2013  
 By: TRT

Figure 4









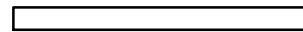
**Legend**

**Property Boundary**



 2013



 Miles

1

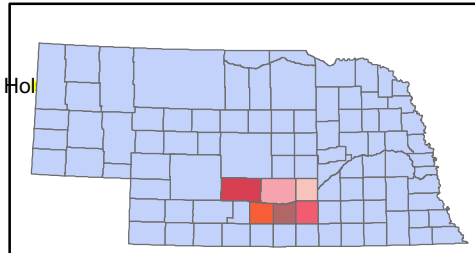
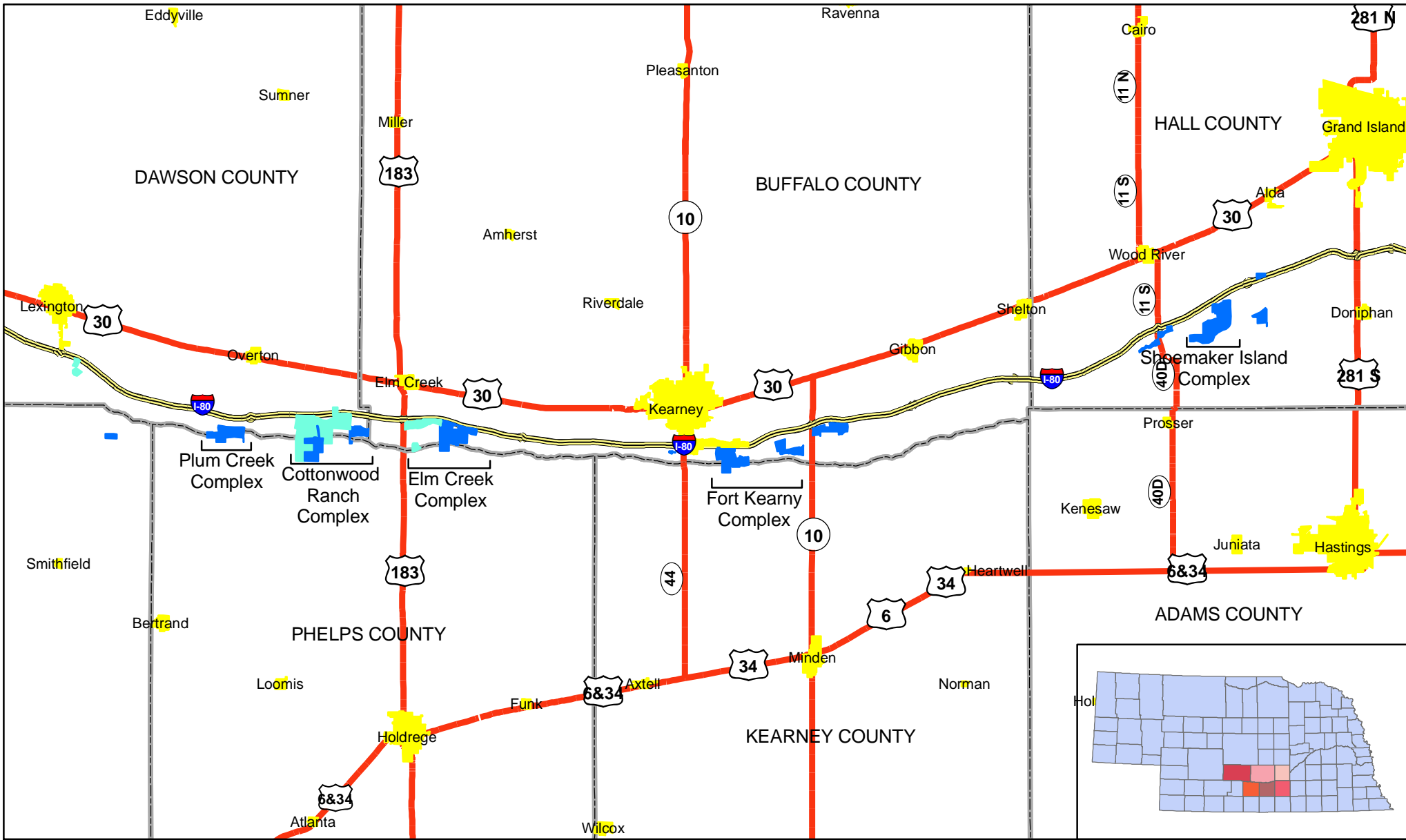
**SHOEMAKER ISLAND  
COMPLEX  
FY 2013  
SPRING  
BURN UNITS**

Date: 1/18/2013

By: TRT

Figure 6





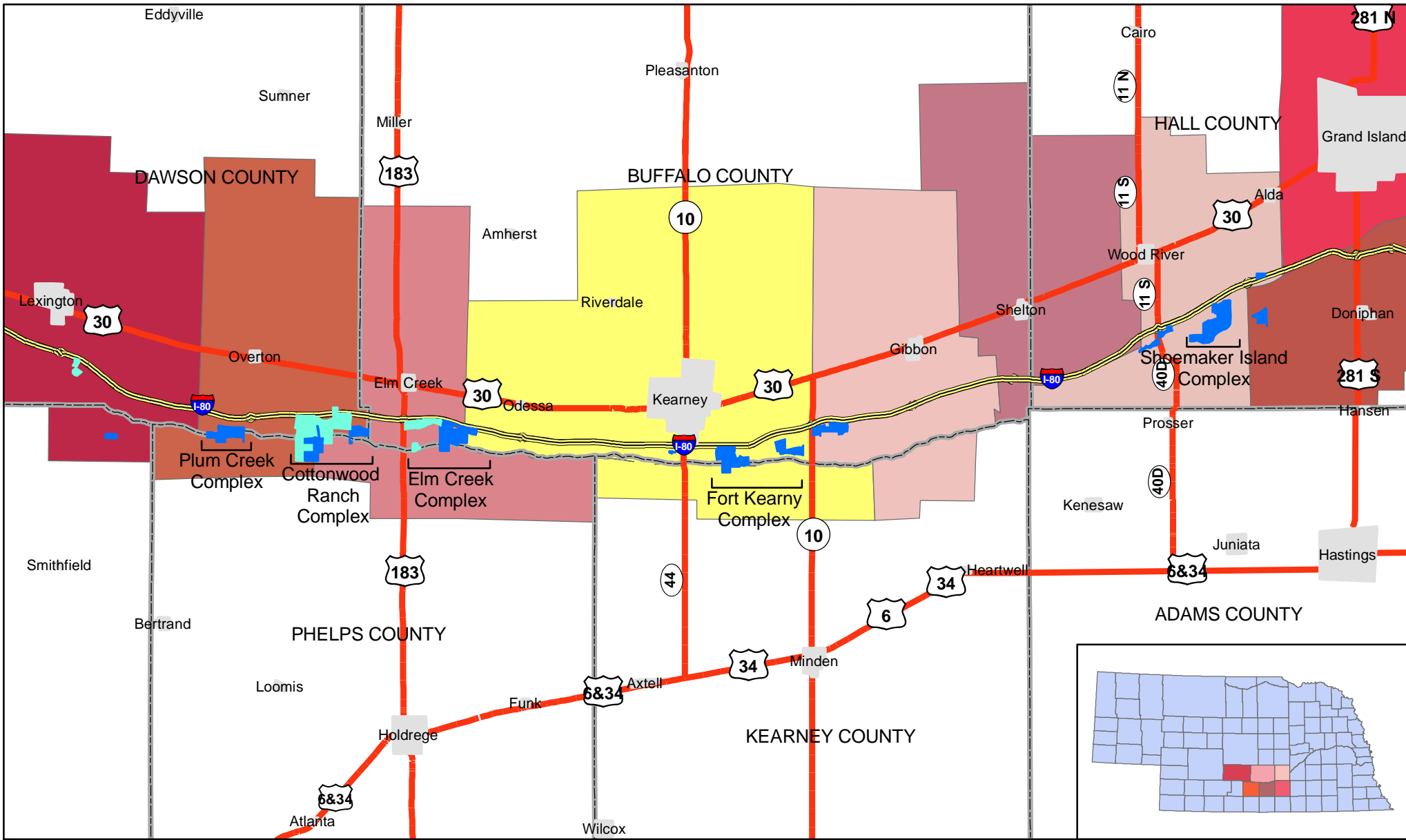
**Legend**  
**Property Boundary**  
**OWNERSHIP**  
 ■ PRRIP  
 ■ NPPD



10 Miles

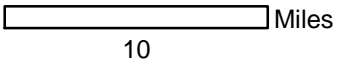
**COMMUNITIES AT RISK**  
 FY 2013  
 SPRING  
 BURN UNITS  
 Date: 1/18/2013  
 By: TRT

Figure 7



**Legend**

- LEXINGTON VOL FIRE DEPT
- OVERTON VOL FIRE DEPT
- ELM CREEK VOL FIRE DEPT
- KEARNEY VOL FIRE DEPT
- GIBBON VOL FIRE DEPT & RESCUE SQUAD
- SHELTON VOL FIRE & RESCUE
- WOOD RIVER VOL FIRE DEPT
- DONIPHAN VOLUNTEER FIRE DEPT
- GRAND ISLAND RURAL FIRE DEPT



**CENTRAL PLATTE  
FIRE DISTRICTS  
FY 2013  
SPRING BURN UNITS**

Date: 1/18/2013  
By: TRT

Figure 8



650 **APPENDIX - A**  
651 **PLATTE RIVER RECOVERY IMPLEMENTATION PROGRAM**  
652 **PRESCRIBED FIRE STANDARDS**

653  
654 **INTRODUCTION**

655 These Standards are designed to define procedures to be used by personnel involved in the planning,  
656 reviewing, approving and implementing of prescribed fire on Platte River Recovery Implementation  
657 Program (PRRIP) property.

658  
659 **GUIDELINES**

660 **1. Prescribed Fire Implementation**

661  
662 Prescribed fires on PRRIP lands are required to be conducted in compliance with Nebraska Statutes  
663 subsection 81-520.01 and 81-520-02 and any other applicable laws.

664  
665 Fireline installation and plowing will follow guidelines identified in the PRRIP Fireline Standards  
666 document (Appendix B).

667  
668 By 5:00 PM one day prior to ignition or by 8:30 AM the day of the burn, the Burn Manager responsible  
669 for conducting the burn will notify the PRRIP Land Manager by *e-mail* indicating the location of the burn  
670 area (Section, Township, Range), the tract name, the county where the burn will be conducted, and the  
671 approximate acreage planned. The Land Specialist and the PRRIP Receptionist will also be copied on this  
672 e-mail. In the event of an escaped prescribed fire, contractors should initiate suppression actions, contact  
673 local fire chief with jurisdiction over the area, and then notify the PRRIP Land Manager or the Land  
674 Specialist. If the escape impacts private property, the landowner should be contacted by the Land  
675 Specialist. The Burn Manager responsible for conducting the burn should document the results of the  
676 escape using photos, GPS, maps, and a written narrative describing the incident including any adverse  
677 results; any involvement from local fire department with jurisdiction over the area to contain the escape  
678 should also be documented. Written communication outlining the general details of the incident should be  
679 sent to the PRRIP Land Manager within 48 hours. A full report documenting the all the above  
680 information should be submitted within one week following the incident.

681  
682 **2. Prescribed Burn Manager Requirements**

683  
684 All prescribed fires on PRRIP land will be managed by a NWCG Certified Prescribed Burn Boss as  
685 defined in the Wildland Fire and Prescribed Fire Qualification System Guide published by the National  
686 Wildfire Coordinating Group (NWCG), Publication Numbers PMS 310-1 and NFES 1414 (January 2009)  
687 and shall have detailed functional knowledge and specialized experience with prescribed burning in  
688 grassland fuels. The certified Burn Manager must be present on site at all times during burn operations.  
689 An updated copy of the Burn Manager's current certification status card must be provided to Land  
690 Manager prior to ignition. All required personnel, equipment, firebreaks and permits as established by law  
691 must also be accounted for prior to ignition.

692 **3. Training/Safety Criteria**

693  
694 Due to the inherent dangers of working with fire, minimum requirements must be implemented to ensure  
695 that personnel are adequately trained and equipped to participate in a prescribed fire. These minimum



696 requirements apply to all participants involved in prescribed fire on PRRIP lands including PRRIP  
697 personnel, burn contractors, cooperators from other agencies and students. The Contractor shall ensure  
698 that all of his personnel are qualified to perform the duties of ignition, holding, patrol and mop-up as  
699 defined in the Wildland Fire and Prescribed Fire Qualification System Guide published by NWCG,  
700 Publication Numbers PMS 310-1 and NFES 1414 (January 2009).

701

702 Personal Protection Equipment:

703 The Contractor shall ensure that all crew members arrive at the work site with required personal  
704 protective clothing and equipment, including: a serviceable National Fire Protection Association (NFPA)  
705 approved fire shelter; a NFPA approved hardhat; eye protection; hearing protection; NFPA approved  
706 flame resistant shirt and pants; NFPA approved leather gloves; and heavy-duty, leather, laced boots with  
707 non-skid soles and tops at least eight inches high. The Contractor shall ensure the personal protective  
708 clothing and equipment is operable and maintained in good repair. All personnel shall wear personal  
709 protective clothing and equipment during all burning and mop-up operations. All personnel on a burn site  
710 must have two-way radio communications with the burn manager and required suppression equipment.  
711 Contractors are also encouraged to obtain radios that are programmable.

712

#### 713 4. Prescribed Burn Purpose/Objectives

714

715 The burn purpose and objective for each prescribed burn will be determined by PRRIP staff. This  
716 information will be conveyed to contractors before the burn is implemented to help with burn plan  
717 development. In general, the burn purpose will describe an overall goal such as site preparation or hazard  
718 reduction and the burn objective will identify a specific, measurable, parameter such as remove 75% of  
719 available fuels. Prior to the burn, Burn Managers will evaluate the site to determine the type of ignition  
720 methods, firing techniques and weather conditions needed to meet the pre-determined objective, safely  
721 conduct the burn, and minimize negative effects such as duff ignition/soil damage, crown scorch, or  
722 smoke management problems. This information will be included in the burn plan.

723

#### 724 5. Prescribed Burn Plans

725

726 Burn plans will be written on a NWCG approved burn form or an alternative form approved by the  
727 PRRIP Land Manager. Fully completed, legible, burn plans will be delivered to the PRRIP Land Manager  
728 within one week following the completion of the burn. These plans must be signed by the Burn Manager.  
729 Burn Managers will follow the PRRIP's Weather Parameter Standards (Appendix–A) when planning and  
730 implementing prescribed burns. Fire weather forecasts for the appropriate county containing the burn site  
731 will be used the day of the burn. These are available from the following National  
732 Weather Service online sources:

733

734 Hastings:

735 <http://www.srh.noaa.gov/jax/text.php?sid=JAX&pil=FWF>

736

737 North Platte:

738 <http://www.srh.noaa.gov/productview.php?pil=TAEFWFTA&version=0>

739

740 **A copy of these forecasts must accompany the burn plan when**  
741 **submitted to the PRRIP.**

742



743 The PRRIP requires that contractors keep good records of all pre-burn planning and site evaluation  
 744 measures as well as actual firing techniques used during prescribed burn implementation. This will  
 745 include full documentation of information such as: burn purpose and objective, Forecasted and actual  
 746 weather conditions, soil moisture conditions (including soil saturation and depth to water in wetlands), the  
 747 location of heavy duff layers, days since rain, and amount of rain received on the actual burn block,  
 748 Keetch-Byram drought index (KBDI), etc. This information should be included in the burn plan or as an  
 749 attachment. A copy of the burn plan and a site map showing burn area location, firelines, roads, and  
 750 natural features shall be in the possession of the burn manager at the time of the burn. PRRIP staff will  
 751 provide burn managers with a map and/or ground location point of any areas personnel should avoid.  
 752 PRRIP staff may ask personnel to avoid disking, plowing or igniting fires in these areas. These sites may  
 753 contain historical resources, threatened and endangered plant or animal locations, public use facilities or  
 754 exotic plant infestations. Contractors will notify the PRRIP’s Land Manager within 24 hours if the  
 755 following circumstances occur after the burn has been completed: 1) fire has escaped, 2) burn objectives  
 756 were not met or 3) negative publicity or smoke management problems occurred.

757  
 758 **6. GIS Requirements**

759  
 760 Contractors must submit a shapefile showing acres burned with each invoice. To receive payment, the  
 761 acreage identified in shapefile must be identical to the acreage listed on the invoice to the nearest 1/10  
 762 acre. PRRIP staff will field verify and make payment based on this acreage. Shapefiles will be projected  
 763 to: NAD 1983 Nebraska State Plane Feet.  
 764

765 **WEATHER PARAMETER STANDARDS**

Relative Humidity	<ul style="list-style-type: none"> <li>• &gt; or = 25%</li> </ul>
Fine Dead Fuel Moisture	<ul style="list-style-type: none"> <li>• 6% Minimum</li> <li>• Based on predicted fine fuel moisture (from tables) or direct measurement</li> </ul>
Wind Speed	<ul style="list-style-type: none"> <li>• Maximum mid-flame wind speed is 15 mph</li> <li>• Maximum forecast 20 ft wind speed is 18 mph</li> </ul>
Category Day	<ul style="list-style-type: none"> <li>• Category II in rural areas unaffected by smoke</li> <li>• Category III when there are smoke sensitive areas downwind</li> </ul>
KBDI	<ul style="list-style-type: none"> <li>• = or &lt; 400</li> </ul>
Palmer Drought Index	<ul style="list-style-type: none"> <li>• At least -1</li> </ul>
Temperature	<ul style="list-style-type: none"> <li>• 90°F Maximum.</li> </ul>
Smoke Management	<ul style="list-style-type: none"> <li>• 9 mph Minimum transport wind speed</li> <li>• 2,000 ft Minimum Mixing Height</li> </ul>

766  
 767



**APPENDIX – B**  
**PLATTE RIVER RECOVERY IMPLEMENTATION PROGRAM**  
**FIRELINE STANDARDS**

768  
769  
770  
771  
772  
773  
774  
775  
776  
777  
778  
779  
780  
781  
782  
783  
784  
785  
786  
787  
788  
789  
790  
791  
792  
793  
794  
795  
796  
797  
798  
799  
800  
801  
802  
803  
804  
805  
806  
807  
808  
809  
810  
811  
812  
813  
814  
815

**INTRODUCTION:**

These Standards are designed to be used by contractors, cooperators and Platte River Recovery Implementation Program (PRRIP) employees in the planning, reviewing, approving and construction of firelines.

**GUIDELINES:**

A prescribed burn will not be conducted without adequate firebreaks surrounding the burn plot. The installation and maintenance of firelines along PRRIP ownership boundaries and main public use roads is primary while minimizing interior lines whenever possible. Natural and artificial firebreaks should be utilized before installing new lines. This will help minimize soil erosion, hydrologic alterations, and impacts on natural plant communities and historic or prehistoric resources. Types of natural firebreaks include: rivers, lakes, streams, wetlands, etc. Artificial firebreaks are existing disturbances, facilities or cleared areas that may include: firelines, roads, ditches, trails, utility easements, blacklines and foam.

PRRIP personnel must approve the establishment of new firelines prior to construction. This approval will consider justification of need and route of firelines. Consideration will be given to the effect of the proposed fireline route on hydrology. Fireline routes will also be assessed for threatened and endangered species, archeological sites, public access facilities and exotic plants to avoid disturbing or spreading these. The addition of new firelines should be considered only if necessary for accomplishing safe prescribed burning. When possible, firelines should be coupled with other types of firebreaks (natural/artificial) to minimize ground disturbance.

Prescribed fires that escape or become out-of-prescription are often subject to emergency plowing. On PRRIP land, the preferred method for controlling such a fire is with a brush truck or other water delivery vehicle or to let the fire burn to the nearest firebreak. If these methods cannot be safely and effectively implemented, a tractor and fire plow should be used for suppression purposes.

**PROCEDURES:**

**Fireline Installation and Maintenance:**

- a) Fireline installation should not adversely impact listed plant or animal species, archeological resources, public use facilities such as bike or hiking trails, or enable the spread of exotic plant infestations. PRRIP staff will provide maps and/or ground location points of any areas to be avoided. These sites may contain historical resources, threatened and endangered plant or animal locations, public use facilities or exotic plant infestations.
  
- b) The PRRIP requires that all fireline installation and maintenance work produce a flat line that does not contain berms that may block or channel water flow. Root mats or heavy vegetation should be spread out within the block to avoid fuel build-up along the edges. The PRRIP prefers that firelines be reworked and maintained using



- 816 a heavy duty (forestry) harrow. Firelines installed with a dozer blade  
817 or fire plow will be reworked to yield a flat line. The use of a fireplow  
818 or dozer blade to install a fireline must be approved by the PRRIP  
819 Land Manager.
- 820
- 821 c) If a fire plow is used to install a fireline, or control an escaped or  
822 out of prescription fire, the burn contractor must rework the plowed  
823 lines before demobilizing from site.
- 824
- 825 d) If a fireplow is used to control an escaped or out of prescription  
826 fire, plow depth should be no greater than required to expose  
827 mineral soil and stop the fire. A map of existing firebreaks, roads,  
828 natural features and avoidance areas should be in the possession of  
829 the plow operator and crew members at all times.
- 830
- 831 e) Firelines will not be constructed so that they create new travel  
832 corridors or paths through or around areas that are cabled, gated, or  
833 fenced. If a fire line is being installed along a public use road, disking  
834 must be off to one side of the road, but not in the ditch, to allow  
835 vehicles to continue to use the road.
- 836
- 837 f) Firelines should follow the contour of the land when possible, to  
838 avoid downslope erosion. Lines should be stabilized if subject to  
839 water flow by the use of water bars or turnouts.
- 840 g) Plow and harrow depth should be kept at the minimum possible at  
841 all times.
- 842
- 843 h) Width of exposed mineral soil should be 6 to 8 feet for interior  
844 lines after reworking.
- 845
- 846 i) Perimeter lines are critical to ensure that fires do not leave PRRIP  
847 lands and impact private property. They should be wider than interior  
848 lines and should be cleared 12 to 16 feet of trees and overhanging  
849 vegetation. Wider lines may be required because of adjacent  
850 property with heavy fuels or residential structures. Width of exposed  
851 soil should be 8 to 10 feet and the line must be reworked if newly  
852 plowed.
- 853
- 854 j) Wetlands should be avoided when installing firelines. A line  
855 running up to a wetland incorporating it as a fire break is the best  
856 method providing it does not act as a drain to channel water out of,  
857 or cause erosion into the wetland. Wetlands should be burned when  
858 it is possible to mimic the historical fire frequency and when it can be  
859 done without risk of an organic peat layer (duff) fire.
- 860
- 861 k) When connecting firelines to wetlands and other hydrologic  
862 features such as intermittent/perennial streams, rivers, lakes,  
863 sinkholes, etc., firelines should stop a minimum of 75 feet from the



864 edge of these features. A wetline or handline can be used to tie in  
865 the remaining distance.

866  
867 l) Firelines should not follow the edge of a natural plant community  
868 because it may disturb the ecotone and destroy rare plants that  
869 often occupy this zone.

870  
871 m) Primary firelines such as tract boundaries should be maintained  
872 at least once a year by disking if needed. Adjacent areas may  
873 require mowing. When possible, fireline maintenance should occur  
874 during early growing season.

875  
876





**APPENDIX –C**  
**PLATTE RIVER RECOVERY IMPLEMENTATION PROGRAM**  
**PLUM CREEK LODGE ACCOMODATIONS**

The lodge is approximately 2,000 square feet located on Tract 2009003 which is located in the Plum Creek Complex (Figure 1). The lodge has 3 lower level bedrooms each with its own bathroom with shower (Figures 2-4) and 2 upper level bedrooms (Figure 5-7). The living and kitchen area are fully furnished (Figures 8-9). The lodge is furnished with central heat and air, washer and dryer, electric stove and oven, and 2 full size refrigerators.



Figure 1-Plum Creek Lodge



20  
21

Figure 2- Lower level bedroom 1



22

23

Figure 3- Lower level bedroom 2



24

25 Figure 4- Lower level bedroom 3



26

27 Figure 5- Upper level loft





28

29 Figure 6- Upper level bedroom 1



30

31 Figure 7- Upper level bedroom 2



32

33 Figure 8- Kitchen



34

35 Figure 9- Living area