



REQUEST FOR PROPOSALS (RFP)

Spring 2015 Prescribed Fire Management Services

PLATTE RIVER RECOVERY IMPLEMENTATION PROGRAM

Office of the Executive Director
4111 4th Avenue, Suite 6
Kearney, Nebraska 68845

January 22, 2015



Contents

I. OVERVIEW 3

II. PROJECT DESCRIPTION & SCOPE OF WORK 3

III. PROJECT BUDGET 10

IV. FIELD AND OFFICE EQUIPMENT 10

V. CONTRACT TERMS 10

VI. SUBMISSION REQUIREMENTS 11

VII. PROPOSAL RESPONSE FORMS 13

Appendix A – PRRIP Prescribed Fire Standards

Appendix B – PRRIP Fireline Standards



1 **PLATTE RIVER RECOVERY IMPLEMENTATION PROGRAM**
2 **REQUEST FOR PROPOSALS (RFP)**

3
4 **SUBJECT:** Spring 2015 Prescribed Fire Management Services
5 **REQUEST DATE:** January 23, 2015
6 **PRE-PROPOSAL MEETING:** February 4, 2015
7 **CLOSING DATE:** February 20, 2015
8 **POINT OF CONTACT:** Tim Tunnell, Land Manager
9 Headwaters Corporation
10 (402) 219-3883
11 tunnellt@headwaterscorp.com
12

13 **I. OVERVIEW**

14 The Platte River Recovery Implementation Program (“Program” or “PRRIP”) was initiated on January 1,
15 2007 between Nebraska, Wyoming, Colorado, and the Department of the Interior to address threatened
16 and endangered species issues in the central and lower Platte River basin. The species considered in the
17 Program, referred to as “target species”, are the whooping crane, piping plover, interior least tern, and
18 pallid sturgeon.

19
20 A Governance Committee (GC) reviews, directs, and provides oversight for Program activities. The GC
21 is comprised of one representative from each of the three states, three water user representatives, two
22 representatives from environmental groups, and two members representing federal agencies. The GC has
23 named Dr. Jerry Kenny to serve as the Program Executive Director (ED). Dr. Kenny established
24 Headwaters Corporation as the staffing mechanism for the Program. Program staff are located in
25 Nebraska and Colorado and are responsible for assisting in carrying out Program-related activities.

26
27 One of the major components of Program implementation is acquisition and management of 10,000 acres of
28 habitat for the benefit of the target species. To date, approximately 10,500 acres have been acquired and
29 are being managed by the Executive Director’s Office (EDO). Prescribed fire is an important tool used by
30 the Program to manage grassland composition and structure. To date, the program has relied on strategic
31 partnerships with local agencies and conservation organizations to implement prescribed fire. However,
32 as Program land ownership has increased, prescribed fire needs have surpassed local capacity. **As such,**
33 **the GC is requesting proposals from National Wildfire Coordinating Group (NWCG) qualified**
34 **contractors for spring 2015 prescribed fire management services to be performed starting April 1,**
35 **2015.**

36
37 **II. PROJECT DESCRIPTION & SCOPE OF WORK**

38 **Project Description**

39 The Program is requesting proposals for prescribed fire management services during the spring of 2015.
40 The performance period will begin on April 1 and will end on May 31. The Contractor will be responsible
41 for lodging and all labor, materials, equipment, tools, transportation and supplies required to complete the
42 work. Fire management services will include, but are not limited to, prescribed fire planning and
43 implementation, fire-line preparation, post burn mop-up and monitoring, and if needed wildfire
44 suppression. Contractors must be able to provide their own equipment.



45 Contractors must also be available respond to any issues that may arise after the contractor's prescribed
46 burn is complete. These issues could include: smoke management problems, mop-up concerns, post-burn
47 monitoring needs or escapes. This response must occur during the same day of contact by the Rural Fire
48 Protection Districts local fire chief with jurisdiction over the burn unit or EDO staff and must include the
49 appropriate personnel, equipment or contingency measures.

50

51 The PRRIP is requesting that the contractor be available during the eight (8) week period to fully utilize
52 weather windows that meet prescriptions for each of the five (5) habitat complexes.

53

54 **Scope of Work**

55 Habitat Complexes

56 Program lands are organized into approximately 2,000 to 3,000 acre blocks referred to as habitat
57 complexes. There are five habitat complex distributed across the project area, containing the majority of
58 land to be burned on an annual basis (**Figure-1**). The following description generally applies to areas that
59 will be burned:

- 60 • Most burn blocks on these tracts have been burned once over the last five to ten years; stand types
61 are primarily lowland, tall grass prairie that have been heavily invaded with introduced cool-
62 season grasses and often include natural riparian forest;
- 63 • most burn units have been grazed and/or hayed;

64

65 The following sections of the scope of work provide specific information about the burn units within each
66 habitat complex.

67

68 Plum Creek Complex

69 Contractors should be aware of the following points:

70

71 1. Plum Creek Complex is located less than 1 mile to the south of Interstate 80 between the towns of
72 Lexington and Overton, NE.

73

74 2. Plum Creek complex contains 2 tracts of land and is 2 miles long with the majority of the land located
75 on the south side of the Platte river; mostly grassland fuels; There are 2 burn units (labeled A & B) and is
76 approximately 233 acres and can be divided into smaller areas (**Figure-2**).

77

78 3. All trees have been removed from the east mile of the complex and ~30 acres of cropland has been
79 reseeded back to native grass. The west end of the complex is a native hay meadow with the majority of
80 the tract remaining in cropland. There is a ground water drain that traverses the west tract towards the
81 east side. This drain is ~20 feet deep and extends to the river. There is a wooden bridge that crosses the
82 drain. There is a lodge located at the southern end of the sandpits towards the east end of the unit. The
83 northern fire-line will be the Platte River; the southern fire line will be a mowed two-track road, crop
84 stubble field, and alfalfa field. The east and west fire-lines will be mowed lines along property boundary.

85

86 4. Fire-lines are often limited to roads, ditches, mowed/hayed lines and river/ slough edges; contractors
87 should be comfortable burning from these features; additional fire-line establishment can be conducted
88 but must be authorized by the PRRIP Land Manager.

89

90



91 Cottonwood Ranch Complex

92 Contractors should be aware of the following points:

93
94 1. Cottonwood Ranch Complex is located less than 1 mile to the south of Interstate 80 between the towns
95 of Overton and Elm Creek, NE.

96
97 2. Cottonwood Ranch complex contains 3 tracts of land and is 4 miles long with the majority of the land
98 located on the south side of the main channel of the Platte river; mostly grassland fuels; There are three
99 burn units (labeled A-C) and is approximately 396 acres and can be divided into smaller areas (**Figure-3**).

100
101 3. **Units A and B** are located south of the Platte River and are predominately lowland tall grass prairie
102 heavily infested with tall wheatgrass. Grazing was not deferred on this unit during the 2014 grazing
103 season. The primary firebreak is a 20-30 ft mowed line around the inside perimeter of both burn units.
104 There are manmade and natural wetland features on Unit B. **Unit C** is located directly southeast of Unit
105 B. The tract is hay meadow and restored cropland that was broadcast seeded in the winter of 2011.
106 Grazing/ haying on this unit was deferred during 2014. The primary firebreak around the perimeter of the
107 unit is a 20-30ft mowed line. The secondary firebreak on the north is a hay meadow, a gravel road on the
108 west, blacktop on the south, and a hayed grassland to the east.

109
110 4. Fire-lines are often limited to roads, ditches, mowed/hayed lines and river/ slough edges; contractors
111 should be comfortable burning from these features; additional fire-line establishment can be conducted
112 but must be authorized by the PRRIP Land Manager.

113
114 Elm Creek Complex

115 Contractors should be aware of the following points:

116
117 1. Elm Creek Complex is located less than 1/4 mile to the south of Interstate 80 between the towns of Elm
118 Creek and Odessa, NE.

119
120 2. Elm Creek complex contains 4 tracts of land and is 2 miles long with two tracts being located on the
121 north side of the Platte river and the other located on the south side of the Platte river. There are 4 burn
122 units (labeled A-D) and is approximately 388 acres that can be divided into smaller areas (**Figure-4**).

123
124 3. **Units A and B** are located between Interstate 80 and the north channel of the Platte River. **Unit A** is a
125 native hay meadow (36 acre) and **Unit B** is predominately riparian forrest (149 acres). The primary
126 firebreak on the north is a 20-30ft mowed line and the secondary firebreak is Interstate 80. Trees have
127 been cleared back approximately 60' on the east and west side on the two units. There is an 115Kv
128 transmission line that extends the length of the tract on the north boundary of Unit B. There is a state
129 owned wildlife management area on the west. **Unit C** is 61 acres located within a ~380 acre pasture. Unit
130 C has undergone extensive tree clearing over the past 30+ years and construction of wetland features in
131 the past 5 years. The unit is predominatly tallgrass prairie and has a history of moderate grazing. The
132 north boundary is a constructed wetled slough and the east and west boundary is a 20-30 ft mowed line.
133 The secondary northern firebreak is the main channel of the Platte River. The west property outside of the
134 boundary is privately owned, and the south boundary is a 20-30 ft mowed line or a two track road. **Unit D**
135 is 182 acres and is predominatly tallgrass prairie with a history of moderate grazing. The unit has
136 undergone aboveground tree removal in 2012. Cut trees were piled and burned and buried. The burn unit
137 will be secured by mowed lines on the north and east. The east control line will be a mowed line and a
138 closed county road. The southern control line will be the south channel of the Platte River. Unit E is 45



139 acres and has undergone tree clearing in 2010 and was reseed to native grass in 2011. The north boundary
140 is the main channel of the Platte River, the south boundary is a secondary channel of the Platte River, east
141 and west boundaries are mowed lines. There is an active bald eagle nest in a group of trees located to the
142 west of Unit E. Care must be taken to avoid allowing fire to escape to this area.

143

144 4. Fire-lines are often limited to roads, ditches, mowed/hayed lines and river/ slough edges; contractors
145 should be comfortable burning from these features; additional fire-line establishment can be conducted
146 but must be authorized by the PRRIP Land Manager.

147

148 Fort Kearny Complex

149 Contractors should be aware of the following points:

150

151 1. The Fort Kearny Complex is located less than 1/4 mile to the south of Interstate 80 and is located
152 between 2 channels of the Platte River near the town of Kearney, NE and Highway 10.

153

154 2. The Fort Kearny complex contains 3 tracts of land and is 5 miles long. There are 4 burn units (labeled
155 A-D) and is approximately 416 acres and can be divided into smaller areas (**Figure-5**).

156

157 3. **Unit A** is located between Interstate 80 and the north channel of the Platte River and is predominately
158 open grassland with a mature shelterbelt along the northern edge of the unit. The primary firebreak on the
159 north, south and west is a 20-30 ft mowed line and on the east is a 2 track road that extends the length of
160 the unit and crop field (planted to corn in 2014). The secondary firebreak to the north is a gravel road
161 between the unit and Interstate 80. The secondary firebreak to the south is a 2 track road on the south side
162 of the fence between the unit and the north channel of the Platte River. **Unit B** is located between
163 Interstate 80 and the north channel of the Platte River and is predominately open grassland with scattered
164 cottonwood trees along the northern edge of the unit. Most understory trees have been removed and there
165 has been grazing on the unit in 2014. The primary firebreak on the north is a 2 track road that extends the
166 length of the unit and crop field (planted to corn in 2014). The secondary firebreak is Interstate 80. A
167 hand line will be required on the east and west boundaries. There is a dike consisting of concrete rubble
168 along the east boundary on the adjacent property. The firebreak on the south is the main channel of the
169 Platte River. **Unit C** is an open wet meadow heavily infested with intermediate wheatgrass. The unit has
170 been heavily grazed since 2009. The west and south sides of the unit are privately owned cropfield, the
171 east side is wet meadow heavily infested with intermediate wheatgrass and eastern red cedar. The primary
172 firebreak around the inside perimeter of the burn unit is a 20-30 ft mowed line. **Unit D** is located between
173 the main channel of the Platte River and a gravel county road. The unit was previously cropfield and was
174 broadcast sown with native grass in winter of 2011. The unit was deferred from grazing/ haying in 2014.
175 The primary firebreak on the north is a gravel county road, on the south is the Platte River, on the east is
176 privately owned cropfield, and the west is a mowed line. There are two privately owned residence at the
177 NE corner of the unit and one at the SW corner of the unit.

178

179 4. Fire-lines are often limited to roads, ditches, mowed/hayed lines and river/ slough edges; contractors
180 should be comfortable burning from these features; additional fire-line establishment can be conducted
181 but must be authorized by the PRRIP Land Manager.

182

183 Shoemaker Island Complex

184 Contractors should be aware of the following points:

185



- 186 1. Shoemaker Island Complex is located less than 1/2 mile to the south of Interstate 80 between 2
187 channels of the Platte River near the towns of Wood River and Alda, NE.
188
- 189 2. Shoemaker Island complex contains 1 tract of land and is 3 miles long; There are 4 burn units (labeled
190 A-D) and is approximately 465 acres and can be divided into smaller areas (**Figure-6**).
191
- 192 3. Unit A is a hay meadow that was hayed in early August of 2014. The north firebreak is a gravel county
193 road on the west and a two track on the east and Platte River on the south. Mowed lines will be used on
194 the east and west. **Unit B** is grazed and was not deferred in 2014. The south, east, and west boundaries
195 will be mowed lines and the north boundary is cropfield and gravel county road. **Unit C** is a hayed
196 meadow. The south, east, and west boundaries will be mowed lines and the north boundary is a gravel
197 county road. **Unit D** is a native grassland that was moderately grazed in 2014. The north and east
198 firebreak is a two track road and the south firebreak is the Platte River. The are two residence to the north
199 of Unit A and one north of the northwest corner of Unit B.
200
- 201 4. Fire-lines are often limited to roads, ditches, mowed/hayed lines and river/ slough edges; contractors
202 should be comfortable burning from these features; additional fire-line establishment can be conducted
203 but must be authorized by the PRRIP Land Manager.
204

205 Smoke Sensitive Areas:

206 The tracts are primarily located in rural landscape with scattered farmsteads however they are near
207 interstates, major highway(s) and/or populated areas.
208

209 Communities at Risk:

210 Nine communities exist within the PRRIP project area: Lexington-Grand Island (**Figure-7**). Their
211 proximity to PRRIP properties makes them vulnerable to smoke and other hazards related to wildfire and
212 prescribed burning. Additional outlying communities that may also be affected by smoke include
213 Bertrand, Loomis, Holdrege, Funk, Axtell, Minden, Heartwell, Kenesaw, Juniata, Hastings, Doniphan,
214 Cairo, Riverdale, Amherst, and Miller (**Figure-7**).
215

216 Wildfire Suppression and Escaped Prescribed Fires:

217 In the event of an escaped prescribed fire originally ignited by the contractor, contractors may be
218 responsible for coordinating with and working under the direction of the Rural Fire Protection Districts
219 local fire chief with jurisdiction with over the area on containment, mop-up and monitoring issues until fire is
220 called out by the appropriate agency (**Figure-8**). During this process contractors may be responsible for
221 paying suppression costs charged for fire suppression and may be required to conduct work or provide
222 assistance without compensation by the PRRIP.
223

224

225 Long-Term Mop-Up, Smoke Mangement, and Re-Burn Situations:

226 Compliance with smoke management guidelines are voluntary in Nebraska, however, the Contractor shall
227 make every effort to meet them. All prescribed fire plans shall address smoke management as a primary
228 issue and prescription parameter. Contractors may be required to conduct long-term mop-up, monitoring
229 and smoke management procedures without compensation. This may occur if PRRIP personnel determine
230 a lack of due diligence and planning occurred before ignition began or if proper procedures were not
231 taken to mop-up and secure fire after ignition was completed.
232

233



234 Submittals:

235 *Prescribed Burn Plans* - Burn plans must be developed by a NWCG qualified Rx Burn planner prior to
236 the proposed burn date. Plans will be written on a NWCG approved burn form or an alternative form
237 approved by the PRRIP Land Manager. The prescribed burn plan shall be in accordance with Nebraska
238 Statutes subsection 81-520.01 and 81-520-02. **Fully completed, legible, plans with a copy of the open**
239 **burn permit will be delivered to the PRRIP Land Manager within five business days following the**
240 **completion of each burn.** These plans must be signed by the Burn Manager. Plans can be scanned and e-
241 mailed, faxed or hand delivered. They must include all actual weather data recorded the day of the burn
242 and any other planning notes recorded before or during the burn.

243
244 Burn Managers will follow the PRRIP Weather Parameter Standards (**APPENDIX–A**) when planning
245 and implementing prescribed burns. Fire weather forecasts for the appropriate county containing the burn
246 site will be used the day of the burn. These are available from the following National Weather Service
247 online sources:

- 248
249 Hastings:
250 <http://www.crh.noaa.gov/gid/?n=firewx>
251 North Platte:
252 <http://www.crh.noaa.gov/lbf/forecasts/firewx/firewx.php>
253

254 **A copy of these forecasts must accompany the burn plan when submitted to the PRRIP.**
255

256 The PRRIP requires that contractors keep good records of all pre-burn planning and site evaluation
257 measures as well as actual firing techniques used during prescribed burn implementation. This includes
258 full documentation of information such as: burn purpose and objective, forecasted and actual weather
259 conditions, spot weather forecasts, soil moisture conditions (including soil saturation and depth to water
260 in wetlands), days since rain, amount of rain received on the actual burn block, Keetch-Byram drought
261 index (KBDI), etc. This information should be included in the burn plan or as an attachment.
262

263 The burn purpose and burn objective will be determined by PRRIP staff. This information will be
264 conveyed to contractors before the burn is implemented to help with burn plan development. In general,
265 the burn purpose will describe an overall goal such as site preparation or hazard reduction and the burn
266 objective will identify a specific, measurable, parameter such as remove 75% of available fuels or top-kill
267 50% of trees less than three (3) inches diameter at breast height (DBH).
268

269 Prior to the burn, Burn Managers will evaluate the site to determine the type of ignition methods, firing
270 techniques and weather conditions needed to meet the pre-determined objective, safely conduct the burn,
271 and minimize negative effects such as duff ignition/soil damage, crown scorch, or smoke management
272 problems. This information will be included in the burn plan.
273

274 A copy of the burn plan and a site map showing burn area location, fire-lines, roads, and natural features
275 shall be in the possession of the burn manager at the time of the burn. PRRIP staff will provide burn
276 managers with a map and/or ground location point of any areas personnel should avoid. PRRIP staff may
277 instruct personnel to avoid disking, plowing or igniting fires in these areas. These sites may contain
278 historical resources, threatened and endangered plant or animal locations, public use facilities or exotic
279 plant infestations.
280



281 Contractors will notify the PRRIP's Land Manager as soon as possible but at least within 24 hours if the
282 following circumstances occur after the burn has been completed: 1) fire has escaped, 2) burn objectives
283 were not met or 3) negative conditions or smoke management problems occurred.

284
285 *Prescribed Burn Notification* - By 5:00 PM one day prior to ignition or by 8:30 AM the day of the burn,
286 the Burn Manager responsible for conducting the burn will notify the PRRIP Land Manager by *e-mail*
287 indicating the location of the burn area (Section, Township, Range), the tract name/number, the county
288 where the burn will be conducted, and the approximate acreage planned.

289
290 *Implement Burn Plans* – Prescribed fires on PRRIP lands are required to be conducted in compliance with
291 Nebraska Statutes subsection 81-520.01 and 81-520-02 and any other applicable laws. The Contractor
292 shall monitor all burn units and to determine when a unit is in prescription. All prescribed fires will also
293 be conducted in compliance with all aspects of the PRRIP Prescribed Fire *Standards (APPENDIX-A)*.

294
295 Fireline installation and plowing will follow guidelines identified in the PRRIP Fireline Standards
296 (**APPENDIX-B**).

297
298 *Escaped Prescribed Fires* - In the event of an escaped prescribed fire, contractors shall initiate
299 suppression actions, contact directly affected parties, Rural Fire Protection Districts local fire chief with
300 jurisdiction over the area, and then notify the PRRIP Land Manager or the Land Specialist. In general, the
301 PRRIP Land Manager or Land Specialist will lead all discussion with affected parties. The Burn Manager
302 responsible for conducting the burn should document the conditions of the escape using photos, GPS data,
303 maps, and a written narrative describing the incident including any adverse results and any lessons
304 learned or measures that could be taken in the future to prevent another incident. Any involvement from
305 local fire department with jurisdiction over the area to contain the escape should also be documented.
306 Written or email communication outlining the general details of the incident should be sent to the PRRIP
307 Land Manager within 48 hours. A full report documenting all the above information should be submitted
308 to the PRRIP within one week following the incident.

309
310 *Shapefiles* – Before a burn is conducted, the PRRIP will provide contractors with GIS shapefiles of areas
311 to be burned. After the burn is complete, contractors must submit a shapefile showing the areas that were
312 actually burned. These shapefiles must be included with the each invoice. To receive payment, the
313 acreage identified in shapefiles must be identical to the acreage listed on the invoice to the nearest 1/10
314 acre. Shapefiles will be projected to: NAD 1983 Nebraska State Plane Feet. The PRRIP shall field verify
315 and pay based on this acreage.

316
317 *Equipment Information:*
318 *Minimum Wildland Engine Specifications:* Wildland engines used by contractors on PRRIP burns must
319 meet or exceed all equipment specifications of the National Wildfire Coordinating Group (NWCG) for
320 Type 6 engines, with the added requirements of four-wheel drive (4X4) and foam proportioner. Type 6
321 specifications include: minimum tank size of 150 gallons; a pump rated at 50 gallons per minute (GPM)
322 @ 100 pounds per square inch (PSI); a hose and reel with a minimum of 50' of 1" hose; 300' feet of
323 additional 1" hose; fire hydrant adapters and the ability to draft water.

324
325 On most burns, contractors will have a minimum of one engine and two UTV units on site.

326



327 Contractors are also required to provide all personal protective equipment (PPE) listed in the Program's
328 Prescribed Fire Standard under Training and Safety Requirements (National Wildfire Coordinating Group
329 (NWCG) Standard). (**APPENDIX – A**)

330

331 **III. PROJECT BUDGET**

332 Contractors will submit a mobilization/demobilization cost, administration cost and per-acre cost for
333 prescribed fire services. Contractor compensation will be based on the number of acres burned during the
334 performance period.

335

336

337 **IV. FIELD AND OFFICE EQUIPMENT**

338 Potential Contractors will own or acquire all field and office equipment and software required to provide
339 prescribed fire management services.

340

341 **V. CONTRACT TERMS**

342 The selected Contractor will be retained by: Nebraska Community Foundation
343 PO Box 83107
344 Lincoln, NE 68501

345

346 The Contractor will be subject to (but not limited to) the following contract terms:

347

348 Certification/Training Requirements: See certification and training requirements in Appendix A.

349

350 Insurance Requirements: If awarded, contractor shall represent and guarantee that all employees, agents,
351 servants or representatives of contractor, and all employees, agents, servants, or representatives of
352 subconsultants are covered by workers' compensation insurance as required by Nebraska Statute. Prior to
353 entering into contract with PRRIP, contractor shall furnish PRRIP with certificates of insurance, naming
354 PRRIP as named or additional insured without waiving any defense of sovereign immunity or increasing
355 the limits of PRRIP's liability in excess of Nebraska State Statute for item (3) below, providing evidence
356 that contractor has in full force and effect the following minimum insurance with insurers authorized to
357 do business in the State of Nebraska. The certificate of insurance shall also provide that PRRIP shall be
358 notified in writing by the carrier at least 30 days prior to any cancellation of said insurance.

359

- 360 1. Workers' compensation insurance as required above;
- 361 2. Motor vehicular liability insurance with limits of not less than \$1,000,000 combined single limit which
362 insurance shall be applicable to any and all vehicles utilized by contractor to provide the services
363 requested by PRRIP;
- 364 3. General liability insurance for all services rendered by contractor for the requested services with a
365 minimum of \$1,000,000 personal and advertising injury and \$1,000,000 general aggregate.

366

367 Contractor Liability: If a wildfire occurs as the result of the Contractor's failure to follow the approved
368 Prescribed Fire Plan, the Contractor shall be liable for all damages and all costs for labor, subsistence,
369 equipment, supplies, and transportation deemed necessary to control the escaped fire and repair/replace
370 all PRRIP, personal and/or non-federal public property.

371

372 Open Burning Permits: A burning permit from the Rural Fire Protection Districts fire chief with
373 jurisdiction over the area to be burned is required. Names and contact information of the local fire chief
374 will be available and it will be the responsibility of the burn manager to make contact with the fire chief,



375 present the written burn plan and obtain a signed copy of the “Open Burning Permit.” A copy of this burn
376 permit must be provided to PRRIP with the final copy of burn plan for each burn unit.

377
378

379 **VI. SUBMISSION REQUIREMENTS**

380 All interested parties having experience providing the services listed in this RFP are requested to submit a
381 proposal.

382

383 *Instructions for Submitting Proposals*

384 One original and two (2) copies of your proposal and supporting documentation must be submitted by
385 mail to Tim Tunnell *no later than 12:00 PM Central Time Thursday, February 20, 2015*. A proposal is
386 late if received after that time and will not be considered. Proposals should be submitted to:

387

388 Tim Tunnell, Land Manager
389 Platte River Recovery Implementation Program
390 4111 4th Avenue, Suite 6
391 Kearney, NE 68845

392

393 Questions regarding the information contained in this RFP should be submitted to Tim Tunnell at
394 tunnelt@headwaterscorp.com. A list of compiled Contractor questions and responses will be maintained
395 on the Program web site (www.PlatteRiverProgram.org) in the same location as this RFP solicitation.

396

397 *RFP Schedule*

398 The ED Office expects to complete the selection process and award the work by approximately February
399 25, 2015. The following table represents the RFP schedule:

400

Description	Date	Time (Central)
Issue RFP	January 23, 2015	NA
Pre-proposal meeting	February 4, 2015	1:00 PM
Last day for respondents to submit questions regarding the RFP	February 11, 2015	12:00 PM
Proposals due from respondents	February 20, 2015	12:00 PM
Evaluation of proposals	February 20, 2015 - February 25, 2015	
Award of Work	On February 25, 2015	
Start of Work	Approximately April 1, 2015	
Completion of Work	Approximately May 31, 2015	

401

402 *Pre-Proposal Meeting*

403 A mandatory pre-proposal meeting of interested parties will be held on February 4, 2015 from 1:00 to
404 2:00 p.m. Central Time via conference call for the purpose of familiarizing the respondents with the work
405 scope and requirements included herein before submitting a response to this RFP. Please email Tim
406 Tunnell (tunnelt@headwaterscorp.com) for the conference call dial-in information along with a list of
407 people from your party expected to join in the pre-proposal conference call by 12:00 p.m. central time on
408 February 2, 2015.

409

410 It is the Consultant’s responsibility, while at the pre-proposal meeting/conference call, to ask questions
411 necessary to understand the RFP so the respondent can submit a proposal that is complete and in



412 accordance with RFP requirements. There shall be no minutes distributed by the ED Office regarding the
413 meeting.

414

415 Proposal Content

416 Proposals must include the following contents and documentation:

417

418 1) **Executive summary** that presents a brief firm overview that condenses and highlights the contents of
419 the proposal in such a way as to provide a broad understanding of the Contractor's qualifications and
420 proposal.

421

422 2) **Project Understanding** that demonstrates the Contractor's understanding of project objectives and
423 identifies issues critical to project success.

424

425 3) **Project approach** that documents how the Contractor would organize and execute the scope of work
426 detailed in this RFP and provides project team organization, certifications, and responsibilities and
427 specifies which team members will work on each specific task.

428

429 4) **Qualifications and project experience** relevant to this project including the involvement/role of the
430 proposed team in those projects. A sample project experience/reference form is included in Section
431 VII.

432

433 5) **Equipment** list that includes all equipment that would be mobilized for this project.

434

435 6) **Cost rate** per acre for prescribed fire implementation. A cost form has been included in Section VII.

436

437 7) **Description of insurance** shall be provided with the proposal. Proof of insurance will be required
438 before a contract is issued. Minimum insurance requirements are described in Section V.

439

440 8) **Affirmative statement** that neither the firm nor the principals of the firm are on the federal
441 suspended and disbarred list. If the firm has a DUNS number, please provide to assist in verification.

442

443 Criteria for Evaluating Proposals

444 The GC will appoint a Proposal Selection Panel that will evaluate all proposals and select a Consultant
445 based on the following principal considerations:

446

447 1. Understanding of the overall objectives of the project and approach to meeting those objectives.

448

449 2. Qualifications and experience completing comparably sized prescribed burn projects safely and in a
450 timely manner.

451

452 3. The number/type of qualified personnel/equipment proposed to be dedicated to the project.

453

454 4. Ability to provide turn-key prescribed burns services.

455

456 5. Price proposal.

457

458 The winning proposal will be selected to best meet overall project objectives. Should the successful
459 Proposers be unable at any time to accomplish the work they have been contracted for or meet any of the



460 requirements or standards listed in this Proposal, the next ranked Contractor may be contacted to provide
461 the required work.

462

463 Award Notice

464 After completing the evaluation of all proposals, the Proposal Selection Panel will select a Contractor.
465 That firm will negotiate with the ED Office to establish a fair and equitable contract. If an agreement
466 cannot be reached, a second firm will be invited to negotiate and so on. If the Program is unable to
467 negotiate a mutually satisfactory contract with a Consultant, it may, at its sole discretion, cancel and
468 reissue a new RFP.

469

470 Program Perspective

471 The Program GC has the sole discretion and reserves the right to reject any and all proposals received in
472 response to this RFP and to cancel this solicitation if it is deemed in the best interest of the Program to do
473 so. Issuance of this RFP in no way constitutes a commitment by the Program to award a contract, or to
474 pay Contractor's costs incurred either in the preparation of a response to his RFP or during negotiations,
475 if any, of a contract for services. The Program also reserves the right to make amendments to this RFP by
476 giving written notice to Contractors, and to request clarification, supplements, and additions to the
477 information provided by a Contractor.

478

479 By submitting a proposal in response to this solicitation, Contractors understand and agree that any
480 selection of a Contractor any decision to reject any or all responses or to establish no contracts shall be at
481 the sole discretion of the Program. To the extent authorized by law, the Contractor shall indemnify, save,
482 and hold harmless the Nebraska Community Foundation, the states of Colorado, Wyoming, and
483 Nebraska, the Department of the Interior, members of the GC, and the ED Office, their employees,
484 employers, and agents, against any and all claims, damages, liability, and court awards including costs,
485 expenses, and attorney fees incurred as a result of any act or omission by the Contractor or its employees,
486 agents, sub-Contractors, or assignees pursuant to the terms of this project. Additionally, by submitting a
487 proposal, Contractors agree that they waive any claim for the recovery of any costs or expenses incurred
488 in preparing and submitting a proposal.

489

490 **VII. PROPOSAL RESPONSE FORMS**

491 The following forms are to be submitted as part of Contractor proposals.

492

493



PLATTE RIVER RECOVERY IMPLEMENTATION PROGRAM

**2015 PRESCRIBED FIRE MANAGEMENT SERVICES
COST RATE:**

494
495
496
497
498
499
500
501
502
503
504
505

Lump sum rates will include all pre-burn planning (burn unit reconasissance, burn plan development, obtaining burn permit from appropriate fire department, neighbor notifications), fire-line preparation, mobilization and demobilization. Per-acre rates will include ignition and stand-by time, mop-up and monitoring time (within the first 24 hours after ignition is complete) as well as all other labor, materials, equipment, tools, transportation, equipment mobilization, and supplies required to complete the work.

The Contractor is required to submit unit prices for all work Items below.

Item No.	Description	Unit	Unit Price
001	Mobilization and Demobilization ¹	LS	\$ _____
002	Prescribed Fire Administration ²	LS	\$ _____
003	Prescribed Fire Implementation ³	AC	\$ _____

506

¹ Item includes costs to mobilize all personnel and equipment needed to complete the work from contractor’s base of operations to NE and costs to demobilize from NE to contractor’s base of operations at the termination of the performance period.

² Item includes burn unit reconnaissance, burn plan development, obtaining burn permit from appropriate fire department, and neighbor notifications for each unit.

³ Item includes cost of labor for fully equipped NWCG crew for a prescribed burning detail within PRRIP project area. This includes ignition and stand by time, mop up and monitoring time within the first 24 hours after ignition is complete on each unit. Item also includes all materials, equipment, tools, transportation, fuel and supplies to complete the work for a prescribed burning detail.



PLATTE RIVER RECOVERY IMPLEMENTATION PROGRAM

SIMILAR PROJECTS:

507
508
509
510
511
512
513
514
515
516
517
518
519
520
521
522
523
524
525
526
527
528
529
530
531
532
533
534
535
536
537
538
539
540
541
542
543
544
545
546
547
548
549
550
551
552
553
554
555

COMPLETED PROJECT: _____

AGENCY/COMPANY: _____

CONTACT: _____ TELEPHONE: _____

START DATE: _____ COMPLETION DATE: _____

(month/year)

(month/year)

NUMBER OF ACRES RESPONSIBLE FOR BURNING/YEAR: _____

DESCRIPTION OF STAND TYPE(S)/FUEL LEVEL(S) BURNED: _____

IGNITION METHOD(S) USED: _____

TOTAL ACRES BURNED: _____

CERTIFIED PRESCRIBED BURN MANAGER(S) ASSIGNED TO PROJECT: _____

COMPLETED PROJECT: _____

AGENCY/COMPANY: _____

CONTACT: _____ TELEPHONE: _____

START DATE: _____ COMPLETION DATE: _____

(month/year)

(month/year)

NUMBER OF ACRES RESPONSIBLE FOR BURNING/YEAR: _____

DESCRIPTION OF STAND TYPE(S)/FUEL LEVEL(S) BURNED: _____

IGNITION METHOD(S) USED: _____

TOTAL ACRES BURNED: _____

CERTIFIED PRESCRIBED BURN MANAGER(S) ASSIGNED TO PROJECT: _____



556 COMPLETED PROJECT: _____

557
558 AGENCY/COMPANY: _____

559 CONTACT: _____ TELEPHONE: _____

560
561 START DATE: _____ COMPLETION DATE: _____
562 (month/year) (month/year)

563 NUMBER OF ACRES RESPONSIBLE FOR BURNING/YEAR: _____

564
565 DESCRIPTION OF STAND TYPE(S)/FUEL LEVEL(S) BURNED: _____
566 _____
567 _____

568
569 IGNITION METHOD(S) USED: _____

570
571 TOTAL ACRES BURNED: _____

572
573 CERTIFIED PRESCRIBED BURN MANAGER(S) ASSIGNED TO PROJECT: _____
574 _____
575 _____

576
577
578
579

580 COMPLETED PROJECT: _____

581
582 AGENCY/COMPANY: _____

583 CONTACT: _____ TELEPHONE: _____

584
585 START DATE: _____ COMPLETION DATE: _____
586 (month/year) (month/year)

587 NUMBER OF ACRES RESPONSIBLE FOR BURNING/YEAR: _____

588
589 DESCRIPTION OF STAND TYPE(S)/FUEL LEVEL(S) BURNED: _____
590 _____
591 _____

592
593 IGNITION METHOD(S) USED: _____

594
595 TOTAL ACRES BURNED: _____

596
597 CERTIFIED PRESCRIBED BURN MANAGER(S) ASSIGNED TO PROJECT: _____
598 _____
599 _____

600
601
602
603



PLATTE RIVER RECOVERY IMPLEMENTATION PROGRAM

REFERENCES:

(Names/address/telephone of three clients who can attest to your experience as it relates to the services you are proposing.)

604
605
606
607
608
609
610
611
612
613
614
615
616
617
618
619
620
621
622
623
624
625
626
627
628
629
630
631
632
633
634
635
636

FIRM NAME: _____
ADDRESS: _____
CONTACT PERSON: _____
TELEPHONE: _____
EMAIL: _____
FAX: _____

FIRM NAME: _____
ADDRESS: _____
CONTACT PERSON: _____
TELEPHONE: _____
EMAIL: _____
FAX: _____

FIRM NAME: _____
ADDRESS: _____
CONTACT PERSON: _____
TELEPHONE: _____
EMAIL: _____
FAX: _____



637 **APPENDIX - A**
638 **PLATTE RIVER RECOVERY IMPLEMENTATION PROGRAM**
639 **PRESCRIBED FIRE STANDARDS**

640
641 **INTRODUCTION**

642 These Standards are designed to define procedures to be used by personnel involved in the planning,
643 reviewing, approving and implementing of prescribed fire on Platte River Recovery Implementation
644 Program (PRRIP) property.

645
646 **GUIDELINES**

647 **1. Prescribed Fire Implementation**

648
649 Prescribed fires on PRRIP lands are required to be conducted in compliance with Nebraska Statutes
650 subsection 81-520.01 and 81-520-02 and any other applicable laws.

651
652 Fireline installation and plowing will follow guidelines identified in the PRRIP Fireline Standards
653 document (Appendix B).

654
655 By 5:00 PM one day prior to ignition or by 8:30 AM the day of the burn, the Burn Manager responsible
656 for conducting the burn will notify the PRRIP Land Manager by *e-mail* indicating the location of the burn
657 area (Section, Township, Range), the tract name, the county where the burn will be conducted, and the
658 approximate acreage planned. The Land Specialist and the PRRIP Receptionist will also be copied on this
659 e-mail. In the event of an escaped prescribed fire, contractors should initiate suppression actions, contact
660 local fire chief with jurisdiction over the area, and then notify the PRRIP Land Manager or the Land
661 Specialist. If the escape impacts private property, the landowner should be contacted by the Land
662 Specialist. The Burn Manager responsible for conducting the burn should document the results of the
663 escape using photos, GPS, maps, and a written narrative describing the incident including any adverse
664 results; any involvement from local fire department with jurisdiction over the area to contain the escape
665 should also be documented. Written communication outlining the general details of the incident should be
666 sent to the PRRIP Land Manager within 48 hours. A full report documenting the all the above
667 information should be submitted within one week following the incident.

668
669 **2. Prescribed Burn Manager Requirements**

670
671 All prescribed fires on PRRIP land will be managed by a NWCG Certified Prescribed Burn Boss as
672 defined in the Wildland Fire and Prescribed Fire Qualification System Guide published by the National
673 Wildfire Coordinating Group (NWCG), Publication Numbers PMS 310-1 and NFES 1414 (January 2009)
674 and shall have detailed functional knowledge and specialized experience with prescribed burning in
675 grassland fuels. The certified Burn Manager must be present on site at all times during burn operations.
676 An updated copy of the Burn Manager’s current certification status card must be provided to Land
677 Manager prior to ignition. All required personnel, equipment, firebreaks and permits as established by law
678 must also be accounted for prior to ignition.

679 **3. Training/Safety Criteria**

680
681 Due to the inherent dangers of working with fire, minimum requirements must be implemented to ensure
682 that personnel are adequately trained and equipped to participate in a prescribed fire. These minimum



683 requirements apply to all participants involved in prescribed fire on PRRIP lands including PRRIP
684 personnel, burn contractors, cooperators from other agencies and students. The Contractor shall ensure
685 that all of his personnel are qualified to perform the duties of ignition, holding, patrol and mop-up as
686 defined in the Wildland Fire and Prescribed Fire Qualification System Guide published by NWCG,
687 Publication Numbers PMS 310-1 and NFES 1414 (January 2009).

688

689 Personal Protection Equipment:

690 The Contractor shall ensure that all crew members arrive at the work site with required personal
691 protective clothing and equipment, including: a serviceable National Fire Protection Association (NFPA)
692 approved fire shelter; a NFPA approved hardhat; eye protection; hearing protection; NFPA approved
693 flame resistant shirt and pants; NFPA approved leather gloves; and heavy-duty, leather, laced boots with
694 non-skid soles and tops at least eight inches high. The Contractor shall ensure the personal protective
695 clothing and equipment is operable and maintained in good repair. All personnel shall wear personal
696 protective clothing and equipment during all burning and mop-up operations. All personnel on a burn site
697 must have two-way radio communications with the burn manager and required suppression equipment.
698 Contractors are also encouraged to obtain radios that are programmable.

699

700 4. Prescribed Burn Purpose/Objectives

701

702 The burn purpose and objective for each prescribed burn will be determined by PRRIP staff. This
703 information will be conveyed to contractors before the burn is implemented to help with burn plan
704 development. In general, the burn purpose will describe an overall goal such as site preparation or hazard
705 reduction and the burn objective will identify a specific, measurable, parameter such as remove 75% of
706 available fuels. Prior to the burn, Burn Managers will evaluate the site to determine the type of ignition
707 methods, firing techniques and weather conditions needed to meet the pre-determined objective, safely
708 conduct the burn, and minimize negative effects such as duff ignition/soil damage, crown scorch, or
709 smoke management problems. This information will be included in the burn plan.

710

711 5. Prescribed Burn Plans

712

713 Burn plans will be written on a NWCG approved burn form or an alternative form approved by the
714 PRRIP Land Manager. Fully completed, legible, burn plans will be delivered to the PRRIP Land Manager
715 within one week following the completion of the burn. These plans must be signed by the Burn Manager.
716 Burn Managers will follow the PRRIP's Weather Parameter Standards (Appendix–A) when planning and
717 implementing prescribed burns. Fire weather forecasts for the appropriate county containing the burn site
718 will be used the day of the burn. These are available from the following National
719 Weather Service online sources:

720

721 Hastings:

722 <http://www.srh.noaa.gov/jax/text.php?sid=JAX&pil=FWF>

723

724 North Platte:

725 <http://www.srh.noaa.gov/productview.php?pil=TAEFWFTA&version=0>

726

727 **A copy of these forecasts must accompany the burn plan when**
728 **submitted to the PRRIP.**

729



730 The PRRIP requires that contractors keep good records of all pre-burn planning and site evaluation
 731 measures as well as actual firing techniques used during prescribed burn implementation. This will
 732 include full documentation of information such as: burn purpose and objective, Forecasted and actual
 733 weather conditions, soil moisture conditions (including soil saturation and depth to water in wetlands), the
 734 location of heavy duff layers, days since rain, and amount of rain received on the actual burn block,
 735 Keetch-Byram drought index (KBDI), etc. This information should be included in the burn plan or as an
 736 attachment. A copy of the burn plan and a site map showing burn area location, firelines, roads, and
 737 natural features shall be in the possession of the burn manager at the time of the burn. PRRIP staff will
 738 provide burn managers with a map and/or ground location point of any areas personnel should avoid.
 739 PRRIP staff may ask personnel to avoid disking, plowing or igniting fires in these areas. These sites may
 740 contain historical resources, threatened and endangered plant or animal locations, public use facilities or
 741 exotic plant infestations. Contractors will notify the PRRIP’s Land Manager within 24 hours if the
 742 following circumstances occur after the burn has been completed: 1) fire has escaped, 2) burn objectives
 743 were not met or 3) negative publicity or smoke management problems occurred.

744
 745 **6. GIS Requirements**

746
 747 Contractors must submit a shapefile showing acres burned with each invoice. To receive payment, the
 748 acreage identified in shapefile must be identical to the acreage listed on the invoice to the nearest 1/10
 749 acre. PRRIP staff will field verify and make payment based on this acreage. Shapefiles will be projected
 750 to: NAD 1983 Nebraska State Plane Feet.
 751

752 **WEATHER PARAMETER STANDARDS**

Relative Humidity	<ul style="list-style-type: none"> • > or = 25%
Fine Dead Fuel Moisture	<ul style="list-style-type: none"> • 6% Minimum • Based on predicted fine fuel moisture (from tables) or direct measurement
Wind Speed	<ul style="list-style-type: none"> • Maximum mid-flame wind speed is 15 mph • Maximum forecast 20 ft wind speed is 18 mph
Category Day	<ul style="list-style-type: none"> • Category II in rural areas unaffected by smoke • Category III when there are smoke sensitive areas downwind
KBDI	<ul style="list-style-type: none"> • = or < 400
Palmer Drought Index	<ul style="list-style-type: none"> • At least -1
Temperature	<ul style="list-style-type: none"> • 90°F Maximum.
Smoke Management	<ul style="list-style-type: none"> • 9 mph Minimum transport wind speed • 2,000 ft Minimum Mixing Height

753
 754



755 **APPENDIX – B**
756 **PLATTE RIVER RECOVERY IMPLEMENTATION PROGRAM**
757 **FIRELINE STANDARDS**
758
759

760 **INTRODUCTION:**

761 These Standards are designed to be used by contractors, cooperators and Platte River Recovery
762 Implementation Program (PRRIP) employees in the planning, reviewing, approving and construction of
763 firelines.

764
765 **GUIDELINES:**

766 A prescribed burn will not be conducted without adequate firebreaks surrounding the burn plot. The
767 installation and maintenance of firelines along PRRIP ownership boundaries and main public use roads is
768 primary while minimizing interior lines whenever possible. Natural and artificial firebreaks should be
769 utilized before installing new lines. This will help minimize soil erosion, hydrologic alterations, and
770 impacts on natural plant communities and historic or prehistoric resources. Types of natural firebreaks
771 include: rivers, lakes, streams, wetlands, etc. Artificial firebreaks are existing disturbances, facilities or
772 cleared areas that may include: firelines, roads, ditches, trails, utility easements, blacklines and foam.

773
774 PRRIP personnel must approve the establishment of new firelines prior to construction. This approval
775 will consider justification of need and route of firelines. Consideration will be given to the effect of the
776 proposed fireline route on hydrology. Fireline routes will also be assessed for threatened and endangered
777 species, archeological sites, public access facilities and exotic plants to avoid disturbing or spreading
778 these. The addition of new firelines should be considered only if necessary for accomplishing safe
779 prescribed burning. When possible, firelines should be coupled with other types of firebreaks
780 (natural/artificial) to minimize ground disturbance.

781
782 Prescribed fires that escape or become out-of-prescription are often subject to emergency plowing. On
783 PRRIP land, the preferred method for controlling such a fire is with a brush truck or other water delivery
784 vehicle or to let the fire burn to the nearest firebreak. If these methods cannot be safely and effectively
785 implemented, a tractor and fire plow should be used for suppression purposes.

786
787 **PROCEDURES:**

788
789 **Fireline Installation and Maintenance:**

790 a) Fireline installation should not adversely impact listed plant or
791 animal species, archeological resources, public use facilities such as
792 bike or hiking trails, or enable the spread of exotic plant infestations.
793 PRRIP staff will provide maps and/or ground location points of any
794 areas to be avoided. These sites may contain historical resources,
795 threatened and endangered plant or animal locations, public use
796 facilities or exotic plant infestations.

797
798 b) The PRRIP requires that all fireline installation and maintenance
799 work produce a flat line that does not contain berms that may block
800 or channel water flow. Root mats or heavy vegetation should be
801 spread out within the block to avoid fuel build-up along the edges.
802 The PRRIP prefers that firelines be reworked and maintained using



- 803 a heavy duty (forestry) harrow. Firelines installed with a dozer blade
804 or fire plow will be reworked to yield a flat line. The use of a fireplow
805 or dozer blade to install a fireline must be approved by the PRRIP
806 Land Manager.
- 807
- 808 c) If a fire plow is used to install a fireline, or control an escaped or
809 out of prescription fire, the burn contractor must rework the plowed
810 lines before demobilizing from site.
- 811
- 812 d) If a fireplow is used to control an escaped or out of prescription
813 fire, plow depth should be no greater than required to expose
814 mineral soil and stop the fire. A map of existing firebreaks, roads,
815 natural features and avoidance areas should be in the possession of
816 the plow operator and crew members at all times.
- 817
- 818 e) Firelines will not be constructed so that they create new travel
819 corridors or paths through or around areas that are cabled, gated, or
820 fenced. If a fire line is being installed along a public use road, disking
821 must be off to one side of the road, but not in the ditch, to allow
822 vehicles to continue to use the road.
- 823
- 824 f) Firelines should follow the contour of the land when possible, to
825 avoid downslope erosion. Lines should be stabilized if subject to
826 water flow by the use of water bars or turnouts.
- 827 g) Plow and harrow depth should be kept at the minimum possible at
828 all times.
- 829
- 830 h) Width of exposed mineral soil should be 6 to 8 feet for interior
831 lines after reworking.
- 832
- 833 i) Perimeter lines are critical to ensure that fires do not leave PRRIP
834 lands and impact private property. They should be wider than interior
835 lines and should be cleared 12 to 16 feet of trees and overhanging
836 vegetation. Wider lines may be required because of adjacent
837 property with heavy fuels or residential structures. Width of exposed
838 soil should be 8 to 10 feet and the line must be reworked if newly
839 plowed.
- 840
- 841 j) Wetlands should be avoided when installing firelines. A line
842 running up to a wetland incorporating it as a fire break is the best
843 method providing it does not act as a drain to channel water out of,
844 or cause erosion into the wetland. Wetlands should be burned when
845 it is possible to mimic the historical fire frequency and when it can be
846 done without risk of an organic peat layer (duff) fire.
- 847
- 848 k) When connecting firelines to wetlands and other hydrologic
849 features such as intermittent/perennial streams, rivers, lakes,
850 sinkholes, etc., firelines should stop a minimum of 75 feet from the

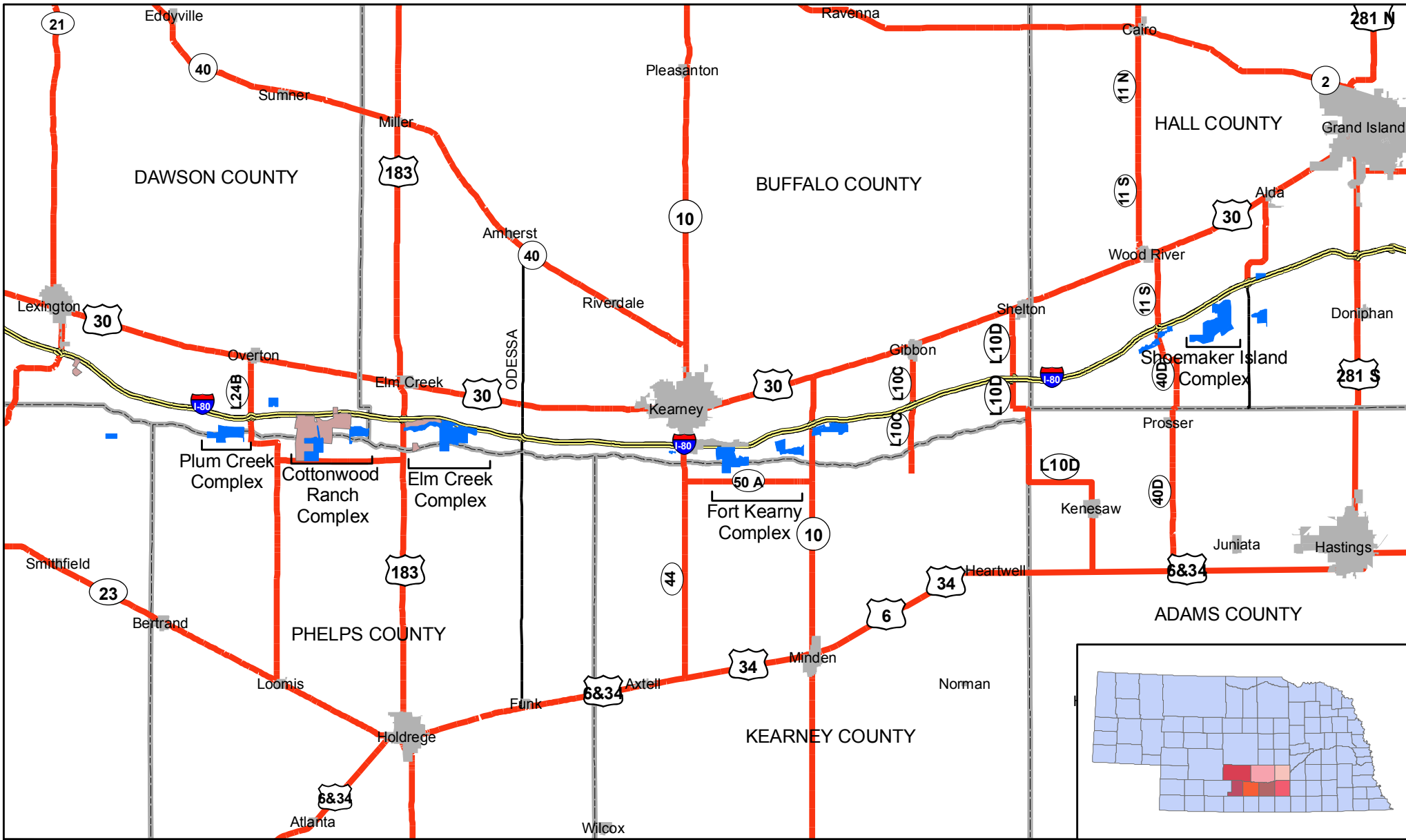


851 edge of these features. A wetline or handline can be used to tie in
852 the remaining distance.

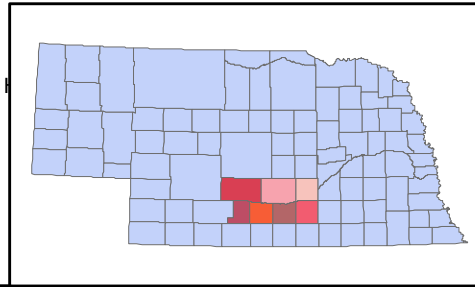
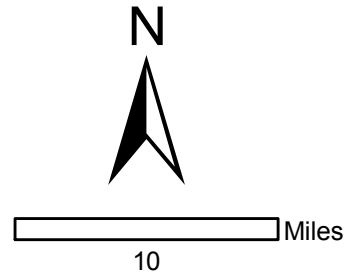
853
854 l) Firelines should not follow the edge of a natural plant community
855 because it may disturb the ecotone and destroy rare plants that
856 often occupy this zone.

857
858 m) Primary firelines such as tract boundaries should be maintained
859 at least once a year by disking if needed. Adjacent areas may
860 require mowing. When possible, fireline maintenance should occur
861 during early growing season.

862
863

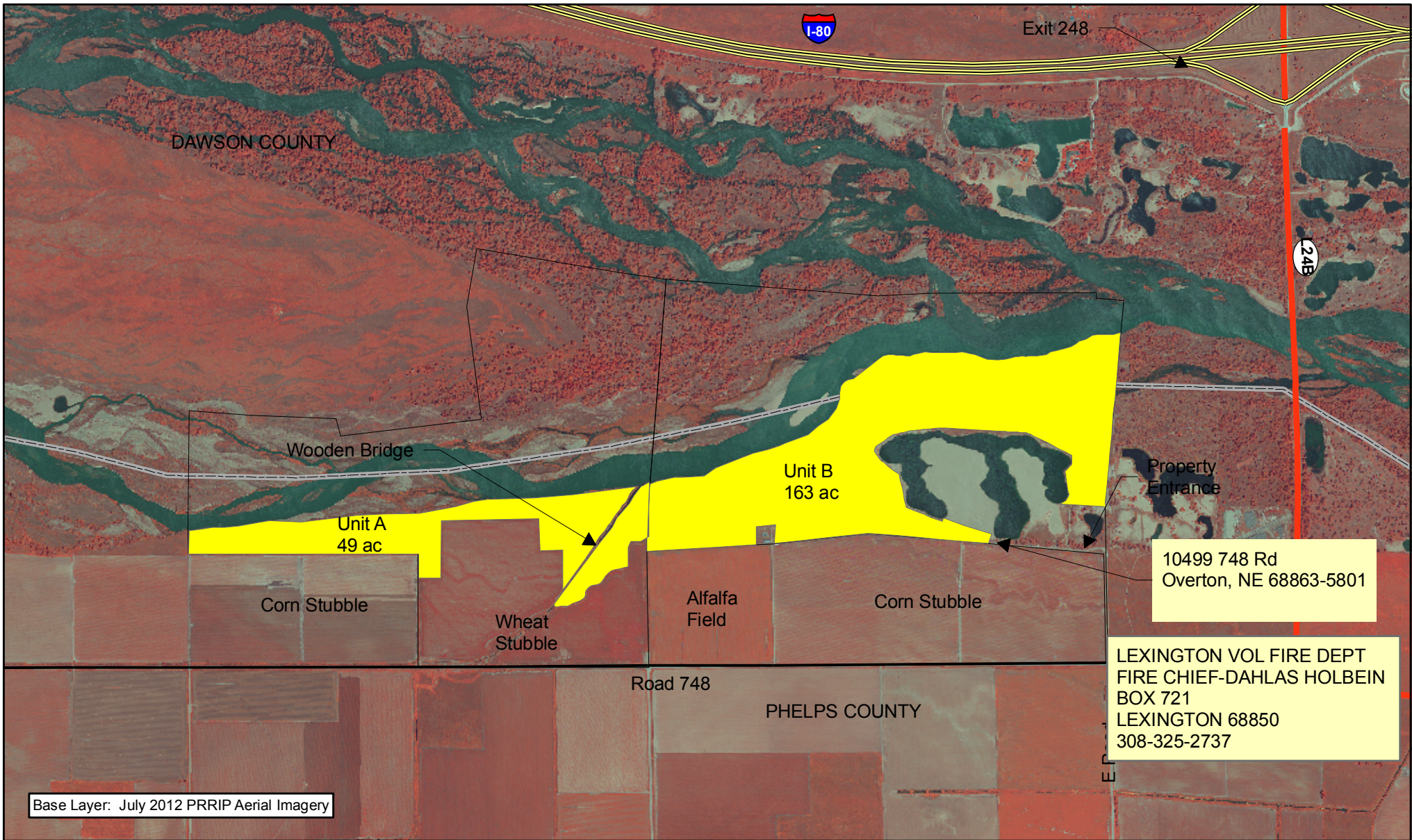


- Legend**
- County
 - Property Boundary**
 - PRRIP
 - NPPD






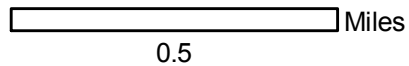
HABITAT COMPLEXES
 FY 2015
 SPRING
 BURN UNITS
 Date: 12/9/2014
 By: TRT

Figure 1



Legend

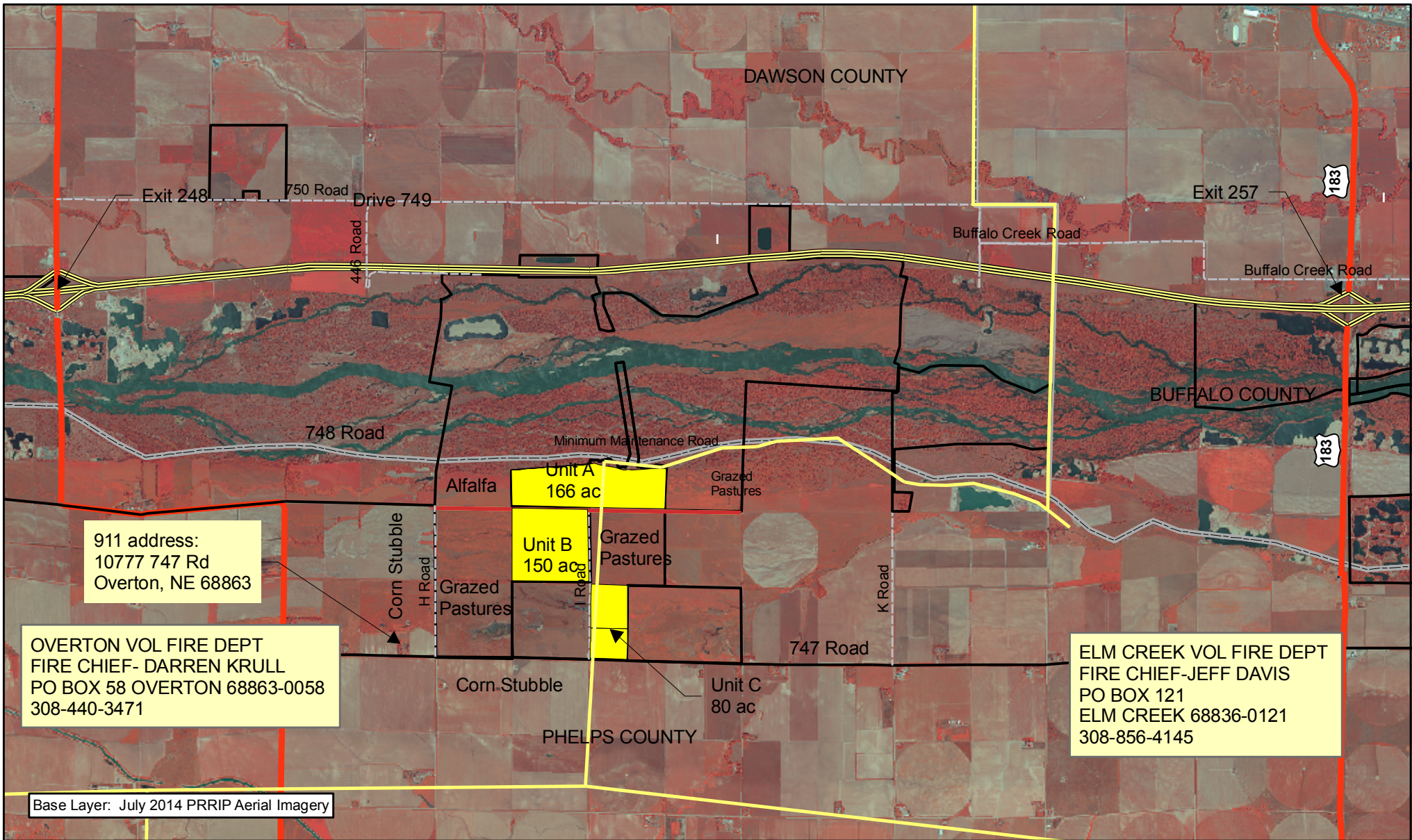
-  Property Boundary
-  County
-  2015



PLUM CREEK COMPLEX
FY 2015
SPRING
BURN UNIT

Date: 12/9/2014
By: TRT

Figure 2



Base Layer: July 2014 PRRIP Aerial Imagery

911 address:
10777 747 Rd
Overton, NE 68863

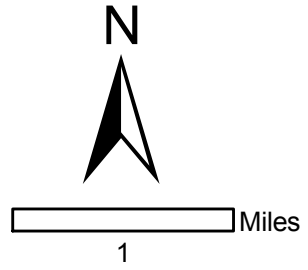
OVERTON VOL FIRE DEPT
FIRE CHIEF- DARREN KRULL
PO BOX 58 OVERTON 68863-0058
308-440-3471

ELM CREEK VOL FIRE DEPT
FIRE CHIEF-JEFF DAVIS
PO BOX 121
ELM CREEK 68836-0121
308-856-4145



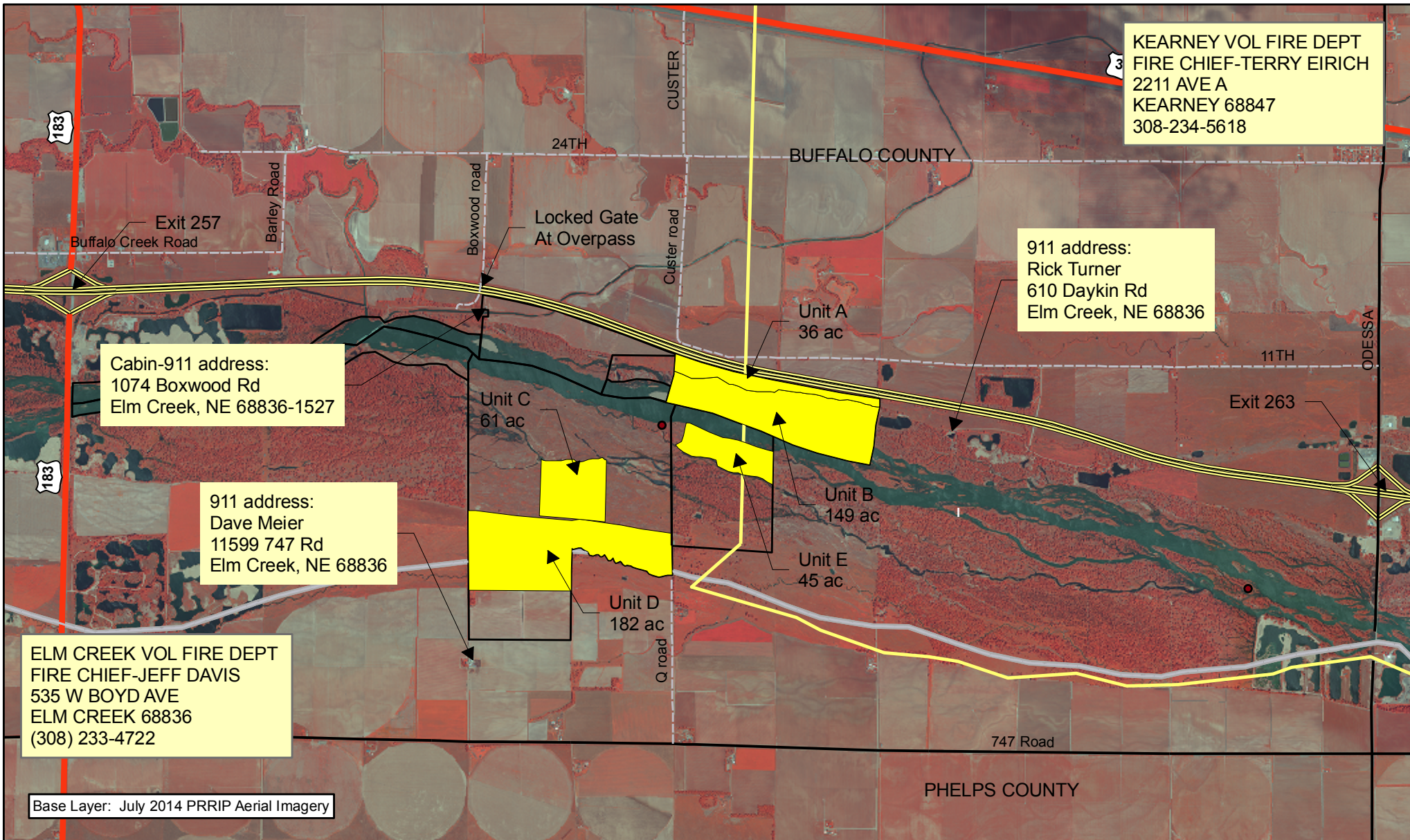
Legend

- Property Boundary
- County
- Central_Platte_Fire_Districts
- Transmission Line
- 2015



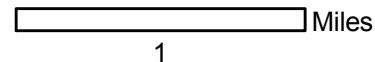
COTTONWOOD RANCH COMPLEX
FY 2015
SPRING
BURN UNITS
Date: 12/9/2015
By: TRT

Figure 3



Legend

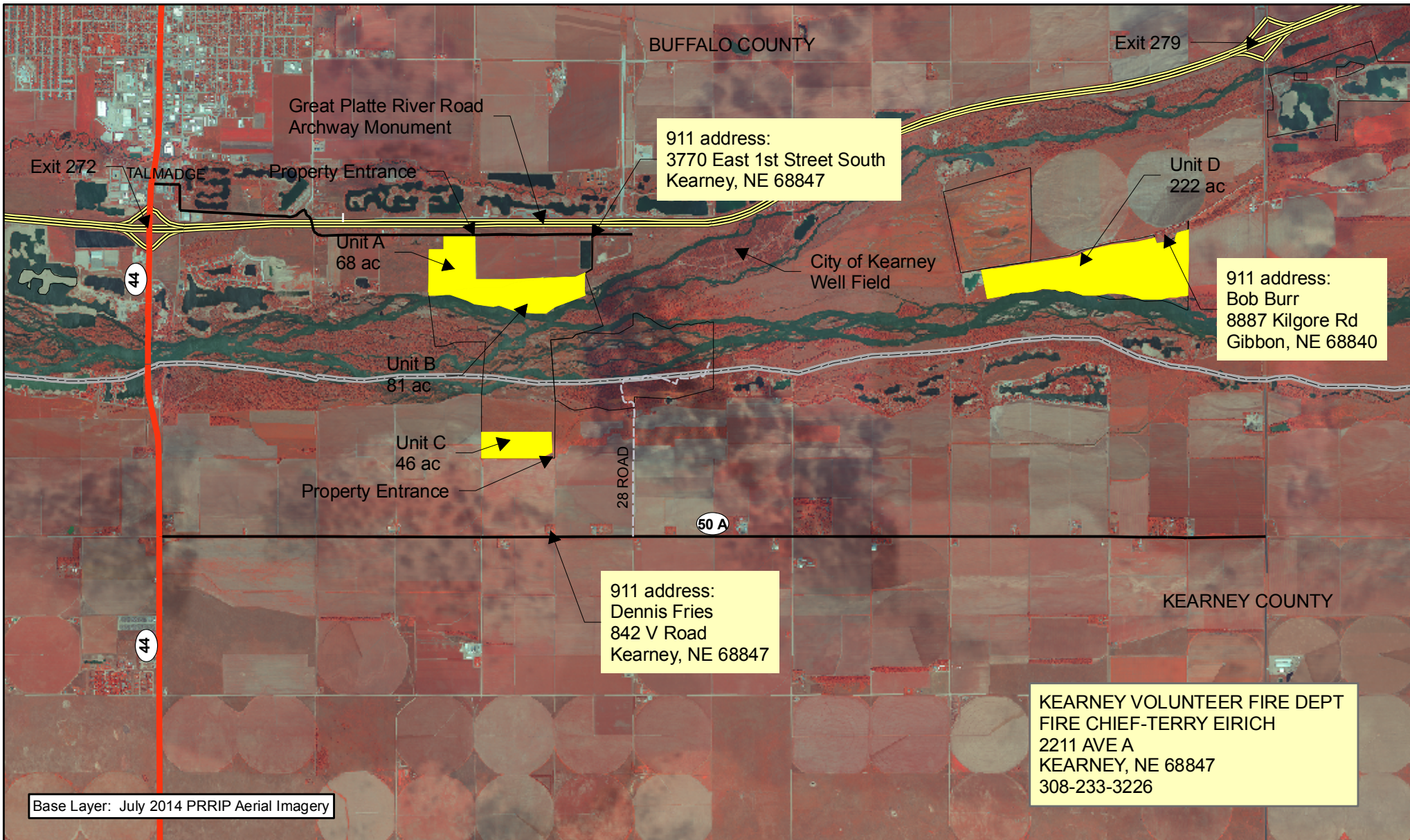
- 2015
- Bald Eagle Nest
- Central Platte Fire Districts
- Property Boundary
- County



ELM CREEK COMPLEX
 FY 2015
 SPRING
 BURN UNITS

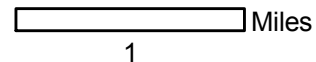
Date: 12/9/2014
 By: TRT

Figure 4



Legend

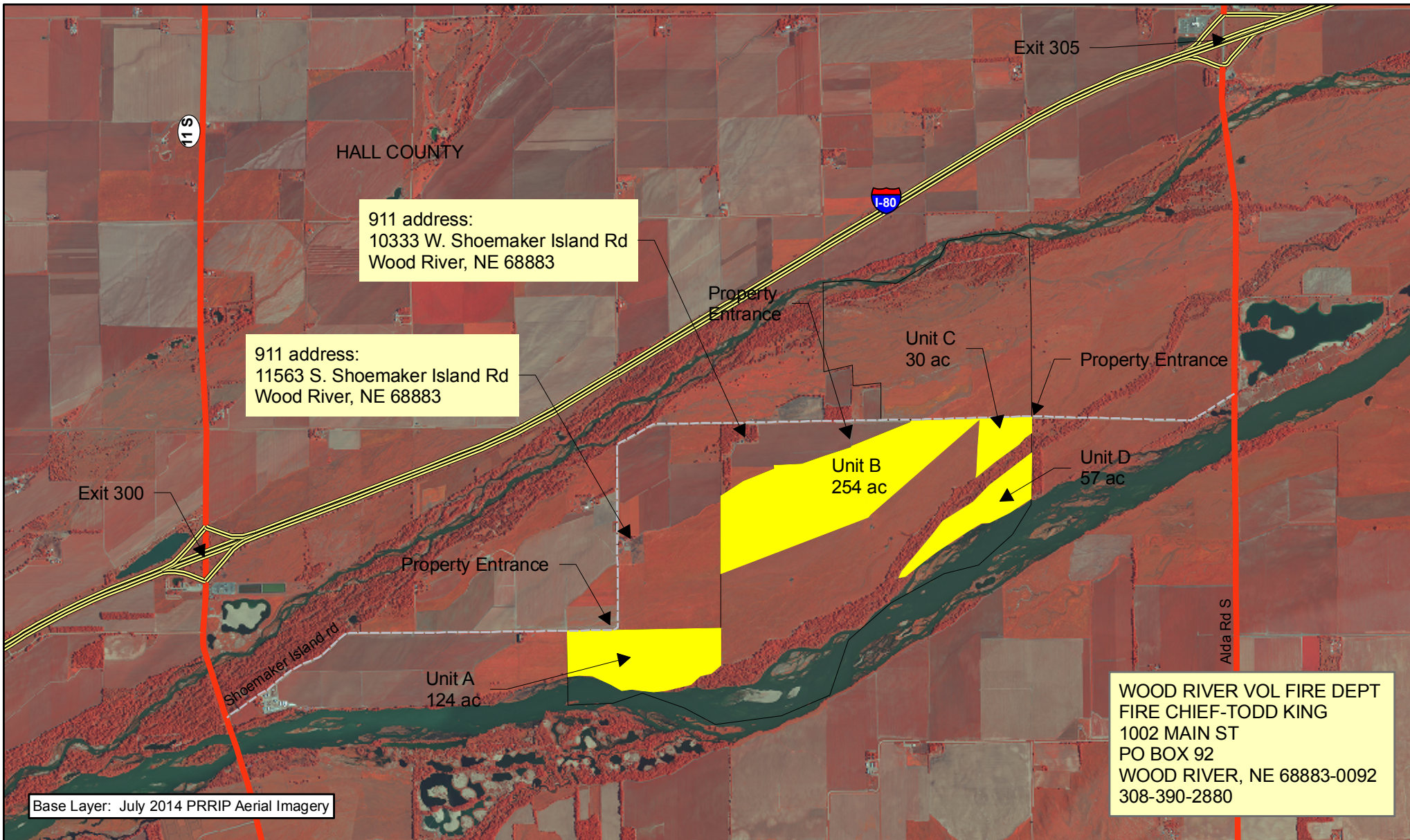
-  PRRIP
-  2015
-  County



**FORT KEARNY COMPLEX
FY 2015
SPRING
BURN UNITS**

Date: 12/9/2015
By: TRT

Figure 5



Base Layer: July 2014 PRRIP Aerial Imagery



Legend
Property Boundary
 [White box] [Yellow box]
 2015

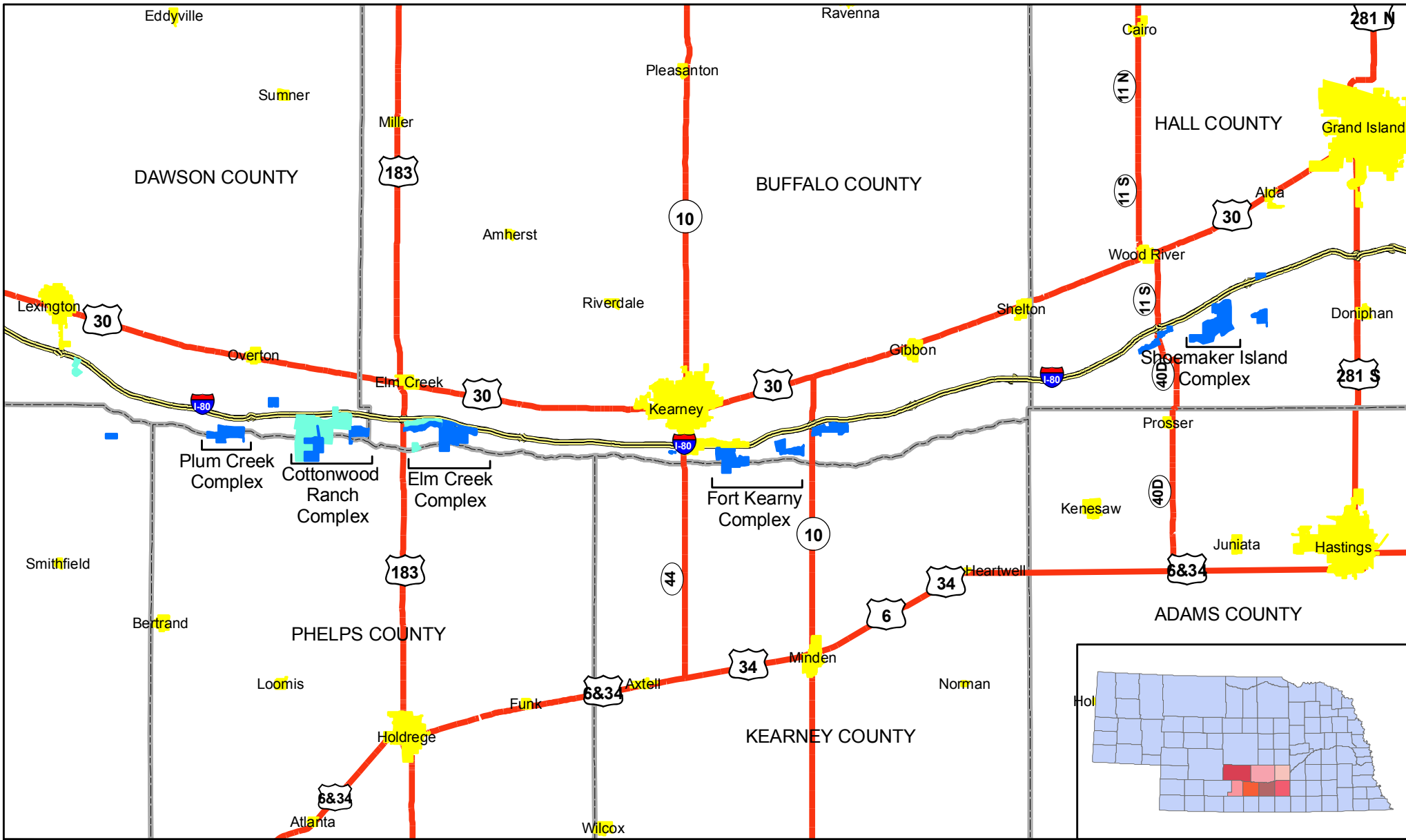


1 Miles

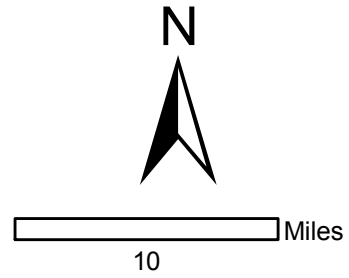
**SHOEMAKER ISLAND
 COMPLEX**
 FY 2015
 SPRING
 BURN UNITS

Date: 12/9/2015
 By: TRT

Figure 6

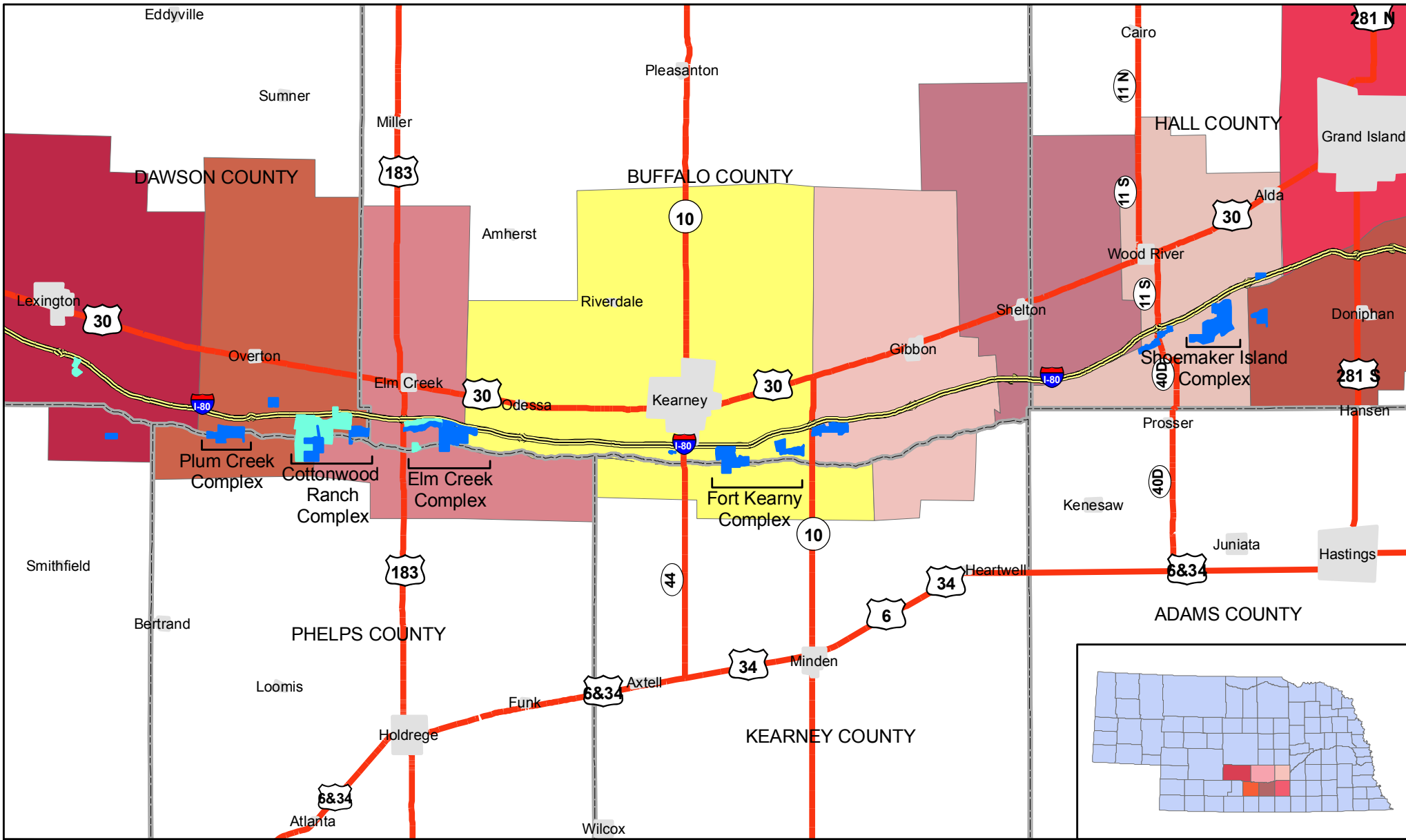


Legend
Property Boundary
OWNERSHIP
■ PRRIP
■ NPPD



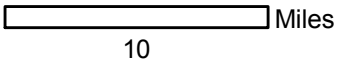
COMMUNITIES AT RISK
 FY 2015
 SPRING
 BURN UNITS
 Date: 12/9/2014
 By: TRT

Figure 7



Legend

- LEXINGTON VOL FIRE DEPT
- OVERTON VOL FIRE DEPT
- ELM CREEK VOL FIRE DEPT
- KEARNEY VOL FIRE DEPT
- GIBBON VOL FIRE DEPT & RESCUE SQUAD
- SHELTON VOL FIRE & RESCUE
- WOOD RIVER VOL FIRE DEPT
- DONIPHAN VOLUNTEER FIRE DEPT
- GRAND ISLAND RURAL FIRE DEPT



**CENTRAL PLATTE
FIRE DISTRICTS
FY 2015
SPRING BURN UNITS**

Date: 12/9/2014
By: TRT

Figure 8