

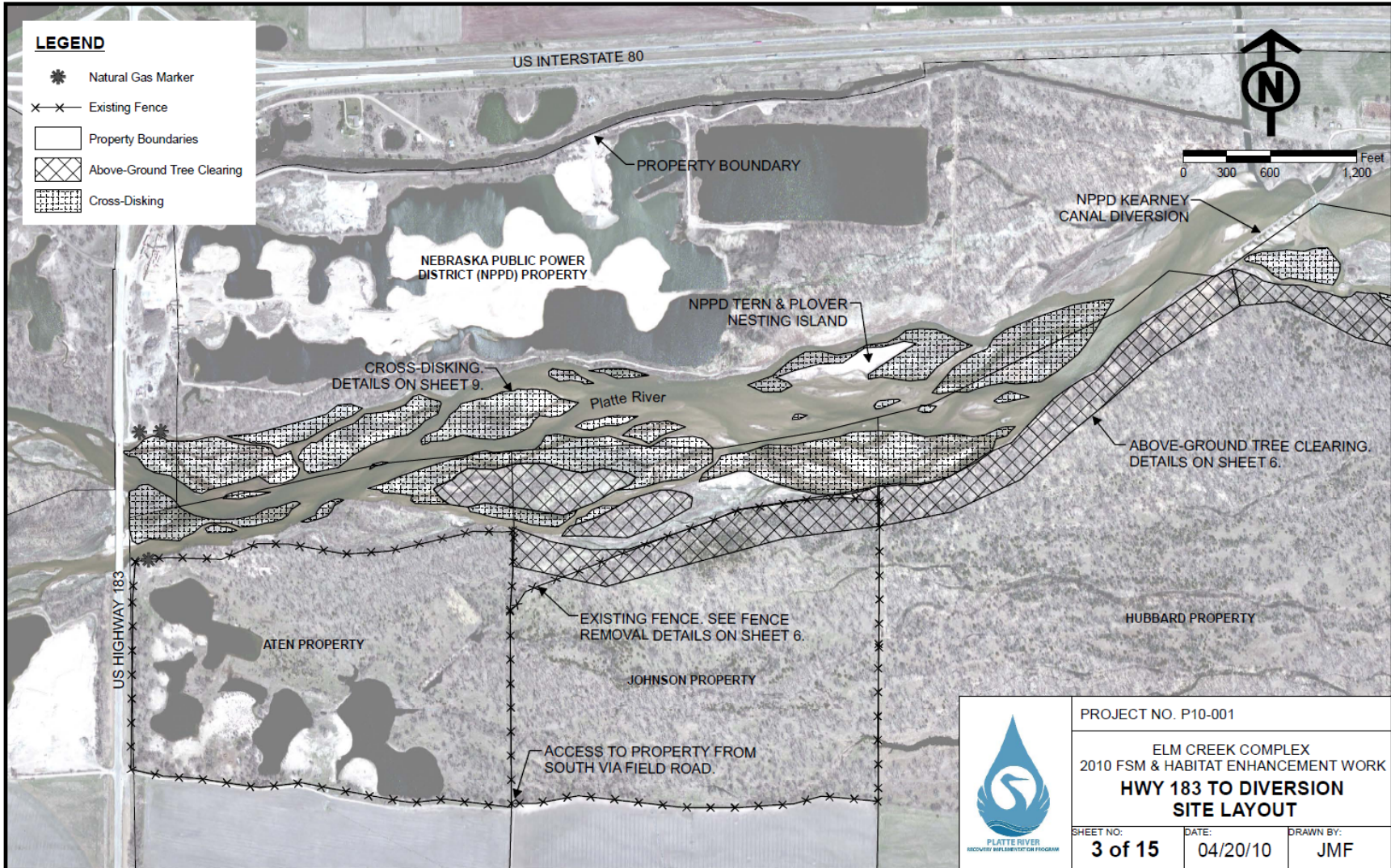


PRRIP – ED OFFICE MEMORANDUM

TO: CONTRACTORS
FROM: EXECUTIVE DIRECTOR'S OFFICE
SUBJECT: ELM CREEK COMPLEX RFP – CONTRACTORS' QUESTIONS
DATE: MARCH 14, 2011

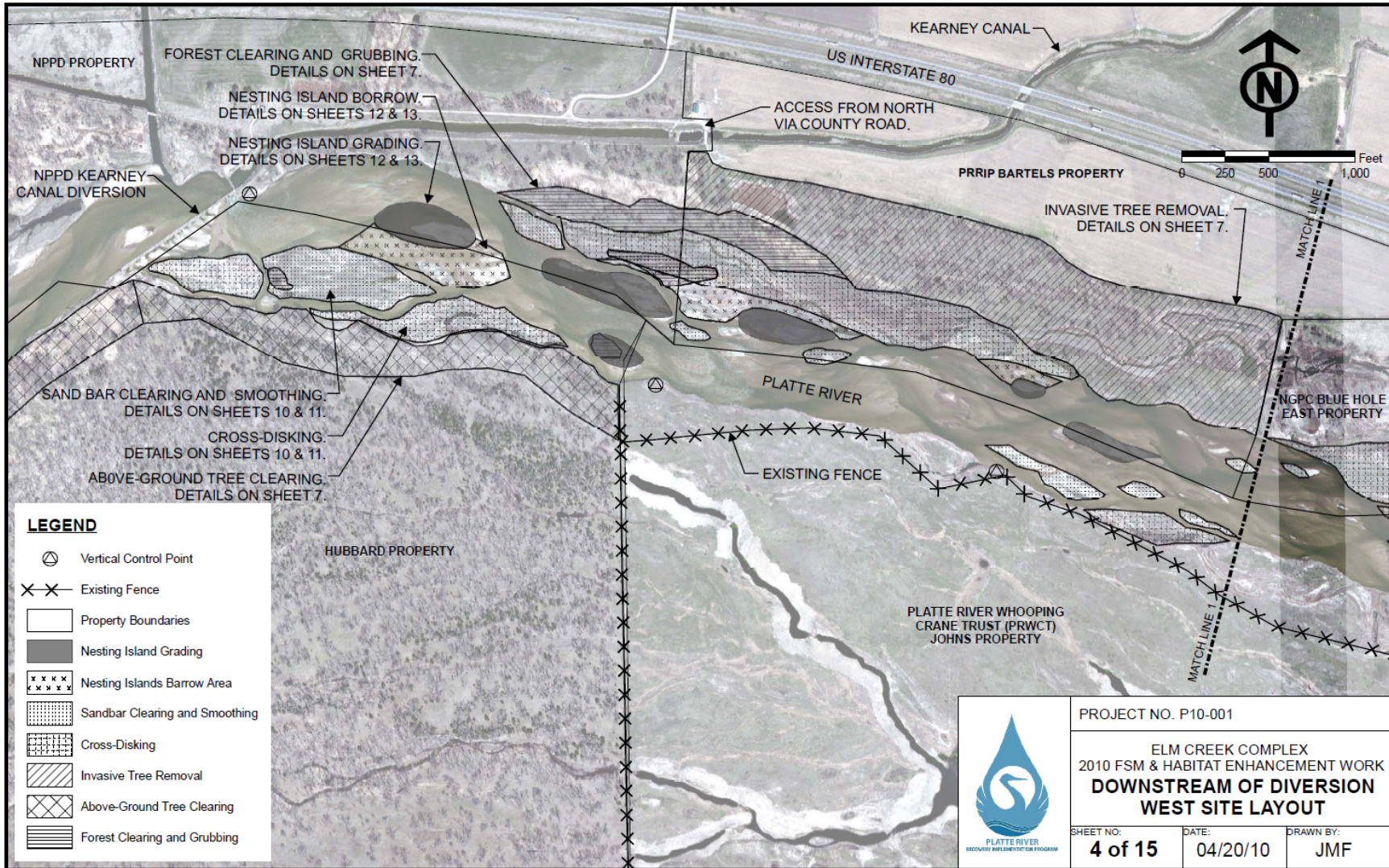
The following questions were submitted to the PRRIP Executive Director's Office (EDO) regarding the February 22, 2011 Request for Proposals for the Elm Creek Flow-Sediment-Mechanical "Proof of Concept" Experiment, Implementation Design Technical Support, Monitoring, and Data Analysis. EDO answers for each question are provided. Questions were due March 11, 2011. Proposals are due March 16, 2011.

1. Andrew Simon, USDA ARS National Sedimentation Laboratory
 - a. Question: We are assuming that we need to prepare a 3-year budget for the RFP. Is this correct? Also, is there any guidance you can provide as to a range of total costs you are expecting for this effort?
 - b. EDO Answer:
 - i. We are asking for a budget for the first year's worth of work, not for the full 3 years. That is all or part of Tasks 1-7 in the RFP. It should be relatively obvious as to which parts of those tasks are for Year 1 based on language in the SOW in the RFP.
 - ii. For budgeting purposes, we are asking Consultants to assume \$50k per monitoring event.
 - iii. Our approved Program budget for this year is \$250k. We may need to negotiate and modify the SOW to fit this budget. But that's where we're starting.
2. Jason Alexander, USGS
 - a. Question 1: Would contractors have access to do monitoring?
 - b. EDO Answer 1: PRRIP and PRRIP stakeholders own land along the ECC reach. There is some private land along south side of reach for the 2 mile upstream section of the reach. PRRIP has management agreements with those private property owners. So contractors will have full access to complete monitoring.
 - c. Question 2: Will flow levels be constant during SDHF?
 - d. EDO Answer 2: Flow levels will be constant for at least a 24-hour period, and maybe for 48-hours period. Program cooperator CNPPID will help this happen with controlled releases from J2 Return and past Tri-County Diversion. Hydrocycling would not occur during a SDHF.
3. Tom Grindeland, West Consultants
 - a. Question: Can you provide any more details on the vegetation removal that occurred last fall? In particular, can you describe the specific location and extent of the vegetation removal that occurred?
 - b. EDO Answer: The areas of cross-disking and above-ground tree clearing completed last fall within the Elm Creek Complex are shown in the attached 3 design and construction sheets. These figures are accurate to within about 95% of what was actually completed.





PRRIP – ED OFFICE MEMORANDUM





PRRIP – ED OFFICE MEMORANDUM

