

# North Platte Flood-Proofing Projects

Pre-Proposal Meeting for  
Engineering, Surveying, Permitting  
July 10, 2012



PLATTE RIVER  
RECOVERY IMPLEMENTATION PROGRAM

Platte River Recovery Implementation Program

# Overview

- Program goal
- Current flooding
- Flood-proofing goals
  - ▣ SW
  - ▣ GW



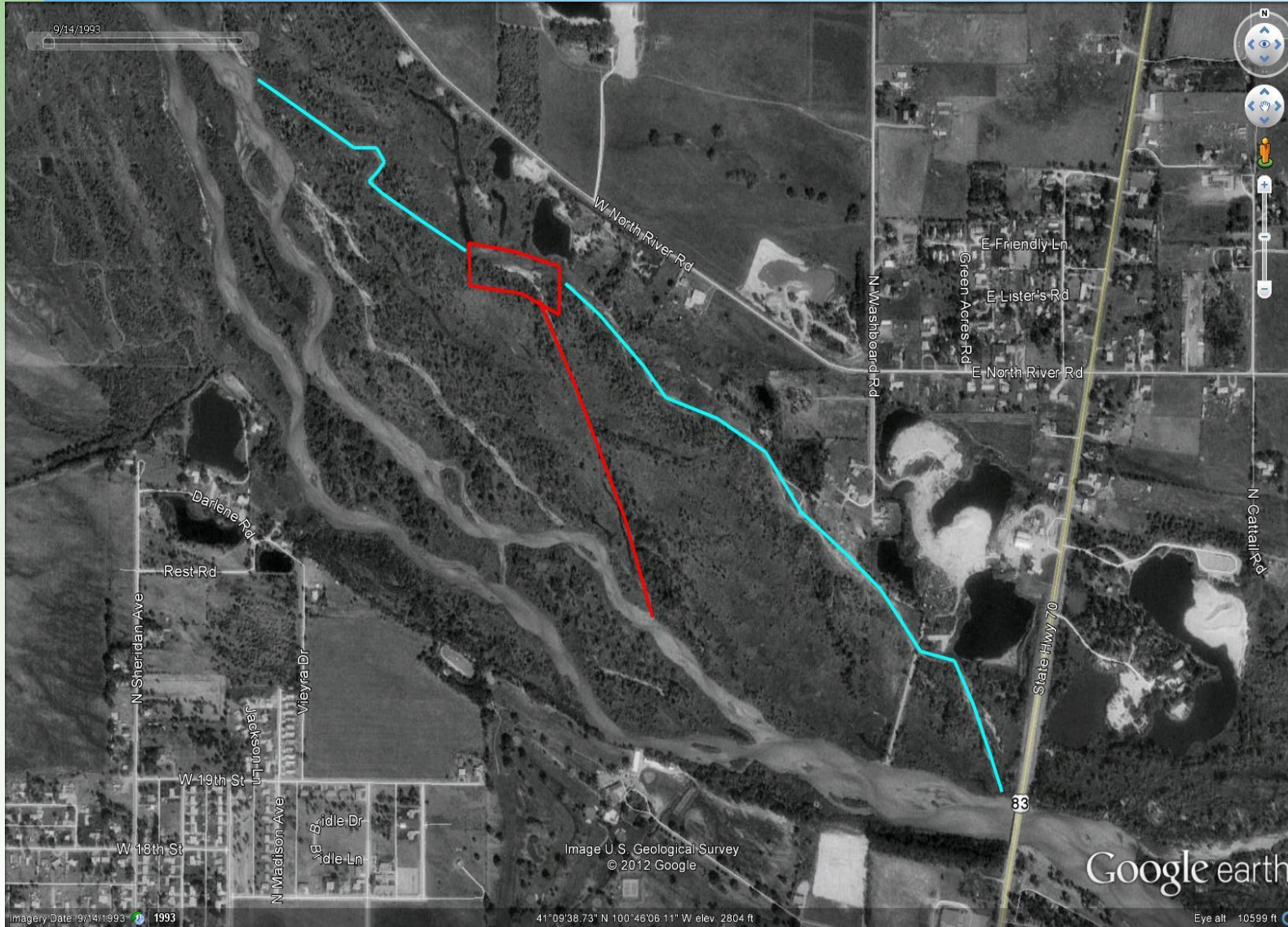
# Scope of Work

- Kickoff meeting and site visit (Aug 2012)
- Wetlands delineation (summer 2012)
- Permitting (ongoing; will drive overall schedule)
- Surveying and engineering (summer/fall 2012)
- Design plans, specs, and brief memo (Oct public meeting)





# State Channel





Head of State Channel  
Facing northeast  
Feb 2012





State Channel facing southeast, showing vegetated berm on east edge  
Feb 2012

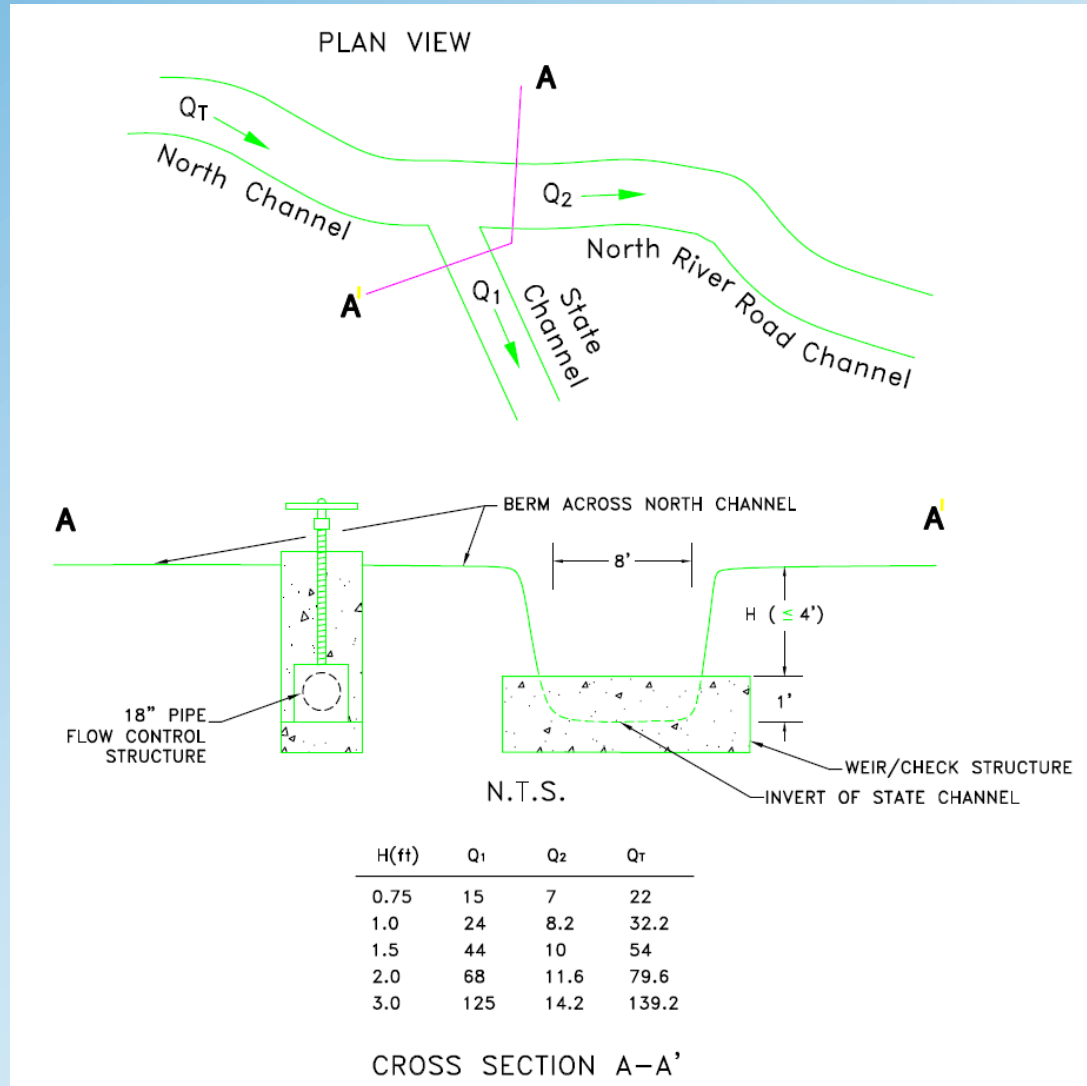




State Channel facing south, showing slight re-activation from disking  
Jun 2012



# Preliminary Design Flow Control





# Gravel Pond Outlet

- Controlled outlet and/or pump



2 x box culvert (40" wingwall)

24" corrugated pipe culvert



# Hwy 83 Culvert



2 x box culvert  
(40" wingwall)





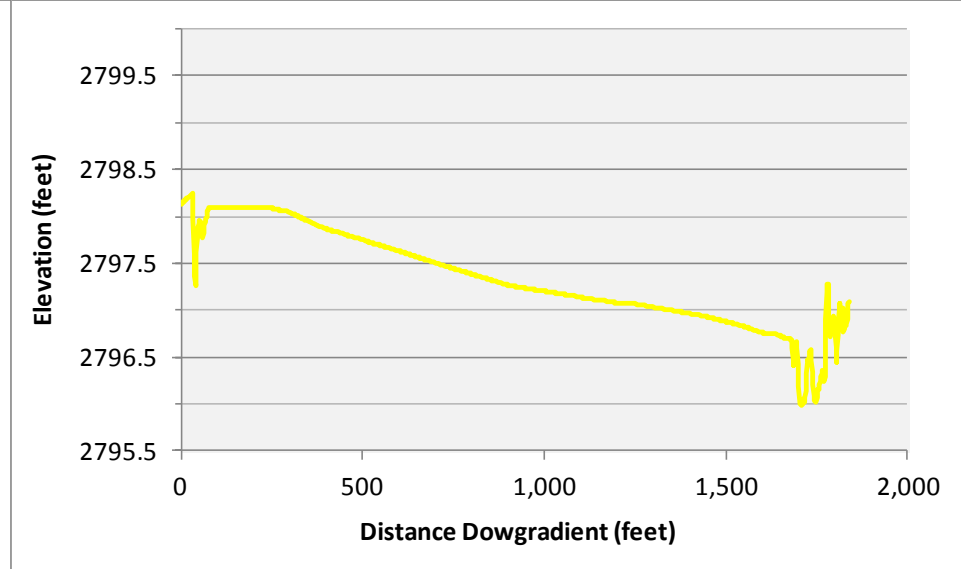
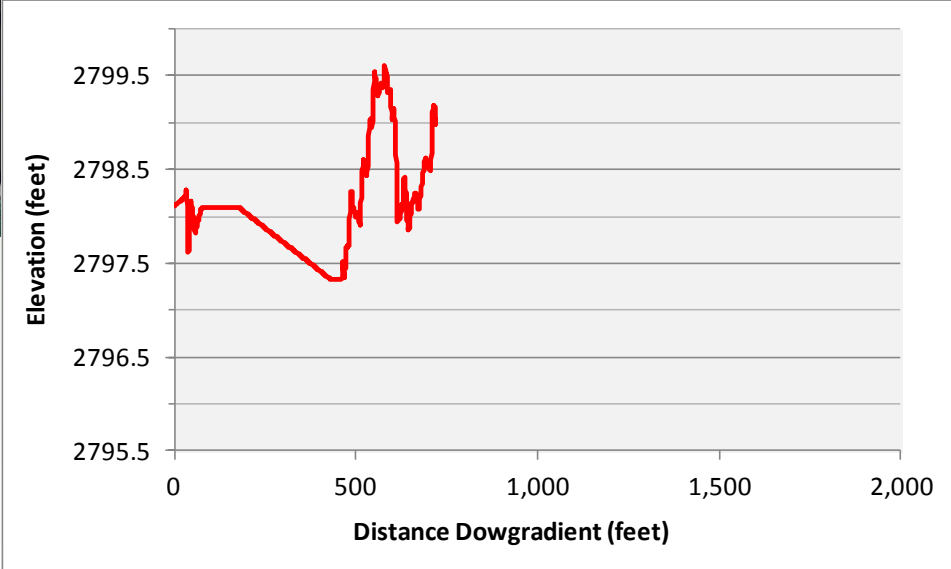
# Pond Inlet



24” corrugated pipe culvert









# Whitehorse Creek Drainage

- ~10 culverts, clean ditch, install pipe?





# Road Ditch & Culverts





# Hwy 83/N River Rd Culvert



30" concrete  
pipe culvert with  
wingwall







# Hall School Road Ditch

## Whitehorse Creek





# Permitting

- Schedule driver
- USACE 404, City, County
- Wetlands delineation = 1<sup>st</sup> step
- Meetings, applications, secure permits



# Proposals

- Budget
- Selection criteria & panel
- Limit 8MB, 50 pages
- Online questions

Description	Date
Last day for respondents to submit questions regarding RFP	July 16, 2012
Proposals due from respondents	July 19, 2012
Evaluation of proposals	July 20 to July 30, 2012
Award of Work	On or before August 2, 2012
Start of Work	Approximately August 3, 2012
Completion of Work	Approximately December 31, 2013

