



REQUEST FOR BIDS (RFB)

2017 Chemical Application Services

PLATTE RIVER RECOVERY IMPLEMENTATION PROGRAM

Office of the Executive Director
4111 4th Avenue, Suite 6
Kearney, Nebraska 68845

February 10, 2017



Contents

I. OVERVIEW 3

II. WORK DESCRIPTION & SCOPE OF WORK..... 3

III. CHEMICAL APPLICATION TIMING AND PERFORMANCE 4

IV. PROGRAM LANDS 6

V. BID ITEMS..... 8

VI. FIELD AND OFFICE EQUIPMENT 8

VII. CONTRACT TERMS..... 8

VIII. SUBMISSION REQUIREMENTS 9

IX. BID RESPONSE FORMS 11

Appendix A – Nebraska Noxious Weed List

Appendix B – Nebraska Invasive Weed Watch List

Appendix C –Chemical Management Form

Appendix D – Figures



48 **Scope of Work** The Contractor must have sufficient availability to fully utilize weather windows for
49 chemical applications at Program lands which are distributed along a 60-mile reach of the Platte River in
50 central Nebraska. The Contractor will be responsible for all labor, materials, equipment, tools,
51 transportation and supplies required to complete the work. All applicators must be certified with the
52 Nebraska Department of Agriculture as a Commercial Applicator, categories needed are: General, Ag. Plant
53 and Aquatic.

54
55 Bare ground treatments on OCSW sites will require one application in late spring- typically April 1-April
56 15 prior to nest initiation of target species and a follow-up application in late summer after all chicks have
57 fledged- typically August 15-September 1. Areas will require broadcast spraying to ensure full spray
58 coverage to the water's edge with both spring and fall applications. Equipment and spraying operations
59 shall minimize rutting and ground surface disturbance. Close communication between Program staff and
60 contractors must occur in order to avoid conflicts with spraying and target species. It is the responsibility
61 of the Contractor to coordinate with Program staff on the status of use of target species prior to mobilization
62 to the site for spraying.

63
64 Noxious weed control will typically require 3-4 trips, as needed, through grassland sites during the year.
65 Generally, trips will be in the early spring, early summer, late summer, and fall prior to first frost. A list of
66 state of Nebraska noxious weed and Watch list species can be found in Appendix A and B.

67
68 **III. CHEMICAL APPLICATION TIMING AND PERFORMANCE**
69 Contractor will be ready to begin work as soon as contract is signed. Contractor will proceed to complete
70 all the work as quickly and efficiently as possible while maintaining the quality standards listed in the Scope
71 of Work. The Program Land Manager may stop work and order the removal and/or replacement of any
72 equipment if the equipment is not working or calibrated properly. Contractor then has 48 hours to replace
73 the equipment with an acceptable substitute and remove the inadequate equipment. The Program Land
74 Manager may prohibit chemical application during adverse weather conditions (heat, cold, dry, wet, etc.).
75 If adverse weather is a problem, Contractor must furnish additional personnel and equipment to make up
76 for lost time and ensure timely completion.

77
78 Contractor must guarantee a minimum of 100% coverage of the bare ground treatment areas and at least
79 95% mortality of targeted vegetation within the areas. Acceptable coverage will be determined within five
80 days of application using several random spot inspections. Contractors are required to use marking dye to
81 help with this process. Signs of mortality will be documented at random spot inspection sites beginning
82 three weeks following application. If coverage and/or mortality rates are not met, the Program may require
83 Contractor to retreat the areas at Contractor's expense and at no additional cost to the Program. No chemical
84 herbicide applications will exceed the label rates on the herbicide containers. All requirements, including
85 state and/or local requirements, listed on the herbicide label are to be followed. Failure to comply with label
86 instructions is a violation of federal and/or state laws. Contractor is liable for any penalty, fines, or damages
87 resulting from misuse of herbicides. Unless otherwise specified, Contractor will supply and apply all
88 chemical herbicides, adjuvants, and other materials to ensure an effective kill of the target vegetation and
89 will be reimbursed for the chemical used.

90
91 Contractor is expected to minimize broadcast spraying and use spot-spraying as primary control method of
92 noxious and invasive weeds. However, broadcast spraying is allowable when infestations are larger than
93 0.25 acres. Contractor is expected to prevent overspray, drift, and/or nontarget damage to surrounding
94 vegetation, open water, structures, and/or facilities. No less than 100% of all target vegetation must be



95 treated, and no less than 95% of the treated vegetation must be killed for the control method to be considered
96 acceptable by the Program.

97
98 The Program is implementing a “Come Clean, Leave Clean” standard. All equipment used on Program
99 lands, including tractors, ATVs, UTVs, trucks, trailers, and/or Argos need to be free of any plant material.
100 The Program Land Manager will delineate a designated cleaning area on each tract for contractors to clean
101 their equipment.

102
103 The licensed supervisor is responsible to ensure the following:

- 104 • Chemical pesticides must be kept in original containers until mixing. All mixtures should
105 have temporary labels that list the trade name and rates of chemicals and any adjuvants
106 within the spray container.
- 107 • The licensed supervisor must readily have available during application copies of all
108 chemical pesticides labels and Material Safety Data Sheets (MSDS) that are being
109 applied.
- 110 • During mixing and application, all recommended Personal Protective Equipment (PPE)
111 will be properly worn to minimize applicator exposure to chemicals. All measuring cups
112 should be rinsed and the effluent poured into the tank/bottle mixture.
- 113 • Chemicals and any rinse material from chemical containers will be applied to specific
114 areas; run-off of any chemical substance is not acceptable.
- 115 • Herbicides that are mixed, transferred, or temporarily stored while on Program lands will
116 be done so at designated staging areas. Any and all containers that contain pesticide or
117 pesticide residues will be removed from Program lands once the chemical application is
118 complete.
- 119 • Herbicides will not be applied during adverse or non-optimal weather conditions for the
120 application method. Any weather condition, including heat, wind, or precipitation, that
121 minimizes the effectiveness of the herbicide or increases the exposure and/or potential
122 for drift to non-target vegetation, personnel, or objects will not be tolerated.
- 123 • Emphasis must be placed on ensuring the application will minimize exposure to people,
124 facilities and the surrounding environment. Avoid any non-target exposure.

125
126 A Nebraska Department of Agriculture licensed supervisor shall be designated by Contractor as the field
127 supervisor and remain onsite during all chemical application projects. The supervisor must be able to
128 correctly identify the targeted species. A representative from Program staff will meet with the licensed
129 supervisor at the beginning of each project to discuss treatment area and prescriptions and any special
130 restrictions. Contractor is required to provide Program staff with the following upon request by the Program
131 Land Manager:

- 132 • List of chemical herbicide trade names and the rates used to produce all chemical
133 mixtures applied. This list should also include any adjuvants or surfactants included in
134 the mixture.
- 135 • A “PRRIP Chemical Management Form” (Appendix C) is required after
136 completion of treatment on each individual infestation, local area, or workday depending
137 on time spent at a particular area.
- 138 • A map depicting estimated spray coverage area and GPS data of coverage area for the invoice.

139
140
141
142



143 **IV. PROGRAM LANDS**

144 Program lands are generally organized into approximately 1,000 to 3,000 acre blocks referred to as habitat
145 complexes. There are six habitat complexes distributed across the project area, containing the majority of
146 land (**Appendix D; Figure 1**). Additionally, there are 2 non-complex wetland sites that have been
147 associated with a complex. There are also two OCSW sites located within habitat complexes and three
148 stand-alone OCSW sites. For the purposes of this contracting process, the OCSW sites have been split in
149 to east and west groupings.

150

151 The following sections of the scope of work provide specific information about each habitat complex:

152

153 Plum Creek Complex

154 Contractors should be aware of the following points:

155

156 1. Plum Creek Complex is located less than 1 mile to the south of Interstate 80 between the towns of
157 Lexington and Overton, NE.

158

159 2. Plum Creek complex is approximately 722 acres, contains 2 tracts of land and is 2 miles long with the
160 majority of the land located on the south side of the Platte River. There is 1 additional wetland tract,
161 approximately 100 acres, located in close proximity to the southwest of the complex (**Figure 2**).

162

163 3. There is a 21 acre OCSW site located in the middle of Tract 2009003.

164

165 Cottonwood Ranch Complex

166 Contractors should be aware of the following points:

167

168 1. Cottonwood Ranch Complex is located less than 1 mile to the south of Interstate 80 between the towns
169 of Overton and Elm Creek, NE.

170

171 2. Cottonwood Ranch complex is approximately 3,528 acres, contains 3 tracts of land and is 4 miles long
172 with the majority of the land located on the south side of the main channel of the Platte River. There is 1
173 additional wetland tract, approximately 153 acres, located in close proximity to the northwest of the
174 complex (**Figure 3**).

175

176 3. There is a 16 acre OCSW site located in the middle of Tract 2008002.

177

178 Elm Creek Complex

179 Contractors should be aware of the following points:

180

181 1. Elm Creek Complex is located less than 1/4 mile to the south of Interstate 80 between the towns of Elm
182 Creek and Odessa, NE.

183

184 2. Elm Creek complex is approximately 1,302 acres, contains 5 tracts of land and is 2 miles long with 3
185 tracts being located on the north side of the Platte river and the others are located on the south side of the
186 Platte River (**Figure 4**).

187

188

189

190



191 Pawnee Complex

192 Contractors should be aware of the following points:

- 193
- 194 1. The Pawnee Complex is located less than 1/4 mile to the south of Interstate 80 between the towns of
195 Odessa and Kearney, NE.
 - 196
 - 197 2. The Pawnee complex is approximately 693 acres, contains 3 tracts of land and is 3 miles long. Two tracts
198 are located on the south side of the Platte River and one is on the north side (**Figure 5**).
 - 199
 - 200 3. There is a 17 acre OCSW site located at Tract 2010002.

201

202 Fort Kearny Complex

203 Contractors should be aware of the following points:

- 204
- 205 1. The Fort Kearny Complex is located less than 1/4 mile to the south of Interstate 80 and is located between
206 2 channels of the Platte River near the town of Kearney, NE and Highway 10.
 - 207
 - 208 2. The Fort Kearny complex is approximately 2,437 acres, contains 6 tracts of land and is 5 miles long
209 (**Figure 6**).
 - 210
 - 211 3. There is a 22 acre OCSW site located at Tract 2009008.

212

213 Shoemaker Island Complex

214 Contractors should be aware of the following points:

- 215
- 216 1. Shoemaker Island Complex is located less than 1/2 mile to the south of Interstate 80 between 2 channels
217 of the Platte River near the towns of Wood River and Alda, NE.
 - 218
 - 219 2. Shoemaker Island complex is approximately 1,834 acres, contains 3 tracts of land and is 3 miles long
220 (**Figure 7**).
 - 221
 - 222 3. There is a 16 acre OCSW site located in the middle of East Tract 2011001 and a 6 acre OCSW site
223 located on Tract 2011002.

224

225 OCSW Bare Ground West

- 226 1. OCSW Bare Ground West tracts are located to the south of Interstate 80 between the towns of Lexington
227 and Kearney, NE.
- 228
- 229 2. OCSW Bare Ground West contains 3 sites and is approximately 54 acres (**Figure 8**).

230

231 OCSW Bare Ground East

- 232 1. OCSW Bare Ground East tracts are located to the south of Interstate 80 between Highway 10- I-80
233 interchange and the town of Alda, NE.
- 234
- 235 2. OCSW Bare Ground West contains 3 tracts of land is approximately 40 acres (**Figure 9**).

236

237 NOTE: DETAILED MAPS WILL BE AVAILBLE UPON AWARDDING OF CONTRACT.

238



239 **V. BID ITEMS**

240 Contractors will submit mobilization and demobilization costs by habitat complex, per-hour rate of labor,
241 per-hour rate of equipment, and chemical cost mark up. Contractor compensation will be based on the
242 mobilization and demobilization cost, number of hours of labor and equipment use, and the quantity of
243 herbicides used to complete the work.

244
245
246 **VI. FIELD AND OFFICE EQUIPMENT**

247 Potential Contractors will own or acquire all field and office equipment and software required to provide
248 chemical application services.

249
250
251 **VII. CONTRACT TERMS**

252 The selected Contractor (s) will be retained by: Nebraska Community Foundation
253 PO Box 83107
254 Lincoln, NE 68501
255

256 The Contractor will be subject to (but not limited to) the following contract terms:
257

258 Certification/Training Requirements: Meet or exceed Nebraska Department of Agriculture herbicide
259 spraying certification and training requirements.
260

261 Insurance Requirements: If awarded, Contractor shall represent and guarantee that all employees, agents,
262 servants or representatives of Contractor, and all employees, agents, servants, or representatives of sub
263 consultants are covered by workers' compensation insurance as required by Nebraska Statute. Prior to
264 entering into contract with PRRIP, contractor shall furnish PRRIP with certificates of insurance, naming
265 PRRIP as named or additional insured without waiving any defense of sovereign immunity or increasing
266 the limits of PRRIP's liability in excess of Nebraska State Statute for item (3) below, providing evidence
267 that contractor has in full force and effect the following minimum insurance with insurers authorized to do
268 business in the State of Nebraska. The certificate of insurance shall also provide that PRRIP shall be notified
269 in writing by the carrier at least 30 days prior to any cancellation of said insurance.
270

- 271 1. Workers' compensation insurance as required above;
272
273 2. Motor vehicular liability insurance with limits of not less than \$1,000,000 combined single limit which
274 insurance shall be applicable to any and all vehicles utilized by contractor to provide the services requested
275 by PRRIP;
276
277 3. General liability insurance for all services rendered by contractor for the requested services with a
278 minimum of \$1,000,000 personal and advertising injury and \$1,000,000 general aggregate.
279
280
281
282
283
284
285
286



287
288
289
290
291
292
293
294
295
296
297
298
299
300
301
302
303
304
305
306
307
308
309
310

311
312
313
314
315
316
317
318
319
320
321
322
323
324

VIII. SUBMISSION REQUIREMENTS

All interested parties having experience providing the services listed in this RFB are requested to submit a bid.

Instructions for Submitting Bids

One original bid document supporting documentation must be submitted by mail to Tim Tunnell *no later than 12:00 PM Central Time Friday, March 3, 2017*. A bid is late if received after that time and will not be considered. Proposals should be submitted to:

Tim R. Tunnell, Senior Land Manager
Platte River Recovery Implementation Program
4111 4th Avenue, Suite 6
Kearney, NE 68845

Questions regarding the information contained in this RFB should be submitted by **email only** (no phone calls) to Tim Tunnell at tunnellt@headwaterscorp.com. A list of compiled Contractor questions and responses will be maintained on the Program web site (www.PlatteRiverProgram.org) in the same location as this RFB solicitation.

RFB Schedule

The ED Office expects to complete the selection process and award the work by approximately March 10, 2017. The following table represents the RFB schedule:

Description	Date	Time (Central)
Issue RFB	February 10, 2017	NA
Mandatory Pre-proposal meeting	February 17, 2017	1:00 PM
Last day for respondents to submit questions regarding the RFB	February 22, 2017	12:00 PM
Bids due from respondents	March 3, 2017	12:00 PM
Evaluation of bids	March 6, 2017 - March 10, 2017	
Award of Work	On March 10, 2017	
Start of Work	Approximately April 1	
Completion of Work	Approximately November 15	

Pre-Bid Meeting

A **mandatory** pre-bid meeting of interested parties will be held on February 17, 2017 from 1:00 to 2:00 p.m. Central Time at the PRRIP Conference room for the purpose of familiarizing the respondents with the work scope and requirements included herein before submitting a response to this RFB. The PRRIP conference room is located in the Eagle Nest Plaza at 4111 4th Avenue, Suite 6 in Kearney, NE 68845. Please email Tim Tunnell (tunnellt@headwaterscorp.com) with a list of people from your party expected to join in the pre-proposal meeting by 12:00 p.m. central time on February 15, 2017.

It is the Contractor’s responsibility, while at the pre-proposal meeting/conference call, to ask questions necessary to understand the RFB so the respondent can submit a proposal that is complete and in accordance with RFB requirements. There shall be no minutes distributed by the ED Office regarding the meeting.



325 Bid Content

326 Bids must include the following contents and documentation:

327

328 **1) General Information**

329

330 **2) Completed Bid Form** including identification of the habitat complexes and/or bare ground areas
331 (east/west) that the contractor is bidding on.

332

333 **3) Equipment list** that includes all equipment that would be mobilized for this project.

334

335 **4) References Names/address/telephone** of three clients who can attest to your experience as it relates to
336 the services you are proposing.

337

338 **5) Description of insurance** shall be provided with the proposal. Proof of insurance will be required
339 before a contract is issued. Minimum insurance requirements are described in Section VII.

340

341 **6) Affirmative statement** that neither the firm nor the principals of the firm are on the federal suspended
342 and disbarred list. If the firm has a DUNS number, please provide to assist in verification.

343

344 Criteria for Evaluating Bids

345 Bids will be evaluated and a Contractor selected based on the following principal considerations:

346

347 1. Price proposal.

348

349 2. Equipment availability.

350

351 3. References.

352

353 4. Insurance and affirmative statement.

354

355 The winning bid will be selected to best meet overall project objectives. Should the successful Contractor(s)
356 be unable at any time to accomplish the work they have been contracted for or meet any of the requirements
357 or standards listed in this Bid, the next ranked Contractor may be contacted to provide the required work.

358 Award Notice

359 After completing the evaluation of all bids, the Program will select a Contractor. If the Program is unable
360 to negotiate a mutually satisfactory contract with a Contractor, it may, at its sole discretion, cancel and
361 reissue a new RFB.

362

363 Program Perspective

364 The Program GC has the sole discretion and reserves the right to reject any and all bids received in response
365 to this RFB and to cancel this solicitation if it is deemed in the best interest of the Program to do so. Issuance
366 of this RFB in no way constitutes a commitment by the Program to award a contract, or to pay Contractor's
367 costs incurred either in the preparation of a response to his RFB or during negotiations, if any, of a contract
368 for services. The Program also reserves the right to make amendments to this RFB by giving written notice
369 to Contractors, and to request clarification, supplements, and additions to the information provided by a
370 Contractor.

371

372 By submitting a bid in response to this solicitation, Contractors understand and agree that any selection of
373 a Contractor or any decision to reject any or all responses or to establish no contracts shall be at the sole
374 discretion of the Program. To the extent authorized by law, the Contractor shall indemnify, save, and hold
375 harmless the Nebraska Community Foundation, the states of Colorado, Wyoming, and Nebraska, the



373 Department of the Interior, members of the GC, and the ED Office, their employees, employers, and agents,
374 against any and all claims, damages, liability, and court awards including costs, expenses, and attorney fees
375 incurred as a result of any act or omission by the Contractor or its employees, agents, sub-Contractors, or
376 assignees pursuant to the terms of this project. Additionally, by submitting a proposal, Contractor agrees
377 that they waive any claim for the recovery of any costs or expenses incurred in preparing and submitting a
378 proposal.
379

379

380 **IX. BID RESPONSE FORMS**

381 The following forms are to be submitted as part of Contractor proposals.



382 **PART I: GENERAL INFORMATION**

Company Name:	Telephone Number:	Fax Number:
Mailing Address:	City, State, Zip Code:	
Physical Address:	City, State, Zip Code:	
Name of Contact:	Telephone Number:	E-mail Address & Company web address
Business Type: <input type="checkbox"/> Corporation <input type="checkbox"/> Partnership <input type="checkbox"/> Individual <input type="checkbox"/> Consolidated Company		
Status: <input type="checkbox"/> Prime Contractor <input type="checkbox"/> Subcontractor	Federal Tax ID:	
Number of Employees (at peak):	Age of Firm:	Insurance Limit:

383



384 **PART II: PLATTE RIVER RECOVERY IMPLEMENTATION PROGRAM**

385

386

2017 CHEMICAL APPLICATION SERVICES

387

LABOR & EQUIPMENT COST RATE:

388

389 Please identify which Habitat Complex you are interested in providing Chemical Application
390 Services:

391

Bare Ground

Bare Ground

392 Noxious Weed Sites:

Sites West:

Sites East:

393 Plum Creek Complex

Tract 2009003

Tract 2009008

394 Cottonwood Ranch Complex

Tract 2008002

Tract 2011001

395 Elm Creek Complex

Tract 2010002

Tract 2011002

396 Pawnee Complex

397 Fort Kearny Complex

398 Shoemaker Island Complex

399

400 The Contractor is required to submit unit prices for all work Items below that apply to the proposal:

Item No.	Description	Unit	Unit Price
----------	-------------	------	------------

001 Mobilization and Demobilization¹

Plum Creek Complex LS \$ _____

Cottonwood Ranch Complex LS \$ _____

Elm Creek Complex LS \$ _____

Pawnee Complex LS \$ _____

Ft. Kearny Complex LS \$ _____

Shoemaker Island Complex LS \$ _____

Bare Ground Sites West LS \$ _____

Bare Ground Sites East LS \$ _____

002 Chemical Application-Labor² HR \$ _____

003 Chemical Application-Equipment³

004 Chemical Application-Spray Truck HR \$ _____

005 Chemical Application-ATV HR \$ _____

006 Chemical Application-UTV/Argo HR \$ _____

007 Chemical Application-Airboat HR \$ _____

401 Chemical Cost Markup⁴: Yes/ No Percent: _____

402

¹ Lump sum rate for mobilization and demobilization per site and per year of service.

² Per-hour rate for chemical application or labor required to complete the work.

³ Per-hour rates for equipment required to complete the work.

⁴ Chemical will be reimbursed based on use and mark-up.



403 PART III: List equipment that is available to complete work.

404

Quantity	Item* (Description, Size, Capacity. Etc.)	Present Location

405

406

407 **GPS Capability? Yes/No**

408

409 **Preferred Chemical for Bare Ground:**

410

411 _____

412

413 _____

414

415 _____

416

417 _____

418

419 _____

420

421

422 **Preferred Chemical for Noxious Weeds:**

423

424 _____

425

426 _____

427

428 _____

429

430 _____

431

432 _____

433

434



435 **PART IV: PLATTE RIVER RECOVERY IMPLEMENTATION PROGRAM**

436

437

REFERENCES:

438

439

(Names/address/telephone of three clients who can attest to your experience
as it relates to the services you are proposing.)

440

441

442

443

FIRM NAME: _____

444

ADDRESS: _____

445

CONTACT PERSON: _____

446

TELEPHONE: _____

447

EMAIL: _____

448

FAX: _____

449

450

451

452

FIRM NAME: _____

453

ADDRESS: _____

454

CONTACT PERSON: _____

455

TELEPHONE: _____

456

EMAIL: _____

457

FAX: _____

458

459

460

461

FIRM NAME: _____

462

ADDRESS: _____

463

CONTACT PERSON: _____

464

TELEPHONE: _____

465

EMAIL: _____

466

FAX: _____

467

468

469



470
471
472
473

Appendix A

NEBRASKA NOXIOUS WEEDS

- 474 • Saltcedar (*Tamirix* spp.)
- 475 • Purple Loosetrife (*Lythrum salicaria* L.)
- 476 • Phragmites (*Phragmites australis*)
- 477 • Leafy Spurge (*Euphorbia esula* L.)
- 478 • Canada Thistle (*Cirsium arvense* L.)
- 479 • Musk Thistle (*Carduus nutans* L.)
- 480 • Plumless Thistle (*Carduus acanthoides*)
- 481 • Spotted (*Centaurea stoebe*) and Diffuse (*Centaurea diffusa*) Knapweed
- 482 • Japanese (*Fallopia japonica*), Giant (*Fallopia sachalinensis*) and Bohemian (*Fallopia*
- 483 *bohemica*) Knotweed
- 484 • Sericea Lespedeza (*Lespedeza cuneata*)

**Appendix B****NEBRASKA INVASIVE WEED WATCH LIST**485
486
487
488
489

490 Invasive Plants Watch List: Mixedgrass Prairie Ecoregion (Adams, Boyd, Buffalo, Custer,
491 Dawson, Franklin, Frontier, Furnas, Gosper, Greeley, Hall, Harlan, Hayes, Hitchcock, Howard,
492 Kearney, Keya Paha, Nuckolls, Phelps, Red Willow, Sherman, Valley, Webster)

493

494 Future Invasive Species:

495 Giant reed *Arundo donax* L.
496 Oriental bittersweet *Celastrus orbiculatus*
497 Water hyacinth *Eichhornia crassipes*
498 Hydrilla *Hydrilla verticillata*
499 Brittle naiad *Najas minor*
500 Giant salvinia *Salvinia molesta*

501

502 Priority Species:

503 Amur maple *Acer ginnala*
504 Russian knapweed *Acrotilon repens*
505 Garlic mustard *Allaria petiolata*
506 Australian beardgrass
507 (Caucasian bluestem) *Bothriochloa bladhii* (*Andropogon bladhii*)
508 Cutleaf teasel *Dipsacus laciniatus*
509 European alder-
510 buckthorn *Frangula alnus*
511 Japanese honeysuckle *Lonicera japonica*, *morrowii*, *morrowii* x *tatarica* (also Morrow, Showy
512 Fly) *Myriophyllum spicatum* Eurasian water-milfoil
513 Sulphur cinquefoil *Potentilla recta* L.
514 Yellow-flag Iris *Iris pseudacorus*



515
516
517
518
519
520
521
522
523
524
525
526
527
528
529
530
531
532
533

534
535
536
537
538
539
540
541
542
543
544
545
546
547
548
549
550

Appendix C
PRRIP Chemical Management Form
(Must Accompany Invoice for Payment)

Date _____

Complex _____ Tract _____ Start Time _____ End Time _____

Contract Company Name _____ Licensed Supervisor Name _____

Weather Conditions:

Wind Speed: _____ mph Wind Direction: _____ Temperature: _____ °F

(Circle)

Sunny Partly Cloudy Cloudy Rain Cloud Cover: _____ %

(Circle)

Bare Ground Thistle Leafy Spurge Phragmites Purple Loosetrife Tree/Brush _____

Other _____ Other _____ Other _____ Other _____ Other _____

App Date	App Hrs	Equip Used	Target Spp.	Herbicide	Rate	Adjuvant/Oil	Mix	Gallons Herbicide	Adj	

Comments: _____

Follow-up

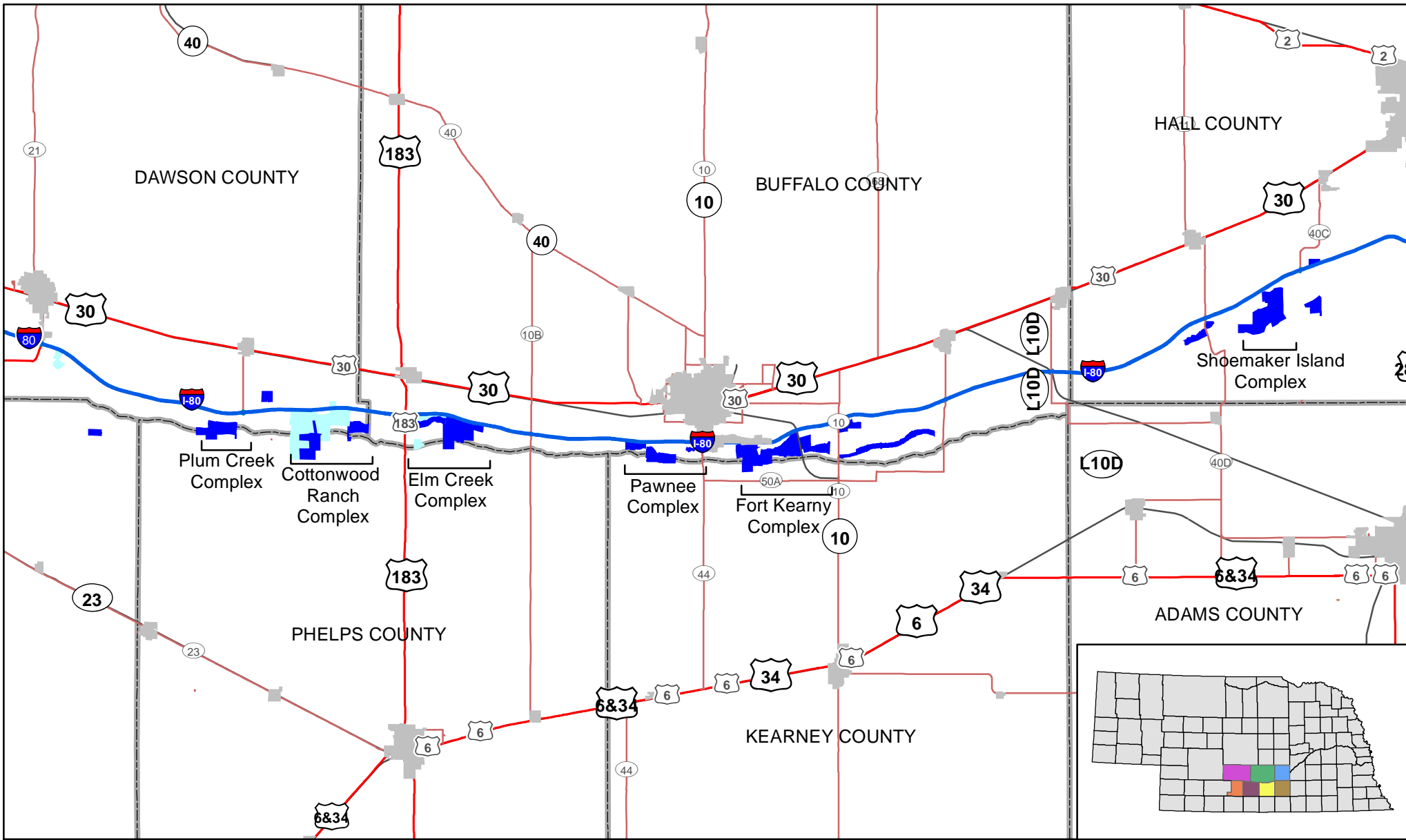
Comments _____





Identify Coverage Area on Map/ Provide GPS data

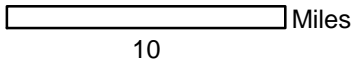


551
552

Appendix D
Figures



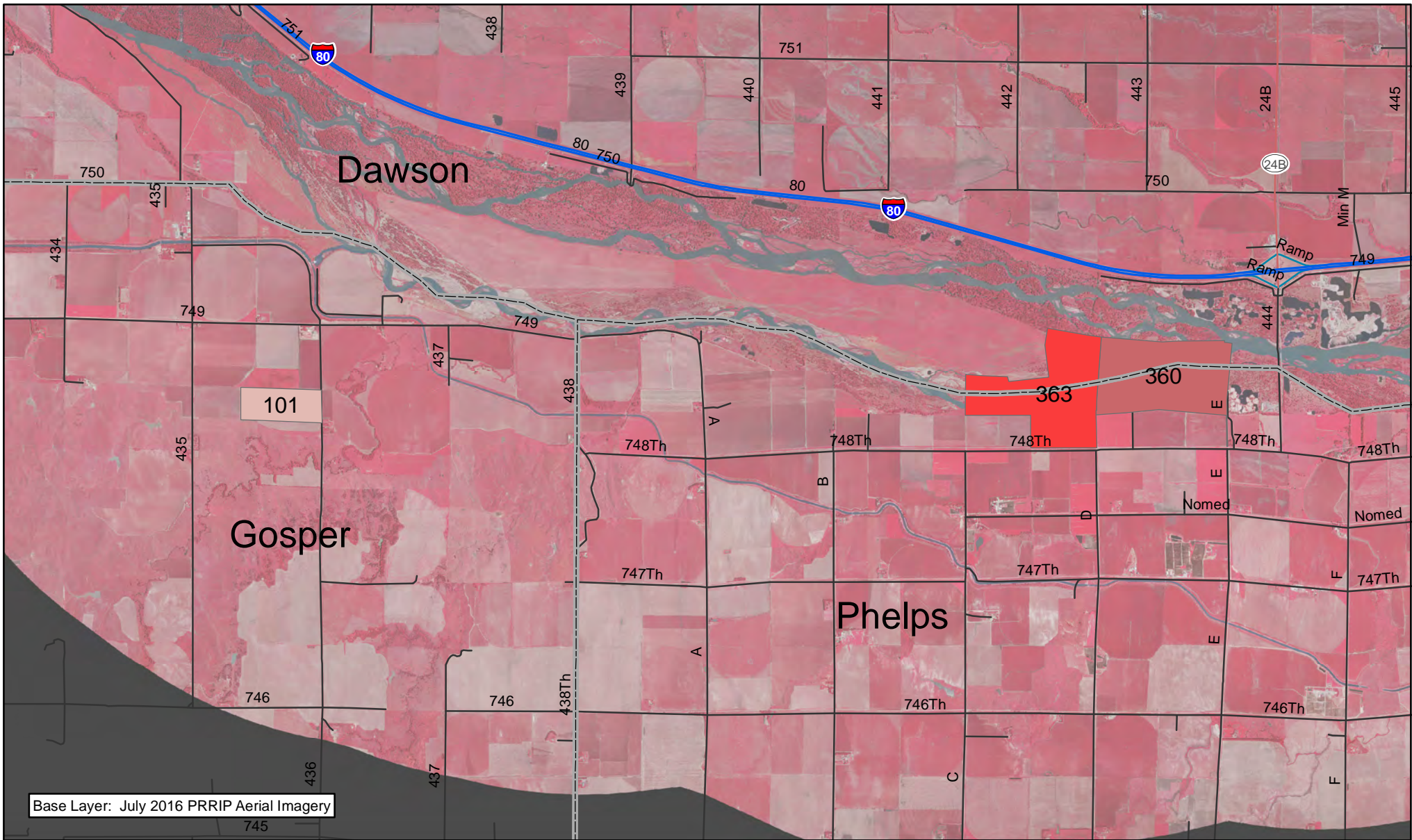
- Legend**
-  nebraska_counties_14
 -  nebraska_cities_14
 - Conservation_Lands**
 - OWNERSHIP**
 -  NPPD
 -  PRRIP



**HABITAT COMPLEXES
CHEMICAL
APPLICATION
SERVICES**

Date: 01/19/2017
By: TRT

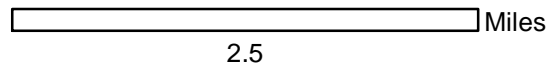
Figure 1



Legend

PRRIPTractNum

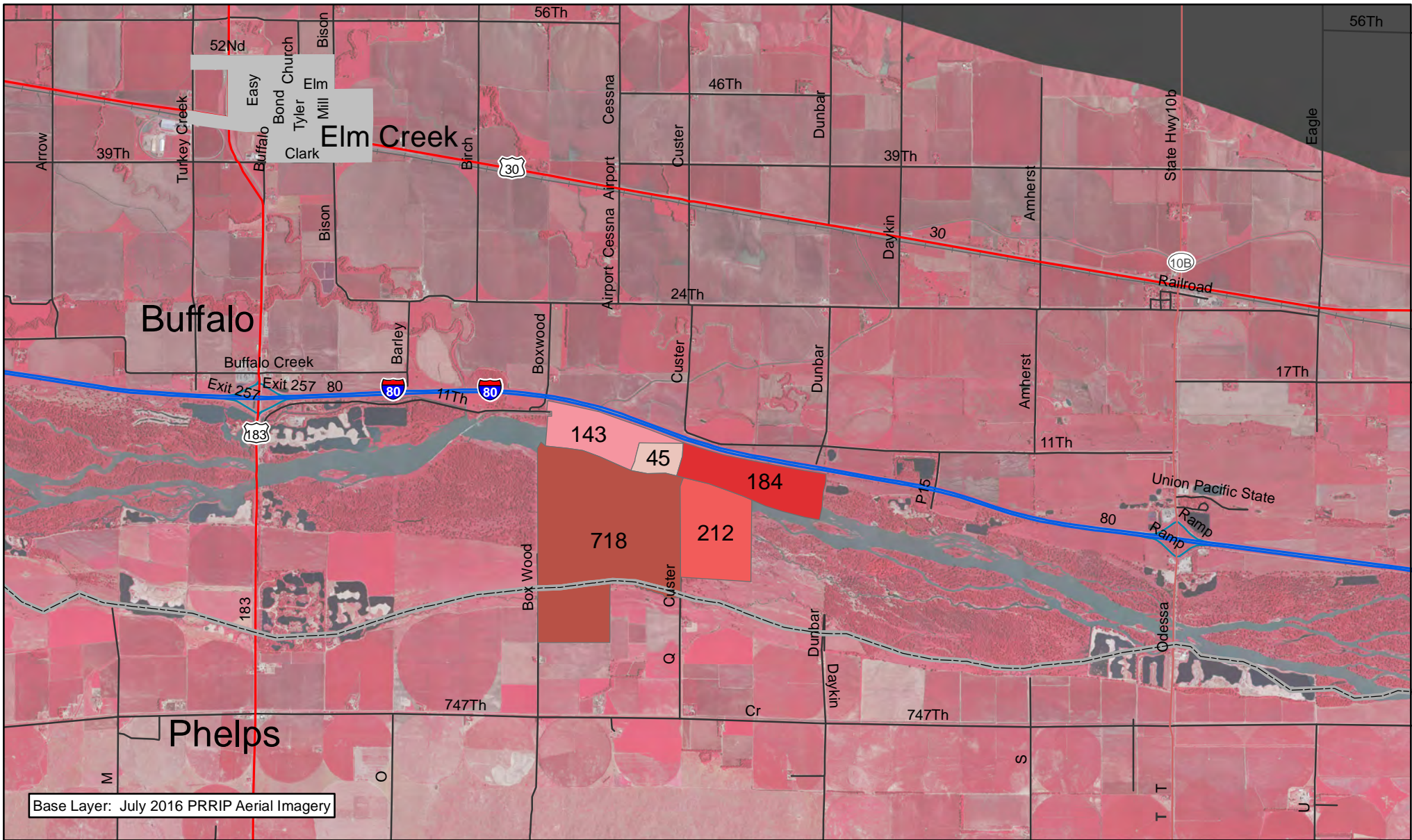
- 2009003
- 2009007
- 2012004



PLUM CREEK COMPLEX

Date: 01/19/2017
By: TRT

Figure 2



Base Layer: July 2016 PRRIP Aerial Imagery

Legend

PRRIP Tract

- 2009002
- 2009005
- 2012001
- 2012002
- 2015003

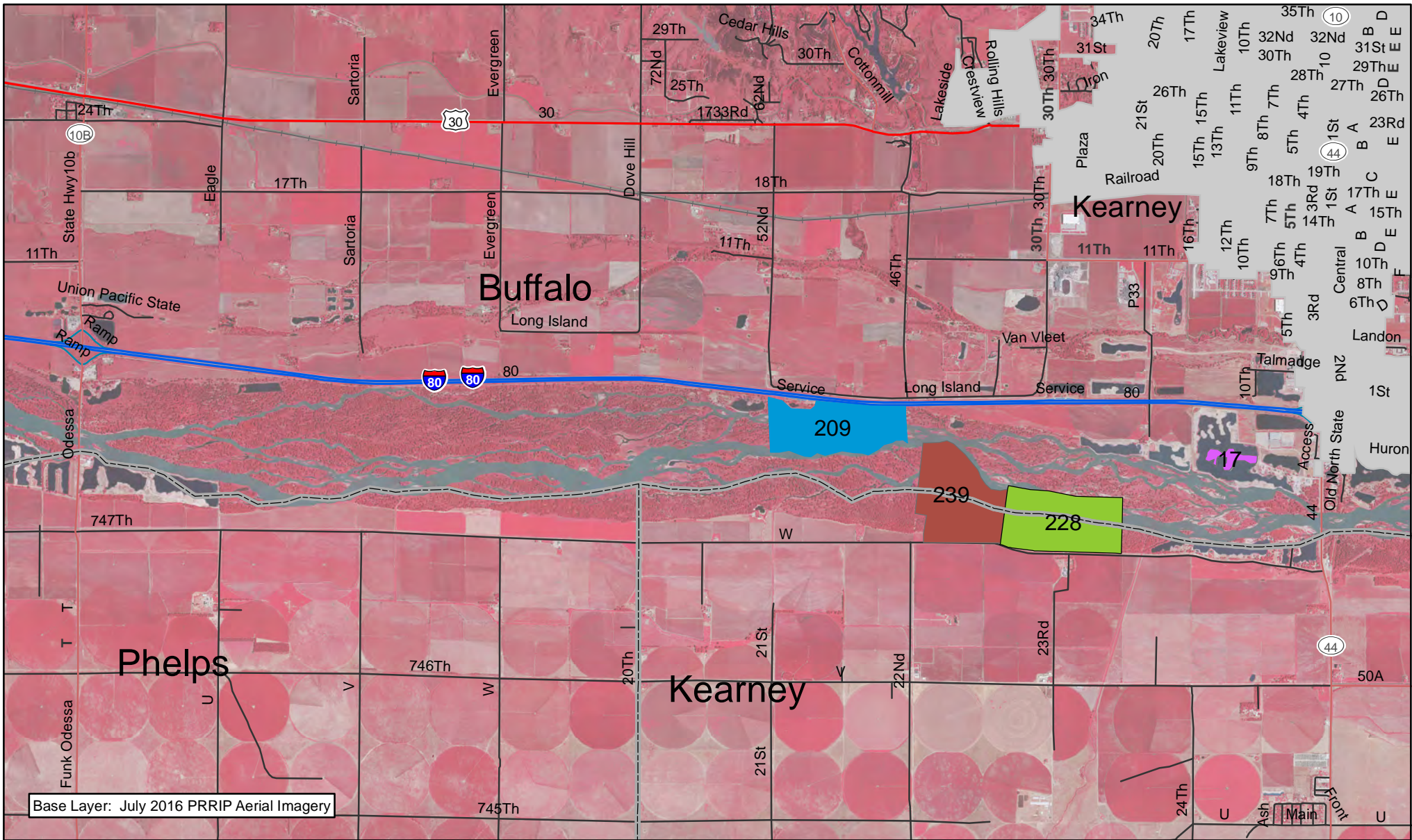


2 Miles

**ELM CREEK
COMPLEX**

Date: 01/19/2017
By: TRT

Figure 4



Legend

Conservation_Lands
PRRIPTractNum

- DOR
- 2015002
- 2014002
- 2010002

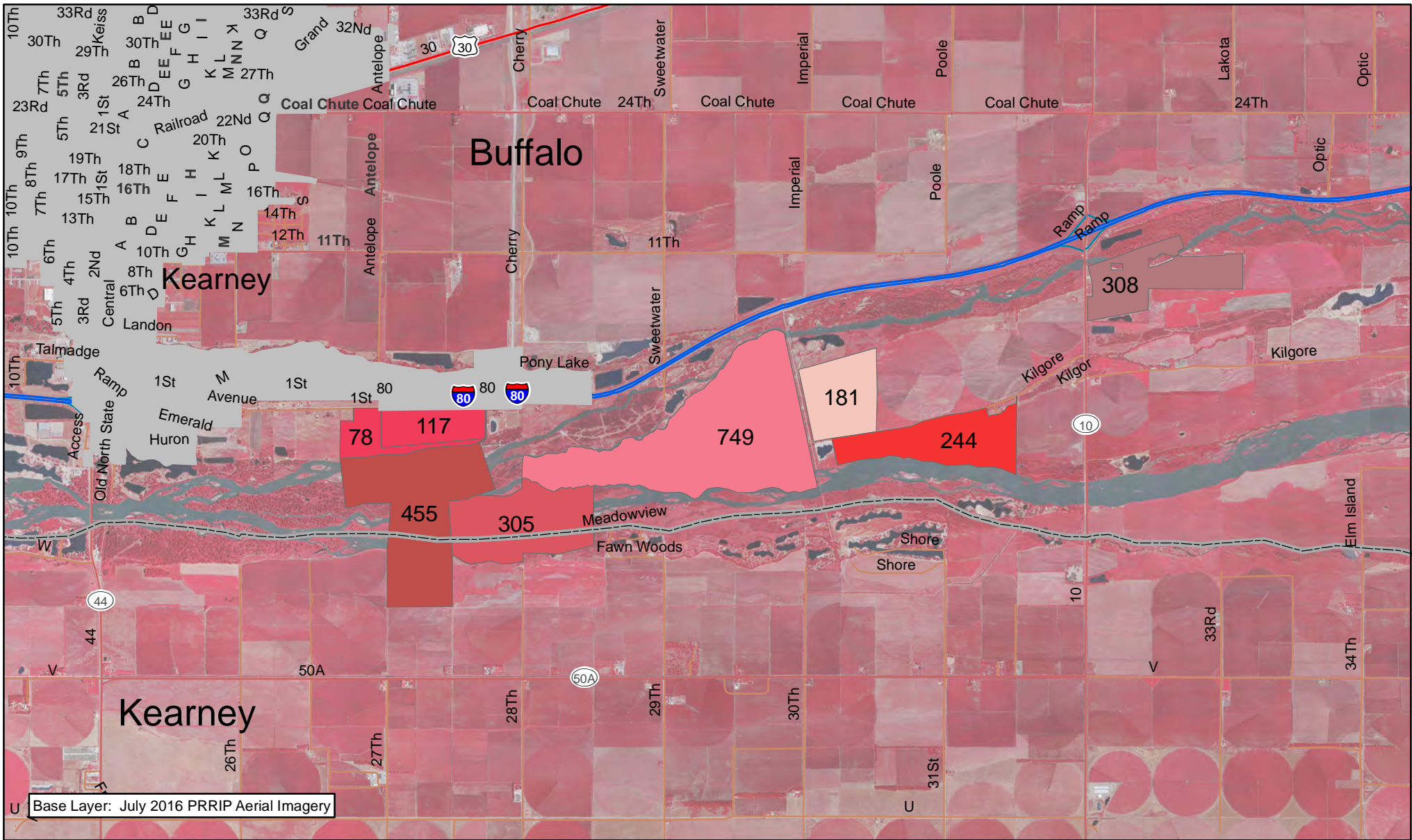


2.5 Miles

PAWNEE
COMPLEX

Date: 01/19/2017
By: TRT

Figure 5



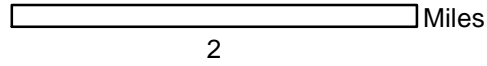
Base Layer: July 2016 PRRIP Aerial Imagery

Legend

Conservation_lands

PRRIPTract

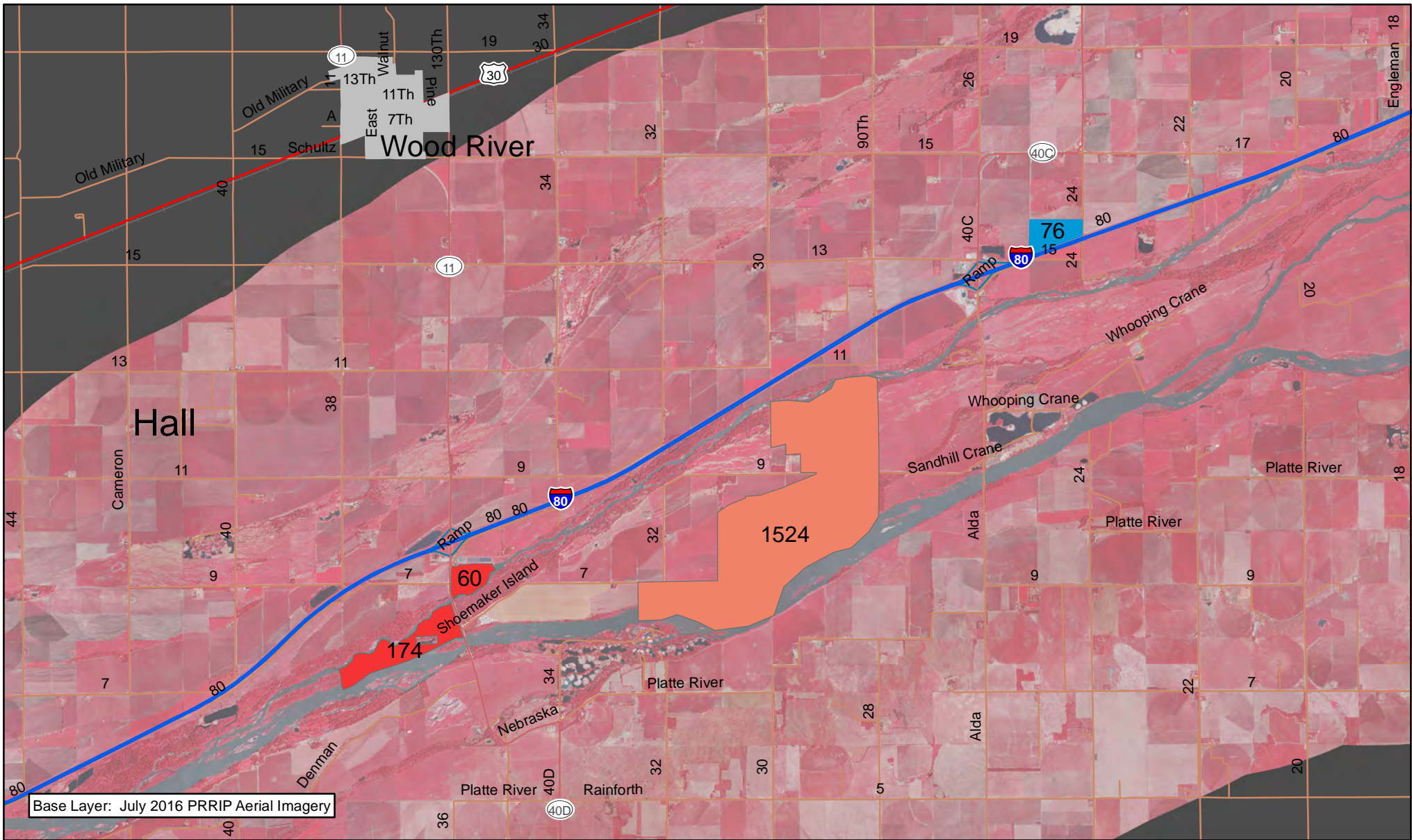
	2008001
	2009001
	2009004
	2009008
	2010003
	2012003
	2015001



**FORT KEARNY
COMPLEX**

Date: 01/19/2017
By: TRT

Figure 6



Base Layer: July 2016 PRRIP Aerial Imagery

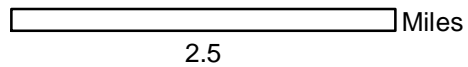


Legend

Conservation_lands

PRRIPTract

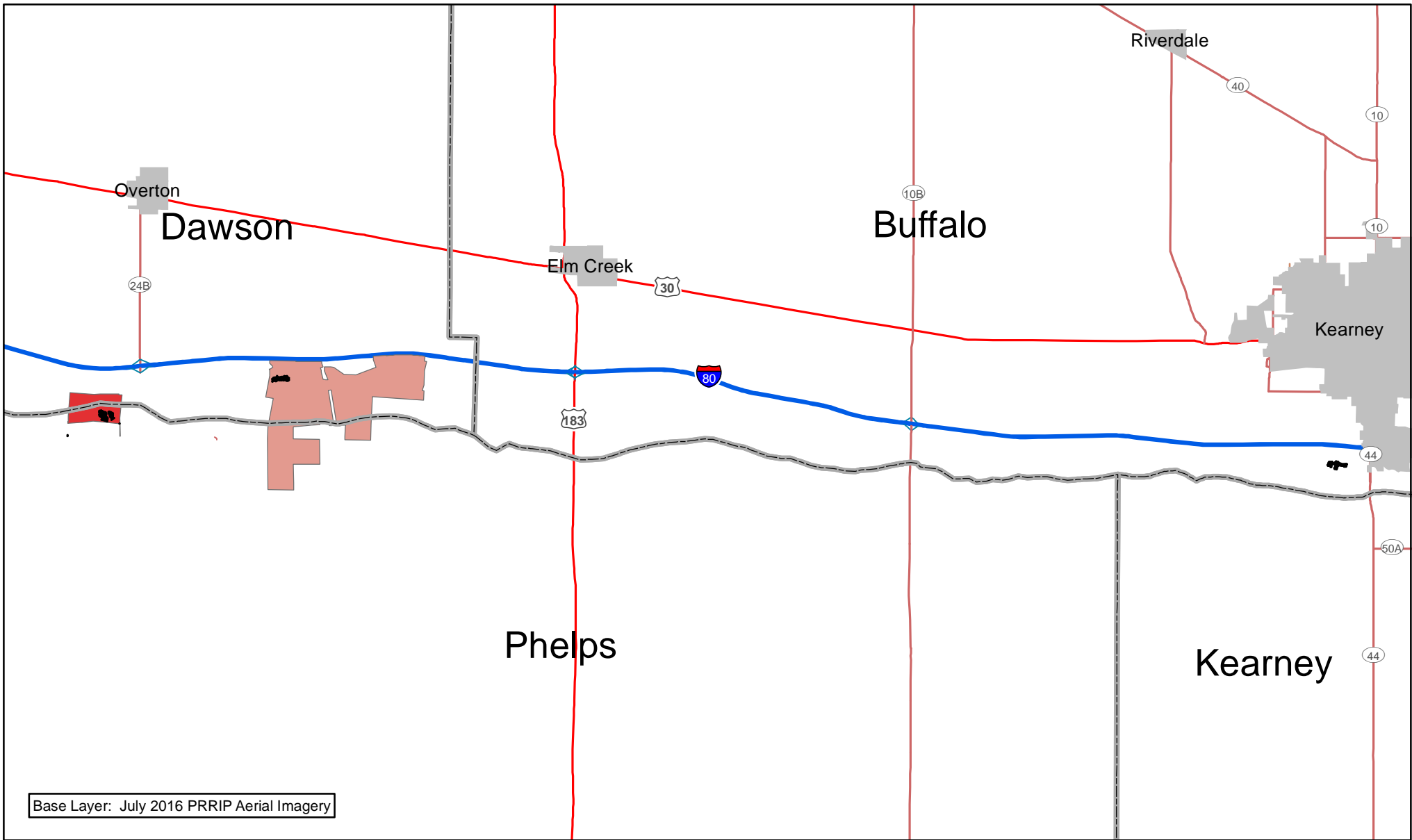
- 2010004
- 2011001
- 2011002



**SHOEMAKER ISLAND
COMPLEX**

Date: 01/19/2017
By: TRT

Figure 7



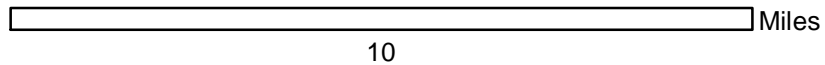
Base Layer: July 2016 PRRIP Aerial Imagery



Legend

PRRIPTractNum

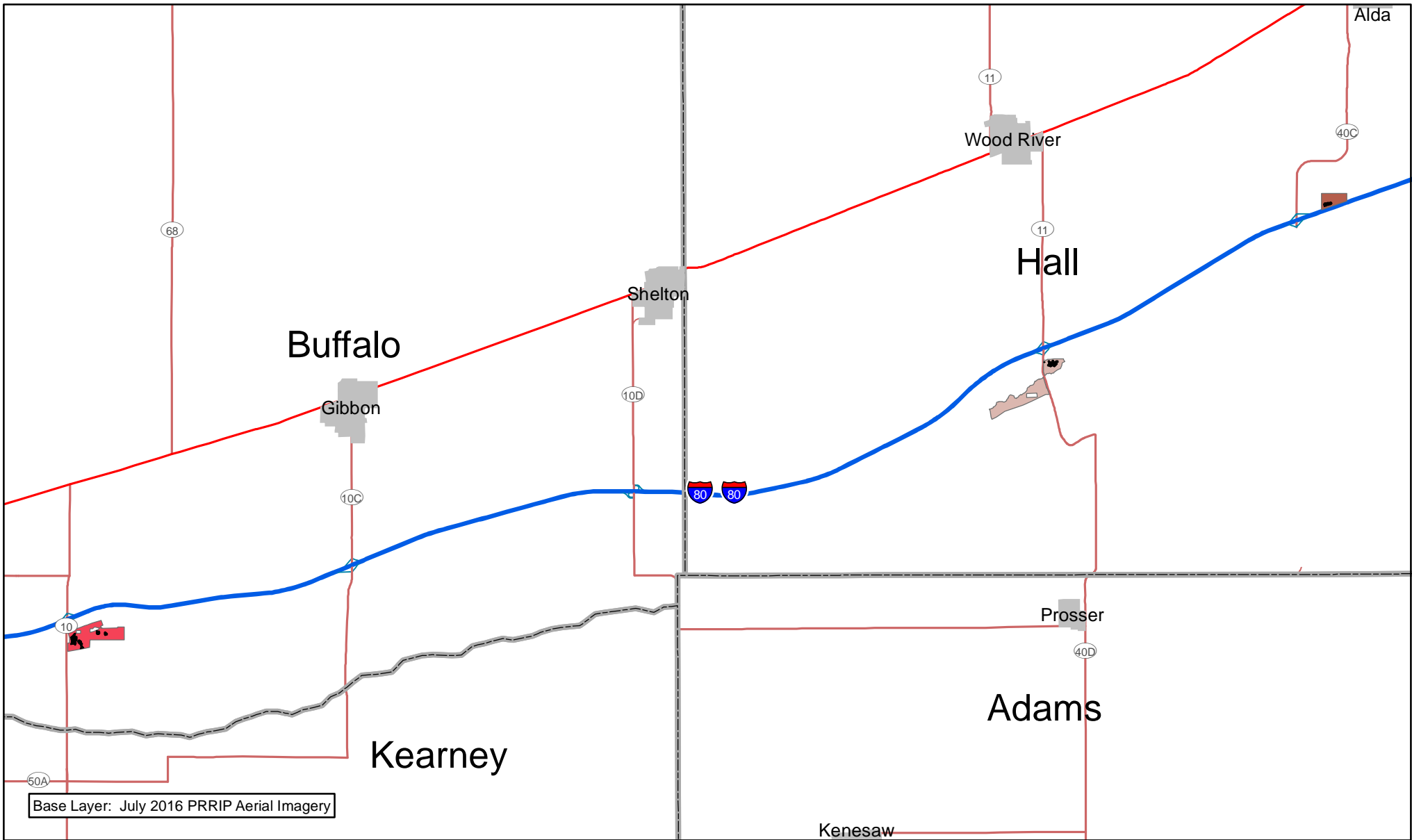
- 2008002
- 2009003
- 2010002



OCSW BARE GROUND
WEST

Date: 01/19/2017
By: TRT

Figure 8



Base Layer: July 2016 PRRIP Aerial Imagery



Legend

PRRIPTractNum

- 2009008
- 2011001
- 2011002



10 Miles

10

OCSW BARE GROUND
WEST

Date: 01/19/2017
By: TRT

Figure 8