



REQUEST FOR BIDS (RFB)

2018 Chemical Application Services

PLATTE RIVER RECOVERY IMPLEMENTATION PROGRAM

Office of the Executive Director

4111 4th Avenue, Suite 6

Kearney, Nebraska 68845

February 1, 2018



Contents

I. OVERVIEW 3

II. WORK DESCRIPTION & SCOPE OF WORK..... 3

III. CHEMICAL APPLICATION TIMING AND PERFORMANCE 4

IV. PROGRAM LANDS 6

V. BID ITEMS..... 8

VI. FIELD AND OFFICE EQUIPMENT 8

VII. CONTRACT TERMS..... 8

VIII. SUBMISSION REQUIREMENTS 9

IX. BID RESPONSE FORMS 11

Appendix A – Nebraska Noxious Weed List

Appendix B – Nebraska Invasive Weed Watch List

Appendix C –Chemical Management Form

Appendix D – Figures



**PLATTE RIVER RECOVERY IMPLEMENTATION PROGRAM
REQUEST FOR BIDS (RFB)**

SUBJECT: 2018 Chemical Application Services
REQUEST DATE: February 2, 2018
PRE-BID MEETING: February 16, 2018 – 1:00 pm CST
CLOSING DATE: February 23, 2018 – 5:00 pm CST
POINT OF CONTACT: Tim R. Tunnell, Senior Land Manager
Headwaters Corporation
tunnellt@headwaterscorp.com

I. OVERVIEW

The Platte River Recovery Implementation Program (“Program” or “PRRIP”) was initiated on January 1, 2007 between Nebraska, Wyoming, Colorado, and the Department of the Interior to address threatened and endangered species issues in the central and lower Platte River basin. The species considered in the Program, referred to as “target species”, are the whooping crane, piping plover, interior least tern, and pallid sturgeon.

A Governance Committee (GC) reviews, directs, and provides oversight for Program activities. The GC is comprised of one representative from each of the three states, three water user representatives, two representatives from environmental groups, and two members representing federal agencies. The GC has named Dr. Jerry Kenny to serve as the Program Executive Director (ED). Dr. Kenny established Headwaters Corporation as the staffing mechanism for the Program. Program staff are located in Nebraska and Colorado and are responsible for assisting in carrying out Program-related activities.

One of the major components of Program implementation is acquisition and management of 10,000 acres of habitat for the benefit of the target species. To date, approximately 12,500 acres have been acquired and are being managed by the Program’s Executive Director’s Office (EDO) Staff. The purpose of this request is to obtain qualified and licensed contractors to provide Chemical Application Services efficiently, effectively and in a timely manner to treat noxious and invasive weeds in Program owned and/or managed grasslands and maintain bare ground at off-channel sand and water nesting areas (OCSW) for target species. **As such, the GC is requesting bids from qualified contractors for 2018 chemical application services to be performed starting April 1 and ending on or around November 15, 2018.**

II. WORK DESCRIPTION & SCOPE OF WORK

Work Description

The Program is requesting bids from experienced contractors for chemical application services in 2018. All applicators must be certified with the Nebraska Department of Agriculture as a Commercial Applicator, categories needed are: General, Ag. Plant and Aquatic. The performance period will begin on April 1 and will end on or around November 15, 2018. Bare ground treatments on OCSW sites will require two applications; one application in late spring- typically April 1-April 15 prior to nest initiation of target species and a follow-up application in late summer after all chicks have fledged- typically August 15-September 1. Control of noxious weeds in Program owned and/or managed grassland sites will typically require 3-4 trips, as needed, through sites during the year. Generally, trips will be in the early spring, early summer, late summer, and fall prior to first frost.

**48 Scope of Work**

49 The Contractor must have sufficient availability to fully utilize weather windows for chemical applications
50 at Program lands which are distributed along a 60-mile reach of the Platte River in central Nebraska. The
51 Contractor will be responsible for all labor, materials, equipment, tools, transportation and supplies required
52 to complete the work. All applicators must be certified with the Nebraska Department of Agriculture as a
53 Commercial Applicator, categories needed are: General, Ag. Plant and Aquatic.

54
55 Bare ground treatments on OCSW sites will require one application in late spring- typically April 1-April
56 15 prior to nest initiation of target species and a follow-up application in late summer after all chicks have
57 fledged- typically August 15-September 1. Areas will require broadcast spraying to ensure full spray
58 coverage to the water's edge with both spring and fall applications. Equipment and spraying operations
59 shall minimize rutting and ground surface disturbance. *Close communication between Program staff and*
60 *contractors must occur in order to avoid conflicts with spraying and target species. It is the responsibility*
61 *of the Contractor to coordinate with Program staff on the status of use of target species prior to mobilization*
62 *to the site for spraying.*

63
64 Noxious weed control will typically require 3-4 trips, as needed, through grassland sites during the year.
65 Generally, trips will be in the early spring, early summer, late summer, and fall prior to first frost. A list of
66 state of Nebraska noxious weed and Watch list species can be found in Appendix A and B.

67
68 III. CHEMICAL APPLICATION TIMING AND PERFORMANCE

69 Contractor will be ready to begin work as soon as contract is signed. Contractor will proceed to complete
70 all the work as quickly and efficiently as possible while maintaining the quality standards listed in the Scope
71 of Work. The Program Land Manager may stop work and order the removal and/or replacement of any
72 equipment if the equipment is not working or calibrated properly. Contractor then has 48 hours to replace
73 the equipment with an acceptable substitute and remove the inadequate equipment. The Program Land
74 Manager may prohibit chemical application during adverse weather conditions (heat, cold, dry, wet, etc.).
75 If adverse weather is a problem, Contractor must furnish additional personnel and equipment to make up
76 for lost time and ensure timely completion.

77
78 Contractor must guarantee a minimum of 100% coverage of the bare ground treatment areas and at least
79 95% mortality of targeted vegetation within the areas. Acceptable coverage will be determined within five
80 days of application using several random spot inspections. Contractors are required to use marking dye to
81 help with this process. Signs of mortality will be documented at random spot inspection sites beginning
82 three weeks following application. If coverage and/or mortality rates are not met, the Program may require
83 Contractor to retreat the areas at Contractor's expense and at no additional cost to the Program. No chemical
84 herbicide applications will exceed the label rates on the herbicide containers. All requirements, including
85 state and/or local requirements, listed on the herbicide label are to be followed. Failure to comply with label
86 instructions is a violation of federal and/or state laws. Contractor is liable for any penalty, fines, or damages
87 resulting from misuse of herbicides. Unless otherwise specified, Contractor will supply and apply all
88 chemical herbicides, adjuvants, and other materials to ensure an effective kill of the target vegetation and
89 will be reimbursed for the chemical used.

90
91 Contractor is expected to minimize broadcast spraying and use spot-spraying as primary control method of
92 noxious and invasive weeds. However, broadcast spraying is allowable when infestations are larger than
93 0.25 acre. Contractor is expected to prevent overspray, drift, and/or nontarget damage to surrounding
94 vegetation, open water, structures, and/or facilities. No less than 100% of all target vegetation must be



95 treated, and no less than 95% of the treated vegetation must be killed for the control method to be considered
96 acceptable by the Program.

97
98 The Program is implementing a “Come Clean, Leave Clean” standard. All equipment used on Program
99 lands, including tractors, ATVs, UTVs, trucks, trailers, and/or Argos need to be free of any plant material.
100 The Program Land Manager will delineate a designated cleaning area on each tract for contractors to clean
101 their equipment.

102
103 The licensed supervisor is responsible to ensure the following:

- 104 • Chemical pesticides must be kept in original containers until mixing. All mixtures should
105 have temporary labels that list the trade name and rates of chemicals and any adjuvants
106 within the spray container.
- 107 • The licensed supervisor must readily have available during application copies of all
108 chemical pesticides labels and Material Safety Data Sheets (MSDS) that are being
109 applied.
- 110 • During mixing and application, all recommended Personal Protective Equipment (PPE)
111 will be properly worn to minimize applicator exposure to chemicals. All measuring cups
112 should be rinsed and the effluent poured into the tank/bottle mixture.
- 113 • Chemicals and any rinse material from chemical containers will be applied to specific
114 areas; run-off of any chemical substance is not acceptable.
- 115 • Herbicides that are mixed, transferred, or temporarily stored while on Program lands will
116 be done so at designated staging areas. Any and all containers that contain pesticide or
117 pesticide residues will be removed from Program lands once the chemical application is
118 complete.
- 119 • Herbicides will not be applied during adverse or non-optimal weather conditions for the
120 application method. Any weather condition, including heat, wind, or precipitation, that
121 minimizes the effectiveness of the herbicide or increases the exposure and/or potential
122 for drift to non-target vegetation, personnel, or objects will not be tolerated.
- 123 • Emphasis must be placed on ensuring the application will minimize exposure to people,
124 facilities and the surrounding environment. Avoid any non-target exposure.

125
126 A Nebraska Department of Agriculture licensed supervisor shall be designated by Contractor as the field
127 supervisor and remain onsite during all chemical application projects. The supervisor must be able to
128 correctly identify the targeted species. A representative from Program staff will meet with the licensed
129 supervisor at the beginning of each project to discuss treatment area and prescriptions and any special
130 restrictions. Contractor is required to provide Program staff with the following upon request by the Program
131 Land Manager:

- 132
133
134 • List of chemical herbicide trade names and the rates used to produce all chemical
135 mixtures applied. This list should also include any adjuvants or surfactants included in
136 the mixture.
- 137 • A “PRRIP Chemical Management Form” (Appendix C) is required after
138 completion of treatment on each individual infestation, local area, or workday depending
139 on time spent at a particular area.
- 140 • A map depicting estimated spray coverage area and GPS data of coverage area for the invoice.

141
142



143 **IV. PROGRAM LANDS**

144 Program lands are generally organized into approximately 1,000 to 3,000 acre blocks referred to as habitat
145 complexes. There are seven habitat complexes distributed across the project area, containing the majority
146 of land (**Appendix D; Figure 1**). Additionally, there are 2 non-complex wetland sites that have been
147 associated with a complex. There are also two OCSW sites located within habitat complexes and three
148 stand-alone OCSW sites. For the purposes of this contracting process, the OCSW sites have been split in
149 to east and west groupings.

150
151 The following sections of the scope of work provide specific information about each habitat complex:

152
153 Plum Creek Complex

154 Contractors should be aware of the following points:

- 155
156 1. Plum Creek Complex is located less than 1 mile to the south of Interstate 80 between the towns of
157 Lexington and Overton, NE.
- 158
159 2. Plum Creek complex is approximately 722 acres, contains 2 tracts of land and is 2 miles long with the
160 majority of the land located on the south side of the Platte River. There is 1 additional wetland tract,
161 approximately 100 acres, located in close proximity to the southwest of the complex (**Figure 2**).
- 162
163 3. There is a 21 acre OCSW site located in the middle of Tract 2009003.

164
165 Cottonwood Ranch Complex

166 Contractors should be aware of the following points:

- 167
168 1. Cottonwood Ranch Complex is located less than 1 mile to the south of Interstate 80 between the towns
169 of Overton and Elm Creek, NE.
- 170
171 2. Cottonwood Ranch complex is approximately 3,528 acres with an additional 530 acres of water project
172 property, contains 7 tracts of land and is 5 miles long with the majority of the land located on the south side
173 of the main channel of the Platte River. There is 1 additional wetland tract, approximately 153 acres, located
174 in close proximity to the northwest of the complex (**Figure 3**).
- 175
176 3. There is a 16 acre OCSW site located in the middle of Tract 2008002.

177
178 Elm Creek Complex

179 Contractors should be aware of the following points:

- 180
181 1. Elm Creek Complex is located less than 1/4 mile to the south of Interstate 80 between the towns of Elm
182 Creek and Odessa, NE.
- 183
184 2. Elm Creek complex is approximately 1,302 acres, contains 5 tracts of land and is 2 miles long with 3
185 tracts being located on the north side of the Platte river and the others are located on the south side of the
186 Platte River (**Figure 4**).

187
188
189
190



191 Pawnee Complex

192 Contractors should be aware of the following points:

- 193
- 194 1. The Pawnee Complex is located less than 1/4 mile to the south of Interstate 80 between the towns of
195 Odessa and Kearney, NE.
 - 196
 - 197 2. The Pawnee complex is approximately 693 acres, contains 3 tracts of land and is 3 miles long. Two tracts
198 are located on the south side of the Platte River and one is on the north side (**Figure 5**).
 - 199
 - 200 3. There is a 17 acre OCSW site located at Tract 2010002.

201

202 Fort Kearny Complex

203 Contractors should be aware of the following points:

- 204
- 205 1. The Fort Kearny Complex is located less than 1/4 mile to the south of Interstate 80 and is located between
206 2 channels of the Platte River near the town of Kearney, NE and Highway 10.
 - 207
 - 208 2. The Fort Kearny complex is approximately 2,437 acres, contains 6 tracts of land and is 5 miles long
209 (**Figure 6**).
 - 210
 - 211 3. There is a 28 acre of OCSW sites located at Tract 2009008.

212

213 Clark Island Complex- (New for 2018)

214 Contractors should be aware of the following points:

- 215
- 216 1. The Clark Island Complex is located less than 1/4 mile to the south of Interstate 80 and is located near
217 the towns of Gibbon, NE and Shelton, NE.
 - 218
 - 219 2. The Clark Island complex is approximately 764 acres, contains 1 tract of land and is 2 miles long (**Figure**
220 **7**).

221

222 Shoemaker Island Complex

223 Contractors should be aware of the following points:

- 224
- 225 1. Shoemaker Island Complex is located less than 1/2 mile to the south of Interstate 80 between 2 channels
226 of the Platte River near the towns of Wood River and Alda, NE.
 - 227
 - 228 2. Shoemaker Island complex is approximately 1,834 acres, contains 3 tracts of land and is 3 miles long
229 (**Figure 8**).
 - 230
 - 231 3. There is a 16 acre OCSW site located in the middle of East Tract 2011001 and a 6 acre OCSW site
232 located on Tract 2011002.

233

234 OCSW Bare Ground West

- 235 1. OCSW Bare Ground West tracts are located to the south of Interstate 80 between the towns of Lexington
236 and Kearney, NE.

237



238 2. OCSW Bare Ground West contains 3 sites and is approximately 54 acres, approximately 14 acres of
239 overbank spraying along channel, and the remaining areas are buildings and parking areas on various tracts
240 (**Figure 9**).

241
242 OCSW Bare Ground East

243 1. OCSW Bare Ground East tracts are located to the south of Interstate 80 between Highway 10- I-80
244 interchange and the town of Alda, NE.

245
246 2. OCSW Bare Ground West contains 3 tracts of land is approximately 46 acres, 1 inchannel island
247 approximately 9 acres, and the remaining areas are buildings and parking areas on various tracts (**Figure**
248 **10**).

249
250 NOTE: DETAILED MAPS AVAILBLE UPON REQUEST AFTER AWARDDING OF CONTRACT(S).

251
252 **V. BID ITEMS**

253 Contractors will submit mobilization and demobilization costs by habitat complex, per-hour rate of labor,
254 per-hour rate of equipment, and chemical cost mark up. Contractor compensation will be based on the
255 mobilization and demobilization cost, number of hours of labor and equipment use, and the quantity of
256 herbicides used to complete the work.

257
258
259 **VI. FIELD AND OFFICE EQUIPMENT**

260 Potential Contractors will own or acquire all field and office equipment and software required to provide
261 chemical application services.

262
263
264 **VII. CONTRACT TERMS**

265 The selected Contractor (s) will be retained by: Nebraska Community Foundation
266 PO Box 83107
267 Lincoln, NE 68501
268

269 The Contractor will be subject to (but not limited to) the following contract terms:
270

271 Certification/Training Requirements: Meet or exceed Nebraska Department of Agriculture herbicide
272 spraying certification and training requirements.
273

274 Insurance Requirements: If awarded, Contractor shall represent and guarantee that all employees, agents,
275 servants or representatives of Contractor, and all employees, agents, servants, or representatives of sub
276 consultants are covered by workers' compensation insurance as required by Nebraska Statute. Prior to
277 entering into contract with PRRIP, contractor shall furnish PRRIP with certificates of insurance, naming
278 PRRIP as named or additional insured without waiving any defense of sovereign immunity or increasing
279 the limits of PRRIP's liability in excess of Nebraska State Statute for item (3) below, providing evidence
280 that contractor has in full force and effect the following minimum insurance with insurers authorized to do
281 business in the State of Nebraska. The certificate of insurance shall also provide that PRRIP shall be notified
282 in writing by the carrier at least 30 days prior to any cancellation of said insurance.
283

284 1. Workers' compensation insurance as required above;
285



286 2. Motor vehicular liability insurance with limits of not less than \$1,000,000 combined single limit which
287 insurance shall be applicable to any and all vehicles utilized by contractor to provide the services requested
288 by PRRIP;

289
290 3. General liability insurance for all services rendered by contractor for the requested services with a
291 minimum of \$1,000,000 personal and advertising injury and \$1,000,000 general aggregate.

292
293 **VIII. SUBMISSION REQUIREMENTS**
294 All interested parties having experience providing the services listed in this RFB are requested to submit a
295 bid.

296
297 Instructions for Submitting Bids
298 One original bid document supporting documentation must be submitted by mail or email to Tim Tunnell
299 no later than 5:00 PM Central Time **Friday, February 23, 2018**. A bid is late if received after that time
300 and will not be considered. Proposals should be submitted to:

301
302 Tim R. Tunnell, Senior Land Manager
303 Platte River Recovery Implementation Program
304 4111 4th Avenue, Suite 6
305 Kearney, NE 68845

306
307 tunnellt@headwaterscorp.com
308

309 Questions regarding the information contained in this RFB should be submitted by **email only** (no phone
310 calls) to Tim Tunnell at tunnellt@headwaterscorp.com. A list of compiled Contractor questions and
311 responses will be maintained on the Program web site (www.PlatteRiverProgram.org) in the same location
312 as this RFB solicitation.

313
314 RFB Schedule
315 The ED Office expects to complete the selection process and award the work by approximately March 1,
316 2018. The following table represents the RFB schedule:

317

| Description | Date | Time (Central) |
|--|-----------------------------------|----------------|
| Issue RFB | February 2, 2018 | NA |
| Mandatory Pre-proposal meeting | February 16, 2018 | 1:00 PM |
| Last day for respondents to submit questions regarding the RFB | February 21, 2018 | 12:00 PM |
| Bids due from respondents | February 23, 2018 | 5:00 PM |
| Evaluation of bids | February 23, 2018 - March 1, 2018 | |
| Award of Work | On or around March 1, 2018 | |
| Start of Work | Approximately April 1, 2018 | |
| Completion of Work | Approximately November 15, 2018 | |

318
319 Pre-Bid Meeting
320 A **mandatory** pre-bid meeting of interested parties will be held on February 16, 2018 from 1:00 to 2:00
321 p.m. Central Time via conference call or in person at the PRRIP Conference room for the purpose of
322 familiarizing the respondents with the work scope and requirements included herein before submitting a
323 response to this RFB. The PRRIP conference room is located in the Eagle Nest Plaza at 4111 4th Avenue,



324 Suite 6 in Kearney, NE 68845. Please email Tim Tunnell (tunnelt@headwaterscorp.com) for the
325 conference call dial-in information and provide a list of people from your party expected to join in the pre-
326 proposal meeting by 12:00 p.m. central time on February 15, 2018.

327
328 It is the Contractor's responsibility, while at the pre-proposal meeting/conference call, to ask questions
329 necessary to understand the RFB so the respondent can submit a proposal that is complete and in accordance
330 with RFB requirements. There shall be no minutes distributed by the ED Office regarding the meeting.

331
332 *Bid Content*

333 Bids must include the following contents and documentation:

- 334
335 **1) General Information**
336
337 **2) Completed Bid Form** including identification of the habitat complexes and/or bare ground areas
338 (east/west) that the contractor is bidding on.
339
340 **3) Equipment list** that includes all equipment that would be mobilized for this project.
341
342 **4) References Names/address/telephone** of three clients who can attest to your experience as it relates to
343 the services you are proposing.
344
345 **5) Description of insurance** shall be provided with the proposal. Proof of insurance will be required
346 before a contract is issued. Minimum insurance requirements are described in Section VII.
347
348 **6) Affirmative statement** that neither the firm nor the principals of the firm are on the federal suspended
349 and disbarred list. If the firm has a DUNS number, please provide to assist in verification.

350
351 *Criteria for Evaluating Bids*

352 Bids will be evaluated and a Contractor selected based on the following principal considerations:

- 353 1. Price proposal.
354 2. Equipment availability.
355 3. References.
356 4. Insurance and affirmative statement.

357
358 The winning bid will be selected to best meet overall project objectives. Should the successful Contractor(s)
359 be unable at any time to accomplish the work they have been contracted for or meet any of the requirements
360 or standards listed in this Bid, the next ranked Contractor may be contacted to provide the required work.

361
362 *Award Notice*

363 After completing the evaluation of all bids, the Program will select a Contractor. If the Program is unable
364 to negotiate a mutually satisfactory contract with a Contractor, it may, at its sole discretion, cancel and
365 reissue a new RFB.

366
367 *Program Perspective*

368 The Program GC has the sole discretion and reserves the right to reject any and all bids received in response
369 to this RFB and to cancel this solicitation if it is deemed in the best interest of the Program to do so. Issuance
370 of this RFB in no way constitutes a commitment by the Program to award a contract, or to pay Contractor's
371 costs incurred either in the preparation of a response to his RFB or during negotiations, if any, of a contract



372 for services. The Program also reserves the right to make amendments to this RFB by giving written notice
373 to Contractors, and to request clarification, supplements, and additions to the information provided by a
374 Contractor.

375
376 By submitting a bid in response to this solicitation, Contractors understand and agree that any selection of
377 a Contractor or any decision to reject any or all responses or to establish no contracts shall be at the sole
378 discretion of the Program. To the extent authorized by law, the Contractor shall indemnify, save, and hold
379 harmless the Nebraska Community Foundation, the states of Colorado, Wyoming, and Nebraska, the
380 Department of the Interior, members of the GC, and the ED Office, their employees, employers, and agents,
381 against any and all claims, damages, liability, and court awards including costs, expenses, and attorney fees
382 incurred as a result of any act or omission by the Contractor or its employees, agents, sub-Contractors, or
383 assignees pursuant to the terms of this project. Additionally, by submitting a proposal, Contractor agrees
384 that they waive any claim for the recovery of any costs or expenses incurred in preparing and submitting a
385 proposal.

386

387 **IX. BID RESPONSE FORMS**

388 The following forms are to be submitted as part of Contractor proposals.



389 **PART I: GENERAL INFORMATION**

| | | |
|--|------------------------|--------------------------------------|
| Company Name: | Telephone Number: | Fax Number: |
| Mailing Address: | City, State, Zip Code: | |
| Physical Address: | City, State, Zip Code: | |
| Name of Contact: | Telephone Number: | E-mail Address & Company web address |
| Business Type: <input type="checkbox"/> Corporation <input type="checkbox"/> Partnership <input type="checkbox"/> Individual <input type="checkbox"/> Consolidated Company | | |
| Status: <input type="checkbox"/> Prime Contractor <input type="checkbox"/> Subcontractor | Federal Tax ID: | |
| Number of Employees (at peak): | Age of Firm: | Insurance Limit: |

390



391 **PART II: PLATTE RIVER RECOVERY IMPLEMENTATION PROGRAM**

392

393 **2018 CHEMICAL APPLICATION SERVICES**
394 **LABOR & EQUIPMENT COST RATE:**
395

396 Please identify which Habitat Complex you are interested in providing Chemical Application
397 Services:

| 398 | | Bare Ground | Bare Ground |
|-----|--|---------------|--|
| 399 | Noxious Weed Sites: | Sites West: | Sites East: |
| 400 | Plum Creek Complex | Tract 2009003 | Tract 2009008 |
| 401 | Cottonwood Ranch Complex | Tract 2008002 | Tract 2011001 |
| 402 | Elm Creek Complex | Tract 2010002 | Tract 2011002 |
| 403 | Pawnee Complex | | Chapman MCA island (<i>New for 2018</i>) |
| 404 | Fort Kearny Complex | | |
| 405 | Clark Island Complex (<i>New for 2018</i>) | | |
| 406 | Shoemaker Island Complex | | |

407
408 The Contractor is required to submit unit prices for all work Items below that apply to the proposal:

| Item No. | Description | Unit | Unit Price |
|----------|--|---------|------------|
| 001 | Mobilization and Demobilization ¹ | | |
| | Plum Creek Complex | LS | \$ _____ |
| | Cottonwood Ranch Complex | LS | \$ _____ |
| | Elm Creek Complex | LS | \$ _____ |
| | Pawnee Complex | LS | \$ _____ |
| | Ft. Kearny Complex | LS | \$ _____ |
| | Clark Island Complex | LS | \$ _____ |
| | Shoemaker Island Complex | LS | \$ _____ |
| | Bare Ground Sites West | LS | \$ _____ |
| | Bare Ground Sites East | LS | \$ _____ |
| 002 | Chemical Application-Labor ² | HR | \$ _____ |
| 003 | Chemical Application-Equipment ³ | | |
| | Chemical Application-Spray Truck | HR | \$ _____ |
| | Chemical Application-ATV | HR | \$ _____ |
| | Chemical Application-UTV/Argo | HR | \$ _____ |
| | Chemical Application-Airboat | HR | \$ _____ |
| 004 | Chemical Cost Markup ⁴ | YES/ NO | % _____ |

409 PART III: List equipment that is available to complete work.

¹ Lump sum rate for mobilization and demobilization per site and per year of service.

² Per-hour rate for chemical application or labor required to complete the work.

³ Per-hour rates for equipment required to complete the work.

⁴ Chemical will be reimbursed based on use and mark-up.



410

| Quantity | Item* (Description, Size, Capacity. Etc.) | Present Location |
|----------|--|------------------|
| | | |
| | | |
| | | |
| | | |
| | | |
| | | |
| | | |
| | | |

411

412

413

GPS Capability? **Yes/No** **Brand of Unit** _____

414

415

416

Preferred Chemical for Bare Ground:

417

418

419

420

421

422

423

424

425

Preferred Chemical for Noxious Weeds:

426

427

428

429

430

431

432

433

434

435



436 **PART IV: PLATTE RIVER RECOVERY IMPLEMENTATION PROGRAM**

437

438

REFERENCES:

439

440

(Names/address/telephone of three clients who can attest to your experience
as it relates to the services you are proposing.)

441

442

443

444

FIRM NAME: _____

445

CONTACT PERSON: _____

446

ADDRESS: _____

447

TELEPHONE: _____

448

EMAIL: _____

449

450

451

FIRM NAME: _____

452

CONTACT PERSON: _____

453

ADDRESS: _____

454

TELEPHONE: _____

455

EMAIL: _____

456

457

458

FIRM NAME: _____

459

CONTACT PERSON: _____

460

ADDRESS: _____

461

TELEPHONE: _____

462

EMAIL: _____

463

464



465
466
467

Appendix A

NEBRASKA NOXIOUS WEEDS

- 468 • Saltcedar (*Tamirix* spp.)
- 469 • Purple Loosestrife (*Lythrum salicaria* L.)
- 470 • Phragmites (*Phragmites australis*)
- 471 • Leafy Spurge (*Euphorbia esula* L.)
- 472 • Canada Thistle (*Cirsium arvense* L.)
- 473 • Musk Thistle (*Carduus nutans* L.)
- 474 • Plumless Thistle (*Carduus acanthoides*)
- 475 • Spotted (*Centaurea stoebe*) and Diffuse (*Centaurea diffusa*) Knapweed
- 476 • Japanese (*Fallopia japonica*), Giant (*Fallopia sachalinensis*) and Bohemian (*Fallopia*
477 *bohemica*) Knotweed
- 478 • Sericea Lespedeza (*Lespedeza cuneata*)

**Appendix B****NEBRASKA INVASIVE WEED WATCH LIST**

479
480
481
482
483
484 Invasive Plants Watch List: Mixedgrass Prairie Ecoregion (Adams, Boyd, Buffalo, Custer,
485 Dawson, Franklin, Frontier, Furnas, Gosper, Greeley, Hall, Harlan, Hayes, Hitchcock, Howard,
486 Kearney, Keya Paha, Nuckolls, Phelps, Red Willow, Sherman, Valley, Webster)

487
488 Future Invasive Species:

489 Giant reed *Arundo donax* L.
490 Oriental bittersweet *Celastrus orbiculatus*
491 Water hyacinth *Eichhornia crassipes*
492 Hydrilla *Hydrilla verticillata*
493 Brittle naiad *Najas minor*
494 Giant salvinia *Salvinia molesta*

495
496 Priority Species:

497 Amur maple *Acer ginnala*
498 Russian knapweed *Acrotilon repens*
499 Garlic mustard *Allaria petiolata*
500 Australian beardgrass
501 (Caucasian bluestem) *Bothriochloa bladhii* (*Andropogon bladhii*)
502 Cutleaf teasel *Dipsacus laciniatus*
503 European alder-
504 buckthorn *Frangula alnus*
505 Japanese honeysuckle *Lonicera japonica*, *morrowii*, *morrowii* x *tatarica* (also Morrow, Showy
506 Fly) *Myriophyllum spicatum* Eurasian water-milfoil
507 Sulphur cinquefoil *Potentilla recta* L.
508 Yellow-flag Iris *Iris pseudacorus*



509
510
511
512
513
514
515
516
517
518
519
520
521
522
523
524
525
526
527

528
529
530
531
532
533
534
535
536
537
538
539
540
541
542
543
544

Appendix C
PRRIP Chemical Management Form
(Must Accompany Invoice for Payment)

Date _____

Complex _____ Tract _____ Start Time _____ End Time _____

Contract Company Name _____ Licensed Supervisor Name _____

Weather Conditions:

Wind Speed: _____ mph Wind Direction: _____ Temperature: _____ °F

(Circle)

Sunny Partly Cloudy Cloudy Rain Cloud Cover: _____ %

(Circle)

Bare Ground Thistle Leafy Spurge Phragmites Purple Loosetrife Tree/Brush _____

Other _____ Other _____ Other _____ Other _____ Other _____

| App Date | App Hrs | Equip Used | Target Spp. | Herbicide | Rate | Adjuvant/Oil | Mix | Gallons Herbicide | Adj | |
|----------|---------|------------|-------------|-----------|------|--------------|-----|-------------------|-----|--|
| | | | | | | | | | | |
| | | | | | | | | | | |
| | | | | | | | | | | |
| | | | | | | | | | | |
| | | | | | | | | | | |
| | | | | | | | | | | |
| | | | | | | | | | | |

Comments: _____

Follow-up

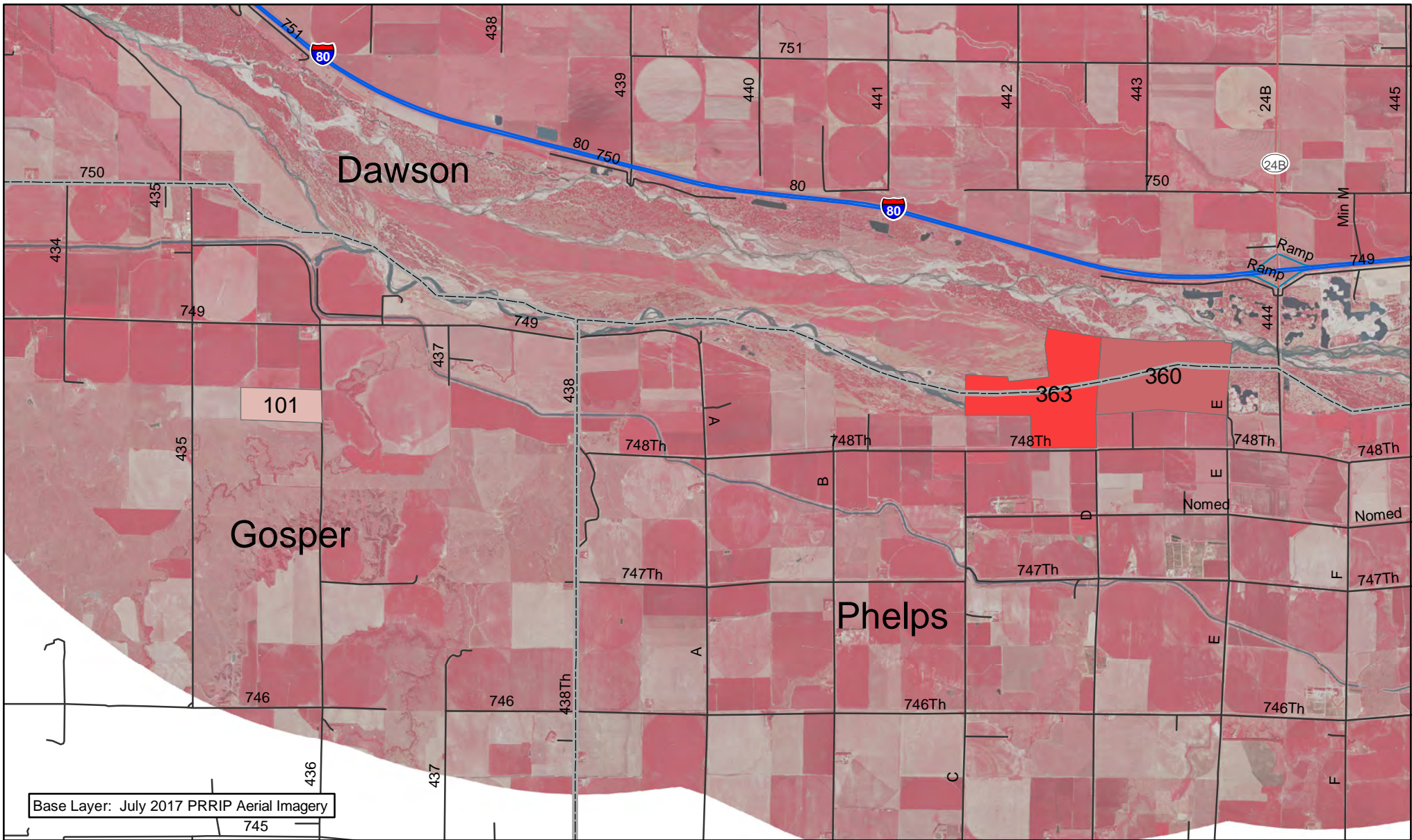
Comments _____

Identify Coverage Area on Map/ Provide GPS data



545
546

Appendix D
Figures 1- 10



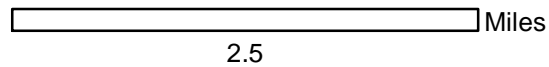
Base Layer: July 2017 PRRIP Aerial Imagery



Legend

PRRIPTractNum

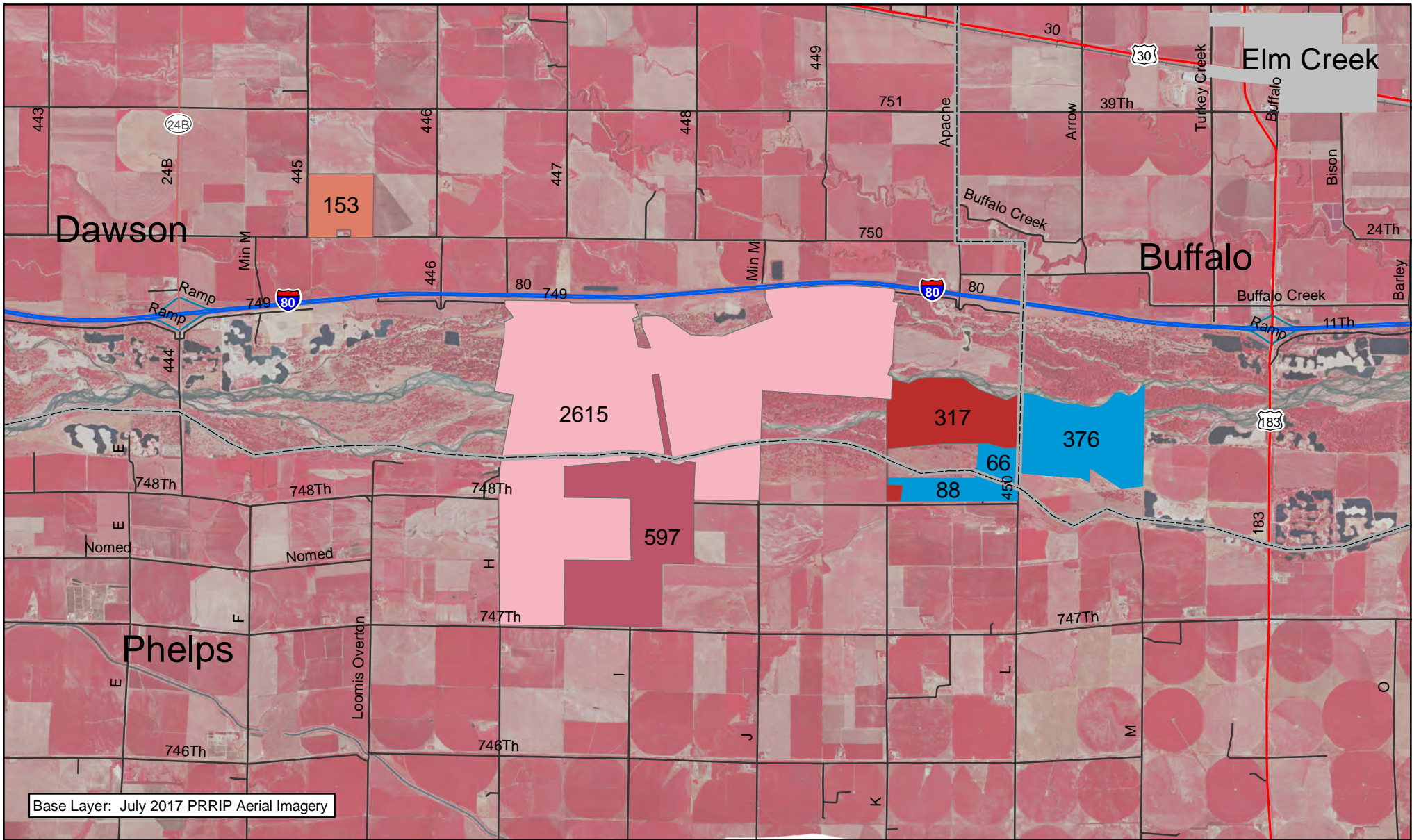
- 2009003
- 2009007
- 2012004



PLUM CREEK COMPLEX

Date: 01/5/2018
By: TRT

Figure 2



Base Layer: July 2017 PRRIP Aerial Imagery

Legend

PRRIPTractNum

- 2008002
- 2009006
- 2010001
- 2013001

Water_Plan_Tracts



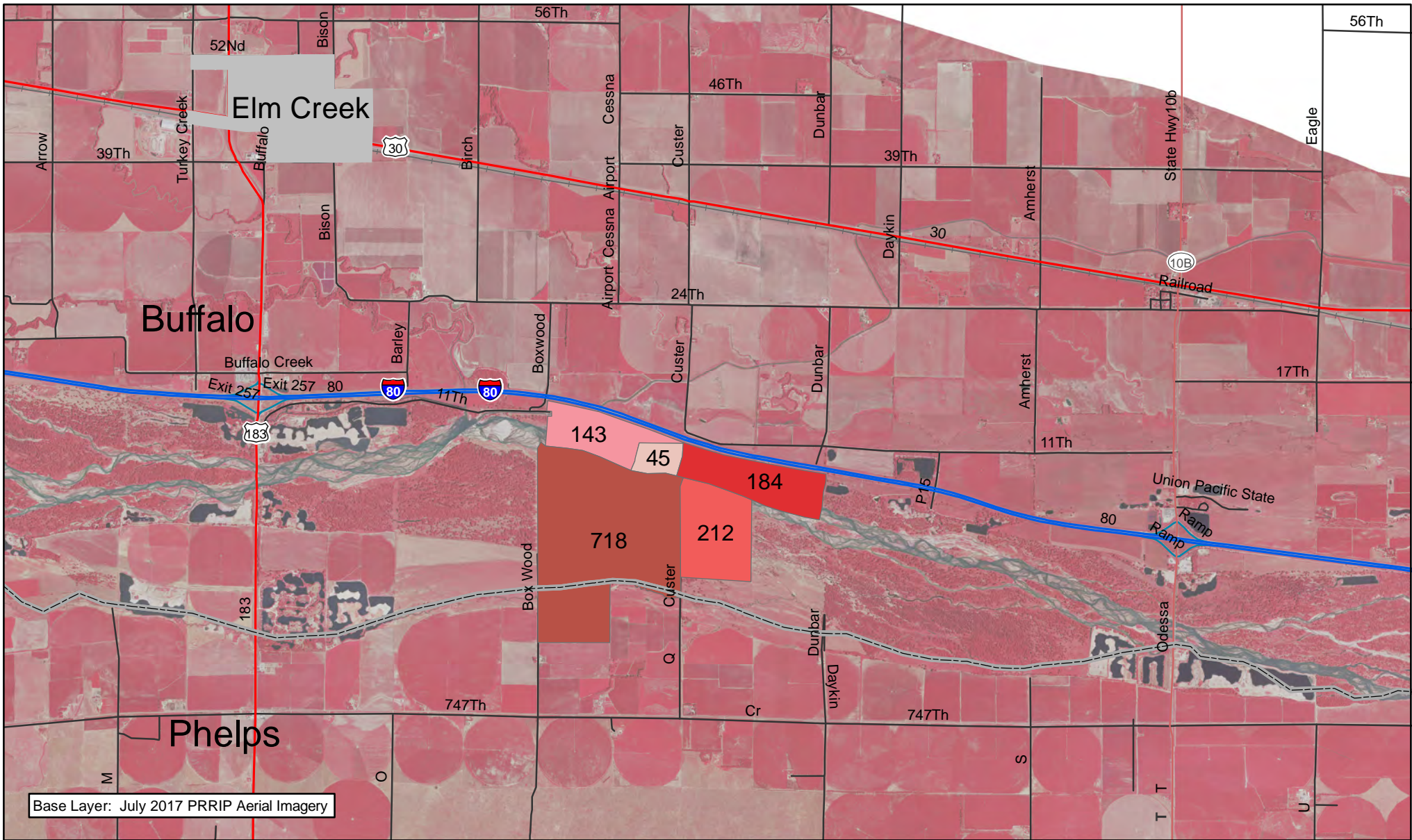
————— Miles

2.5

**COTTONWOOD RANCH
COMPLEX**

Date: 01/5/2018
By: TRT

Figure 3

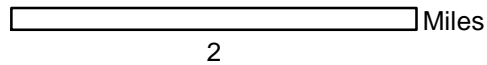


Base Layer: July 2017 PRRIP Aerial Imagery

Legend

PRRIP Tract

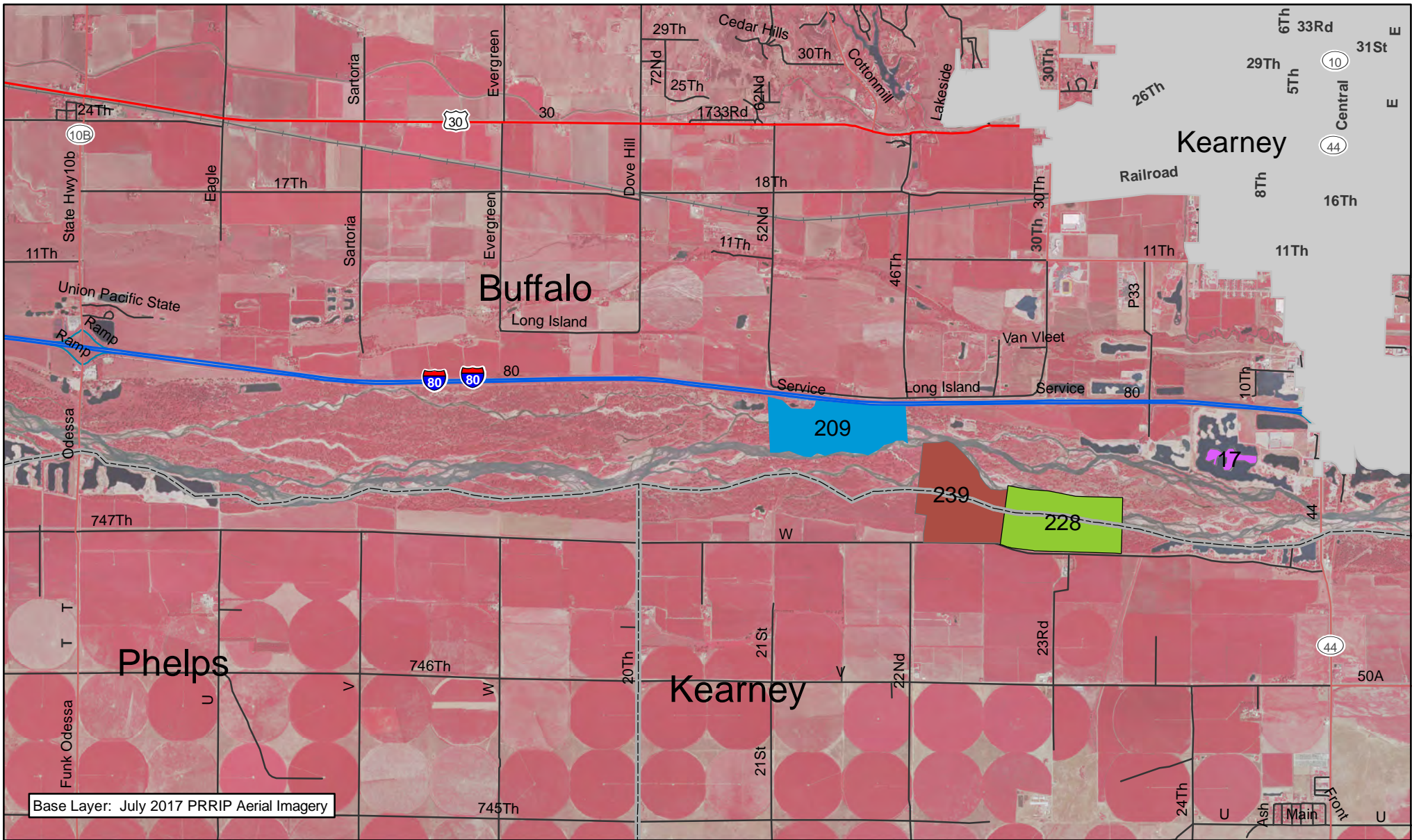
- 2009002
- 2009005
- 2012001
- 2012002
- 2015003



**ELM CREEK
COMPLEX**

Date: 01/5/2018
By: TRT

Figure 4



Base Layer: July 2017 PRRIP Aerial Imagery



Legend

Conservation_Lands

PRRIPTractNum

- DOR
- 2015002
- 2014002
- 2010002

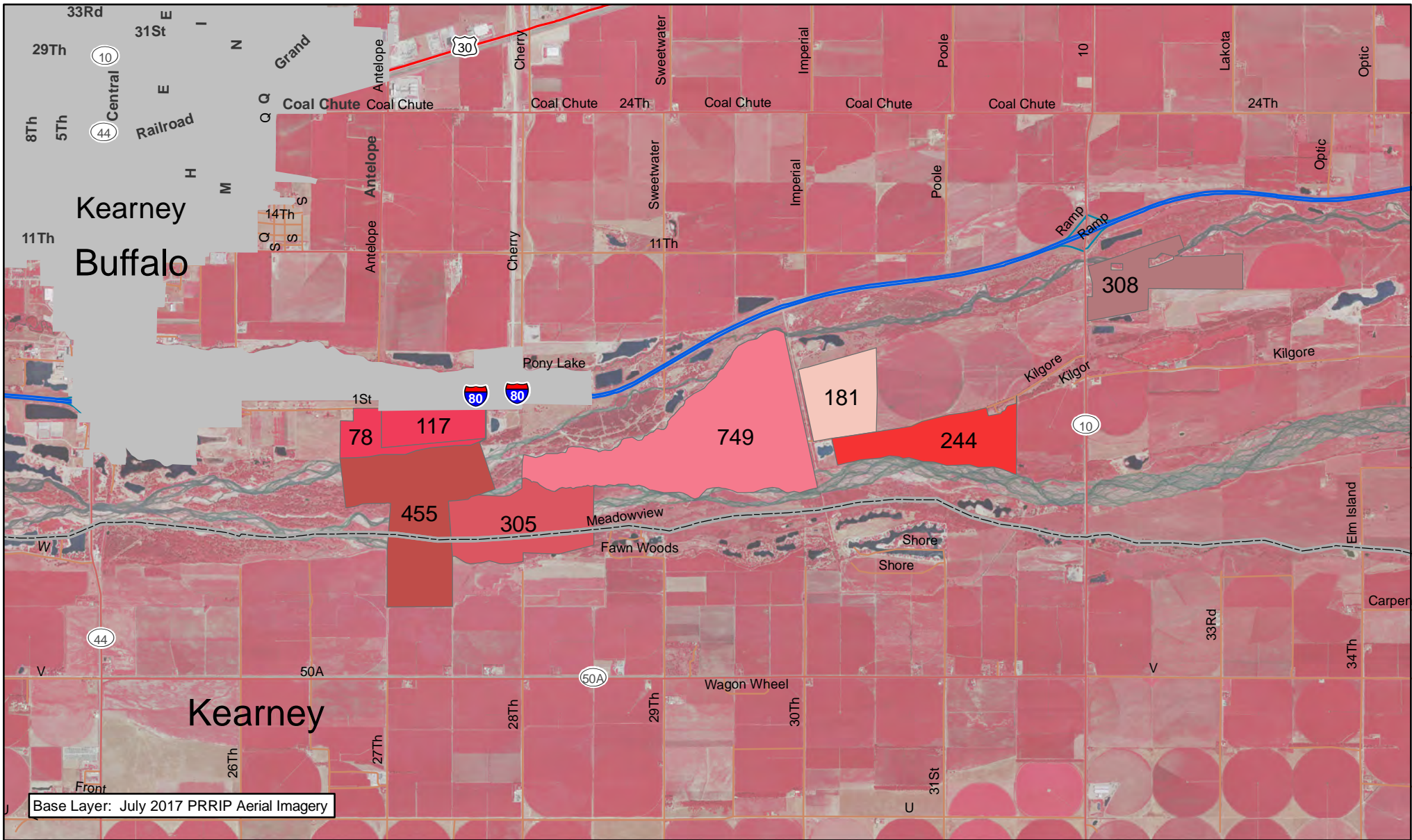


2.5 Miles

**PAWNEE
COMPLEX**

Date: 01/5/2018
By: TRT

Figure 5



Base Layer: July 2017 PRRIP Aerial Imagery

Legend

Conservation_lands

PRRIPTract

- 2008001
- 2009001
- 2009004
- 2009008
- 2010003
- 2012003
- 2015001



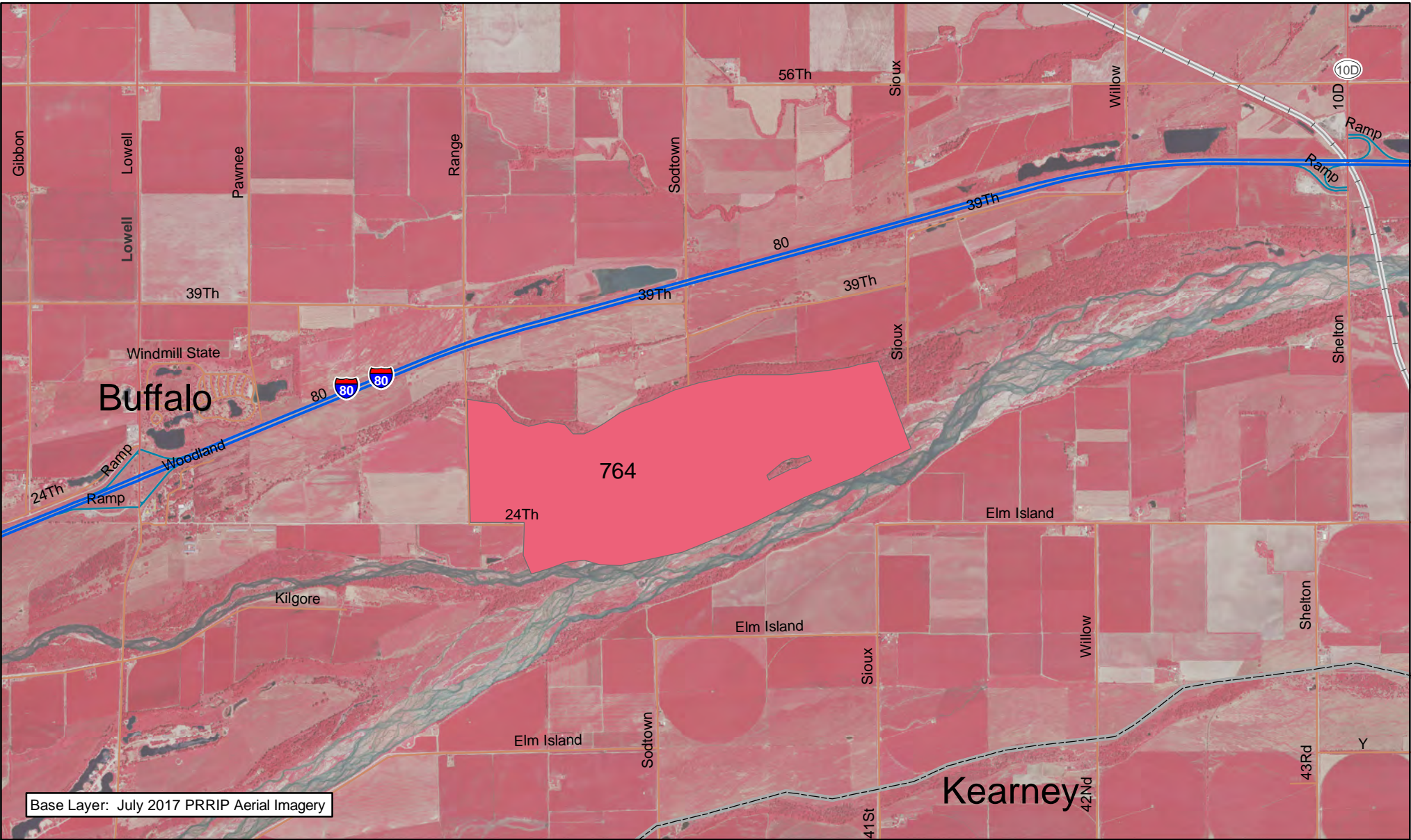
2 Miles

2

**FORT KEARNY
COMPLEX**

Date: 01/5/2018
By: TRT

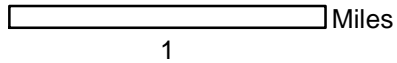
Figure 6



Base Layer: July 2017 PRRIP Aerial Imagery



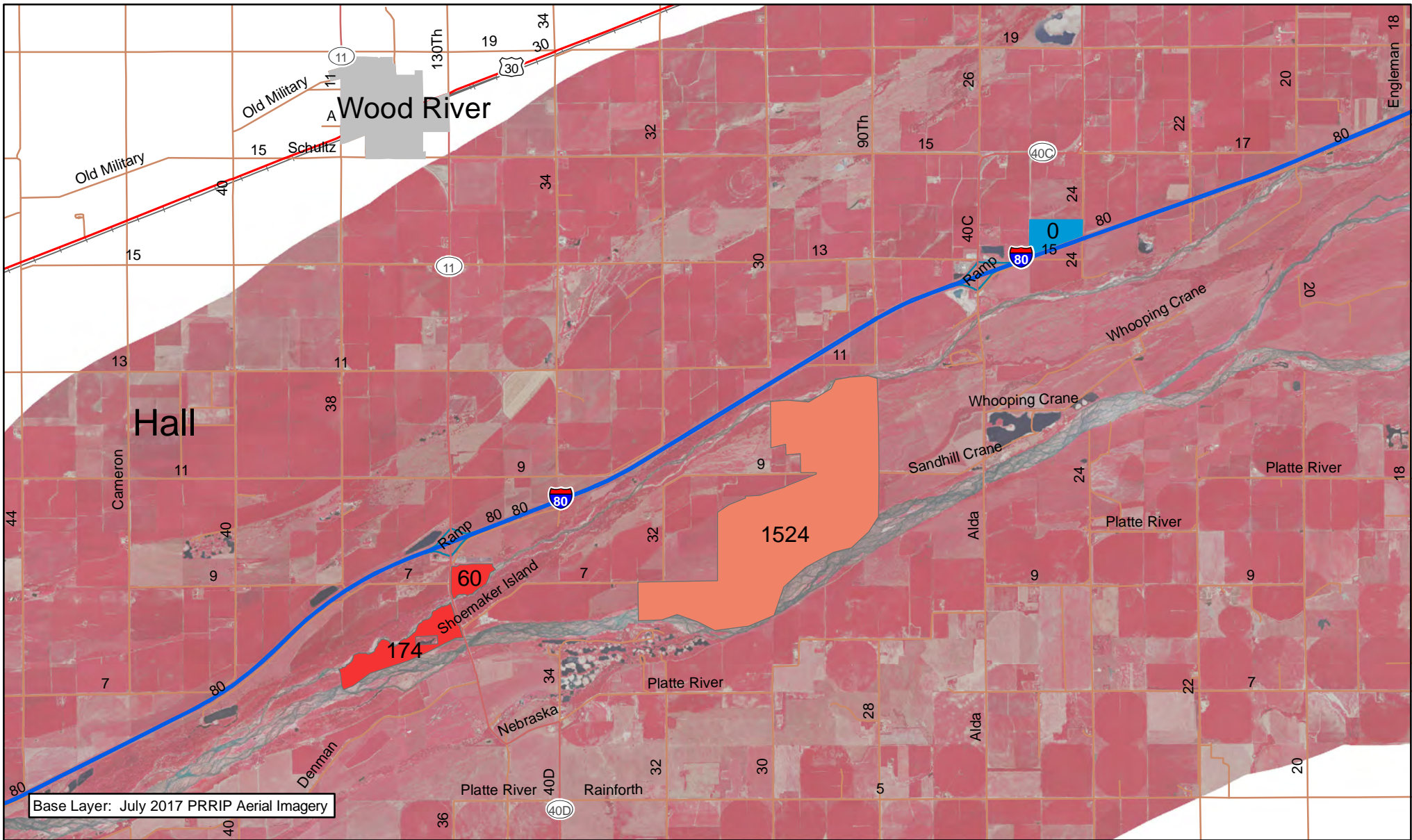
Legend
Conservation_lands
NAME
 Dippel Tract



**CLARK ISLAND
 COMPLEX**

Date: 01/5/2018
 By: TRT

Figure 7



Base Layer: July 2017 PRRIP Aerial Imagery

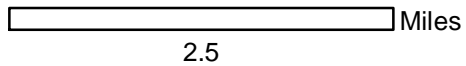


Legend

Conservation_lands

PRRIPTract

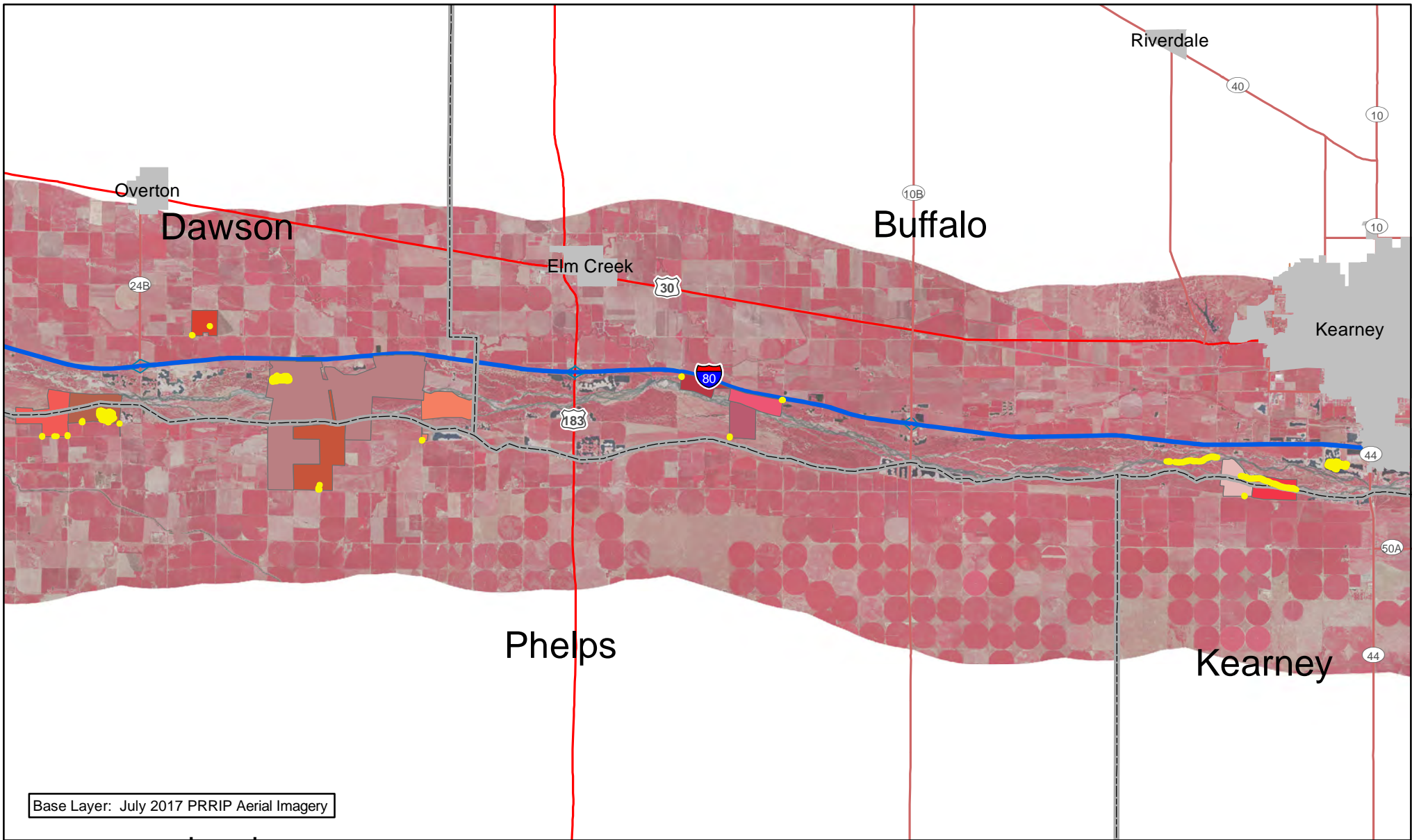
- 2010004
- 2011001
- 2011002



**SHOEMAKER ISLAND
COMPLEX**

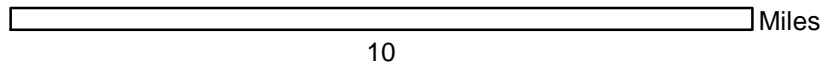
Date: 01/5/2018
By: TRT

Figure 8



Legend

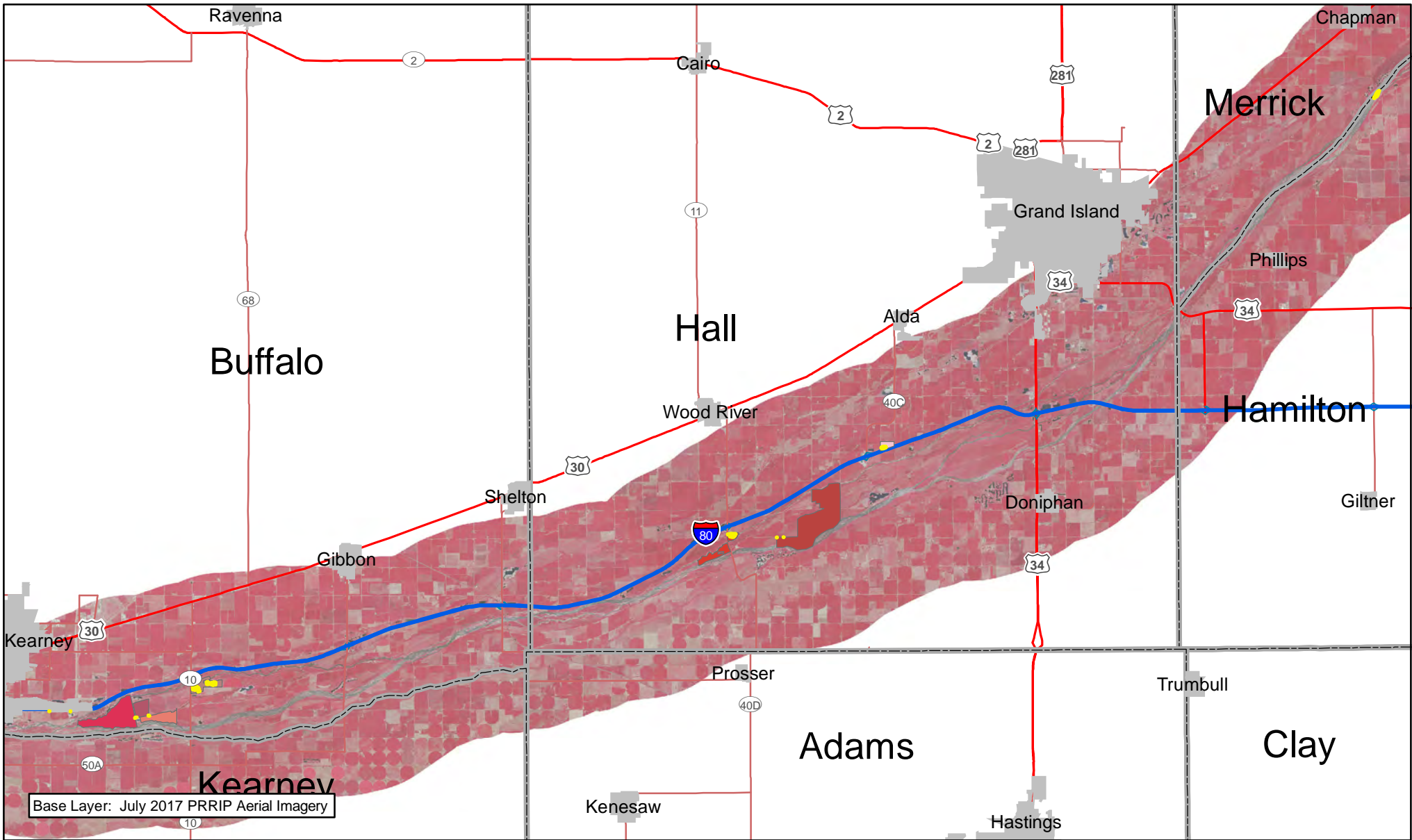
| PRRIPTractNum | |
|---------------|---------|
| 2008002 | 2010001 |
| 2009002 | 2010002 |
| 2009003 | 2012001 |
| 2009005 | 2013001 |
| 2009006 | 2014002 |
| 2009007 | 2015002 |



OCSW BARE GROUND
WEST

Date: 01/5/2018
By: TRT








Figure 9

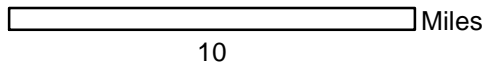


Base Layer: July 2017 PRRIP Aerial Imagery



Legend

| PRRIPTractNum | |
|---|---------|
|  | 2009001 |
|  | 2009004 |
|  | 2009008 |
|  | 2010004 |
|  | 2011001 |
|  | 2011002 |
|  | 2015001 |



OCSW BARE GROUND
WEST

Date: 01/5/2018
By: TRT

Figure 10