



REQUEST FOR PROPOSALS (RFP)

Spring 2012 Prescribed Fire Management Services

PLATTE RIVER RECOVERY IMPLEMENTATION PROGRAM

Office of the Executive Director
4111 4th Avenue, Suite 6
Kearney, Nebraska 68845

January 30, 2012



Contents

I. OVERVIEW 3

II. PROJECT DESCRIPTION & SCOPE OF WORK 3

III. PROJECT BUDGET 10

IV. FIELD AND OFFICE EQUIPMENT 10

V. CONTRACT TERMS 10

VI. SUBMISSION REQUIREMENTS 11

VII. PROPOSAL RESPONSE FORMS 14

Appendix A – PRRIP Prescribed Fire Standards

Appendix B – PRRIP Fireline Standards



1 **PLATTE RIVER RECOVERY IMPLEMENTATION PROGRAM**
2 **REQUEST FOR PROPOSALS (RFP)**

3
4 **SUBJECT:** Spring 2012 Prescribed Fire Management Services
5 **REQUEST DATE:** January 31, 2012
6 **PRE-PROPOSAL MEETING:** February 10, 2012
7 **CLOSING DATE:** February 21, 2012
8 **POINT OF CONTACT:** Tim Tunnell, Land Manager
9 Headwaters Corporation
10 (402) 219-3883
11 tunnellt@headwaterscorp.com
12

13 **I. OVERVIEW**

14 The Platte River Recovery Implementation Program (“Program” or “PRRIP”) was initiated on January 1,
15 2007 between Nebraska, Wyoming, Colorado, and the Department of the Interior to address threatened
16 and endangered species issues in the central and lower Platte River basin. The species considered in the
17 Program, referred to as “target species”, are the whooping crane, piping plover, interior least tern, and
18 pallid sturgeon.

19
20 A Governance Committee (GC) reviews, directs, and provides oversight for Program activities. The GC
21 is comprised of one representative from each of the three states, three water user representatives, two
22 representatives from environmental groups, and two members representing federal agencies. The GC has
23 named Dr. Jerry Kenny to serve as the Program Executive Director (ED). Dr. Kenny established
24 Headwaters Corporation as the staffing mechanism for the Program. Program staff is located in Nebraska
25 and Colorado and are responsible for assisting in carrying out Program-related activities.

26
27 One of the major components of Program implementation is acquisition and management of 10,000 acres of
28 habitat for the benefit of the target species. To date, approximately 9,000 acres have been acquired and
29 are being managed by the Executive Director’s Office (EDO). Prescribed fire is an important tool used by
30 the Program to manage grassland composition and structure. To date, the program has relied on strategic
31 partnerships with local agencies and conservation organizations to implement prescribed fire. However,
32 as Program land ownership has increased, prescribed fire needs have surpassed local capacity. **As such,**
33 **the GC is requesting proposals from National Wildfire Coordinating Group (NGCG) qualified**
34 **contractors for spring 2012 prescribed fire management services to be performed over a period of**
35 **three (3) weeks starting March 15, 2012.**
36

37 **II. PROJECT DESCRIPTION & SCOPE OF WORK**

38 **Project Description**

39 The Program is requesting proposals for prescribed fire management services for three (3) weeks during
40 the spring of 2012. The performance period will begin on March 15, and will end on April 7. The
41 Program would provide lodging during the performance period but the Contractor will be responsible for
42 all labor, materials, equipment, tools, transportation and supplies required to complete the work. Fire
43 management services will include, but are not limited to, prescribed fire planning and implementation,
44 fire-line preparation, post burn mop-up and monitoring, and if needed wildfire suppression. Contractors
45 must be able to provide their own equipment.
46



47 Contractors must also be available respond to any issues that may arise after the contractor's prescribed
48 burn is complete. These issues could include: smoke management problems, mop-up concerns, post-burn
49 monitoring needs or escapes. This response must occur during the same day of contact by the Rural Fire
50 Protection Districts local fire chief with jurisdiction over the burn unit or EDO staff and must include the
51 appropriate personnel, equipment or contingency measures.

52
53 The PRRIP is requesting that the contractor be on site during the three (3) week period to fully utilize
54 weather windows that meet prescriptions for each of the five (5) habitat complexes. In the event of
55 inclement weather during the scheduled March 15 to April 7 time period, the PRRIP requests that the
56 contractor provide a list of habitat management services that your firm could provide during the down
57 time while on site or if the scheduled burns are finished early. The PRRIP will assume payment not to
58 exceed fifteen (15) workdays if inclement weather does not allow for the successful completion of all
59 scheduled burns.

60

61 **Scope of Work**

62 Habitat Complexes

63 Program lands are organized into approximately 2,000 to 3,000 acre blocks referred to as habitat
64 complexes. There are five habitat complex distributed across the project area, containing the majority of
65 land to be burned on an annual basis (**Figure-1**). The following description generally applies to areas that
66 will be burned:

- 67 • Most burn blocks on these tracts have been burned once over the last five to ten years; stand types
68 are primarily lowland, tall grass prairie that have been heavily invaded with introduced cool-
69 season grasses and often include natural riparian forest;
- 70 • most burn units have been grazed and/or hayed;
- 71 • burns will be scheduled for late spring to suppress invading cool season grasses.

72

73 The following sections of the scope of work provide specific information about the burn units within each
74 habitat complex.

75

76 Plum Creek Complex

77 Contractors should be aware of the following points:

78

79 1. Plum Creek Complex is located less than 1 mile to the south of Interstate 80 between the towns of
80 Lexington and Overton, NE.

81

82 2. Plum Creek complex contains 2 tracts of land and is 2 miles long with the majority of the land located
83 on the south side of the Platte river; mostly grassland fuels; There are 2 burn units (labeled A-B) and is
84 approximately 233 acres and can be divided into smaller areas (**Figure-2**).

85

86 3. All trees have been removed from the east mile of the complex and ~30 acres of cropland has been
87 reseeded back to native grass. The west end of the complex is a native hay meadow with the majority of
88 the tract remaining in cropland. There is a ground water drain that traverses the west tract towards the
89 east side. This drain is ~20 feet deep and extends to the river. There is a wooden bridge that crosses the
90 drain. There is a lodge located at the southern end of the sandpits towards the east end of the unit.

91

92 4. The northern fire-line will be the Platte River; the southern fire line will be a mowed two-track road,
93 crop stubble field, and alfalfa field. The east and west fire-lines will be mowed lines along property
94 boundary. Fire-lines are often limited to roads, ditches, mowed/hayed lines and river/ slough edges;



95 contractors should be comfortable burning from these features; additional fire-line establishment can be
96 conducted but must be authorized by the PRRIP Land Manager.

97

98 Cottonwood Ranch Complex

99 Contractors should be aware of the following points:

100

101 1. Cottonwood Ranch Complex is located less than 1 mile to the south of Interstate 80 between the towns
102 of Overton and Elm Creek, NE.

103

104 2. Cottonwood Ranch complex contains 3 tracts of land and is 4 miles long with the majority of the land
105 located on the south side of the main channel of the Platte river; mostly grassland fuels; There are six
106 burn units (labeled A-F) and is approximately 791 acres and can be divided into smaller areas (**Figure-3**).

107

108 3. **Burn Unit A** is located south of a newly constructed off channel sand and water habitat area and north
109 of the main channel of the Platte river. All trees have been removed from the west boundary and the
110 north boundary east of the nesting area. The unit is predominantly cottonwood forest with an eastern red
111 cedar understory. **Burn Unit B** is located between 2 channels of the Platte River and is predominately
112 lowland tall grass prairie. Grazing on this unit was deferred during the 2011 grazing season. The primary
113 firebreak on the north and east boundary is a 20-30ft mowed line. The secondary firebreak is the north
114 channel of the Platte River. There is an alfalfa field east of the east boundary on privately owned property.
115 The primary firebreak on the south is a 2 track road that extends the length of the unit and the secondary
116 firebreak is the main channel of the Platte River. **Burn Unit C** is located south of the Platte River and is
117 predominantly riparian forest. All trees have been removed from the east, west and south boundary.
118 There is a side channel that crosses the middle of the unit and the main channel is the northern boundary.
119 **Burn Units D-F** are located south of the Platte River and are predominately lowland tall grass prairie.
120 Grazing was not deferred on this unit during the 2011 grazing season. There is a minimum maintenance
121 road on the North boundary that was mowed in the fall of 2011, grazed/hayed pasture on the east,
122 drainage ditch and disked crop field on the south, and gravel county road on the west. There is a 115 Kv
123 transmission line that extends the length of the tract on the north burn unit boundary along the minimum
124 maintenance road.

125

126 4. Fire-lines are often limited to roads, ditches, mowed/hayed lines and river/ slough edges; contractors
127 should be comfortable burning from these features; additional fire-line establishment can be conducted
128 but must be authorized by the PRRIP Land Manager.

129

130 Elm Creek Complex

131 Contractors should be aware of the following points:

132

133 1. Elm Creek Complex is located less than 1/4 mile to the south of Interstate 80 between the towns of Elm
134 Creek and Odessa, NE.

135

136 2. Elm Creek complex contains 2 tracts of land and is 2 miles long with one tract being located on the
137 north side of the Platte river and the other located on the south side of the Platte river; These tracts are
138 primarily riparian forest within the accretion ground; There are 4 burn units (labeled A-C) and is
139 approximately 136 acres that can be divided into smaller areas (**Figure-4**).

140

141 3. **Burn Unit A** is located between Interstate 80 and the north channel of the Platte River and is
142 predominately riparian forrest. Most understory trees have been removed and there has been no grazing



143 on the unit in 10+ years. The primary firebreak on the north is crop field (planted to corn in 2011-
144 scheduled to be seeded to grass in fall 2011). There is an 115Kv transmission line that extends the length
145 of the tract on the north burn unit boundary. The secondary firebreak is the Kearney canal and Interstate
146 80. There is a state owned wildlife management area on the east. The firebreak on the south is the main
147 channel of the Platte River. **Burn Unit B** is a small 7 acre island that is bounded by channels of the Platte
148 River on the north and south. There is a state owned wildlife management area on the east. **Burn Unit B**
149 is a 32 acre island located south of the Platte River. All trees have been removed from the island and was
150 reseeded to native grasses and forbs in the spring of 2011. The north boundary is the main channel of the
151 Platte River, the east and west properties outside of the boundary is privately owned, and the south
152 boundary is a wetted slough. There is an active bald eagle nest in a group of trees on the adjoining
153 property to the west and a PRCF population in the channel south of the boundary. Care must be taken to
154 avoid allowing fire to escape to these 2 areas. **Burn Unit C** is located south of the Platte River and is at
155 the southern end of the tract. Understory trees have been removed from the majority of the area and was
156 reseeded to native grasses and forbs in the spring of 2011. The unit has a history of livestock grazing but
157 was deferred for the 2011 grazing season. Trees have been cleared on the east, west and south boundary
158 and the boundary was mowed in the fall of 2011.

159
160 4. Fire-lines are often limited to roads, ditches, mowed/hayed lines and river/ slough edges; contractors
161 should be comfortable burning from these features; additional fire-line establishment can be conducted
162 but must be authorized by the PRRIP Land Manager.

163
164 Fort Kearny Complex

165 Contractors should be aware of the following points:

166
167 1. The Fort Kearny Complex is located less than 1/2 mile to the south of Interstate 80 and is located
168 between 2 channels of the Platte River near the town of Kearney, NE and Highway 10.

169
170 2. The Fort Kearny complex contains 2 tracts of land and is 5 miles long; Two of the tracts are cropland
171 that is being converted to grassland and two tracts are mostly grassland fuels; There are 9 burn units
172 (labeled A-I) and is approximately 277 acres and can be divided into smaller areas (**Figure-5**).

173
174 3. **Burn Unit A** is located between Interstate 80 and the north channel of the Platte River and is
175 predominately open grassland with scatted cottonwood trees along the northern edge of the unit. Most
176 understory trees have been removed and there has been grazing on the unit in 2011. The primary firebreak
177 on the north is a 2 track road that extends the length of the unit and crop field (planted to corn in 2011).
178 The secondary firebreak is Interstate 80. A hand line will be required on the east and west boundaries.
179 There is a dike consisting of concrete rubble along the east boundary on the adjacent property. The
180 firebreak on the south is the main channel of the Platte River. **Burn Unit B** is a small 4 acre island with
181 water on the north and south. A hand line will be required on the east end. **Burn Unit C** is located
182 between 2 channels of the Platte River. The unit is heavily treed with cottonwood, eastern red cedar, etc.
183 The unit can be burned in conjunction with Burn Unit F. **Burn Units D-F** are located between 2 channels
184 of the Platte River. All trees have been removed from most of the burn unit and brush re-growth has been
185 treated with herbicide in 2009 and 2010. **Burn Unit G** is bounded by channels of the Platte River on the
186 north and most of the south boundaries. Hand lines will be required on the portion of the south boundary
187 that is not river channel. **Burn Units H-I** are small islands surrounded by water.

188



189 4. Fire-lines are often limited to roads, ditches, mowed/hayed lines and river/ slough edges; contractors
190 should be comfortable burning from these features; additional fire-line establishment can be conducted
191 but must be authorized by the PRRIP Land Manager.

192

193 Shoemaker Island Complex

194 Contractors should be aware of the following points:

195

196 1. Shoemaker Island Complex is located less than 1/2 mile to the south of Interstate 80 between 2
197 channels of the Platte River near the towns of Wood River and Alda, NE.

198

199 2. Shoemaker Island complex contains 2 tracts of land and is 3 miles long; There are 2 burn units (labeled
200 A-B) and is approximately 441 acres and can be divided into smaller areas (**Figure-6**).

201

202 3. **Burn Unit A** is grazed and was not deferred in 2011. The south, east, and west boundaries will be
203 mowed lines and the north boundary is the north channel of the Platte River. A large portion of this burn
204 unit will have cedar trees sheared and placed in piles. These piles are scheduled to be removed prior to
205 March 1, 2012. **Burn Unit B** is grazed and was not deferred in 2011. The north, east, and west
206 boundaries will be mowed lines and the south boundary is the main channel of the Platte River. A large
207 portion of this burn unit will have cedar trees sheared and placed in piles. These piles are scheduled to be
208 removed prior to March 1, 2012.

209

210 4. Fire-lines are often limited to roads, ditches, mowed/hayed lines and river/ slough edges; contractors
211 should be comfortable burning from these features; additional fire-line establishment can be conducted
212 but must be authorized by the PRRIP Land Manager.

213

214 Smoke Sensitive Areas:

215 The tracts are primarily located in rural landscape with scattered farmsteads however they are near
216 interstates, major highway(s) and/or populated areas.

217

218 Communities at Risk:

219 Nine communities exist within the PRRIP project area: Lexington-Grand Island (**Figure-7**). Their
220 proximity to PRRIP properties makes them vulnerable to smoke and other hazards related to wildfire and
221 prescribed burning. Additional outlying communities that may also be affected by smoke
222 include Bertrand, Loomis, Holdrege, Funk, Axtell, Minden, Heartwell, Kenesaw, Juniata, Hastings,
223 Doniphan, Cairo, Riverdale, Amherst, and Miller (**Figure-7**).

224

225 Wildfire Suppression and Escaped Prescribed Fires:

226 In the event of an escaped prescribed fire originally ignited by the contractor, contractors may be
227 responsible for coordinating with and working under the direction of the Rural Fire Protection Districts
228 local fire chief with jurisdiction over the area on containment, mop-up and monitoring issues until fire is
229 called out by the appropriate agency. During this process contractors may be responsible for paying
230 suppression costs charged for fire suppression and may be required to conduct work or provide assistance
231 without compensation by the PRRIP.

232

233

234 Long-Term Mop-Up, Smoke Management, and Re-Burn Situations:

235 Compliance with smoke management guidelines are voluntary in Nebraska, however, the Contractor shall
236 make every effort to meet them. All prescribed fire plans shall address smoke management as a primary



237 issue and prescription parameter. Contractors may be required to conduct long-term mop-up, monitoring
238 and smoke management procedures without compensation. This may occur if PRRIP personnel determine
239 a lack of due diligence and planning occurred before ignition began or if proper procedures were not
240 taken to mop-up and secure fire after ignition was completed.

241

242 Submittals:

243 *Prescribed Burn Plans* - Burn plans must be developed by a NWCG qualified Rx Burn planner prior to
244 the proposed burn date. Plans will be written on a NWCG approved burn form or an alternative form
245 approved by the PRRIP Land Manager. The prescribed burn plan shall be in accordance with Nebraska
246 Statutes subsection 81-520.01 and 81-520-02. **Fully completed, legible, plans with a copy of the open**
247 **burn permit will be delivered to the PRRIP Land Manager within five business days following the**
248 **completion of each burn.** These plans must be signed by the Burn Manager. Plans can be scanned and e-
249 mailed, faxed or hand delivered. They must include all actual weather data recorded the day of the burn
250 and any other planning notes recorded before or during the burn.

251

252 Burn Managers will follow the PRRIP Weather Parameter Standards (**APPENDIX–A**) when planning
253 and implementing prescribed burns. Fire weather forecasts for the appropriate county containing the burn
254 site will be used the day of the burn. These are available from the following National Weather Service
255 online sources:

256

257 Hastings:

258 <http://www.crh.noaa.gov/gid/?n=firewx>

259 North Platte:

260 <http://www.crh.noaa.gov/lbf/forecasts/firewx/firewx.php>

261

262 **A copy of these forecasts must accompany the burn plan when submitted to the PRRIP.**

263

264 The PRRIP requires that contractors keep good records of all pre-burn planning and site evaluation
265 measures as well as actual firing techniques used during prescribed burn implementation. This includes
266 full documentation of information such as: burn purpose and objective, forecasted and actual weather
267 conditions, spot weather forecasts, soil moisture conditions (including soil saturation and depth to water
268 in wetlands), days since rain, amount of rain received on the actual burn block, Keetch-Byram drought
269 index (KBDI), etc. This information should be included in the burn plan or as an attachment.

270

271 The burn purpose and burn objective will be determined by PRRIP staff. This information will be
272 conveyed to contractors before the burn is implemented to help with burn plan development. In general,
273 the burn purpose will describe an overall goal such as site preparation or hazard reduction and the burn
274 objective will identify a specific, measurable, parameter such as remove 75% of available fuels or top-kill
275 50% of trees less than three (3) inches diameter at breast height (DBH).

276

277 Prior to the burn, Burn Managers will evaluate the site to determine the type of ignition methods, firing
278 techniques and weather conditions needed to meet the pre-determined objective, safely conduct the burn,
279 and minimize negative effects such as duff ignition/soil damage, crown scorch, or smoke management
280 problems. This information will be included in the burn plan.

281

282 A copy of the burn plan and a site map showing burn area location, fire-lines, roads, and natural features
283 shall be in the possession of the burn manager at the time of the burn. PRRIP staff will provide burn
284 managers with a map and/or ground location point of any areas personnel should avoid. PRRIP staff may



285 instruct personnel to avoid disking, plowing or igniting fires in these areas. These sites may contain
286 historical resources, threatened and endangered plant or animal locations, public use facilities or exotic
287 plant infestations.

288
289 Contractors will notify the PRRIP's Land Manager as soon as possible but at least within 24 hours if the
290 following circumstances occur after the burn has been completed: 1) fire has escaped, 2) burn objectives
291 were not met or 3) negative conditions or smoke management problems occurred.

292
293 *Prescribed Burn Notification* - By 5:00 PM one day prior to ignition or by 8:30 AM the day of the burn,
294 the Burn Manager responsible for conducting the burn will notify the PRRIP Land Manager by *e-mail*
295 indicating the location of the burn area (Section, Township, Range), the tract name/number, the county
296 where the burn will be conducted, and the approximate acreage planned.

297
298 *Implement Burn Plans* – Prescribed fires on PRRIP lands are required to be conducted in compliance with
299 Nebraska Statutes subsection 81-520.01 and 81-520-02 and any other applicable laws. The Contractor
300 shall monitor all burn units and to determine when a unit is in prescription. All prescribed fires will also
301 be conducted in compliance with all aspects of the PRRIP Prescribed Fire *Standards (APPENDIX-A)*.

302
303 Fireline installation and plowing will follow guidelines identified in the PRRIP Fireline Standards
304 (*APPENDIX-B*).

305
306 *Escaped Prescribed Fires* - In the event of an escaped prescribed fire, contractors shall initiate
307 suppression actions, contact directly affected parties, Rural Fire Protection Districts local fire chief with
308 jurisdiction over the area, and then notify the PRRIP Land Manager or the Land Specialist. In general, the
309 PRRIP Land Manager or Land Specialist will lead all discussion with affected parties. The Burn Manager
310 responsible for conducting the burn should document the conditions of the escape using photos, GPS data,
311 maps, and a written narrative describing the incident including any adverse results and any lessons
312 learned or measures that could be taken in the future to prevent another incident. Any involvement from
313 local fire department with jurisdiction over the area to contain the escape should also be documented.
314 Written or email communication outlining the general details of the incident should be sent to the PRRIP
315 Land Manager within 48 hours. A full report documenting all the above information should be submitted
316 to the PRRIP within one week following the incident.

317
318 *Shapefiles* – Before a burn is conducted, the PRRIP will provide contractors with GIS shapefiles of areas
319 to be burned. After the burn is complete, contractors must submit a shapefile showing the areas that were
320 actually burned. These shapefiles must be included with the each invoice. To receive payment, the
321 acreage identified in shapefiles must be identical to the acreage listed on the invoice to the nearest 1/10
322 acre. Shapefiles will be projected to: NAD 1983 Nebraska State Plane Feet. The PRRIP shall field verify
323 and pay based on this acreage.

324
325 *Equipment Information:*
326 *Minimum Wildland Engine Specifications:* Wildland engines used by contractors on PRRIP burns must
327 meet or exceed all equipment specifications of the National Wildfire Coordinating Group (NWCG) for
328 Type 6 engines, with the added requirements of four-wheel drive (4X4) and foam proportioner. Type 6
329 specifications include: minimum tank size of 150 gallons; a pump rated at 50 gallons per minute (GPM)
330 @ 100 pounds per square inch (PSI); a hose and reel with a minimum of 50' of 1" hose; 300' feet of
331 additional 1" hose; fire hydrant adapters and the ability to draft water.

332



333 On most burns, contractors will have a minimum of one engine and two UTV units on site.

334
335 Contractors are also required to provide all personal protective equipment (PPE) listed in the Program’s
336 Prescribed Fire Standard under Training and Safety Requirements (National Wildfire Coordinating Group
337 (NWCG) Standard). (**APPENDIX – A**)

338
339 **III. PROJECT BUDGET**

340 Based on the limited number of burn days available each year, the variability of tract size and diverse
341 locations, and variability of fuel characteristics, the Program has determined it needs a contractor to be
342 on-site with fully staffed/equipped burn crew ready to mobilize when weather conditions are appropriate.
343 As such, the Program requests that Contractors submit a “time and materials not to exceed” budget in the
344 proposal that would provide for full turn-key fire management services for the full performance period of
345 three weeks. Additional proposal submission requirements are presented in Section VI.

346
347
348 **IV. FIELD AND OFFICE EQUIPMENT**

349 Potential Contractors will own or acquire all field and office equipment and software required to provide
350 prescribed fire management services.

351
352 **V. CONTRACT TERMS**

353 The selected Contractor will be retained by: Nebraska Community Foundation
354 PO Box 83107
355 Lincoln, NE 68501

356
357 The Contractor will be subject to (but not limited to) the following contract terms:

358
359 Certification/Training Requirements: See certification and training requirements in Appendix A.

360
361 Insurance Requirements: If awarded, contractor shall represent and guarantee that all employees, agents,
362 servants or representatives of contractor, and all employees, agents, servants, or representatives of
363 subconsultants are covered by workers’ compensation insurance as required by Nebraska Statute. Prior to
364 entering into contract with PRRIP, contractor shall furnish PRRIP with certificates of insurance, naming
365 PRRIP as named or additional insured without waiving any defense of sovereign immunity or increasing
366 the limits of PRRIP’s liability in excess of Nebraska State Statute for item (3) below, providing evidence
367 that contractor has in full force and effect the following minimum insurance with insurers authorized to
368 do business in the State of Nebraska. The certificate of insurance shall also provide that PRRIP shall be
369 notified in writing by the carrier at least 30 days prior to any cancellation of said insurance.

- 370
371 1. Workers’ compensation insurance as required above;
372 2. Motor vehicular liability insurance with limits of not less than \$1,000,000 combined single limit which
373 insurance shall be applicable to any and all vehicles utilized by contractor to provide the services
374 requested by PRRIP;
375 3. General liability insurance for all services rendered by contractor for the requested services with a
376 minimum of \$1,000,000 personal and advertising injury and \$1,000,000 general aggregate.

377
378 Contractor Liability: If a wildfire occurs as the result of the Contractor’s failure to follow the approved
379 Prescribed Fire Plan, the Contractor shall be liable for all damages and all costs for labor, subsistence,



380 equipment, supplies, and transportation deemed necessary to control the escaped fire and repair/replace
381 all PRRIP, personal and/or non-federal public property.

382
383 Open Burning Permits: A burning permit from the Rural Fire Protection Districts fire chief with
384 jurisdiction over the area to be burned is required. Names and contact information of the local fire chief
385 will be available and it will be the responsibility of the burn manager to make contact with the fire chief,
386 present the written burn plan and obtain a signed copy of the “Open Burning Permit.” A copy of this burn
387 permit must be provided to PRRIP with the final copy of burn plan for each burn unit.

388
389 **VI. SUBMISSION REQUIREMENTS**
390 All interested parties having experience providing the services listed in this RFP are requested to submit a
391 proposal.

392
393 *Instructions for Submitting Proposals*
394 One original and five (5) copies of your proposal and supporting documentation must be submitted by
395 mail to Tim Tunnell *no later than 10:00 AM Central Time Tuesday, February 21, 2012*. A proposal is
396 late if received after that time and will not be considered. Proposals should be submitted to:

397
398 Tim Tunnell, Land Manager
399 Platte River Recovery Implementation Program
400 4111 4th Avenue, Suite 6
401 Kearney, NE 68845

402
403 Questions regarding the information contained in this RFP should be submitted to Tim Tunnell at
404 tunnellt@headwaterscorp.com. A list of compiled Contractor questions and responses will be maintained
405 on the Program web site (www.PlatteRiverProgram.org) in the same location as this RFP solicitation.

406
407

408 RFP Schedule

409 The ED Office expects to complete the selection process and award the work by approximately February
410 24, 2012. The following table represents the RFP schedule:

411

Description	Date	Time (Central)
Issue RFP	January 31, 2012	NA
Pre-proposal meeting	February 10, 2012	1:00 PM
Last day for respondents to submit questions regarding the RFP	February 17, 2012	12:00 PM
Proposals due from respondents	February 21, 2012	12:00 PM
Evaluation of proposals	February 21, 2012 to February 24, 2012	
Award of Work	On or before February 24, 2012	
Start of Work	Approximately March 15, 2012	
Completion of Work	Approximately April 7, 2012	

412

413 Pre-Proposal Meeting

414 A mandatory pre-proposal meeting of interested parties will be held on February 10, 2012 from 1:00 to
415 2:00 p.m. Central Time via conference call for the purpose of familiarizing the respondents with the work
416 scope and requirements included herein before submitting a response to this RFP. Please email Tim
417 Tunnell (tunnellt@headwaterscorp.com) for the conference call dial-in information along with a list of
418 people from your party expected to join in the pre-proposal conference call by 12:00 p.m. Central time on
419 February 6, 2012.

420

421 It is the Consultant's responsibility, while at the pre-proposal meeting/conference call, to ask questions
422 necessary to understand the RFP so the respondent can submit a proposal that is complete and in
423 accordance with RFP requirements. There shall be no minutes distributed by the ED Office regarding the
424 meeting.

425

426 Proposal Content

427 Proposals must include the following contents and documentation:

428

429 1) **Executive summary** that presents a brief firm overview that condenses and highlights the contents of
430 the proposal in such a way as to provide a broad understanding of the Contractor's qualifications and
431 proposal.

432

433 2) **Project Understanding** that demonstrates the Contractor's understanding of project objectives and
434 identifies issues critical to project success.

435

436 3) **Project approach** that documents how the Contractor would organize and execute the scope of work
437 detailed in this RFP and provides project team organization, certifications, and responsibilities and
438 specifies which team members will work on each specific task.

439

440 4) **Qualifications and project experience** relevant to this project including the involvement/role of the
441 proposed team in those projects. A sample project experience/reference form is included in Section
442 VII.

443

444 5) **Equipment** list that includes all equipment that would be mobilized for this project.

445



- 446 **6) Compensation** for all time and materials necessary to complete the scope of work. A compensation
447 form has been included in Section VII.
448
- 449 **7) Description of insurance** shall be provided with the proposal. Proof of insurance will be required
450 before a contract is issued. Minimum insurance requirements are described in Section V.
451

452 Criteria for Evaluating Proposals

453 The GC will appoint a Proposal Selection Panel that will evaluate all proposals and select a Consultant
454 based on the following principal considerations:
455

- 456 1. Understanding of the overall objectives of the project and approach to meeting those objectives.
457
- 458 2. Qualifications and experience completing comparably sized prescribed burn projects safely and in a
459 timely manner.
460
- 461 3. The number/type of qualified personnel/equipment proposed to be dedicated to the project.
462
- 463 4. Ability to provide turn-key prescribed burns services or provide multiple crews.
464
- 465 5. Price proposal.
466

467 The winning proposal will be selected to best meet overall project objectives. Should the successful
468 Proposers be unable at any time to accomplish the work they have been contracted for or meet any of the
469 requirements or standards listed in this Proposal, the next ranked Contractor may be contacted to provide
470 the required work.
471

472 Award Notice

473 After completing the evaluation of all proposals, the Proposal Selection Panel will select a Contractor.
474 That firm will negotiate with the ED Office to establish a fair and equitable contract. If an agreement
475 cannot be reached, a second firm will be invited to negotiate and so on. If the Program is unable to
476 negotiate a mutually satisfactory contract with a Consultant, it may, at its sole discretion, cancel and
477 reissue a new RFP.
478

479 Program Perspective

480 The Program GC has the sole discretion and reserves the right to reject any and all proposals received in
481 response to this RFP and to cancel this solicitation if it is deemed in the best interest of the Program to do
482 so. Issuance of this RFP in no way constitutes a commitment by the Program to award a contract, or to
483 pay Contractor's costs incurred either in the preparation of a response to his RFP or during negotiations,
484 if any, of a contract for services. The Program also reserves the right to make amendments to this RFP by
485 giving written notice to Contractors, and to request clarification, supplements, and additions to the
486 information provided by a Contractor.
487

488 By submitting a proposal in response to this solicitation, Contractors understand and agree that any
489 selection of a Contractor any decision to reject any or all responses or to establish no contracts shall be at
490 the sole discretion of the Program. To the extent authorized by law, the Contractor shall indemnify, save,
491 and hold harmless the Nebraska Community Foundation, the states of Colorado, Wyoming, and
492 Nebraska, the Department of the Interior, members of the GC, and the ED Office, their employees,
493 employers, and agents, against any and all claims, damages, liability, and court awards including costs,



494 expenses, and attorney fees incurred as a result of any act or omission by the Contractor or its employees,
495 agents, sub-Contractors, or assignees pursuant to the terms of this project. Additionally, by submitting a
496 proposal, Contractors agree that they waive any claim for the recovery of any costs or expenses incurred
497 in preparing and submitting a proposal.

498

499 **VII. PROPOSAL RESPONSE FORMS**

500 The following forms are to be submitted as part of Contractor proposals.

501

502



PLATTE RIVER RECOVERY IMPLEMENTATION PROGRAM

WEEKLY RATE:

Weekly rate should include providing a full crew stationed within the project area to be available to burn as weather allows. All pre-burn planning, ignition and stand-by time, mop-up and monitoring time (within the first 24 hours after ignition is complete) as well as all other labor, materials, equipment, tools, transportation and supplies required to complete the work. It is expected that a 3week prescribed burn detail will be required to meet prescribed burning objectives.

The Contractor is required to submit quotes for all work Items below.

Item No.	Description	Unit	Bid Price
001	Mobilization ¹	LS	\$ _____
002	Pre-burn planning ²	LS	\$ _____
003	Labor of crew/ week ³	LS	\$ _____
004	Equipment/ week ⁴	LS	\$ _____
005	Demobilization ⁵	LS	\$ _____

¹Item includes costs to mobilize all personnel and equipment needed to complete the work from contractor’s base of operations to Overton, NE.

²Item includes burn plan development, burn unit reconnaissance, obtaining burn permit from appropriate fire department, and neighbor notifications for each unit.

³Item includes cost of labor for full NWCG crew for a week prescribed burning detail within PRRIP project area. This includes ignition and stand by time, mop up and monitoring time within the first 24 hours after ignition is complete on each unit.

⁴Item includes all materials, equipment, tools, transportation, fuel and supplies to complete the work for a 1 week prescribed burning detail.

⁵Item includes costs to demobilize from Overton, NE to contractor’s base of operations.

NOTE: Lodging for prescribed fire contractor will be provided at the Program’s Plum Creek Complex. Existing lodge at that location will accommodate a crew of approximately eight.



PLATTE RIVER RECOVERY IMPLEMENTATION PROGRAM

SIMILAR PROJECTS:

530
531
532
533
534
535
536
537
538
539
540
541
542
543
544
545
546
547
548
549
550
551
552
553
554
555
556
557
558
559
560
561
562
563
564
565
566
567
568
569
570
571
572
573
574
575
576
577
578

COMPLETED PROJECT: _____

AGENCY/COMPANY: _____

CONTACT: _____ TELEPHONE: _____

START DATE: _____ COMPLETION DATE: _____

(month/year)

(month/year)

NUMBER OF ACRES RESPONSIBLE FOR BURNING/YEAR: _____

DESCRIPTION OF STAND TYPE(S)/FUEL LEVEL(S) BURNED: _____

IGNITION METHOD(S) USED: _____

TOTAL ACRES BURNED: _____

CERTIFIED PRESCRIBED BURN MANAGER(S) ASSIGNED TO PROJECT: _____

COMPLETED PROJECT: _____

AGENCY/COMPANY: _____

CONTACT: _____ TELEPHONE: _____

START DATE: _____ COMPLETION DATE: _____

(month/year)

(month/year)

NUMBER OF ACRES RESPONSIBLE FOR BURNING/YEAR: _____

DESCRIPTION OF STAND TYPE(S)/FUEL LEVEL(S) BURNED: _____

IGNITION METHOD(S) USED: _____

TOTAL ACRES BURNED: _____

CERTIFIED PRESCRIBED BURN MANAGER(S) ASSIGNED TO PROJECT: _____



579 COMPLETED PROJECT: _____
580
581 AGENCY/COMPANY: _____
582 CONTACT: _____ TELEPHONE: _____
583
584 START DATE: _____ COMPLETION DATE: _____
585 (month/year) (month/year)
586 NUMBER OF ACRES RESPONSIBLE FOR BURNING/YEAR: _____
587
588 DESCRIPTION OF STAND TYPE(S)/FUEL LEVEL(S) BURNED: _____
589 _____
590 _____
591
592 IGNITION METHOD(S) USED: _____
593
594 TOTAL ACRES BURNED: _____
595
596 CERTIFIED PRESCRIBED BURN MANAGER(S) ASSIGNED TO PROJECT: _____
597 _____
598 _____

600
601
602
603 COMPLETED PROJECT: _____
604
605 AGENCY/COMPANY: _____
606 CONTACT: _____ TELEPHONE: _____
607
608 START DATE: _____ COMPLETION DATE: _____
609 (month/year) (month/year)
610 NUMBER OF ACRES RESPONSIBLE FOR BURNING/YEAR: _____
611
612 DESCRIPTION OF STAND TYPE(S)/FUEL LEVEL(S) BURNED: _____
613 _____
614 _____
615
616 IGNITION METHOD(S) USED: _____
617
618 TOTAL ACRES BURNED: _____
619
620 CERTIFIED PRESCRIBED BURN MANAGER(S) ASSIGNED TO PROJECT: _____
621 _____
622 _____

623
624
625
626



PLATTE RIVER RECOVERY IMPLEMENTATION PROGRAM

REFERENCES:

(Names/address/telephone of three clients who can attest to your experience as it relates to the services you are proposing.)

627
628
629
630
631
632
633
634
635
636
637
638
639
640
641
642
643
644
645
646
647
648
649
650
651
652
653
654
655
656
657
658
659

FIRM NAME: _____
ADDRESS: _____
CONTACT PERSON: _____
TELEPHONE: _____
EMAIL: _____
FAX: _____

FIRM NAME: _____
ADDRESS: _____
CONTACT PERSON: _____
TELEPHONE: _____
EMAIL: _____
FAX: _____

FIRM NAME: _____
ADDRESS: _____
CONTACT PERSON: _____
TELEPHONE: _____
EMAIL: _____
FAX: _____



660 **APPENDIX - A**
661 **PLATTE RIVER RECOVERY IMPLEMENTATION PROGRAM**
662 **PRESCRIBED FIRE STANDARDS**
663

664 **INTRODUCTION**

665 These Standards are designed to define procedures to be used by personnel involved in the planning,
666 reviewing, approving and implementing of prescribed fire on Platte River Recovery Implementation
667 Program (PRRIP) property.

668 **GUIDELINES**

669 **1. Prescribed Fire Implementation**
670

671
672 Prescribed fires on PRRIP lands are required to be conducted in compliance with Nebraska Statutes
673 subsection 81-520.01 and 81-520-02 and any other applicable laws.

674
675 Fireline installation and plowing will follow guidelines identified in the PRRIP Fireline Standards
676 document (Appendix B).

677
678 By 5:00 PM one day prior to ignition or by 8:30 AM the day of the burn, the Burn Manager responsible
679 for conducting the burn will notify the PRRIP Land Manager by *e-mail* indicating the location of the burn
680 area (Section, Township, Range), the tract name, the county where the burn will be conducted, and the
681 approximate acreage planned. The Land Specialist and the PRRIP Receptionist will also be copied on this
682 e-mail. In the event of an escaped prescribed fire, contractors should initiate suppression actions, contact
683 local fire chief with jurisdiction over the area, and then notify the PRRIP Land Manager or the Land
684 Specialist. If the escape impacts private property, the landowner should be contacted by the Land
685 Specialist. The Burn Manager responsible for conducting the burn should document the results of the
686 escape using photos, GPS, maps, and a written narrative describing the incident including any adverse
687 results; any involvement from local fire department with jurisdiction over the area to contain the escape
688 should also be documented. Written communication outlining the general details of the incident should be
689 sent to the PRRIP Land Manager within 48 hours. A full report documenting the all the above
690 information should be submitted within one week following the incident.

691
692 **2. Prescribed Burn Manager Requirements**
693

694 All prescribed fires on PRRIP land will be managed by a NWCG Certified Prescribed Burn Boss as
695 defined in the Wildland Fire and Prescribed Fire Qualification System Guide published by the National
696 Wildfire Coordinating Group (NWCG), Publication Numbers PMS 310-1 and NFES 1414 (January 2009)
697 and shall have detailed functional knowledge and specialized experience with prescribed burning in
698 grassland fuels. The certified Burn Manager must be present on site at all times during burn operations.
699 An updated copy of the Burn Manager's current certification status card must be provided to Land
700 Manager prior to ignition. All required personnel, equipment, firebreaks and permits as established by law
701 must also be accounted for prior to ignition.

702 **3. Training/Safety Criteria**
703

704 Due to the inherent dangers of working with fire, minimum requirements must be implemented to ensure
705 that personnel are adequately trained and equipped to participate in a prescribed fire. These minimum



706 requirements apply to all participants involved in prescribed fire on PRRIP lands including PRRIP
707 personnel, burn contractors, cooperators from other agencies and students. The Contractor shall ensure
708 that all of his personnel are qualified to perform the duties of ignition, holding, patrol and mop-up as
709 defined in the Wildland Fire and Prescribed Fire Qualification System Guide published by NWCG,
710 Publication Numbers PMS 310-1 and NFES 1414 (January 2009).

711

712 Personal Protection Equipment:

713 The Contractor shall ensure that all crew members arrive at the work site with required personal
714 protective clothing and equipment, including: a serviceable National Fire Protection Association (NFPA)
715 approved fire shelter; a NFPA approved hardhat; eye protection; hearing protection; NFPA approved
716 flame resistant shirt and pants; NFPA approved leather gloves; and heavy-duty, leather, laced boots with
717 non-skid soles and tops at least eight inches high. The Contractor shall ensure the personal protective
718 clothing and equipment is operable and maintained in good repair. All personnel shall wear personal
719 protective clothing and equipment during all burning and mop-up operations. All personnel on a burn site
720 must have two-way radio communications with the burn manager and required suppression equipment.
721 Contractors are also encouraged to obtain radios that are programmable.

722

723 4. Prescribed Burn Purpose/Objectives

724

725 The burn purpose and objective for each prescribed burn will be determined by PRRIP staff. This
726 information will be conveyed to contractors before the burn is implemented to help with burn plan
727 development. In general, the burn purpose will describe an overall goal such as site preparation or hazard
728 reduction and the burn objective will identify a specific, measurable, parameter such as remove 75% of
729 available fuels. Prior to the burn, Burn Managers will evaluate the site to determine the type of ignition
730 methods, firing techniques and weather conditions needed to meet the pre-determined objective, safely
731 conduct the burn, and minimize negative effects such as duff ignition/soil damage, crown scorch, or
732 smoke management problems. This information will be included in the burn plan.

733

734 5. Prescribed Burn Plans

735

736 Burn plans will be written on a NWCG approved burn form or an alternative form approved by the
737 PRRIP Land Manager. Fully completed, legible, burn plans will be delivered to the PRRIP Land Manager
738 within one week following the completion of the burn. These plans must be signed by the Burn Manager.
739 Burn Managers will follow the PRRIP's Weather Parameter Standards (Appendix–A) when planning and
740 implementing prescribed burns. Fire weather forecasts for the appropriate county containing the burn site
741 will be used the day of the burn. These are available from the following National
742 Weather Service online sources:

743

744 Hastings:

745 <http://www.srh.noaa.gov/jax/text.php?sid=JAX&pil=FWF>

746

747 North Platte:

748 <http://www.srh.noaa.gov/productview.php?pil=TAEFWFTA&version=0>

749

750 **A copy of these forecasts must accompany the burn plan when**
751 **submitted to the PRRIP.**

752



753 The PRRIP requires that contractors keep good records of all pre-burn planning and site evaluation
 754 measures as well as actual firing techniques used during prescribed burn implementation. This will
 755 include full documentation of information such as: burn purpose and objective, Forecasted and actual
 756 weather conditions, soil moisture conditions (including soil saturation and depth to water in wetlands), the
 757 location of heavy duff layers, days since rain, and amount of rain received on the actual burn block,
 758 Keetch-Byram drought index (KBDI), etc. This information should be included in the burn plan or as an
 759 attachment. A copy of the burn plan and a site map showing burn area location, firelines, roads, and
 760 natural features shall be in the possession of the burn manager at the time of the burn. PRRIP staff will
 761 provide burn managers with a map and/or ground location point of any areas personnel should avoid.
 762 PRRIP staff may ask personnel to avoid disking, plowing or igniting fires in these areas. These sites may
 763 contain historical resources, threatened and endangered plant or animal locations, public use facilities or
 764 exotic plant infestations. Contractors will notify the PRRIP’s Land Manager within 24 hours if the
 765 following circumstances occur after the burn has been completed: 1) fire has escaped, 2) burn objectives
 766 were not met or 3) negative publicity or smoke management problems occurred.

768 6. GIS Requirements

769
 770 Contractors must submit a shapefile showing acres burned with each invoice. To receive payment, the
 771 acreage identified in shapefile must be identical to the acreage listed on the invoice to the nearest 1/10
 772 acre. PRRIP staff will field verify and make payment based on this acreage. Shapefiles will be projected
 773 to: NAD 1983 Nebraska State Plane Feet.
 774

775 WEATHER PARAMETER STANDARDS

Relative Humidity	<ul style="list-style-type: none"> • > or = 25%
Fine Dead Fuel Moisture	<ul style="list-style-type: none"> • 6% Minimum • Based on predicted fine fuel moisture (from tables) or direct measurement
Wind Speed	<ul style="list-style-type: none"> • Maximum mid-flame wind speed is 15 mph • Maximum forecast 20 ft wind speed is 18 mph
Category Day	<ul style="list-style-type: none"> • Category II in rural areas unaffected by smoke • Category III when there are smoke sensitive areas downwind
KBDI	<ul style="list-style-type: none"> • = or < 400
Palmer Drought Index	<ul style="list-style-type: none"> • At least -1
Temperature	<ul style="list-style-type: none"> • 90°F Maximum.
Smoke Management	<ul style="list-style-type: none"> • 9 mph Minimum transport wind speed • 2,000 ft Minimum Mixing Height

776
777



APPENDIX – B
PLATTE RIVER RECOVERY IMPLEMENTATION PROGRAM
FIRELINE STANDARDS

778
779
780
781
782
783
784
785
786
787
788
789
790
791
792
793
794
795
796
797
798
799
800
801
802
803
804
805
806
807
808
809
810
811
812
813
814
815
816
817
818
819
820
821
822
823
824
825

INTRODUCTION:

These Standards are designed to be used by contractors, cooperators and Platte River Recovery Implementation Program (PRRIP) employees in the planning, reviewing, approving and construction of firelines.

GUIDELINES:

A prescribed burn will not be conducted without adequate firebreaks surrounding the burn plot. The installation and maintenance of firelines along PRRIP ownership boundaries and main public use roads is primary while minimizing interior lines whenever possible. Natural and artificial firebreaks should be utilized before installing new lines. This will help minimize soil erosion, hydrologic alterations, and impacts on natural plant communities and historic or prehistoric resources. Types of natural firebreaks include: rivers, lakes, streams, wetlands, etc. Artificial firebreaks are existing disturbances, facilities or cleared areas that may include: firelines, roads, ditches, trails, utility easements, blacklines and foam.

PRRIP personnel must approve the establishment of new firelines prior to construction. This approval will consider justification of need and route of firelines. Consideration will be given to the effect of the proposed fireline route on hydrology. Fireline routes will also be assessed for threatened and endangered species, archeological sites, public access facilities and exotic plants to avoid disturbing or spreading these. The addition of new firelines should be considered only if necessary for accomplishing safe prescribed burning. When possible, firelines should be coupled with other types of firebreaks (natural/artificial) to minimize ground disturbance.

Prescribed fires that escape or become out-of-prescription are often subject to emergency plowing. On PRRIP land, the preferred method for controlling such a fire is with a brush truck or other water delivery vehicle or to let the fire burn to the nearest firebreak. If these methods cannot be safely and effectively implemented, a tractor and fire plow should be used for suppression purposes.

PROCEDURES:

Fireline Installation and Maintenance:

- a) Fireline installation should not adversely impact listed plant or animal species, archeological resources, public use facilities such as bike or hiking trails, or enable the spread of exotic plant infestations. PRRIP staff will provide maps and/or ground location points of any areas to be avoided. These sites may contain historical resources, threatened and endangered plant or animal locations, public use facilities or exotic plant infestations.

- b) The PRRIP requires that all fireline installation and maintenance work produce a flat line that does not contain berms that may block or channel water flow. Root mats or heavy vegetation should be spread out within the block to avoid fuel build-up along the edges. The PRRIP prefers that firelines be reworked and maintained using



- 826 a heavy duty (forestry) harrow. Firelines installed with a dozer blade
827 or fire plow will be reworked to yield a flat line. The use of a fireplow
828 or dozer blade to install a fireline must be approved by the PRRIP
829 Land Manager.
- 830
- 831 c) If a fire plow is used to install a fireline, or control an escaped or
832 out of prescription fire, the burn contractor must rework the plowed
833 lines before demobilizing from site.
- 834
- 835 d) If a fireplow is used to control an escaped or out of prescription
836 fire, plow depth should be no greater than required to expose
837 mineral soil and stop the fire. A map of existing firebreaks, roads,
838 natural features and avoidance areas should be in the possession of
839 the plow operator and crew members at all times.
- 840
- 841 e) Firelines will not be constructed so that they create new travel
842 corridors or paths through or around areas that are cabled, gated, or
843 fenced. If a fire line is being installed along a public use road, disking
844 must be off to one side of the road, but not in the ditch, to allow
845 vehicles to continue to use the road.
- 846
- 847 f) Firelines should follow the contour of the land when possible, to
848 avoid downslope erosion. Lines should be stabilized if subject to
849 water flow by the use of water bars or turnouts.
- 850 g) Plow and harrow depth should be kept at the minimum possible at
851 all times.
- 852
- 853 h) Width of exposed mineral soil should be 6 to 8 feet for interior
854 lines after reworking.
- 855
- 856 i) Perimeter lines are critical to ensure that fires do not leave PRRIP
857 lands and impact private property. They should be wider than interior
858 lines and should be cleared 12 to 16 feet of trees and overhanging
859 vegetation. Wider lines may be required because of adjacent
860 property with heavy fuels or residential structures. Width of exposed
861 soil should be 8 to 10 feet and the line must be reworked if newly
862 plowed.
- 863
- 864 j) Wetlands should be avoided when installing firelines. A line
865 running up to a wetland incorporating it as a fire break is the best
866 method providing it does not act as a drain to channel water out of,
867 or cause erosion into the wetland. Wetlands should be burned when
868 it is possible to mimic the historical fire frequency and when it can be
869 done without risk of an organic peat layer (duff) fire.
- 870
- 871 k) When connecting firelines to wetlands and other hydrologic
872 features such as intermittent/perennial streams, rivers, lakes,
873 sinkholes, etc., firelines should stop a minimum of 75 feet from the

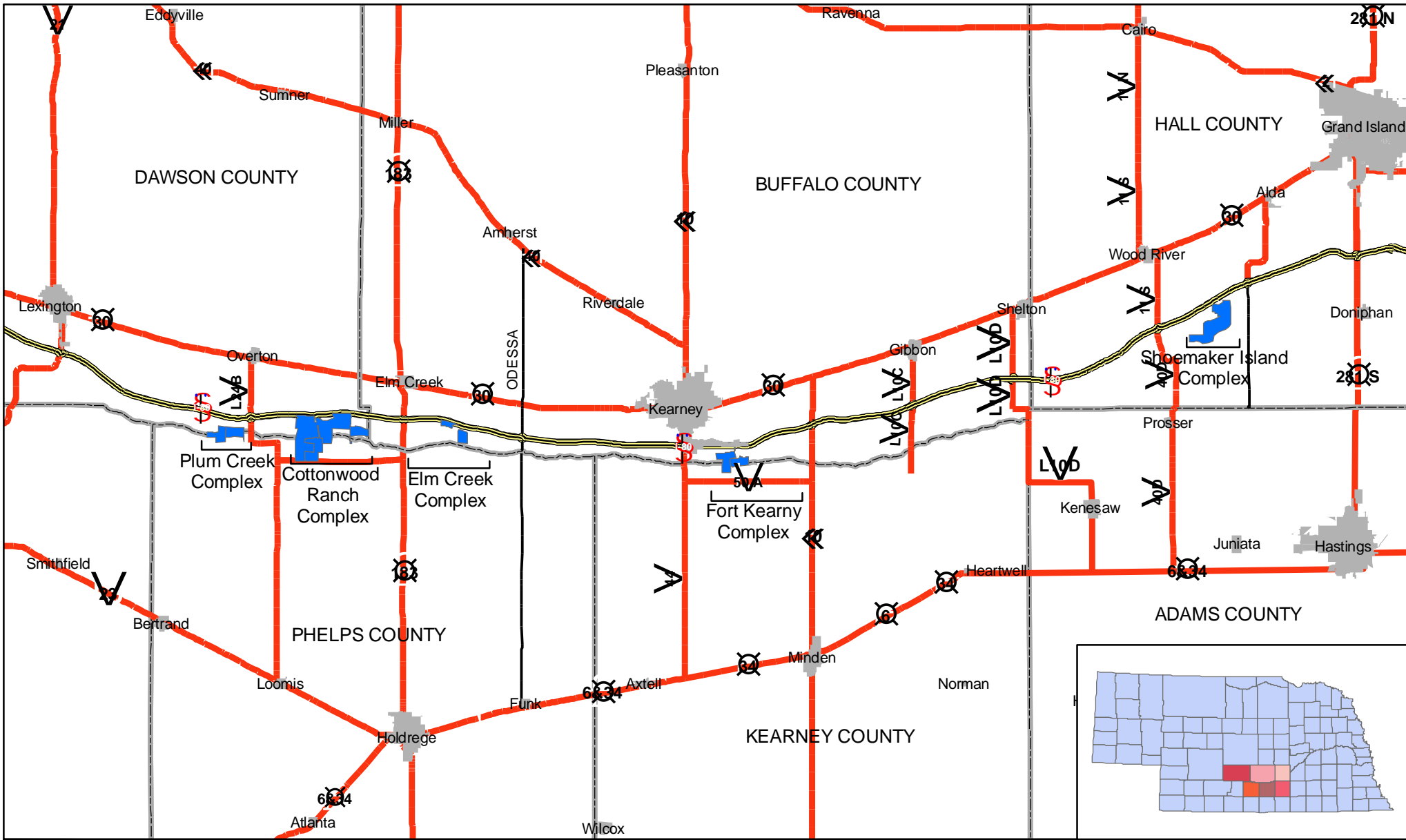


874 edge of these features. A wetline or handline can be used to tie in
875 the remaining distance.

876
877 l) Firelines should not follow the edge of a natural plant community
878 because it may disturb the ecotone and destroy rare plants that
879 often occupy this zone.

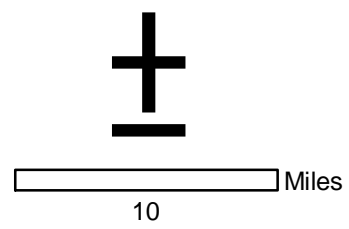
880
881 m) Primary firelines such as tract boundaries should be maintained
882 at least once a year by disking if needed. Adjacent areas may
883 require mowing. When possible, fireline maintenance should occur
884 during early growing season.

885 |
886



Legend

 Property Boundary

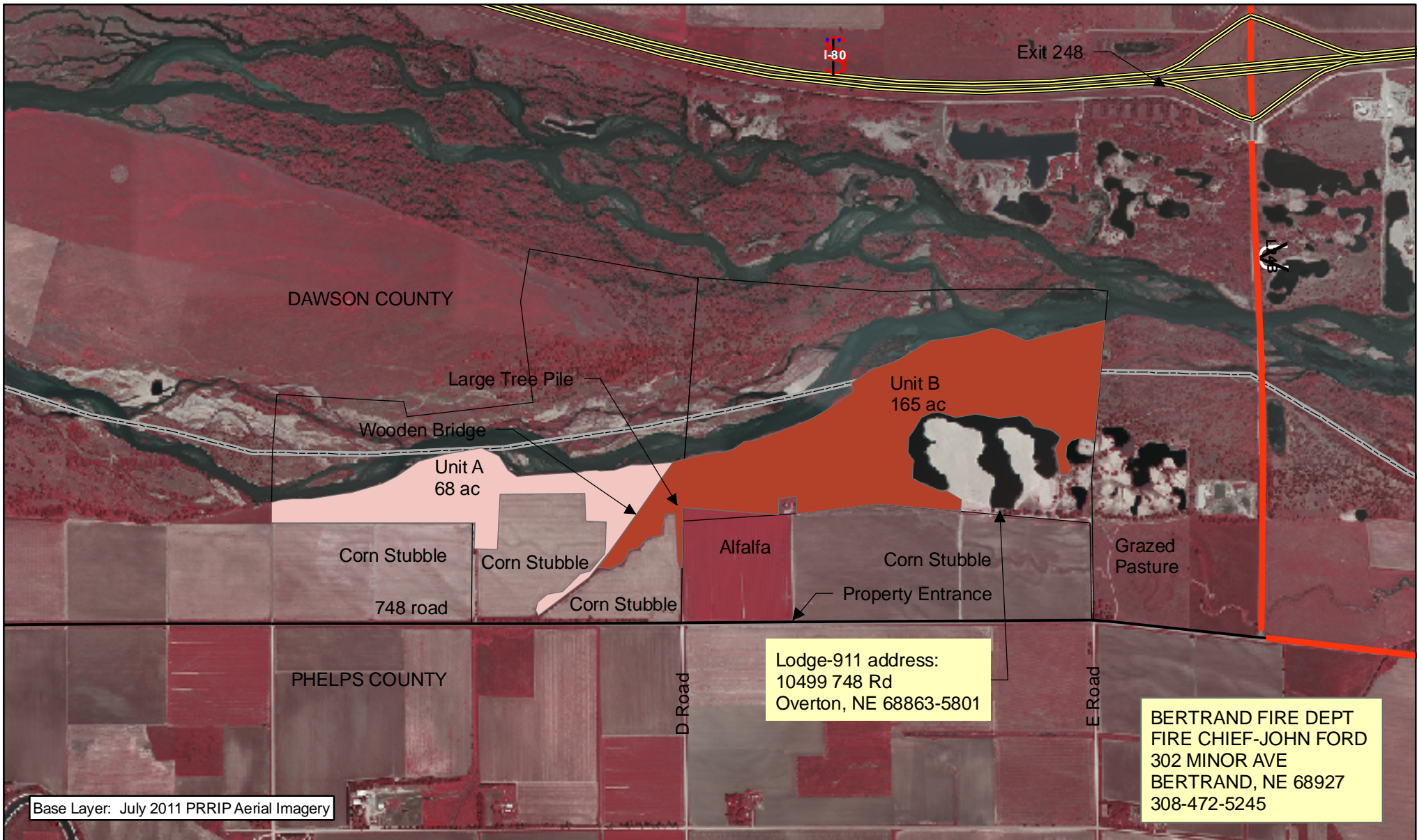


HABITAT COMPLEXES

FY 2012
SPRING
BURN UNITS

Date: 10/5/2011
By: TRT

Figure 1



Legend

Property Boundary

County

PRRIP_Rx_Fire

Unit

A

B



1 Miles

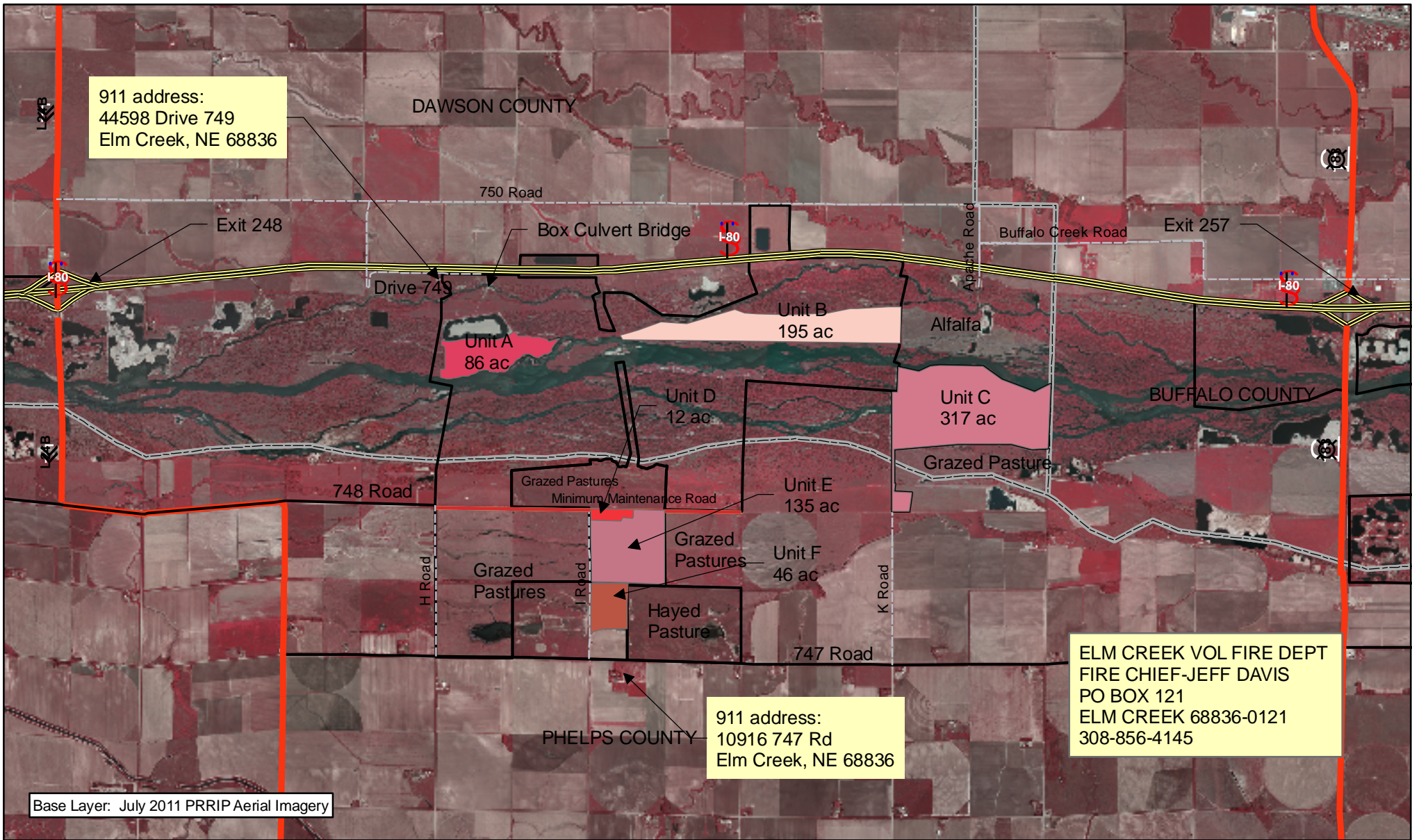
1

PLUM CREEK COMPLEX
FY 2012
SPRING
BURN UNITS

Date: 10/5/2011

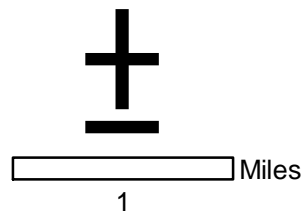
By: TRT

Figure 2



Legend

- Property Boundary
- County
- Transmission Line
- PRRIP_Rx_Fire**
 - C
 - D
 - E
 - F
- Unit**
 - A
 - B

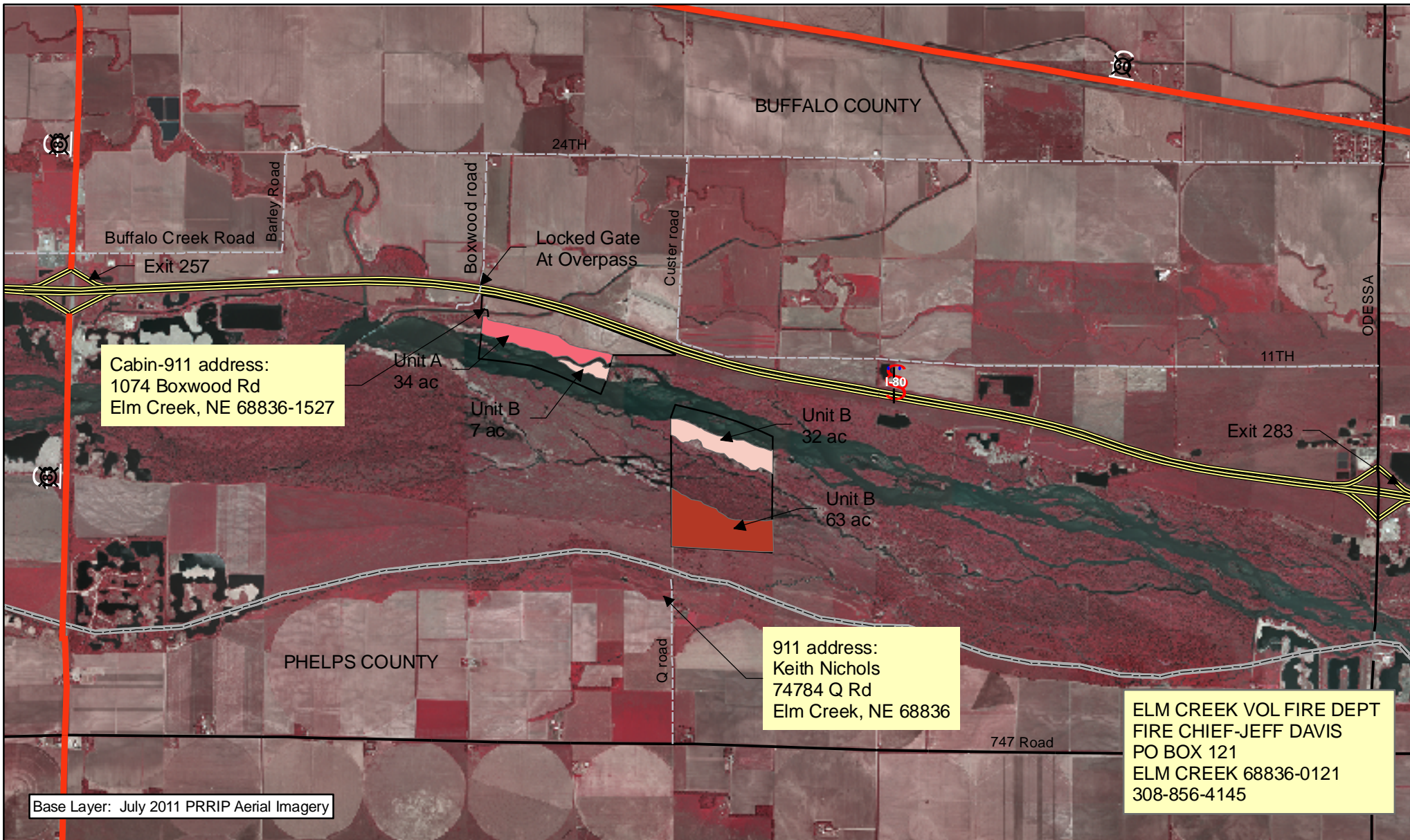


COTTONWOOD RANCH COMPLEX

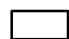




FY 2011
SPRING
BURN UNITS

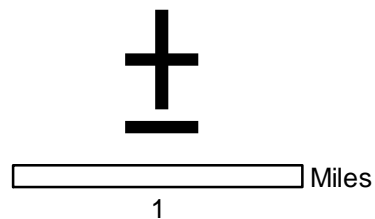
Date: 10/5/2011
By: TRT

Figure 3

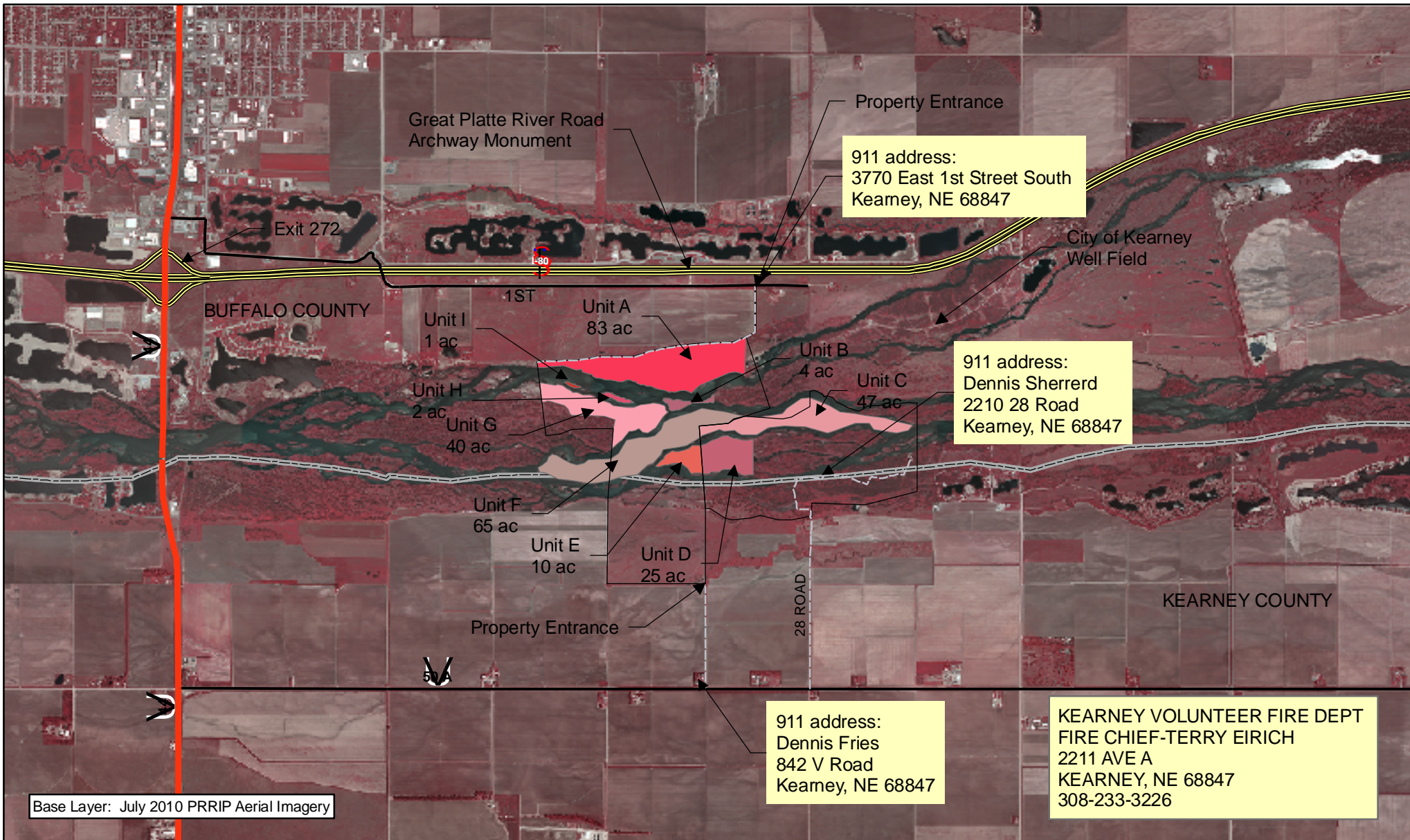


Legend

-  Property Boundary
-  County
- PRRIP_Rx_Fire**
- Unit**
-  A
-  B
-  C


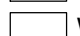



ELM CREEK COMPLEX
 FY 2012
 SPRING
 BURN UNITS
 Date: 10/5/2011
 By: TRT
 Figure 4



Legend

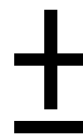
Property Boundary

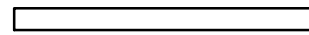
-  Sherrerd Easement
-  Wyoming Tract
-  County

PRRIP_Rx_Fire

Unit

- | | |
|---|---|
|  A |  E |
|  B |  F |
|  C |  G |
|  D |  H |
| |  I |



 Miles

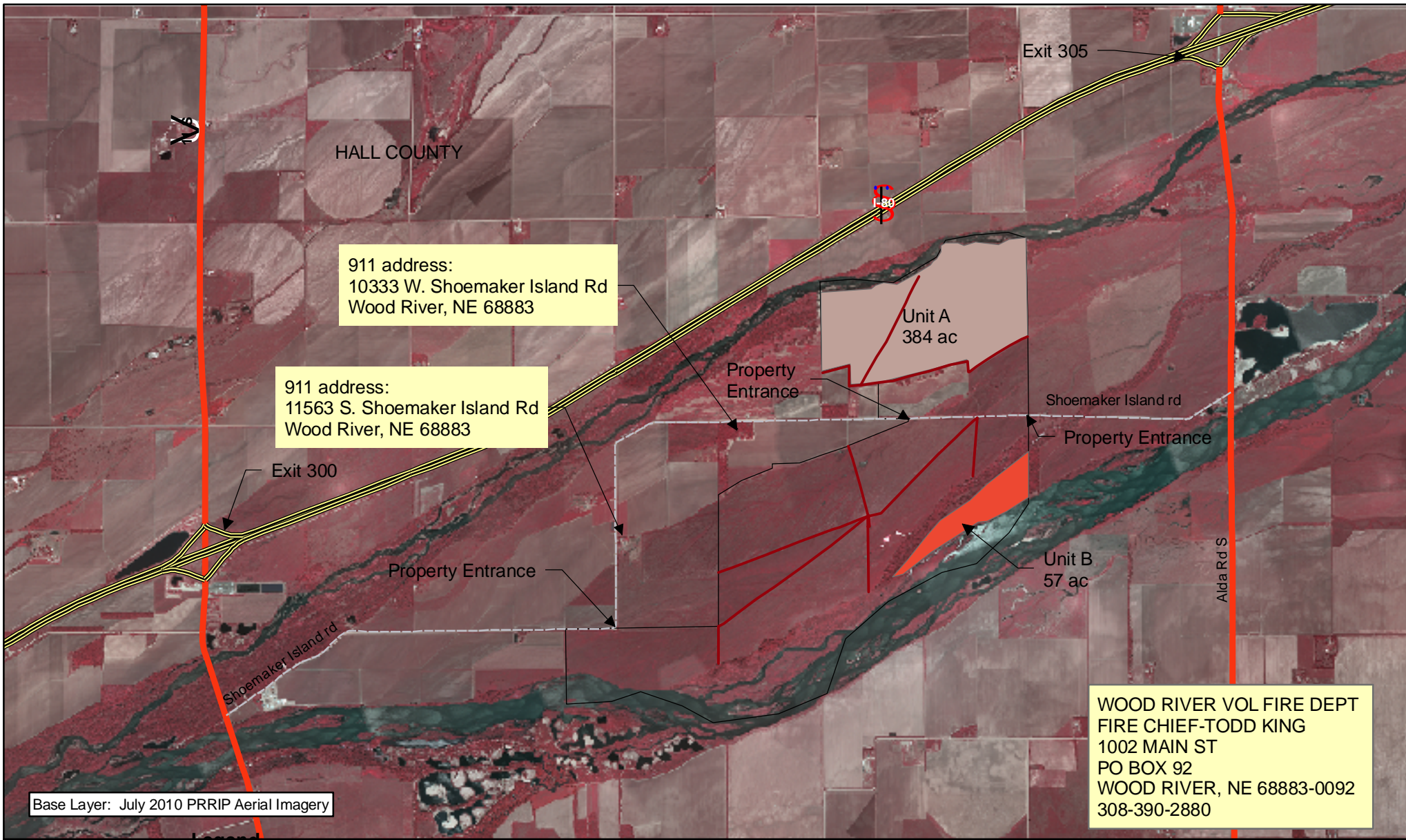
1

**FORT KEARNY COMPLEX
FY 2012
SPRING
BURN UNITS**

Date: 10/6/2011
By: TRT

Figure 5





Legend

Property Boundary



— Cross Fence

PRRIP_Rx_Fire

Unit

■ A

■ B



1 Miles

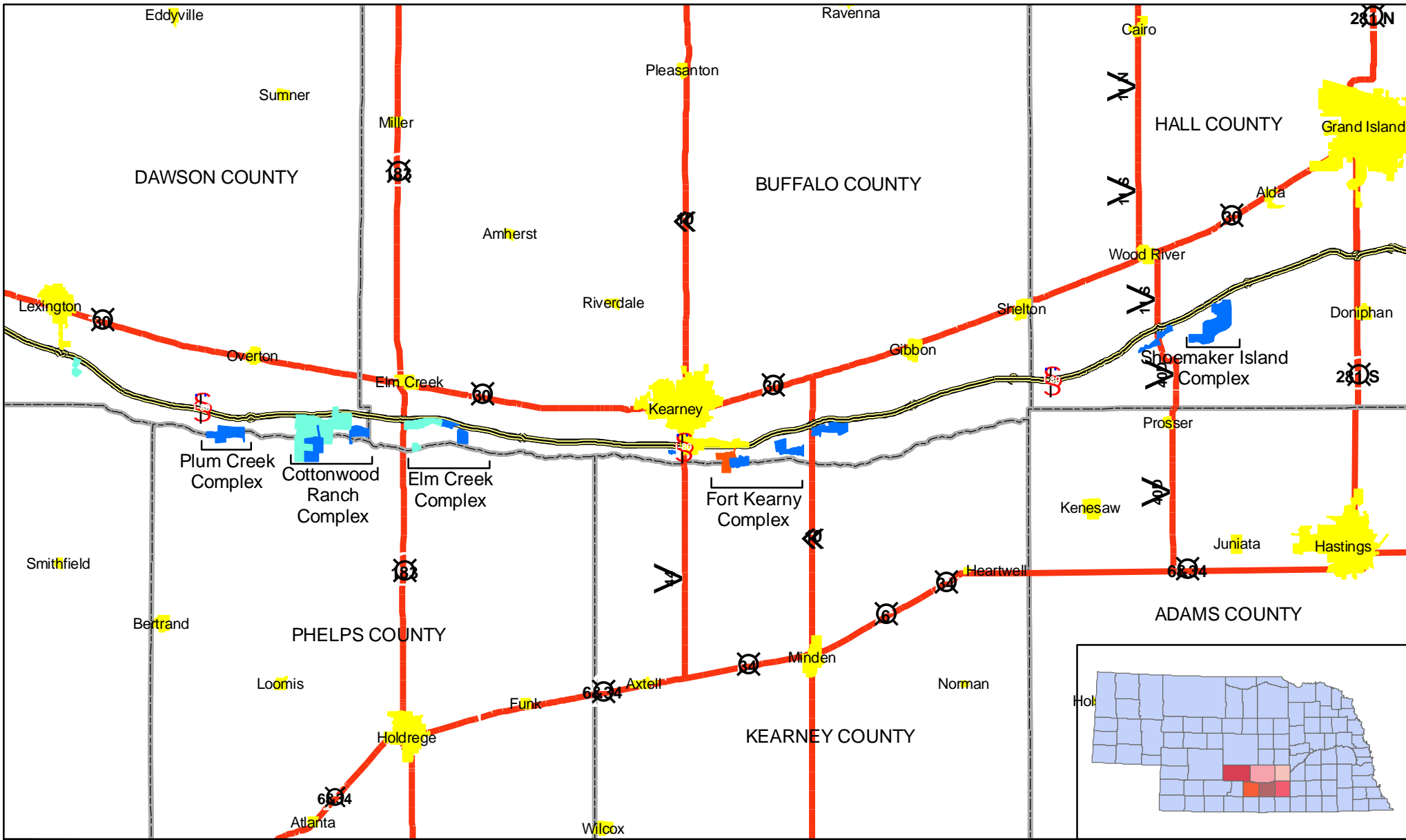
1

**SHOEMAKER ISLAND
COMPLEX
FY 2012
SPRING
BURN UNITS**

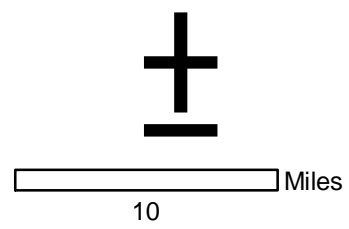
Date: 10/6/2011

By: TRT

Figure 6



- Legend**
- Property Boundary OWNERSHIP**
- Wyoming
 - PRRIP
 - NPPD



COMMUNITIES AT RISK
 FY 2012
 SPRING
 BURN UNITS
 Date: 10/5/2011
 By: TRT

Figure 7