



**REQUEST FOR QUOTATION**

**PROJECT:** (P19-002) Tract 2012002 Tree Removal & Erosion Repair  
**LOCATION:** PRRIF Property 2012002  
**NEAR:** Elm Creek, Nebraska  
**REQUEST DATE:** July 30, 2019  
**MANDATORY SITE**  
**SHOWING\*:** **August 9, 2019 – 1:30 pm central**  
**CLOSING DATE:** August 16, 2019 – 5:00 pm central  
**START OF PROJECT:** August 19, 2019  
**POINT OF CONTACT:** Tim R. Tunnell, Senior Land Manager  
 Headwaters Corporation  
 4111 4<sup>th</sup> Ave, Suite 6  
 Kearney, NE 68845  
 Mobile: (402) 219-3883  
[tunnellt@headwaterscorp.com](mailto:tunnellt@headwaterscorp.com)

*\*Contact Tim Tunnell prior to August 8 at 5:00 pm to confirm your attendance to the mandatory site showing.*

The undersigned acknowledges receipt of the following plans and specifications:

- # 1 (  ) Whooping Crane Incidental Take Avoidance Procedures
- # 2 (  ) Sheet 1 - Cover
- # 3 (  ) Sheet 2 – Clear & Grub
- # 4 (  ) Sheet 3 – Erosion Repair

**PROJECT DESCRIPTION:**

The contractor will be responsible for clearing and grubbing trees and brush as identified on sheet 2. Trees and brush will be relocated to the designated burn pile and be burned and buried onsite. After site clean-up and burial, site will be graded, disked or otherwise cleaned such that the site can be re-seeded. The seeding is **NOT** the responsibility of the contractor.

The contractor will be responsible for removing sediment from erosion and placing in eroded areas and smoothing of the area as identified on sheet 3. Topsoil and/or crushed concrete will be added to roadway and pasture entrance. Any material brought from offsite for repair will be reimbursed to contractor with appropriate receipts. Quote should be for removing existing



sediment and replacing in washed area and include final grading and pasture entrance installation.

Contractor is responsible for obtaining appropriate permits and to call the “Diggers Hotline” number to verify any conflicting utilities prior to beginning any work.

**Please include below a short narrative explaining your approach to this project. Identify your method for completion of the work items with specific details of type and size of all equipment that will be used to complete this work:**



The undersigned, having examined the drawings and investigated the local conditions affecting the project work, hereby proposes to perform the project in accordance with the contract documents for the following rates:

THIS QUOTE SUBMITTED ON DATE: \_\_\_\_\_

Item No.	Description	Unit	Estimated Quantity	Bid Unit Price	Bid Price
001	Mobilization and Demobilization	LS	1	\$___N/A___	\$_____
002	Tree/ Brush Removal	AC	4.5	\$_____	\$_____
003	Tree Pile Removal	EA	3	\$_____	\$_____
004	Erosion Repair*	LS	1	\$___N/A___	\$_____
TOTAL \$					_____

\* Estimate will not include offsite material used to repair erosion. Material purchased will be reimbursed to contractor with submission of appropriate receipts with final invoice for payment.



PROJECT DURATION:

The Contractor, under this agreement, shall commence this work as soon as possible upon receipt of NOTICE TO PROCEED (anticipated around August 19, 2019). **If work is done during the period of October 9 and November 15 contractor must adhere to the “Whooping Crane Incidental Take Avoidance Procedures” or shut down completely during this time period.** Work should be completed as soon as possible, but no later than February 1, 2020.

TOTAL QUOTE PRICE \_\_\_\_\_  
\_\_\_\_\_ dollars (\$) )

WORK COMPLETION DATE: \_\_\_\_\_

Submitted by: \_\_\_\_\_  
(Company)

\_\_\_\_\_  
(Individual – Print)

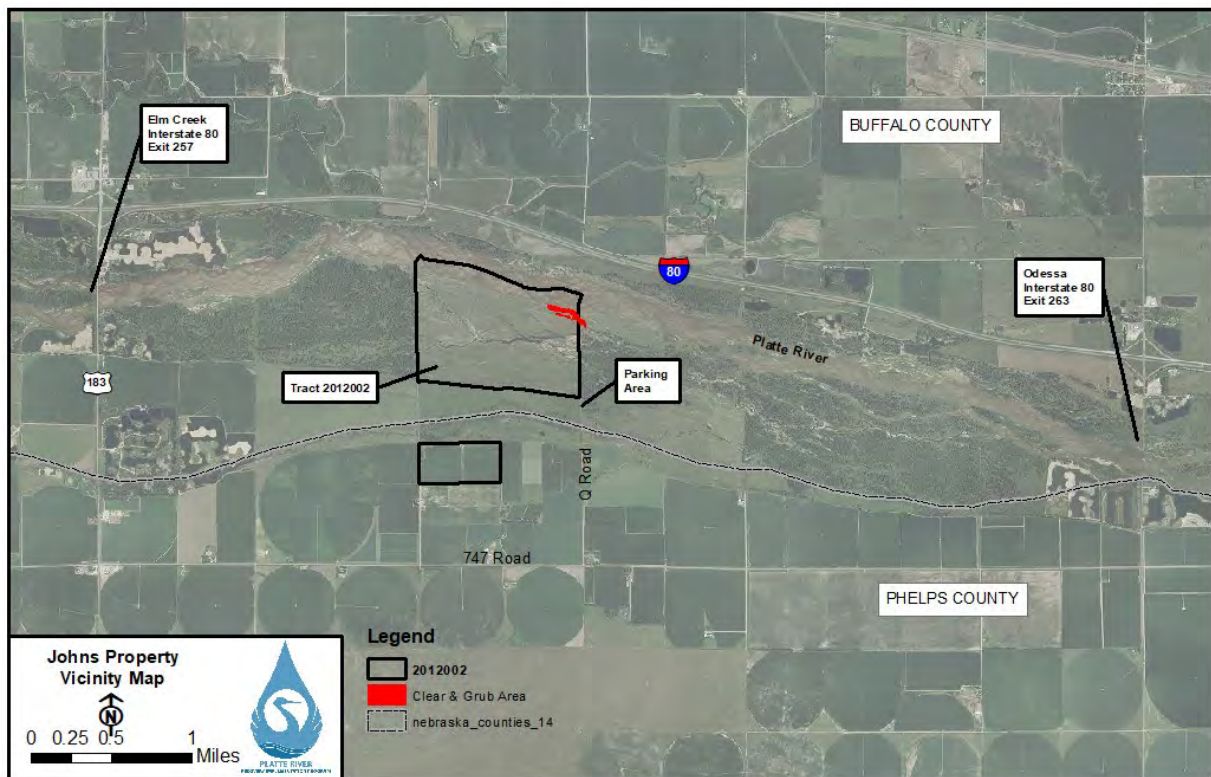
\_\_\_\_\_  
(Sign/Date)

# Directions to MANDATORY Pre-Bid Meeting

**Date and Time:** Friday, August 9, 2019 at 1:30 PM CT

**Location:** Tract 2012002

**Map:** .



---

## From I-80 Exit 257 (Elm Creek):

Travel 2.25 miles south on Highway 183, turn east onto Rd 747 travel 3 miles, turn North onto Q Rd and travel 1 mile to parking area.

## From I-80 Exit 263 (Odessa):

Travel 1.25 miles south on Highway 10B (T Rd), turn west onto Rd 747 travel 3.5 miles, turn North onto Q Rd and travel 1 mile to parking area.



**PLATTE RIVER RECOVERY IMPLEMENTATION PROGRAM  
Whooping Crane Incidental Take Avoidance Procedures**

1. Between the dates of March 6 and April 29, or October 9 and November 15, the CONTRACTOR will not begin work within 0.25 miles of the Platte River channel until one of the following requirements has been met each day: 1) The CONTRACTOR observes the airplane conducting whooping crane surveys during their daily flights over the work area without circling back to verify a whooping crane sighting; 2) it is at least one (1) hour after sunrise and the CONTRACTOR has visually confirmed there are no whooping cranes or large white birds in the work area; or 3) the Executive Director’s Office (EDO) has confirmed the lack of whooping cranes in the work area. If the CONTRACTOR has any suspicion or question as to whether or not a whooping crane is present in the area, they will not start work until confirmation is made by the EDO or the bird(s) are observed leaving on their own accord by the CONTRACTOR who has reported the observation to the EDO and has been granted permission to begin work. *The CONTRACTOR will contact the EDO immediately by telephone any time they suspect they may have observed a whooping crane; no other contacts will be made until approved by the EDO.* The primary and secondary EDO points of contact for potential whooping crane sightings are:

**PRIMARY CONTACT**

Dr. David Baasch  
 Mobile: (308) 390-0456  
 Office: (308) 237-5728  
[baaschd@headwaterscorp.com](mailto:baaschd@headwaterscorp.com)

**SECONDARY CONTACT**

Jason Farnsworth  
 Mobile: (308) 991-7602  
 Office: (308) 237-5728  
[farnsworthj@headwaterscorp.com](mailto:farnsworthj@headwaterscorp.com)

2. The PROGRAM conducts daily whooping crane surveys by flying an airplane up the river at an elevation of 750 ft. starting one-half (1/2) hour before sunrise when conditions allow. When the plane observes a white object they circle around to determine what it is. If a whooping crane is observed, they notify the EDO in order for the EDO to obtain a confirmation of the sighting from the ground. If the plane flies over the work area without circling, then there likely are not any whooping cranes in the area; however, the CONTRACTOR must visually confirm there are no whooping cranes or large white birds in the work area prior to beginning work each day. The EDO will contact the CONTRACTOR immediately by telephone if a potential whooping crane is identified within the area they are conducting work.
3. If the CONTRACTOR observes a whooping crane or what they suspect might be a whooping crane, the field crew must leave the area immediately, notify the EDO, and not return until permission has been granted by the EDO.
4. Between the dates of March 6 and April 29, or October 9 and November 15, the CONTRACTOR will end all activities within 0.25 miles of a Platte River channel two hours prior to sunset unless otherwise approved by the EDO. All equipment used by the CONTRACTOR will be parked and stored at least 0.25 miles from the nearest Platte River channel and behind a tree line when available.

ITEM	DESCRIPTION	UNITS	PRELIM QUANTS	FINAL QUANTS
001	MOBILIZATION	LS	1	
002	CLEARING AND GRUBBING	AC	4.5	
003	BURN & BURY	EA	3	
004	EROSION REPAIR	LS	1	

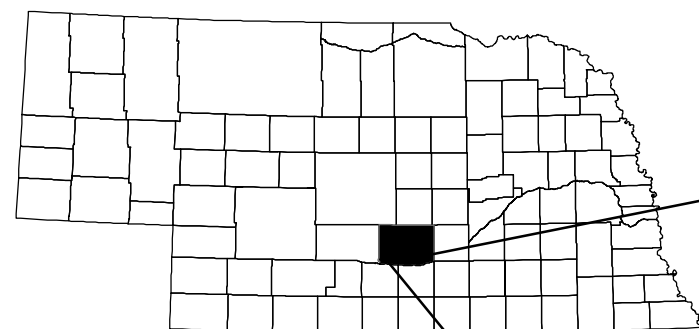
**PLATTE RIVER RECOVERY IMPLEMENTATION PROGRAM**  
**PROPERTY 2012002**  
**TREE CLEARING & EROSION REPAIR**  
**IN BUFFALO COUNTY, NE**

**SPECIFICATIONS**

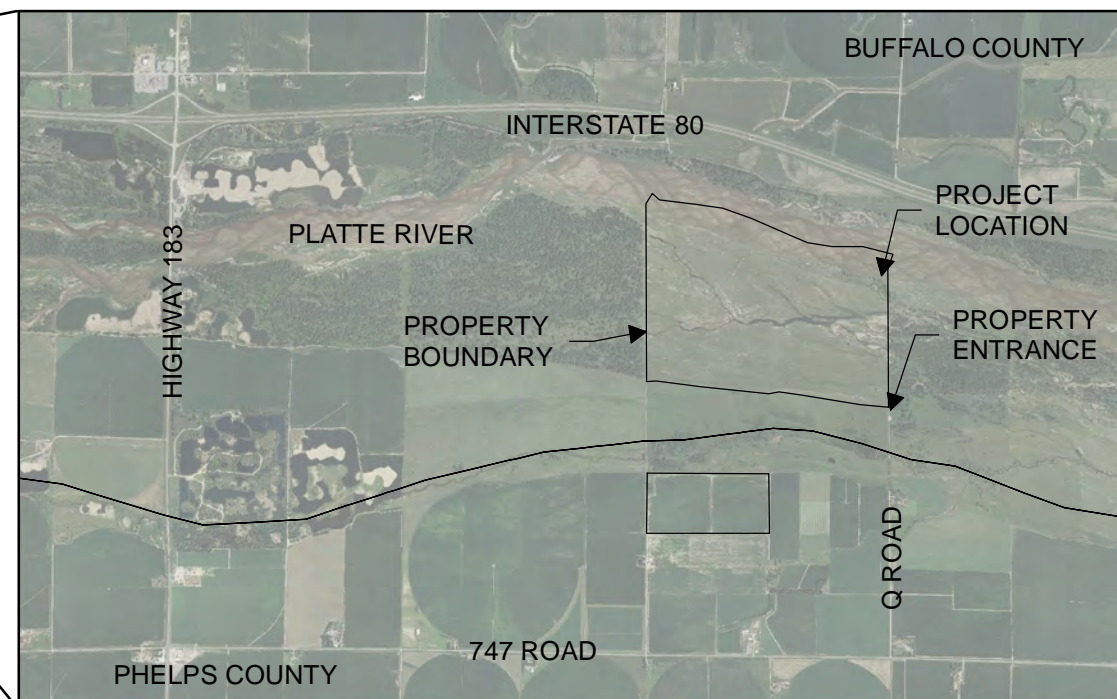
- CS-01 MOBILIZATION AND DEMOBILIZATION
- CS-02 CLEARING AND GRUBBING

**INDEX**

- 1 COVER SHEET
- 2 CLEARING AND GRUBBING
- 3 EROSION REPAIR



**PROJECT LOCATION**



**CAUTION**

The Platte River Recovery Implementation Program will not be responsible for, or liable for, unauthorized changes to, or uses of these plans. All changes to the plans must be in writing and must be approved by the Program.



PROJECT NO. 19-002		
PROPERTY 2012002 TREE CLEARING & EROSION REPAIR		
<b>COVER SHEET</b>		
SHEET NO: <b>1 of 3</b>	DATE: 06/20/19	DRAWN BY: TRT

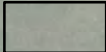

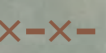

**NOTES:**

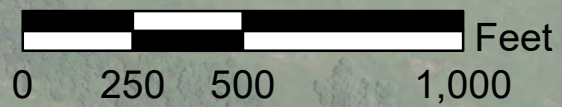
- 1) The contractor will clear and grub all woody vegetation within hatched boundaries. All cleared material will be burned and buried within the limits of the cleared and grubbed area or at designated areas.
- 2) The Project Engineer will flag the limits of tree clearing for the contractor prior to beginning of work.
- 3) It is the contractor's responsibility to call the "Diggers Hotline" number to verify any conflicting utilities prior to beginning any work.




Clear & grub all woody vegetation  
(Approx 4.5 acres)

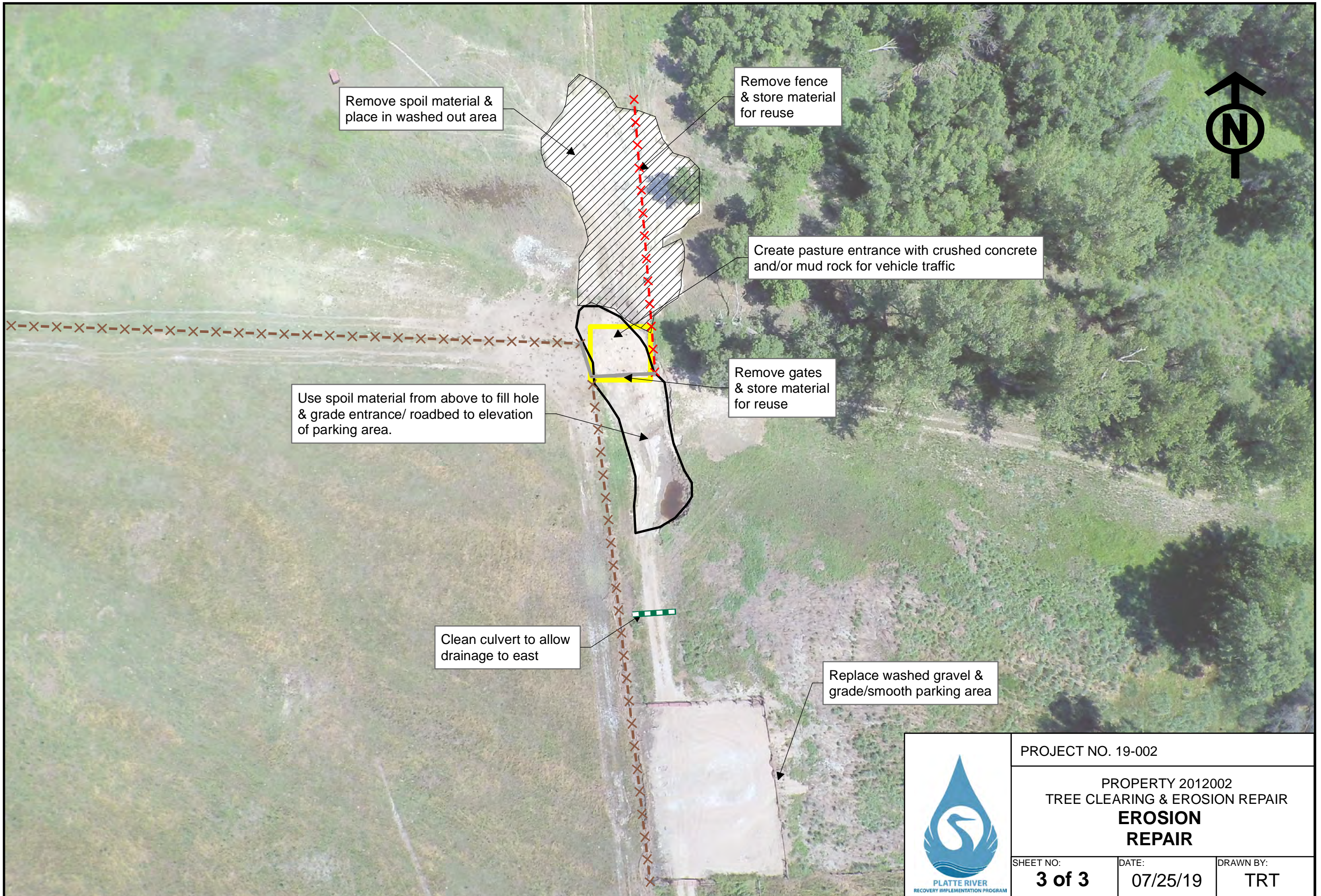
Location of Tree pile (s) for burning.  
Stumps will be buired, relocated or left if unable  
to bury.

-  Property Boundary
-  Clear & Grub Area
-  Johns\_North\_fence
-  Tree pile burn & bury area



	PROJECT NO. 19-002		
	PROPERTY 2012002 TREE CLEARING & EROSION REPAIR <b>CLEARING &amp; GRUBBING</b>		
SHEET NO: <b>2 of 3</b>	DATE: 06/20/19	DRAWN BY: TRT	





Remove spoil material & place in washed out area

Remove fence & store material for reuse

Create pasture entrance with crushed concrete and/or mud rock for vehicle traffic

Use spoil material from above to fill hole & grade entrance/ roadbed to elevation of parking area.

Remove gates & store material for reuse

Clean culvert to allow drainage to east

Replace washed gravel & grade/smooth parking area



<p>PLATTE RIVER RECOVERY IMPLEMENTATION PROGRAM</p>	PROJECT NO. 19-002		
	PROPERTY 2012002 TREE CLEARING & EROSION REPAIR <b>EROSION REPAIR</b>		
	SHEET NO: <b>3 of 3</b>	DATE: 07/25/19	DRAWN BY: TRT