



REQUEST FOR BIDS (RFB)

2020-2022 Chemical Application Services

PLATTE RIVER RECOVERY IMPLEMENTATION PROGRAM

Office of the Executive Director
4111 4th Avenue, Suite 6
Kearney, Nebraska 68845

February 17, 2020



Contents

I. OVERVIEW 3

II. WORK DESCRIPTION & SCOPE OF WORK..... 3

III. CHEMICAL APPLICATION TIMING AND PERFORMANCE 4

IV. PROGRAM LANDS 6

V. BID ITEMS..... 8

VI. FIELD AND OFFICE EQUIPMENT 8

VII. CONTRACT TERMS..... 8

VIII. SUBMISSION REQUIREMENTS 9

IX. BID RESPONSE FORMS 11

Appendix A – Nebraska Noxious Weed List

Appendix B – Nebraska Invasive Weed Watch List

Appendix C –Chemical Management Form

Appendix D – Figures



**PLATTE RIVER RECOVERY IMPLEMENTATION PROGRAM
REQUEST FOR BIDS (RFB)**

SUBJECT: 2020-2022 Chemical Application Services
REQUEST DATE: February 17, 2020
PRE-BID MEETING: March 2, 2020 – 1:00 pm CST
CLOSING DATE: March 9, 2020 – 5:00 pm CST
POINT OF CONTACT: Tim R. Tunnell, Senior Land Manager
Headwaters Corporation
tunnellt@headwaterscorp.com

I. OVERVIEW

The Platte River Recovery Implementation Program (“Program” or “PRRIP”) was initiated on January 1, 2007 between Nebraska, Wyoming, Colorado, and the Department of the Interior to address threatened and endangered species issues in the central and lower Platte River basin. The species considered in the Program, referred to as “target species”, are the whooping crane, piping plover, interior least tern, and pallid sturgeon.

A Governance Committee (GC) reviews, directs, and provides oversight for Program activities. The GC is comprised of one representative from each of the three states, three water user representatives, two representatives from environmental groups, and two members representing federal agencies. The GC has named Mr. Jason Farnsworth to serve as the Program Executive Director (ED). Headwaters Corporation staff are located in Nebraska and Colorado and are responsible for assisting in carrying out Program-related activities.

One of the major components of Program implementation is acquisition and management of 10,000 acres of habitat for the benefit of the target species. To date, approximately 13,225 acres have been acquired and are being managed by the Program’s Executive Director’s Office (EDO) Staff. The purpose of this request is to obtain qualified and licensed contractors to provide Chemical Application Services efficiently, effectively and in a timely manner to treat noxious and invasive weeds in Program owned and/or managed grasslands and maintain bare ground at off-channel sand and water nesting areas (OCSW) for target species. **As such, the GC is requesting bids for a three- year contract from qualified contractors for 2020-2022 chemical application services to be performed starting April 1 and ending on or around November 15 of each year.**

II. WORK DESCRIPTION & SCOPE OF WORK

Work Description

The Program is requesting bids from experienced contractors for chemical application services in 2020, 2021 and 2022. All applicators must be certified with the Nebraska Department of Agriculture as a Commercial Applicator, categories needed are: General, Ag. Plant and Aquatic. The performance period will begin on April 1 and will end on or around November 15. Bare ground treatments on OCSW sites will require two applications; one application in spring- typically April 1-April 15 prior to nest initiation of target species and a follow-up application in late summer after all chicks have fledged- typically August 15-September 1. Control of noxious weeds in Program owned and/or managed grassland sites will typically require 3-4 trips, as needed, through sites during the year. Generally, trips will be in the early spring, early summer, late summer, and fall prior to first frost.



48
49
50
51
52
53
54
55
56
57
58
59
60
61
62
63
64
65
66
67
68
69
70
71
72
73
74
75
76
77
78
79
80
81
82
83
84
85
86
87
88
89
90
91
92
93
94
95

Scope of Work

The Contractor must have sufficient availability to fully utilize weather windows for chemical applications at Program lands which are distributed along a 90-mile reach of the Platte River in central Nebraska. The Contractor will be responsible for all labor, materials, equipment, tools, transportation and supplies required to complete the work. All applicators must be certified with the Nebraska Department of Agriculture as a Commercial Applicator, categories needed are: General, Ag. Plant and Aquatic.

Bare ground treatments on OCSW sites will require one application in late spring- typically April 1-April 15 prior to nest initiation of target species and a follow-up application in late summer after all chicks have fledged- typically August 15-September 1. Areas will require broadcast spraying to ensure full spray coverage to the water's edge with both spring and fall applications. Equipment and spraying operations shall minimize rutting and ground surface disturbance. *Close communication between Program staff and contractors must occur in order to avoid conflicts with spraying and target species. It is the responsibility of the Contractor to coordinate with Program staff on the status of use of target species prior to mobilization to the site for spraying.*

Noxious weed control will typically require 3-4 trips, as needed, through grassland sites during the year. Generally, trips will be in the early spring, early summer, late summer, and fall prior to first frost. A list of state of Nebraska noxious weed and Watch list species can be found in Appendix A and B.

III. CHEMICAL APPLICATION TIMING AND PERFORMANCE

Contractor will be ready to begin work as soon as contract is signed. Contractor will proceed to complete all the work as quickly and efficiently as possible while maintaining the quality standards listed in the Scope of Work. The Program Land Manager may stop work and order the removal and/or replacement of any equipment if the equipment is not working or calibrated properly. Contractor then has 48 hours to replace the equipment with an acceptable substitute and remove the inadequate equipment. The Program Land Manager may prohibit chemical application during adverse weather conditions (heat, cold, dry, wet, etc.). If adverse weather is a problem, Contractor must furnish additional personnel and equipment to make up for lost time and ensure timely completion.

Contractor must guarantee a minimum of 100% coverage of the bare ground treatment areas and at least 95% mortality of targeted vegetation within the areas. Acceptable coverage will be determined within five days of application using several random spot inspections. Contractors are required to use marking dye to help with this process. Signs of mortality will be documented at random spot inspection sites beginning three weeks following application. If coverage and/or mortality rates are not met, the Program may require Contractor to retreat the areas at Contractor's expense and at no additional cost to the Program. No chemical herbicide applications will exceed the label rates on the herbicide containers. All requirements, including state and/or local requirements, listed on the herbicide label are to be followed. Failure to comply with label instructions is a violation of federal and/or state laws. Contractor is liable for any penalty, fines, or damages resulting from misuse of herbicides. Unless otherwise specified, Contractor will supply and apply all chemical herbicides, adjuvants, and other materials to ensure an effective kill of the target vegetation and will be reimbursed for the chemical used.

Contractor is expected to minimize broadcast spraying and use spot-spraying as primary control method of noxious and invasive weeds. However, broadcast spraying is allowable when infestations are larger than 0.25 acre. Contractor is expected to prevent overspray, drift, and/or nontarget damage to surrounding vegetation, open water, structures, and/or facilities. No less than 100% of all target vegetation must be



96 treated, and no less than 95% of the treated vegetation must be killed for the control method to be considered
97 acceptable by the Program.

98
99 The Program is implementing a “Come Clean, Leave Clean” standard. All equipment used on Program
100 lands, including tractors, ATVs, UTVs, trucks, trailers, and/or Argos need to be free of any plant material.
101 The Program Land Manager will delineate a designated cleaning area on each tract for contractors to clean
102 their equipment.

103
104 A Nebraska Department of Agriculture licensed supervisor shall be designated by Contractor as the field
105 supervisor and remain onsite during all chemical application projects. The licensed supervisor is responsible
106 to ensure the following:

- 107
- 108 • Chemical pesticides must be kept in original containers until mixing. All mixtures should
- 109 have temporary labels that list the trade name and rates of chemicals and any adjuvants
- 110 within the spray container.
- 111 • The licensed supervisor must readily have available during application copies of all
- 112 chemical pesticides labels and Material Safety Data Sheets (MSDS) that are being
- 113 applied.
- 114 • During mixing and application, all recommended Personal Protective Equipment (PPE)
- 115 will be properly worn to minimize applicator exposure to chemicals. All measuring cups
- 116 should be rinsed and the effluent poured into the tank/bottle mixture.
- 117 • Chemicals and any rinse material from chemical containers will be applied to specific
- 118 areas; run-off of any chemical substance is not acceptable.
- 119 • Herbicides that are mixed, transferred, or temporarily stored while on Program lands will
- 120 be done so at designated staging areas. Any and all containers that contain pesticide or
- 121 pesticide residues will be removed from Program lands once the chemical application is
- 122 complete.
- 123 • Herbicides will not be applied during adverse or non-optimal weather conditions for the
- 124 application method. Any weather condition, including heat, wind, or precipitation, that
- 125 minimizes the effectiveness of the herbicide or increases the exposure and/or potential
- 126 for drift to non-target vegetation, personnel, or objects will not be tolerated.
- 127 • Emphasis must be placed on ensuring the application will minimize exposure to people,
- 128 facilities and the surrounding environment. Avoid any non-target exposure.
- 129

130 The supervisor must be able to correctly identify the targeted species. A representative from Program staff
131 will meet with the licensed supervisor at the beginning of each project to discuss treatment area and
132 prescriptions and any special restrictions. Contractor is required to provide Program staff with the following
133 upon request by the Program Land Manager:

- 134
- 135 • List of chemical herbicide trade names and the rates used to produce all chemical
- 136 mixtures applied. This list should also include any adjuvants or surfactants included in
- 137 the mixture.
- 138 • A “PRRIP Chemical Management Form” (Appendix C) is required after
- 139 completion of treatment on each individual infestation, local area, or workday depending
- 140 on time spent at a particular area.
- 141 • A map depicting estimated spray coverage area and GPS data of coverage area for the invoice.
- 142
- 143



144 **IV. PROGRAM LANDS**

145 Program lands are generally organized into approximately 1,000 to 3,000 acre blocks referred to as habitat
146 complexes. There are eight habitat complexes distributed across the project area, containing the majority
147 of land (**Appendix D; Figure 1**). Additionally, there are 2 non-complex wetland sites that have been
148 associated with a complex. There are also two OCSW sites located within habitat complexes and three
149 stand-alone OCSW sites. For the purposes of this contracting process, the OCSW sites have been split in
150 to east and west groupings.

151
152 The following sections of the scope of work provide specific information about each habitat complex:

153
154 Plum Creek Complex

155 Contractors should be aware of the following points:

- 156
157 1. Plum Creek Complex is located less than 1 mile to the south of Interstate 80 between the towns of
158 Lexington and Overton, NE.
159
160 2. Plum Creek complex is approximately 722 acres, contains 2 tracts of land and is 2 miles long with the
161 majority of the land located on the south side of the Platte River. There is 1 additional wetland tract,
162 approximately 100 acres, located in close proximity to the southwest of the complex (**Figure 2**).
163
164 3. There is a 21 acre OCSW site located in the middle of Tract 2009003.

165
166 Cottonwood Ranch Complex

167 Contractors should be aware of the following points:

- 168
169 1. Cottonwood Ranch Complex is located less than 1 mile to the south of Interstate 80 between the towns
170 of Overton and Elm Creek, NE.
171
172 2. Cottonwood Ranch complex is approximately 3,528 acres with an additional 530 acres of water project
173 property, contains 7 tracts of land and is 5 miles long with the majority of the land located on the south side
174 of the main channel of the Platte River. There is 1 additional wetland tract, approximately 153 acres, located
175 in close proximity to the northwest of the complex (**Figure 3**).
176
177 3. There is a 16 acre OCSW site and a 5 acre island with the main channel located in the middle of Tract
178 2008002.

179
180 Elm Creek Complex

181 Contractors should be aware of the following points:

- 182
183 1. Elm Creek Complex is located less than 1/4 mile to the south of Interstate 80 between the towns of Elm
184 Creek and Odessa, NE.
185
186 2. Elm Creek complex is approximately 1,124 acres, contains 5 tracts of land and is 2 miles long with 3
187 tracts being located on the north side of the Platte river and the others are located on the south side of the
188 Platte River (**Figure 4**).
189

190
191



192 Pawnee Complex

193 Contractors should be aware of the following points:

- 194
- 195 1. The Pawnee Complex is located less than 1/4 mile to the south of Interstate 80 between the towns of
196 Odessa and Kearney, NE.
 - 197
 - 198 2. The Pawnee complex is approximately 682 acres, contains 4 tracts of land and is 3 miles long. Two tracts
199 are located on the south side of the Platte River and one is on the north side (**Figure 5**).
 - 200
 - 201 3. There is a 17 acre OCSW site located at Tract 2010002.

202

203 Fort Kearny Complex

204 Contractors should be aware of the following points:

- 205
- 206 1. The Fort Kearny Complex is located less than 1/4 mile to the south of Interstate 80 and is located between
207 2 channels of the Platte River near the town of Kearney, NE and Highway 10.
 - 208
 - 209 2. The Fort Kearny complex is approximately 2,353 acres, contains 7 tracts of land and is 7 miles long
210 (**Figure 6**).
 - 211
 - 212 3. There is a 28 acre of OCSW site located at Tract 2009008.

213

214 Clark Island Complex

215 Contractors should be aware of the following points:

- 216
- 217 1. The Clark Island Complex is located less than 1/4 mile to the south of Interstate 80 and is located near
218 the towns of Gibbon, NE and Shelton, NE.
 - 219
 - 220 2. The Clark Island complex is approximately 771 acres, contains 1 tract of land and is 2 miles long (**Figure**
221 **7**).

222

223 Shoemaker Island Complex

224 Contractors should be aware of the following points:

- 225
- 226 1. Shoemaker Island Complex is located less than 1/2 mile to the south of Interstate 80 between 2 channels
227 of the Platte River near the towns of Wood River and Alda, NE.
 - 228
 - 229 2. Shoemaker Island complex is approximately 1,249 acres, contains 3 tracts of land and is 7 miles long
230 (**Figure 8**).
 - 231
 - 232 3. There is a 16 acre OCSW site located in the middle of East Tract 2011001 and a 6 acre OCSW site
233 located on Tract 2011002.

234

235 Chapman Complex (New for 2020)

236 Contractors should be aware of the following points:

- 237
- 238 1. Chapman Complex is located 3 miles south of Highway 30 within the main channel of the Platte River
239 near the towns of Chapman and Phillips, NE.



240 2. Chapman Complex is approximately 568 acres, contains 2 tracts of land and is 2.7 miles long (**Figure**
241 **9**).

242
243 OCSW Bare Ground West
244 1. OCSW Bare Ground West tracts are located to the south of Interstate 80 between the towns of Lexington
245 and Kearney, NE.

246
247 2. OCSW Bare Ground West contains 3 sites and is approximately 54 acres, approximately 14 acres of
248 overbank spraying along channel, and the remaining areas are buildings and parking areas on various tracts
249 (**Figure 10**).

250
251 OCSW Bare Ground East
252 1. OCSW Bare Ground East tracts are located to the south of Interstate 80 between Highway 10- I-80
253 interchange and the town of Alda, NE.

254
255 2. OCSW Bare Ground East contains 3 tracts of land is approximately 46 acres, 1 inchannel island
256 approximately 9 acres, and the remaining areas are buildings and parking areas on various tracts (**Figure**
257 **11**).

258
259 NOTE: DETAILED MAPS AVAILABLE UPON REQUEST AFTER AWARDING OF CONTRACT.

260
261 **V. BID ITEMS**
262 Contractors will submit annual mobilization and demobilization costs, per-hour rate for labor and
263 equipment, and chemical cost mark up as a percentage. Contractor compensation will be based on the
264 mobilization and demobilization cost, number of hours of labor and equipment use, and the quantity of
265 herbicides used to complete the work.

266
267
268 **VI. FIELD AND OFFICE EQUIPMENT**
269 Potential Contractors will own or acquire all field and office equipment and software required to provide
270 chemical application services.

271
272
273 **VII. CONTRACT TERMS**
274 The selected Contractor (s) will be retained by: Nebraska Community Foundation
275 PO Box 83107
276 Lincoln, NE 68501

277
278 The Contractor will be subject to (but not limited to) the following contract terms:

279
280 Certification/Training Requirements: Meet or exceed Nebraska Department of Agriculture herbicide
281 spraying certification and training requirements.

282
283 Insurance Requirements: If awarded, Contractor shall represent and guarantee that all employees, agents,
284 servants or representatives of Contractor, and all employees, agents, servants, or representatives of sub
285 consultants are covered by workers' compensation insurance as required by Nebraska Statute. Prior to
286 entering into contract with PRRIP, contractor shall furnish PRRIP with certificates of insurance, naming
287 PRRIP as named or additional insured without waiving any defense of sovereign immunity or increasing



288 the limits of PRRIP’s liability in excess of Nebraska State Statute for item (3) below, providing evidence
289 that contractor has in full force and effect the following minimum insurance with insurers authorized to do
290 business in the State of Nebraska. The certificate of insurance shall also provide that PRRIP shall be notified
291 in writing by the carrier at least 30 days prior to any cancellation of said insurance.

- 292
- 293 1. Workers’ compensation insurance as required above;
- 294
- 295 2. Motor vehicular liability insurance with limits of not less than \$1,000,000 combined single limit which
296 insurance shall be applicable to any and all vehicles utilized by contractor to provide the services requested
297 by PRRIP;
- 298
- 299 3. General liability insurance for all services rendered by contractor for the requested services with a
300 minimum of \$1,000,000 personal and advertising injury and \$1,000,000 general aggregate.

301
302 **VIII. SUBMISSION REQUIREMENTS**
303 All interested parties having experience providing the services listed in this RFB are requested to submit a
304 bid.

305
306 Instructions for Submitting Bids

307 One original bid document supporting documentation must be submitted by mail or email to Tim Tunnell
308 *no later than 5:00 PM Central Time **Friday, March 9, 2020***. A bid is late if received after that time and
309 will not be considered. Proposals should be submitted to:

310
311 Tim R. Tunnell, Senior Land Manager
312 Platte River Recovery Implementation Program
313 4111 4th Avenue, Suite 6
314 Kearney, NE 68845

315
316 tunnellt@headwaterscorp.com

317
318 Questions regarding the information contained in this RFB should be submitted by **email only** (no phone
319 calls) to Tim Tunnell at tunnellt@headwaterscorp.com. A list of compiled Contractor questions and
320 responses will be maintained on the Program web site (www.PlatteRiverProgram.org) in the same location
321 as this RFB solicitation.

322
323 RFB Schedule

324 The ED Office expects to complete the selection process and award the work by approximately March 13,
325 2020. The following table represents the RFB schedule:

Description	Date	Time (Central)
Issue RFB	February 17, 2020	NA
Mandatory Pre-proposal meeting	March 2, 2020	1:00 PM
Last day for respondents to submit questions regarding the RFB	March 5, 2020	12:00 PM
Bids due from respondents	March 9, 2020	5:00 PM
Evaluation of bids	March 9, 2020 - March 13, 2020	
Award of Work	On or around March 13, 2020	
Start of Work	Approximately April 1, 2020	
Completion of Work	Approximately November 30, 2020	



326 Pre-Bid Meeting

327 A **mandatory** pre-bid meeting of interested parties will be held on March 2, 2020 from 1:00 to 2:00 p.m.
328 Central Time via conference call or in person at the PRRIP Conference room for the purpose of
329 familiarizing the respondents with the work scope and requirements included herein before submitting a
330 response to this RFB. The PRRIP conference room is located in the Eagle Nest Plaza at 4111 4th Avenue,
331 Suite 6 in Kearney, NE 68845. Please email Tim Tunnell (tunnelt@headwaterscorp.com) for the
332 conference call dial-in information and provide a list of people from your party expected to join in the pre-
333 proposal meeting by 12:00 p.m. central time on February 28, 2020.
334

335 It is the Contractor's responsibility, while at the pre-proposal meeting/conference call, to ask questions
336 necessary to understand the RFB so the respondent can submit a proposal that is complete and in accordance
337 with RFB requirements. There shall be no minutes distributed by the ED Office regarding the meeting.
338

339 Bid Content

340 Bids must include the following contents and documentation:
341

342 **1) General Information**

343 **2) Completed Bid Form** charge for annual mobilization, rate per hour of chemical application (rate
344 includes equipment charge & labor), and percentage of mark up for herbicide used.

345 **3) Equipment list** that includes all equipment that would be mobilized for this project.

346 **4) References Names/address/telephone** of three clients who can attest to your experience as it relates to
347 the services you are proposing.

348 **5) Description of insurance** shall be provided with the proposal. Proof of insurance will be required
349 before a contract is issued. Minimum insurance requirements are described in Section VII.

350 **6) Affirmative statement** that neither the firm nor the principals of the firm are on the federal suspended
351 and disbarred list. If the firm has a DUNS number, please provide to assist in verification.
352

353 Criteria for Evaluating Bids

354 Bids will be evaluated and a Contractor selected based on the following principal considerations:

355 1. Price proposal.

356 2. Equipment availability.

357 3. References.

358 4. Insurance and affirmative statement.
359

360 The winning bid will be selected to best meet overall project objectives. Should the successful Contractor(s)
361 be unable at any time to accomplish the work they have been contracted for or meet any of the requirements
362 or standards listed in this Bid, the next ranked Contractor may be contacted to provide the required work.
363

364 Award Notice

365 After completing the evaluation of all bids, the Program will select a Contractor. If the Program is unable
366 to negotiate a mutually satisfactory contract with a Contractor, it may, at its sole discretion, cancel and
367 reissue a new RFB.
368

369 Program Perspective

370 The Program GC has the sole discretion and reserves the right to reject any and all bids received in response
371 to this RFB and to cancel this solicitation if it is deemed in the best interest of the Program to do so. Issuance
372 of this RFB in no way constitutes a commitment by the Program to award a contract, or to pay Contractor's
373 costs incurred either in the preparation of a response to his RFB or during negotiations, if any, of a contract



374 for services. The Program also reserves the right to make amendments to this RFB by giving written notice
375 to Contractors, and to request clarification, supplements, and additions to the information provided by a
376 Contractor.

377
378 By submitting a bid in response to this solicitation, Contractors understand and agree that any selection of
379 a Contractor or any decision to reject any or all responses or to establish no contracts shall be at the sole
380 discretion of the Program. To the extent authorized by law, the Contractor shall indemnify, save, and hold
381 harmless the Nebraska Community Foundation, the states of Colorado, Wyoming, and Nebraska, the
382 Department of the Interior, members of the GC, and the ED Office, their employees, employers, and agents,
383 against any and all claims, damages, liability, and court awards including costs, expenses, and attorney fees
384 incurred as a result of any act or omission by the Contractor or its employees, agents, sub-Contractors, or
385 assignees pursuant to the terms of this project. Additionally, by submitting a proposal, Contractor agrees
386 that they waive any claim for the recovery of any costs or expenses incurred in preparing and submitting a
387 proposal.

388
389 **IX. BID RESPONSE FORMS**

390 The following forms are to be submitted as part of Contractor proposals.



391 **PART I: GENERAL INFORMATION**

Company Name:	Telephone Number:	Fax Number:
Mailing Address:	City, State, Zip Code:	
Physical Address:	City, State, Zip Code:	
Name of Contact:	Telephone Number:	E-mail Address & Company web address
Business Type: <input type="checkbox"/> Corporation <input type="checkbox"/> Partnership <input type="checkbox"/> Individual <input type="checkbox"/> Consolidated Company		
Status: <input type="checkbox"/> Prime Contractor <input type="checkbox"/> Subcontractor	Federal Tax ID:	
Number of Employees (at peak):	Age of Firm:	Insurance Limit:

392



393 **PART II: PLATTE RIVER RECOVERY IMPLEMENTATION PROGRAM**

394

395 **2020-2022 CHEMICAL APPLICATION SERVICES**
396 **LABOR & EQUIPMENT COST RATE:**
397

398

399

400

The Contractor is required to submit unit prices for all work items below that apply to the proposal:

401

Item No.	Description	Unit	Unit Price
001	Mobilization and Demobilization ¹	LS	\$ _____
002	Chemical Application-Equipment & Labor ²		
	Chemical Application-Spray Truck	HR	\$ _____
	Chemical Application-ATV	HR	\$ _____
	Chemical Application-UTV	HR	\$ _____
	Chemical Application-Argo	HR	\$ _____
	Chemical Application-Airboat	HR	\$ _____
	Chemical Application-Other	HR	\$ _____
	Chemical Application-Other	HR	\$ _____
003	Chemical Cost Markup ³	YES/ NO	% _____

402

¹ Lump sum rate for mobilization and demobilization per year of service.

² Per-hour rates for equipment required to complete the work.

³ Chemical will be reimbursed based on use and mark-up.



403 PART III: List equipment that is available to complete work.

404

Quantity	Item* (Description, Size, Capacity. Etc.)	Present Location

405

406

407

GPS Capability? Yes/No Brand of Unit _____

408

409

410 **Preferred Chemical for Bare Ground:**

411

413

414

415

416

417

418

419

Preferred Chemical for Noxious Weeds:

420

421

422

423

424

425

426

427

428

429



430 **PART IV: PLATTE RIVER RECOVERY IMPLEMENTATION PROGRAM**

431

432

REFERENCES:

433

434

(Names/address/telephone of three clients who can attest to your experience
as it relates to the services you are proposing.)

435

436

437

438

FIRM NAME: _____

439

CONTACT PERSON: _____

440

ADDRESS: _____

441

TELEPHONE: _____

442

EMAIL: _____

443

444

445

FIRM NAME: _____

446

CONTACT PERSON: _____

447

ADDRESS: _____

448

TELEPHONE: _____

449

EMAIL: _____

450

451

452

FIRM NAME: _____

453

CONTACT PERSON: _____

454

ADDRESS: _____

455

TELEPHONE: _____

456

EMAIL: _____

457

458



Appendix A

NEBRASKA NOXIOUS WEEDS

459
460
461

- 462 • Saltcedar (*Tamirix* spp.)
- 463 • Purple Loosetrife (*Lythrum salicaria* L.)
- 464 • Phragmites (*Phragmites australis*)
- 465 • Leafy Spurge (*Euphorbia esula* L.)
- 466 • Canada Thistle (*Cirsium arvense* L.)
- 467 • Musk Thistle (*Carduus nutans* L.)
- 468 • Plumless Thistle (*Carduus acanthoides*)
- 469 • Spotted (*Centaurea stoebe*) and Diffuse (*Centaurea diffusa*) Knapweed
- 470 • Japanese (*Fallopia japonica*), Giant (*Fallopia sachalinensis*) and Bohemian (*Fallopia*
- 471 *bohemica*) Knotweed
- 472 • *Sericea Lespedeza* (*Lespedeza cuneata*)

**Appendix B****NEBRASKA INVASIVE WEED WATCH LIST**

473
474
475
476
477
478 Invasive Plants Watch List: Mixedgrass Prairie Ecoregion (Adams, Boyd, Buffalo, Custer,
479 Dawson, Franklin, Frontier, Furnas, Gosper, Greeley, Hall, Harlan, Hayes, Hitchcock, Howard,
480 Kearney, Keya Paha, Nuckolls, Phelps, Red Willow, Sherman, Valley, Webster)

481
482 Future Invasive Species:

483 Giant reed Arundo donax L.
484 Oriental bittersweet Celastrus orbiculatus
485 Water hyacinth Eichhornia crassipes
486 Hydrilla Hydrilla verticillata
487 Brittle naiad Najas minor
488 Giant salvinia Salvinia molesta

489
490 Priority Species:

491 Amur maple Acer ginnala
492 Russian knapweed Acroptilon repens
493 Garlic mustard Allaria petiolata
494 Australian beardgrass
495 (Caucasian bluestem) Bothriochloa bladhii (Andropogon bladhii)
496 Cutleaf teasel Dipsacus laciniatus
497 European alder-
498 buckthorn Frangula alnus
499 Japanese honeysuckle Lonicera japonica, morrowii, morrowii x tatarica (also Morrow, Showy
500 Fly) Myriophyllum spicatum Eurasian water-milfoil
501 Sulphur cinquefoil Potentilla recta L.
502 Yellow-flag Iris Iris pseudacorus



Appendix C

**PRRIP Chemical Management Form
(Must Accompany Invoice for Payment)**

Date _____

Complex _____ Tract _____ Start Time _____ End Time _____

Contract Company Name _____ Licensed Supervisor Name _____

Weather Conditions:

Wind Speed: _____ mph Wind Direction: _____ Temperature: _____ °F

(Circle)

Sunny Partly Cloudy Cloudy Rain Cloud Cover: _____ %

(Circle)

Bare Ground Thistle Leafy Spurge Phragmites Purple Loosetrife Tree/Brush _____

Other _____ Other _____ Other _____ Other _____ Other _____

App Date	App Hrs	Equip Used	Target Spp.	Herbicide	Rate	Adjuvant/Oil	Mix	Gallons Herbicide	Adj	

Comments: _____

Follow-up

Comments _____

Identify Coverage Area on Map/ Provide GPS data



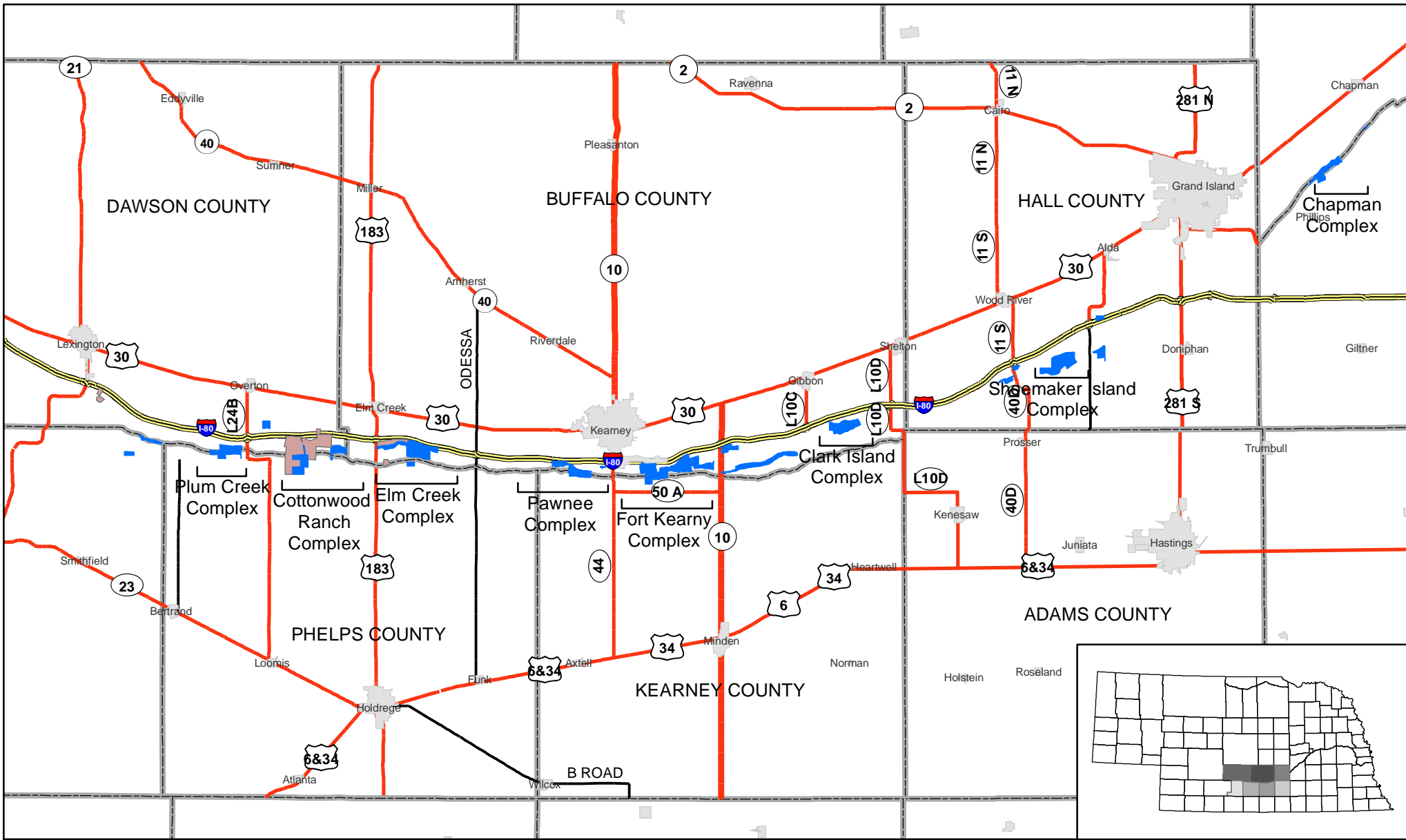
539

540

541

542

Appendix D
Figures 1- 11



- Legend**
- County
 - Property Boundary**
 - PRRIP
 - NPPD

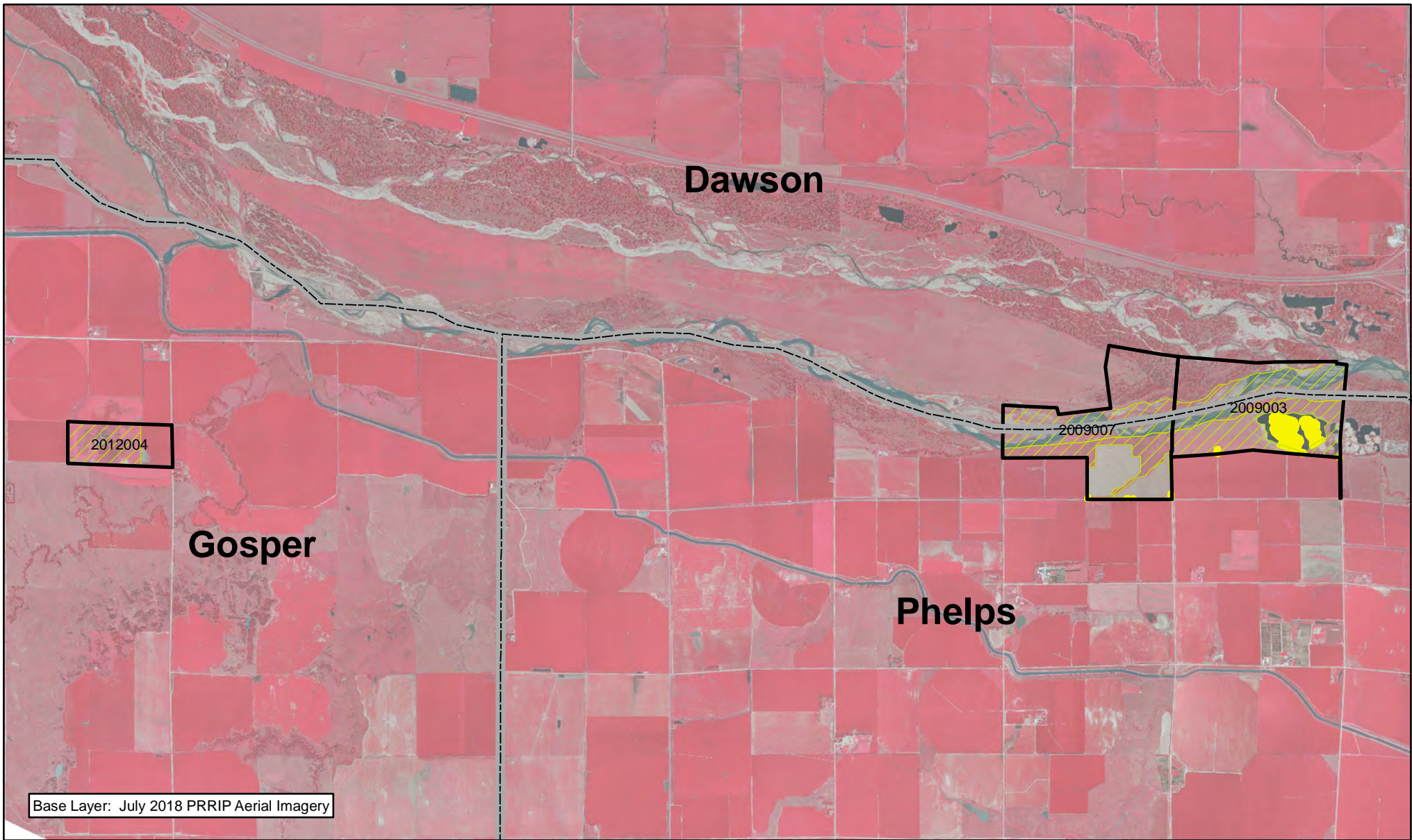


10 Miles

**PRRIP
HABITAT COMPLEXES**

Date: 11/15/2019
By: TRT




Figure 1



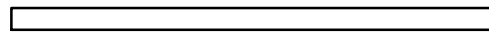
Base Layer: July 2018 PRRIP Aerial Imagery



Legend

-  County
-  Noxious_Weed_Units
-  Preemergent_application



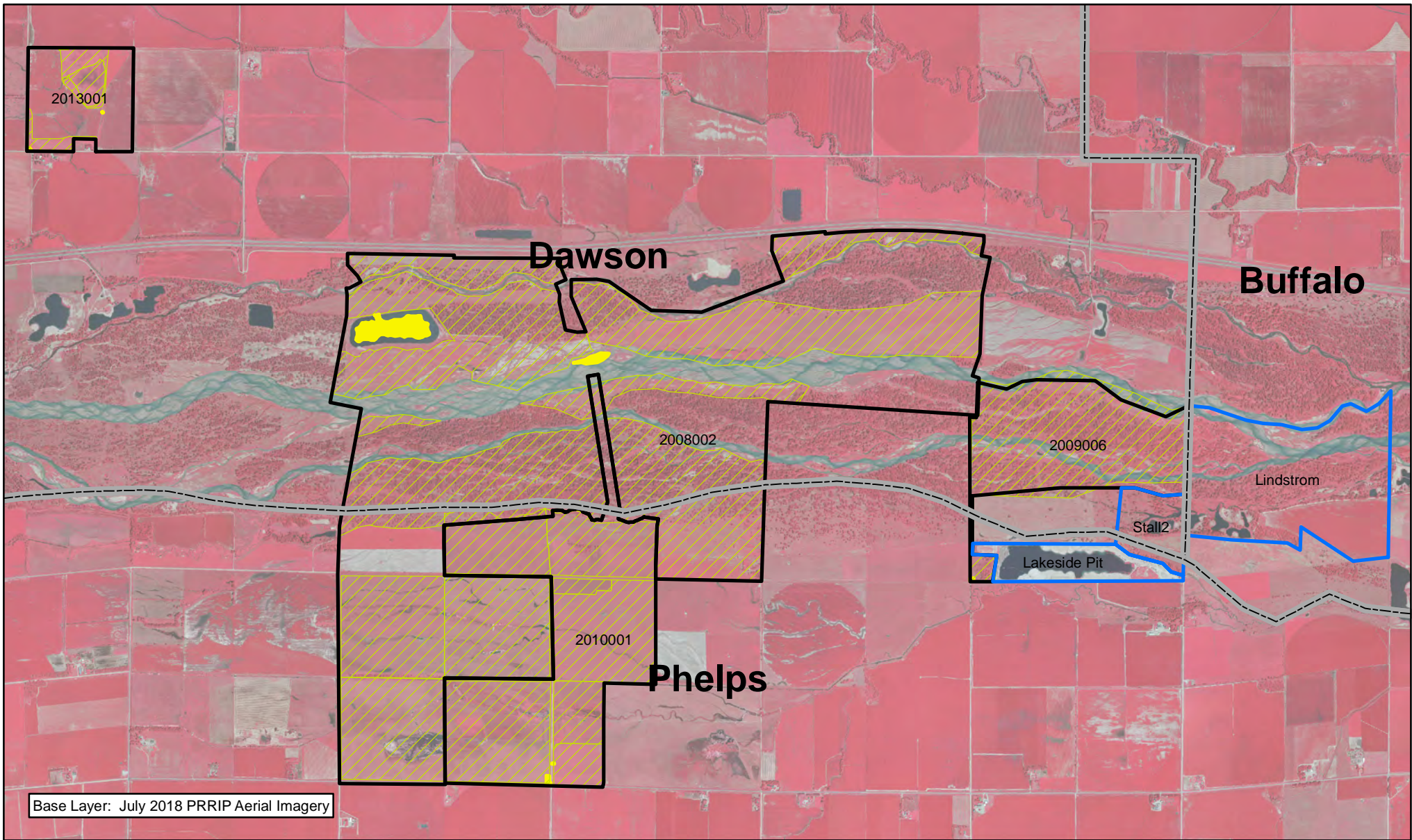
 Miles

2

**PLUM CREEK COMPLEX
FY 2020-2022**

Date: 11/19/19
By: TRT




Figure 2

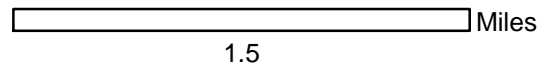


Base Layer: July 2018 PRRIP Aerial Imagery



Legend

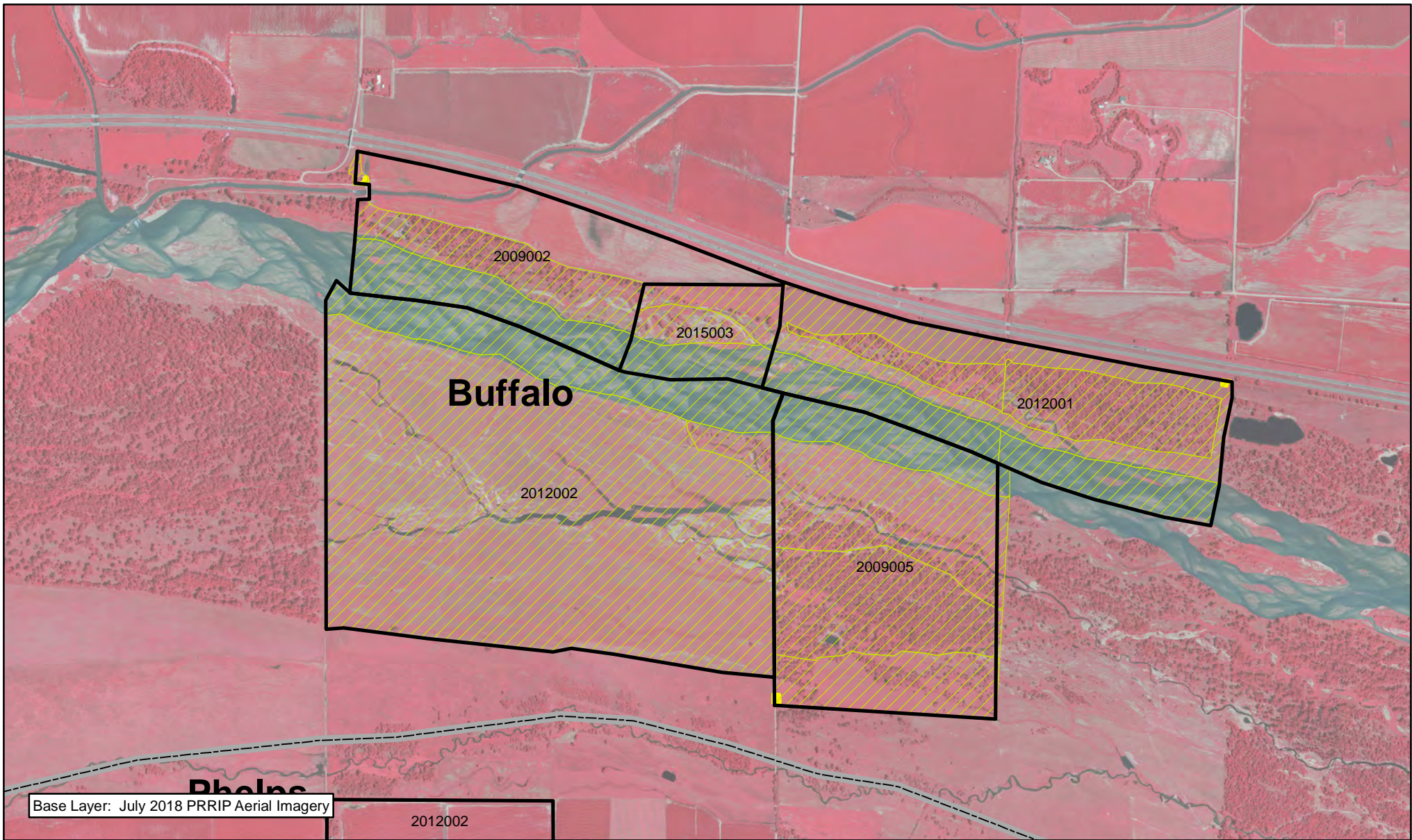
-  County
-  Noxious_Weed_Units
-  Premergent_application



COTTONWOOD RANCH
COMPLEX
FY 2020-2022

Date: 11/19/19
By: TRT

Figure 3






Base Layer: July 2018 PRRIP Aerial Imagery

2012002

Buffalo

Legend

-  County
-  Noxious_Weed_Units
-  Preemergent_application



1 Miles

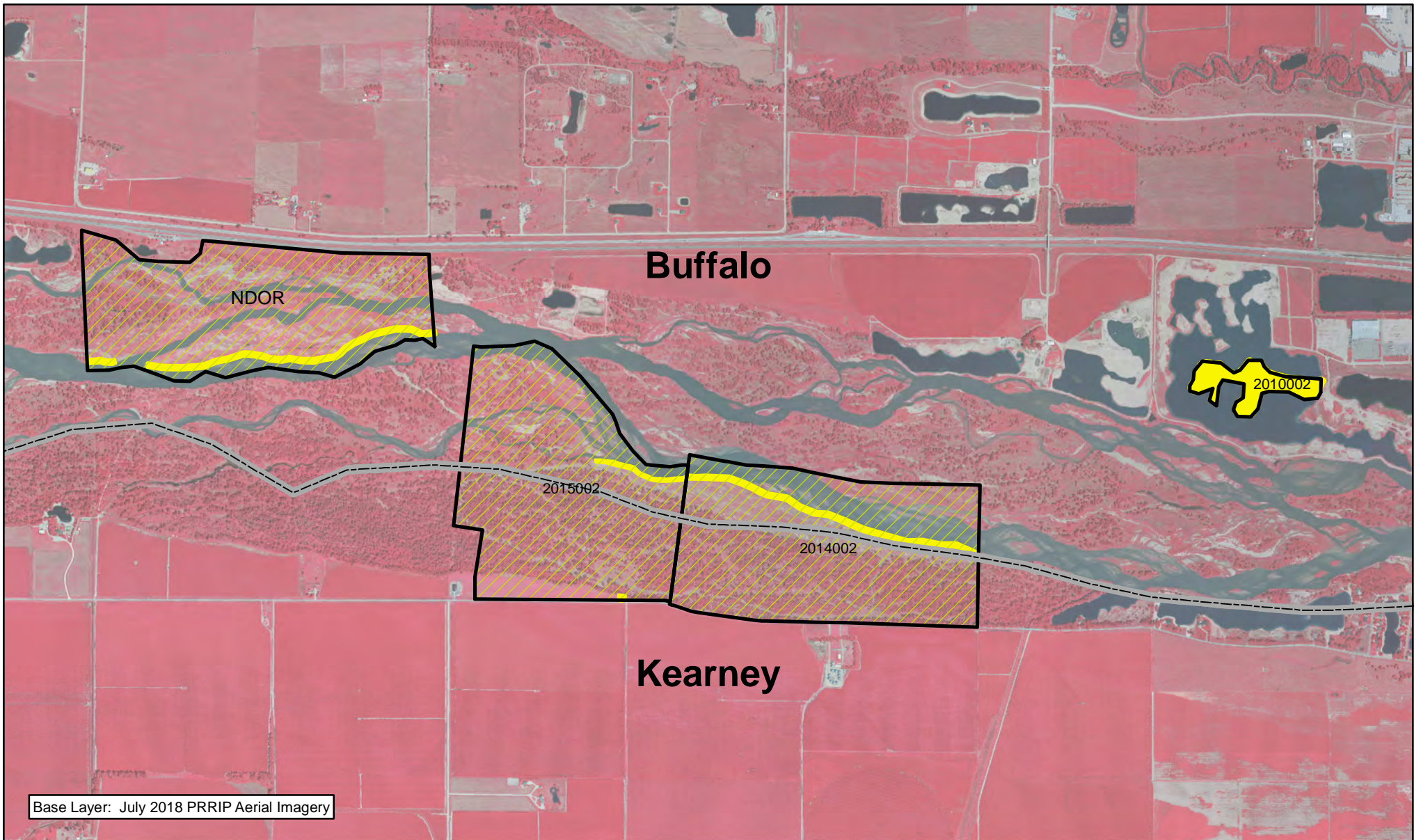
1

ELM CREEK
COMPLEX
FY 2020-2022

Date: 11/19/19
By: TRT

Figure 4








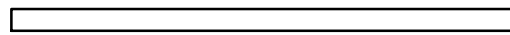
Base Layer: July 2018 PRRIP Aerial Imagery



Legend

-  County
-  Noxious_Weed_Units
-  Preemergent_application



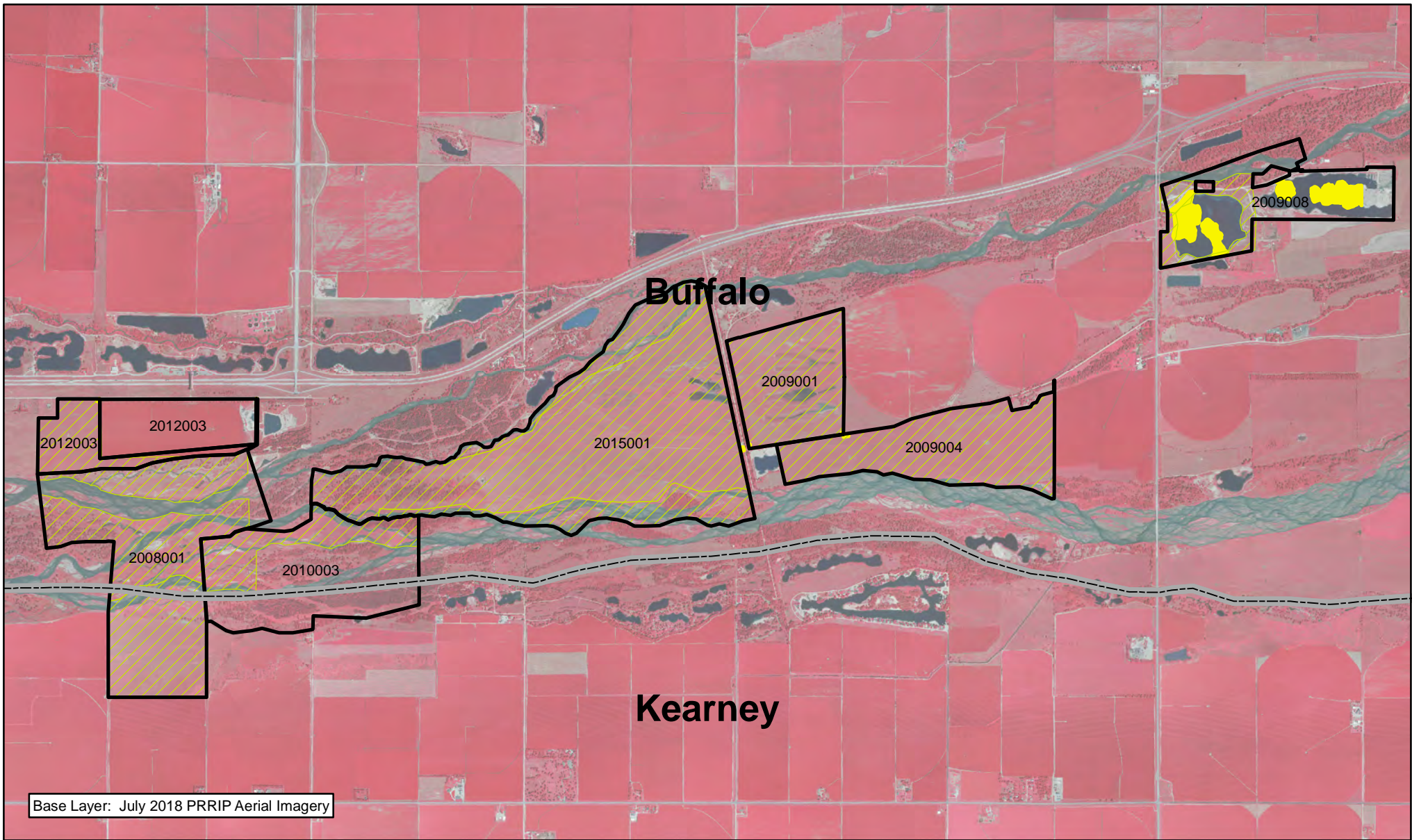
 Miles

1

PAWNEE
COMPLEX
FY 2020-2022

Date: 11/19/19
By: TRT




Figure 5

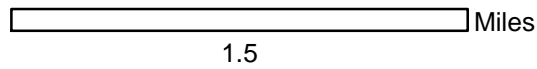


Base Layer: July 2018 PRRIP Aerial Imagery



Legend

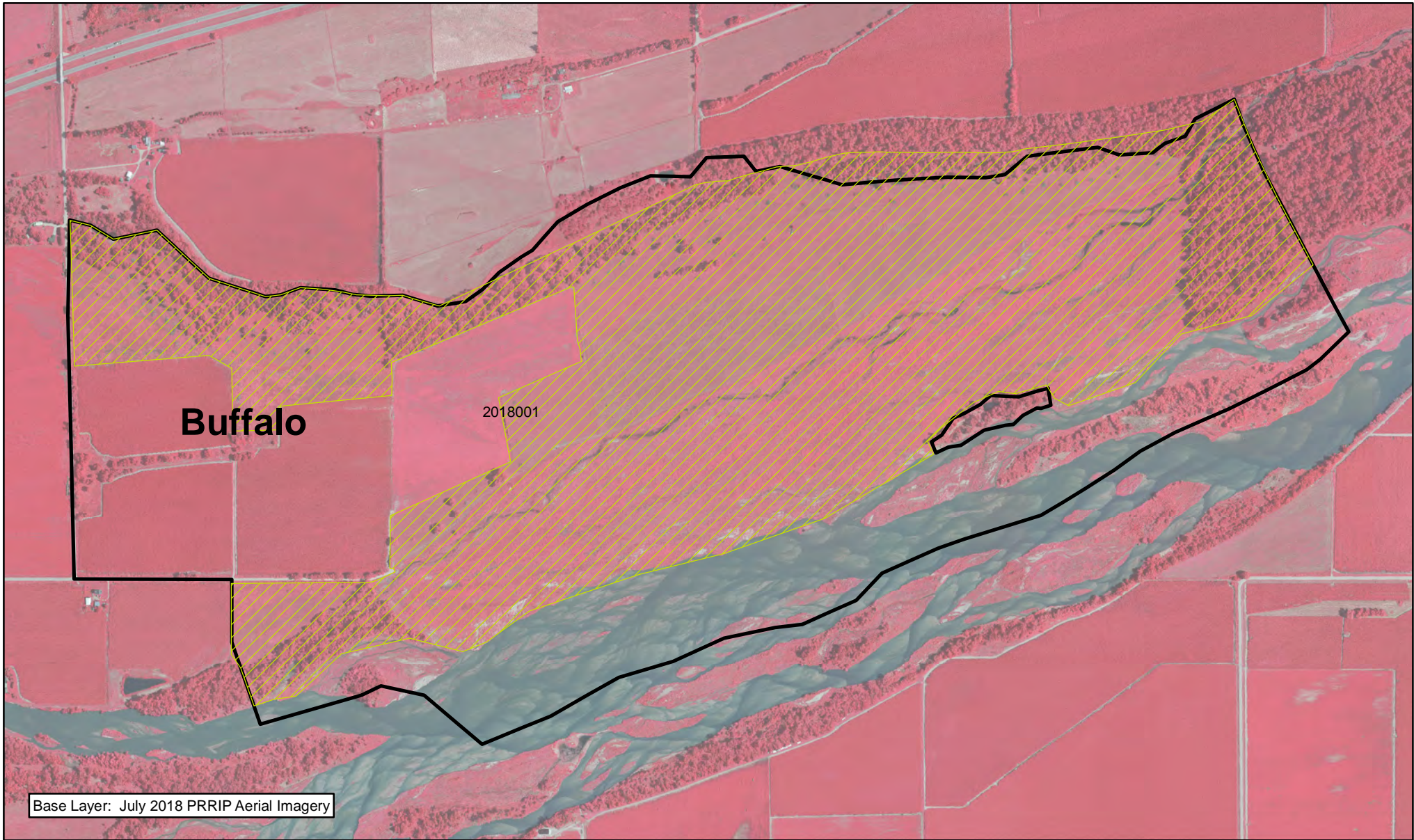
-  County
-  Noxious_Weed_Units
-  Preemergent_application



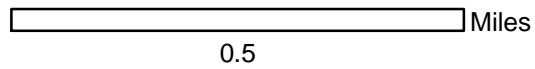
**FORT KEARNY
COMPLEX
FY 2020-2022**

Date: 11/19/19
By: TRT

Figure 6



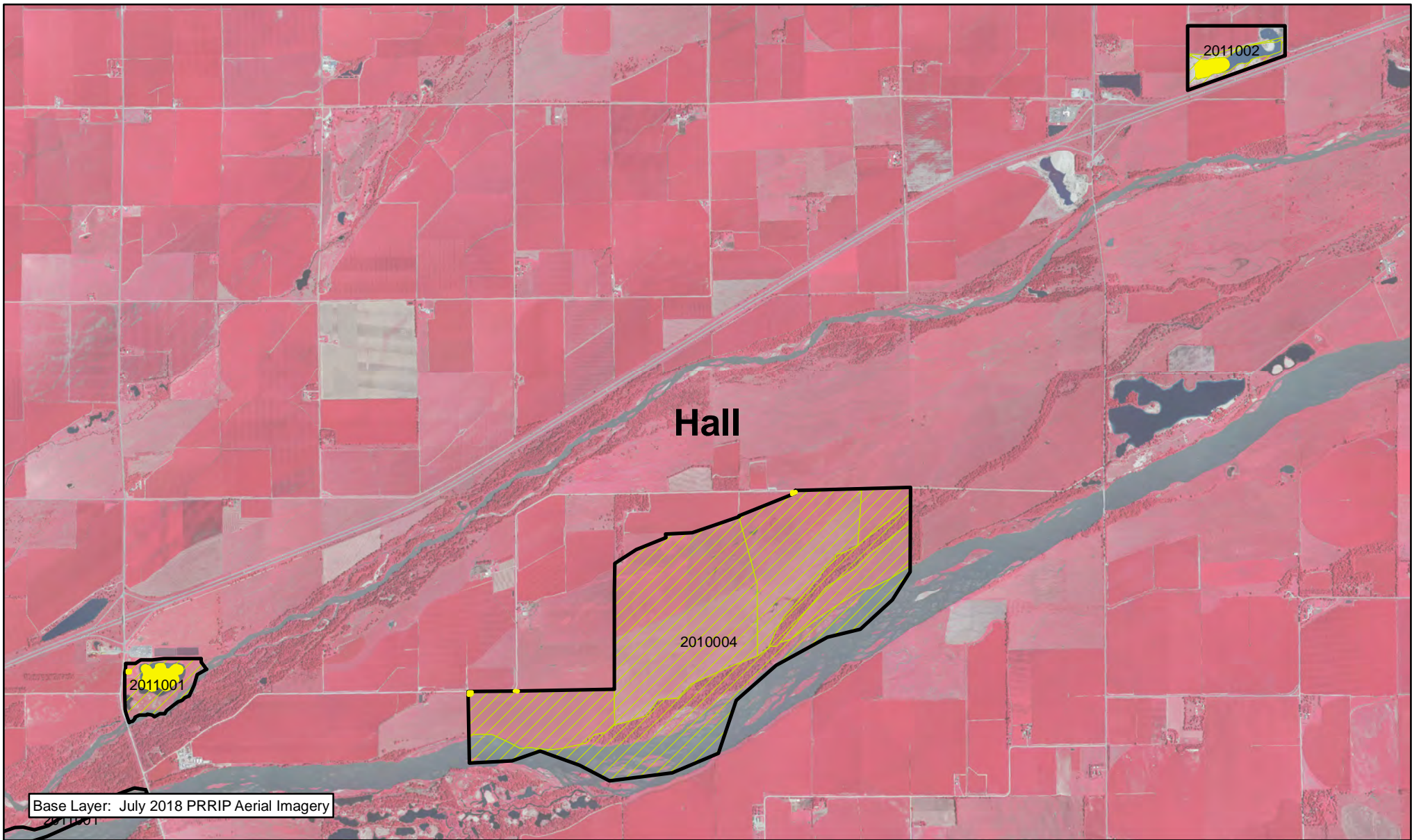
- Legend**
- County
 - Preemergent_application
 - Noxious_Weed_Units



CLARK ISLAND
COMPLEX
FY 2020-2022

Date: 11/19/19
By: TRT




Figure 7




Base Layer: July 2018 PRRIP Aerial Imagery



Legend

-  County
-  Noxious_Weed_Units
-  Preemergent_application



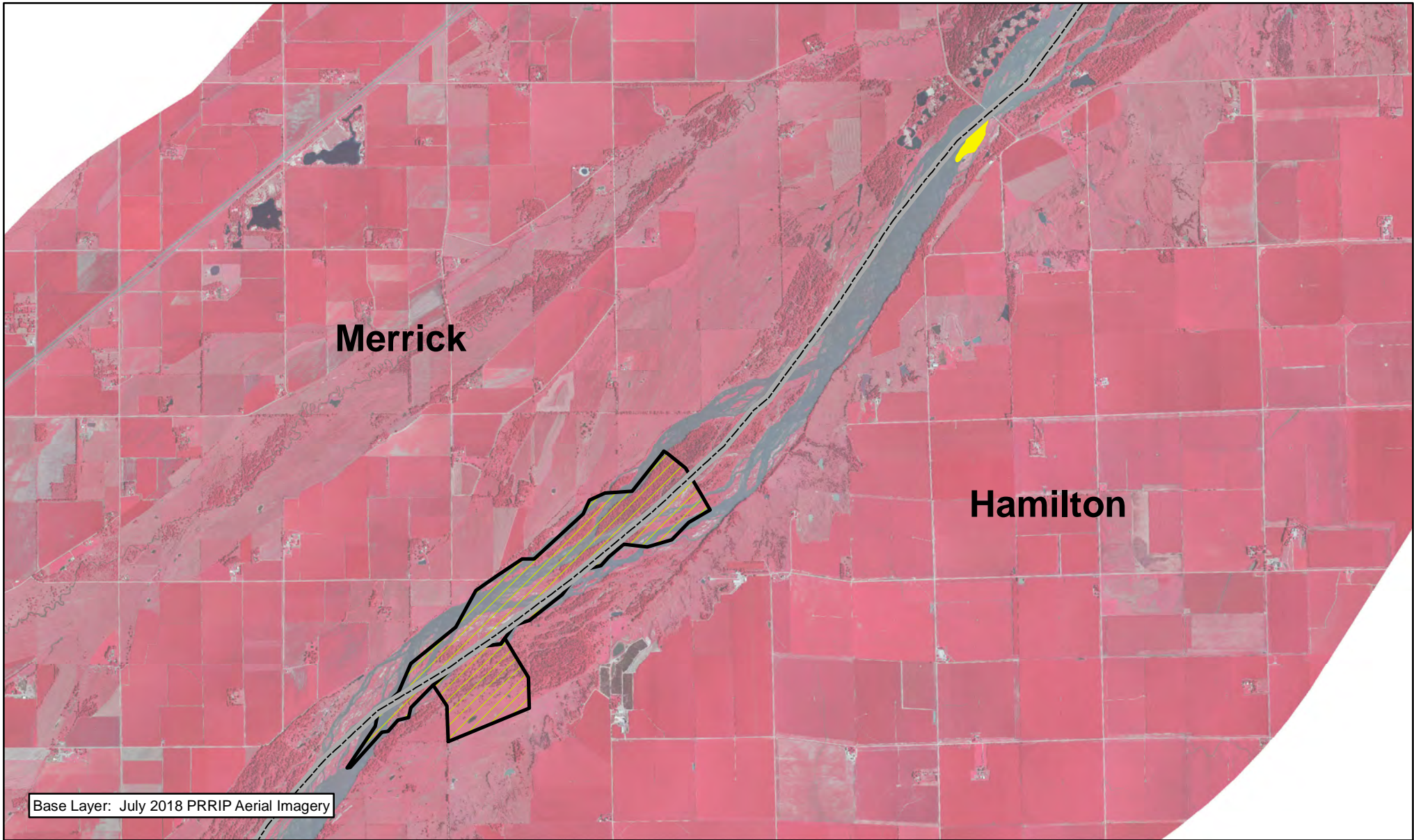
 Miles

1

**SHOEMAKER ISLAND
COMPLEX
FY 2020-2022**

Date: 11/19/19
By: TRT




Figure 8




Base Layer: July 2018 PRRIP Aerial Imagery



Legend

-  County
-  Noxious_Weed_Units
-  Preemergent_application



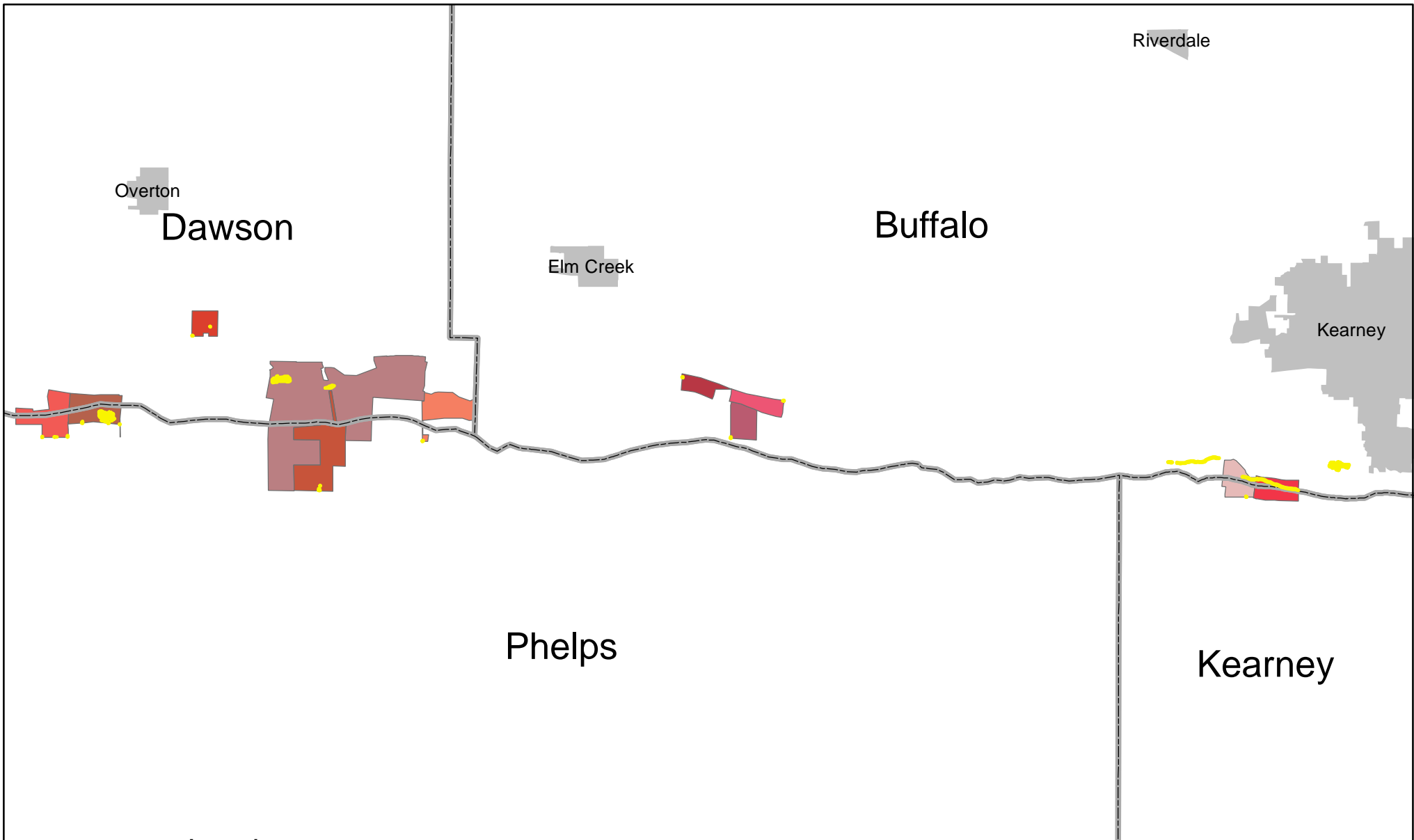
 Miles

2













CHAPMAN
COMPLEX
FY 2020-2022

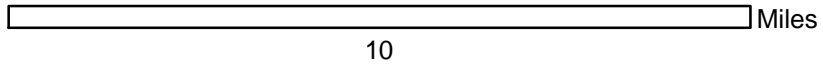
Date: 11/19/19
By: TRT

Figure 9



Legend

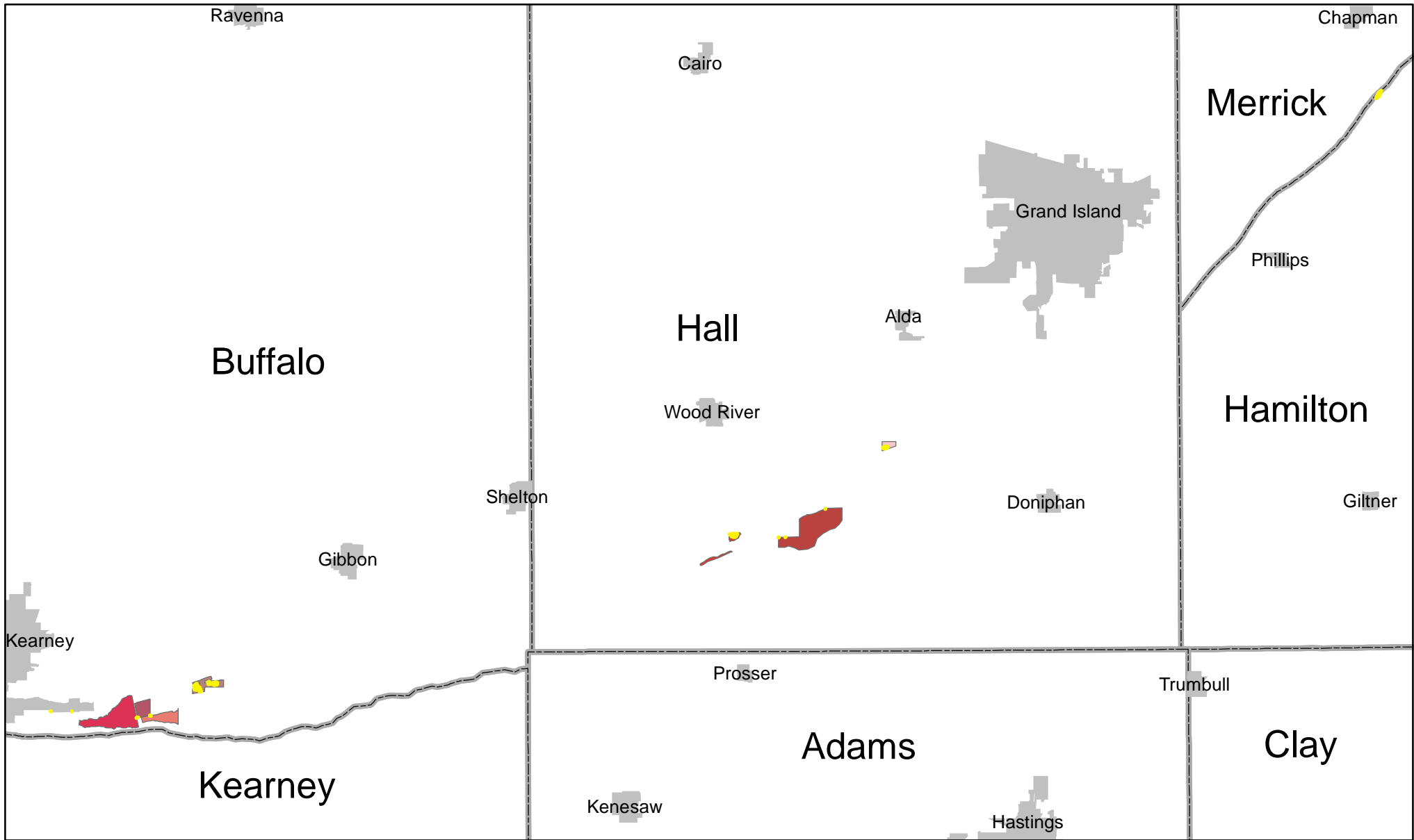
PRRIPTractNum	
	2008002
	2009002
	2009003
	2009005
	2009006
	2009007
	2010001
	2010002
	2012001
	2013001
	2014002
	2015002



OCSW BARE GROUND
WEST

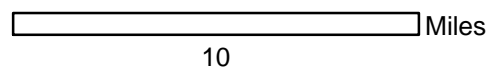
Date: 11/19/2019
By: TRT

Figure 10



Legend

PRRIPTractNum	
	2010004
	2011001
	2011002
	2015001
	2009001
	2009004
	2009008



OCSW BARE GROUND EAST
 Date: 11/19/2019
 By: TRT

Figure 11

