



REQUEST FOR PROPOSALS (RFP)

**Prescribed Fire Management Services
2020-2022**

PLATTE RIVER RECOVERY IMPLEMENTATION PROGRAM

Office of the Executive Director
4111 4th Avenue, Suite 6
Kearney, Nebraska 68845

January 7, 2020



Contents

I. OVERVIEW 3

II. PROJECT DESCRIPTION & SCOPE OF WORK..... 3

III. PROJECT BUDGET 9

IV. FIELD AND OFFICE EQUIPMENT 10

V. CONTRACT TERMS..... 9

VI. SUBMISSION REQUIREMENTS 11

VII. PROPOSAL RESPONSE FORMS..... 13

Appendix A – PRRIP Prescribed Fire Standards

Appendix B – PRRIP Fireline Standards

Appendix C – Figures 1-11



1 **PLATTE RIVER RECOVERY IMPLEMENTATION PROGRAM**
2 **REQUEST FOR PROPOSALS (RFP)**

3
4 **SUBJECT:** Spring 2020-2022 Prescribed Fire Management Services
5 **REQUEST DATE:** January 10, 2020
6 **PRE-PROPOSAL MEETING:** January 24, 2020
7 **CLOSING DATE:** January 31, 2020
8 **POINT OF CONTACT:** Tim R. Tunnell, Senior Land Manager
9 Headwaters Corporation
10 tunnellt@headwaterscorp.com
11

12 **I. OVERVIEW**

13 The Platte River Recovery Implementation Program (“Program” or “PRRIP”) was initiated on January 1,
14 2007 between Nebraska, Wyoming, Colorado, and the Department of the Interior to address threatened and
15 endangered species issues in the central and lower Platte River basin. The species considered in the
16 Program, referred to as “target species”, are the whooping crane, piping plover, interior least tern, and pallid
17 sturgeon.

18
19 A Governance Committee (GC) reviews, directs, and provides oversight for Program activities. The GC is
20 comprised of one representative from each of the three states, three water user representatives, two
21 representatives from environmental groups, and two members representing federal agencies. The GC has
22 named Jason Farnsworth to serve as the Program Executive Director (ED). Headwaters Corporation serves
23 as the staffing mechanism for the Program. Program staff are located in Nebraska and Colorado and are
24 responsible for assisting in carrying out Program-related activities.
25

26 One of the major components of Program implementation is acquisition and management of 10,000 acres of
27 habitat for the benefit of the target species. To date, approximately 13,225 acres have been acquired and
28 are being managed by the Executive Director’s Office (EDO). Prescribed fire is an important tool used by
29 the Program to manage grassland composition and structure. During the first several years of
30 implementation, the Program relied on strategic partnerships with local agencies and conservation
31 organizations to implement prescribed fire. However, as Program land ownership has increased, prescribed
32 fire needs have surpassed local capacity. **As such, the GC is requesting proposals from National Wildfire**
33 **Coordinating Group (NWCG) qualified contractors for spring 2020-2022 prescribed fire**
34 **management services to be performed starting April 1 of each year.**
35

36 **II. PROJECT DESCRIPTION & SCOPE OF WORK**

37
38 **Project Description**

39 The Program is requesting a multi-year proposal for prescribed fire management services during the
40 spring of 2020, 2021 and 2022. The performance period will begin on April 1 and will end on or around
41 May 15 of each year. The contractor must have sufficient availability during the six (6) week period to
42 fully utilize weather windows that meet prescriptions for burns at Program habitat complexes which are
43 distributed along a ninety mile reach of the Platte River in central Nebraska.



44 The Contractor will be responsible for lodging and all labor, materials, equipment, tools, transportation and
45 supplies required to complete the work. Fire management services will include, but are not limited to,
46 prescribed fire planning and implementation, fire-line preparation, post burn mop-up and monitoring, and
47 if needed, wildfire suppression. Contractors must be able to provide their own equipment. Contractors must
48 also be available respond to any issues that may arise after each prescribed burn is complete. These issues
49 could include: smoke management problems, mop-up concerns, post-burn monitoring needs or escapes.
50 This response must occur during the same day of contact by the Rural Fire Protection Districts local fire
51 chief with jurisdiction over the burn unit or EDO staff and must include the appropriate personnel,
52 equipment or contingency measures.

53

54

55 **Scope of Work**

56 Habitat Complexes

57 Program lands are generally organized into approximately 1,000 to 3,000 acre blocks referred to as habitat
58 complexes. There are six habitat complexes distributed across the project area, containing the majority of
59 land to be burned on an annual basis (**Figure-1**). We anticipate burning approximately 1,000 -2,000 acres
60 annually across all habitat complexes. Burn unit boundaries will be identified and provided to contractor
61 during February of each year for planning purposes. The following description generally apply to areas that
62 will be burned:

- 63 • Most burn blocks on these tracts have been burned once over the last five to ten years; stand types
64 are primarily lowland, tall grass prairie that have been heavily invaded with introduced cool-season
65 grasses and often include natural riparian forest;
- 66 • Most burn units have a history of grazing and/or haying;
- 67 • Fire-lines are often limited to roads, ditches, mowed/hayed lines and river/ slough edges;
68 contractors should be comfortable burning from these features; additional fire-line establishment
69 can be conducted but must be authorized by the PRRIP Land Manager.
- 70 • Smoke Mangement will be a priority concern for contractor. All units are located within close
71 proximity to Interstate 80, communities and farmsteads. Contractors will be cautious in utilizing
72 appropriate wind speed and directions to prevent conflicts/ accidents due to prescribed fire
73 operations and smoke.

74

75 The following sections of the scope of work provide specific information about each habitat complex.
76 ***Specific burn units are NOT identified on these maps and will be provided to contractor in February of***
77 ***each year.***

78

79 Plum Creek Complex

80 Contractors should be aware of the following points:

81

82 1. Plum Creek Complex is located less than 1 mile to the south of Interstate 80 between the towns of
83 Lexington and Overton, NE.

84

85 2. Plum Creek complex is approximately 722 acres, contains 2 tracts of land and is 2 miles long with the
86 majority of the land located on the south side of the Platte river; mostly grassland fuels; There is 1 additional
87 wetland tract, approximately 100 acres, located in close proximity to the southwest of the complex(**Figure-**
88 **2**).

89

90 3. Tract 2012004 is located in the Lexington Volunteer Fire Department Jurisdiction and Tracts 2009003
91 and 2009007 are located in the Overton Volunteer Fire Department Jurisdiction. (**Figure-11**).



92 Cottonwood Ranch Complex

93 Contractors should be aware of the following points:

94
95 1. Cottonwood Ranch Complex is located less than 1 mile to the south of Interstate 80 between the towns
96 of Overton and Elm Creek, NE.

97
98 2. Cottonwood Ranch complex is approximately 3,528 acres, contains 3 tracts of land and is 4 miles long
99 with the majority of the land located on the south side of the main channel of the Platte river; mostly
100 grassland fuels; There is 1 additional wetland tract, approximately 153 acres, located in close proximity to
101 the northwest of the complex (**Figure-3**).

102
103 3. Tracts 2008002, 2010001, 2009006 and 2013001 are located in the Overton Volunteer Fire Department.
104 (**Figure-11**).

105
106

107 Elm Creek Complex

108 Contractors should be aware of the following points:

109
110 1. Elm Creek Complex is located less than 1/4 mile to the south of Interstate 80 between the towns of Elm
111 Creek and Odessa, NE.

112
113 2. Elm Creek complex is approximately 1,555 acres, contains 9 tracts of land and is 2 miles long with 4
114 tracts being located on the north side of the Platte river and the others are located on the south side of the
115 Platte river. (**Figure-4**).

116
117 3. Tract 2009002, 2009005, 2012001 and 2012002 are located in the Elm Creek Volunteer Fire Department
118 Jurisdiction (**Figure-11**).

119
120

121 Pawnee Complex

122 Contractors should be aware of the following points:

123
124 1. The Pawnee Complex is located less than 1/4 mile to the south of Interstate 80 between the town of
125 Odessa, NE and Kearney, NE.

126
127 2. The Pawnee complex is approximately 467 acres, contains 2 tracts of land and is 2 miles long. Both tracts
128 are located on the south side of the Platte river (**Figure-5**).

129
130 3. Tracts 2014002 and 2015002 are located in the Kearney Volunteer Fire Department Jurisdiction (**Figure-**
131 **11**).

132
133

134 Fort Kearny Complex

135 Contractors should be aware of the following points:

136
137 1. The Fort Kearny Complex is located less than 1/4 mile to the south of Interstate 80 and is located between
138 2 channels of the Platte River near the town of Kearney, NE and Highway 10.

139



140 2. The Fort Kearny complex is approximately 2,130 acres, contains 7 tracts of land and is 5 miles long.
141 **(Figure-6)**.

142
143 3. Tracts 2008001, 2009001, 2009004, 2010003, 2012003, and 2015001 are located in the Kearney
144 Volunteer Fire Department Jurisdiction **(Figure-11)**.

145
146 Clark Island Complex

147 Contractors should be aware of the following points:

148
149 1. The Clark Island Complex is located less than 1/4 mile to the south of Interstate 80 and is located between
150 2 channels of the Platte River near the town of Gibbon, NE and Shelton, NE.

151
152 2. The Clark Island complex is approximately 771 acres, contains 1 tract of land and is 2 miles long.
153 **(Figure-7)**.

154
155 3. Tract 2018001 is located in the Gibbon Volunteer Fire Department Jurisdiction **(Figure-11)**.

156
157 Shoemaker Island Complex

158 Contractors should be aware of the following points:

159
160 1. Shoemaker Island Complex is located less than 1/2 mile to the south of Interstate 80 between 2 channels
161 of the Platte River near the towns of Wood River and Alda, NE.

162
163 2. Shoemaker Island complex is approximately 1,063 acres, contains 1 tract of land and is 3 miles long
164 **(Figure-8)**.

165
166 3. Tract 2010004 is located in the Wood River Volunteer Fire Department Jurisdiction **(Figure-11)**.

167
168 Chapman Complex

169 Contractors should be aware of the following points:

170
171 1. Chapman Complex is located 3 miles to the south of Highway 30 within the main channel of the Platte
172 River near the towns of Chapman and Phillips, NE.

173
174 2. Chapman Island complex is approximately 568 acres, contains 2 tracts of land and is 2.7 miles long
175 **(Figure-9)**.

176
177 3. These tracts are located in the Chapman, Marquette, and Phillips Volunteer Fire Department
178 Jurisdictions **(Figure-11)**.

179
180 Smoke Sensitive Areas:

181 The tracts are primarily located in rural landscape with scattered farmsteads however they are near
182 interstates, major highway(s) and/or populated areas.

183
184 Communities at Risk:

185 Nine communities exist within the PRRIP project area which extends east from Lexington to Grand Island
186 **(Figure-10)**. Their proximity to PRRIP properties makes them vulnerable to smoke and other hazards
187 related to wildfire and prescribed burning. Additional outlying communities that may also be affected by



188 smoke include Bertrand, Loomis, Holdrege, Funk, Axtell, Minden, Heartwell, Kenesaw, Juniata, Hastings,
189 Doniphan, Cairo, Riverdale, Amherst, and Miller (**Figure-8**).

190

191 Wildfire Suppression and Escaped Prescribed Fires:

192 In the event of an escaped prescribed fire originally ignited by the contractor, contractors may be
193 responsible for coordinating with and working under the direction of the Rural Fire Protection Districts
194 local fire chief with jurisdiction over the area on containment, mop-up and monitoring issues until fire is
195 called out by the appropriate agency (**Figure-11**). During this process contractors may be responsible for
196 paying suppression costs charged for fire suppression and may be required to conduct work or provide
197 assistance without compensation by the PRRIP.

198

199

200 Long-Term Mop-Up, Smoke Mangement, and Re-Burn Situations:

201 Compliance with smoke management guidelines are voluntary in Nebraska, however, the Contractor shall
202 make every effort to meet them. All prescribed fire plans shall address smoke management as a primary
203 issue and prescription parameter. Contractors may be required to conduct long-term mop-up, monitoring
204 and smoke management procedures without compensation. This may occur if PRRIP personnel determine
205 a lack of due diligence and planning occurred before ignition began or if proper procedures were not taken
206 to mop-up and secure fire after ignition was completed.

207

208

209 Submittals:

210 *Prescribed Burn Plans* - Burn plans must be developed by a NWCG qualified Rx Burn planner prior to the
211 proposed burn date. Plans will be written on a NWCG approved burn form or an alternative form approved
212 by the PRRIP Land Manager. The prescribed burn plan shall be in accordance with Nebraska Statutes
213 subsection 81-520.01 and 81-520-02. **Fully completed, legible, plans with a copy of the open burn
214 permit will be delivered to the PRRIP Land Manager within five business days following the
215 completion of each burn.** These plans must be signed by the Burn Manager. Plans can be scanned and e-
216 mailed, faxed or hand delivered. They must include all actual weather data recorded the day of the burn and
217 any other planning notes recorded before or during the burn.

218

219 Burn Managers will follow the PRRIP Weather Parameter Standards (**APPENDIX–A**) when planning and
220 implementing prescribed burns. Fire weather forecasts for the appropriate county containing the burn site
221 will be used the day of the burn. These are available from the following National Weather Service online
222 sources:

223

224 Hastings:

225 <http://www.crh.noaa.gov/gid/?n=firewx>

226 North Platte:

227 <http://www.crh.noaa.gov/lbf/forecasts/firewx/firewx.php>

228

229 **A copy of these forecasts must accompany the burn plan when submitted to the PRRIP.**

230

231 The PRRIP requires that contractors keep good records of all pre-burn planning and site evaluation
232 measures as well as actual firing techniques used during prescribed burn implementation. This includes full
233 documentation of information such as: burn purpose and objective, forecasted and actual weather
234 conditions, spot weather forecasts, soil moisture conditions (including soil saturation and depth to water in



235 wetlands), days since rain, amount of rain received on the actual burn block, Keetch-Byram drought index
236 (KBDI), etc. This information should be included in the burn plan or as an attachment.

237
238 The burn purpose and burn objective will be determined by PRRIP staff. This information will be conveyed
239 to contractors before the burn is implemented to help with burn plan development. In general, the burn
240 purpose will describe an overall goal such as site preparation or hazard reduction and the burn objective
241 will identify a specific, measurable, parameter such as remove 75% of available fuels or top-kill 50% of
242 trees less than three (3) inches diameter at breast height (DBH).

243
244 Prior to the burn, Burn Managers will evaluate the site to determine the type of ignition methods, firing
245 techniques and weather conditions needed to meet the pre-determined objective, safely conduct the burn,
246 and minimize negative effects such as duff ignition/soil damage, crown scorch, or smoke management
247 problems. This information will be included in the burn plan.

248
249 A copy of the burn plan and a site map showing burn area location, fire-lines, roads, and natural features
250 shall be in the possession of the burn manager at the time of the burn. PRRIP staff will provide burn
251 managers with a map and/or ground location point of any areas personnel should avoid. PRRIP staff may
252 instruct personnel to avoid disking, plowing or igniting fires in these areas. These sites may contain
253 historical resources, threatened and endangered plant or animal locations, public use facilities or exotic
254 plant infestations.

255
256 Contractors will notify the PRRIP's Land Manager as soon as possible but at least within 24 hours if the
257 following circumstances occur after the burn has been completed: 1) fire has escaped, 2) burn objectives
258 were not met or 3) negative conditions or smoke management problems occurred.

259
260 *Prescribed Burn Notification* - By 5:00 PM one day prior to ignition or by 8:30 AM the day of the burn,
261 the Burn Manager responsible for conducting the burn will notify the PRRIP Land Manager by *e-mail*
262 indicating the location of the burn area (Section, Township, Range), the tract name/number, the county
263 where the burn will be conducted, and the approximate acreage planned.

264
265 *Implement Burn Plans* – Prescribed fires on PRRIP lands are required to be conducted in compliance with
266 Nebraska Statutes subsection 81-520.01 and 81-520-02 and any other applicable laws. The Contractor shall
267 monitor all burn units and to determine when a unit is in prescription. All prescribed fires will also be
268 conducted in compliance with all aspects of the PRRIP Prescribed Fire Standards (*APPENDIX-A*).

269
270 Fireline installation and plowing will follow guidelines identified in the PRRIP Fireline Standards
271 (*APPENDIX-B*).

272
273 *Escaped Prescribed Fires* - In the event of an escaped prescribed fire, contractors shall initiate suppression
274 actions, contact directly affected parties, Rural Fire Protection Districts local fire chief with jurisdiction
275 over the area, and then notify the PRRIP Land Manager or the Land Specialist. In general, the PRRIP Land
276 Manager or Land Specialist will lead all discussion with affected parties. The Burn Manager responsible
277 for conducting the burn should document the conditions of the escape using photos, GPS data, maps, and a
278 written narrative describing the incident including any adverse results and any lessons learned or measures
279 that could be taken in the future to prevent another incident. Any involvement from local fire department
280 with jurisdiction over the area to contain the escape should also be documented. Written or email
281 communication outlining the general details of the incident should be sent to the PRRIP Land Manager



282 within 48 hours. A full report documenting all the above information should be submitted to the PRRIP
283 within one week following the incident.

284
285 *Shapefiles* – Before a burn is conducted, the PRRIP will provide contractors with GIS shapefiles of areas
286 to be burned. After the burn is complete, contractors must submit a shapefile showing the areas that were
287 actually burned. These shapefiles must be included with the each invoice. To receive payment, the acreage
288 identified in shapefiles must be identical to the acreage listed on the invoice to the nearest 1/10 acre.
289 Shapefiles will be projected to: NAD 1983 Nebraska State Plane Feet. The PRRIP shall field verify and
290 pay based on this acreage.

291
292 *Equipment Information:*

293 *Minimum Wildland Engine Specifications:* Wildland engines used by contractors on PRRIP burns must
294 meet or exceed all equipment specifications of the National Wildfire Coordinating Group (NWCG) for
295 Type 6 engines, with the added requirements of four-wheel drive (4X4) and foam proportioner. Type 6
296 specifications include: minimum tank size of 150 gallons; a pump rated at 50 gallons per minute (GPM) @
297 100 pounds per square inch (PSI); a hose and reel with a minimum of 50' of 1" hose; 300' feet of additional
298 1" hose; fire hydrant adapters and the ability to draft water.

299
300 On most burns, contractors will need to have a minimum of one engine and two UTV units on site.

301
302 Contractors are also required to provide all personal protective equipment (PPE) listed in the Program's
303 Prescribed Fire Standard under Training and Safety Requirements (National Wildfire Coordinating Group
304 (NWCG) Standard). (**APPENDIX – A**)

305 306 **III. PROJECT BUDGET**

307 Contractors will submit a mobilization/demobilization cost, administration cost and per-acre cost for
308 prescribed fire services. Contractor compensation will be based on the number of acres burned during the
309 performance period.

310 311 312 **IV. FIELD AND OFFICE EQUIPMENT**

313 Potential Contractors will own or acquire all field and office equipment and software required to provide
314 prescribed fire management services.

315 316 **V. CONTRACT TERMS**

317 The selected Contractor will be retained by: Nebraska Community Foundation
318 PO Box 83107
319 Lincoln, NE 68501

320
321 The Contractor will be subject to (but not limited to) the following contract terms:

322
323 *Certification/Training Requirements:* See certification and training requirements in Appendix A.

324
325 *Insurance Requirements:* If awarded, contractor shall represent and guarantee that all employees, agents,
326 servants or representatives of contractor, and all employees, agents, servants, or representatives of
327 subconsultants are covered by workers' compensation insurance as required by Nebraska Statute. Prior to
328 entering into contract with PRRIP, contractor shall furnish PRRIP with certificates of insurance, naming
329 PRRIP as named or additional insured without waiving any defense of sovereign immunity or increasing



330 the limits of PRRIP’s liability in excess of Nebraska State Statute for item (3) below, providing evidence
331 that contractor has in full force and effect the following minimum insurance with insurers authorized to do
332 business in the State of Nebraska. The certificate of insurance shall also provide that PRRIP shall be notified
333 in writing by the carrier at least 30 days prior to any cancellation of said insurance.

- 334
- 335 1. Workers’ compensation insurance as required above;
 - 336 2. Motor vehicular liability insurance with limits of not less than \$1,000,000 combined single limit which
337 insurance shall be applicable to any and all vehicles utilized by contractor to provide the services requested
338 by PRRIP;
 - 339 3. General liability insurance for all services rendered by contractor for the requested services with a
340 minimum of \$1,000,000 personal and advertising injury and \$1,000,000 general aggregate.

341
342 Contractor Liability: If a wildfire occurs as the result of the Contractor’s failure to follow the approved
343 Prescribed Fire Plan, the Contractor shall be liable for all damages and all costs for labor, subsistence,
344 equipment, supplies, and transportation deemed necessary to control the escaped fire and repair/replace all
345 PRRIP, personal and/or non-federal public property.

346
347 Open Burning Permits: A burning permit from the Rural Fire Protection Districts fire chief with jurisdiction
348 over the area to be burned is required. Names and contact information of the local fire chief will be available
349 and it will be the responsibility of the burn manager to make contact with the fire chief, present the written
350 burn plan and obtain a signed copy of the “Open Burning Permit.” A copy of this burn permit must be
351 provided to PRRIP with the final copy of burn plan for each burn unit.

352
353

354 VI. SUBMISSION REQUIREMENTS

355 All interested parties having experience providing the services listed in this RFP are requested to submit a
356 proposal.

357

358 Instructions for Submitting Proposals

359 One original and two (2) copies of your proposal and supporting documentation must be submitted by mail
360 to Tim Tunnell *no later than 12:00 PM Central Time Friday, January 31, 2020*. A proposal is late if
361 received after that time and will not be considered. Proposals should be submitted to:

362

363 Tim R. Tunnell, Senior Land Manager
364 Platte River Recovery Implementation Program
365 4111 4th Avenue, Suite 6
366 Kearney, NE 68845

367

368 Questions regarding the information contained in this RFP should be submitted to Tim Tunnell at
369 tunnelt@headwaterscorp.com. A list of compiled Contractor questions and responses will be maintained
370 on the Program web site (www.PlatteRiverProgram.org) in the same location as this RFP solicitation.

371

372

373

374

375

376

377

378 RFP Schedule

379 The ED Office expects to complete the selection process and award the work by approximately February
380 10, 2020. The following table represents the RFP schedule:

381

Description	Date	Time (Central)
Issue RFP	January 10, 2020	NA
Pre-proposal meeting	January 24, 2020	1:00 PM
Last day for respondents to submit questions regarding the RFP	January 28, 2020	12:00 PM
Proposals due from respondents	January 31, 2020	12:00 PM
Evaluation of proposals	February 3, 2020 - February 7, 2020	
Award of Work	On February 10, 2020	
Start of Work	Approximately April 1 each year	
Completion of Work	Approximately May 15 each year	

382

383 Pre-Proposal Meeting

384 A **mandatory** pre-proposal meeting of interested parties will be held on January 24, 2020 from 1:00 to 2:00
385 p.m. Central Time via conference call for the purpose of familiarizing the respondents with the work scope
386 and requirements included herein before submitting a response to this RFP. Please email Tim Tunnell
387 (tunnellt@headwaterscorp.com) for the conference call dial-in information along with a list of people from
388 your party expected to join in the pre-proposal conference call by 12:00 p.m. central time on January 22,
389 2020.

390

391 It is the Consultant's responsibility, while at the pre-proposal meeting/conference call, to ask questions
392 necessary to understand the RFP so the respondent can submit a proposal that is complete and in accordance
393 with RFP requirements. There shall be no minutes distributed by the ED Office regarding the meeting.

394

395 Proposal Content

396 Proposals must include the following contents and documentation:

397

398 1) **Executive summary** that presents a brief firm overview that condenses and highlights the contents of
399 the proposal in such a way as to provide a broad understanding of the Contractor's qualifications and
400 proposal.

401

402 2) **Project Understanding** that demonstrates the Contractor's understanding of project objectives and
403 identifies issues critical to project success.

404

405 3) **Project approach** that documents how the Contractor would organize and execute the scope of work
406 detailed in this RFP and provides project team organization, certifications, and responsibilities and
407 specifies which team members will work on each specific task.

408

409 4) **Qualifications and project experience** relevant to this project including the involvement/role of the
410 proposed team in those projects. A sample project experience/reference form is included in Section
411 VII.

412

413 5) **Equipment** list that includes all equipment that would be mobilized for this project.

414

415 6) **Cost rate** per acre for prescribed fire implementation. A cost form has been included in Section VII.



416
417 7) **Description of insurance** shall be provided with the proposal. Proof of insurance will be required
418 before a contract is issued. Minimum insurance requirements are described in Section V.
419

420 8) **Affirmative statement** that neither the firm nor the principals of the firm are on the federal suspended
421 and disbarred list. If the firm has a DUNS number, please provide to assist in verification.
422

423 Criteria for Evaluating Proposals

424 The GC will appoint a Proposal Selection Panel that will evaluate all proposals and select a Consultant
425 based on the following principal considerations:
426

- 427 1. Understanding of the overall objectives of the project and approach to meeting those objectives.
428
- 429 2. Qualifications and experience completing comparably sized prescribed burn projects safely and in a
430 timely manner.
431
- 432 3. The number/type of qualified personnel/equipment proposed to be dedicated to the project.
433
- 434 4. Ability to provide turn-key prescribed burns services.
435
- 436 5. Price proposal.
437

438 The winning proposal will be selected to best meet overall project objectives. Should the successful
439 Proposers be unable at any time to accomplish the work they have been contracted for or meet any of the
440 requirements or standards listed in this Proposal, the next ranked Contractor may be contacted to provide
441 the required work.
442

443 Award Notice

444 After completing the evaluation of all proposals, the Proposal Selection Panel will select a Contractor. That
445 firm will negotiate with the ED Office to establish a fair and equitable contract. If an agreement cannot be
446 reached, a second firm will be invited to negotiate and so on. If the Program is unable to negotiate a
447 mutually satisfactory contract with a Consultant, it may, at its sole discretion, cancel and reissue a new
448 RFP.
449

450 Program Perspective

451 The Program GC has the sole discretion and reserves the right to reject any and all proposals received in
452 response to this RFP and to cancel this solicitation if it is deemed in the best interest of the Program to do
453 so. Issuance of this RFP in no way constitutes a commitment by the Program to award a contract, or to pay
454 Contractor's costs incurred either in the preparation of a response to his RFP or during negotiations, if any,
455 of a contract for services. The Program also reserves the right to make amendments to this RFP by giving
456 written notice to Contractors, and to request clarification, supplements, and additions to the information
457 provided by a Contractor.
458

459 By submitting a proposal in response to this solicitation, Contractors understand and agree that any selection
460 of a Contractor any decision to reject any or all responses or to establish no contracts shall be at the sole
461 discretion of the Program. To the extent authorized by law, the Contractor shall indemnify, save, and hold
462 harmless the Nebraska Community Foundation, the states of Colorado, Wyoming, and Nebraska, the
463 Department of the Interior, members of the GC, and the ED Office, their employees, employers, and agents,



464 against any and all claims, damages, liability, and court awards including costs, expenses, and attorney fees
465 incurred as a result of any act or omission by the Contractor or its employees, agents, sub-Contractors, or
466 assignees pursuant to the terms of this project. Additionally, by submitting a proposal, Contractors agree
467 that they waive any claim for the recovery of any costs or expenses incurred in preparing and submitting a
468 proposal.

469

470 **VII. PROPOSAL RESPONSE FORMS**

471 The following forms are to be submitted as part of Contractor proposals.

472

473



PLATTE RIVER RECOVERY IMPLEMENTATION PROGRAM

**2020-2022 PRESCRIBED FIRE MANAGEMENT SERVICES
COST RATE:**

474
475
476
477
478
479
480
481
482
483
484
485

Lump sum rates will include all pre-burn planning (burn unit reconasissance, burn plan development, obtaining burn permit from appropriate fire department, neighbor notifications), fire-line preparation, mobilization and demobilization. Per-acre rates will include ignition and stand-by time, mop-up and monitoring time (within the first 24 hours after ignition is complete) as well as all other labor, materials, equipment, tools, transportation, equipment mobilization, and supplies required to complete the work.

The Contractor is required to submit unit prices for all work Items below.

Item No.	Description	Unit	Unit Price
001	Mobilization and Demobilization ¹	LS	\$ _____
002	Prescribed Fire Administration ²	LS	\$ _____
003	Prescribed Fire Implementation ³	AC	\$ _____

486

¹ Item includes costs to mobilize all personnel and equipment needed to complete the work from contractor’s base of operations to NE and costs to demobilize from NE to contractor’s base of operations at the termination of the performance period.

² Item includes burn unit reconnaissance, burn plan development, obtaining burn permit from appropriate fire department, and neighbor notifications for each unit.

³ Item includes cost of labor for fully equipped NWCG crew for a prescribed burning detail within PRRIP project area. This includes ignition and stand by time, mop up and monitoring time within the first 24 hours after ignition is complete on each unit. Item also includes all materials, equipment, tools, transportation, fuel and supplies to complete the work for a prescribed burning detail.



PLATTE RIVER RECOVERY IMPLEMENTATION PROGRAM

SIMILAR PROJECTS:

487
488
489
490
491
492
493
494
495
496
497
498
499
500
501
502
503
504
505
506
507
508
509
510
511
512
513
514
515
516
517
518
519
520
521
522
523
524
525
526
527
528
529
530
531
532
533
534
535

COMPLETED PROJECT: _____

AGENCY/COMPANY: _____

CONTACT: _____ TELEPHONE: _____

START DATE: _____ COMPLETION DATE: _____

(month/year)

(month/year)

NUMBER OF ACRES RESPONSIBLE FOR BURNING/YEAR: _____

DESCRIPTION OF STAND TYPE(S)/FUEL LEVEL(S) BURNED: _____

IGNITION METHOD(S) USED: _____

TOTAL ACRES BURNED: _____

CERTIFIED PRESCRIBED BURN MANAGER(S) ASSIGNED TO PROJECT: _____

COMPLETED PROJECT: _____

AGENCY/COMPANY: _____

CONTACT: _____ TELEPHONE: _____

START DATE: _____ COMPLETION DATE: _____

(month/year)

(month/year)

NUMBER OF ACRES RESPONSIBLE FOR BURNING/YEAR: _____

DESCRIPTION OF STAND TYPE(S)/FUEL LEVEL(S) BURNED: _____

IGNITION METHOD(S) USED: _____

TOTAL ACRES BURNED: _____

CERTIFIED PRESCRIBED BURN MANAGER(S) ASSIGNED TO PROJECT: _____



536 COMPLETED PROJECT: _____

537

538 AGENCY/COMPANY: _____

539 CONTACT: _____ TELEPHONE: _____

540

541 START DATE: _____ COMPLETION DATE: _____

542 (month/year) (month/year)

543 NUMBER OF ACRES RESPONSIBLE FOR BURNING/YEAR: _____

544

545 DESCRIPTION OF STAND TYPE(S)/FUEL LEVEL(S) BURNED: _____

546 _____

547 _____

548

549 IGNITION METHOD(S) USED: _____

550

551 TOTAL ACRES BURNED: _____

552

553 CERTIFIED PRESCRIBED BURN MANAGER(S) ASSIGNED TO PROJECT: _____

554 _____

555 _____

556

557

558

559

560 COMPLETED PROJECT: _____

561

562 AGENCY/COMPANY: _____

563 CONTACT: _____ TELEPHONE: _____

564

565 START DATE: _____ COMPLETION DATE: _____

566 (month/year) (month/year)

567 NUMBER OF ACRES RESPONSIBLE FOR BURNING/YEAR: _____

568

569 DESCRIPTION OF STAND TYPE(S)/FUEL LEVEL(S) BURNED: _____

570 _____

571 _____

572

573 IGNITION METHOD(S) USED: _____

574

575 TOTAL ACRES BURNED: _____

576

577 CERTIFIED PRESCRIBED BURN MANAGER(S) ASSIGNED TO PROJECT: _____

578 _____

579 _____

580

581

582

583



PLATTE RIVER RECOVERY IMPLEMENTATION PROGRAM

REFERENCES:

(Names/address/telephone of three clients who can attest to your experience as it relates to the services you are proposing.)

584
585
586
587
588
589
590
591
592
593
594
595
596
597
598
599
600
601
602
603
604
605
606
607
608
609
610
611
612
613

FIRM NAME: _____

ADDRESS: _____

CONTACT PERSON: _____

TELEPHONE: _____

EMAIL: _____

FIRM NAME: _____

ADDRESS: _____

CONTACT PERSON: _____

TELEPHONE: _____

EMAIL: _____

FIRM NAME: _____

ADDRESS: _____

CONTACT PERSON: _____

TELEPHONE: _____

EMAIL: _____



614 **APPENDIX - A**
615 **PLATTE RIVER RECOVERY IMPLEMENTATION PROGRAM**
616 **PRESCRIBED FIRE STANDARDS**

617
618 **INTRODUCTION**

619 These Standards are designed to define procedures to be used by personnel involved in the planning,
620 reviewing, approving and implementing of prescribed fire on Platte River Recovery Implementation
621 Program (PRRIP) property.

622
623 **GUIDELINES**

624 **1. Prescribed Fire Implementation**

625
626 Prescribed fires on PRRIP lands are required to be conducted in compliance with Nebraska Statutes
627 subsection 81-520.01 and 81-520-02 and any other applicable laws.

628
629 Fireline installation and plowing will follow guidelines identified in the PRRIP Fireline Standards
630 document (Appendix B).

631
632 By 5:00 PM one day prior to ignition or by 8:30 AM the day of the burn, the Burn Manager responsible
633 for conducting the burn will notify the PRRIP Land Manager by *e-mail* indicating the location of the burn
634 area (Section, Township, Range), the tract name, the county where the burn will be conducted, and the
635 approximate acreage planned. The Land Specialist and the PRRIP Receptionist will also be copied on this
636 e-mail. In the event of an escaped prescribed fire, contractors should initiate suppression actions, contact
637 local fire chief with jurisdiction over the area, and then notify the PRRIP Land Manager or the Land
638 Specialist. If the escape impacts private property, the landowner should be contacted by the Land
639 Specialist. The Burn Manager responsible for conducting the burn should document the results of the
640 escape using photos, GPS, maps, and a written narrative describing the incident including any adverse
641 results; any involvement from local fire department with jurisdiction over the area to contain the escape
642 should also be documented. Written communication outlining the general details of the incident should be
643 sent to the PRRIP Land Manager within 48 hours. A full report documenting the all the above
644 information should be submitted within one week following the incident.

645
646 **2. Prescribed Burn Manager Requirements**

647
648 All prescribed fires on PRRIP land will be managed by a NWCG Certified Prescribed Burn Boss as
649 defined in the Wildland Fire and Prescribed Fire Qualification System Guide published by the National
650 Wildfire Coordinating Group (NWCG), Publication Numbers PMS 310-1 and NFES 1414 (January 2009)
651 and shall have detailed functional knowledge and specialized experience with prescribed burning in
652 grassland fuels. The certified Burn Manager must be present on site at all times during burn operations.
653 An updated copy of the Burn Manager's current certification status card must be provided to Land
654 Manager prior to ignition. All required personnel, equipment, firebreaks and permits as established by law
655 must also be accounted for prior to ignition.

656 **3. Training/Safety Criteria**

657
658 Due to the inherent dangers of working with fire, minimum requirements must be implemented to ensure
659 that personnel are adequately trained and equipped to participate in a prescribed fire. These minimum



660 requirements apply to all participants involved in prescribed fire on PRRIP lands including PRRIP
661 personnel, burn contractors, cooperators from other agencies and students. The Contractor shall ensure
662 that all of his personnel are qualified to perform the duties of ignition, holding, patrol and mop-up as
663 defined in the Wildland Fire and Prescribed Fire Qualification System Guide published by NWCG,
664 Publication Numbers PMS 310-1 and NFES 1414 (January 2009).

665
666 Personal Protection Equipment:

667 The Contractor shall ensure that all crew members arrive at the work site with required personal
668 protective clothing and equipment, including: a serviceable National Fire Protection Association (NFPA)
669 approved fire shelter; a NFPA approved hardhat; eye protection; hearing protection; NFPA approved
670 flame resistant shirt and pants; NFPA approved leather gloves; and heavy-duty, leather, laced boots with
671 non-skid soles and tops at least eight inches high. The Contractor shall ensure the personal protective
672 clothing and equipment is operable and maintained in good repair. All personnel shall wear personal
673 protective clothing and equipment during all burning and mop-up operations. All personnel on a burn site
674 must have two-way radio communications with the burn manager and required suppression equipment.
675 Contractors are also encouraged to obtain radios that are programmable.

676 677 4. Prescribed Burn Purpose/Objectives

678
679 The burn purpose and objective for each prescribed burn will be determined by PRRIP staff. This
680 information will be conveyed to contractors before the burn is implemented to help with burn plan
681 development. In general, the burn purpose will describe an overall goal such as site preparation or hazard
682 reduction and the burn objective will identify a specific, measurable, parameter such as remove 75% of
683 available fuels. Prior to the burn, Burn Managers will evaluate the site to determine the type of ignition
684 methods, firing techniques and weather conditions needed to meet the pre-determined objective, safely
685 conduct the burn, and minimize negative effects such as duff ignition/soil damage, crown scorch, or
686 smoke management problems. This information will be included in the burn plan.

687 688 5. Prescribed Burn Plans

689
690 Burn plans will be written on a NWCG approved burn form or an alternative form approved by the
691 PRRIP Land Manager. Fully completed, legible, burn plans will be delivered to the PRRIP Land Manager
692 within one week following the completion of the burn. These plans must be signed by the Burn Manager.
693 Burn Managers will follow the PRRIP's Weather Parameter Standards (Appendix-A) when planning and
694 implementing prescribed burns. Fire weather forecasts for the appropriate county containing the burn site
695 will be used the day of the burn. These are available from the following National
696 Weather Service online sources:

697
698 Hastings:

699 <http://www.srh.noaa.gov/jax/text.php?sid=JAX&pil=FWF>

700

701 North Platte:

702 <http://www.srh.noaa.gov/productview.php?pil=TAEFWFTA&version=0>

703

704 **A copy of these forecasts must accompany the burn plan when**
705 **submitted to the PRRIP.**

706



707 The PRRIP requires that contractors keep good records of all pre-burn planning and site evaluation
 708 measures as well as actual firing techniques used during prescribed burn implementation. This will
 709 include full documentation of information such as: burn purpose and objective, Forecasted and actual
 710 weather conditions, soil moisture conditions (including soil saturation and depth to water in wetlands), the
 711 location of heavy duff layers, days since rain, and amount of rain received on the actual burn block,
 712 Keetch-Byram drought index (KBDI), etc. This information should be included in the burn plan or as an
 713 attachment. A copy of the burn plan and a site map showing burn area location, firelines, roads, and
 714 natural features shall be in the possession of the burn manager at the time of the burn. PRRIP staff will
 715 provide burn managers with a map and/or ground location point of any areas personnel should avoid.
 716 PRRIP staff may ask personnel to avoid disking, plowing or igniting fires in these areas. These sites may
 717 contain historical resources, threatened and endangered plant or animal locations, public use facilities or
 718 exotic plant infestations. Contractors will notify the PRRIP’s Land Manager within 24 hours if the
 719 following circumstances occur after the burn has been completed: 1) fire has escaped, 2) burn objectives
 720 were not met or 3) negative publicity or smoke management problems occurred.

721
722 6. GIS Requirements

723
724 Contractors must submit a shapefile showing acres burned with each invoice. To receive payment, the
 725 acreage identified in shapefile must be identical to the acreage listed on the invoice to the nearest 1/10
 726 acre. PRRIP staff will field verify and make payment based on this acreage. Shapefiles will be projected
 727 to: NAD 1983 Nebraska State Plane Feet.
 728

729 **WEATHER PARAMETER STANDARDS**

Relative Humidity	<ul style="list-style-type: none"> • > or = 25%
Fine Dead Fuel Moisture	<ul style="list-style-type: none"> • 6% Minimum • Based on predicted fine fuel moisture (from tables) or direct measurement
Wind Speed	<ul style="list-style-type: none"> • Maximum mid-flame wind speed is 15 mph • Maximum forecast 20 ft wind speed is 18 mph
Category Day	<ul style="list-style-type: none"> • Category II in rural areas unaffected by smoke • Category III when there are smoke sensitive areas downwind
KBDI	<ul style="list-style-type: none"> • = or < 400
Palmer Drought Index	<ul style="list-style-type: none"> • At least -1
Temperature	<ul style="list-style-type: none"> • 90°F Maximum.
Smoke Management	<ul style="list-style-type: none"> • 9 mph Minimum transport wind speed • 2,000 ft Minimum Mixing Height

730
731



APPENDIX – B
PLATTE RIVER RECOVERY IMPLEMENTATION PROGRAM
FIRELINE STANDARDS

732
733
734
735
736
737
738
739
740
741
742
743
744
745
746
747
748
749
750
751
752
753
754
755
756
757
758
759
760
761
762
763
764
765
766
767
768
769
770
771
772
773
774
775
776
777
778
779

INTRODUCTION:

These Standards are designed to be used by contractors, cooperators and Platte River Recovery Implementation Program (PRRIP) employees in the planning, reviewing, approving and construction of firelines.

GUIDELINES:

A prescribed burn will not be conducted without adequate firebreaks surrounding the burn plot. The installation and maintenance of firelines along PRRIP ownership boundaries and main public use roads is primary while minimizing interior lines whenever possible. Natural and artificial firebreaks should be utilized before installing new lines. This will help minimize soil erosion, hydrologic alterations, and impacts on natural plant communities and historic or prehistoric resources. Types of natural firebreaks include: rivers, lakes, streams, wetlands, etc. Artificial firebreaks are existing disturbances, facilities or cleared areas that may include: firelines, roads, ditches, trails, utility easements, blacklines and foam.

PRRIP personnel must approve the establishment of new firelines prior to construction. This approval will consider justification of need and route of firelines. Consideration will be given to the effect of the proposed fireline route on hydrology. Fireline routes will also be assessed for threatened and endangered species, archeological sites, public access facilities and exotic plants to avoid disturbing or spreading these. The addition of new firelines should be considered only if necessary for accomplishing safe prescribed burning. When possible, firelines should be coupled with other types of firebreaks (natural/artificial) to minimize ground disturbance.

Prescribed fires that escape or become out-of-prescription are often subject to emergency plowing. On PRRIP land, the preferred method for controlling such a fire is with a brush truck or other water delivery vehicle or to let the fire burn to the nearest firebreak. If these methods cannot be safely and effectively implemented, a tractor and fire plow should be used for suppression purposes.

PROCEDURES:

Fireline Installation and Maintenance:

- a) Fireline installation should not adversely impact listed plant or animal species, archeological resources, public use facilities such as bike or hiking trails, or enable the spread of exotic plant infestations. PRRIP staff will provide maps and/or ground location points of any areas to be avoided. These sites may contain historical resources, threatened and endangered plant or animal locations, public use facilities or exotic plant infestations.

- b) The PRRIP requires that all fireline installation and maintenance work produce a flat line that does not contain berms that may block or channel water flow. Root mats or heavy vegetation should be spread out within the block to avoid fuel build-up along the edges. The PRRIP prefers that firelines be reworked and maintained using



- 780 a heavy duty (forestry) harrow. Firelines installed with a dozer blade
781 or fire plow will be reworked to yield a flat line. The use of a fireplow
782 or dozer blade to install a fireline must be approved by the PRRIP
783 Land Manager.
- 784
- 785 c) If a fire plow is used to install a fireline, or control an escaped or
786 out of prescription fire, the burn contractor must rework the plowed
787 lines before demobilizing from site.
- 788
- 789 d) If a fireplow is used to control an escaped or out of prescription
790 fire, plow depth should be no greater than required to expose
791 mineral soil and stop the fire. A map of existing firebreaks, roads,
792 natural features and avoidance areas should be in the possession of
793 the plow operator and crew members at all times.
- 794
- 795 e) Firelines will not be constructed so that they create new travel
796 corridors or paths through or around areas that are cabled, gated, or
797 fenced. If a fire line is being installed along a public use road, disking
798 must be off to one side of the road, but not in the ditch, to allow
799 vehicles to continue to use the road.
- 800
- 801 f) Firelines should follow the contour of the land when possible, to
802 avoid downslope erosion. Lines should be stabilized if subject to
803 water flow by the use of water bars or turnouts.
- 804 g) Plow and harrow depth should be kept at the minimum possible at
805 all times.
- 806
- 807 h) Width of exposed mineral soil should be 6 to 8 feet for interior
808 lines after reworking.
- 809
- 810 i) Perimeter lines are critical to ensure that fires do not leave PRRIP
811 lands and impact private property. They should be wider than interior
812 lines and should be cleared 12 to 16 feet of trees and overhanging
813 vegetation. Wider lines may be required because of adjacent
814 property with heavy fuels or residential structures. Width of exposed
815 soil should be 8 to 10 feet and the line must be reworked if newly
816 plowed.
- 817
- 818 j) Wetlands should be avoided when installing firelines. A line
819 running up to a wetland incorporating it as a fire break is the best
820 method providing it does not act as a drain to channel water out of,
821 or cause erosion into the wetland. Wetlands should be burned when
822 it is possible to mimic the historical fire frequency and when it can be
823 done without risk of an organic peat layer (duff) fire.
- 824
- 825 k) When connecting firelines to wetlands and other hydrologic
826 features such as intermittent/perennial streams, rivers, lakes,
827 sinkholes, etc., firelines should stop a minimum of 75 feet from the



828 edge of these features. A wetline or handline can be used to tie in
829 the remaining distance.

830
831 l) Firelines should not follow the edge of a natural plant community
832 because it may disturb the ecotone and destroy rare plants that
833 often occupy this zone.

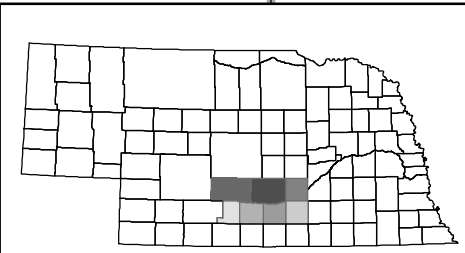
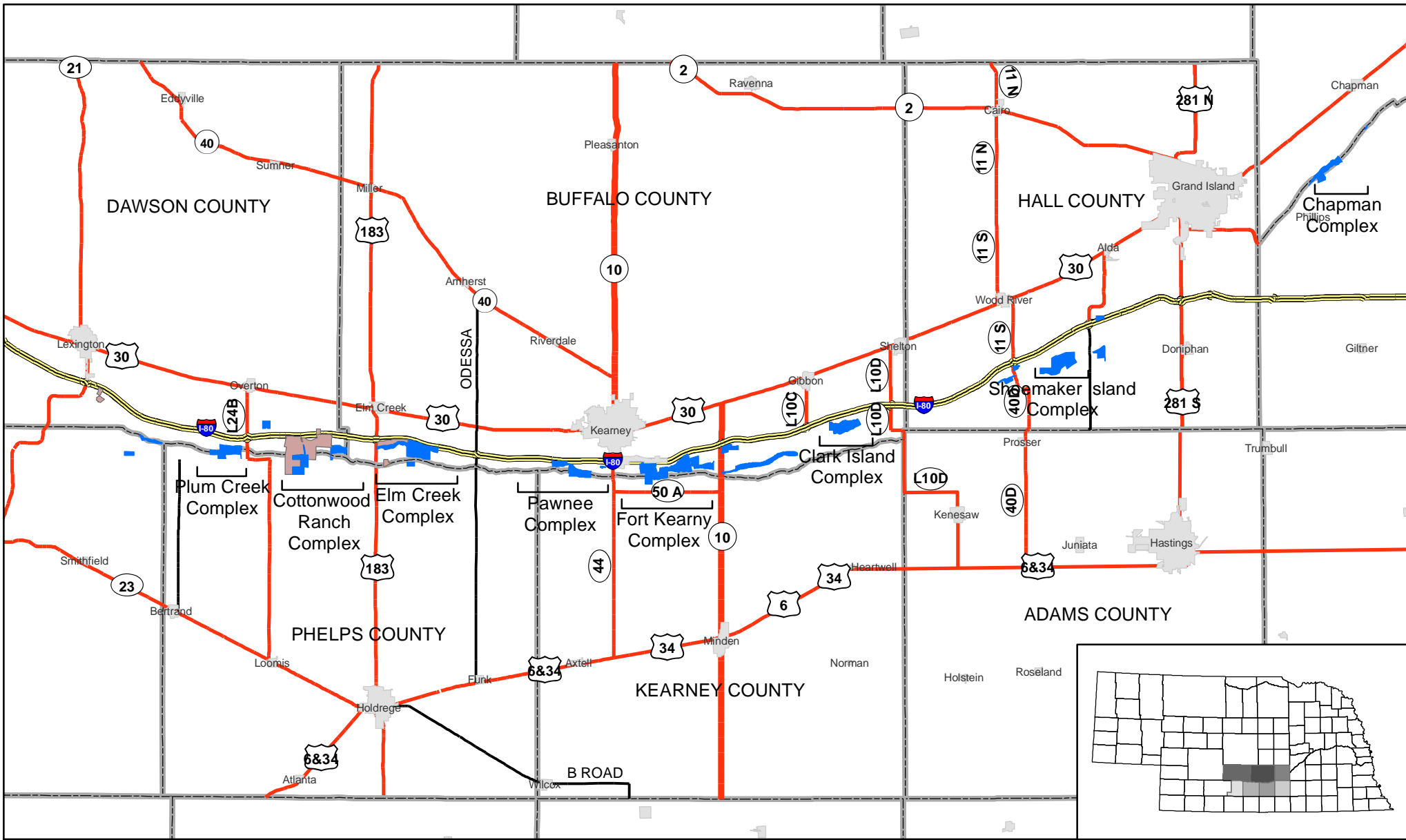
834
835 m) Primary firelines such as tract boundaries should be maintained
836 at least once a year by disking if needed. Adjacent areas may
837 require mowing. When possible, fireline maintenance should occur
838 during early growing season.

839
840



841
842

APPENDIX - C



- Legend**
- County
 - Property Boundary**
 - PRRIP
 - NPPD



10 Miles

**PRRIP
HABITAT COMPLEXES**

Date: 11/15/2019
By: TRT

Figure 1

LEXINGTON VOL FIRE DEPT
FIRE CHIEF: DAHLAS HOLBEIN
BOX 721 LEXINGTON 68850
(308) 325-2737

OVERTON VOL FIRE DEPT
FIRE CHIEF: CHAD BEATTY
PO BOX 268 OVERTON 68863-005
(308) 325-5415

Dawson

Gosper

Phelps

2012004

2009007

2009003

Base Layer: July 2018 PRRIP Aerial Imagery



Legend

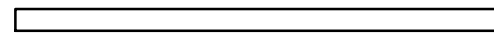
 County

VOLUNTEER FIRE DISTRICTS

 LEXINGTON VOL FIRE DEPT

 OVERTON VOL FIRE DEPT



 Miles

2

PLUM CREEK COMPLEX
FY 2020-2022

Date: 11/19/19
By: TRT

Figure 2

OVERTON VOL FIRE DEPT
FIRE CHIEF: CHAD BEATTY
PO BOX 268 OVERTON 68863-0058
(308) 325-5415

Buffalo

Dawson

Phelps

ELM CREEK VOL FIRE DEPT
FIRE CHIEF: BOB REINKE
PO BOX 121 ELM CREEK 68836
(308) 240-3473

Base Layer: July 2018 PRRIP Aerial Imagery



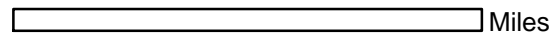
Legend

 County

VOLUNTEER FIRE DISTRICTS

 ELM CREEK VOL FIRE DEPT

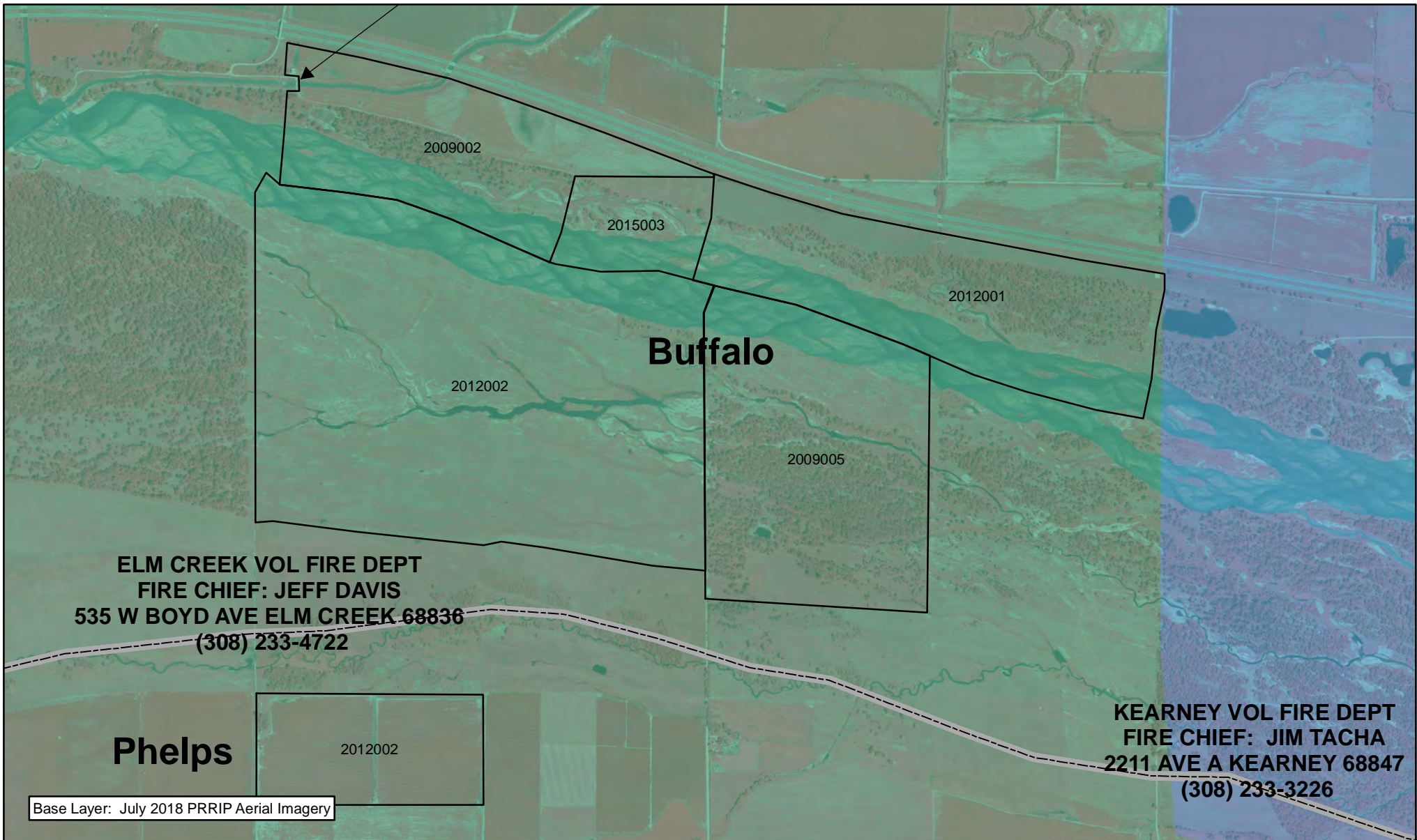
 OVERTON VOL FIRE DEPT



COTTONWOOD RANCH
COMPLEX
FY 2020-2022

Date: 11/19/19
By: TRT

Figure 3



Legend

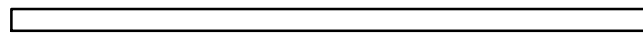
 County

VOLUNTEER FIRE DISTRICTS

 ELM CREEK VOL FIRE DEPT

 KEARNEY VOL FIRE DEPT



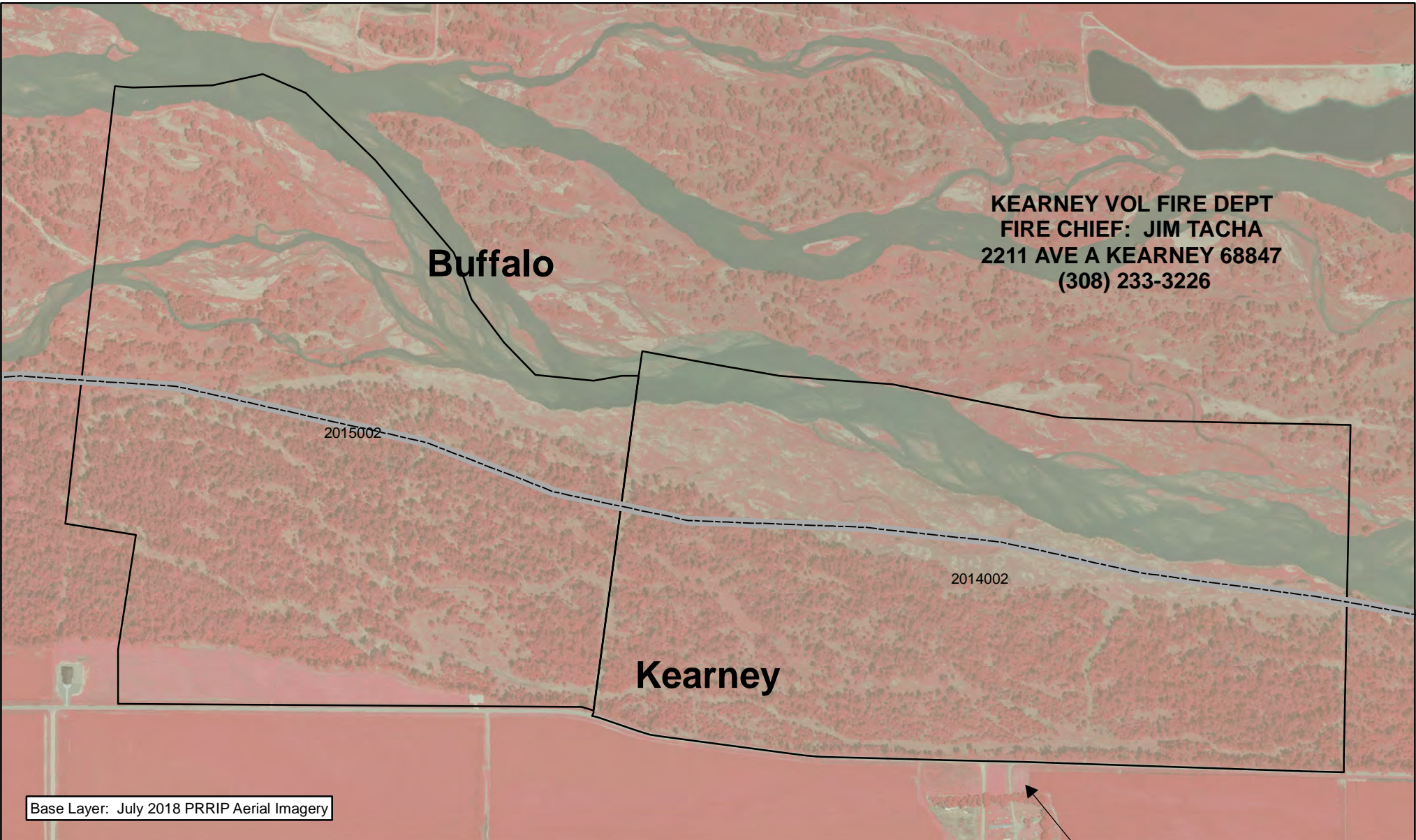
 Miles

1

ELM CREEK
COMPLEX
FY 2020-2022

Date: 11/19/19
By: TRT

Figure 4



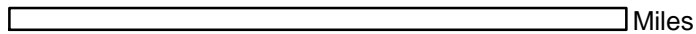
Legend



VOLUNTEER FIRE DISTRICTS

ELM CREEK VOL FIRE DEPT

KEARNEY VOL FIRE DEPT



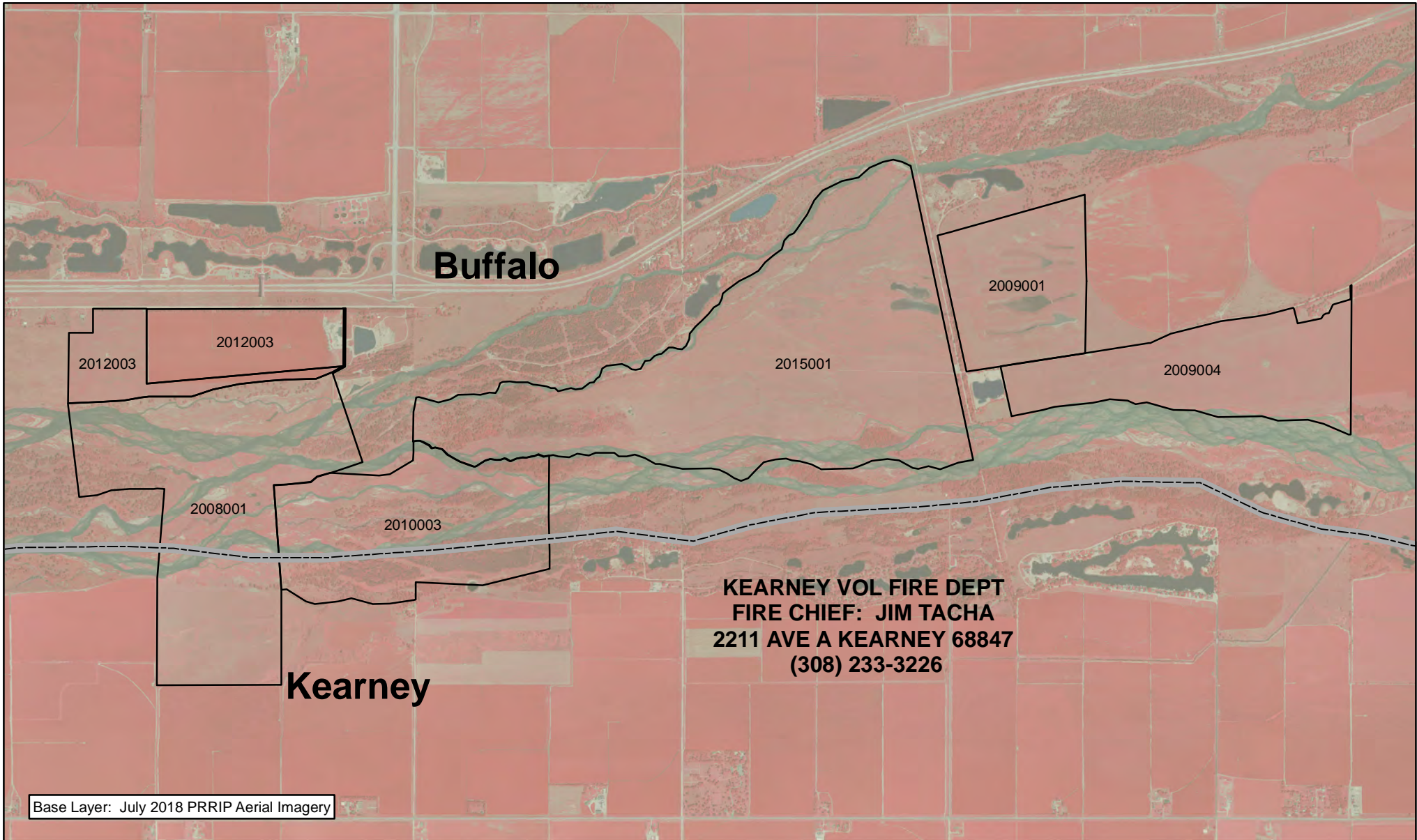
0.5

PAWNEE
COMPLEX
FY 2020-2022

Date: 11/19/19

By: TRT

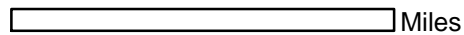
Figure 5



Legend

VOLUNTEER FIRE DISTRICTS

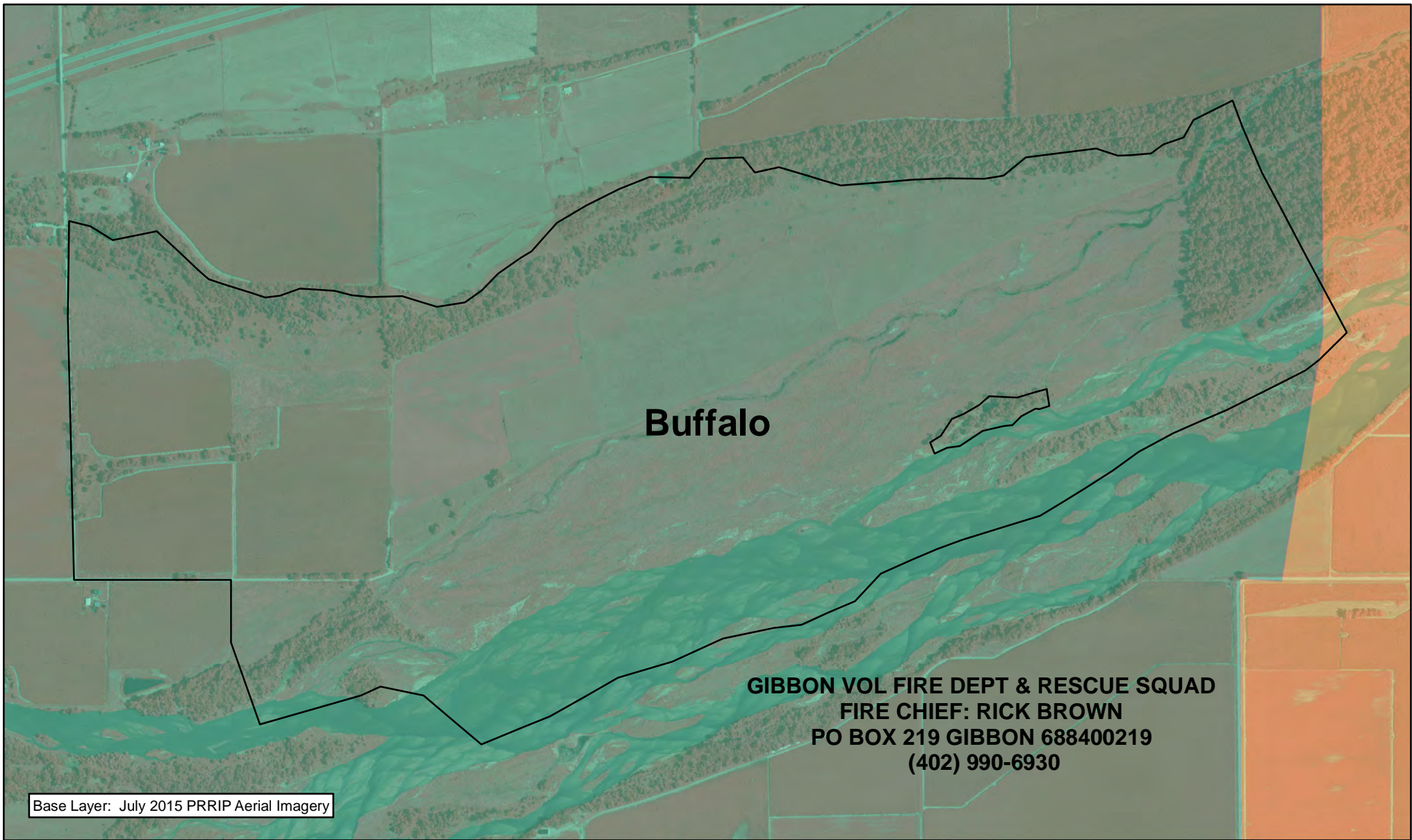
- GIBBON VOL FIRE DEPT & RESCUE SQUAD
- KEARNEY VOL FIRE DEPT






**FORT KEARNEY
COMPLEX
FY 2020-2022**

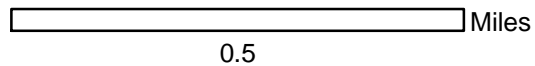
Date: 11/19/19
By: TRT

Figure 6



Legend

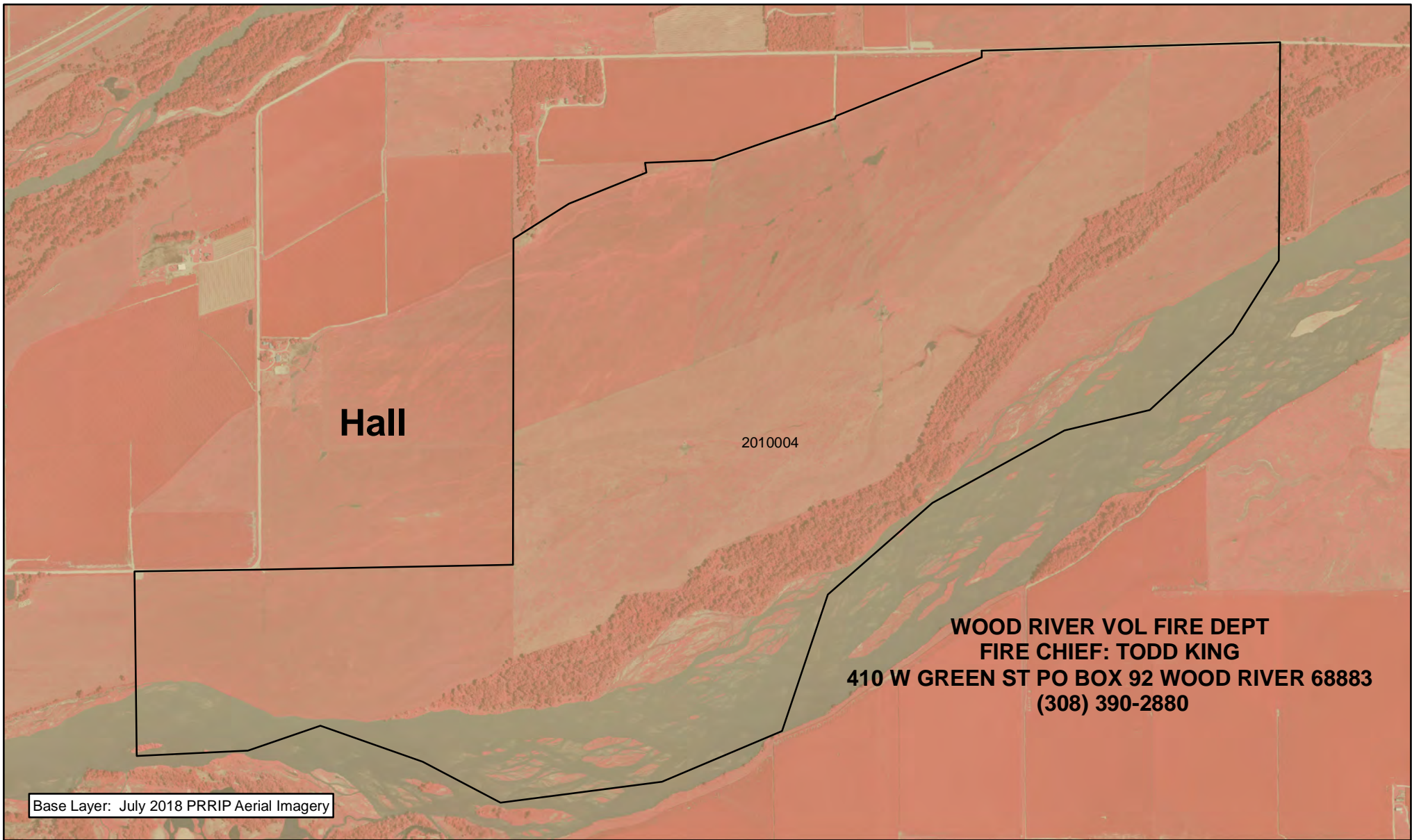
-  County
- VOLUNTEER FIRE DISTRICTS**
-  GIBBON VOL FIRE DEPT & RESCUE SQUAD
-  SHELTON VOL FIRE & RESCUE



**CLARK ISLAND
COMPLEX
FY 2020-2022**

Date: 11/19/19
By: TRT

Figure 7

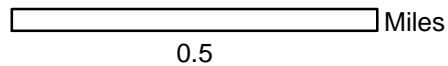


Legend

 County

VOLUNTEER FIRE DISTRICTS

 WOOD RIVER VOL FIRE DEPT



SHOEMAKER ISLAND
COMPLEX
FY 2020-2022

Date: 11/19/19
By: TRT

Figure 8

**CHAPMAN VOL FIRE DEPT
FIRE CHIEF: FRANCIS MCCULLA
PO BOX 88 CHAPMAN 68827
(308) 986-2282**

**MARQUETTE VOL FIRE DEPT
FIRE CHIEF: DJ FRAUENDORFER
PO BOX 54 MARQUETTE 68854
(402) 854-3131**

Merrick

Hamilton

**PHILLIPS VOL FIRE DEPT
FIRE CHIEF: JASON FRY
PO BOX 248 PHILLIPS 68865
(402) 886-2936**




Base Layer: July 2018 PRRIP Aerial Imagery

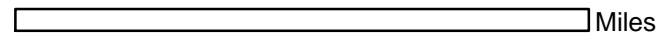


Legend

 County

VOLUNTEER FIRE DISTRICTS

-  CHAPMAN VOL FIRE DEPT
-  MARQUETTE VOL FIRE DEPT
-  PHILLIPS VOL FIRE DEPT

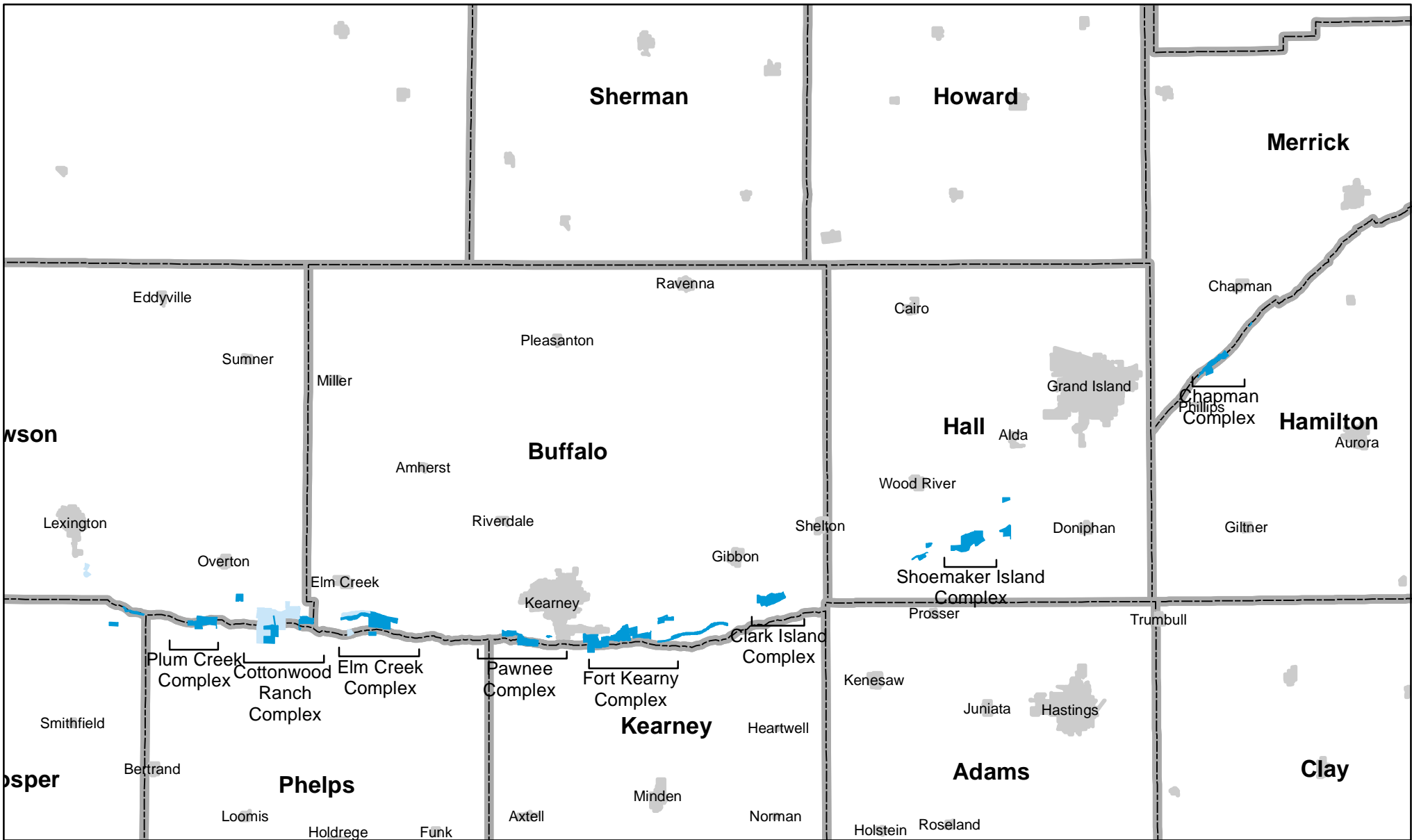


1

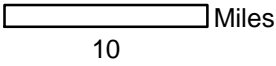
**CHAPMAN
COMPLEX
FY 2020-2022**

Date: 11/19/19
By: TRT

Figure 9



- Legend**
- County
 - Communities
 - NPPD
 - PRRIP



COMMUNITIES AT RISK

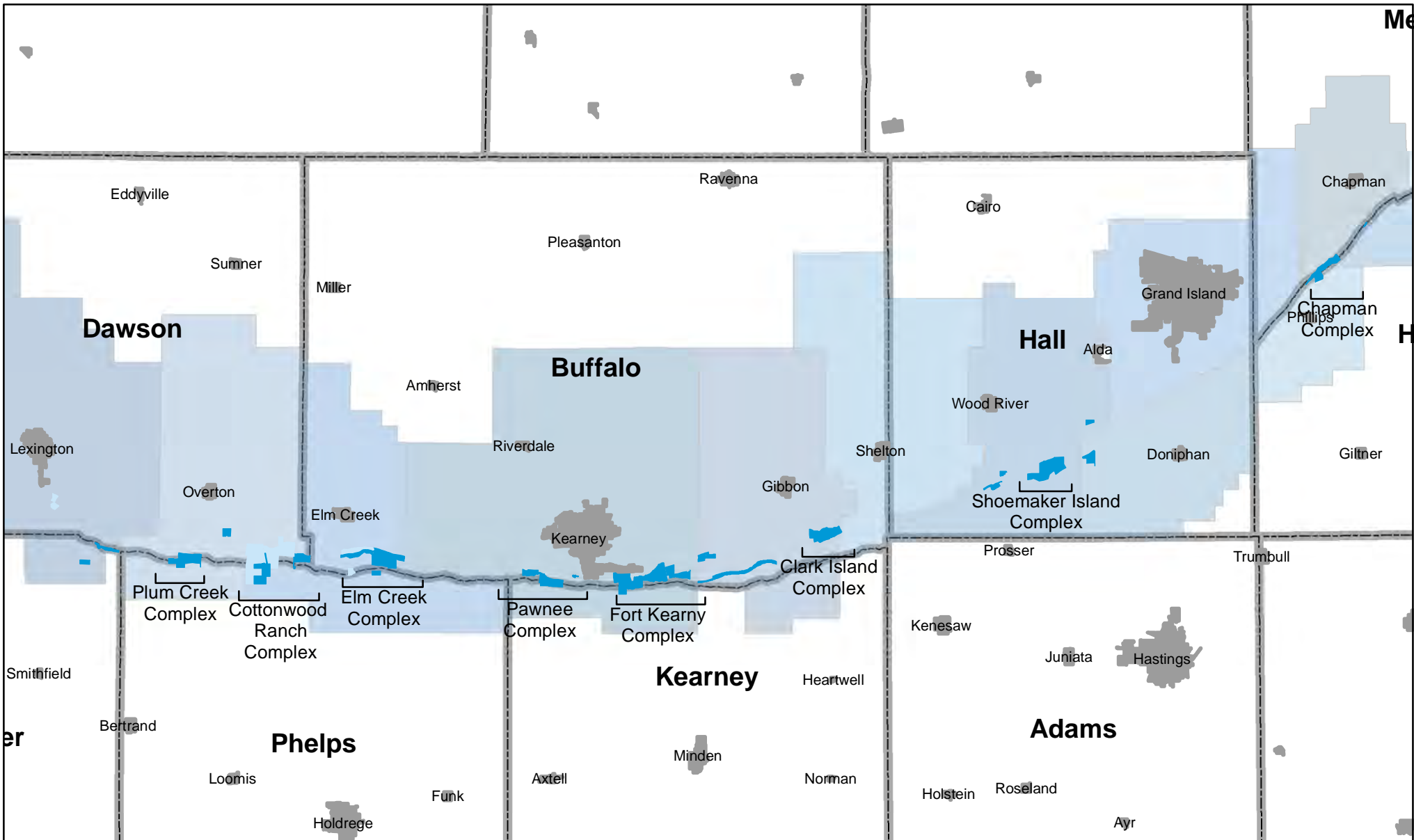
FY 2020-2022

Date: 11/19/19

By: TRT

Figure-10





Legend

- County
 - Communities
 - NPPD
 - PRRIP
- VOLUNTEER FIRE DISTRICTS**
- MARQUETTE VOL FIRE DEPT
 - PHILLIPS VOL FIRE DEPT
 - CHAPMAN VOL FIRE DEPT
 - LEXINGTON VOL FIRE DEPT
 - OVERTON VOL FIRE DEPT
 - ELM CREEK VOL FIRE DEPT
 - KEARNEY VOL FIRE DEPT
 - GIBBON VOL FIRE DEPT & RESCUE SQUAD
 - SHELTON VOL FIRE & RESCUE
 - WOOD RIVER VOL FIRE DEPT
 - DONIPHAN VOLUNTEER FIRE DEPT
 - GRAND ISLAND RURAL FIRE DEPT



PLATTE RIVER
RECOVERY IMPLEMENTATION PROGRAM



10 Miles

10

**CENTRAL PLATTE
FIRE DISTRICTS**

FY 2020-2022

Date: 11/19/19

By: TRT

Figure-11