



REQUEST FOR QUOTATION

PROJECT: (P21-009) Fort Kearny Habitat Enhancement
LOCATION: PRRIF Property 2015001
NEAR: Kearney, Nebraska
REQUEST DATE: July 19, 2021
MANDATORY SITE
SHOWING: **July 26, 2021 – 3:00 pm central**
CLOSING DATE: **July 30, 2020 – 5:00 pm central**
START OF PROJECT: **August 15, 2021**
POINT OF CONTACT: Tim R. Tunnell, Senior Land Manager
Headwaters Corporation
4111 4th Ave, Suite 6
Kearney, NE 68845

The undersigned acknowledges receipt of the following plans and specifications:

- # 1 (___) Whooping Crane Incidental Take Avoidance Procedures
- # 2 (___) Sheet 1 - Cover
- # 3 (___) Sheet 2 – Layout
- # 4 (___) Sheet 3 – In channel Tree Clearing

PROJECT DESCRIPTION:

The contractor will be responsible for clearing and grubbing trees and brush as identified on sheet 3. Trees and brush will be relocated to the designated burn pile and be burned and buried onsite.

Contractor is responsible for obtaining appropriate permits and to call the “Diggers Hotline” number to verify any conflicting utilities prior to beginning any work.

The undersigned, having examined the drawings and investigated the local conditions affecting the project work, hereby proposes to perform the project in accordance with the contract documents for the following rates:

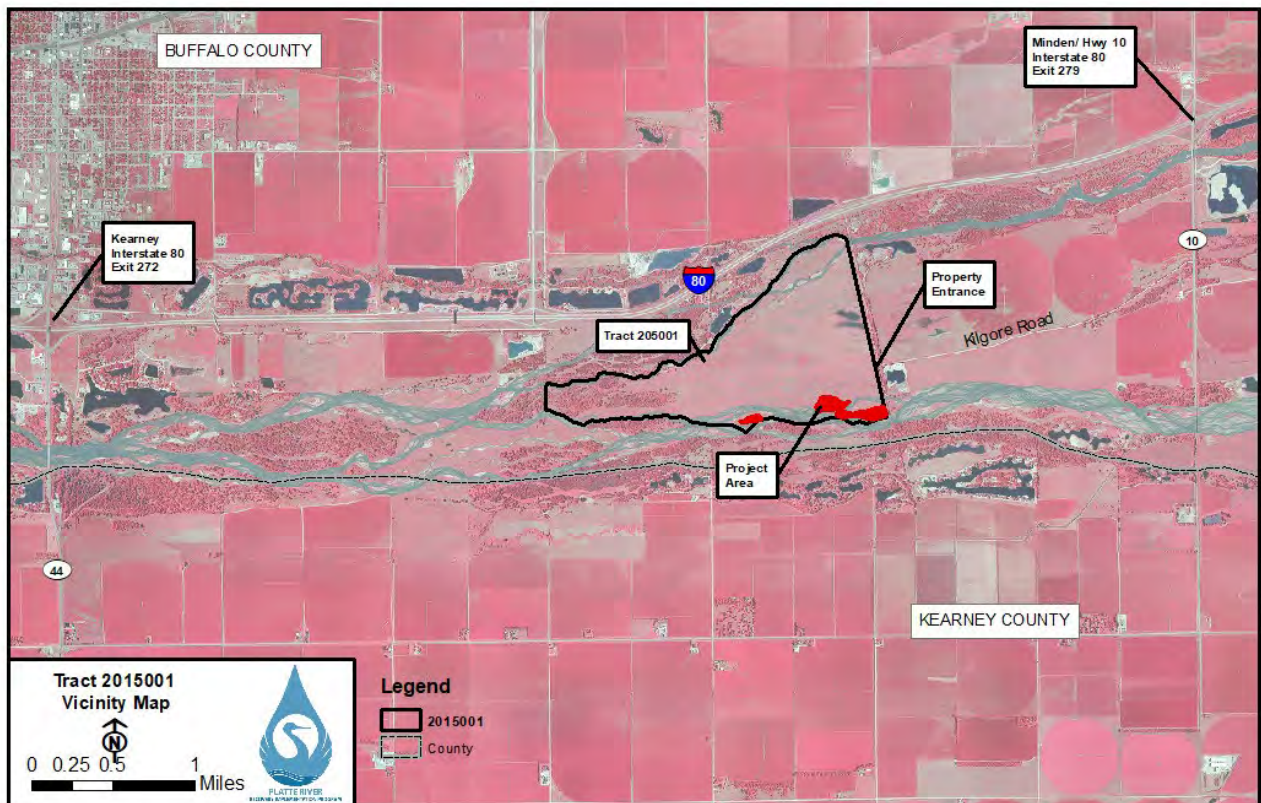
Directions to Mandatory Pre-Bid Meeting

Date and Time: Monday, July 26, 2021, at 3:00 PM CT

Location: Tract 2015001

Map:

Directions from Exit 279:



Turn west on Kilgore Road (1 mile south of I-80). Travel west on Kilgore Road 2 miles to Property Entrance.



THIS QUOTE SUBMITTED ON DATE: _____

Item No.	Description	Unit	Estimated Quantity	Bid Unit Price	Bid Price
001	Mobilization and Demobilization	LS	1	\$ N/A	\$
002	Island 1-Tree/ Brush Removal	AC	2	\$	\$
003	Island 2-Tree/ Brush Removal	AC	7.5	\$	\$
004	Island 3-Tree/ Brush Removal	AC	8	\$	\$
005	Tree Pile Removal/ Burn & Bury	LS	1	\$ N/A	\$
TOTAL					\$

PROJECT DURATION:

The Contractor, under this agreement, shall commence this work as soon as possible upon receipt of NOTICE TO PROCEED (anticipated around August 15, 2021). **If work is done during the period of October 9 and November 15 contractor must adhere to the “Whooping Crane Incidental Take Avoidance Procedures” or shut down completely during this time period.** Work should be completed as soon as possible, but no later than January 15, 2022.

TOTAL QUOTE PRICE _____

_____ dollars (\$))

WORK COMPLETION DATE: _____

Submitted by: _____

(Company)

(Individual – Print)

(Sign/Date)



**PLATTE RIVER RECOVERY IMPLEMENTATION PROGRAM
Whooping Crane Incidental Take Avoidance Procedures**

1. Between the dates of March 6 and April 29, or October 9 and November 15, the CONTRACTOR will not begin work within 0.25 miles of the Platte River channel until one of the following requirements has been met each day: 1) The CONTRACTOR observes the airplane conducting whooping crane surveys during their daily flights over the work area without circling back to verify a whooping crane sighting; 2) it is at least one (1) hour after sunrise and the CONTRACTOR has visually confirmed there are no whooping cranes or large white birds in the work area; or 3) the Executive Director’s Office (EDO) has confirmed the lack of whooping cranes in the work area. If the CONTRACTOR has any suspicion or question as to whether or not a whooping crane is present in the area, they will not start work until confirmation is made by the EDO or the bird(s) are observed leaving on their own accord by the CONTRACTOR who has reported the observation to the EDO and has been granted permission to begin work. *The CONTRACTOR will contact the EDO immediately by telephone any time they suspect they may have observed a whooping crane; no other contacts will be made until approved by the EDO.* The primary and secondary EDO points of contact for potential whooping crane sightings are:

PRIMARY CONTACT

Dr. Malinda Henry
 Mobile: (308) 237-5728
 Office: (308) 237-5728
henrym@headwaterscorp.com

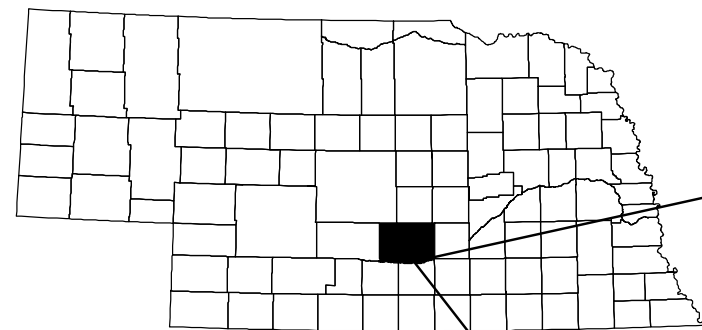
SECONDARY CONTACT

Jason Farnsworth
 Mobile: (308) 991-7602
 Office: (308) 237-5728
farnsworthj@headwaterscorp.com

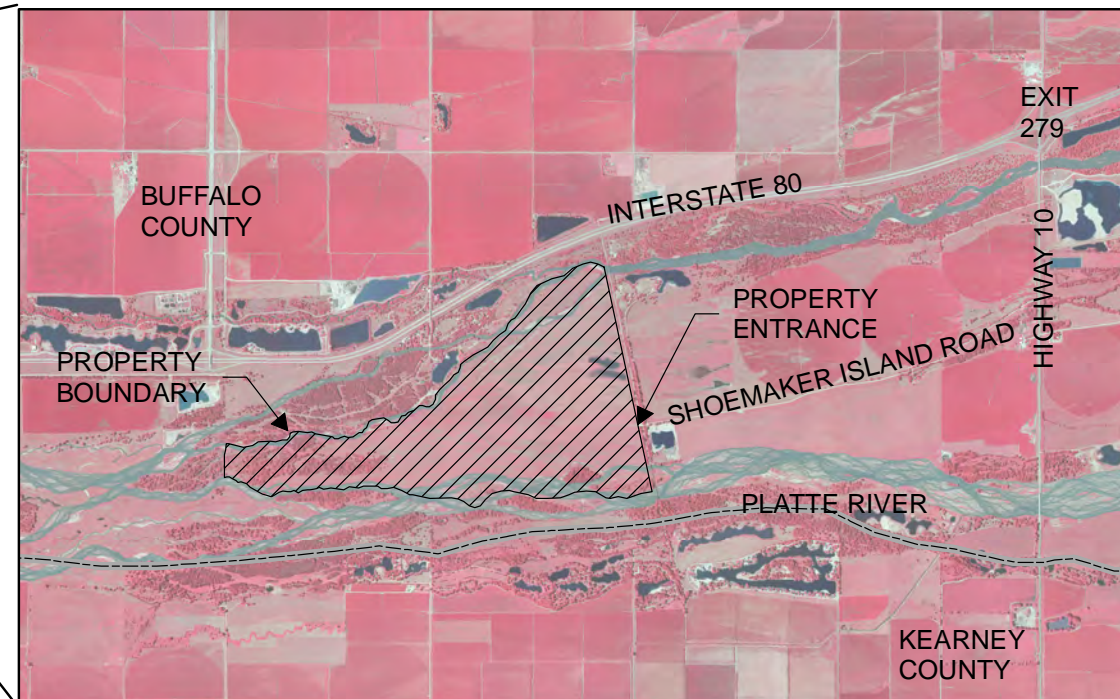
2. The PROGRAM conducts daily whooping crane surveys by flying an airplane up the river at an elevation of 750 ft. starting one-half (1/2) hour before sunrise when conditions allow. When the plane observes a white object they circle around to determine what it is. If a whooping crane is observed, they notify the EDO in order for the EDO to obtain a confirmation of the sighting from the ground. If the plane flies over the work area without circling, then there likely are not any whooping cranes in the area; however, the CONTRACTOR must visually confirm there are no whooping cranes or large white birds in the work area prior to beginning work each day. The EDO will contact the CONTRACTOR immediately by telephone if a potential whooping crane is identified within the area they are conducting work.
3. If the CONTRACTOR observes a whooping crane or what they suspect might be a whooping crane, the field crew must leave the area immediately, notify the EDO, and not return until permission has been granted by the EDO.
4. Between the dates of March 6 and April 29, or October 9 and November 15, the CONTRACTOR will end all activities within 0.25 miles of a Platte River channel two hours prior to sunset unless otherwise approved by the EDO. All equipment used by the CONTRACTOR will be parked and stored at least 0.25 miles from the nearest Platte River channel and behind a tree line when available.

ITEM	DESCRIPTION	UNITS	PRELIM QUANTS	FINAL QUANTS
001	MOBILIZATION	LS	1	
002	ISLAND 1- TREE CLEARING	AC	2	
003	ISLAND 2- TREE CLEARING	AC	7.5	
004	ISLAND 3- TREE CLEARING	AC	8	
005	BURN & BURY TREE PILES	LS	1	

PLATTE RIVER RECOVERY IMPLEMENTATION PROGRAM
2021 FT KEARNY COMPLEX
HABITAT ENHANCEMENT PROJECT
IN BUFFALO COUNTY, NE



PROJECT LOCATION



INDEX

- 1 COVER SHEET
- 2 SITE LAYOUT
- 3 INCHANNEL TREE CLEARING

CAUTION

The Platte River Recovery Implementation Program will not be responsible for, or liable for, unauthorized changes to, or uses of these plans. All changes to the plans must be in writing and must be approved by the Program.



PROJECT NO. 21-009

2021 FT. KEARNY COMPLEX
HABITAT ENHANCEMENT PROJECT

COVER SHEET

SHEET NO:

1 of 3

DATE:

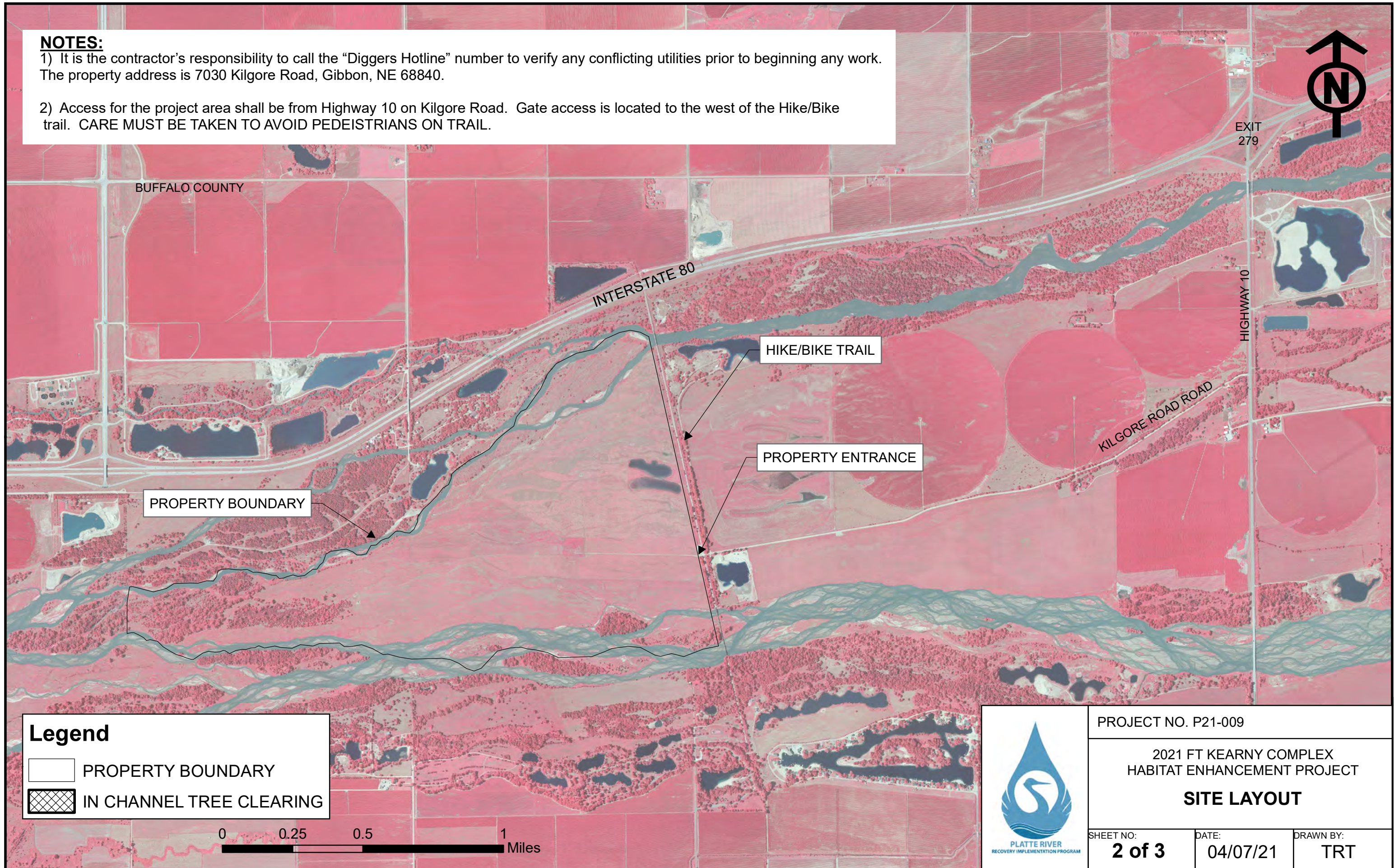
04/07/21

DRAWN BY:

TRT

NOTES:

- 1) It is the contractor's responsibility to call the "Diggers Hotline" number to verify any conflicting utilities prior to beginning any work. The property address is 7030 Kilgore Road, Gibbon, NE 68840.
- 2) Access for the project area shall be from Highway 10 on Kilgore Road. Gate access is located to the west of the Hike/Bike trail. CARE MUST BE TAKEN TO AVOID PEDESTRIANS ON TRAIL.



BUFFALO COUNTY

INTERSTATE 80

EXIT 279

HIGHWAY 10

KILGORE ROAD ROAD

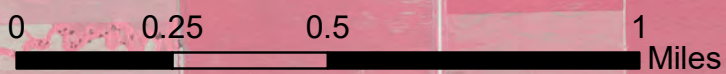
PROPERTY BOUNDARY

HIKE/BIKE TRAIL

PROPERTY ENTRANCE

Legend

- PROPERTY BOUNDARY
- IN CHANNEL TREE CLEARING



PROJECT NO. P21-009		
2021 FT KEARNY COMPLEX HABITAT ENHANCEMENT PROJECT		
SITE LAYOUT		
SHEET NO: 2 of 3	DATE: 04/07/21	DRAWN BY: TRT



HIKE/BIKE TRAIL

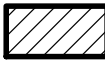

PROPERTY ENTRANCE

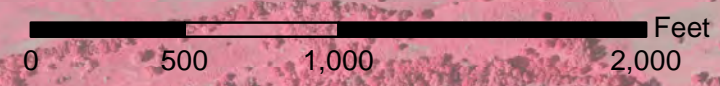
Island 3-
Clear trees & burn & bury
tree pile.(Approx 8 acres)

Island 2-
Clear trees & burn & bury
tree pile.(Approx 7.5 acres)

Island 1-
Clear trees & burn & bury
tree pile.(Approx 2 acres)

Legend

-  INCHANNEL TREE CLEARING
-  PROPERTY BOUNDARY



PROJECT NO. 21-009		
2021 FT KEARNY COMPLEX HABITAT ENHANCEMENT PROJECT		
INCHANNEL TREE CLEARING		
SHEET NO: 3 of 3	DATE: 04/07/21	DRAWN BY: TRT