



REQUEST FOR QUOTATION

PROJECT: P22-005: Tract 2018001 Livestock Water Development
LOCATION: PRRIP Tract 2018001
NEAR: Gibbon, Nebraska
REQUEST DATE: March 17, 2022
CLOSING DATE: April 1, 2022– 5:00 pm CT
CONTACT: Tim R. Tunnell, Land Coordinator
Headwaters Corporation
4111 4th Ave, Suite 6
Kearney, NE 68845
tunnellt@headwaterscorp.com

The undersigned acknowledges receipt of the following forms, plans and specifications:

- # 1 () Bid/Quotation Form
- # 2 () Attachment A – Location Map
- # 3 () Attachment B – Site Layout

PROJECT DESCRIPTION:

The contractor will be responsible for all items on the ‘Bid/Quotation Form’. The contractor may perform the work solely or may hire a subcontractor(s) for one or more of the items. In total, the contractor will be responsible for four main tasks:

1. Supply and install an electric submersible pump in existing well.
2. Install electrical service from the existing irrigation well to submersible.
3. Supply and install a 12-foot rubber tire tank with appropriate concrete apron and float switch.
4. Supply and Install Continuous Panel Livestock Exclosure

**DETAILS AND SPECIFICATIONS:**

An approximate site layout is shown in **Attachment B**. Details and necessary specifications are outlined below (quotes must include all fittings/equipment and must include all costs of whatever nature to complete the work).

Item 1 – Mobilization and Demobilization

- Lump sum unit cost must include all costs of whatever nature necessary for mobilization of all personnel, equipment and supplies to the project site associated with each bid item.

Item 2 – Supply and Install Submersible Pump

- Selected submersible pump must be able to discharge at least 20 GPM through the pipeline. Pump previously recommended to the Program was a ½ HP 20 GPM submersible pump; however, discretion will be left to the contractor to supply and install the correct pump.
- Pump Control box must be installed near the well such that the pump can be easily turned on/off. The control box must have an ‘auto’ restart feature such that the well will automatically turn on after a power loss (assuming it is on when power is lost) and have an appropriate voltage transformer.
- Lump sum unit cost must include all costs of whatever nature necessary for supplying, installing, and ensuring proper function of the submersible pump, wire from the pump’s motor to the surface, and the control box.

Item 3 – Supply and Install Buried Electrical Line

- Hookup to existing electric irrigation well with a step-down transformer and trench electrical line and conduit underground to a control box near the well. All electrical work shall meet or exceed state of NE electrical specifications.
- It is up to the contractor to supply/install the correct line type and conduit.
- Buried line must be installed to a depth sufficient not to interfere with farming and other surface activities.
- Payment will be made based on the actual amount of electrical line and conduit installed multiplied by the unit cost per linear foot supplied on the bid form. The unit cost per linear foot must include all costs of whatever nature necessary for supplying, installing, and ensuring proper function of the buried electrical line.

Item 4 – Supply and Install a 12-foot Rubber Tire Tank

- It is estimated that at least 2 hours of labor and 2 CY of concrete will be necessary, although discretion will be left to the contractor to install an appropriate amount of



concrete. The discharge end of the pipe shall be fitted with appropriate float and switch at tank.

Lump sum unit cost must include all costs of whatever nature necessary for supplying, installing, and ensuring proper function of the tire tank, with concrete apron and float switch.

Item 5 – Supply and Install Continuous Panel Livestock Enclosure

- Construct an enclosure around the well, discharge pipe with float and solar unit in a manner that it will protect from livestock while allowing livestock access to rubber tire tank. Enclosure is to be installed with creosote posts and metal continuous panel cut to size.

At the conclusion of the work, Contractor shall demonstrate that the facilities are fully functional by running well for not less than 30 minutes in the Owner’s presence.

TIMING:

Please fill out the following bid page if you are interested in submitting a quote. Quotes must be submitted by email (scanned) to Tim Tunnell (contact information listed above) by **5pm CT on Friday, April 1, 2022**. It is desired that work be completed by **May 1, 2022, or sooner**.



Bid/Quotation Form-P22-005 Tract 2018001 Livestock Water Development

Item No	Description	Unit	Estimated Quantity	Unit Bid Price	Bid Price
1	Mobilization and Demobilization	LS	1	n/a	\$
2	Supply and Install Submersible Pump	LS	1	n/a	\$
3	Supply and Install Electrical Line	LF	~760	\$	\$
4	Supply and Install 12-foot Rubber Tire Tank	LS	1	n/a	\$
5	Supply and Install Continuous Panel Cattle Exclosure	LS	1	n/a	\$
				TOTAL	\$

TOTAL QUOTE: _____

WORK DATES: _____

SUBMITTED BY: _____

(Company)

(Individual)

(Sign/Date)

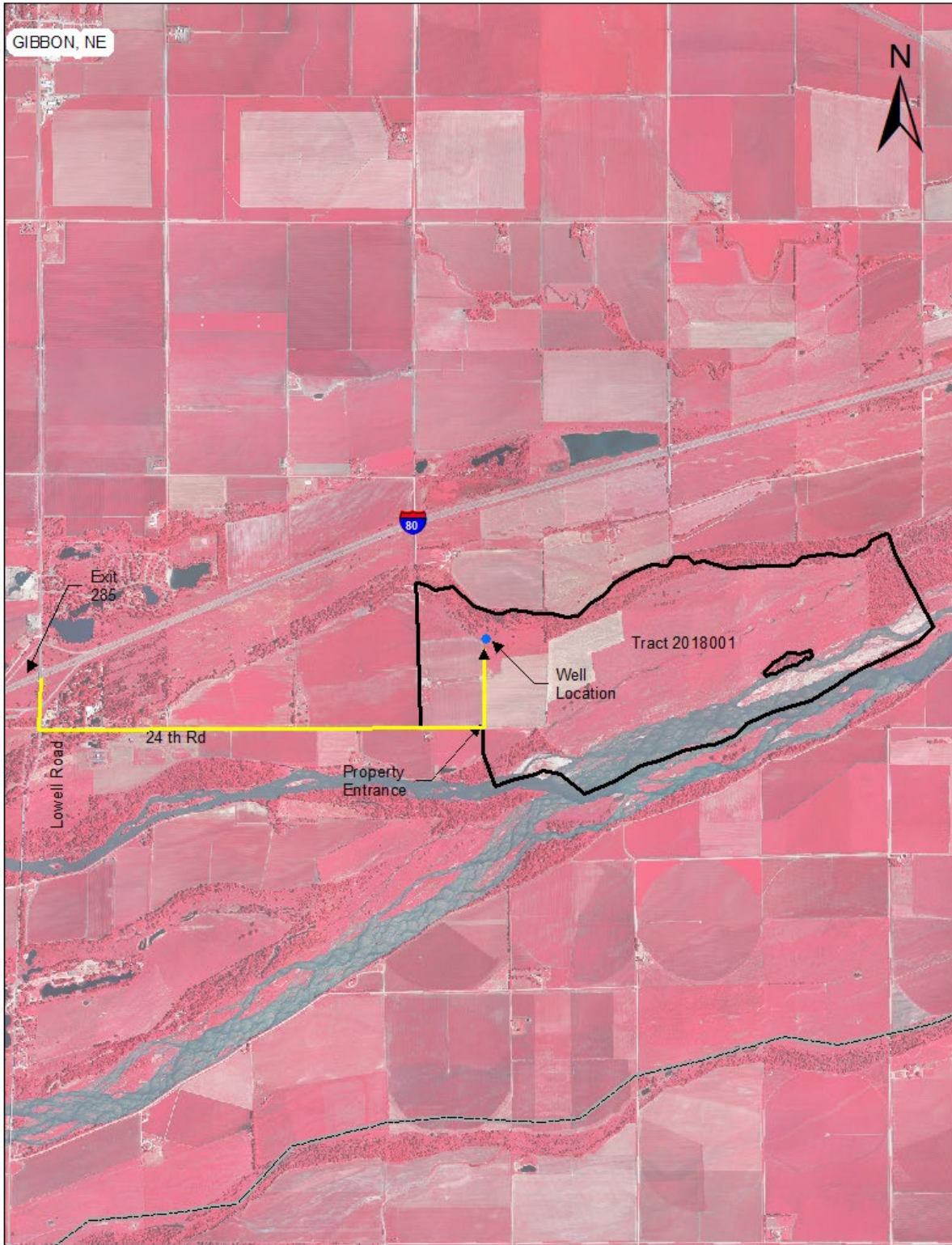


Please list the names and phone numbers of any sub-contractors that will be used and include the item number (from the bid table) they will be used for:

--



ATTACHMENT A:





ATTACHMENT B:

