



## REQUEST FOR QUOTATION

**PROJECT:** (P22-017) Tract 2015001 Burn & Bury Tree Piles  
**LOCATION:** PRRIF Property 2015001  
**NEAR:** Kearney, Nebraska  
**REQUEST DATE:** July 15, 2022  
**MANDATORY SITE**  
**SHOWING:** July 29, 2022 – 3:00 pm central  
**CLOSING DATE:** August 8, 2022 – 5:00 pm central  
**START OF PROJECT:** August 15, 2021  
**POINT OF CONTACT:** Tim R. Tunnell, Land Coordinator  
Headwaters Corporation  
4111 4<sup>th</sup> Ave, Suite 6  
Kearney, NE 68845  
tunnellt@headwaterscorp.com

The undersigned acknowledges receipt of the following plans and specifications:

- # 1 (  ) Whooping Crane Incidental Take Avoidance Procedures
- # 2 (  ) Sheet 1 - Cover
- # 3 (  ) Sheet 2 – Layout
- # 4 (  ) Sheet 3 – In channel Tree Piles

### PROJECT DESCRIPTION:

The contractor will be responsible for burning and burying tree piles as identified on sheet 3. Trees and brushed were cleared and placed in piles during the late summer of 2021. Contractor is responsible for obtaining appropriate burn permit and to call the “Diggers Hotline” number to verify any conflicting utilities prior to beginning any work.

The undersigned, having examined the drawings and investigated the local conditions affecting the project work, hereby proposes to perform the project in accordance with the contract documents for the following rates:



THIS QUOTE SUBMITTED ON DATE: \_\_\_\_\_

Item No.	Description	Unit	Estimated Quantity	Bid Unit Price	Bid Price
001	Mobilization and Demobilization	LS	1	\$ N/A	\$ _____
002	Tree Pile Burn & Bury	LS	1	\$ N/A	\$ _____
TOTAL					\$ _____

PROJECT DURATION:

The Contractor, under this agreement, shall commence this work as soon as possible upon receipt of NOTICE TO PROCEED (anticipated around August 15, 2022). **If work is done during the period of October 9 and November 15 contractor must adhere to the “Whooping Crane Incidental Take Avoidance Procedures” or shut down completely during this time period.** Work should be completed as soon as possible, but no later than January 15, 2023.

TOTAL QUOTE PRICE \_\_\_\_\_

\_\_\_\_\_ dollars (\$ \_\_\_\_\_ )

WORK COMPLETION DATE: \_\_\_\_\_

Submitted by: \_\_\_\_\_

(Company)

\_\_\_\_\_  
(Individual – Print)

\_\_\_\_\_  
(Sign/Date)



**PLATTE RIVER RECOVERY IMPLEMENTATION PROGRAM  
Whooping Crane Incidental Take Avoidance Procedures**

1. Between the dates of March 6 and April 29, or October 9 and November 15, the CONTRACTOR will not begin work within 0.25 miles of the Platte River channel until one of the following requirements has been met each day: 1) The CONTRACTOR observes the airplane conducting whooping crane surveys during their daily flights over the work area without circling back to verify a whooping crane sighting; 2) it is at least one (1) hour after sunrise and the CONTRACTOR has visually confirmed there are no whooping cranes or large white birds in the work area; or 3) the Executive Director’s Office (EDO) has confirmed the lack of whooping cranes in the work area. If the CONTRACTOR has any suspicion or question as to whether or not a whooping crane is present in the area, they will not start work until confirmation is made by the EDO or the bird(s) are observed leaving on their own accord by the CONTRACTOR who has reported the observation to the EDO and has been granted permission to begin work. *The CONTRACTOR will contact the EDO immediately by telephone any time they suspect they may have observed a whooping crane; no other contacts will be made until approved by the EDO.* The primary and secondary EDO points of contact for potential whooping crane sightings are:

**PRIMARY CONTACT**

Dr. Malinda Henry  
 Mobile: (308) 237-5728  
 Office: (308) 237-5728  
[henrym@headwaterscorp.com](mailto:henrym@headwaterscorp.com)

**SECONDARY CONTACT**

Jason Farnsworth  
 Mobile: (308) 991-7602  
 Office: (308) 237-5728  
[farnsworthj@headwaterscorp.com](mailto:farnsworthj@headwaterscorp.com)

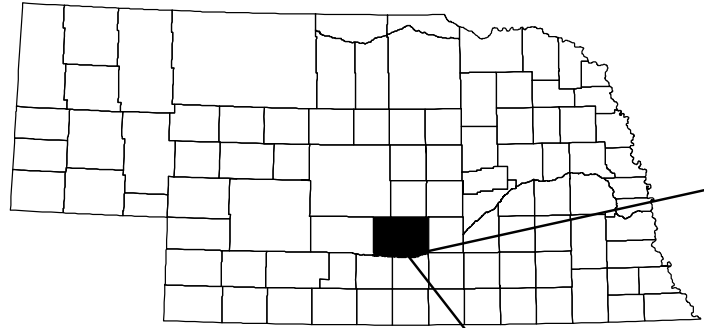
2. The PROGRAM conducts daily whooping crane surveys by flying an airplane up the river at an elevation of 750 ft. starting one-half (1/2) hour before sunrise when conditions allow. When the plane observes a white object they circle around to determine what it is. If a whooping crane is observed, they notify the EDO in order for the EDO to obtain a confirmation of the sighting from the ground. If the plane flies over the work area without circling, then there likely are not any whooping cranes in the area; however, the CONTRACTOR must visually confirm there are no whooping cranes or large white birds in the work area prior to beginning work each day. The EDO will contact the CONTRACTOR immediately by telephone if a potential whooping crane is identified within the area they are conducting work.
3. If the CONTRACTOR observes a whooping crane or what they suspect might be a whooping crane, the field crew must leave the area immediately, notify the EDO, and not return until permission has been granted by the EDO.
4. Between the dates of March 6 and April 29, or October 9 and November 15, the CONTRACTOR will end all activities within 0.25 miles of a Platte River channel two hours prior to sunset unless otherwise approved by the EDO. All equipment used by the CONTRACTOR will be parked and stored at least 0.25 miles from the nearest Platte River channel and behind a tree line when available.

ITEM	DESCRIPTION	UNITS	PRELIM QUANTS	FINAL QUANTS
001	MOBILIZATION	LS	1	
002	BURN & BURY TREE PILES	LS	1	

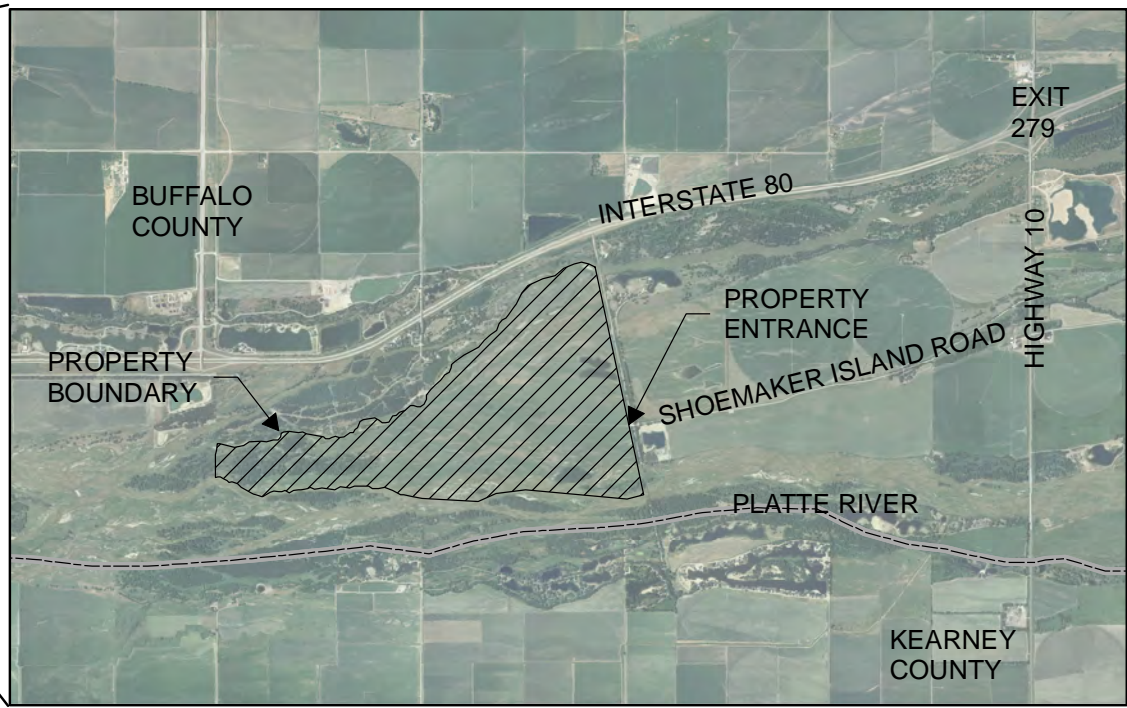
**PLATTE RIVER RECOVERY IMPLEMENTATION PROGRAM**

**TRACT 2015001 BURN & BURY TREE PILES**

**IN BUFFALO COUNTY, NE**



**PROJECT LOCATION**



**INDEX**

- 1 COVER SHEET
- 2 SITE LAYOUT
- 3 INCHANNEL PILE BURNING

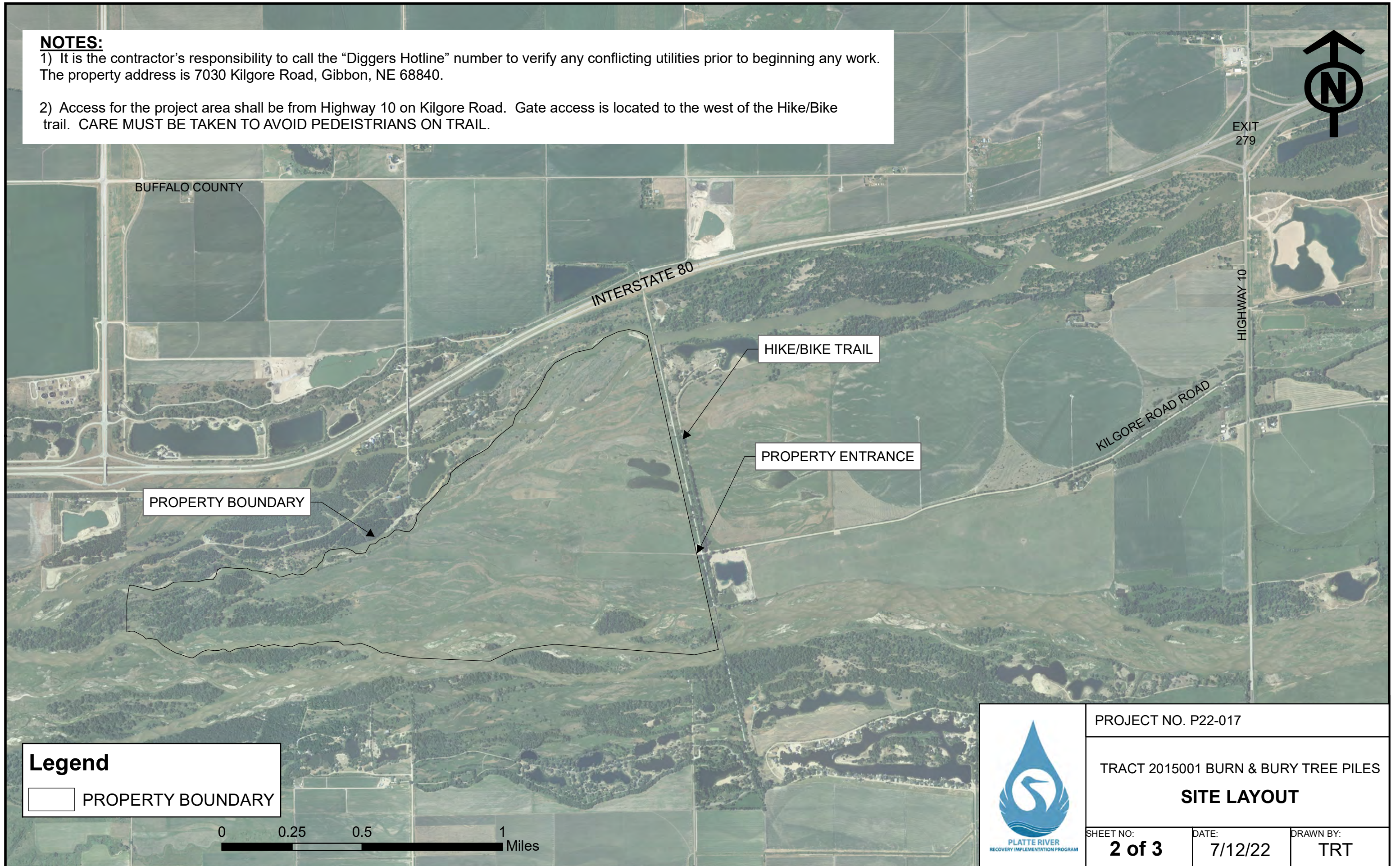
**CAUTION**  
 The Platte River Recovery Implementation Program will not be responsible for, or liable for, unauthorized changes to, or uses of these plans. All changes to the plans must be in writing and must be approved by the Program.




PROJECT NO. 22-017		
TRACT 2015001 BURN & BURY TREE PILES		
<b>COVER SHEET</b>		
SHEET NO: <b>1 of 3</b>	DATE: 7/12/22	DRAWN BY: TRT

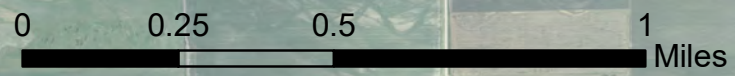
**NOTES:**

- 1) It is the contractor's responsibility to call the "Diggers Hotline" number to verify any conflicting utilities prior to beginning any work. The property address is 7030 Kilgore Road, Gibbon, NE 68840.
- 2) Access for the project area shall be from Highway 10 on Kilgore Road. Gate access is located to the west of the Hike/Bike trail. CARE MUST BE TAKEN TO AVOID PEDESTRIANS ON TRAIL.



**Legend**

 PROPERTY BOUNDARY



PROJECT NO. P22-017		
TRACT 2015001 BURN & BURY TREE PILES		
<b>SITE LAYOUT</b>		
SHEET NO: <b>2 of 3</b>	DATE: 7/12/22	DRAWN BY: TRT



HIKE/BIKE TRAIL

PROPERTY ENTRANCE

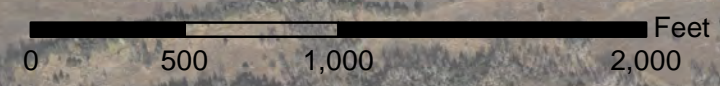
Island 3-  
Burn & bury  
tree piles.(7 piles)

Island 2-  
Burn & bury  
tree piles.(11 piles)

Island 1-  
Burn & Bury  
tree piles.(2 piles)

**Legend**

 PROPERTY BOUNDARY



PROJECT NO. 22-017		
TRACT 2015001 BURN & BURY TREE PILES <b>INCHANNEL TREE PILE BURN &amp; BURY</b>		
SHEET NO: <b>3 of 3</b>	DATE: 7/12/22	DRAWN BY: TRT