

## REQUEST FOR QUOTATION

**PROJECT:** P23-004: Babb Airboat Ramp Construction

**LOCATION:** Babb Tract

**NEAR:** Grand Island, Nebraska

**CONTACT:** Ed Weschler, [Weschlere@HeadwatersCorp.com](mailto:Weschlere@HeadwatersCorp.com)  
720.524.6115 (Ext. 103)

### ATTACHMENT(S):

#1 Location Map, Project Layout & Typical Details

### PROJECT DESCRIPTION:

The contractor will be responsible for constructing an airboat ramp and privacy berm using approximately 230 cubic yards of material. The contractor will be responsible for seeding the finished project. The contractor may use any machinery necessary to complete the project. An engineer or staff member from the Platte River Recovery Implementation Program (Program) Executive Director's Office (EDO) will stake the site. See the attached plan sheets for details.

General notes, specifications and project information are provided below.

- The ramp will have a bottom width of 14' and sides sloped at 3:1 (H:V). The ramp will be track compacted and finished with at least 3" of mudrock (~14 CY)
- The cut from the ramp will be spoiled into the privacy berm. It will be approximately 4' tall, with a top width of 6' and side slopes of 3:1.
- All disturbed areas (berm, side slopes of ramp, etc.) should be seeded with a native prairie mix. Example native seed mix is below or an approved equal. Assume 0.1 acre of seed will be needed. Broadcast seeding is ok. Apply at minimum 16 lbs/acre.

Upland Mix: Native Mix #1 by Miller Seed Company or an approved equal.

Common Name	LBS PLS per Acre
Big Bluestem	2.0
Indiangrass	1.5
Little Bluestem	1.5
Sideoats Grama	1.5
Western Wheatgrass	1.0
Switchgrass	0.5

- All other activities of whatever nature (e.g., mobilization, clearing/grubbing grass, etc.) necessary to complete the work are incidental to the total quote amount, and should be built into total quote.

**TIMING & SELECTION:**

If you wish to submit a quote, please fill out the following page and send a scanned copy to the email address at the top of page 1. Quotes must be received by 12:00pm CT on Tuesday, April 4<sup>th</sup>, 2023.

Notice to proceed is expected April 10<sup>th</sup>. It is desired that the work be largely completed before Friday, April 28<sup>th</sup>, 2023.

There will be no required site visit.

**DIRECTIONS TO SITE:**

Approximately 5 miles East of Grand Island, near the intersection of 5th Rd & B Rd.

Coordinates: 40°56'40.8"N 98°12'22.7"W

**P23-004: Quote Form**

**Please identify the machinery that will be used and your estimate as to how long it will take to complete the project (in days):**

--

**Please fill out the 'Unit Bid Price' and 'Bid Price' values below:**

<b>Item No</b>	<b>Description</b>	<b>Unit</b>	<b>Bid Price</b>
1	Earthwork	LS	
2	Seeding	LS	
3	Mudrock Cover	LS	

**TOTAL QUOTE PRICE:** \_\_\_\_\_

**WORK DATE(S):** \_\_\_\_\_

**SUBMITTED BY:** \_\_\_\_\_

(Company)

(Individual – Print)

(Sign/Date)



**PLATTE RIVER RECOVERY IMPLEMENTATION PROGRAM  
Whooping Crane Incidental Take Avoidance Procedures**

1. Between the dates of March 6 and April 29, or October 9 and November 15, the CONTRACTOR will not begin work within 0.25 miles of the Platte River channel until one of the following requirements has been met each day: 1) The CONTRACTOR observes the airplane conducting whooping crane surveys during their daily flights over the work area without circling back to verify a whooping crane sighting; 2) it is at least one (1) hour after sunrise and the CONTRACTOR has visually confirmed there are no whooping cranes or large white birds in the work area; or 3) the Executive Director’s Office (EDO) has confirmed the lack of whooping cranes in the work area. If the CONTRACTOR has any suspicion or question as to whether or not a whooping crane is present in the area, they will not start work until confirmation is made by the EDO or the bird(s) are observed leaving on their own accord by the CONTRACTOR who has reported the observation to the EDO and has been granted permission to begin work. *The CONTRACTOR will contact the EDO immediately by telephone any time they suspect they may have observed a whooping crane; no other contacts will be made until approved by the EDO.* The primary and secondary EDO points of contact for potential whooping crane sightings are:

**PRIMARY CONTACT**

Dr. Malinda Henry  
 Mobile: (308) 237-5728  
 Office: (308) 237-5728  
[henrym@headwaterscorp.com](mailto:henrym@headwaterscorp.com)

**SECONDARY CONTACT**

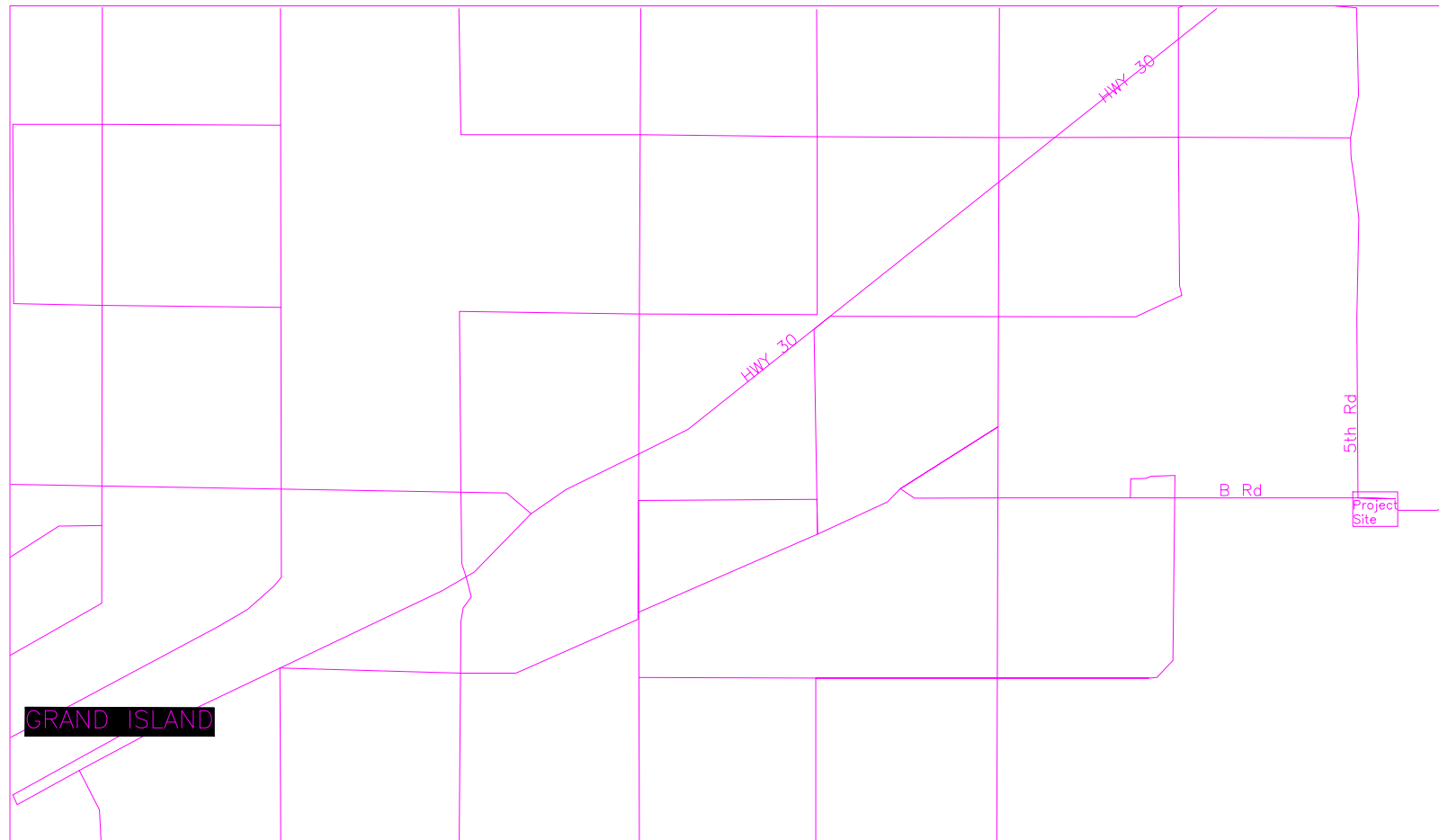
Jason Farnsworth  
 Mobile: (308) 991-7602  
 Office: (308) 237-5728  
[farnsworthj@headwaterscorp.com](mailto:farnsworthj@headwaterscorp.com)

2. The PROGRAM conducts daily whooping crane surveys by flying an airplane up the river at an elevation of 750 ft. starting one-half (1/2) hour before sunrise when conditions allow. When the plane observes a white object they circle around to determine what it is. If a whooping crane is observed, they notify the EDO in order for the EDO to obtain a confirmation of the sighting from the ground. If the plane flies over the work area without circling, then there likely are not any whooping cranes in the area; however, the CONTRACTOR must visually confirm there are no whooping cranes or large white birds in the work area prior to beginning work each day. The EDO will contact the CONTRACTOR immediately by telephone if a potential whooping crane is identified within the area they are conducting work.
3. If the CONTRACTOR observes a whooping crane or what they suspect might be a whooping crane, the field crew must leave the area immediately, notify the EDO, and not return until permission has been granted by the EDO.
4. Between the dates of March 6 and April 29, or October 9 and November 15, the CONTRACTOR will end all activities within 0.25 miles of a Platte River channel two hours prior to sunset unless otherwise approved by the EDO. All equipment used by the CONTRACTOR will be parked and stored at least 0.25 miles from the nearest Platte River channel and behind a tree line when available.



# PLATTE RIVER RECOVERY IMPLEMENTATION PROGRAM

## Babb Tract Airboat Ramp



MARK	DESCRIPTION	DATE

EMW DESIGNED	EMW DRAWN	JB CHECKED	APPROVED
FEB 2023	MAR 2023	MAR 2023	

**Headwaters CORPORATION**  
 4111 4th Avenue, Suite 6  
 Kearney, NE 68845  
 (P) 308-237-5726  
 (F) 308-237-4651

BABB TRACT AIRBOAT RAMP  
 COVER SHEET, PROJECT VICINITY  
 AND LOCATION  
 GRAND ISLAND, NEBRASKA



PROJECT NO.  
P23-04

SHEET IDENTIFICATION:  
**G-01**

FINAL DESIGN

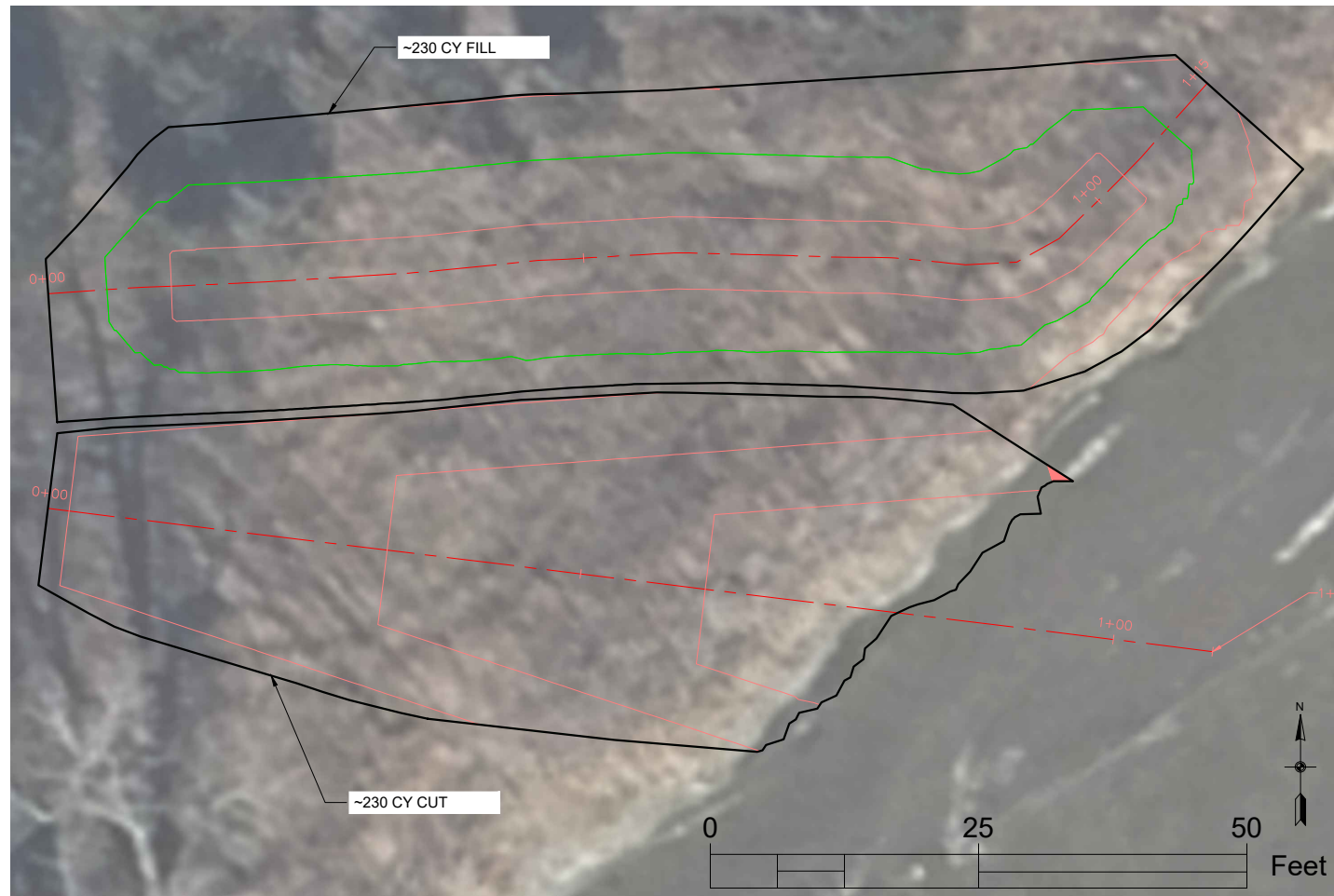
SHT NO. 01 OF 04

NOTE: CONTRACTOR IS RESPONSIBLE FOR LOCATING BURIED UTILITIES. CONTACT DIGGERS HOTLINE (1-800-331-5666) PRIOR TO ANY EXCAVATION.

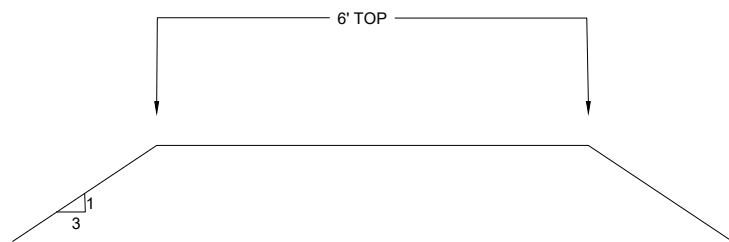




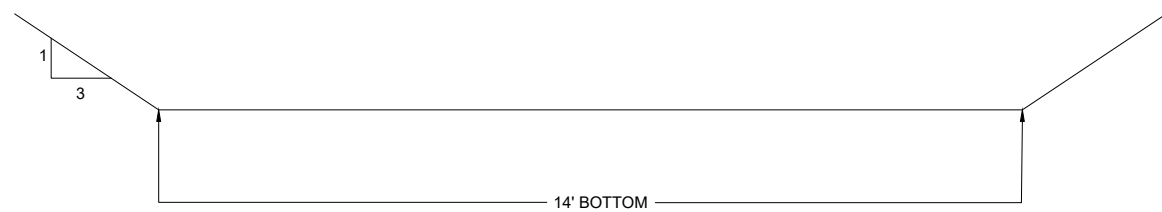




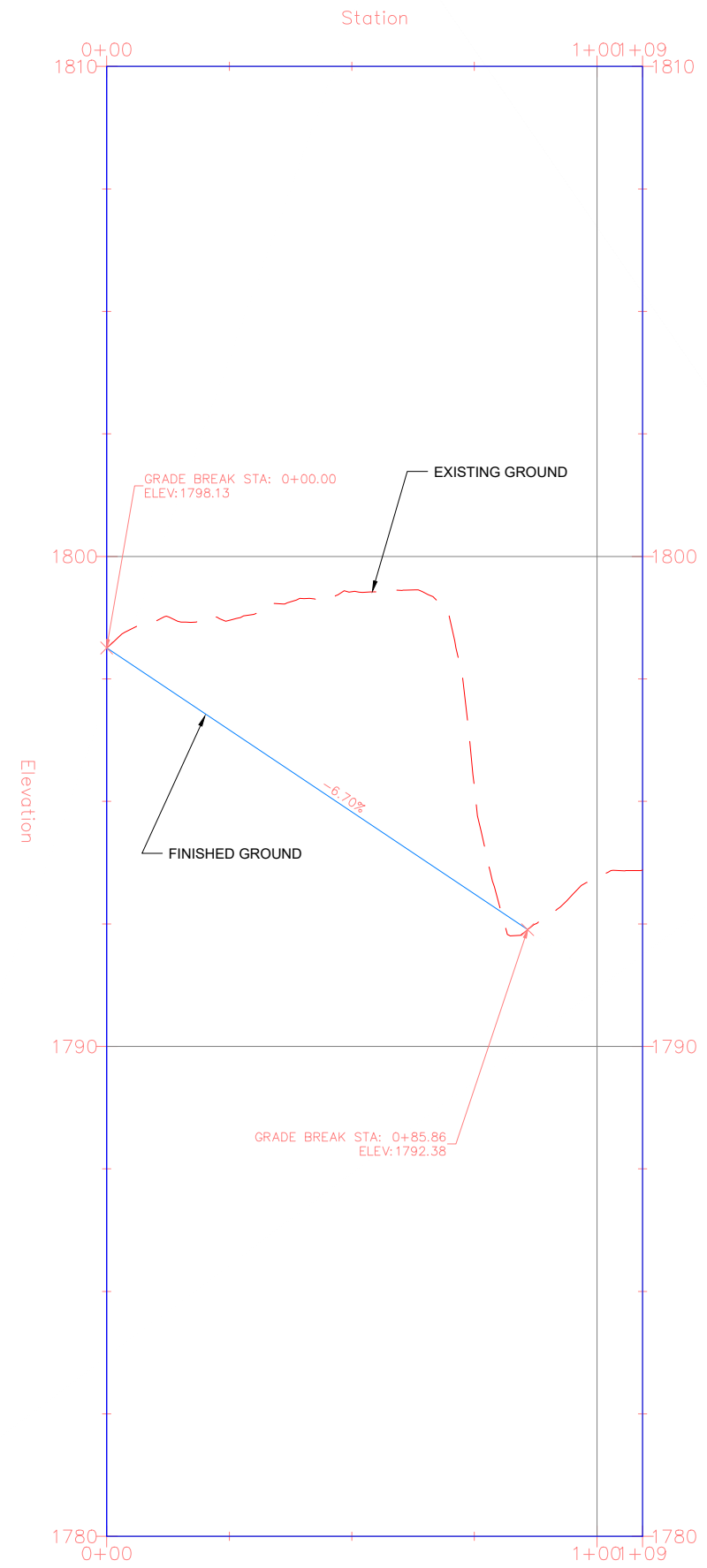
## SPOIL BERM CROSS SECTION



## RAMP CROSS SECTION



## Babb Ramp Alignment PROFILE



FINAL DESIGN

DATE	MARK DESCRIPTION	EMW DESIGNED	EMW DRAWN	JB CHECKED	APPROVED
		FEB 2023	MAR 2023	MAR 2023	

<p>Headwaters CORPORATION 4111 4th Avenue, Suite 6 Kearney, NE 68845 (P) 308-237-5728 (F) 308-237-4651</p>	<p>BABB TRACT AIRBOAT RAMP EXCAVATION PLAN AND PROFILE</p>	<p>GRAND ISLAND, NEBRASKA</p>
--	--	-------------------------------

PROJECT NO. P23-04	SHEET IDENTIFICATION: C-01
SHT NO. 04 OF 04	