

REQUEST FOR QUOTATION

PROJECT: P23-012 Meyer Bridge Replacement
LOCATION: Meyer Farm & Homestead
NEAR: Grand Island, Nebraska
CONTACT: Ed Weschler, Weschlere@HeadwatersCorp.com
720.524.6115 (Ext. 103)

ATTACHMENT(S):

#1 Location Map, Project Layout & Typical Details

PROJECT DESCRIPTION:

The contractor will be responsible for demolishing and removing the existing bridge and replacing it with a culvert crossing. The crossing will require approximately 80 cubic yards of fill material borrowed on site, 5 cubic yards of mudrock delivered for deck and approach cover, and a 36"x40' round-equivalent elliptical culvert. An engineer or staff member from the Platter River Recovery Implementation Program (Program) Executive Director's Office (EDO) will stake the borrow area and set control points if requested. See the attached plan sheets for details.

General notes, specifications and project information are provided below.

- The existing bridge spans 36' and has a deck width of 10'. It is constructed with steel C-channel and I-beams anchored by concrete footings. The bridge must be demolished and disposed off-site.
- The culvert crossing will span approximately 36', with a top width of 12' and side slopes of 2:1.
- Culvert must be an Elliptical Arched Culvert with a 36" Round-Equivalent
- All other activities of whatever nature (e.g., mobilization, clearing/grubbing grass, etc.) necessary to complete the work are incidental to the total quote amount, and should be built into total quote.

TIMING & SELECTION:

If you wish to submit a quote, please fill out the following page and send a scanned copy to the email address at the top of page 1. Quotes must be received by 12:00pm CT on Friday, October 20th, 2023.

Notice to proceed is expected Monday, November 20th, 2023. It is desired that the work be largely completed before Friday, December 15th, 2023.

An optional site visit will be held on October 12th at 1:00pm CT, meeting at homestead. The site visit is not mandatory to submit a bid. Additional pictures of bridge to removed are attached.

DIRECTIONS TO SITE:

From Highway 30 east of Grand Island:

- Head south on North Gunbarrel Rd for 1.2 miles.
- Turn left onto A Rd, continue east for 2.4 miles.
- The property entrance will be on the right.
- Head south on property entrance road to reach homestead.
- The bridge site is south of homestead, across cow pasture.

Coordinates: 40°55'16.9"N 98°14'00.2"W

P23-004: Quote Form

Please identify the machinery that will be used and your estimate as to how long it will take to complete the project (in days):

--

Please fill out the 'Unit Bid Price' and 'Bid Price' values below:

Item No	Description	Unit	Bid Price
1	Bridge Removal	LS	
2	Earthwork	LS	
3	Mudrock Deck Cover	LS	
4	40' Culvert	LS	

TOTAL QUOTE PRICE: _____

WORK DATE(S): _____

SUBMITTED BY: _____

(Company)

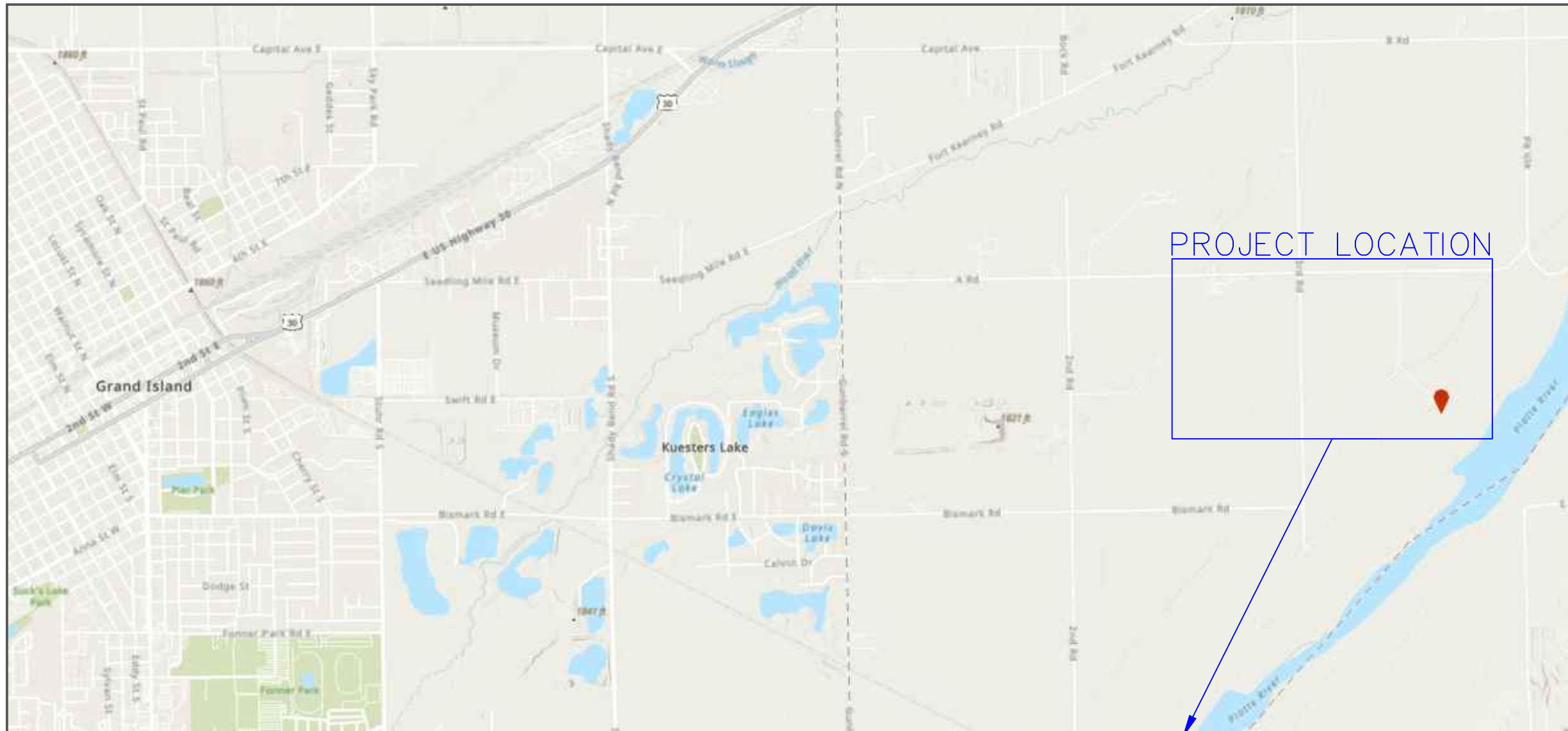
(Individual – Print)

(Sign/Date)

Bridge to be Removed



Sheet Size: 11x17 ANS I B 1 Inch =



405 Urban Street
Suite 401
Lakewood, CO 80226
www.headwaterscorp.com



Platte River Recovery Implementation Program

Meyer Property Bridge Replacement

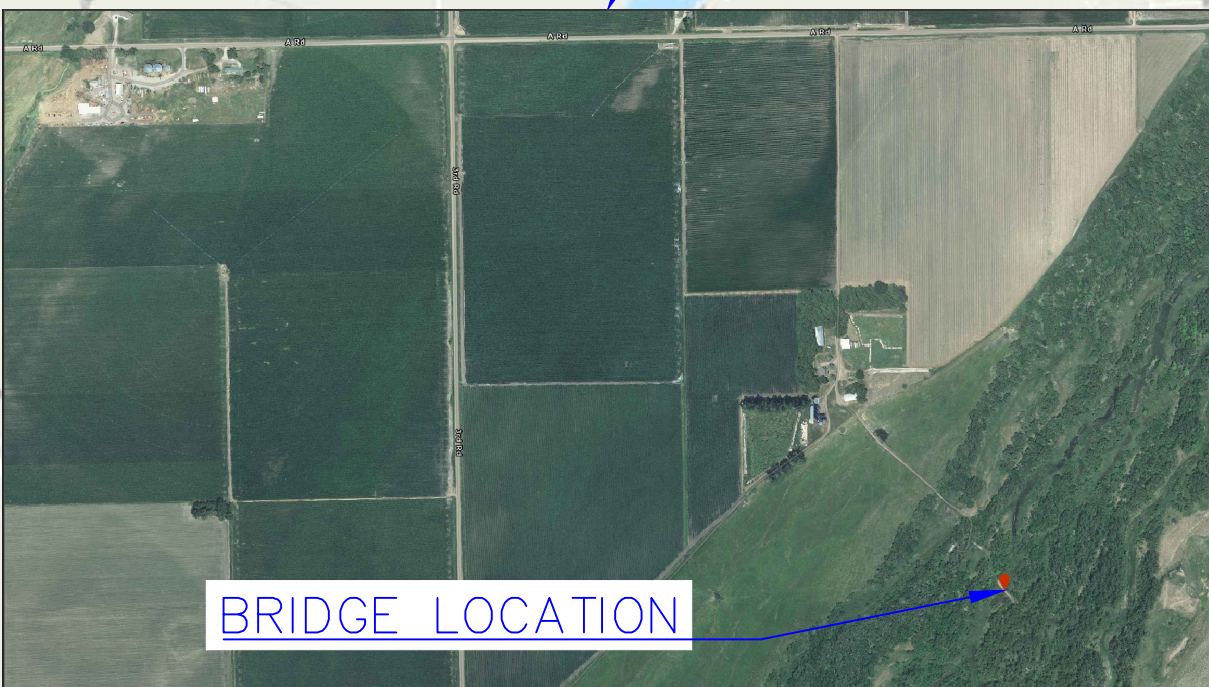
40°55'16.9"N 98°14'00.2"W
Grand Island, NE 68801



www.platteriverprogram.org



EXISTING BRIDGE
(TO BE REMOVED)



BRIDGE LOCATION

JDB	9/26/23	Check Date
EMW	8/24/23	Design Date
Mark	Date	Description
Checked by:	JDB	
Drawn by:	EMW	
Project number:	P23-012	

TITLE SHEET



405 Urban Street
Suite 401
Lakewood, CO 80226
www.headwaterscorp.com



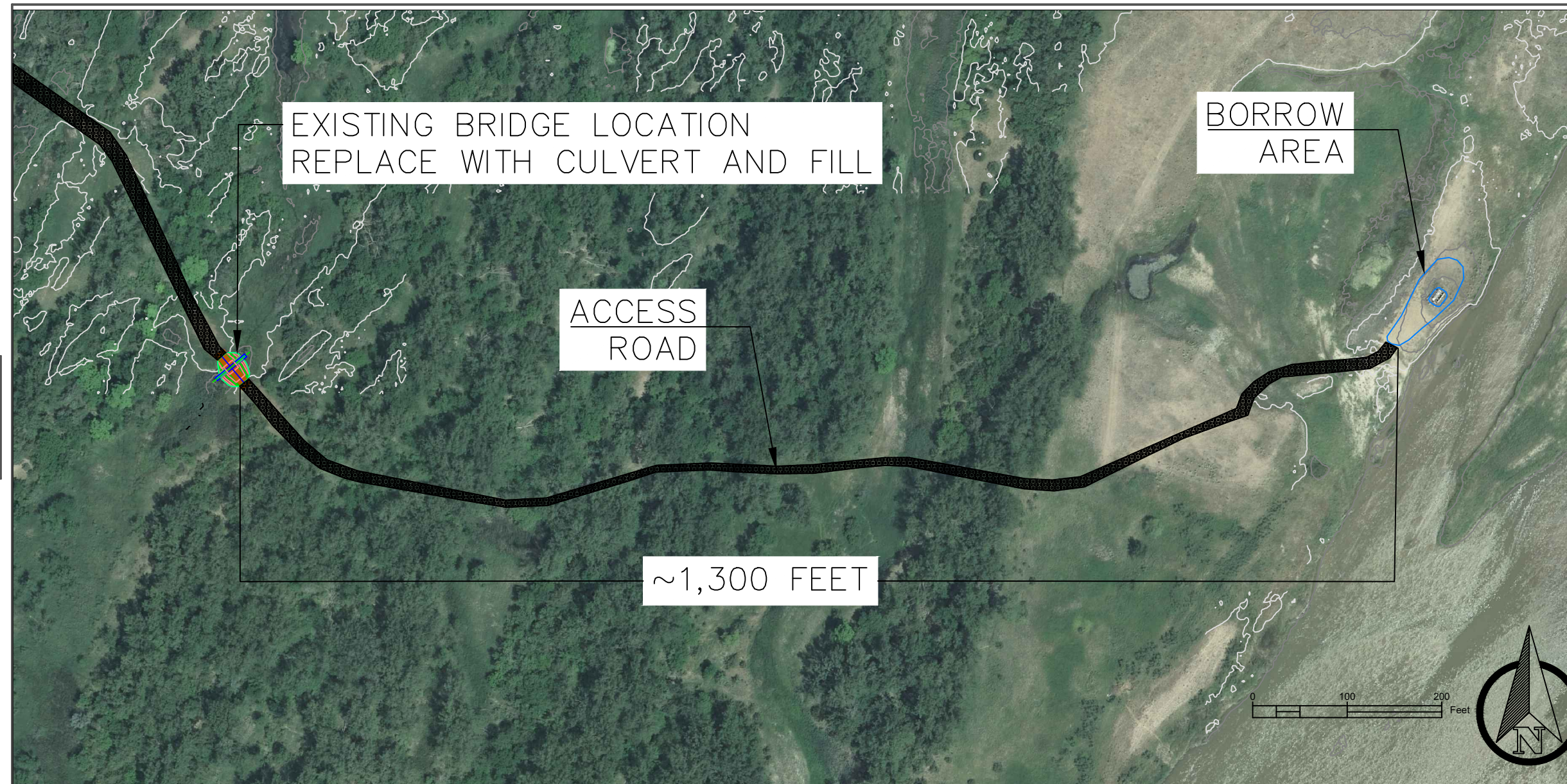
**Platte River Recovery
Implementation
Program**

**Meyer Property
Bridge Replacement**

40°55'16.9"N 98°14'00.2"W
Grand Island, NE 68801



PLATTE RIVER
RECOVERY IMPLEMENTATION PROGRAM
www.platteriverprogram.org

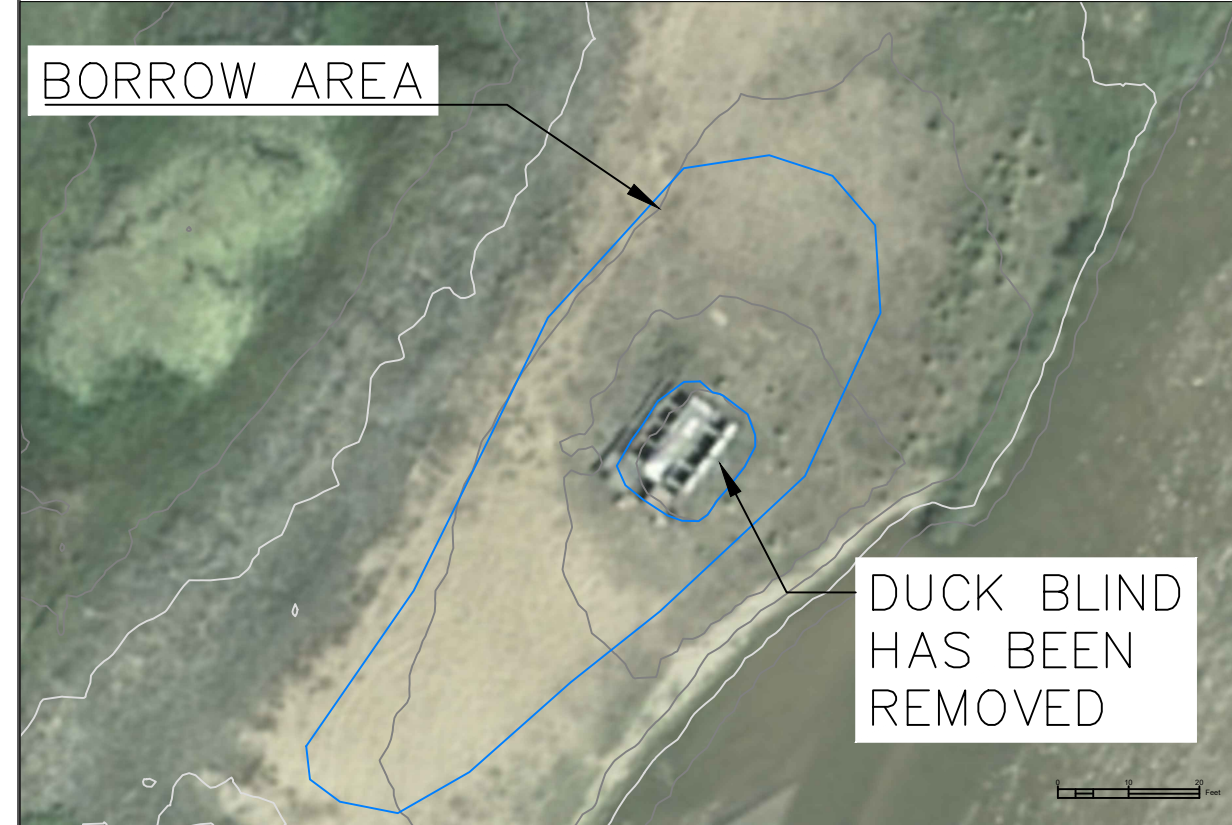
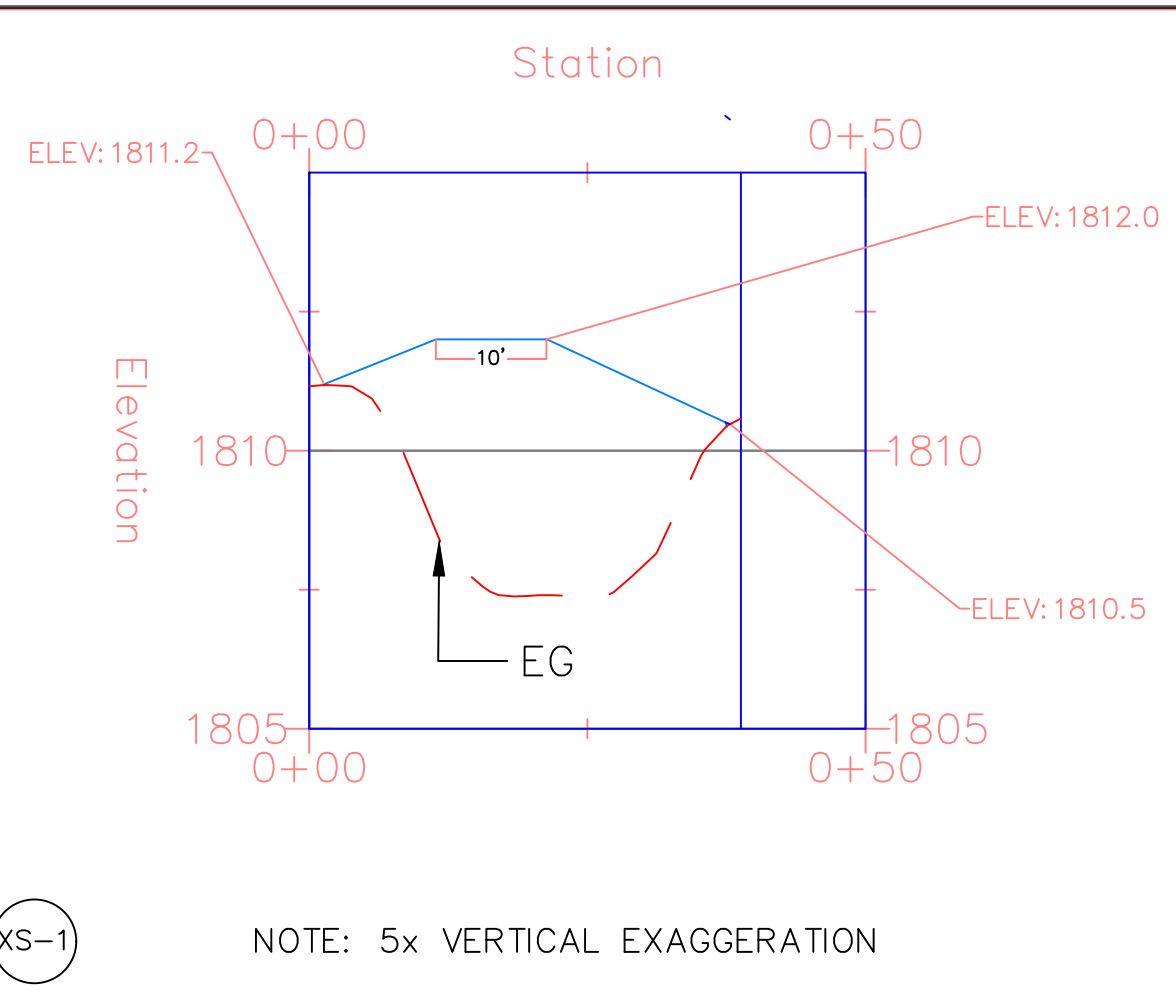
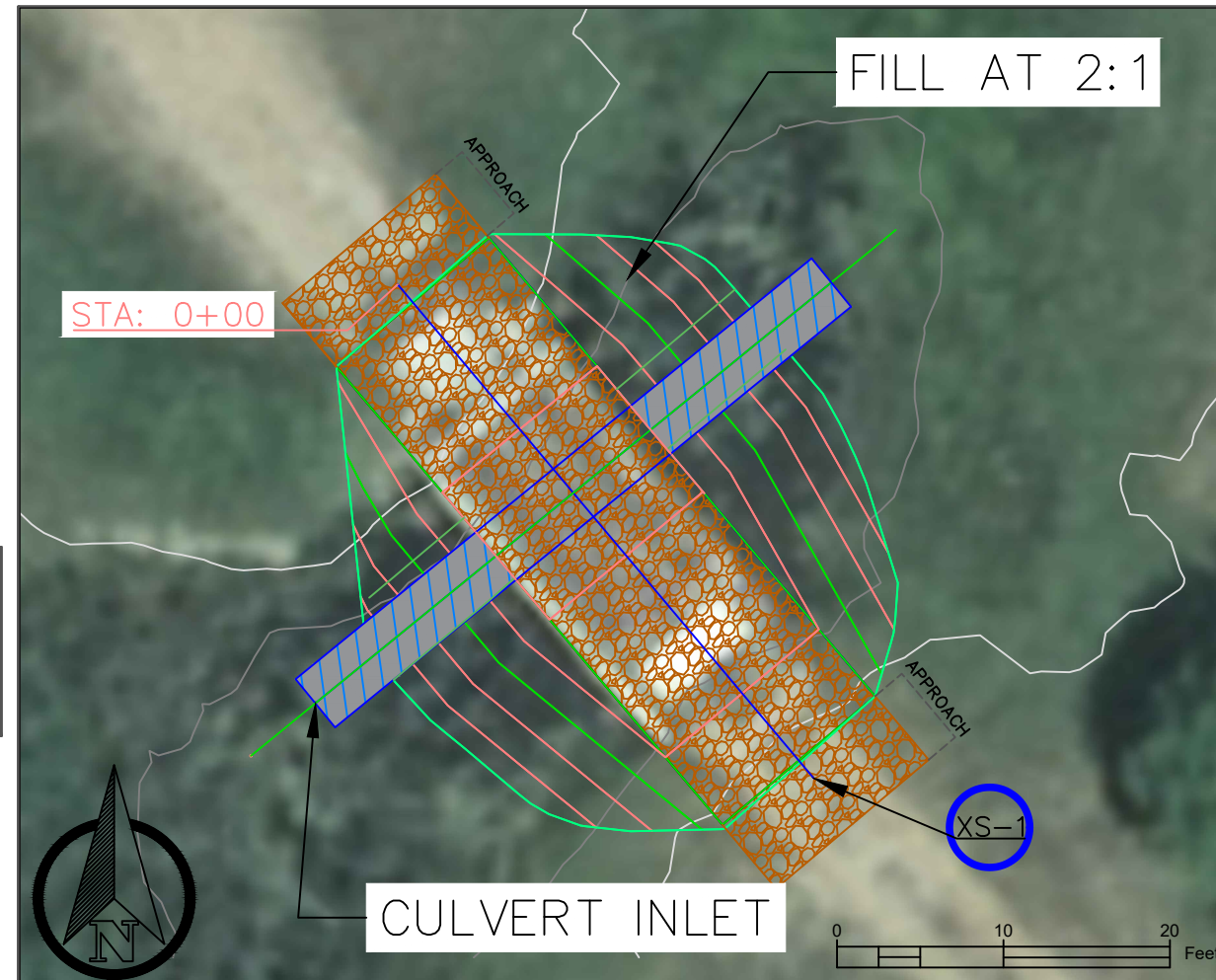


Sheet Size: 11x17 ANS/B 1 Inch =

- REMOVE AND DISPOSE OF EXISTING BRIDGE AND FOOTINGS (36'X10' STEEL, CONCRETE)
- REPLACE WITH COVERED CULVERT CROSSING
- APPROXIMATELY 80 YARDS OF FILL REQUIRED
- BORROW FILL MATERIAL ON SITE
- COVER CROSSING DECK AND APPROACHES WITH 3"-THICK LAYER MUDROCK (~5 CY)
- 36"x40' ROUND-EQUIVALENT CULVERT REQUIRED (SEE DETAIL ON PG. 5)
- ELEVATION CONTROL POINT AND STAKES CAN BE SET IF REQUESTED

JDB	9/26/23	Check Date
EMW	8/24/23	Design Date
Mark	Date	Description
Checked by:	JDB	
Drawn by:	EMW	
Project number:	P23-012	

SITE PLAN



- CULVERT CROSSING SPANS ~36'
- CROSSING DECK WIDTH = 12'
- LINE DECK AND 5' OF EACH APPROACH WITH 3" LAYER OF MUDROCK (~5 CY)
- TOP OF DECK MUST BE 10' LONG, CENTERED OVER CULVERT, AT AN ELEVATION OF 1812.0'
- TIE SIDE SLOPES INTO EG AT 2:1
- APPROXIMATELY 80 CUBIC YARDS OF FILL REQUIRED
- SHALLOW BORROW FROM SITE SHOWN (1' CUT IN SHOWN PERIMETER WILL NET ~100 CUBIC YARDS)
- SMOOTH AND GRADE BORROW SITE INTO SURROUNDING GROUND



405 Urban Street
Suite 401
Lakewood, CO 80226
www.headwaterscorp.com



Platte River Recovery Implementation Program

Meyer Property Bridge Replacement

40°55'16.9"N 98°14'00.2"W
Grand Island, NE 68801



JDB	9/26/23	Check Date
EMW	8/24/23	Design Date
Mark	Date	Description
Checked by:	JDB	
Drawn by:	EMW	
Project number:	P23-012	

GRADING PLAN



405 Urban Street
Suite 401
Lakewood, CO 80226
www.headwaterscorp.com



**Platte River Recovery
Implementation
Program**

**Meyer Property
Bridge Replacement**

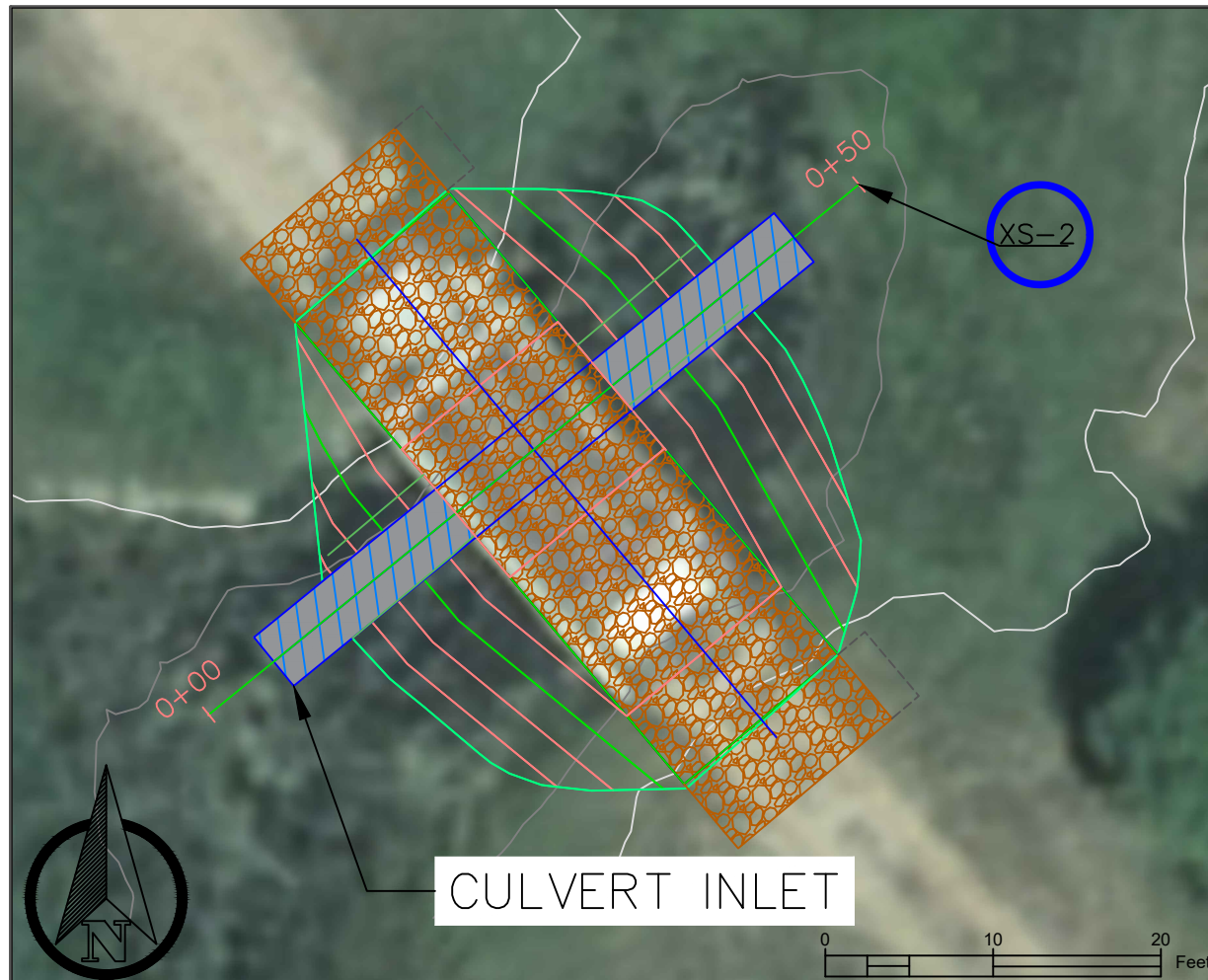
40°55'16.9"N 98°14'00.2"W
Grand Island, NE 68801



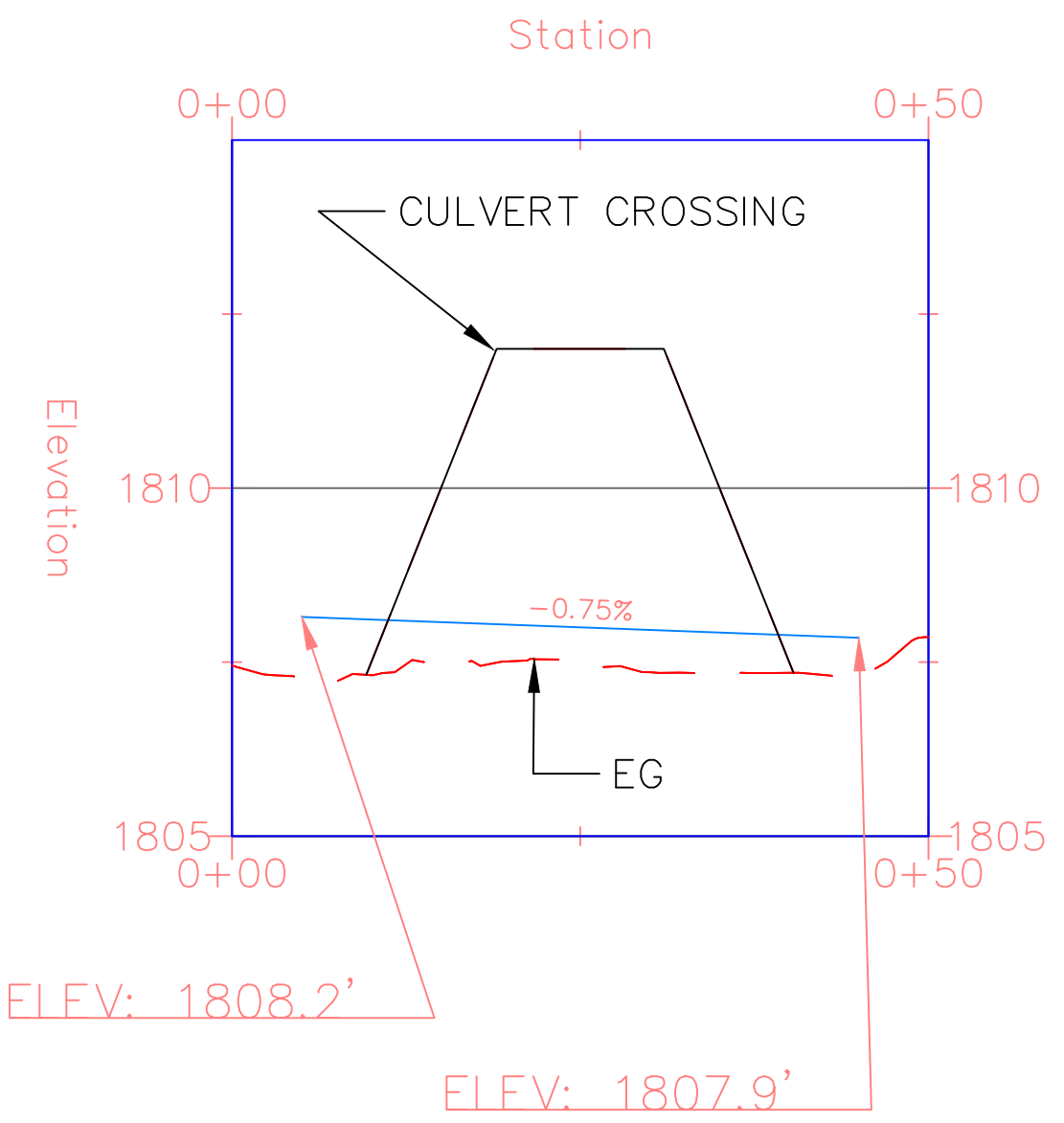
PLATTE RIVER
RECOVERY IMPLEMENTATION PROGRAM
www.platteriverprogram.org

JDB	9/26/23	Check Date
EMW	8/24/23	Design Date
Mark	Date	Description
Checked by:	JDB	
Drawn by:	EMW	
Project number:	P23-012	

CULVERT INSTALL



Culvert Alignment PROFILE



XS-2

NOTE: 5X VERTICAL EXAGGERATION

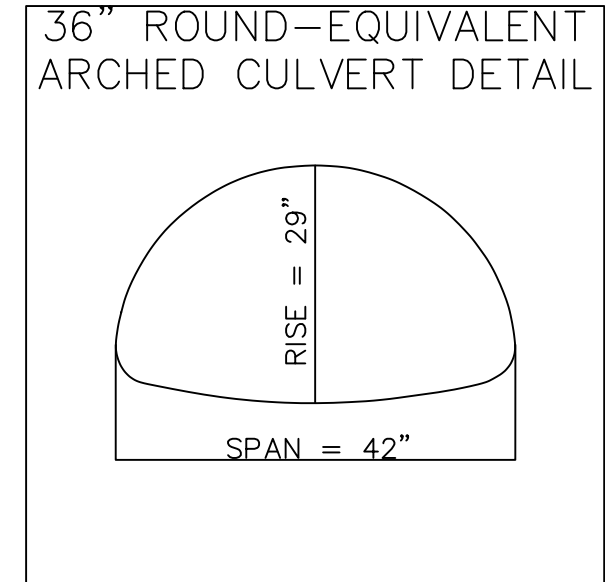
Sheet Size: 11x17 ANSIB 1 Inch =

- INSTALL CULVERT IN LOWEST PART OF CHANNEL, PERPENDICULAR TO CROSSING (SEE DETAIL ON PAGE 5)
- 40' CULVERT
- TARGET INLET ELEVATION = 1808.2'
- TARGET OUTLET ELEVATION = 1807.9'
- NOTE: INLET/OUTLET ELEVATIONS MAY NOT BE EXACT – OUTLET MUST BE 0.3' LOWER THAN INLET REGARDLESS OF ELEVATION

Sheet Size: 11x17 ANSI B 1 Inch =

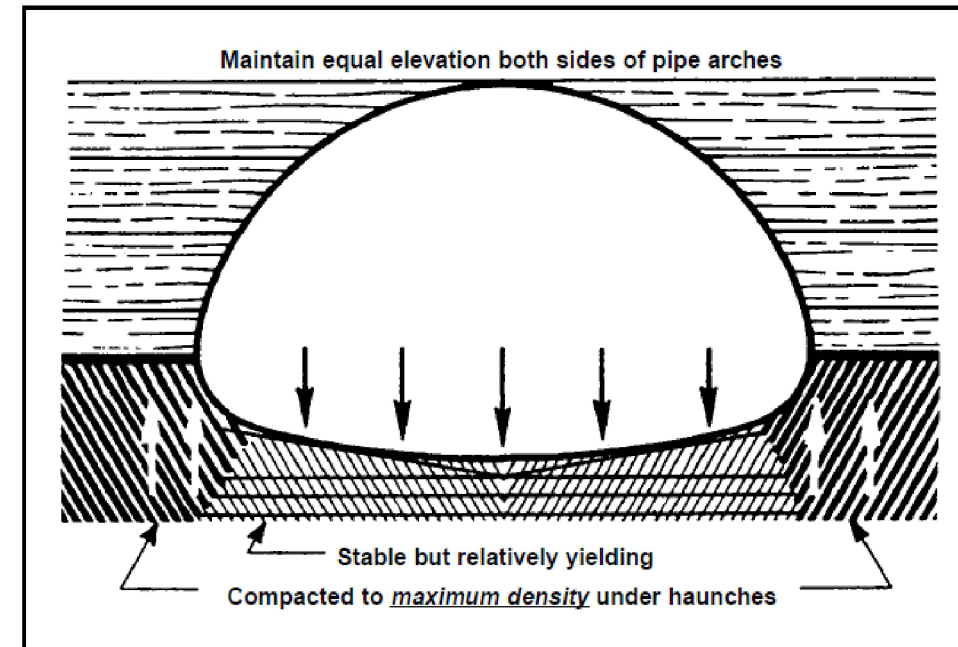
CULVERT SPECS:

- 40' LONG
- 36" ROUND-EQUIVALENT ARCHED CORRUGATED STEEL CULVERT
- 29" RISE
- 42" SPAN
- MIN GAGE: 12
- OK TO CONNECT SMALLER SECTIONS WITH BANDS TO MEET 40' (IF NECESSARY)



CULVERT INSTALL NOTES:

- FILL MATERIAL MUST BE FREE FROM ROCKS AND EARTH CLOUDS >3"
- LIGHTLY COMPACT BEDDING UNDER CULVERT
- BACKFILL CULVERT IN 6-8 INCH LIFTS, COMPACTING BETWEEN LIFTS
- HAND COMPACT UNDER CULVERT HAUNCHES WITH HAND TAMP OR 2X4
- MACHINE COMPACT OK ELSEWHERE
- FILL UNDER CULVERT PROJECTIONS FROM CROSSING (~6' ON BOTH SIDES)



405 Urban Street
Suite 401
Lakewood, CO 80226
www.headwaterscorp.com



**Platte River Recovery
Implementation
Program**

**Meyer Property
Bridge Replacement**

40°55'16.9"N 98°14'00.2"W
Grand Island, NE 68801



PLATTE RIVER
RECOVERY IMPLEMENTATION PROGRAM
www.platteriverprogram.org

JDB	9/26/23	Check Date
EMW	8/24/23	Design Date
Mark	Date	Description
Checked by:	JDB	
Drawn by:	EMW	
Project number:	P23-012	

**CULVERT DETAIL
& NOTES**