



## REQUEST FOR QUOTATION

**PROJECT:** P23-014: In-Channel Disking  
**LOCATION:** Pawnee, Ft Kearny, Gibbon-Shelton, Clark Island and Chapman  
Habitat Complexes  
**NEAR:** Kearney, NE  
**REQUEST DATE:** August 8, 2023  
**CLOSING DATE:** **August 23, 2023 – 5:00 pm CST**  
**START OF PROJECT:** **August 28, 2023**  
**POINT OF CONTACT:** Tim R. Tunnell, Land Coordinator  
Headwaters Corporation  
4111 4<sup>th</sup> Ave, Suite 6  
Kearney, NE 68845  
[tunnellt@headwaterscorp.com](mailto:tunnellt@headwaterscorp.com)

The undersigned acknowledges receipt of the following plans and specifications:

- # 1 (  ) Whooping Crane Incidental Take Avoidance Procedures
- # 2 (  ) Construction Specifications
- # 3 (  ) Sheet 1 - Cover
- # 4 (  ) Sheet 2 – Site Layout
- # 5 (  ) Sheet 3 – Pawnee Complex
- # 6 (  ) Sheet 4 – Ft Kearny Complex
- # 7 (  ) Sheet 5 – Minden-Gibbon Complex
- # 8 (  ) Sheet 6 – Clark Island Complex
- # 9 (  ) Sheet 7 – Chapman Complex



**NOTE: Mobilization price is requested as a lump sum per complex disked. Payment will be made on actual complexes mobilized to and disked by each contractor. Disking price requested are hourly rates for equipment and operators. Payment will be made on actual hours worked.**

Item No.	Description	Unit	Estimated Quantity	Bid Unit Price
1	Mobilization/Demobilization Pawnee Complex	LS	1	\$_____
2	Mobilization/Demobilization Fort Kearny Complex	LS	1	\$_____
3	Mobilization/Demobilization Minden-Gibbon Complex	LS	1	\$_____
4	Mobilization/Demobilization Clark Island Complex	LS	1	\$_____
5	Mobilization/Demobilization Chapman Complex	LS	1	\$_____
6	In-channel Disking (10 ft disk)	Hour	====	\$_____
7	In-channel Disking (16 ft disk)	Hour	====	\$_____
8	In-channel Mowing	Hour	====	\$_____



**PROJECT DURATION:**

The Contractor, under this agreement, shall commence this work within 10 calendar days of the date of NOTICE TO PROCEED (anticipated around **August 28, 2023**). *If work is done during the period of October 9 and November 15 contractor must adhere to the “Whooping Crane Incidental Take Avoidance Procedures” or shut down completely during this time period.* Work should be completed within 60 days.

**WORK COMPLETION DATE:** \_\_\_\_\_ N/A \_\_\_\_\_

Submitted by: \_\_\_\_\_

\_\_\_\_\_  
(Company)

\_\_\_\_\_  
(Individual – Print)

\_\_\_\_\_  
(Sign/Date)



**PLATTE RIVER RECOVERY IMPLEMENTATION PROGRAM  
Whooping Crane Incidental Take Avoidance Procedures**

1. Between the dates of March 6 and April 29, or October 9 and November 15, the CONTRACTOR will not begin work within 0.25 miles of the Platte River channel until one of the following requirements has been met each day: 1) The CONTRACTOR observes the airplane conducting whooping crane surveys during their daily flights over the work area without circling back to verify a whooping crane sighting; 2) it is at least one (1) hour after sunrise and the CONTRACTOR has visually confirmed there are no whooping cranes or large white birds in the work area; or 3) the Executive Director’s Office (EDO) has confirmed the lack of whooping cranes in the work area. If the CONTRACTOR has any suspicion or question as to whether or not a whooping crane is present in the area, they will not start work until confirmation is made by the EDO or the bird(s) are observed leaving on their own accord by the CONTRACTOR who has reported the observation to the EDO and has been granted permission to begin work. *The CONTRACTOR will contact the EDO immediately by telephone any time they suspect they may have observed a whooping crane; no other contacts will be made until approved by the EDO.* The primary and secondary EDO points of contact for potential whooping crane sightings are:

**PRIMARY CONTACT**

Dr. Malinda Henry  
 Mobile: (308) 455-0694  
 Office: (308) 237-5728  
[henrym@headwaterscorp.com](mailto:henrym@headwaterscorp.com)

**SECONDARY CONTACT**

Jason Farnsworth  
 Mobile: (308) 991-7602  
 Office: (308) 237-5728  
[farnsworthj@headwaterscorp.com](mailto:farnsworthj@headwaterscorp.com)

2. The PROGRAM conducts daily whooping crane surveys by flying an airplane up the river at an elevation of 750 ft. starting one-half (1/2) hour before sunrise when conditions allow. When the plane observes a white object, they circle around to determine what it is. If a whooping crane is observed, they notify the EDO in order for the EDO to obtain a confirmation of the sighting from the ground. If the plane flies over the work area without circling, then there likely are not any whooping cranes in the area; however, the CONTRACTOR must visually confirm there are no whooping cranes or large white birds in the work area prior to beginning work each day. The EDO will contact the CONTRACTOR immediately by telephone if a potential whooping crane is identified within the area they are conducting work.
3. If the CONTRACTOR observes a whooping crane or what they suspect might be a whooping crane, the field crew must leave the area immediately, notify the EDO, and not return until permission has been granted by the EDO.



4. Between the dates of March 6 and April 29, or October 9 and November 15, the CONTRACTOR will end all activities within 0.25 miles of a Platte River channel two hours prior to sunset unless otherwise approved by the EDO. All equipment used by the CONTRACTOR will be parked and stored at least 0.25 miles from the nearest Platte River channel and behind a tree line when available.



**CONSTRUCTION AND MATERIAL SPECIFICATIONS**

for

**P23-014 In-Channel Disking**

**The work to be performed under these specifications consists of:**

Activities in this project include diskings within the channel of the Platte River at the habitat complex identified on Sheet 5-9. Target areas are heavily vegetated islands and sand bars. **Payment will be made on actual hours worked, which may be more or less than the estimate.**

The work shall be performed in accordance with the drawings and specifications unless otherwise approved, in writing, by the Program’s Project Engineer. For items of work requiring Program inspection and/or approval, it is the responsibility of the contractor to keep the Project Engineer informed on the status of the work so that timely inspection may be provided. Work performed without the Program being provided the opportunity for inspection may not be accepted. All work on the project will conform to the title drawings and the following applicable specifications are marked in Column No. 1.

COL. #1	SPEC. NO.	SPECIFICATION TITLE
X	CS-01	Mobilization and Demobilization
X	CS-04	In-Channel Disking



## CONSTRUCTION SPECIFICATION CS-01

### MOBILIZATION AND DEMOBILIZATION

#### 1. Description.

The work shall consist of the mobilization and demobilization of the Contractor's forces and the equipment necessary for performing the work required under the Contract. Mobilization will not be considered as work in fulfilling the contract requirement for commencement of work.

#### 2. Equipment & Materials.

**2.1** Mobilization shall include all activities and costs for transportation of personnel, equipment and supplies/materials to the site, establishment of offices, buildings, and other necessary facilities for the Contractor's operations at the site.

**2.2** Demobilization shall include all activities and costs for transportation of personnel, equipment and supplies/materials not used in the Contract, including the disassembly, removal and site cleanup of any offices, buildings or other facilities assembled on the site for the Contract.

**2.3** This work includes mobilization and demobilization required by the Contract at the time of award. If additional mobilization/demobilization is required during the performance of the Contract due to changed, deleted or added items of work, for which the Contractor is entitled to an adjustment in the Contract price, compensation for such costs will be included in the price adjustment for the item or items of work changed or added.

**2.3** The Contractor shall be responsible for all required permits for transportation of the Contractor's equipment. All equipment and materials shall be mobilized and demobilized in accordance with all local, state, and federal laws related to transportation and safety.

**2.4** Upon completion of the work, the Contractor shall restore all access areas to the same condition as prior to the start of the work.

**2.5** The Contractor is responsible for security of the Contractor's equipment while on site.



### **3. Measurement and Method of Payment**

**3.1** Payment shall be made as the work proceeds, after presentation of invoices by the Contractor showing specific mobilization and demobilization costs, and evidence of the charges of suppliers, subcontractors, and others.

**3.2** If the total sum of such payments is less than the lump sum contract price, the unpaid balance will be included in the final contract payment. Payments for mobilization will not exceed 60% of the lump sum contract price. A minimum of 40% of the contract price will be retained until such time that demobilization is complete. Prior to signing of the contract, the Contractor shall provide the PROGRAM with a detailed Payment Schedule for costs associated with mobilization & demobilization.

**3.3** Payment of the lump sum contract price for mobilization and demobilization will constitute full compensation for the completion of the work.

**3.4** Payment will not be made under this item for the purchase costs of materials having a residual value, the purchase costs of materials to be incorporated in the project, or the purchase costs of operating supplies.





## CONSTRUCTION SPECIFICATION CS-04

### IN-CHANNEL DISKING

#### 1. Description

In Platte River habitat restoration and enhancement projects, disking may be required in the active channel of the river to remove vegetation that has become established on islands and sand bars.

#### 2. Construction

The in-channel area to be disked shall be as shown on the Project Construction Drawings. Construction shall be as shown in the plan view only.

**2.1** Unless otherwise stated, in-channel disking shall include one pass. In areas of heavy vegetation two passes will be made with the direction of the second pass oriented perpendicular to the first.

**2.2** Implement can be pull behind or 3-point mounted type but shall be able penetrate a minimum depth of 12-inches. Sufficient force must be applied through weight or hydraulics to achieve that depth.

**2.3** The Contractor shall not leave piles of vegetation and/or soil caused by balling up of material during disking. Any piles shall be leveled and smoothed.

**2.4** The Contractor, shall always, conduct their work in full compliance with all OSHA regulations and any other applicable local, state, or federal regulations.

#### 3. Special Conditions

**3.1** Any garbage, rubbish, trash, or similar items found during clearing, shall be set aside by the contractor, and disposed of in an approved solid waste facility. The PROGRAM has not identified any significant presence of such materials at the project location.

# PLATTE RIVER RECOVERY IMPLEMENTATION PROGRAM

## SPECIFICATIONS

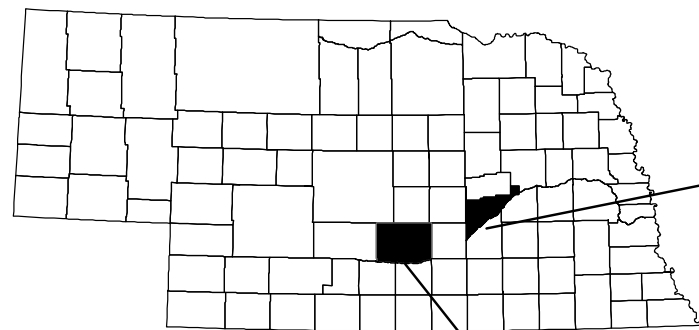
- CS-01 MOBILIZATION AND DEMOBILIZATION
- CS-04 IN-CHANNEL DISKING

# 2023 IN-CHANNEL DISKING HABITAT ENHANCEMENT PROJECT

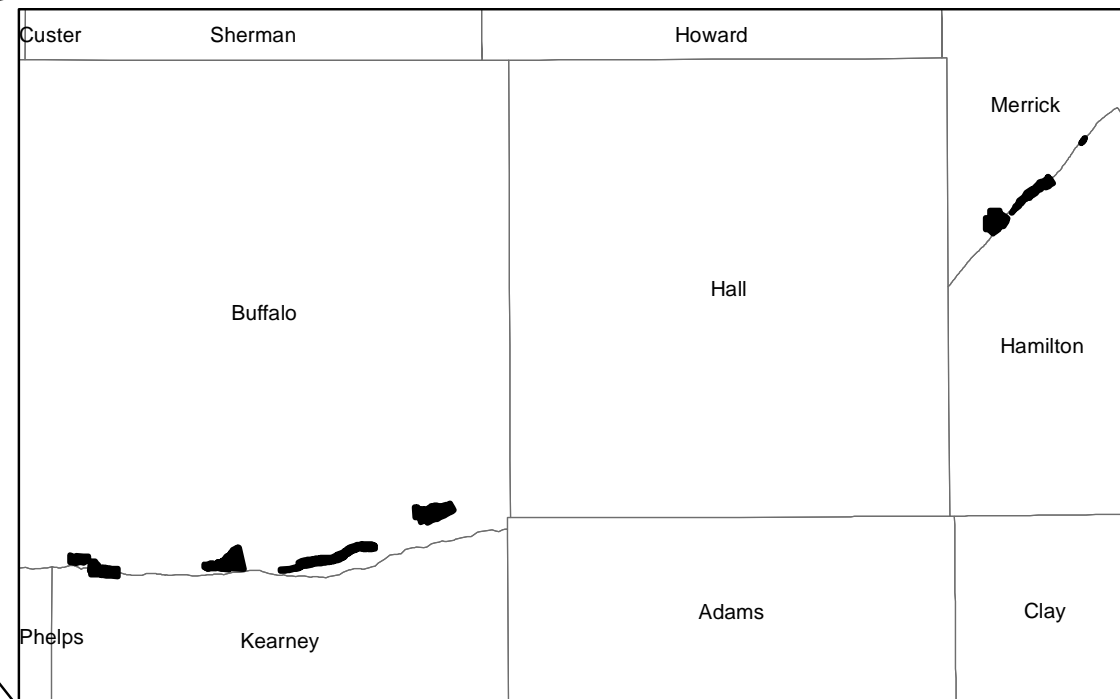
IN BUFFALO & MERRICK COUNTIES, NE

## INDEX

- 1 COVER SHEET
- 2 SITE LAYOUT
- 3 PAWNEE COMPLEX
- 4 FT KEARNY COMPLEX
- 5 GIBBON-SHELTON COMPLEX
- 6 CLARK ISLAND COMPLEX
- 7 CHAPMAN COMPLEX



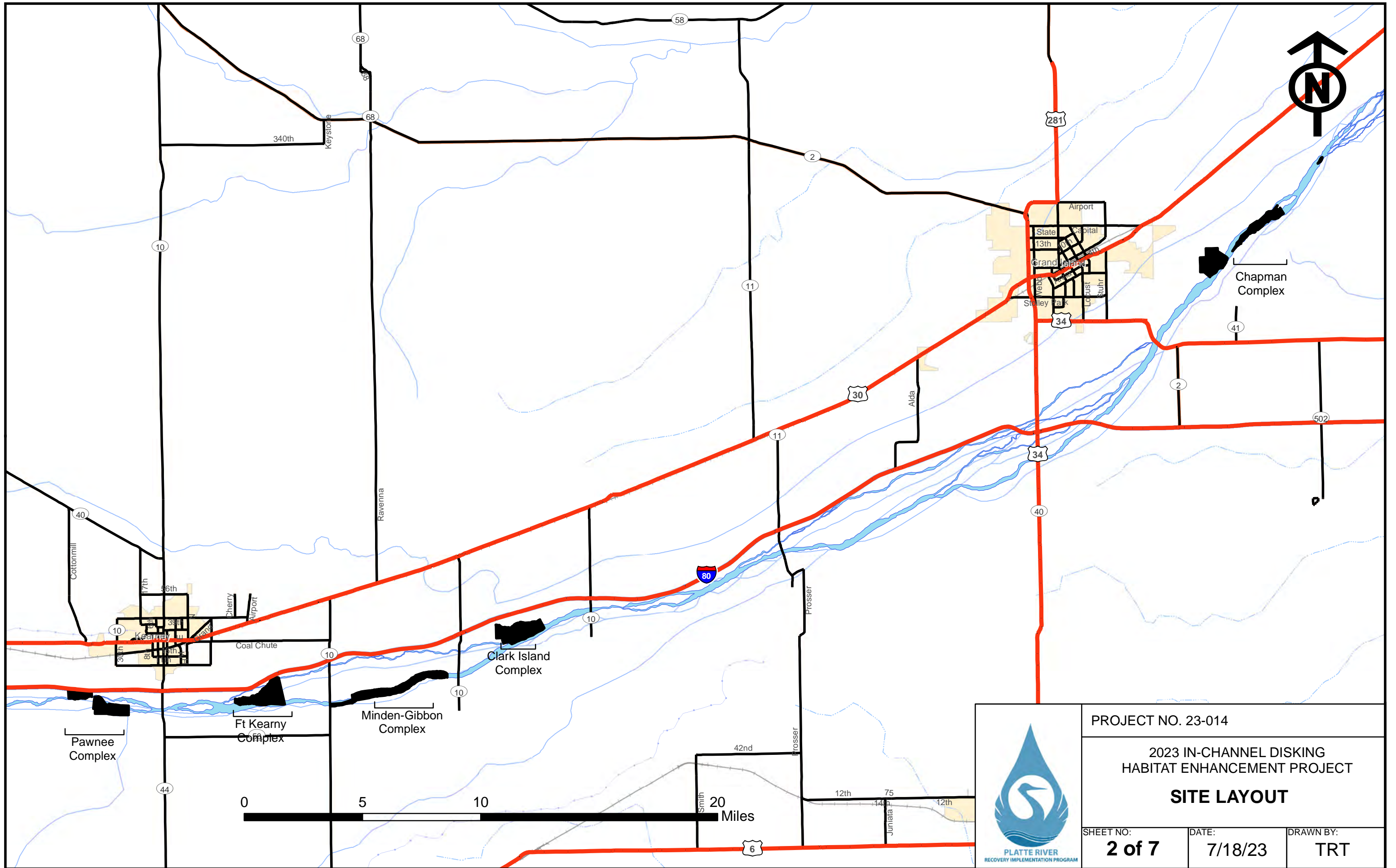
**PROJECT  
LOCATION**



**CAUTION**

The Platte River Recovery Implementation Program will not be responsible for, or liable for, unauthorized changes to, or uses of these plans. All changes to the plans must be in writing and must be approved by the Program.

 <small>PLATTE RIVER RECOVERY IMPLEMENTATION PROGRAM</small>	PROJECT NO. 23-014		
	2023 IN-CHANNEL DISKING HABITAT ENHANCEMENT PROJECT  <b>COVER SHEET</b>		
	SHEET NO: <b>1 of 7</b>	DATE: <b>7/18/23</b>	DRAWN BY: <b>TRT</b>



PROJECT NO. 23-014

2023 IN-CHANNEL DISKING  
HABITAT ENHANCEMENT PROJECT

**SITE LAYOUT**

SHEET NO:  
**2 of 7**

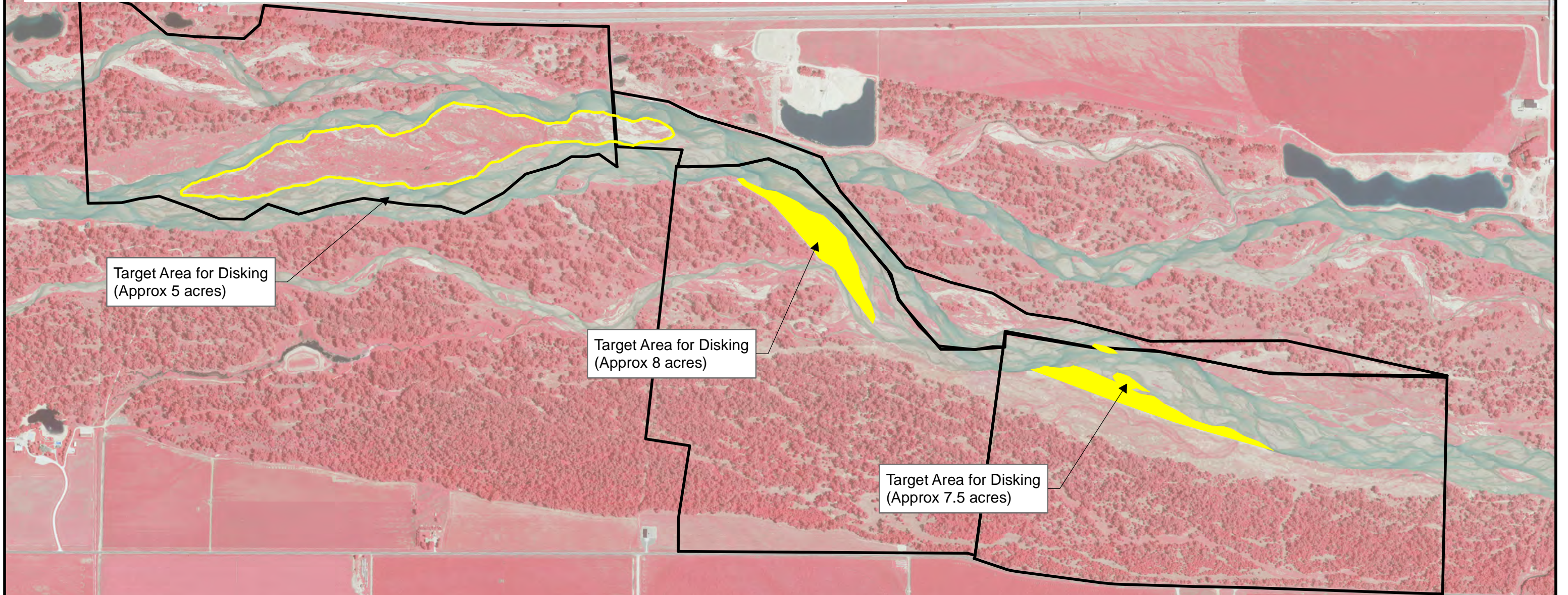
DATE:  
7/18/23

DRAWN BY:  
TRT



**NOTES:**

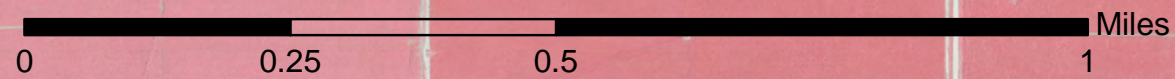
- 1) Project Engineer will review limits of cross-disking with contractor in the field prior to commencement of work.
- 2) Target areas are highlighted in yellow. Areas of dense vegetation (>18 inches) shall be disked twice. The second disking pass shall be perpendicular to the first if possible.



Target Area for Disking  
(Approx 5 acres)

Target Area for Disking  
(Approx 8 acres)

Target Area for Disking  
(Approx 7.5 acres)



PROJECT NO. 23-014		
2023 PAWNEE COMPLEX HABITAT ENHANCEMENT PROJECT		
<b>IN-CHANNEL DISKING</b>		
SHEET NO: <b>3 of 7</b>	DATE: 7/18/23	DRAWN BY: TRT

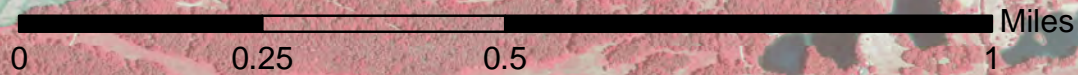


**NOTES:**

- 1) Project Engineer will review limits of cross-disking with contractor in the field prior to commencement of work.
- 2) Target areas are highlighted in yellow. Areas of dense vegetation (>18 inches) shall be disked twice. The second disking pass shall be perpendicular to the first if possible.



Target Area for Disking  
(Approx 6 acres)



PROJECT NO. 23-014		
2023 FT KEARNY COMPLEX HABITAT ENHANCEMENT PROJECT		
<b>IN-CHANNEL DISKING</b>		
SHEET NO: <b>4 of 7</b>	DATE: 7/18/23	DRAWN BY: TRT

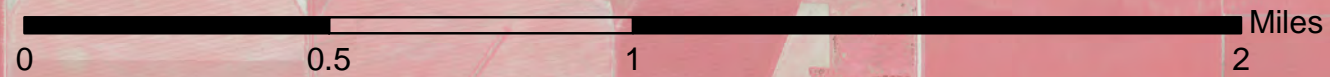


**NOTES:**

- 1) Project Engineer will review limits of cross-disking with contractor in the field prior to commencement of work.
- 2) Target areas are highlighted in green. Areas of dense vegetation (>18 inches) shall be disked twice. The second diskings pass shall be perpendicular to the first if possible.



Target Area for Disking  
(Approx 300 acres)



PROJECT NO. 23-014

2023 MINDEN-GIBBON COMPLEX  
HABITAT ENHANCEMENT PROJECT

**IN-CHANNEL DISKING**

SHEET NO:  
**5 of 7**

DATE:  
07/14/23

DRAWN BY:  
TRT

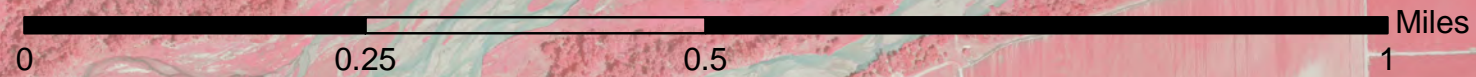


**NOTES:**

- 1) Project Engineer will review limits of cross-disking with contractor in the field prior to commencement of work.
- 2) Target areas are highlighted in yellow. Areas of dense vegetation (>18 inches) shall be disked twice. The second diskings pass shall be perpendicular to the first if possible.



Target Area for Disking  
(Approx 20 acres)



PROJECT NO. 23-014		
2023 CLARK ISLAND COMPLEX HABITAT ENHANCEMENT PROJECT		
<b>IN-CHANNEL DISKING</b>		
SHEET NO: <b>6 of 7</b>	DATE: 7/14/23	DRAWN BY: TRT



**NOTES:**

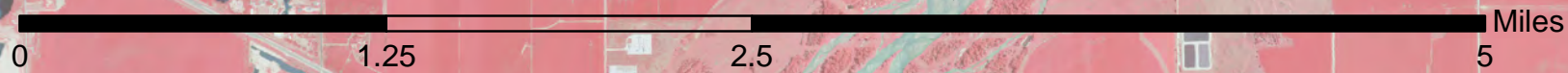
- 1) Project Engineer will review limits of cross-disking with contractor in the field prior to commencement of work.
- 2) Target areas are highlighted in green. Areas of dense vegetation (>18 inches) shall be disked twice. The second diskings pass shall be perpendicular to the first if possible.

Target Area for Disking  
(Approx 4 acres)



Target Area for Disking  
(Approx 22 acres)

Target Area for Disking  
(Approx 16 acres)



PROJECT NO. 23-014		
2023 CHAPMAN COMPLEX HABITAT ENHANCEMENT PROJECT		
<b>IN-CHANNEL DISKING</b>		
SHEET NO: <b>7 of 7</b>	DATE: 7/14/23	DRAWN BY: TRT